

NM OIL AND GAS COMMISSION  
Drawer DD  
UNITED STATES  
Artesia, NM 88210  
DEPARTMENT OF THE INTERIORSUBMIT IN TRIPLICATE\*  
(Other instructions on  
reverse side)Form approved.  
Budget Bureau No. 42-R1425.

## GEOLOGICAL SURVEY

## APPLICATION FOR PERMIT TO DRILL, DEEPEN, OR PLUG BACK

## 1a. TYPE OF WORK

DRILL ☒DEEPEN ☐

RECEIVED

PLUG BACK ☐

## b. TYPE OF WELL

OIL

☐

WELL

GAS

☒

WELL

OTHER

SINGLE

ZONE

MULTIPLE

ZONE

## 2. NAME OF OPERATOR

Yates Petroleum Corporation

## 3. ADDRESS OF OPERATOR

207 S. 4th, Artesia, New Mexico

O. C. D.  
ARTESIA, OFFICE

## 4. LOCATION OF WELL (Report location clearly and in accordance with any State requirements.)\*

At surface

1980' FNL and 660' FWL

At proposed prod. zone

same

## 14. DISTANCE IN MILES AND DIRECTION FROM NEAREST TOWN OR POST OFFICE\*

Approximately 22 miles NNE of Roswell, New Mexico.

## 15. DISTANCE FROM PROPOSED\*

LOCATION TO NEAREST

PROPERTY OR LEASE LINE, FT.

(Also to nearest drlg. unit line, if any)

660'

## 18. DISTANCE FROM PROPOSED LOCATION\*

TO NEAREST WELL, DRILLING, COMPLETED,  
OR APPLIED FOR, ON THIS LEASE, FT.

## 16. NO. OF ACRES IN LEASE

240

## 19. PROPOSED DEPTH

4224'

17. NO. OF ACRES ASSIGNED  
TO THIS WELL

160

## 20. ROTARY OR CABLE TOOLS

Rotary

## 21. ELEVATIONS (Show whether DF, RT, GR, etc.)

3602.7' GL

## 22. APPROX. DATE WORK WILL START\*

ASAP

## 23. PROPOSED CASING AND CEMENTING PROGRAM

SIZE OF HOLE	SIZE OF CASING	WEIGHT PER FOOT	SETTING	QUANTITY OF CEMENT
14 3/4"	10 3/4"	40.5#	850' or	500 sx circulated
7 7/8"	4 1/2"	10.5#	850' 720' TD	350 sx

We propose to drill and test the Abo and intermediate formations. Approximately 850' of surface casing will be set and cement circulated to shut off gravel and caving. If needed (lost circulation) 8 5/8" intermediate casing will be run to 1500' and cemented with enough cement calculated to tie back into the surface casing. If commercial, production casing will be run and cemented with adequate cover, perforated, and stimulated for production.

MUD PROGRAM: FW gel/LCM to 850'; Brine to 3200', Brine/KCL water to TD.

BOP PROGRAM: BOP's will be installed at the offset and tested daily.

GAS NOT DEDICATED.

IN ABOVE SPACE DESCRIBE PROPOSED PROGRAM: If proposal is to deepen or plug back, give data on present productive zone and proposed new productive zone. If proposal is to drill or deepen directionally, give pertinent data on subsurface locations and measured and true vertical depths. Give blowout preventer program, if any.

24.

SIGNED

*Kew Beardsley*

TITLE Regulatory Coordinator

DATE 9/23/82

(This space for Federal or State official use)

PERMIT NO.

(Orig. Sgd.) GEORGE H. STEWART

APPROVAL DATE

APPROVED BY

OCT 20 1982

TITLE

DATE

CONDITIONS OF APPROVAL, IF ANY:

JAMES A. GILLHAM  
DISTRICT SUPERVISORRECEIVED  
SEP 24 1982OIL & GAS  
U.S. GEOLOGICAL SURVEY  
ROSWELL, NEW MEXICO

MEXICO OIL CONSERVATION COMMISSION  
WELL LOCATION AND ACREAGE DEDICATION PLAT

Form C-102  
Supersedes C-128  
Effective 1-1-65

All distances must be from the outer boundaries of the Section.

Operator <b>YATES PETROLEUM CORPORATION</b>			Lease <b>Leede "UG" Federal</b>		Well No. <b>1</b>
Unit Letter <b>E</b>	Section <b>11</b>	Township <b>8 South</b>	Range <b>25 East</b>	County <b>Chaves</b>	

Actual Footage Location of Well:

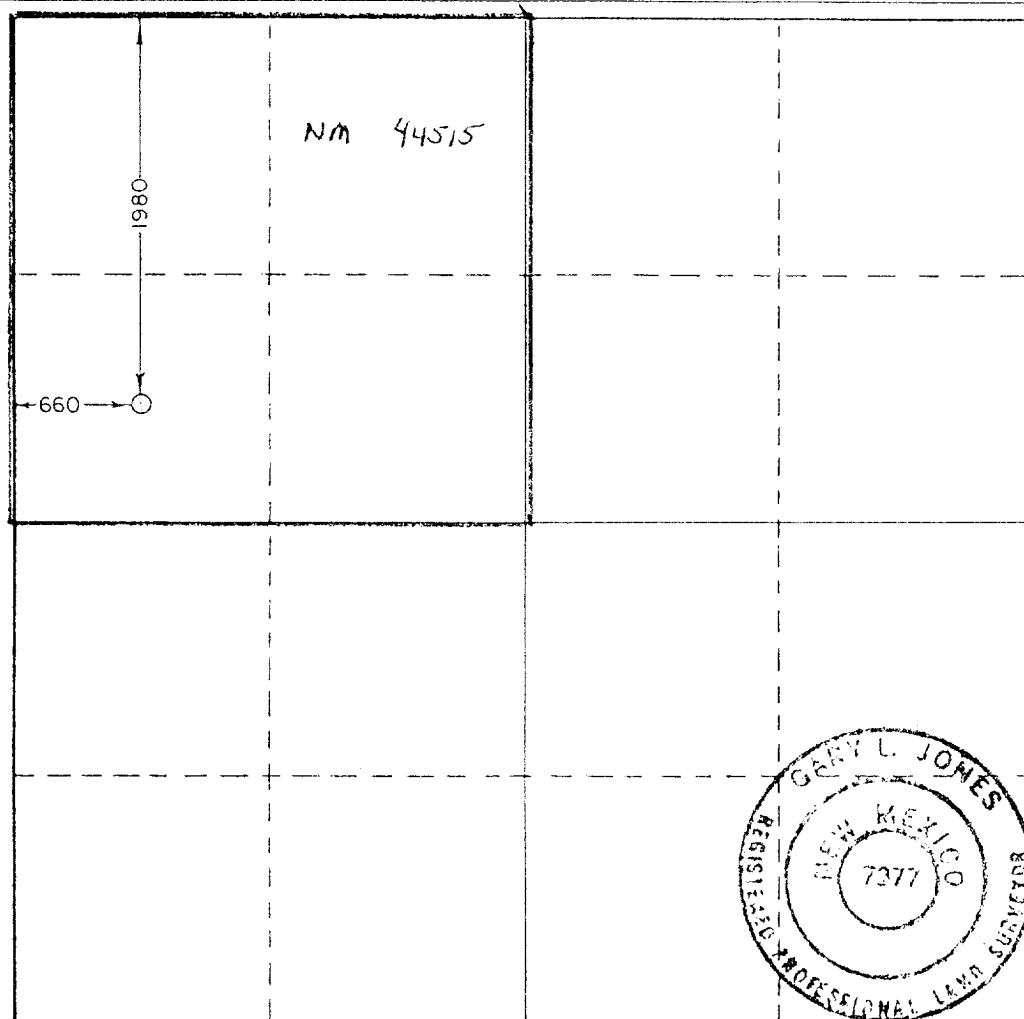
<b>1980</b> feet from the <b>North</b> line and <b>660</b> feet from the <b>West</b> line	Ground Level Elev. <b>3602.7'</b>	Producing Formation <b>Abn</b>	Pool <b>Under Pecos Slope Abn</b>	Dedicated Acreage: <b>1.60</b> Acres
---	--------------------------------------	-----------------------------------	--------------------------------------	---

1. Outline the acreage dedicated to the subject well by colored pencil or hachure marks on the plat below.
2. If more than one lease is dedicated to the well, outline each and identify the ownership thereof (both as to working interest and royalty).
3. If more than one lease of different ownership is dedicated to the well, have the interests of all owners been consolidated by communitization, unitization, force-pooling, etc?

☐ Yes ☐ No If answer is "yes," type of consolidation \_\_\_\_\_

If answer is "no," list the owners and tract descriptions which have actually been consolidated. (Use reverse side of this form if necessary.) \_\_\_\_\_

No allowable will be assigned to the well until all interests have been consolidated (by communitization, unitization, forced-pooling, or otherwise) or until a non-standard unit, eliminating such interests, has been approved by the Commission.



CERTIFICATION

I hereby certify that the information contained herein is true and complete to the best of my knowledge and belief.

*Ken Beardemphl*

Name

**Ken Beardemphl**

Position

**Regulatory Coordinator**

Company

**Yates Petroleum Corp.**

Date

**9/23/82**

I hereby certify that the well location shown on this plat was plotted from field notes of actual surveys made by me or under my supervision, and that the same is true and correct to the best of my knowledge and belief.

Date Surveyed

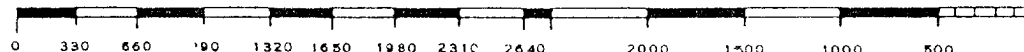
**September 16, 1982**

Registered Professional Engineer and/or Land Surveyor

*Gary L. Jones*

Certificate No.

**7977**



YATES PETROLEUM CORPORATION  
Leede "UG" Federal #1  
1980' FNL and 660' FWL  
Sec. 11-T8S-R25E

In conjunction with Form 9-331C, Application for Permit to Drill subject well, Yates Petroleum Corporation submits the following ten items of pertinent information in accordance with USGS requirements.

1. The geologic surface formation is quaternary alluvium.
2. The estimated tops of geologic markers are as follows:

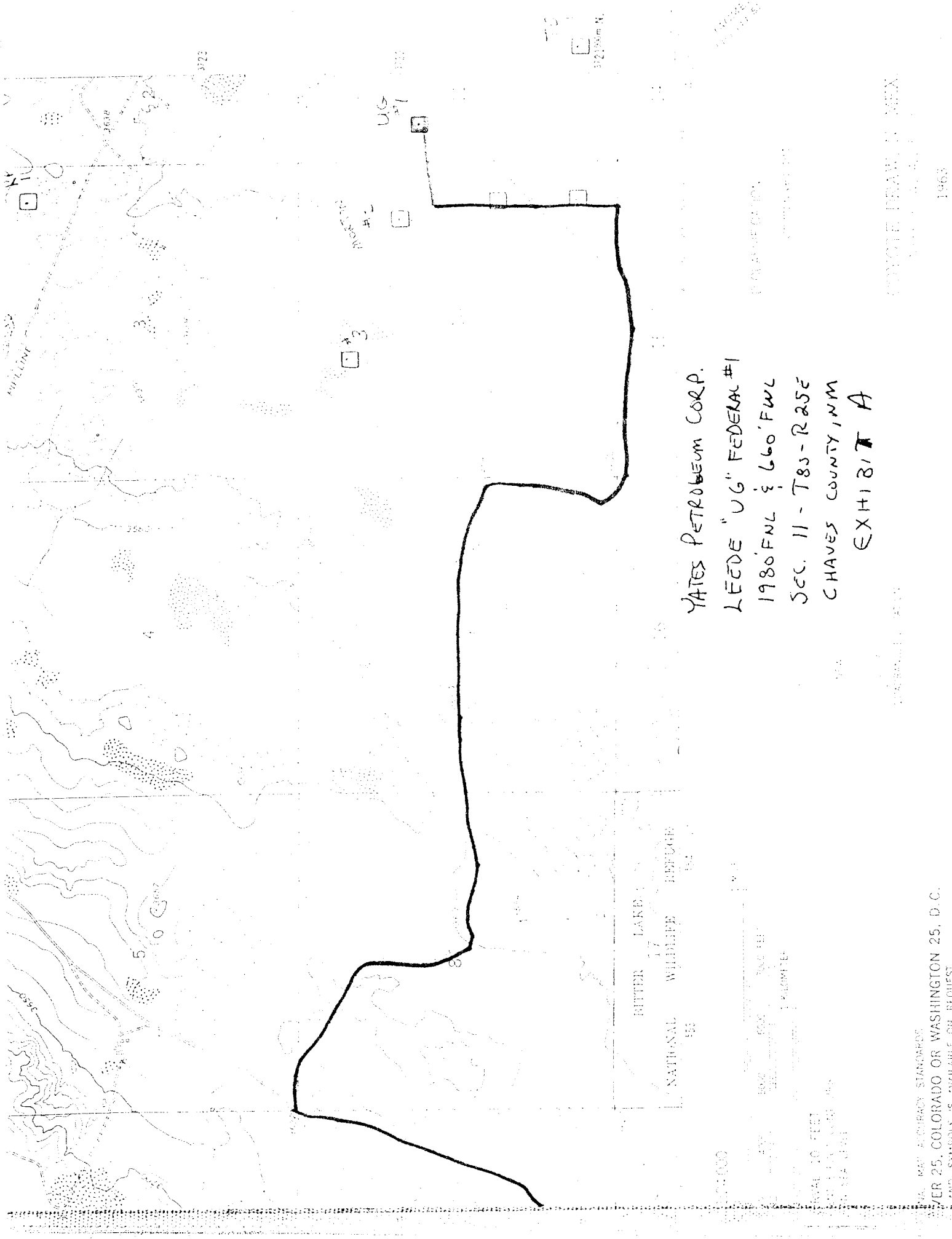
San Andres	387'
Glorieta	1503'
Fullerton	2935'
Abo	3628'
TD	4225'

3. The estimated depths at which anticipated water, oil or gas formations are expected to be encountered:

Water: approximately 225'

Oil or Gas: Abo 3670'

4. Proposed Casing Program: See Form 9-331C.
5. Pressure Control Equipment: See Form 9-331C and Exhibit B.
6. Mud Program: See Form 9-331C.
7. Auxiliary Equipment: Kelly Cock; pit level indicators and flow sensor equipment; sub with full-opening valve on floor, drill pipe connection.
8. Testing, Logging and Coring Program:  
Samples: Surface casing to TD.  
DST's: None  
Coring: None  
Logging: CNL-FDC TD to csg w/GR-CNL to surface & DLL from TD to csg  
w/selected min RxO
9. No abnormal pressures or temperatures are anticipated.
10. Anticipated starting date: As soon as possible after approval.

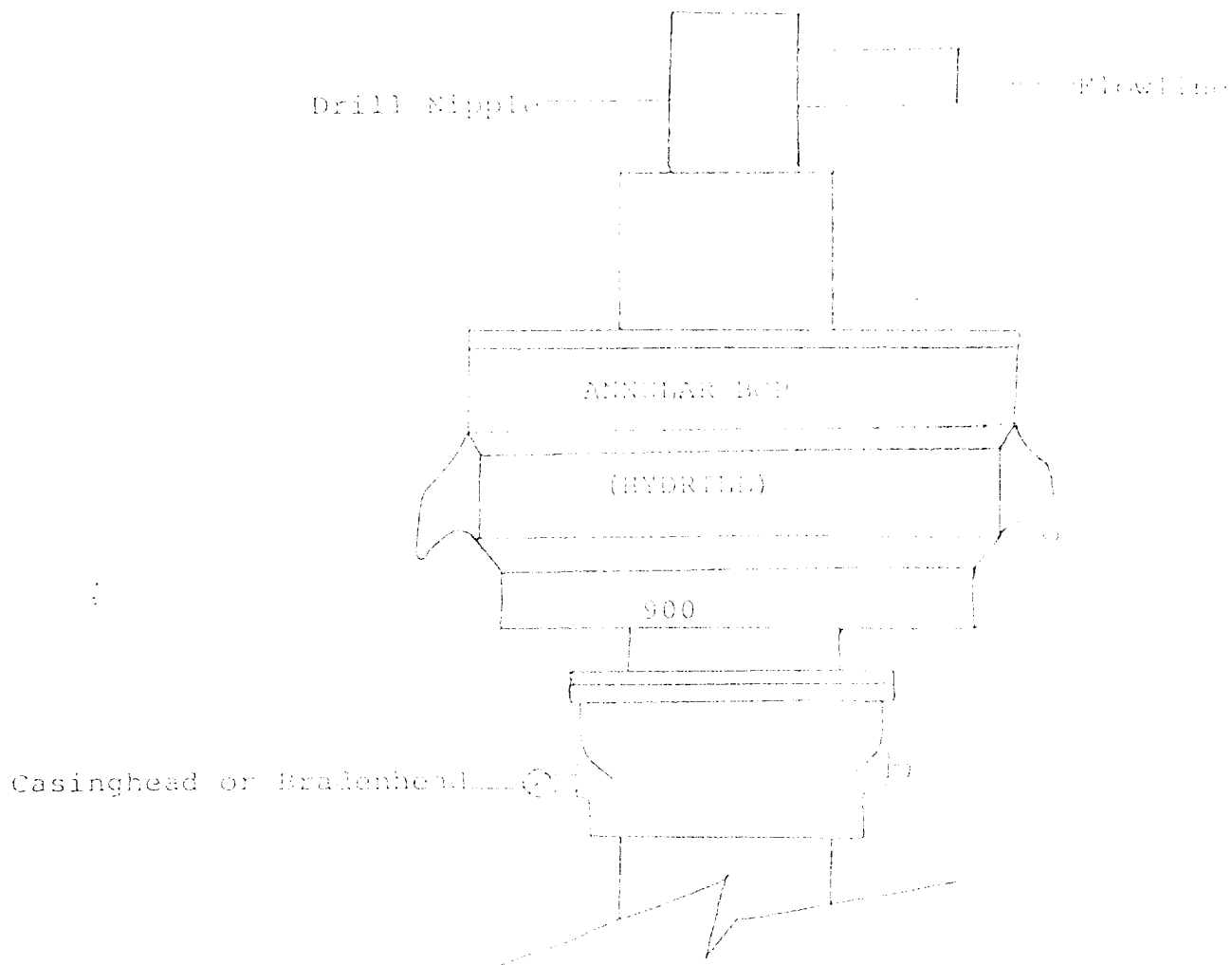


YATES PETROLEUM CORP.  
LEASE "UG" FEDERAL #1  
1980 FNL & 660' FNL  
SEC. 11 - T8S - R25E  
CHAVES COUNTY, NM  
EXHIBIT A

U.S. MAP ACQUISITION STANDARDS  
SER 25, COLORADO OR WASHINGTON 25, D.C.  
AND SYMBOLS IS AVAILABLE ON REQUEST

COYOTE DRAW, N. MEX.

1963



THE FOLLOWING CONSTITUTE MINIMUM BLOWOUT PREVENTER REQUIREMENTS

1. All preventers to be hydraulically operated with secondary manual controls installed prior to drilling out from under casing.
2. All connections from operating manifolds to preventers to be all steel. Hole or tube a minimum of one inch in diameter.
3. The available closing pressure shall be at least 15% in excess of that required with sufficient volume to operate the BOP's.
4. All connections to and from preventer to have a pressure rating equivalent to that of the BOP's.
5. Hole must be kept filled on trips below intermediate casing.

L X 191011 C

# YATES PETROLEUM CORPORATION

Reserve Pit Bottom  
be at ground level  
-111.

