

NEW MEXICO OIL CONSERVATION COMMISSION
WELL LOCATION AND ACREAGE DEDICATION

Form C-122
Supersedes C-128
Effective 1-1-85

All distances must be from the outer boundaries of the Section

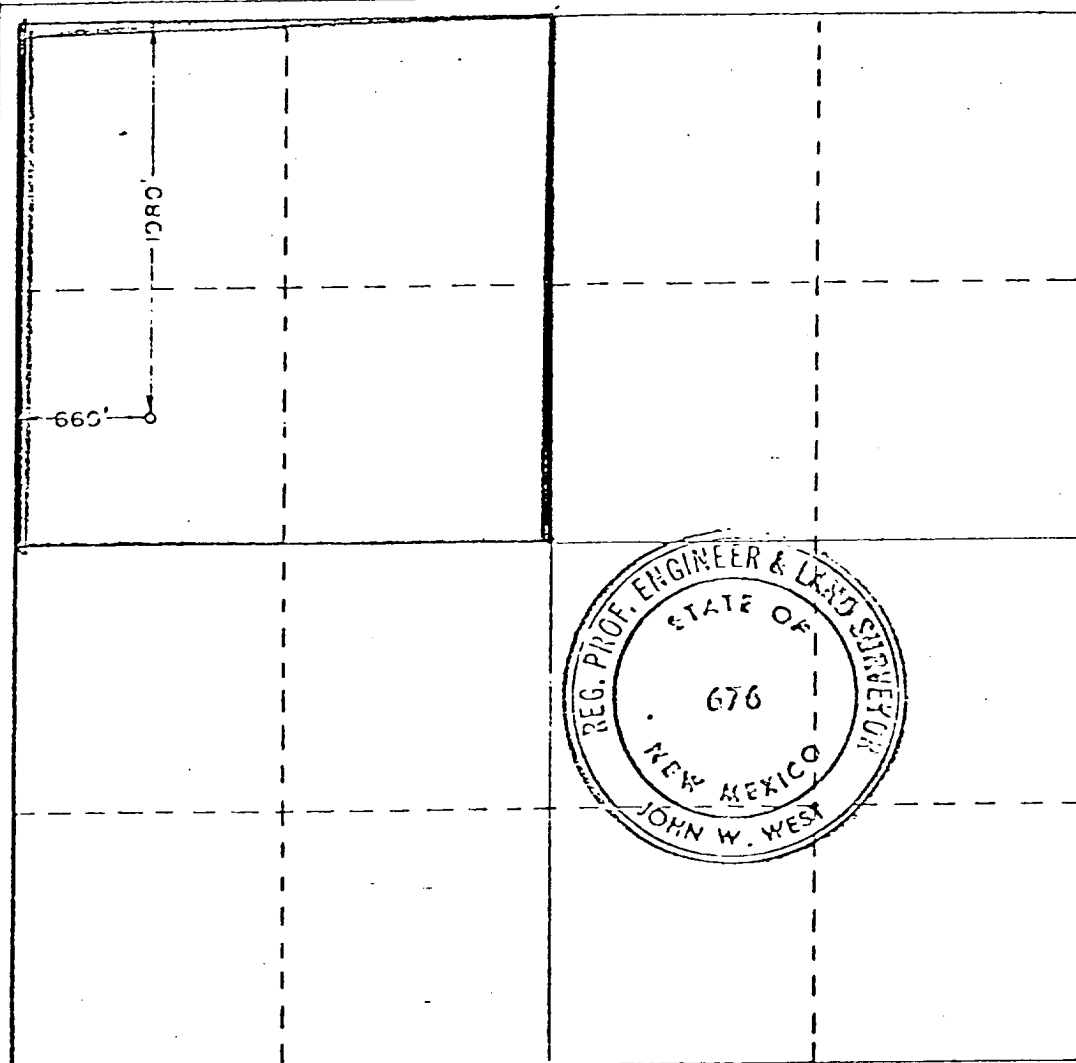
Petitioner SAMEDAN OIL CORPORATION			Lease STATE 16		Area 3
Tract Letter E	Section 16	Township 7 SOUTH	Range 26 EAST	County CHAVES	
Actual Footage Location of Well: 1980 feet from the NORTH line and 660 feet from the WEST line					
Ground Level Elev. 3591.9	Producing Formation Abo	Pool Pecos Area Hbo Leslie Spring		Indicated Acreage 160	

- Outline the acreage dedicated to the subject well by colored pencil or hachure marks on the plat below.
- If more than one lease is dedicated to the well, outline each and identify the ownership thereof (both as to working interest and royalty).
- If more than one lease of different ownership is dedicated to the well, have the interests of all owners been consolidated by communitization, unitization, force-pooling, etc?

☐ Yes ☐ No If answer is "yes," type of consolidation _____

If answer is "no," list the owners and tract descriptions which have actually been consolidated. (Use reverse side of this form if necessary.) _____

No allowable will be assigned to the well until all interests have been consolidated (by communitization, unitization, forced-pooling, or otherwise) or until a non-standard unit, eliminating such interests, has been approved by the Commission.



CERTIFICATION

I hereby certify that the information contained herein is true and complete to the best of my knowledge and belief.

Vertis Diamond

Name **Vertis Diamond**

Division **Clerk**

Position

Samedan Oil Corporation

Company

October 20, 1982

Date

I hereby certify that the well location shown on this plat was plotted from field notes of actual surveys made by me or under my supervision, and that the same is true and correct to the best of my knowledge and belief.

Date Surveyed

10/15/82

Registered Professional Engineer and/or Land Surveyor

John W. West

Certificate No. **JOHN W. WEST 876**
PATRICK A. ROMERO 8883
Ronald J. Eidson 3239