

UNITED STATES DEPARTMENT OF THE INTERIOR
GEOLOGICAL SURVEY

MINERAL COMMISSION
Artesian, NM 88210

NOV 1 1982
70-405-161814

APPLICATION FOR PERMIT TO DRILL, DEEPEN, OR PLUG BACK

1a. TYPE OF WORK
DRILL ☒ DEEPEN ☐ PLUG BACK ☐

b. TYPE OF WELL
OIL WELL ☐ GAS WELL ☒ OTHER ☐ MULTIPLE ZONE ☐

2. NAME OF OPERATOR
STEVENS OPERATING CORPORATION

3. ADDRESS OF OPERATOR
P. O. Box 2408, Roswell, NM 88201

4. LOCATION OF WELL (Report location clearly and in accordance with any State requirements.)
At surface 1980 FSL, 990 FEL, SEC 9, T7S, R26E
At proposed prod. zone same

14. DISTANCE IN MILES AND DIRECTION FROM NEAREST TOWN OR POST OFFICE*
25.5 airmiles northeast of Roswell, New Mexico

10. DISTANCE FROM PROPOSED* LOCATION TO NEAREST PROPERTY OR LEASE LINE, FT.
(Also to nearest drlg. unit line, if any) 990'
16. NO. OF ACRES IN LEASE 1160
18. DISTANCE FROM PROPOSED LOCATION* TO NEAREST WELL, DRILLING, COMPLETED, OR APPLIED FOR, ON THIS LEASE, FT. 10500'
19. PROPOSED DEPTH 4800'

21. ELEVATIONS (Show whether DF, RT, GR, etc.)
3657.2 GR

23. PROPOSED CASING AND CEMENTING PROGRAM

SIZE OF HOLE	SIZE OF CASING	WEIGHT PER FOOT	SETTING DEPTH
11"	8 5/8"	24.0#	900'
7 7/8"	4 1/2"	9.5#	4800'

QUANTITY OF CEMENT
Sufficient to circulate
Sufficient to circulate to surface

Well will be drilled to a depth sufficient to test the Abo formation. Abo porosity zones will be evaluated. If commercial production is indicated, well will be selectively perforated and stimulated.

Attached are:

1. Well Location and Acreage Dedication Plan
2. Supplemental Drilling Data
3. Surface Use Plan

Gas is not dedicated to a pipeline.

RECEIVED
OCT 26 1982

OIL & GAS
U.S. GEOLOGICAL SURVEY
ROSWELL, NEW MEXICO

IN ABOVE SPACE DESCRIBE PROPOSED PROGRAM: If proposal is to deepen or plug back, give data on present productive zone and proposed new productive zone. If proposal is to drill or deepen directionally, give pertinent data on subsurface locations and measured and true vertical depth. Give blowout preventer program, if any.

24. SIGNED Pat Thompson TITLE Production Coordinator DATE Oct. 25, 1982
(This space for Federal or State use)

PERMIT NO. _____ APPROVAL DATE _____

APPROVED BY GEORGE H. STEWART TITLE _____
CONDITIONS OF APPROVAL, IF ANY:

NEW MEXICO OIL CONSERVATION COMMISSION
WELL LOCATION AND ACREAGE DEDICATION PLAT

NOV 1 1982
Form C-102
Supersedes C-128
Effective 1-1-65

All distances must be from the outer boundaries of the Section

Q.C.D.

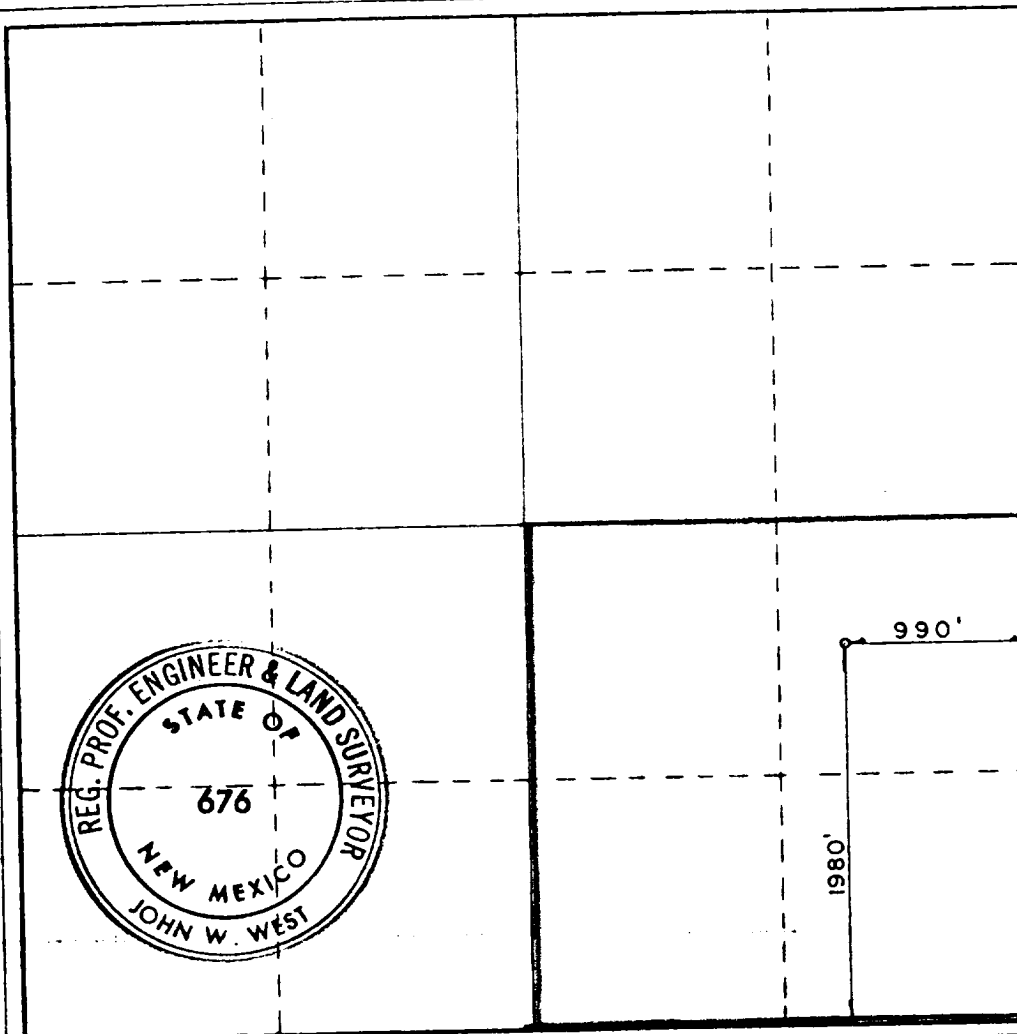
Operator STEVENS OPERATING CO.		Lease HELEN COLLINS FED.		ARTESIA. OFFICE	Well No. 2
Unit Letter I	Section 9	Township 7S	Range 26E	County CHAVES	
Actual Footage Location of Well: 1980 feet from the SOUTH line and 990 feet from the EAST line					
Ground Level Elev. 8657.2	Producing Formation Abo		Pool Pecos Slope Abo		Dedicated Acreage: 160 Acres

- Outline the acreage dedicated to the subject well by colored pencil or hachure marks on the plat below.
- If more than one lease is dedicated to the well, outline each and identify the ownership thereof (both as to working interest and royalty).
- If more than one lease of different ownership is dedicated to the well, have the interests of all owners been consolidated by communitization, unitization, force-pooling, etc?

☐ Yes ☐ No If answer is "yes," type of consolidation _____

If answer is "no," list the owners and tract descriptions which have actually been consolidated. (Use reverse side of this form if necessary.) _____

No allowable will be assigned to the well until all interests have been consolidated (by communitization, unitization, forced-pooling, or otherwise) or until a non-standard unit, eliminating such interests, has been approved by the Commission.



CERTIFICATION

I hereby certify that the information contained herein is true and complete to the best of my knowledge and belief.

Pat Thompson

Name

Pat Thompson

Position

Production Coordinator

Company

Stevens Operating Corp.

Date

October 25, 1982

I hereby certify that the well location shown on this plat was plotted from field notes of actual surveys made by me or under my supervision, and that the same is true and correct to the best of my knowledge and belief.

Date Surveyed

10/21/82

Registered Professional Engineer and/or Land Surveyor

John W. West

Certificate No.

0 320 640 960 1280 1600 1920 2240 2560 2880 3200 3520 3840 4160 4480 4800 5120 5440 5760 6080 6400

RECEIVED

NOV 1 1982

O. C. D.
ARTESIA, OFFICE

SUPPLEMENTAL DRILLING DATA

STEVENS OPERATING CORPORATION
WELL #2 HELEN-COLLINS FEDERAL
990' FEL & 1980' FSL, SEC. 9-T7S-R26E
CHAVES COUNTY, NEW MEXICO

1. SURFACE FORMATION: Alluvium

2. ESTIMATED TOPS OF GEOLOGIC MARKERS:

San Andres	650'	Abo	3970'
Glorietta	1850'		

3. ANTICIPATED POROSITY ZONES:

Water	150 - 200'
Oil	1200 - 1300'
Gas	3970 - 4700'

4. CASING DESIGN:

<u>Size</u>	<u>Interval</u>	<u>Weight</u>	<u>Grade</u>	<u>Joint</u>	<u>Condition</u>
8 5/8"	0 - 900'	24.0#	K-55	STC	New
4 1/2"	0 - 4800'	9.5#	K-55	STC	New

5. SURFACE CONTROL EQUIPMENT: A double ram-type preventer (600 series). A sketch of BOP stack is attached.

6. CIRCULATING MEDIUM:

0 - 900'	Fresh water mud with gel added if needed for viscosity.
900 - 4800'	Salt water mud, conditioned as necessary for control of viscosity and water loss.

7. AUXILIARY EQUIPMENT: Drill string safety valve.

8. TESTING, LOGGING AND CORING PROGRAMS: No coring or DST's are planned. Compensated Neutron-Formation Density w/Gamma Ray Log, 0-TD; Dual Laterolog, shoe to TD.

9. ABNORMAL PRESSURES, TEMPERATURES OR GASES: None anticipated.

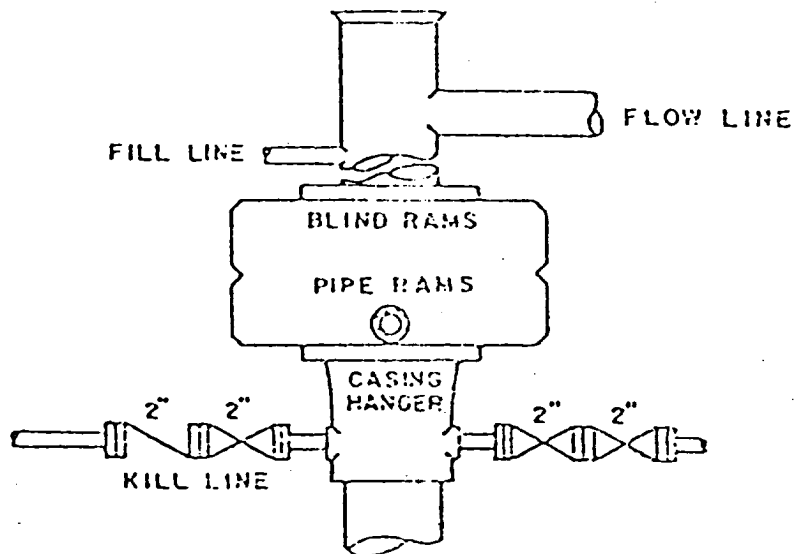
10. ANTICIPATED DATES: It is planned that operations will commence about November 1, 1982. Duration of drilling and completion operations should be 20 to 60 days.

RECEIVED

NOV 1 1982

O. C. D.
ARTESIA, OFFICE

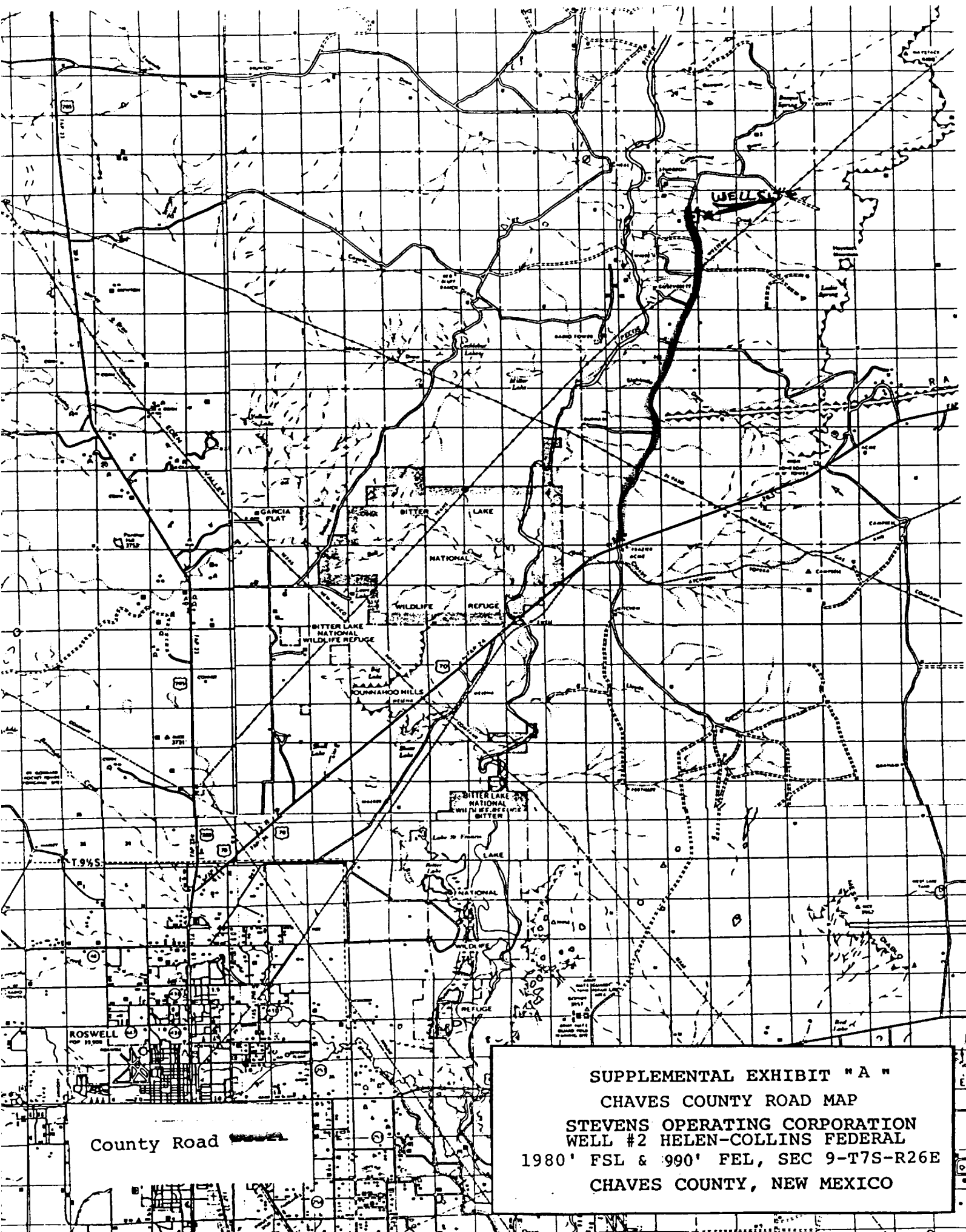
BLOWOUT PREVENTER SKETCH



DUAL RAM-TYPE PREVENTER

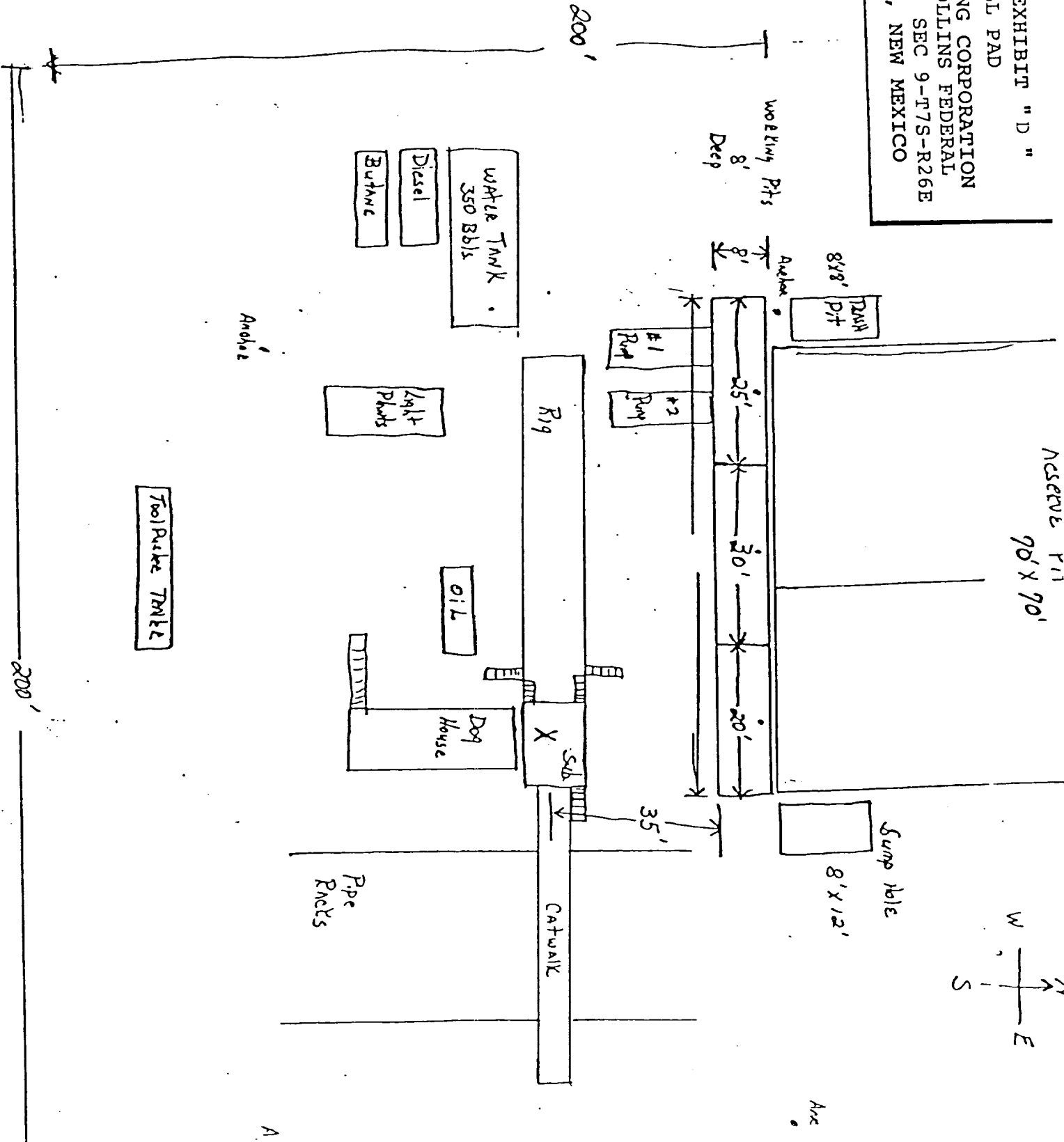
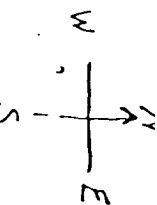
Blowout Preventer Sketch

Stevens Operating Corporation
Well #2 Helen-Collins Federal
990' FEL & 1980' FSL, Sec 9-T7S-R26E
Chaves County, New Mexico



SUPPLEMENTAL EXHIBIT "D"
 SKETCH OF WELL PAD
 STEVENS OPERATING CORPORATION
 WELL #2 HELEN-COLLINS FEDERAL
 .980' FSL & 990' FEL, SEC 9-T7S-R26E
 CHAVES COUNTY, NEW MEXICO

Reserve Pit
 70' x 70'



219. Co.
 Rig #1
 5' x 5' x 5' Cellar