

NM OIL CONS. COMMISSION
Drawer DD
STEVENS OPERATING CORPORATION
118 WEST FIRST STREET
P. O. BOX 2203
ROSWELL, NEW MEXICO 88201
505 /622-7273

November 29, 1983

RECEIVED
Nov 30 10 09 AM '83
BUR. OF LAND MGMT
ROSWELL DISTRICT

NM - 38342

U. S. Department of the Interior
P. O. Drawer 1397
Roswell, New Mexico 88201

To Whom It May Concern:

This letter is to request approval for the off-lease sale of natural gas to the Transwestern Pipeline Company.

We propose to lay a 2 7/8" flowline from the Helen Collins Federal #2 Well located 1980' from the south line, 990' from the east line in Section 9, Township 7 South, Range 26 East, located on lease NM 38342 on top of the ground to the Fred Pool-Wagner #1 Well located 660' from the south line, 1980' from the west line of Section 10, Township 7 South, Range 26 East. Transwestern's sales meter will be located on the Fred Pool-Wagner #1 location. A check meter will be installed on the Helen Collins #2 location.

Your early attention to this request will be greatly appreciated.

Yours very truly,

STEVENS OPERATING CORPORATION

John V. Walker
John V. Walker

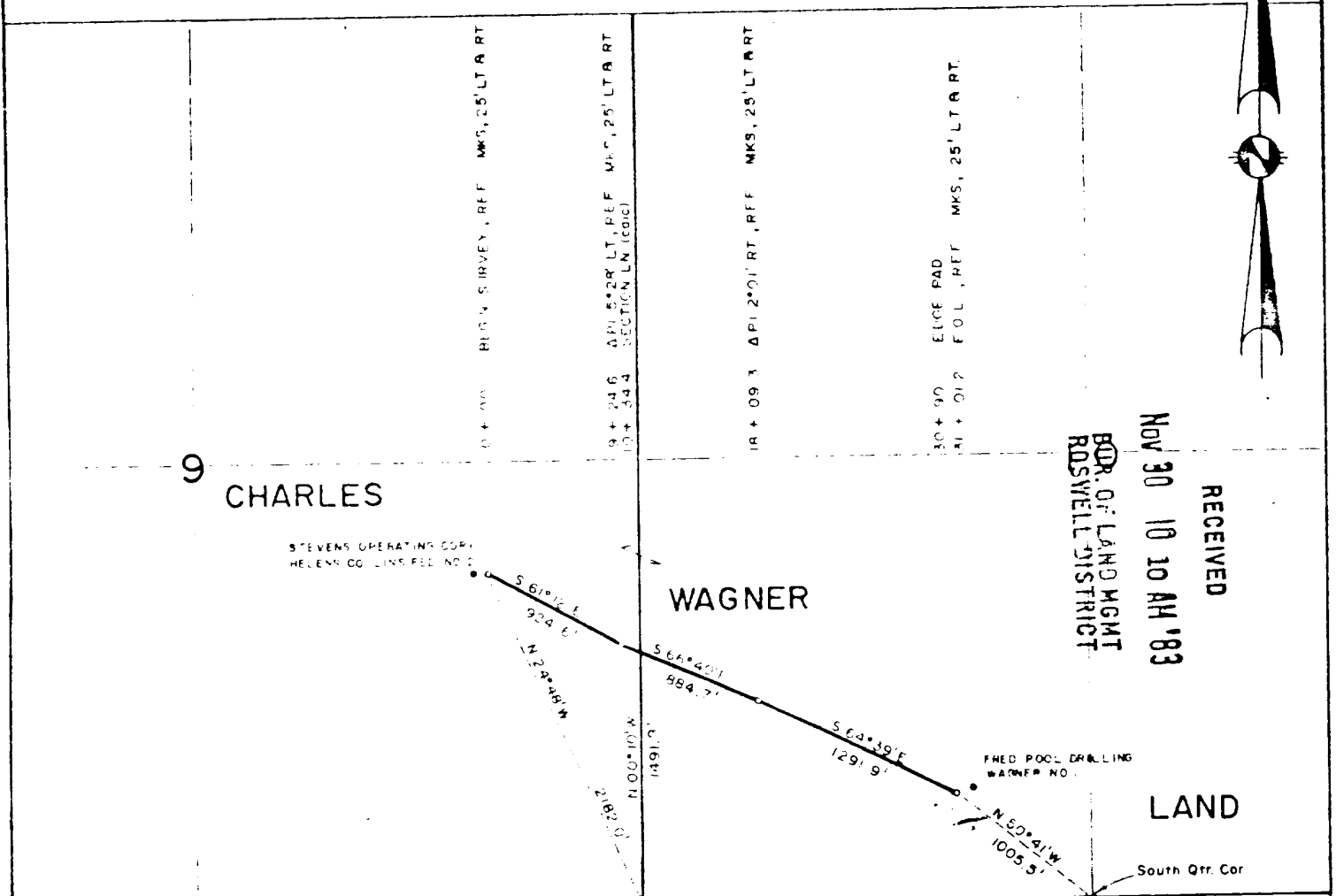
APPROVED

Peter W. Chester

JUN 21 1984

JVW/clw

SECTIONS 9 and 10, TOWNSHIP 7 SOUTH, RANGE 26 EAST, N. M. P. M.
CHAVES COUNTY, NEW MEXICO



LEGAL DESCRIPTION

A STRIP OF LAND 30.0 FEET WIDE, BEING 15.0 FEET LEFT AND 15.0 FEET RIGHT OF THE FOLLOWING DESCRIBED SURVEY OF CENTERLINE.

BEGINNING AT ENG. STA. 0+00, WHICH LIES N.24°48'W. 2182.0 FEET FROM THE SOUTHEAST CORNER OF SECTION 9, TOWNSHIP 7 SOUTH, RANGE 26 EAST, N.M.P.M., CHAVES COUNTY, NEW MEXICO; THENCE S.61°12'E. 924.6 FEET TO ENG. STA. 9+24.6; THENCE S.66°40'E. 884.7 FEET TO ENG. STA. 18+09.3; THENCE S.64°39'E. 1291.9 FEET TO ENG. STA. 31+01.2, WHICH LIES N.50°41'W. 1005.5 FEET FROM THE SOUTH QUARTER CORNER OF SECTION 10, TOWNSHIP 7 SOUTH, RANGE 26 EAST, N.M.P.M., CHAVES COUNTY, NEW MEXICO.

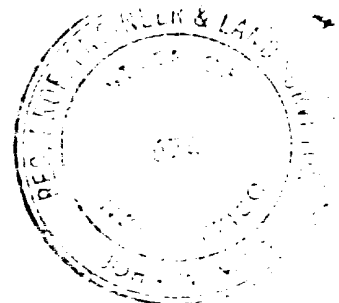
SAID STRIP OF LAND BEING 3101.2 FEET OR 187.95 RODS IN LENGTH,

RECEIVED BY

JUN 25 1984

O. C. D.

ARTESIA, OFFICE



I HEREBY CERTIFY THAT THIS PLAT WAS MADE FROM NOTES TAKEN IN THE FIELD IN A BONA FIDE SURVEY MADE UNDER MY SUPERVISION, AND THAT THE SAME IS TRUE AND CORRECT TO THE BEST OF MY KNOWLEDGE AND BELIEF.

JOHN W. WEST, N.M. P.E. & L.S. NO. 676
TEXAS R.P.S. NO. 1138

RONALD J. EIDSON, N.M. L.S. NO. 3239
TEXAS R.P.S. NO. 1883

STEVENS OIL COMPANY

A PROPOSED PIPELINE CROSSING CHARLES WAGNER LAND IN SECTIONS 9 AND 10, TOWNSHIP 7 SOUTH, RANGE 26 EAST, N.M.P.M., CHAVES COUNTY, NEW MEXICO.

JOHN W. WEST ENGINEERING COMPANY
CONSULTING ENGINEERS HOBBS, NEW MEXICO

Scale: 1"=1000'

Date: 11/10/83

Drawn by: Johnny H

Sheet 1 of 1 Sheets