

NEW MEXICO OIL CONSERVATION COMMISSION
WELL LOCATION AND ACREAGE DEDICATION PLAT

RECEIVED

Form C-102
Supersedes C-128
Effective 1-1-65

NOV 4 1982

All distances must be from the outer boundaries of the Section

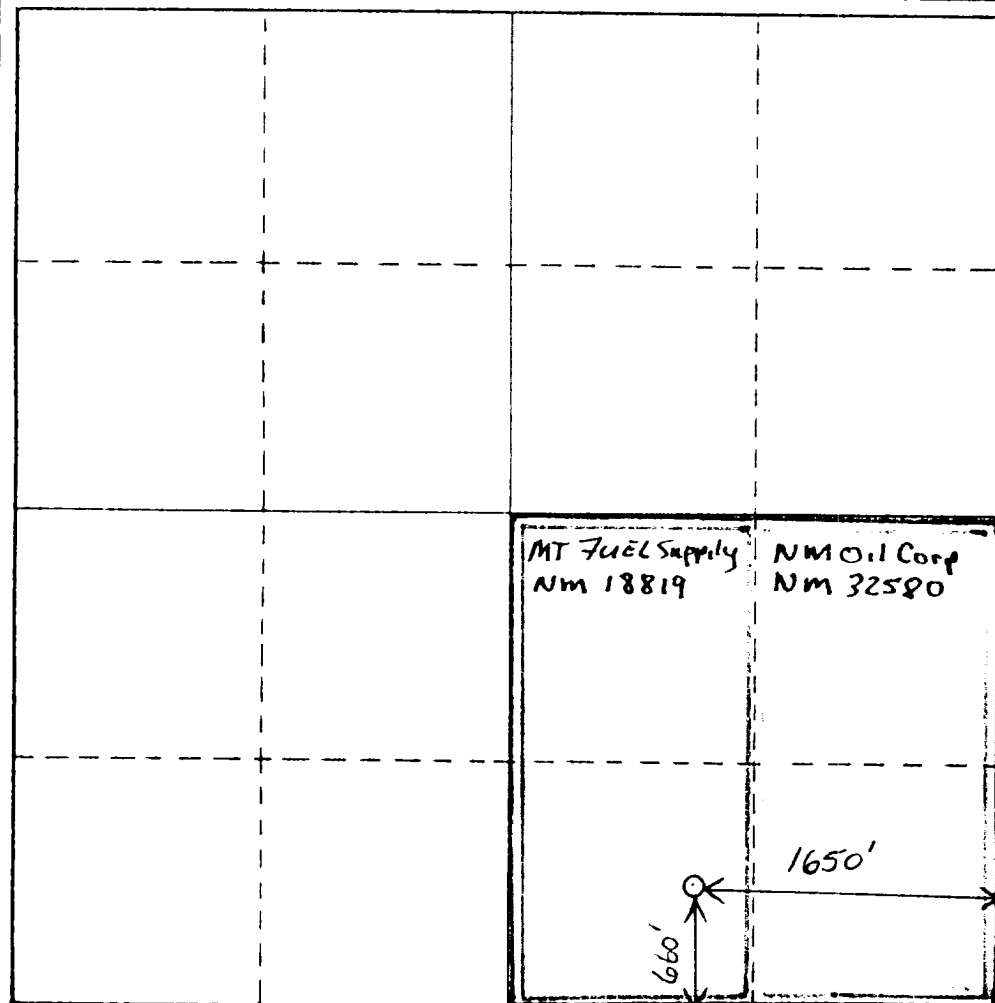
Operator YATES PETROLEUM CORPORATION			Lease Mountain "VR" Federal		
Unit Letter D	Section 8	Township 10 South	Range 25 East	County Chaves	
Actual Footage Location of Well: 660 feet from the South line and 1650 feet from the East line					
Ground Level Elev. 3518.6	Producing Formation ABO		Pool Pecos Slope ABO		Dedicated Acreage: 160 Acres

- Outline the acreage dedicated to the subject well by colored pencil or hachure marks on the plat below.
- If more than one lease is dedicated to the well, outline each and identify the ownership thereof (both as to working interest and royalty).
- If more than one lease of different ownership is dedicated to the well, have the interests of all owners been consolidated by communitization, unitization, force-pooling, etc?

☒ Yes ☐ No If answer is "yes," type of consolidation **TO BE Communitized**

If answer is "no," list the owners and tract descriptions which have actually been consolidated. (Use reverse side of this form if necessary.)

No allowable will be assigned to the well until all interests have been consolidated (by communitization, unitization, forced-pooling, or otherwise) or until a non-standard unit, eliminating such interests, has been approved by the Commission.



CERTIFICATION

I hereby certify that the information contained herein is true and complete to the best of my knowledge and belief.

Cy Cowan

Name
Cy Cowan
Position
Regulatory Coordinator
Company
Yates Petroleum Corp.
Date
10-28-82

I hereby certify that the well location shown on this plat was plotted from field notes of actual survey made by me or under my supervision and that the same is true and correct to the best of my knowledge and belief.

Date Surveyed
10-27-82
Registered Professional Engineer and/or Land Surveyor

Certificate No.

7977

