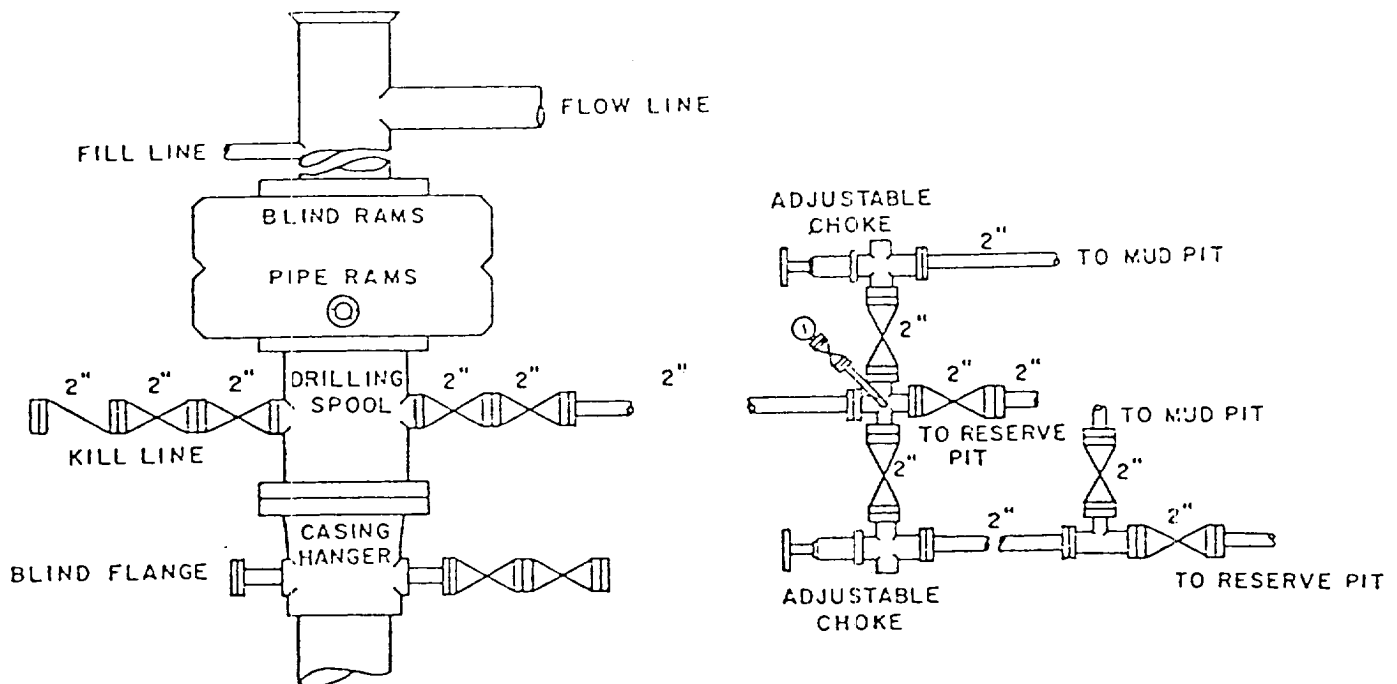


ISLER EXPLORATION, INC.  
No.1 Wolf Federal  
2080'FSL 330'FWL Sec.25-4S-25E  
Chaves County, N.M.

RECEIVED

NOV 3 1982

O. C. D.  
ARTESIA, OFFICE



BOP DIAGRAM

3000# WP Double-Ram  
Operated Daily