

NEW MEXICO OIL CONSERVATION COMMISSION
WELL LOCATION AND ACREAGE DEDICATION PLAT

RECEIVED

Form C-102
Supersedes C-128
Effective 1-1-65

NOV 3 1982

All distances must be from the outer boundaries of the Section.

Operator ISLER EXPLORATION, INC.		Lease WOLF FEDERAL		O. C. D.		Well No. #1
Unit Letter L	Section 25	Township 4-S	Range 25-E	County ARTESIA, OFFICE CHAVES		

Actual Postage Location of Well:

330 feet from the **WEST** line and **2080** feet from the **SOUTH** line

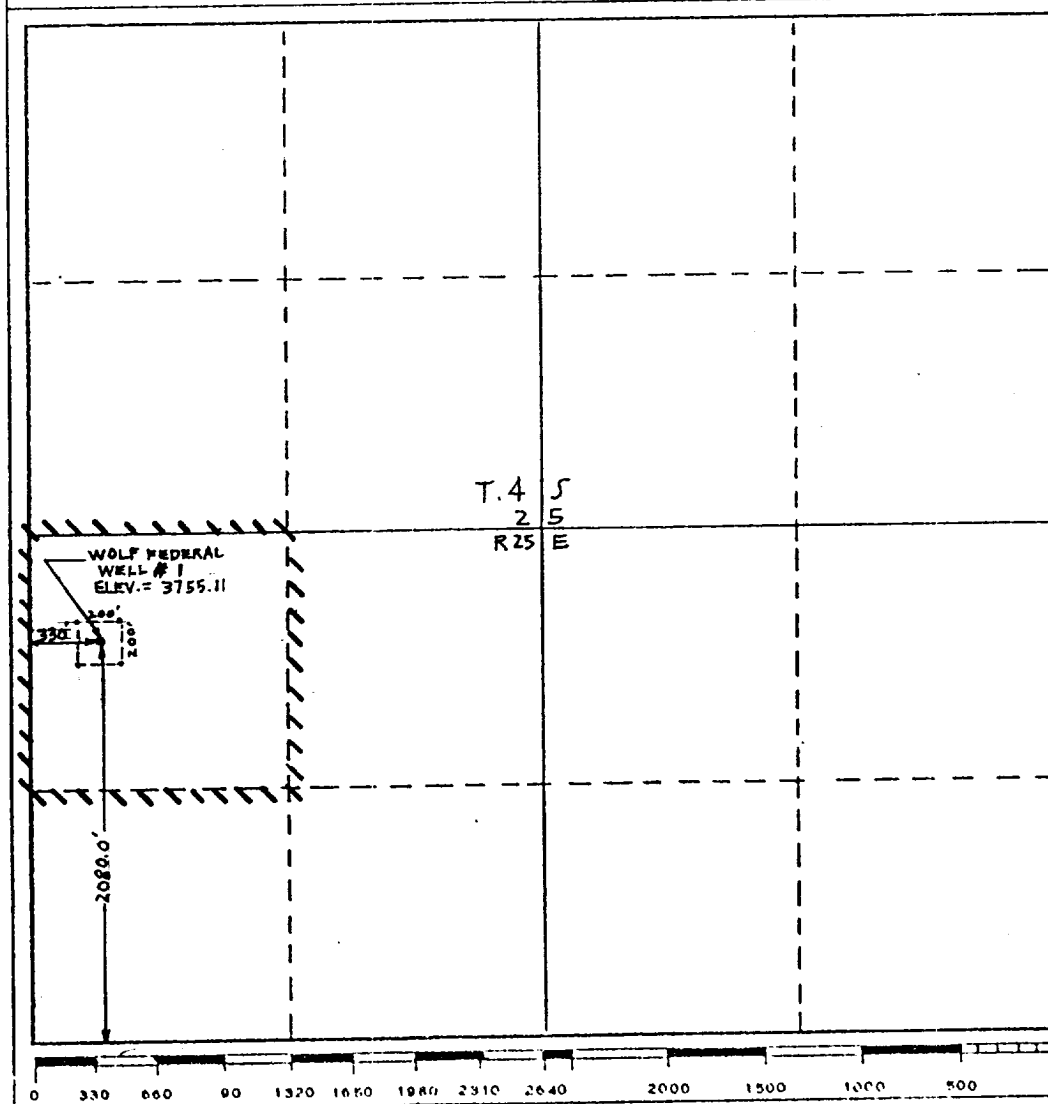
Ground Level Elev. 3755.11	Producing Formation San Andres	Pool Wildcat - San Andres	Dedicated Acreage: 40 Acres
--------------------------------------	--	-------------------------------------	---------------------------------------

1. Outline the acreage dedicated to the subject well by colored pencil or hatchure marks on the plat below.
2. If more than one lease is dedicated to the well, outline each and identify the ownership thereof (both as to working interest and royalty). SINGLE LEASE
3. If more than one lease of different ownership is dedicated to the well, have the interests of all owners been consolidated by communitization, unitization, force-pooling, etc?

☐ Yes ☐ No If answer is "yes," type of consolidation _____

If answer is "no," list the owners and tract descriptions which have actually been consolidated. (Use reverse side of this form if necessary.) _____

No allowable will be assigned to the well until all interests have been consolidated (by communitization, unitization, forced-pooling, or otherwise) or until a non-standard unit, eliminating such interests, has been approved by the Commission.



CERTIFICATION

I hereby certify that the information contained herein is true and complete to the best of my knowledge and belief.

Jerry W. Long
Name
JERRY W. LONG

Position
Agent

Company
ISLER EXPLORATION, INC.

Date
October 21, 1982

I hereby certify that the well location shown on this plat was plotted from field notes of actual surveys made by me or under my supervision, and that the same is true and correct to the best of my knowledge and belief.

October 16, 1982

Date Surveyed

Registered Professional Engineer and/or Land Surveyor

RICHARD B. WRIGHT

Certificate No.
7929