

UNITED STATES  
DEPARTMENT OF THE INTERIOR

## GEOLOGICAL SURVEY

## APPLICATION FOR PERMIT TO DRILL, DEEPEN, OR PLUG BACK

## 1a. TYPE OF WORK

DRILL ☒DEEPEN ☐PLUG BACK ☐

## b. TYPE OF WELL

OIL  
WELL ☐GAS  
WELL ☒OTHER ☐SINGLE  
ZONE ☒MULTIPLE  
ZONE ☐

## 2. NAME OF OPERATOR

Yates Petroleum Corporation

## 3. ADDRESS OF OPERATOR

207 S. 4th, Artesia, New Mexico

## 4. LOCATION OF WELL (Report location clearly and in accordance with any State requirements.)

At surface

660' FNL and 1980' FWL

At proposed prod. zone  
same

## 14. DISTANCE IN MILES AND DIRECTION FROM NEAREST TOWN OR POST OFFICE\*

Approximately 24 miles NNE of Roswell, NM

## 15. DISTANCE FROM PROPOSED\*

LOCATION TO NEAREST

PROPERTY OR LEASE LINE, FT.

(Also to nearest drlg. unit line, if any) 660'

## 16. NO. OF ACRES IN LEASE

800

17. NO. OF ACRES ASSIGNED  
TO THIS WELL

160

## 18. DISTANCE FROM PROPOSED LOCATION\*

TO NEAREST WELL, DRILLING, COMPLETED,  
OR APPLIED FOR, ON THIS LEASE, FT.

## 19. PROPOSED DEPTH

4250'

## 20. ROTARY OR CABLE TOOLS

Rotary

## 21. ELEVATIONS (Show whether DF, RT, GR, etc.)

3679.2' GL

## 22. APPROX. DATE WORK WILL START\*

ASAP

## 23.

## PROPOSED CASING AND CEMENTING PROGRAM

SIZE OF HOLE	SIZE OF CASING	WEIGHT PER FOOT	SETTING DEPTH	QUANTITY OF CEMENT
14 3/4"	10 3/4"	40.5# J-55	850'	725 sx circulated
7 7/8"	4 1/2"	9.5#	TD	350 sx circulated

We propose to drill and test the Abo and intermediate formations. Approximately 850' of surface casing will be set and cement circulated to shut off gravel and caving. If needed (lost circulation) 8 5/8" intermediate casing will be run to 1500' and cemented with enough cement calculated to tie back into the surface casing. If commercial, production casing will be run and cemented with adequate cover, perforated and stimulated as needed for production.

MUD PROGRAM: FW gel & LCM to 850', Brine to 3200', Brine & KCL to TD.

BOP PROGRAM: BOP's will be installed at the offset and tested daily.

GAS NOT DEDICATED.

IN ABOVE SPACE DESCRIBE PROPOSED PROGRAM: If proposal is to deepen or plug back, give data on present productive zone and proposed new productive zone. If proposal is to drill or deepen directionally, give pertinent data on subsurface locations and measured and true vertical depths. Give blowout preventer program, if any.

24.

SIGNED

TITLE Regulatory Coordinator DATE 10/28/82

(This space for Federal or State office use)

PERMIT NO.

(Orig. Sgd.) GEORGE H. STEWART

APPROVAL DATE

APPROVED BY

TITLE

DATE

CONDITIONS OF APPROVAL, IF ANY:

JAMES A. CULHAM  
DISTRICT SUPERVISOR

NEW MEXICO OIL CONSERVATION COMMISSION  
WELL LOCATION AND ACREAGE DEDICATION PLAT

RECEIVED

Form C-102  
Supersedes C-128  
Effective 1-1-65

All distances must be from the outer boundaries of the Section

Operator <b>YATES PETROLEUM CORPORATION</b>			Lease <b>Binnion "TT" Federal</b>			<b>NOV 9 1982</b>	
Unit Letter <b>C</b>	Section <b>24</b>	Township <b>7 South</b>	Range <b>25 East</b>	County <b>O. C. D.</b>			
Actual Footage Location of Well:							
<b>660</b> feet from the <b>North</b> line and <b>1980</b> feet from the <b>West</b> line		Producing Formation <b>Abo</b>		Pool <b>Pecos Slope Abo</b>		Dedicated Acreage: <b>160</b> Acres	
Ground Level Elev. <b>3679.2'</b>							

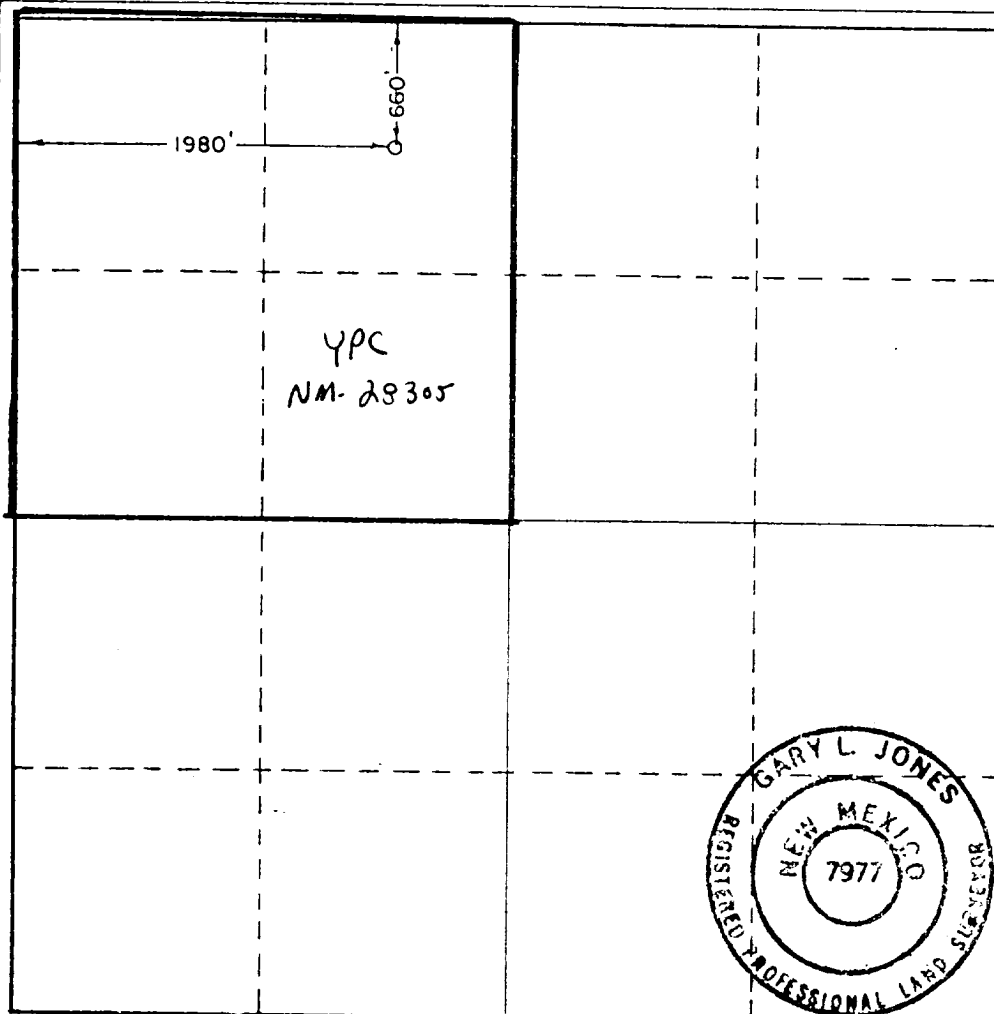
1. Outline the acreage dedicated to the subject well by colored pencil or hatchure marks on the plat below.
2. If more than one lease is dedicated to the well, outline each and identify the ownership thereof (both as to working interest and royalty).
3. If more than one lease of different ownership is dedicated to the well, have the interests of all owners been consolidated by communization, unitization, force-pooling, etc?

☐ Yes ☐ No If answer is "yes," type of consolidation \_\_\_\_\_

If answer is "no," list the owners and tract descriptions which have actually been consolidated. (Use reverse side of this form if necessary.) \_\_\_\_\_

No allowable will be assigned to the well until all interests have been consolidated (by communization, unitization, forced-pooling, or otherwise) or until a non-standard unit, eliminating such interests, has been approved by the Commission.

**RECEIVED**  
**OCT 29 1982**



**CERTIFICATION**

I hereby certify that the information contained herein is true and complete to the best of my knowledge and belief.

*Ken Beardemphl*

Name

**Ken Beardemphl**

Position

**Regulatory Coordinator**

Company

**Yates Petroleum Corp.**

Date

**10/28/82**

I hereby certify that the well location shown on this plat was plotted from field notes of actual surveys made by me or under my supervision, and that the same is true and correct to the best of my knowledge and belief.

Date Surveyed

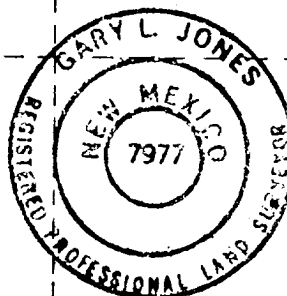
**October 22, 1982**

Registered Professional Engineer and/or Land Surveyor

*Gary L. Jones*

Certificate No.

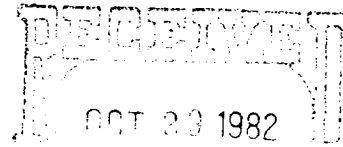
**7977**



0 330 660 990 1320 1650 1980 2310 2640 2970 3300 3630 3960 4290 4620 4950 5280 5610 5940 6270 6600

YATES PETROLEUM CORPORATION

Union "TT" Federal #5  
660' FNL and 1980' FWL  
Sec. 24-T7S-R25E



In conjunction with Form 9-331C, Application for Permit to Drill subject Well, Yates Petroleum Corporation submits the following ten items of pertinent information in accordance with USGS requirements.

U.S. GEOLOGICAL SURVEY  
 WASHINGTON, D.C. 20508

1. The geologic surface formation is sandy alluvium.
2. The estimated tops of geologic markers are as follows:

San Andres	438'
Glorieta	1536'
Fullerton	2973'
Abo	3639'
TD	4250'

3. The estimated depths at which anticipated water, oil or gas formations are expected to be encountered:

Water: approximately 150-180'

Oil or Gas: Abo 3650'

4. Proposed Casing Program: See Form 9-331C.
5. Pressure Control Equipment: See Form 9-331C and Exhibit B.
6. Mud Program: See Form 9-331C.
7. Auxiliary Equipment: Kelly Cock; pit level indicators and flow sensor equipment; sub with full-opening valve on floor, drill pipe connection.
8. Testing, Logging and Coring Program:
  - Samples: Surface casing to TD.
  - DST's: As warranted.
  - Coring: As warranted.
  - Logging: CNL-FDC TD to csg w/GR-CNL to surface & DLL from TD to csg.
9. No abnormal pressures or temperatures are anticipated.
10. Anticipated starting date: As soon as possible after approval.

RECEIVED

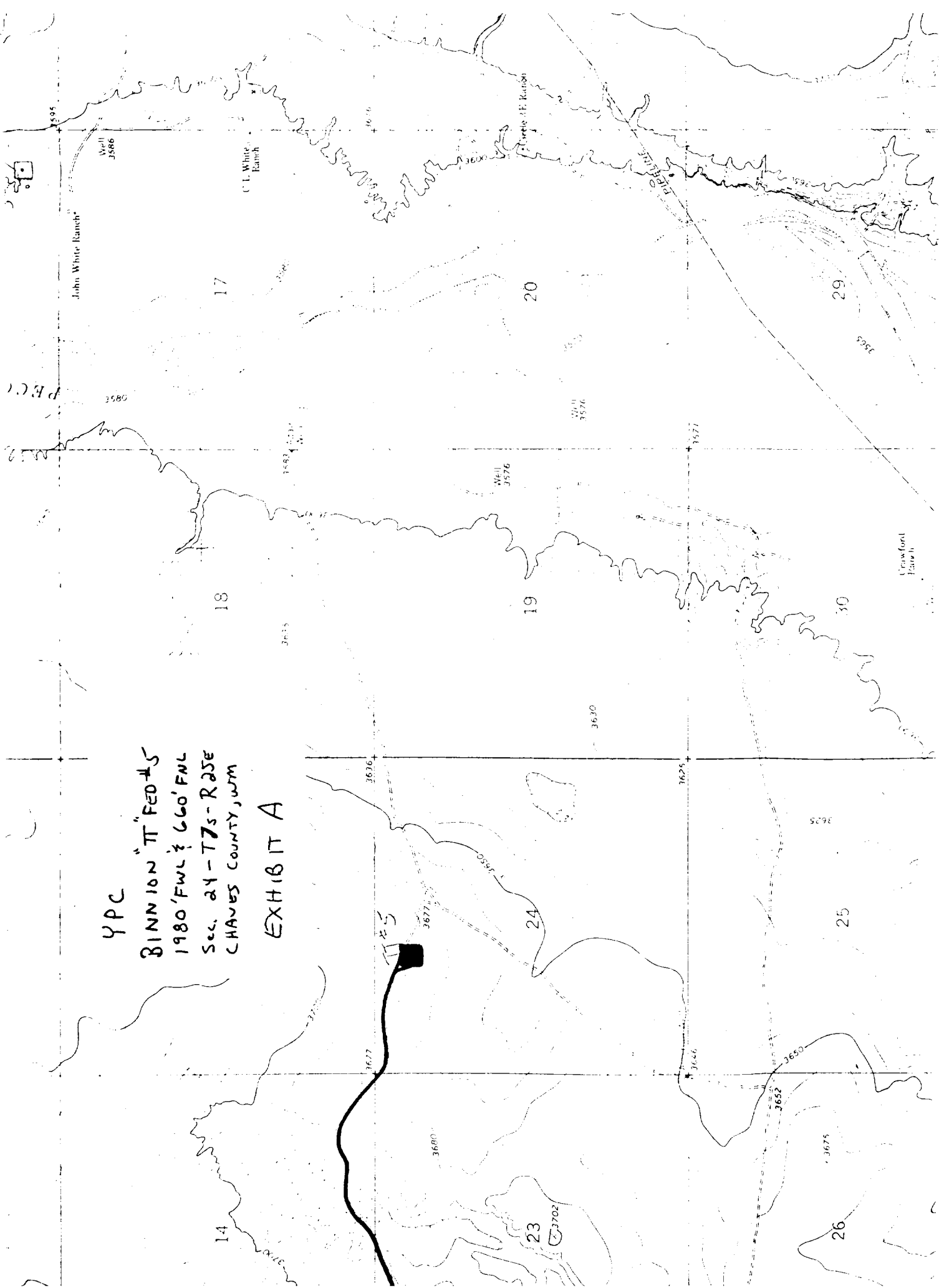
NOV 1982

O. C. D.  
 ARTESIA, CALIF.

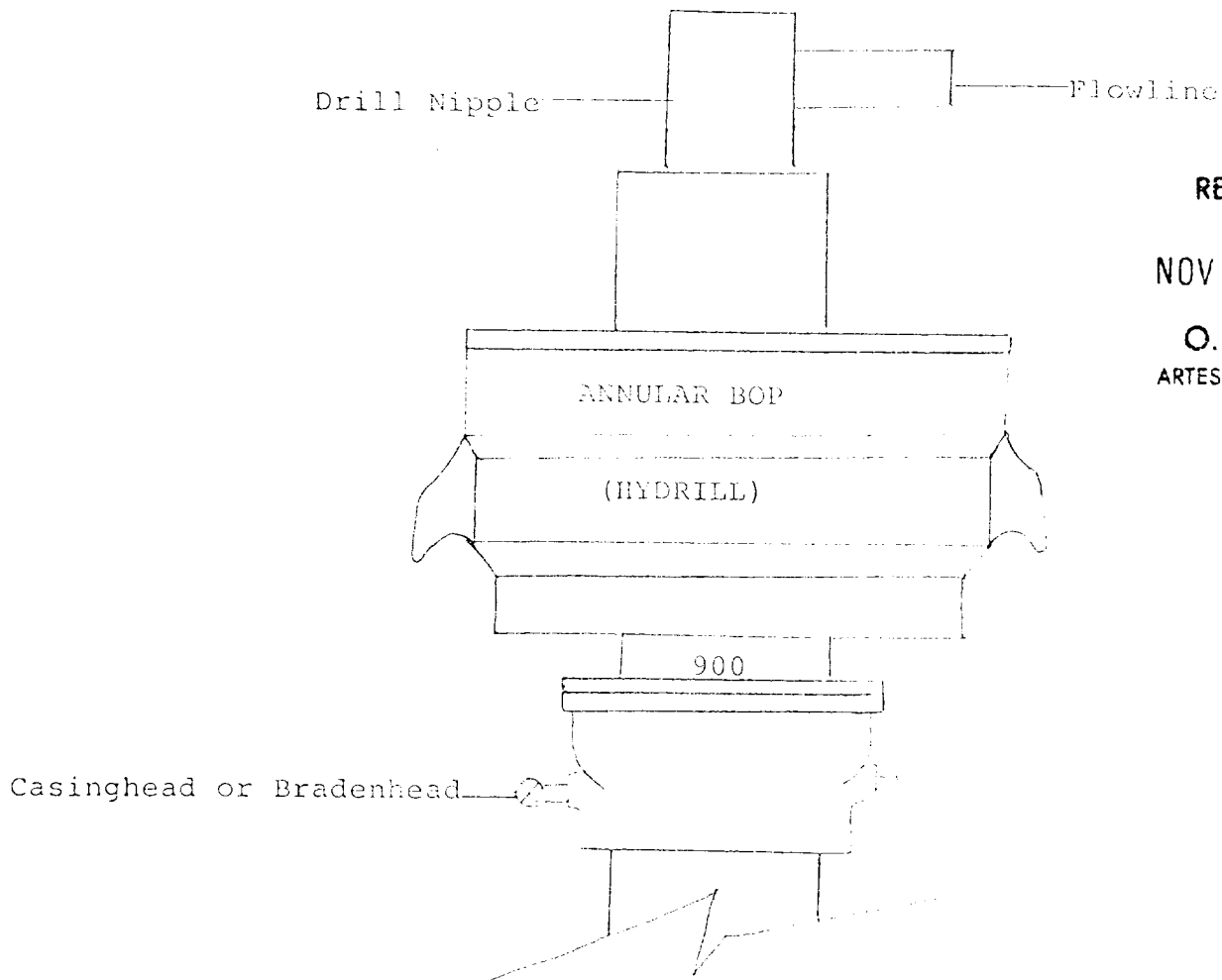
YPC

BINNION "T" FED #5  
1980' FWL & 660' FWL  
Sec. 24-T7S-R25E  
CHAVES COUNTY, WNM

EXHIBIT A



# EXHIBIT K



RECEIVED

NOV 9 1982

O. C. D.  
ARTESIA, OFFICE

## THE FOLLOWING CONSTITUTE MINIMUM BLOWOUT PREVENTER REQUIREMENTS

1. All preventers to be hydraulically operated with secondary manual controls installed prior to drilling out from under casing.
2. All connections from operating manifolds to preventers to be all steel. Hole or tube a minimum of one inch in diameter.
3. The available closing pressure shall be at least 15% in excess of that required with sufficient volume to operate the BOP's.
4. All connections to and from preventer to have a pressure rating equivalent to that of the BOP's.
5. Hole must be kept filled on trips below intermediate casing.

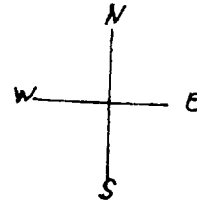
EXHIBIT C

# YATES PETROLEUM CORPORATION

RECEIVED

NOV 9 1982

O. C. D.  
ARTESIA, OFFICE



Reserve Pit bottom  
be at ground level  
-111.

