

UNITED STATES  
DEPARTMENT OF THE INTERIOR  
GEOLOGICAL SURVEYNM OIL CONS. COMMISSION  
Draper DD  
Artesia, NM, 88203RECEIVED  
NOV 4 1982  
OIL & GAS  
MINERALS MGMT. SERVICE  
ROSWELL, NEW MEXICO

## APPLICATION FOR PERMIT TO DRILL, DEEPEN, OR PLUG BACK

## 1a. TYPE OF WORK

DRILL ☒DEEPEN ☐PLUG BACK ☐

## b. TYPE OF WELL

OIL  
WELL ☐GAS  
WELL ☒OTHER ☐

## 2. NAME OF OPERATOR

Yates Petroleum Corporation ✓

## 3. ADDRESS OF OPERATOR

207 S. 4th, Artesia, New Mexico 88210

## 4. LOCATION OF WELL (Report location clearly and in accordance with any State requirements.)

At surface  
1980' FWL and 660' FNLAt proposed prod. zone  
same

## 14. DISTANCE IN MILES AND DIRECTION FROM NEAREST TOWN OR POST OFFICE\*

Approximately 26 miles NE of Roswell, NM

## 15. DISTANCE FROM PROPOSED\*

LOCATION TO NEAREST  
PROPERTY OR LEASE LINE, FT.  
(Also to nearest drlg. unit line, if any)

660'

## 18. DISTANCE FROM PROPOSED LOCATION\*

TO NEAREST WELL, DRILLING, COMPLETED,  
OR APPLIED FOR, ON THIS LEASE, FT.

## 16. NO. OF ACRES IN LEASE

200

## 19. PROPOSED DEPTH

4400'

17. NO. OF ACRES ASSIGNED  
TO THIS WELL

160

## 20. ROTARY OR CABLE TOOLS

Rotary

## 21. ELEVATIONS (Show whether DF, RT, GR, etc.)

3639.3' GL

## 22. APPROX. DATE WORK WILL START\*

ASAP

## 23.

## PROPOSED CASING AND CEMENTING PROGRAM

SIZE OF HOLE	SIZE OF CASING	WEIGHT PER FOOT	SETTING DEPTH	QUANTITY OF CEMENT
14 3/4"	10 3/4"	40.5# J-55	875'	650 sx circulated
7 7/8"	4 1/2"	9.5#	TD	350 sx

We propose to drill and test the Abo and intermediate formations. Approximately 875' of surface casing will be set and cement circulated to shut off gravel and casing. If needed (lost circulation) 8 5/8" intermediate casing will be run to 1500' and cemented with enough cement calculated to tie back into the surface casing. If commercial, production casing will be run and cemented with adequate cover, perforated, and stimulated as needed for production.

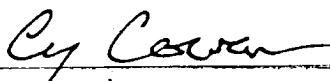
MUD PROGRAM: FW gel & LCM to 875', KCL & starch to 3500', Brine & KCL water to TD.

BOP PROGRAM: BOP's will be installed at the offset and tested daily.

IN ABOVE SPACE DESCRIBE PROPOSED PROGRAM: If proposal is to deepen or plug back, give data on present productive zone and proposed new productive zone. If proposal is to drill or deepen directionally, give pertinent data on subsurface locations and measured and true vertical depths. Give blowout preventer program, if any.

## 24.

SIGNED



TITLE Regulatory Coordinator DATE 10/14/82

(This space for Federal or State office use)

(Orig. Sgd.) GEORGE H. STEWART

PERMIT NO.

APPROVAL DATE

APPROVE BY

NOV 9 1982

TITLE

DATE

CONDITIONS OF APPROVAL, IF ANY:

UNITED STATES  
DEPARTMENT OF THE INTERIOR  
GEOLOGICAL SURVEY

## OIL CONSERVATION DIVISION

STATE OF NEW MEXICO  
ENERGY AND MINERALS DEPARTMENTP. O. BOX 2088  
SANTA FE, NEW MEXICO 87501Form C-102  
Revised 10-1-79

All distances must be from the outer boundaries of the Section.

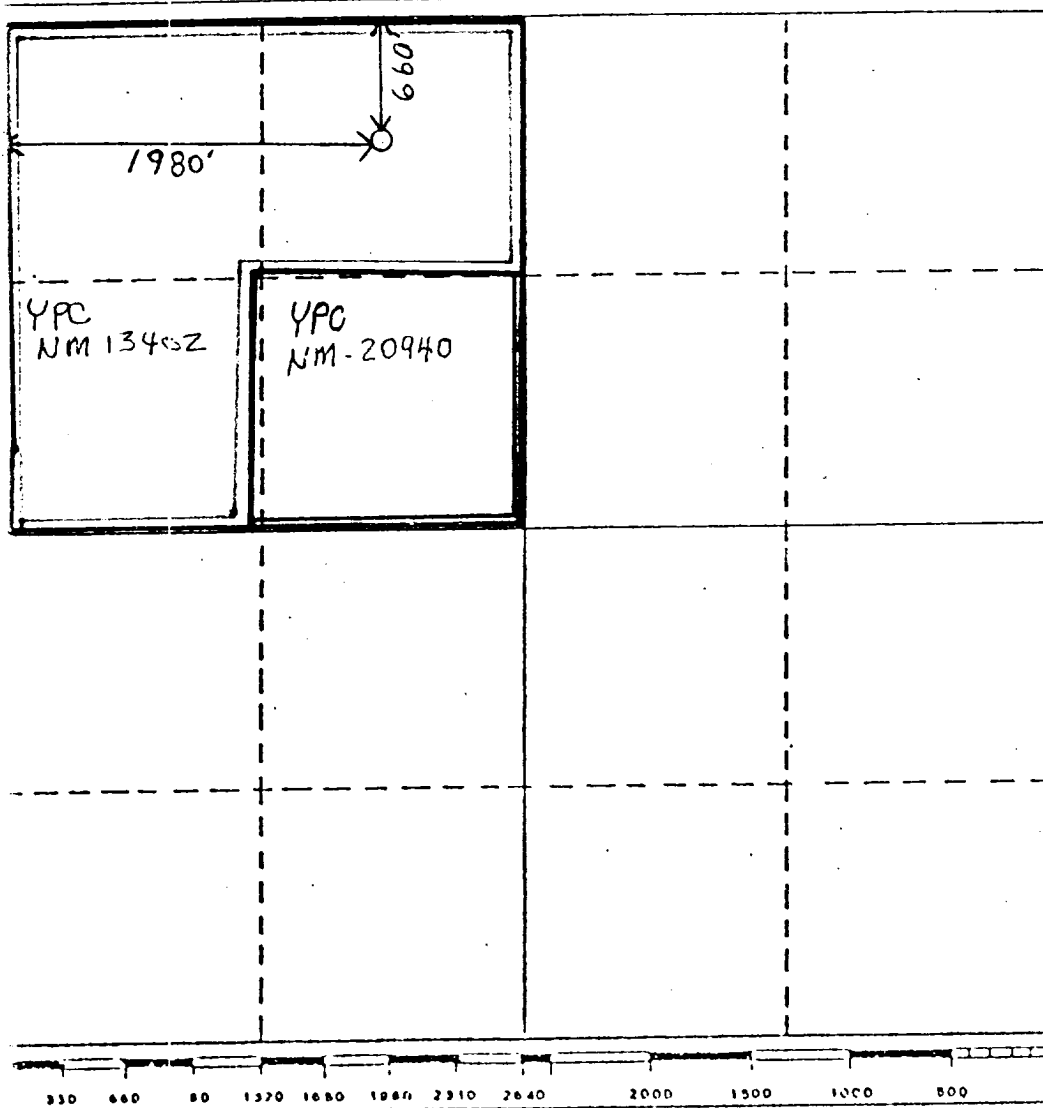
Operator <b>YATES PETROLEUM CORPORATION</b>			Lease <b>Beard "QQ" Federal</b>		Well No. <b>2</b>
Unit Letter <b>C</b>	Section <b>18</b>	Township <b>7 South</b>	Range <b>26 East</b>	County <b>Chaves</b>	
Actual Footage Location of Well: <b>660</b> feet from the <b>North</b> line and <b>1980</b> feet from the <b>West</b> line					
Ground Level Elev. <b>3639.3' GL</b>	Producing Formation <b>ABO</b>		Pool <b>PECOS Slope ABO</b>		Dedicated Acreage: <b>160</b> Acres

1. Outline the acreage dedicated to the subject well by colored pencil or hachure marks on the plat below.
2. If more than one lease is dedicated to the well, outline each and identify the ownership thereof (both as to working interest and royalty).
3. If more than one lease of different ownership is dedicated to the well, have the interests of all owners been consolidated by communitization, unitization, force-pooling, etc?

☒ Yes ☐ No If answer is "yes," type of consolidation To be Communitized

If answer is "no," list the owners and tract descriptions which have actually been consolidated. (Use reverse side of this form if necessary.)

No allowable will be assigned to the well until all interests have been consolidated (by communitization, unitization, forced-pooling, or otherwise) or until a non-standard unit, eliminating such interests, has been approved by the Division.



## CERTIFICATION

I hereby certify that the information contained herein is true and complete to the best of my knowledge and belief.

*Cy Cowan*

Name

Cy Cowan

Position

Regulatory Coordinator

Company

Yates Petroleum Corp.

Date

11/5/82

I hereby certify that the well location shown on this plat was plotted from field notes of actual surveys made by me or under my supervision, and that the same is true and correct to the best of my knowledge and belief.

Date Surveyed

SEE ORIGINAL PLAT

Registered Professional Engineer  
and/or Land Surveyor

Certificate No.

NEW MEXICO OIL CONSERVATION COMMISSION  
WELL LOCATION AND ACREAGE DEDICATION PLAT

Form C-102  
Supersedes C-128  
Effective 1-1-65

All distances must be from the outer boundaries of the Section.

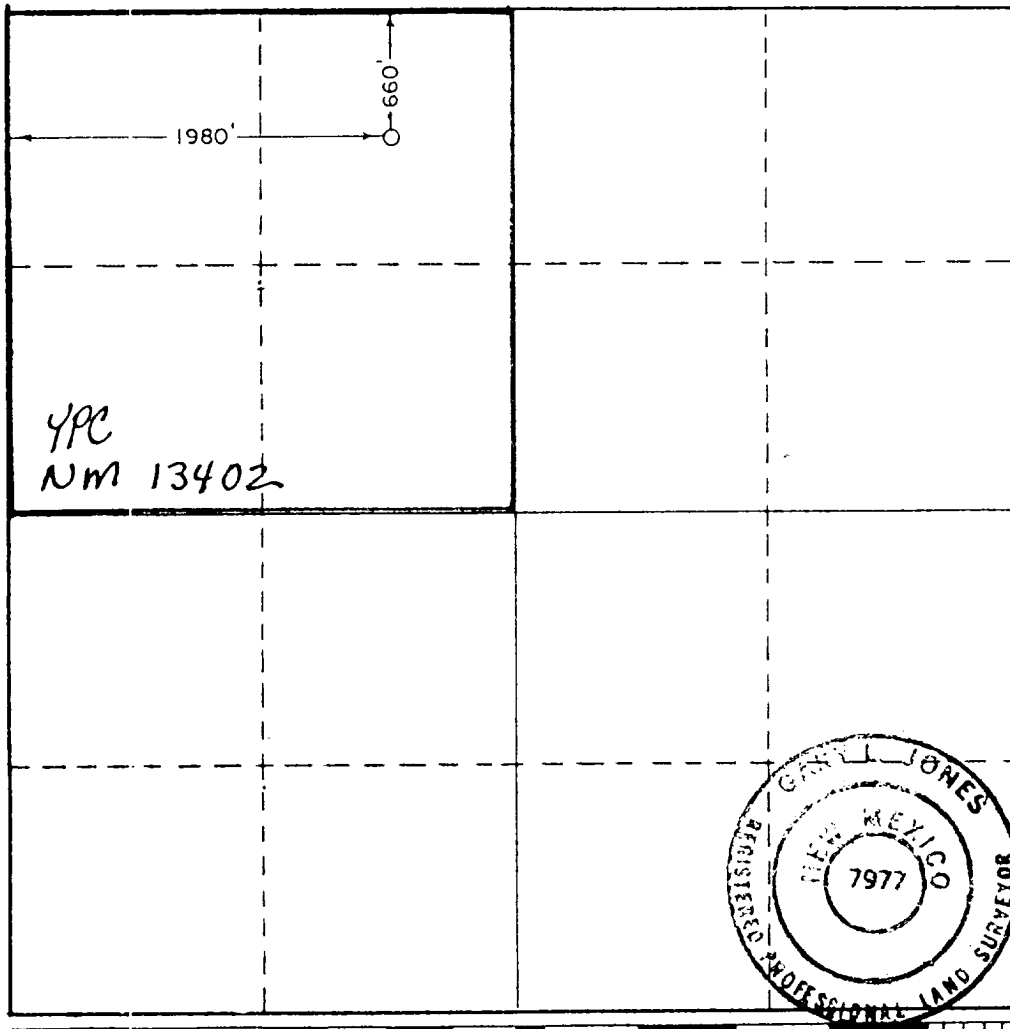
Operator <b>YATES PETROLEUM CORPORATION</b>			Lease <b>Beard "00" Federal</b>		Well No. <b>2</b>
Unit Letter <b>C</b>	Section <b>18</b>	Township <b>7 South</b>	Range <b>26 East</b>	County <b>Chaves</b>	
Actual Footage Location of Well:					
<b>660</b> feet from the <b>North</b> line and		<b>1980</b> feet from the <b>West</b> line			
Ground Level Elev. <b>3639.3'</b>	Producing Formation <b>ABO</b>	Pore <b>PECOS Slope ABO</b>	Dedicated Acreage: <b>160</b> Acres		

1. Outline the acreage dedicated to the subject well by colored pencil or hachure marks on the plat below.
2. If more than one lease is dedicated to the well, outline each and identify the ownership thereof (both as to working interest and royalty).
3. If more than one lease of different ownership is dedicated to the well, have the interests of all owners been consolidated by communitization, unitization, force-pooling, etc?

☐ Yes ☒ No If answer is "yes," type of consolidation \_\_\_\_\_

If answer is "no," list the owners and tract descriptions which have actually been consolidated. (Use reverse side of this form if necessary.) \_\_\_\_\_

No allowable will be assigned to the well until all interests have been consolidated (by communitization, unitization, forced-pooling, or otherwise) or until a non-standard unit, eliminating such interests, has been approved by the Commission.



CERTIFICATION

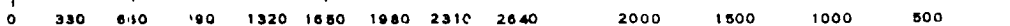
I hereby certify that the information contained herein is true and complete to the best of my knowledge and belief.

*Cy Cowan*

Name  
**Cy Cowan**  
Position  
**Regulatory Coordinator**  
Company  
**Yates Petroleum Corp.**  
Date  
**10/14/82**

I hereby certify that the well location shown on this plat was plotted from field notes of actual surveys made by me or under my supervision, and that the same is true and correct to the best of my knowledge and belief.

Date Surveyed  
**October 1, 1982**  
Registered Professional Engineer and/or Land Surveyor  
*Gayl Jones*  
Certificate No.  
**7977**



## YATES PETROLEUM CORPORATION

Beard "OO" Federal #2  
660' FNL and 1980' FWL  
Sec. 18-T7S-R26E

In conjunction with Form 9-331C, Application for Permit to Drill subject well, Yates Petroleum Corporation submits the following ten items of pertinent information in accordance with USGS requirements.

1. The geologic surface formation is sandy alluvium.
2. The estimated tops of geologic markers are as follows:

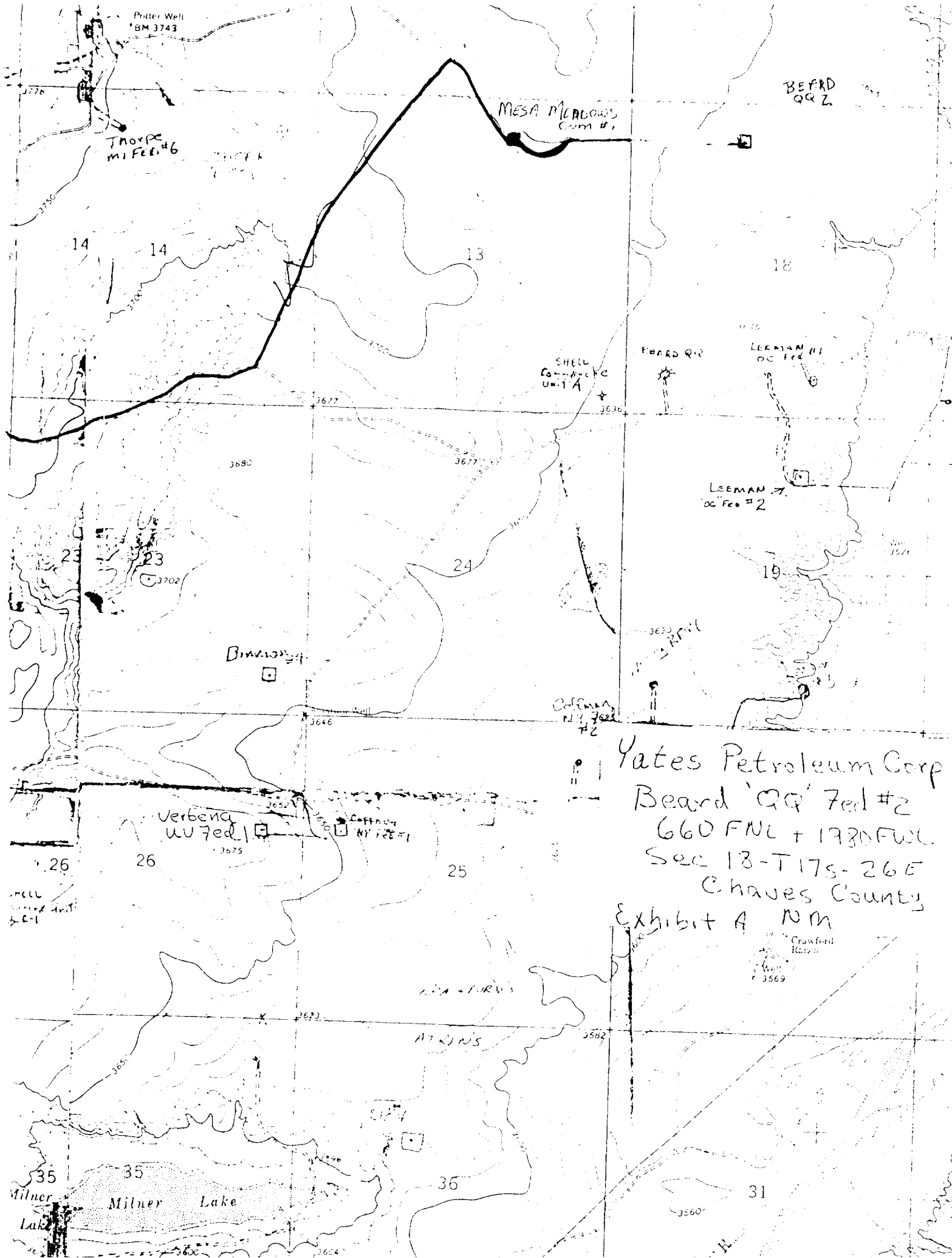
<u>San Andres</u>	<u>416'</u>
<u>Glorieta</u>	<u>1518'</u>
<u>Fullerton</u>	<u>2940'</u>
<u>Abo</u>	<u>3634'</u>
<u>TD</u>	<u>4400'</u>

3. The estimated depths at which anticipated water, oil or gas formations are expected to be encountered:

Water: 70-150'

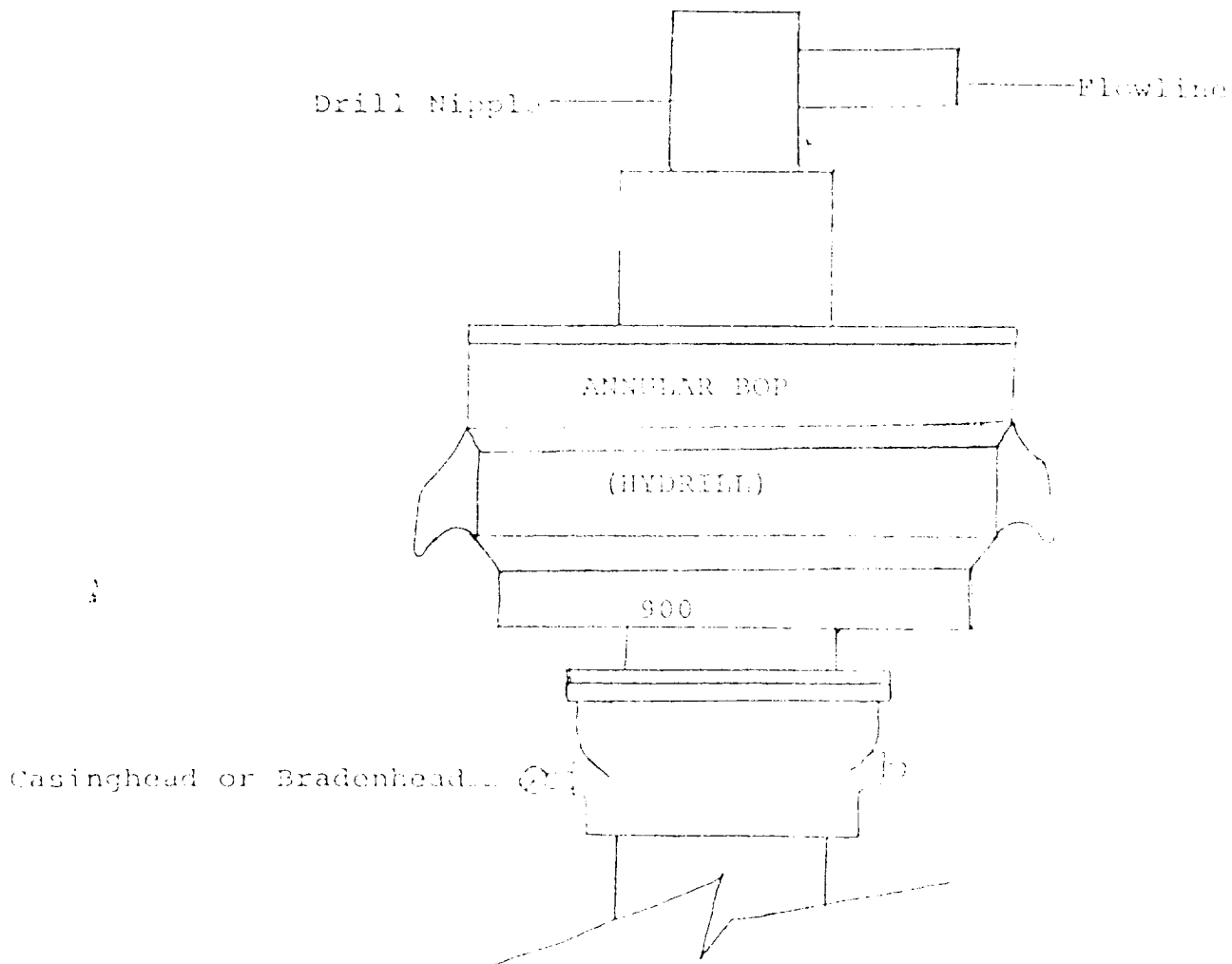
Oil or Gas: Abo 3660'

4. Proposed Casing Program: See Form 9-331C.
5. Pressure Control Equipment: See Form 9-331C and Exhibit B.
6. Mud Program: See Form 9-331C.
7. Auxiliary Equipment: Kelly Cock; pit level indicators and flow sensor equipment;  
sub with full-opening valve on floor, drill pipe connection.
8. Testing, Logging and Coring Program:  
  
Samples: Surface casing to TD.  
DST's: As warranted.  
Coring: Not anticipated.  
Logging: CNL-FDC TD to csg w/GR-CNL onto surface & DLL from TD to csg.
9. No abnormal pressures or temperatures are anticipated.
10. Anticipated starting date: As soon as possible after approval.



Yates Petroleum Corp  
Beard 'QQ' Fed #2  
660 FNL + 1780 FNL  
Sec 18-T17S-26E  
Chaves County  
Exhibit A NM

ANNULAR BOP



THE FOLLOWING CONSTITUTE MINIMUM BLOWOUT PREVENTER REQUIREMENTS

1. All preventers to be hydraulically operated with secondary manual controls installed prior to drilling out from under casing.
2. All connections from operating manifolds to preventers to be all steel. Hole or tube a minimum of one inch in diameter.
3. The available closing pressure shall be at least 15% in excess of that required with sufficient volume to operate the BOP's.
4. All connections to and from preventer to have a pressure rating equivalent to that of the BOP's.
5. Hole must be kept filled on trips below intermediate casing.

YATES PETROLEUM CORPORATION

