

DEPARTMENT OF THE INTERIOR
GEOLOGICAL SURVEY

SUNDRY NOTICES AND REPORTS ON WELLS

(Do not use this form for proposals to drill or deepen or produce from a different reservoir. Use Form 9-331-C for such proposals.)

1. oil ☐ gas ☒ well ☐ other ☐
2. NAME OF OPERATOR
Yates Petroleum Corporation
3. ADDRESS OF OPERATOR
ARTESIA, OFFICE
207 S. 4th, Artesia, New Mexico
4. LOCATION OF WELL (REPORT LOCATION CLEARLY. See space 17 below.)
AT SURFACE: 1980' FSL and 660' FEL
AT TOP PROD. INTERVAL:
AT TOTAL DEPTH: same

16. CHECK APPROPRIATE BOX TO INDICATE NATURE OF NOTICE, REPORT, OR OTHER DATA

REQUEST FOR APPROVAL TO: SUBSEQUENT REPORT OF:
TEST WATER SHUT-OFF ☐ ☐
FRACTURE TREAT ☐ ☐
SHOOT OR ACIDIZE ☐ ☐
REPAIR WELL ☐ ☐
PULL OR ALTER CASING ☐ ☐
MULTIPLE COMPLETE ☐ ☐
CHANGE ZONES ☐ ☐
ABANDON* ☐ ☐
(other) move location

17. DESCRIBE PROPOSED OR COMPLETED OPERATIONS (Clearly state all pertinent details, and give pertinent dates, including estimated date of starting any proposed work. If well is directionally drilled, give subsurface locations and measured and true vertical depths for all markers and zones pertinent to this work.)*

Move location from: 660' FSL and 660' FEL
Sec. 34-T7S-R26E

to: 1980' FSL and 660' FEL
Sec. 34-T7S-R26E

5. LEASE
NM-18962
6. IF INDIAN, ALLOTTEE OR TRIBE NAME
7. UNIT AGREEMENT NAME
8. FARM OR LEASE NAME
Witter "VW" Federal
9. WELL NO.
1
10. FIELD OR WILDCAT NAME
Under Pecos Slope Abo
11. SEC., T., R., M., OR BLK. AND SURVEY OR AREA
Sec. 34-T7S-R26E
12. COUNTY OR PARISH
Chaves
13. STATE
NM
14. API NO.
15. ELEVATIONS (SHOW DF, KDB, AND WD)
3767.8' GL

(NOTE: Report results of multiple completion or zone change on Form 9-330.)

RECEIVED
DEC 2 1982

OIL & GAS
U.S. GEOLOGICAL SURVEY
ROSWELL, NEW MEXICO

Subsurface Safety Valve: Manu. and Type Set @ Ft.

18. I hereby certify that the foregoing is true and correct

SIGNED *David R. Glass* TITLE Regulatory Coordinator DATE 12/2/82

APPROVED (ORIG. SGD.) DAVID R. GLASS
(This space for Federal or State office use)
APPROVED BY CONDITIONS OF APPROVAL DEC 21 1982

JAMES A. GILLHAM
DISTRICT SUPERVISOR

See Instructions on Reverse Side

Posted 12-7-82
Amended location

NEW MEXICO OIL CONSERVATION COMMISSION
WELL LOCATION AND ACREAGE DEDICATION PLAT

Form C-102
Supersedes C-128
Effective 1-1-65

All distances must be from the outer boundaries of the Section.

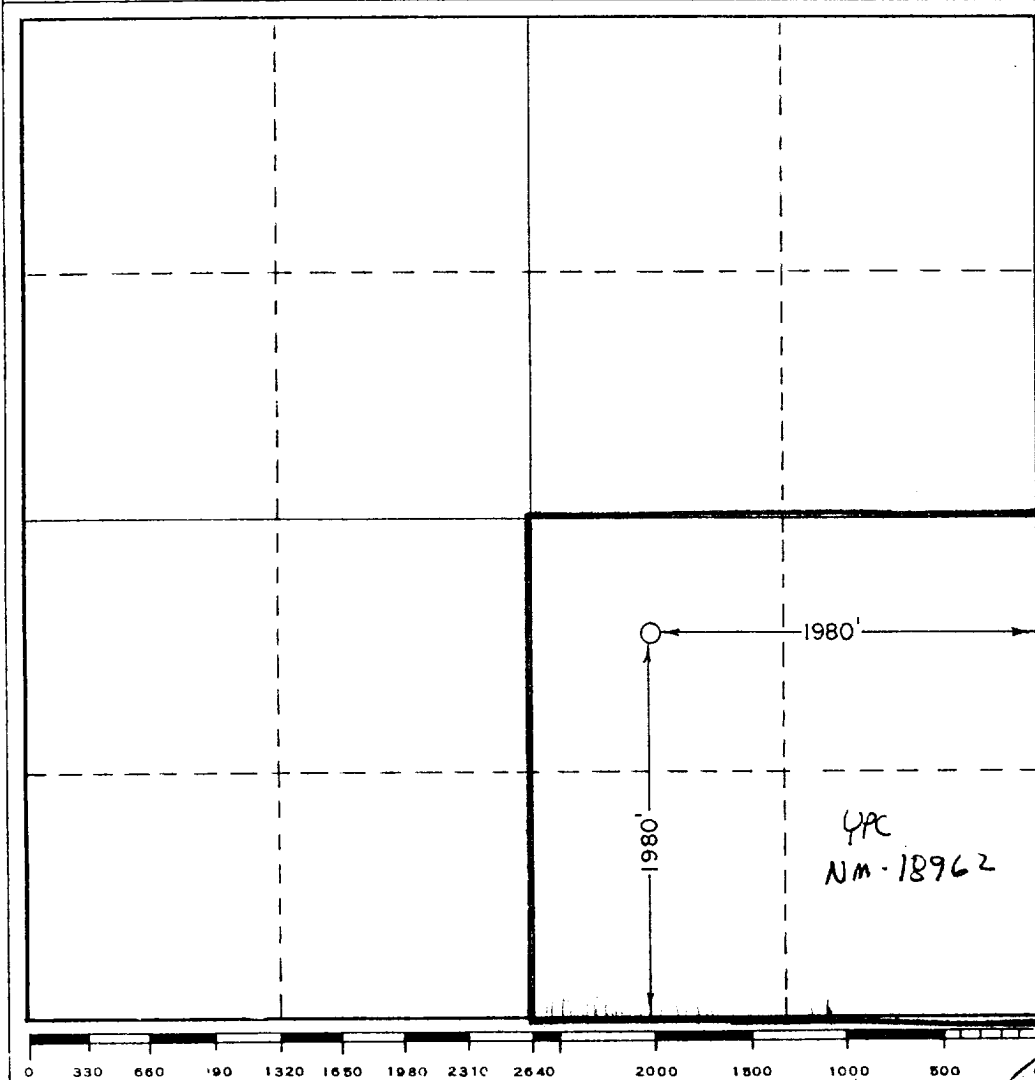
Operator YATES PETROLEUM CORPORATION			Lease Witter "VW" Federal			Well No. 1		
Unit Letter J	Section 34	Township 7 South	Range 26 East	County Chaves				
Actual Footage Location of Well: 1980 feet from the South line and 1980 feet from the East line								
Ground Level Elev. 3767.8'	Producing Formation Abo			Pool Undes. Pecos Slope Abo			Dedicated Acreage: 160 Acres	

1. Outline the acreage dedicated to the subject well by colored pencil or hachure marks on the plat below.
2. If more than one lease is dedicated to the well, outline each and identify the ownership thereof (both as to working interest and royalty).
3. If more than one lease of different ownership is dedicated to the well, have the interests of all owners been consolidated by communitization, unitization, force-pooling, etc?

☐ Yes ☐ No If answer is "yes," type of consolidation _____

If answer is "no," list the owners and tract descriptions which have actually been consolidated. (Use reverse side of this form if necessary.) _____

No allowable will be assigned to the well until all interests have been consolidated (by communitization, unitization, forced-pooling, or otherwise) or until a non-standard unit, eliminating such interests, has been approved by the Commission.



CERTIFICATION

I hereby certify that the information contained herein is true and complete to the best of my knowledge and belief.

Ken Beardemphl

Name

Ken Beardemphl

Position

Regulatory Coordinator

Company

Yates Petroleum Corp.

Date

12/2/82

I hereby certify that the well location shown on this plat was plotted from field notes of actual surveys made by me or under my supervision, and that the same is true and correct to the best of my knowledge and belief.

Date Surveyed

November 29, 1982

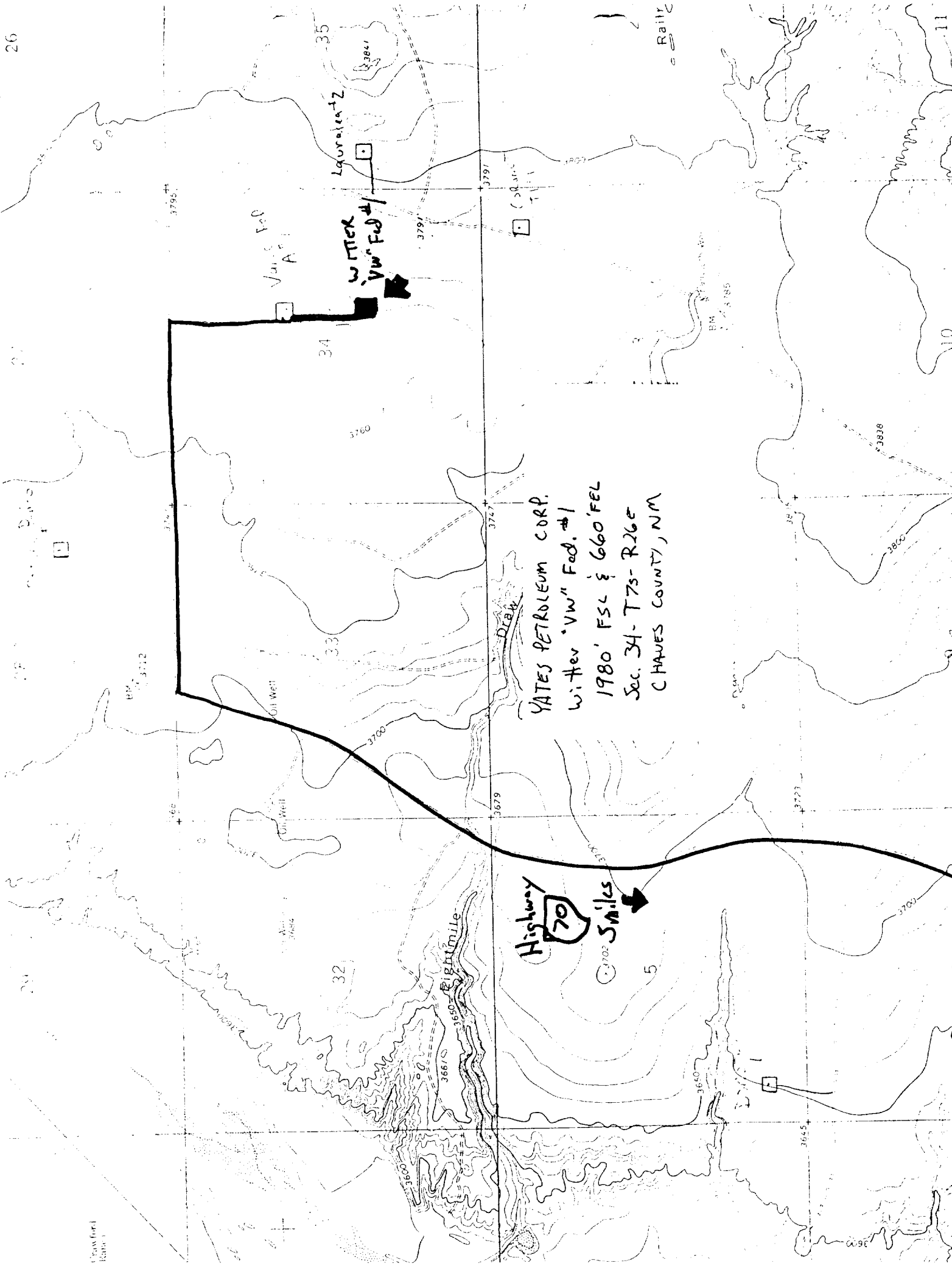
Registered Professional Engineer and/or Land Surveyor

Sam [Signature]

Certificate No.

7977

Grayford
Elev. 3



YATES PETROLEUM CORP.
Witter VW Fod #1
1980' FSL & 660' FEL
Sec. 34-T7s-R26e
CHAVES COUNTY, NM

Highway 70
5 miles

Witter VW Fod #1

Liquor store

Railroad

Witter VW Fod #1

Oil Well

32

34

35

10

11



UNITED STATES DEPARTMENT OF THE INTERIOR
OFFICE OF THE SECRETARY
Minerals Management Service
ROSWELL DISTRICT

#1 Witter

SPECIAL APPROVAL STIPULATIONS

THE FOLLOWING DATA IS REQUIRED ON THE WELL SIGN

YATES PETROLEUM CORPORATION
1 Witter "VW" Federal
NW $\frac{1}{4}$ SE $\frac{1}{4}$ sec. 34., T.7S., R.26E.
Chaves County, New Mexico
Lease No. NM-18962

THE SPECIAL STIPULATIONS CHECK MARKED BELOW ARE APPLICABLE TO THE ABOVE-DESCRIBED WELL AND APPROVAL OF THIS APPLICATION TO DRILL IS CONDITIONED UPON COMPLIANCE WITH SUCH STIPULATIONS IN ADDITION TO THE GENERAL REQUIREMENTS. EACH PERMITTEE HAS THE RIGHT OF ADMINISTRATIVE APPEAL TO THESE STIPULATIONS PURSUANT TO TITLE 30 CFR 290.

☒ A. The Minerals Management Service office is to be notified at:

- ☒ (505) 622-1332 Roswell
☐ (505) 756-9838 Artesia
☐ (505) 393-5146 Hobbs

in sufficient time for a representative to witness:

- ☒ 1. Spudding
☒ 2. Cementing casing
 10 3/4 inch
 8 3/8 inch
 4 1/2 inch
☐ 3. BOP tests

☐ B. At least one working day prior to constructing the well pad, access roads and/or related facilities, the operator or dirt contractor shall notify the authorized officer of the surface management agency. The surface management agency may be contacted at:

- ☐ BLM phone (505) 887-6544 Carlsbad, New Mexico
☐ BLM phone (505) 622-7670 Roswell, New Mexico
☐ _____

He shall also notify the surface management agency within two working days after completion of earth-moving activities.

☒ C. Roads in the area of operation of this authorization will require surfacing.

☒ D. 10 3/4" surface casing should be set in the Rustler Anhydrite formation and cement circulated to the surface. If surface casing is set at a lesser depth, the _____ casing must be cemented from the casing shoe to the surface or cemented to the surface through a stage tool set at least 50 feet below the top of the Rustler after cementing around the shoe with sufficient cement to fill to the base of the salt section.

☒ E. Before drilling below the 10 3/4" casing, the blowout preventer assembly will consist of a minimum of ~~one annular type and two ram type preventers.~~

☒ F. Minimum required fill of cement behind the 8 3/8" (if used) casing is to tie back to surface casing, 4" casing: see attached memo.

☒ G. After setting the 10 3/4" casing string and before drilling into the Shrute formation, the blowout preventers and related control equipment shall be pressure tested to rated working pressures ~~by an independent service company.~~ Any equipment failing to test satisfactorily shall be repaired or replaced. ~~This office should be notified in sufficient time for a representative to witness the tests and shall be notified of the pressure test report.~~

☐ H. Mud system monitoring equipment, with derrick floor indicators and visual and audio alarms, shall be installed and operating before drilling into the _____ formation and used until production casing is run and cemented. Monitoring equipment shall consist of the following:

- ☐ 1. A recording pit level indicator to determine pit volume gains and losses.
- ☐ 2. A mud volume measuring device for accurately determining mud volume necessary to fill the hole on trips.
- ☐ 3. A flow sensor on the flow-line to warn of any abnormal mud returns from the well.

☒ I. A kelly cock will be installed and maintained in operable condition.

☐ J. A Communitization Agreement covering the acreage dedicated to the well must be filed for approval with the Minerals Management Service, P.O. Box 26124, Albuquerque, New Mexico 87125. The effective date of the agreement must be prior to any sales.

☒ K. Above ground structures, not subject to applicable safety requirements shall be painted. The paint color is to simulate:

☒ Sandstone Brown, Fed. Std. 595-20318 or 30318

☐ Sagebrush Gray, Fed. Std. 595-26357 or 36357

☐ _____

☐ L. A Gamma Ray-Compensated Neutron log is required from the base of the salt section to the surface with cable speed not to exceed 30 feet per minute.

M. Rehabilitation

☒ At least 3 working days prior to commencing any of the following rehabilitation activities, the operator shall notify the appropriate surface managing agency, shown in part B.

☒ 1. Upon the conclusion of drilling and completion operations when mud pits are dry they will be leveled, plastic will be removed and area reseeded with mixture No. _____ shown on last page of General Requirements.

☒ 2. Following the down-hole plugging and abandonment of all operation:

☒ a. The drill pad and all of access road shall be ripped to a minimum of 12" in depth. Ripping shall be on the contour with rips being approximately 3 feet or less apart.

☒ b. The drill site and all of access road will be reseeded with mixture No. 1 shown on the last page of the General Requirements.

☒ c. All ripped surfaces are to be protected from vehicular travel by constructing a dead-end ditch and earthen barricade at the entrance to these ripped areas. The barricade is to be constructed using spoil material from the ditch and should be of sufficient magnitude to discourage vehicle entry.

☐ d. Private Surface: Abandonment stipulations to coincide with operator-landowner agreement. (Where no agreement exists, BLM will be requested to provide abandonment stipulations.)

☒ e. The surface location is to be cleaned and leveled.

☒ 3. Modifications in the rehabilitation stipulations made necessary by unforeseen circumstances or improvements in rehabilitation methods may be made when the Notice of Intention to Abandon is filed.

☐ N. Other:

1) Road + pad will be caliche - material will be obtained from a
+ in the SE 1/4, SE 1/4, Sec. 15, T 75, R 26 E
2) A sign to keep traffic off the ditches will be placed with the

UNITED STATES
DEPARTMENT OF THE INTERIOR
GEOLOGICAL SURVEY

NM OIL CONS. COMMISSION

Drawer DD

Artesia, NM 88210

5. LEASE DESIGNATION AND SERIAL NO.

NM-18962

6. IF INDIAN, ALLOTTEE OR TRIBE NAME

7. UNIT AGREEMENT NAME

8. FARM OR LEASE NAME

Witter "VW" Federal

9. WELL NO.

1

10. FIELD AND POOL, OR WILDCAT

Undes. Pecos Slope Abo

11. SEC., T., R., M., OR BLK.
AND SURVEY OR AREA

Sec. 34-T7S-R26E

12. COUNTY OR PARISH 13. STATE

Chaves

NM

1a. TYPE OF WORK

DRILL ☒DEEPEN ☐PLUG BACK ☐

b. TYPE OF WELL

OIL
WELL ☐GAS
WELL ☒

OTHER

SINGLE
ZONE ☐MULTIPLE
ZONE ☐

2. NAME OF OPERATOR

Yates Petroleum Corporation ✓

3. ADDRESS OF OPERATOR

207 S. 4th, Artesia, New Mexico 88210

4. LOCATION OF WELL (Report location clearly and in accordance with any State requirements.)*

At surface
660' FSL and 660' FELAt proposed prod. zone
same

14. DISTANCE IN MILES AND DIRECTION FROM NEAREST TOWN OR POST OFFICE*

Approximately 18 miles ENE of Roswell, New Mexico.

15. DISTANCE FROM PROPOSED*

LOCATION TO NEAREST
PROPERTY OR LEASE LINE, FT.
(Also to nearest drlg. unit line, if any)

660'

16. NO. OF ACRES IN LEASE

17. NO. OF ACRES ASSIGNED
TO THIS WELL

160

18. DISTANCE FROM PROPOSED LOCATION*
TO NEAREST WELL, DRILLING, COMPLETED,
OR APPLIED FOR, ON THIS LEASE, FT.

19. PROPOSED DEPTH

4850'

20. ROTARY OR CABLE TOOLS

Rotary

21. ELEVATIONS (Show whether DF, RT, GR, etc.)

3788.7' GL

22. APPROX. DATE WORK WILL START*

ASAP

23.

PROPOSED CASING AND CEMENTING PROGRAM

SIZE OF HOLE	SIZE OF CASING	WEIGHT PER FOOT	SETTING DEPTH	QUANTITY OF CEMENT
14 3/4"	10 3/4"	40.5# J-55	1050'	800 sx circulated
7 7/8"	4 1/2"	9.5#	TD	450 sx

We propose to drill and test the Abo and intermediate formations. Approximately 1050' of surface casing will be set and cement circulated to shut off gravel and caving. If needed (lost circulation) 8 5/8" intermediate casing will be run to 1500' and cemented with enough cement calculated to tie back into the surface casing. If commercial, production casing will be run and cemented with adequate cover, perforated and stimulated as needed for production.

MUD PROGRAM: FW gel & LCM to 1050', Brine to 3200', Brine & KCL water to TD.

BOP PROGRAM: BOP's will be installed at the offset and tested daily.

GAS NOT DEDICATED.

IN ABOVE SPACE DESCRIBE PROPOSED PROGRAM: If proposal is to deepen or plug back, give data on present productive zone and proposed new productive zone. If proposal is to drill or deepen directionally, give pertinent data on subsurface locations and measured and true vertical depths. Give blowout preventer program, if any.

24.

SIGNED

TITLE Regulatory Coordinator DATE 11/2/82

(This space for Federal or State office use)

(Orig. Sgd.) GEORGE H. STEWART

PERMIT NO.

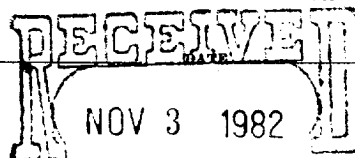
116 1362

APPROVAL DATE

APPROVED BY

CONDITIONS OF APPROVAL, IF ANY: NO

TITLE

OIL & GAS
U.S. GEOLOGICAL SURVEY
ROSWELL, NEW MEXICO

**W MEXICO OIL CONSERVATION COMMISSION
WELL LOCATION AND ACREAGE DEDICATION PLAT**

Form C-102
Supersedes C-128
Effective 1-1-65

All distances must be from the outer boundaries of the Section.

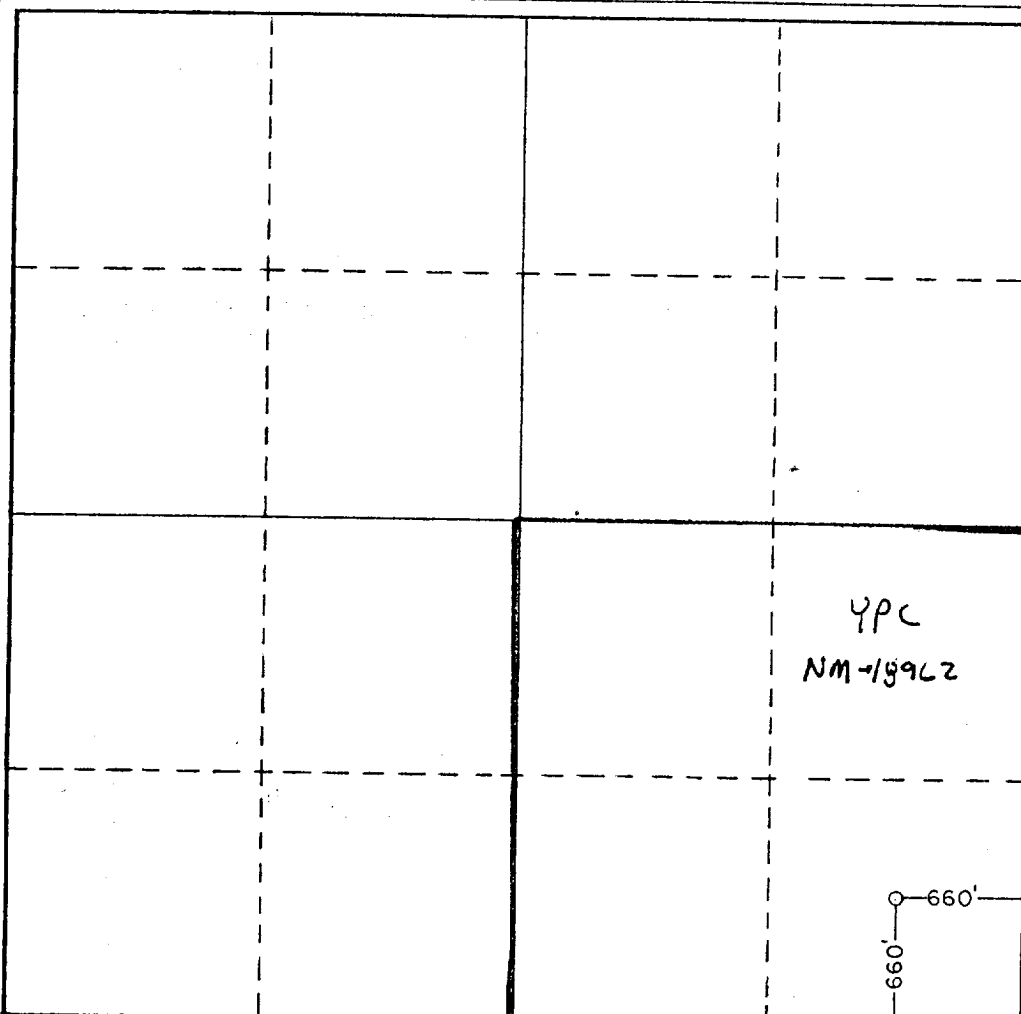
Operator YATES PETROLEUM CORPORATION			Lease Witter "VW" Federal		Well No. 1
Unit Letter P	Section 34	Township 7 South	Range 26 East	County Chaves	
Actual Footage Location of Well:					
660 feet from the South line and		660 feet from the East line			
Ground Level Elev. 3788.7'	Producing Formation Abo	Pool Unders. Pecos Slope Abo	Dedicated Acreage: 160 Acres		

1. Outline the acreage dedicated to the subject well by colored pencil or hachure marks on the plat below.
2. If more than one lease is dedicated to the well, outline each and identify the ownership thereof (both as to working interest and royalty).
3. If more than one lease of different ownership is dedicated to the well, have the interests of all owners been consolidated by communitization, unitization, force-pooling, etc?

☐ Yes ☐ No If answer is "yes," type of consolidation _____

If answer is "no," list the owners and tract descriptions which have actually been consolidated. (Use reverse side of this form if necessary.) _____

No allowable will be assigned to the well until all interests have been consolidated (by communitization, unitization, forced-pooling, or otherwise) or until a non-standard unit, eliminating such interests, has been approved by the Commission.



CERTIFICATION

I hereby certify that the information contained herein is true and complete to the best of my knowledge and belief.

Ken Beardemphl

Name

Ken Beardemphl

Position

Regulatory Coordinator

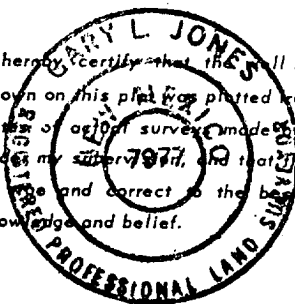
Company

Yates Petroleum Corp.

Date

11/2/82

I hereby certify that the well location shown on this plat was plotted from field notes of a recent survey made by me or under my supervision, and that the same is true and correct to the best of my knowledge and belief.



Date Surveyed

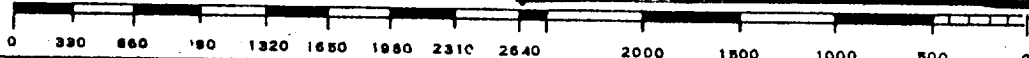
October 26, 1982

Registered Professional Engineer and/or Land Surveyor

Dan G. Jones

Certificate No.

7977



YATES PETROLEUM CORPORATION

Witter "VW" Federal #1

660' FSL and 660' FEL

Sec. 34-T7S-R26E

In conjunction with Form 9-331C, Application for Permit to Drill subject well, Yates Petroleum Corporation submits the following ten items of pertinent information in accordance with USGS requirements.

1. The geologic surface formation is sandy alluvium.

2. The estimated tops of geologic markers are as follows:

<u>San Andres</u>	<u>906'</u>
<u>Glorieta</u>	<u>2095'</u>
<u>Fullerton</u>	<u>3512'</u>
<u>Abo</u>	<u>4223'</u>
<u>TD</u>	<u>4850'</u>

3. The estimated depths at which anticipated water, oil or gas formations are expected to be encountered:

Water: Approximately 300'

Oil or Gas: Abo 4250'

4. Proposed Casing Program: See Form 9-331C.

5. Pressure Control Equipment: See Form 9-331C and Exhibit B.

6. Mud Program: See Form 9-331C.

7. Auxiliary Equipment: Kelly Cock; pit level indicators and flow sensor equipment;
sub with full-opening valve on floor, drill pipe connection.

8. Testing, Logging and Coring Program:

Samples: Surface casing to TD.

DST's: As warranted.

Coring: As warranted.

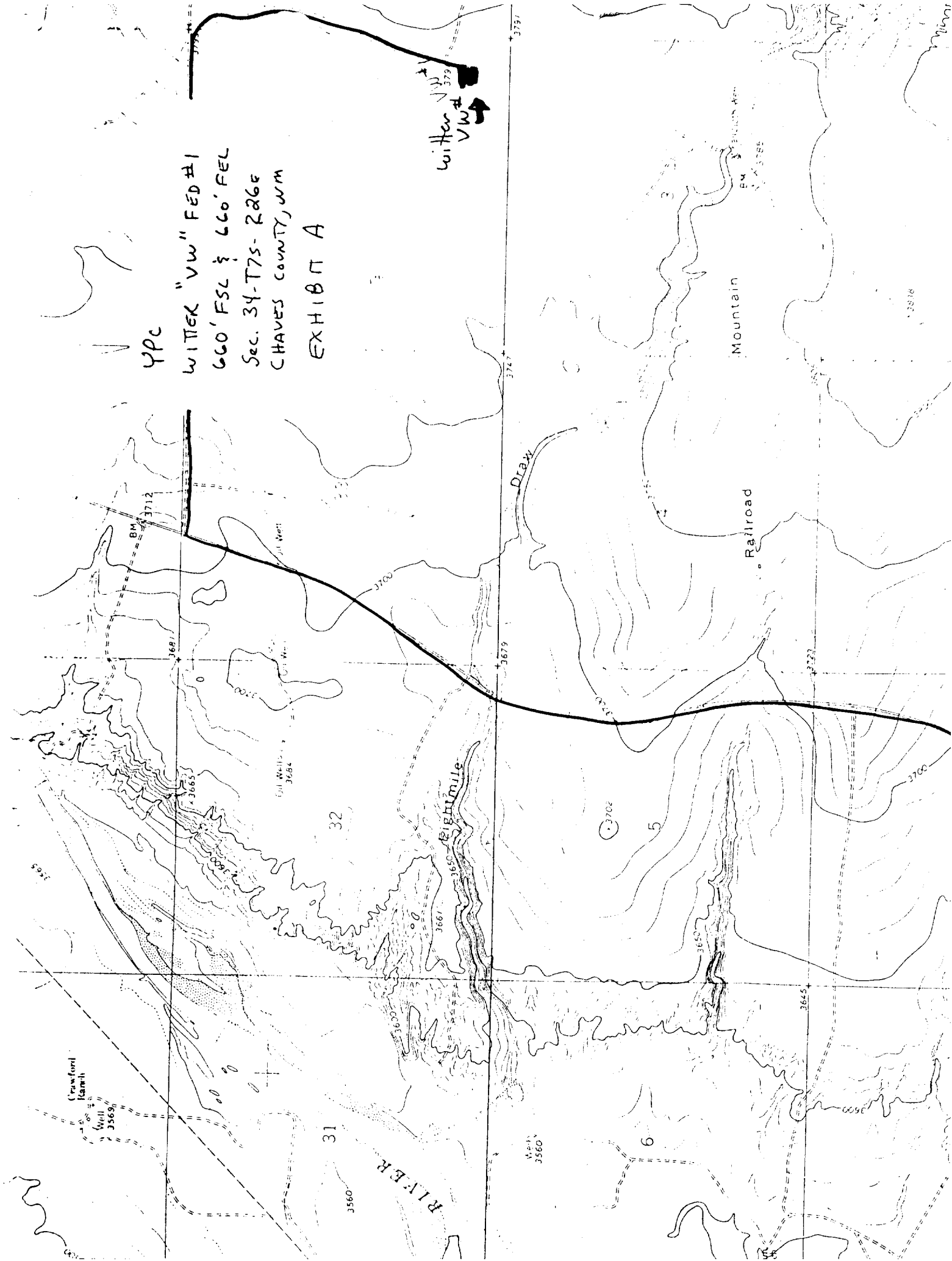
Logging: CNL-FDC TD to csq w/GR-CNL to surface & DLL from TD to csq.

9. No abnormal pressures or temperatures are anticipated.

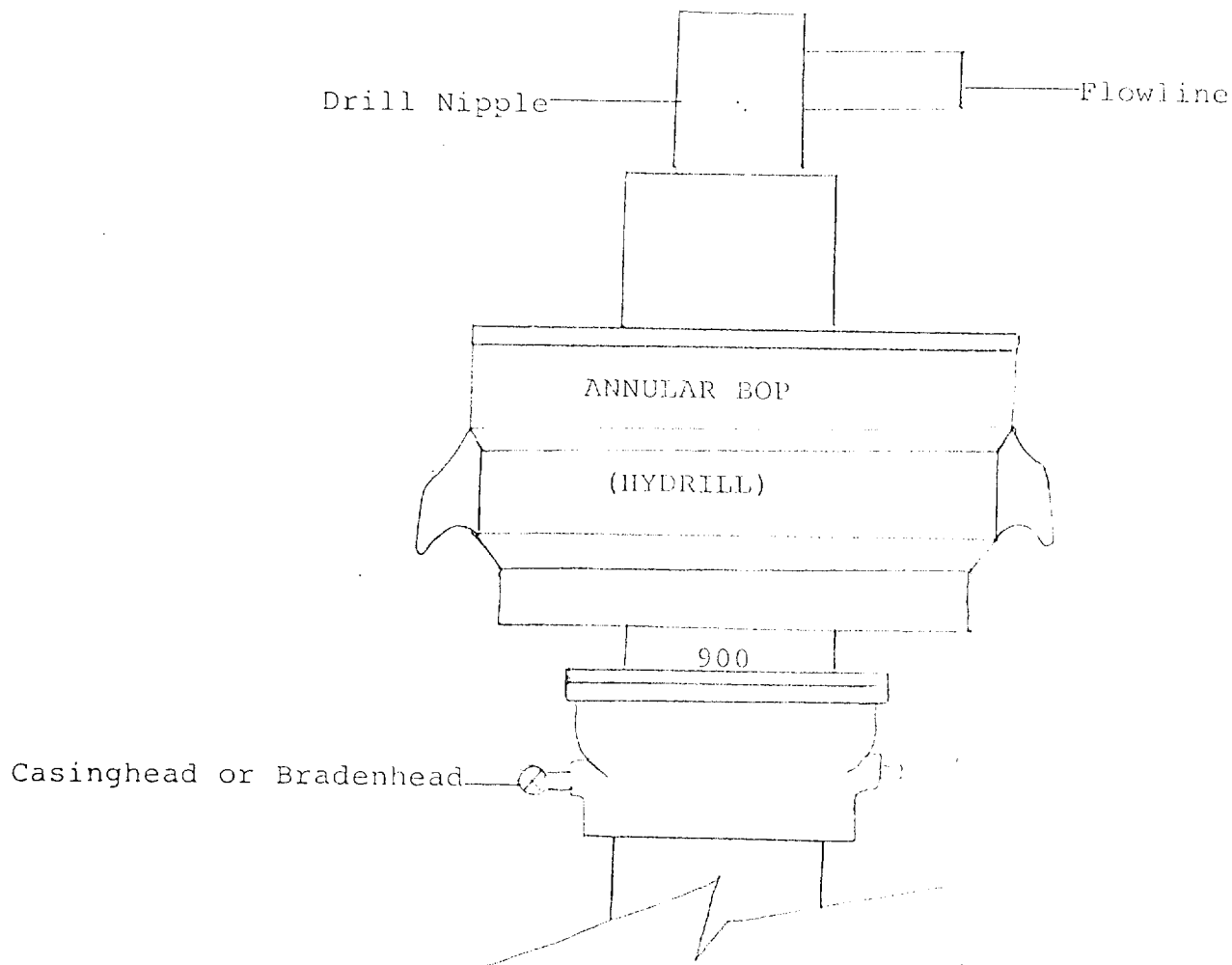
10. Anticipated starting date: As soon as possible after approval.

WITTEL "VW" FED #1
660' FSL § 660' FEL
Sec. 34-T7S-226E
CHAVES COUNTY, NM
EXHIBIT A

Witter
VW # 379



L A 11101 (1)



THE FOLLOWING CONSTITUTE MINIMUM BLOWOUT PREVENTER REQUIREMENTS

1. All preventers to be hydraulically operated with secondary manual controls installed prior to drilling out from under casing.
2. All connections from operating manifolds to preventers to be all steel. Hole or tube a minimum of one inch in diameter.
3. The available closing pressure shall be at least 15% in excess of that required with sufficient volume to operate the BOP's.
4. All connections to and from preventer to have a pressure rating equivalent to that of the BOP's.
5. Hole must be kept filled on trips below intermediate casing.

YATES PETROLEUM CORPORATION

