

UNITED STATES NM OIL CONS COMMISSION
DEPARTMENT OF THE INTERIOR DD
GEOLOGICAL SURVEY Artesia, NM 88210

30-005-61847

5. LEASE DESIGNATION AND SERIAL NO.

NM-25473

6. IF INDIAN, ALLOTTEE OR TRIBE NAME

7. UNIT AGREEMENT NAME

8. FARM OR LEASE NAME

Savage "NI" Federal

9. WELL NO.

3

10. FIELD AND POOL, OR WILDCAT

Pecos Slope Abo

11. SEC., T., R., M., OR BLK.
AND SURVEY OR AREA

Sec. 30-T6S-R26E

12. COUNTY OR PARISH 13. STATE

Chaves

NM

APPLICATION FOR PERMIT TO DRILL, DEEPEN, OR PLUG BACK

1a. TYPE OF WORK

DRILL ☒DEEPEN ☐RECEIVED PLUG BACK ☐

b. TYPE OF WELL

OIL
WELL ☐GAS
WELL ☒

OTHER

SINGLE
ZONE ☐MULTIPLE
ZONE ☐

2. NAME OF OPERATOR

Yates Petroleum Corporation

3. ADDRESS OF OPERATOR

207 S. 4th, Artesia, New Mexico 88210, OFFICE

4. LOCATION OF WELL (Report location clearly and in accordance with any State requirements.)*

At surface

660' FNL and 1650' FEL

At proposed prod. zone

same

14. DISTANCE IN MILES AND DIRECTION FROM NEAREST TOWN OR POST OFFICE*

31 miles northeast of Roswell, NM.

15. DISTANCE FROM PROPOSED*

LOCATION TO NEAREST
PROPERTY OR LEASE LINE, FT.
(Also to nearest drlg. unit line, if any)

660'

16. NO. OF ACRES IN LEASE

320

17. NO. OF ACRES ASSIGNED
TO THIS WELL

160

18. DISTANCE FROM PROPOSED LOCATION*

TO NEAREST WELL, DRILLING, COMPLETED,
OR APPLIED FOR, ON THIS LEASE, FT.

1300'

19. PROPOSED DEPTH

4200'

20. ROTARY OR CABLE TOOLS

Rotary

21. ELEVATIONS (Show whether DF, RT, GR, etc.)

3694.2' GL

22. APPROX. DATE WORK WILL START*

ASAP

23.

PROPOSED CASING AND CEMENTING PROGRAM

SIZE OF HOLE	SIZE OF CASING	WEIGHT PER FOOT	SETTING DEPTH	QUANTITY OF CEMENT
14 3/4"	10 3/4"	40.5# J-55	990'	650 sx circulated
7 7/8"	4 1/2"	9.5#	TD	350 sx

We propose to drill and test the Abo and intermediate formations. Approximately 990' of surface casing will be set and cement circulated to shut off gravel and caving. If needed (lost circulation) 8 5/8" intermediate casing will be run to 1500' and cemented with enough cement calculated to tie back into the surface casing. If commercial, production casing will be run and cemented with adequate cover, perforated, and stimulated as needed for production.

MUD PROGRAM: FW gel and LCM to 990', Brine to 3200', Brine & KCL water to TD.

BOP PROGRAM: BOP's will be installed at the offset and tested daily.

GAS NOT DEDICATED.

IN ABOVE SPACE DESCRIBE PROPOSED PROGRAM: If proposal is to deepen or plug back, give data on present productive zone and proposed new productive zone. If proposal is to drill or deepen directionally, give pertinent data on subsurface locations and measured and true vertical depths. Give blowout preventer program, if any.

24.

SIGNED

Cy Cowan

TITLE Regulatory Coordinator

DATE 10/14/82

(This space for Approval or Supervisory use)

(Orig. Sgd.) GEORGE H. STEWART

PERMIT NO.

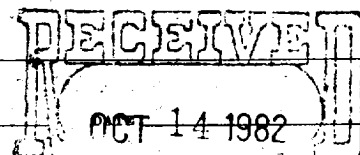
APPROVAL DATE

APPROVED BY

NOV 18 1982

TITLE

CONDITIONS OF APPROVAL, IF ANY:

JAMES A. GILLHAM
DISTRICT SUPERVISOROIL & GAS
U.S. GEOLOGICAL SURVEY
ROSWELL, NEW MEXICO

NEW MEXICO OIL CONSERVATION COMMISSION
WELL LOCATION AND ACREAGE DEDICATION PLAT

Form C-102
Supersedes C-128
Effective 1-1-65

All distances must be from the outer boundaries of the Section.

Operator YATES PETROLEUM CORPORATION			Lease Savage "NI" Federal		Well No. 3
Unit Letter B	Section 30	Township 6 South	Range 26 East	County Chaves	

Actual Footage Location of Well:

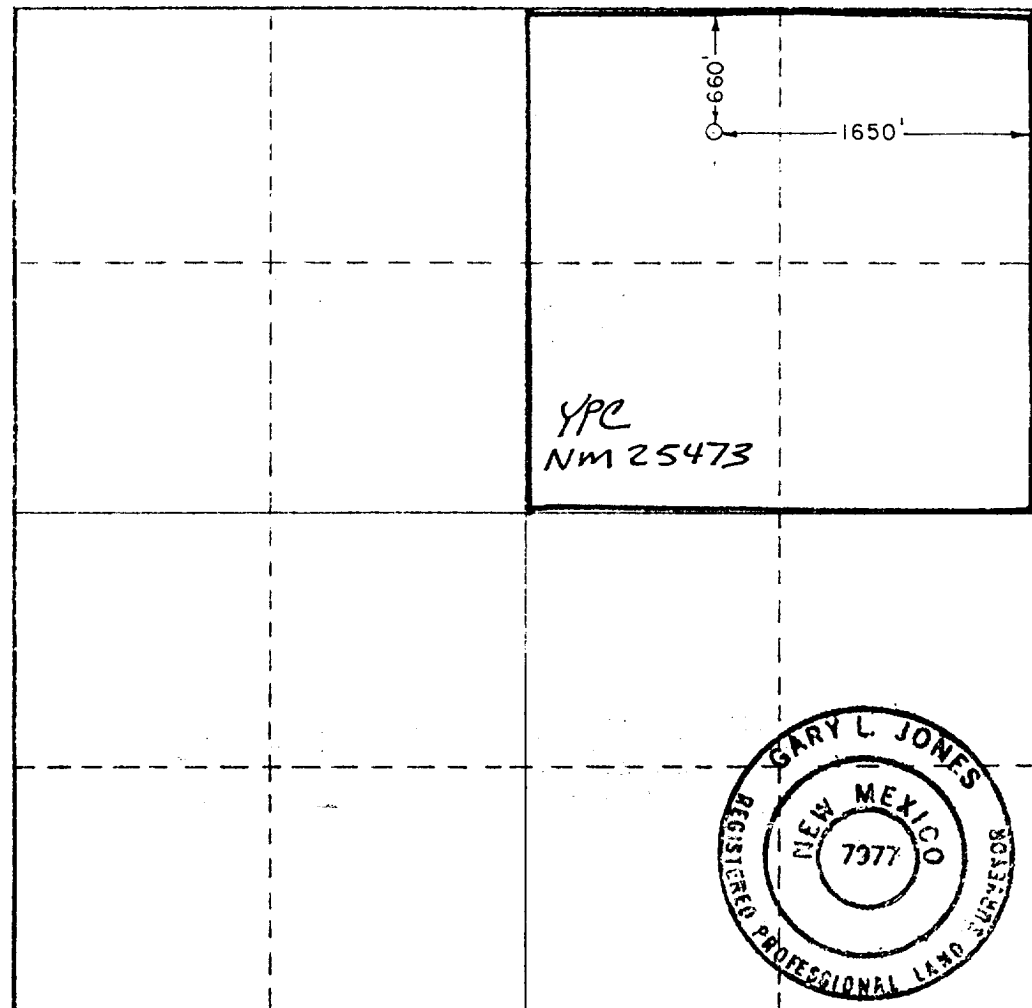
660	feet from the	North	line and	1650	feet from the	East	line
Ground Level Elev. 3694.2'	Producing Formation ABO		Pool PECOS Slope ABO	Dedicated Acreage: 160		Across	

1. Outline the acreage dedicated to the subject well by colored pencil or hatchure marks on the plat below
2. If more than one lease is dedicated to the well, outline each and identify the ownership thereof (both as to working interest and royalty).
3. If more than one lease of different ownership is dedicated to the well, have the interests of all owners been consolidated by communitization, unitization, force-pooling, etc?

☐ Yes ☒ No If answer is "yes," type of consolidation _____

If answer is "no," list the owners and tract descriptions which have actually been consolidated. (Use reverse side of this form if necessary.) _____

No allowable will be assigned to the well until all interests have been consolidated (by communitization, unitization, forced-pooling, or otherwise) or until a non-standard unit, eliminating such interests, has been approved by the Commission.



CERTIFICATION

I hereby certify that the information contained herein is true and complete to the best of my knowledge and belief.

Cy Cowan
Name

Cy Cowan

Position

Regulatory Coordinator

Company

Yates Petroleum Corp.

Date

10/14/82

I hereby certify that the well location shown on this plat was plotted from field notes of actual surveys made by me or under my supervision, and that the same is true and correct to the best of my knowledge and belief.

Date Surveyed

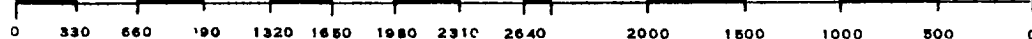
October 11, 1982

Registered Professional Engineer and/or Land Surveyor

Gary L. Jones

Certificate No.

7977



Savage "NI" Federal #3
660' FNL and 1650' FEL
Sec 30-T6S-R26E

In conjunction with Form 9-331C, Application for Permit to Drill subject well, Yates Petroleum Corporation submits the following ten items of pertinent information in accordance with USGS requirements.

1. The geologic surface formation is quaternary alluvium.

2. The estimated tops of geologic markers are as follows:

San Andres	534'
Glorieta	1631'
Fullerton	3047'
Abo	3679'
TD	4200'

3. The estimated depths at which anticipated water, oil or gas formations are expected to be encountered:

Water: approximately 1000'-2000'

Oil or Gas: Abo 3700'

4. Proposed Casing Program: See Form 9-331C.

5. Pressure Control Equipment: See Form 9-331C and Exhibit B.

6. Mud Program: See Form 9-331C.

7. Auxiliary Equipment: Kelly Cock; pit level indicators and flow sensor equipment;
sub with full-opening valve on floor, drill pipe connection.

8. Testing, Logging and Coring Program:

Samples: Surface casing to TD.

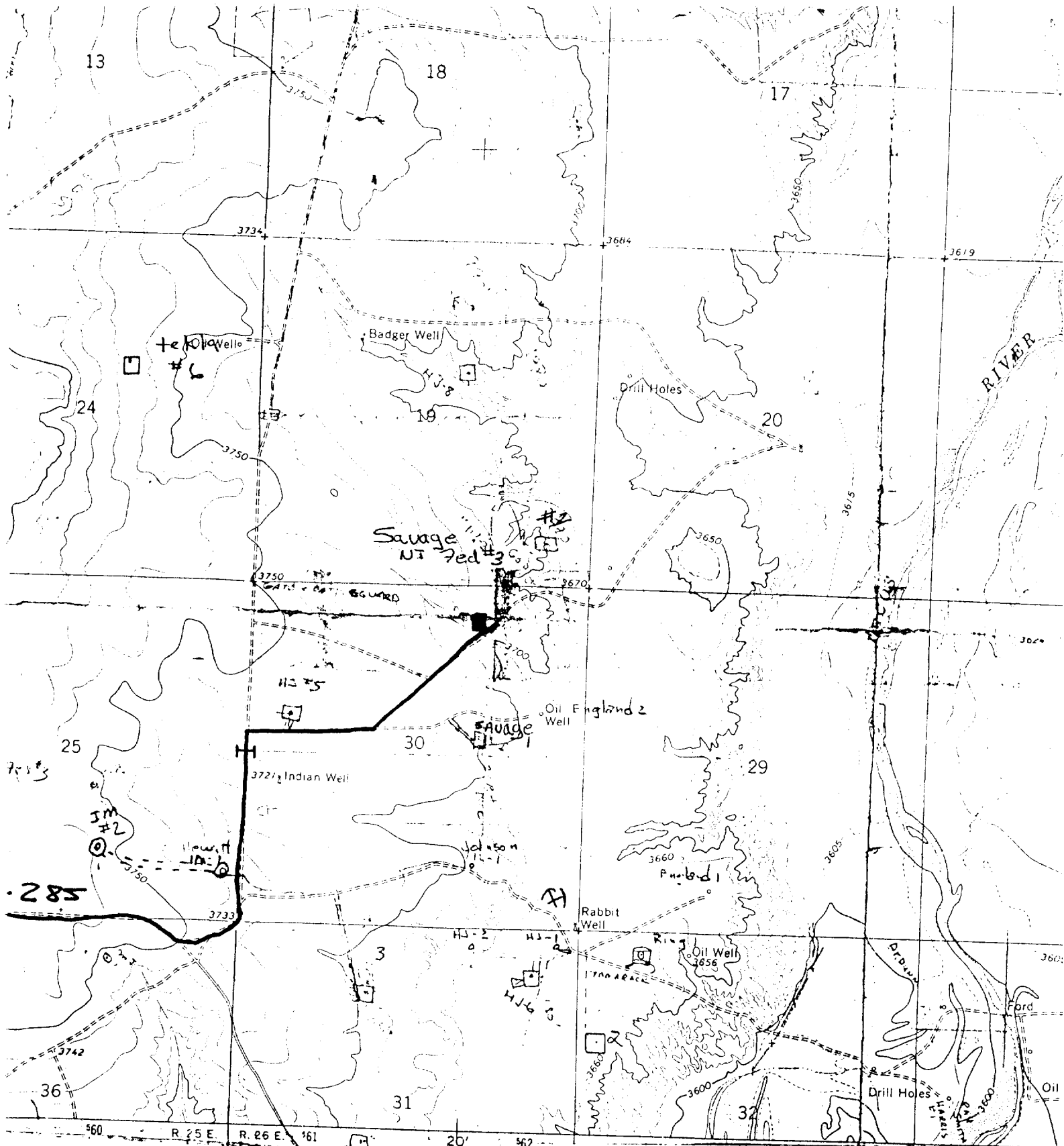
DST's: As warranted.

Coring: None.

Logging: CNL-FDC TD to csg w/GR-CNL onto surface & DLL from TD to csg.

9. No abnormal pressures or temperatures are anticipated.

10. Anticipated starting date: As soon as possible after approval.



Survey

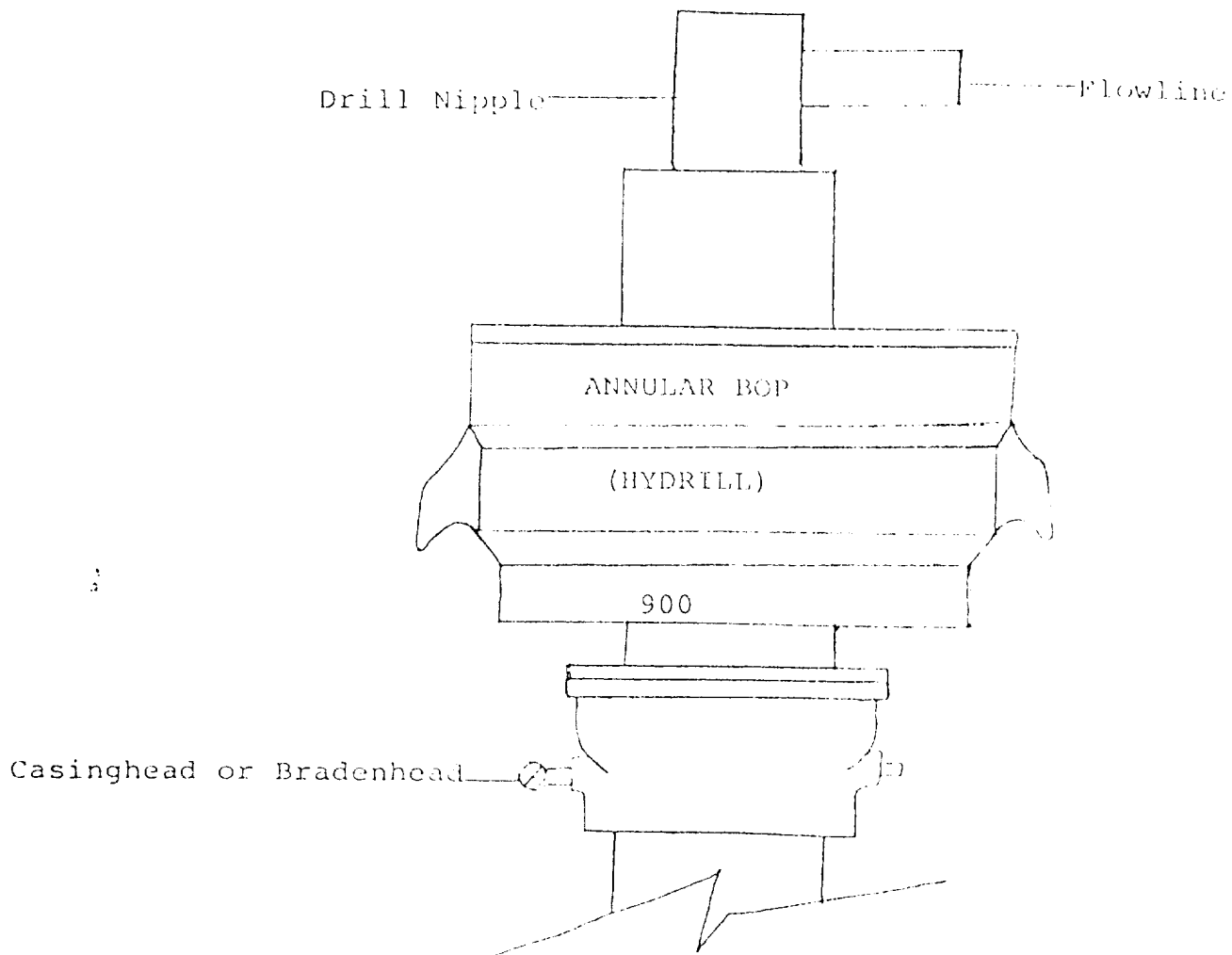
m.

UTM GRID AND 1967 MAGNETIC NORTH DECLINATION AT CENTER OF SHEET

Yates Petroleum Corp
 Savage 'NI' Fed #3
 660'FNL + 1650'FEL
 Sec 30 T 6S R 26E
 Chaves County
 NM
 Exhibit A

0 100 5000 6000

0 FEET
 10 FEET
 20 FEET
 30 FEET
 40 FEET
 50 FEET
 60 FEET
 70 FEET
 80 FEET
 90 FEET
 100 FEET
 110 FEET
 120 FEET
 130 FEET
 140 FEET
 150 FEET
 160 FEET
 170 FEET
 180 FEET
 190 FEET
 200 FEET
 210 FEET
 220 FEET
 230 FEET
 240 FEET
 250 FEET
 260 FEET
 270 FEET
 280 FEET
 290 FEET
 300 FEET
 310 FEET
 320 FEET
 330 FEET
 340 FEET
 350 FEET
 360 FEET
 370 FEET
 380 FEET
 390 FEET
 400 FEET
 410 FEET
 420 FEET
 430 FEET
 440 FEET
 450 FEET
 460 FEET
 470 FEET
 480 FEET
 490 FEET
 500 FEET
 510 FEET
 520 FEET
 530 FEET
 540 FEET
 550 FEET
 560 FEET
 570 FEET
 580 FEET
 590 FEET
 600 FEET
 610 FEET
 620 FEET
 630 FEET
 640 FEET
 650 FEET
 660 FEET
 670 FEET
 680 FEET
 690 FEET
 700 FEET
 710 FEET
 720 FEET
 730 FEET
 740 FEET
 750 FEET
 760 FEET
 770 FEET
 780 FEET
 790 FEET
 800 FEET
 810 FEET
 820 FEET
 830 FEET
 840 FEET
 850 FEET
 860 FEET
 870 FEET
 880 FEET
 890 FEET
 900 FEET
 910 FEET
 920 FEET
 930 FEET
 940 FEET
 950 FEET
 960 FEET
 970 FEET
 980 FEET
 990 FEET
 1000 FEET



THE FOLLOWING CONSTITUTE MINIMUM BLOWOUT PREVENTER REQUIREMENTS

1. All preventers to be hydraulically operated with secondary manual controls installed prior to drilling out from under casing.
2. All connections from operating manifolds to preventers to be all steel. Hole or tube a minimum of one inch in diameter.
3. The available closing pressure shall be at least 15% in excess of that required with sufficient volume to operate the BOP's.
4. All connections to and from preventer to have a pressure rating equivalent to that of the BOP's.
5. Hole must be kept filled on trips below intermediate casing.

1. 1. 1. 1. 1.

