

UNITED STATES **NM OIL CONS. COMMISSION**
DEPARTMENT OF THE INTERIOR **Driller DD**
GEOLOGICAL SURVEY **Artesia, NM 88210**

APPLICATION FOR PERMIT TO DRILL, DEEPEN, OR PLUG BACK

1a. TYPE OF WORK

DRILL ☒DEEPEN ☐RECEIVED BACK ☐

b. TYPE OF WELL

OIL
WELL ☒GAS
WELL ☐OTHER ☐SINGLE ☐MULTIPLE
ZONE ☐

2. NAME OF OPERATOR

STEVENS OPERATING CORPORATION ✓

3. ADDRESS OF OPERATOR

P. O. Box 2408, Roswell, New Mexico 88201 **O. C. D. ARTESIA OFFICE**

4. LOCATION OF WELL (Report location clearly and in accordance with any State requirements.)*

At surface 990 FNL 660 FWL, Sec. 17, T-7-S, R-27-E

At proposed prod. zone

Same

14. DISTANCE IN MILES AND DIRECTION FROM NEAREST TOWN OR POST OFFICE*

32.5 northeast of Roswell, New Mexico

15. DISTANCE FROM PROPOSED*

LOCATION TO NEAREST
PROPERTY OR LEASE LINE, FT.
(Also to nearest drg. unit line, if any)

16. NO. OF ACRES IN LEASE

640

18. DISTANCE FROM PROPOSED LOCATION*

TO NEAREST WELL, DRILLING, COMPLETED,
OR APPLIED FOR, ON THIS LEASE, FT.

19. PROPOSED DEPTH

2200

21. ELEVATIONS (Show whether DF, RT, GR, etc.)

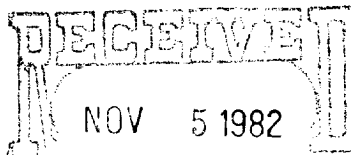
3934.0 GR

23. PROPOSED CASING AND CEMENTING PROGRAM

SIZE OF HOLE	SIZE OF CASING	WEIGHT PER FOOT	SETTING DEPTH	QUANTITY OF CEMENT
15"	10 3/4"	32.75	300'	500
10"	7 5/8"	23.00	2200'	500

Well will be drilled to a depth of approximately 2200' to evaluate the San Andres formation. If commercial production is indicated, well will be perforated and stimulated.

Attached are: 1. Well Location and Dedication Plat.
2. Supplemental Drilling Data.
3. Surface Use Plan

OIL & GAS
U.S. GEOLOGICAL SURVEY
ROSWELL, NEW MEXICO

IN ABOVE SPACE DESCRIBE PROPOSED PROGRAM: If proposal is to deepen or plug back, give data on present productive zone. If proposal is to drill or deepen directionally, give pertinent data on subsurface locations and measured and/or estimated depths. If proposal is to plug back, give data on present productive zone and any blowout preventer program, if any.

24.

SIGNED

TITLE

Production Coordinator

(This space for Federal or State office use)

PERMIT NO.

APPROVED

APPROVAL DATE

(ORIG. SGD.) DAVID R. GLASS

APPROVED BY

NOV 17 1982

TITLE

CONDITIONS OF APPROVAL, IF ANY:

JAMES A. GILLHAM
DISTRICT SUPERVISOR

*See Instructions On Reverse Side

5. LEASE DESIGNATION AND SERIAL NO.
NM 170428
6. INDIAN ALLOTTEE OR LEASE NAME
AGREEMENT NAME
OR LEASE NAME
7. COUNTY PARISH STATE
Chaves New Mexico
8. APPROX. DATE WORK WILL START*
November 1, 1982
9. QUANTITY OF CEMENT
500
10. QUANTITY OF CEMENT
500
11. QUANTITY OF CEMENT
500
12. QUANTITY OF CEMENT
500
13. QUANTITY OF CEMENT
500
14. QUANTITY OF CEMENT
500
15. QUANTITY OF CEMENT
500
16. QUANTITY OF CEMENT
500
17. QUANTITY OF CEMENT
500
18. QUANTITY OF CEMENT
500
19. QUANTITY OF CEMENT
500
20. QUANTITY OF CEMENT
500
21. QUANTITY OF CEMENT
500
22. QUANTITY OF CEMENT
500
23. QUANTITY OF CEMENT
500
24. QUANTITY OF CEMENT
500
25. QUANTITY OF CEMENT
500
26. QUANTITY OF CEMENT
500
27. QUANTITY OF CEMENT
500
28. QUANTITY OF CEMENT
500
29. QUANTITY OF CEMENT
500
30. QUANTITY OF CEMENT
500
31. QUANTITY OF CEMENT
500
32. QUANTITY OF CEMENT
500
33. QUANTITY OF CEMENT
500
34. QUANTITY OF CEMENT
500
35. QUANTITY OF CEMENT
500
36. QUANTITY OF CEMENT
500
37. QUANTITY OF CEMENT
500
38. QUANTITY OF CEMENT
500
39. QUANTITY OF CEMENT
500
40. QUANTITY OF CEMENT
500
41. QUANTITY OF CEMENT
500
42. QUANTITY OF CEMENT
500
43. QUANTITY OF CEMENT
500
44. QUANTITY OF CEMENT
500
45. QUANTITY OF CEMENT
500
46. QUANTITY OF CEMENT
500
47. QUANTITY OF CEMENT
500
48. QUANTITY OF CEMENT
500
49. QUANTITY OF CEMENT
500
50. QUANTITY OF CEMENT
500
51. QUANTITY OF CEMENT
500
52. QUANTITY OF CEMENT
500
53. QUANTITY OF CEMENT
500
54. QUANTITY OF CEMENT
500
55. QUANTITY OF CEMENT
500
56. QUANTITY OF CEMENT
500
57. QUANTITY OF CEMENT
500
58. QUANTITY OF CEMENT
500
59. QUANTITY OF CEMENT
500
60. QUANTITY OF CEMENT
500
61. QUANTITY OF CEMENT
500
62. QUANTITY OF CEMENT
500
63. QUANTITY OF CEMENT
500
64. QUANTITY OF CEMENT
500
65. QUANTITY OF CEMENT
500
66. QUANTITY OF CEMENT
500
67. QUANTITY OF CEMENT
500
68. QUANTITY OF CEMENT
500
69. QUANTITY OF CEMENT
500
70. QUANTITY OF CEMENT
500
71. QUANTITY OF CEMENT
500
72. QUANTITY OF CEMENT
500
73. QUANTITY OF CEMENT
500
74. QUANTITY OF CEMENT
500
75. QUANTITY OF CEMENT
500
76. QUANTITY OF CEMENT
500
77. QUANTITY OF CEMENT
500
78. QUANTITY OF CEMENT
500
79. QUANTITY OF CEMENT
500
80. QUANTITY OF CEMENT
500
81. QUANTITY OF CEMENT
500
82. QUANTITY OF CEMENT
500
83. QUANTITY OF CEMENT
500
84. QUANTITY OF CEMENT
500
85. QUANTITY OF CEMENT
500
86. QUANTITY OF CEMENT
500
87. QUANTITY OF CEMENT
500
88. QUANTITY OF CEMENT
500
89. QUANTITY OF CEMENT
500
90. QUANTITY OF CEMENT
500
91. QUANTITY OF CEMENT
500
92. QUANTITY OF CEMENT
500
93. QUANTITY OF CEMENT
500
94. QUANTITY OF CEMENT
500
95. QUANTITY OF CEMENT
500
96. QUANTITY OF CEMENT
500
97. QUANTITY OF CEMENT
500
98. QUANTITY OF CEMENT
500
99. QUANTITY OF CEMENT
500
100. QUANTITY OF CEMENT
500

N. MEXICO OIL CONSERVATION COMMISS. 4
WELL LOCATION AND ACREAGE DEDICATION PLAT

Form C-102
Supersedes C-128
Effective 1-1-65

All distances must be from the outer boundaries of the Section

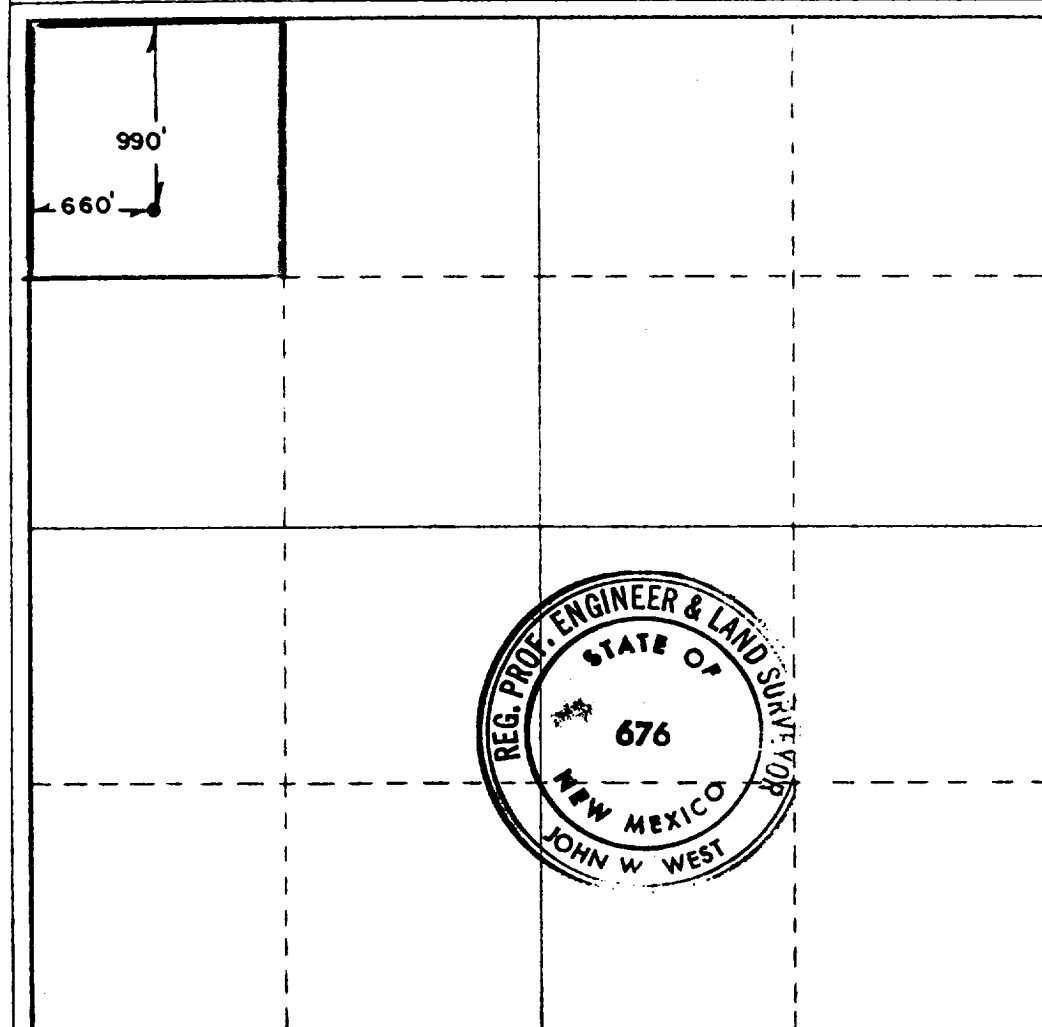
Operator Stevens Operating Co.			Lease R U A FEDERAL Sand Creek Federal		Well No. #1 - 2
Unit Letter D	Section 17	Township 7 South	Range 27 East	County CHAVES	
Actual Footage Location of Well: 990 feet from the North line and 660 feet from the West line					
Ground Level Elev. 3934.0	Producing Formation San Andres		Pool Wildcat	Dedicated Acreage: 40 Acres	

1. Outline the acreage dedicated to the subject well by colored pencil or hatchure marks on the plat below.
2. If more than one lease is dedicated to the well, outline each and identify the ownership thereof (both as to working interest and royalty).
3. If more than one lease of different ownership is dedicated to the well, have the interests of all owners been consolidated by communitization, unitization, force-pooling, etc?

☐ Yes ☐ No If answer is "yes," type of consolidation _____

If answer is "no," list the owners and tract descriptions which have actually been consolidated (Use reverse side of this form if necessary.) _____

No allowable will be assigned to the well until all interests have been consolidated (by communitization, unitization, forced-pooling, or otherwise) or until a non-standard unit, eliminating such interests, has been approved by the Commission.



CERTIFICATION

I hereby certify that the information contained herein is true and complete to the best of my knowledge and belief.

Name

Pat Thompson

Position

Production Coordinator

Company

STEVENS OPERATING CORPORATION

Date

November 4, 1982

I hereby certify that the well location shown on this plat was plotted from field notes of actual surveys made by me or under my supervision, and that the same is true and correct to the best of my knowledge and belief.

Date Surveyed

7/16/82

Registered Professional Engineer and/or Land Surveyor

Certificate No. **JOHN W. WEST 676**
PATRICK A. ROMERO 6468
Ronald J. Eidson 3239

0 330 660 990 1320 1650 1980 2310 2640 2970 3300 3630 3960 4290 4620 4950 5280 5610 5940 6270 6600

SUPPLEMENTAL DRILLING DATA

STEVENS OPERATING CORPORATION
WELL #2 RUA FEDERAL
990' FNL 660' FWL, Sec. 17 T-7-S R-27-E
Chaves County, New Mexico

1. SURFACE FORMATION: Aluvium.

2. ESTIMATED TOPS OF GEOLOGIC MARKERS:

San Andres	1300'	P ₁	1735'
------------	-------	----------------	-------

3. ANTICIPATED POROSITY ZONES:

Water	250'
Oil	1735'

4. CASING DESIGN:

<u>Size</u>	<u>Interval</u>	<u>Weight</u>	<u>Grade</u>	<u>Joint</u>	<u>Condition</u>
10 3/4"	0 - 300'	54.50#	J-55	STC	New
7 5/8"	0 - 2000'	24.00#	J-55	STC	New

5. SURFACE CONTROL EQUIPMENT: Cable Tool

6. CIRCULATING MEDIUM: Cable Tool

7. AUXILIARY EQUIPMENT: Cable Tool

8. TESTING, LOGGING AND CORING PROGRAMS:

Logging: A cased hole Gamma Ray Neutron log may be run if warranted.

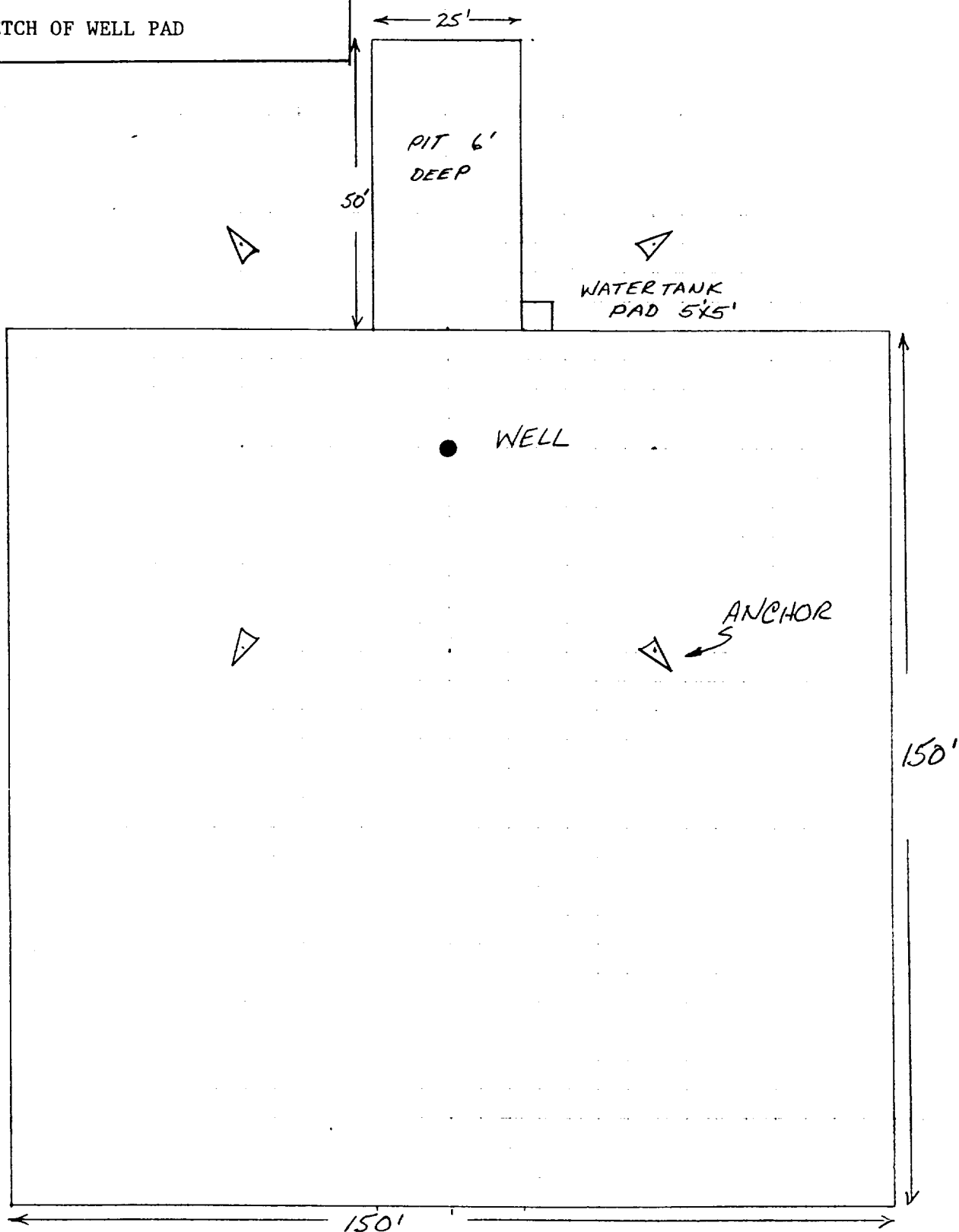
9. ABNORMAL PRESSURES, TEMPERATURES OR GASES: None anticipated.

10. ANTICIPATED DATES: It is planned that drilling operations will commence about November 15, 1982. Duration of drilling and completion operations should be 20 to 60 days.

STEVENS OPERATING CORPORATION
WELL #2 RUA FEDERAL
990' FNL 660' FWL, SEC. 17 T-7-S R-27-E
CHAVES COUNTY, NEW MEXICO

EXHIBIT "D"

SKETCH OF WELL PAD



UNITED STATES
DEPARTMENT OF THE INTERIOR
GEOLOGICAL SURVEY

SUNDRY NOTICES AND REPORTS ON WELLS

(Do not use this form for proposals to drill or to deepen or to change the location of a different reservoir. Use Form 9-331-C for such proposals.)

1. oil ☒ gas ☐ other ☐

2. NAME OF OPERATOR

Stevens Operating Corporation O. C. D.

3. ADDRESS OF OPERATOR

P. O. Box 2408, Roswell, NM 88201

4. LOCATION OF WELL (REPORT LOCATION CLEARLY. See space 17 below.)

AT SURFACE: 990 FNL, 660 FWL, Sec. 17, T-7-S, R-27-E

AT TOP PROD. INTERVAL: Same

AT TOTAL DEPTH: Same

16. CHECK APPROPRIATE BOX TO INDICATE NATURE OF NOTICE, REPORT, OR OTHER DATA

REQUEST FOR APPROVAL TO:

SUBSEQUENT REPORT OF:

TEST WATER SHUT-OFF ☐

FRACTURE TREAT ☐

SHOOT OR ACIDIZE ☐

REPAIR WELL ☐

PULL OR ALTER CASING ☐

MULTIPLE COMPLETE ☐

CHANGE ZONES ☐

ABANDON* ☐

(other) ☐

Name change, location of access road, hole size

LEASE
NM 17042

6. IF INDIAN, ALLOTTEE OR TRIBE NAME

7. UNIT AGREEMENT NAME

8. FARM OR LEASE NAME
Rua Federal

9. WELL NO.
2

10. FIELD OR WILDCAT NAME
Wildcat San Andres

11. SEC., T., R., M., OR BLK. AND SURVEY OR AREA
Sec. 17, T-7-S, R-27-E

12. COUNTY OR PARISH
Chaves

13. STATE
NM

14. API NO.

15. ELEVATIONS (SHOW DF, KDB, AND WD)
3934' GR

RECEIVED
(NOTE: Report results of multiple completion or zone change on Form 9-331-C)
NOV 17 1982

OIL & GAS
U.S. GEOLOGICAL SURVEY
ROSWELL, NEW MEXICO

17. DESCRIBE PROPOSED OR COMPLETED OPERATIONS (Clearly state all pertinent details, and give pertinent dates, including estimated date of starting any proposed work. If well is directionally drilled, give subsurface locations and measured and true vertical depths for all markers and zones pertinent to this work.)*

Please be advised that the above named well has been changed to the Sand Creek Federal #1.

The location of the access road has been changed per attached map.

The hole size will be changed to 15" instead of 12 1/4".

Subsurface Safety Valve: Manu. and Type _____ Set @ _____ Ft.

18. I hereby certify that the foregoing is true and correct

SIGNED David R. Glass TITLE Production Coord. DATE 11-17-82

APPROVED
(ORIG. SGD.) DAVID R. GLASS
(This space for Federal or State office use)

APPROVED BY _____ TITLE _____ DATE _____
CONDITIONS OF APPROVAL IF ANY

NOV 17 1982

JAMES A. GILLHAM
DISTRICT SUPERVISOR *See Instructions on Reverse Side

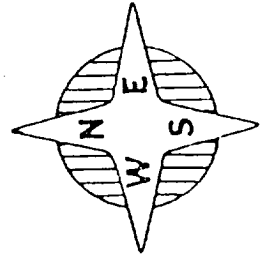
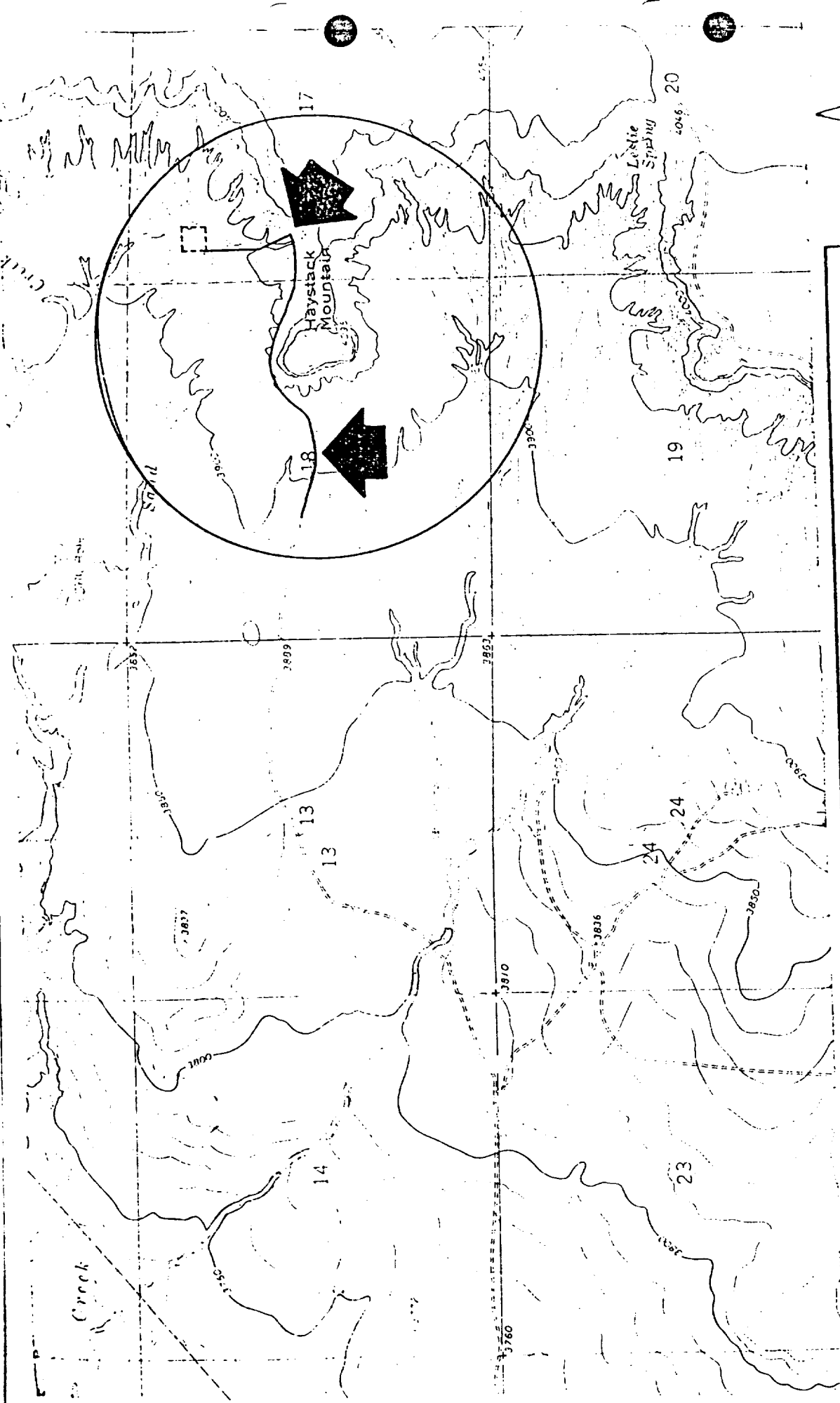
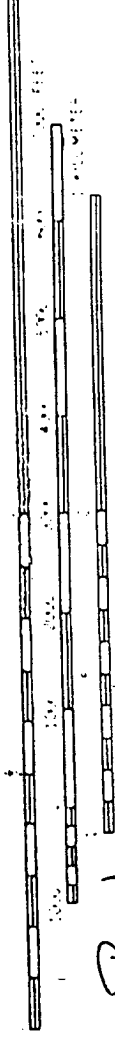


Figure 1: Location of Sand Creek #1 Access Road; Sections 18 & 19, T07S R27E, Chaves County, NM

Maps: USGS Haystack Mountain
 Quadrangle (1967)
 USGS Eightmile Draw
 Quadrangle (1962)

SCALE 1:24,000



7.5 MINUTE SERIES
 Revised Access Road - 11/12/82