

UNITED STATES  
DEPARTMENT OF THE INTERIOR  
GEOLOGICAL SURVEY

30 005-61850

## APPLICATION FOR PERMIT TO DRILL, DEEPEN, OR PLUG BACK

## 1a. TYPE OF WORK

DRILL ☒DEEPEN ☐PLUG BACK ☐

## b. TYPE OF WELL

OIL  
WELL ☐GAS  
WELL ☒

OTHER

SINGLE  
ZONE ☒MULTIPLE  
ZONE ☐

## 2. NAME OF OPERATOR

TRANSWESTERN GAS SUPPLY COMPANY ✓

NOV 19 1982

## 3. ADDRESS OF OPERATOR

P.O. Box 2521, Houston, Texas 77001

O. C. D.

## 4. LOCATION OF WELL (Report location clearly and in accordance with any State requirements\*)

At surface

1980' FNL 660' FEL

Sec. 7-6S-23E

At proposed prod. zone

Same

## 14. DISTANCE IN MILES AND DIRECTION FROM NEAREST TOWN OR POST OFFICE\*

27 Miles north-northwest of Roswell, New Mexico

## 15. DISTANCE FROM PROPOSED\*

LOCATION TO NEAREST  
PROPERTY OR LEASE LINE, FT.  
(Also to nearest drilg. unit line, if any)

660'

## 16. NO. OF ACRES IN LEASE

890.38

17. NO. OF ACRES ASSIGNED  
TO THIS WELL

160

## 18. DISTANCE FROM PROPOSED LOCATION\*

TO NEAREST WELL, DRILLING, COMPLETED,  
OR APPLIED FOR, ON THIS LEASE, FT.

None

## 19. PROPOSED DEPTH

3800'

## 20. ROTARY OR CABLE TOOLS

Rotary

## 21. ELEVATIONS (Show whether DF, RT, GR, etc.)

4186.72 GL

## 22. APPROX. DATE WORK WILL START\*

November 20, 1982

## 23.

## PROPOSED CASING AND CEMENTING PROGRAM

SIZE OF HOLE	SIZE OF CASING	WEIGHT PER FOOT	SETTING DEPTH	QUANTITY OF CEMENT
17-1/2"	13-3/8"	48.0# K-55	60'	Grout to Surface with Redimix
11"	7-5/8"	26.4# K-55	1500'	450 sx Circulated
6-3/4"	4-1/2"	10.5# J-55	3800'	300 sx Cemented back to 2200'±

Propose to drill to approximately 3800' to test Abo and intermediate formations. Will be drilled with rotary tools using mud as the circulating medium. Complete in favorable zones by perforating and treating the formations.

Double-ram 3000# WP BOP will be installed on the 7-5/8" casing and tested daily during drilling operations.

See attached "Supplemental Drilling Data".

Gas is dedicated to TRANSWESTERN PIPELINE COMPANY.

IN ABOVE SPACE DESCRIBE PROPOSED PROGRAM: If proposal is to deepen or plug back, give data on present productive zone and proposed new productive zone. If proposal is to drill or deepen directionally, give pertinent data on subsurface locations and measured and true vertical depths. Give blowout preventer program, if any.

## 24.

SIGNED

JERRY W. LONG

TITLE Agent

DATE November 4, 1982

(This space for Federal or State office use)

PERMIT NO.

APPROVED

APPROVAL DATE

(ORIG. SGD.) DAVID R. GLASS

APPROVED BY

TITLE

DATE

CONDITIONS OF APPROVAL

NOV 17 1982

For JAMES A. GILLHAM  
DISTRICT SUPERVISOR

\*See Instructions On Reverse Side

All distances must be from the outer boundaries of the Section.

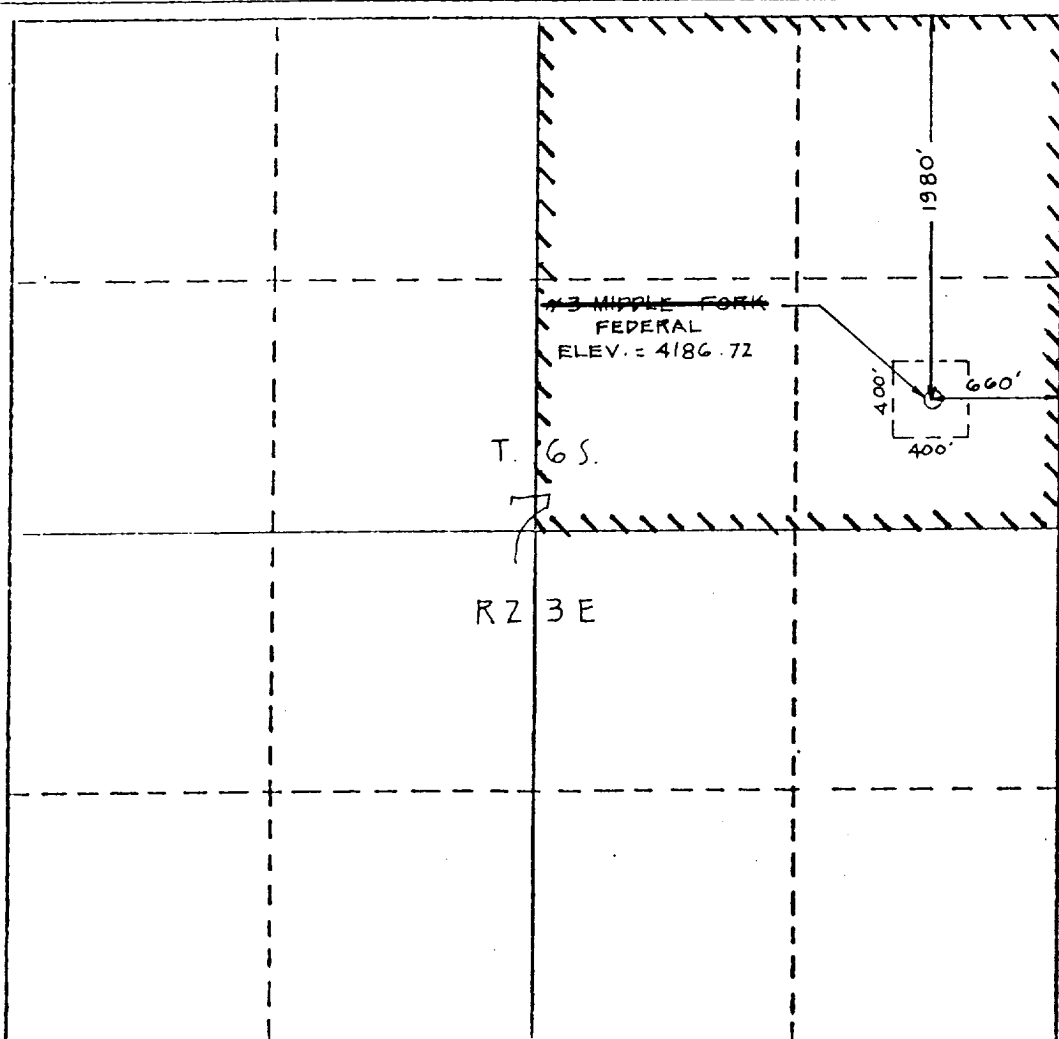
Operator <b>Transwestern Gas Supply Company</b>			Lease <b>Miller Federal</b> <del>XXXXXX XXXX XXXXXX</del>		Well No. <b>X 1</b>
Unit Letter <b>H</b>	Section <b>7</b>	Township <b>6 South</b>	Range <b>23 East</b>	County <b>Chaves</b>	
Actual Postage Location of Well: <b>1980</b> feet from the <b>north</b> line and <b>660</b> feet from the <b>east</b> line Ground Level Elev. <b>4186.72</b> Producing Formation <b>Abo</b> Pool <b>Undesignated Abo</b> Dedicated Acreage: <b>160</b> Acres					

1. Outline the acreage dedicated to the subject well by colored pencil or hatchure marks on the plat below.
2. If more than one lease is dedicated to the well, outline each and identify the ownership thereof (both as to working interest and royalty). **SINGLE LEASE**
3. If more than one lease of different ownership is dedicated to the well, have the interests of all owners been consolidated by communitization, unitization, force-pooling, etc?

☐ Yes ☐ No If answer is "yes," type of consolidation \_\_\_\_\_

If answer is "no," list the owners and tract descriptions which have actually been consolidated. (Use reverse side of this form if necessary.) \_\_\_\_\_

No allowable will be assigned to the well until all interests have been consolidated (by communitization, unitization, forced-pooling, or otherwise) or until a non-standard unit, eliminating such interests, has been approved by the Division.



# CERTIFICATION

I hereby certify that the information contained herein is true and complete to the best of my knowledge and belief.

*Jerry W. Long*  
Name  
**JERRY W. LONG**

Position  
**Agent**

Company  
**TRANSWESTERN GAS SUPPLY COMPANY**

Date  
**November 4, 1982**

I hereby certify that the well location shown on this plat was plotted from field notes of actual surveys made by me or under my supervision, and that the same is true and correct to the best of my knowledge and belief.

**October 8, 1982**

Date Surveyed  
Registered Professional  
and/or Land Surveyor

*Richard B. Wright*  
Certificate No. **7929**

## SUPPLEMENTAL DRILLING DATA

TRANSWESTERN GAS SUPPLY COMPANY  
No.1 Miller Federal  
1980'FNL 660'FEL Sec.7-6S-23E  
Chaves County, N.M.

NM 32322

The following items supplement Form 9-331C in accordance with instructions contained in NTL-6.

1. SURFACE FORMATION: Permian Seven Rivers

2. ESTIMATED TOPS OF GEOLOGIC MARKERS:

Seven Rivers	Surface
San Andres	140'
Glorieta	960'
Tubb	2330'
Abo	2960'

3. ESTIMATED DEPTHS TO WATER, OIL OR GAS FORMATION:

Water	-	Surface to 600'
Gas	-	2960' to 3800'

4. PROPOSED CASING PROGRAM: See Form 9-331C

5. PRESSURE CONTROL EQUIPMENT: Blowout preventer stack will consist of a double-ram blowout preventer rated to 3000# WP. A sketch of the BOP is attached.

6. CIRCULATING MEDIUM: Hole for 13-3/8" conductor pipe will be drilled with a rat hole auger. Mud will be used as the circulating medium for the remainder of the drilling. Appropriate additives will be used in the mud system.

7. AUXILIARY EQUIPMENT: Full-opening kelly cock, to fit the drill string in use, will be kept on the rig floor at all times.

8. TESTING, LOGGING AND CORING PROGRAM:

Samples:	Surface casing shoe to TD
DST:	None anticipated
Logging:	Gamma Ray-Neutron log and other logs as recommended by well-site geologist.
Coring:	None anticipated

TRANSWESTERN GAS SUPPLY COMPANY  
No.1 Miller Federal  
1980'FNL 660'FEL Sec.7-6S-23E  
Chaves County, N.M.

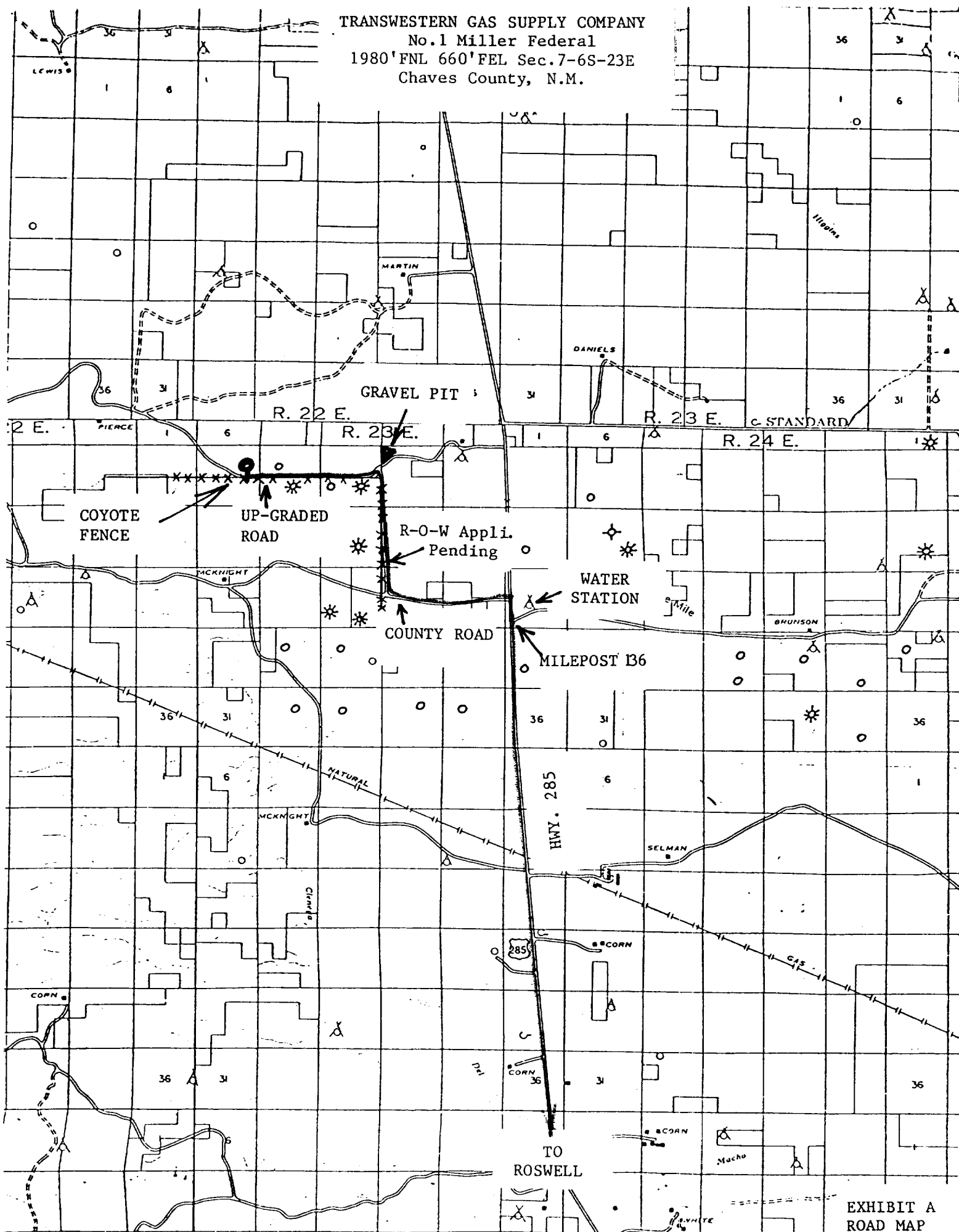
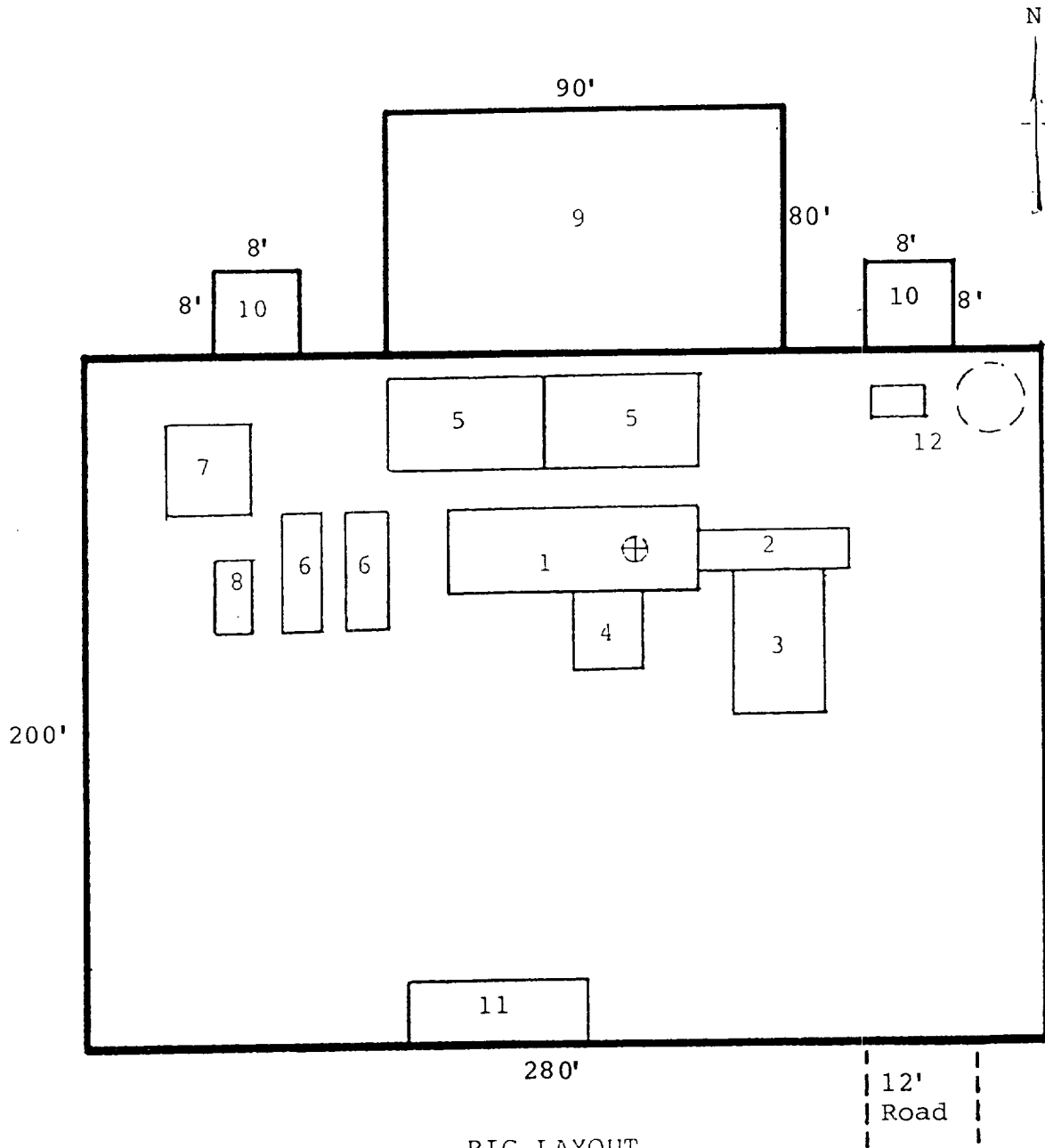


EXHIBIT A  
ROAD MAP

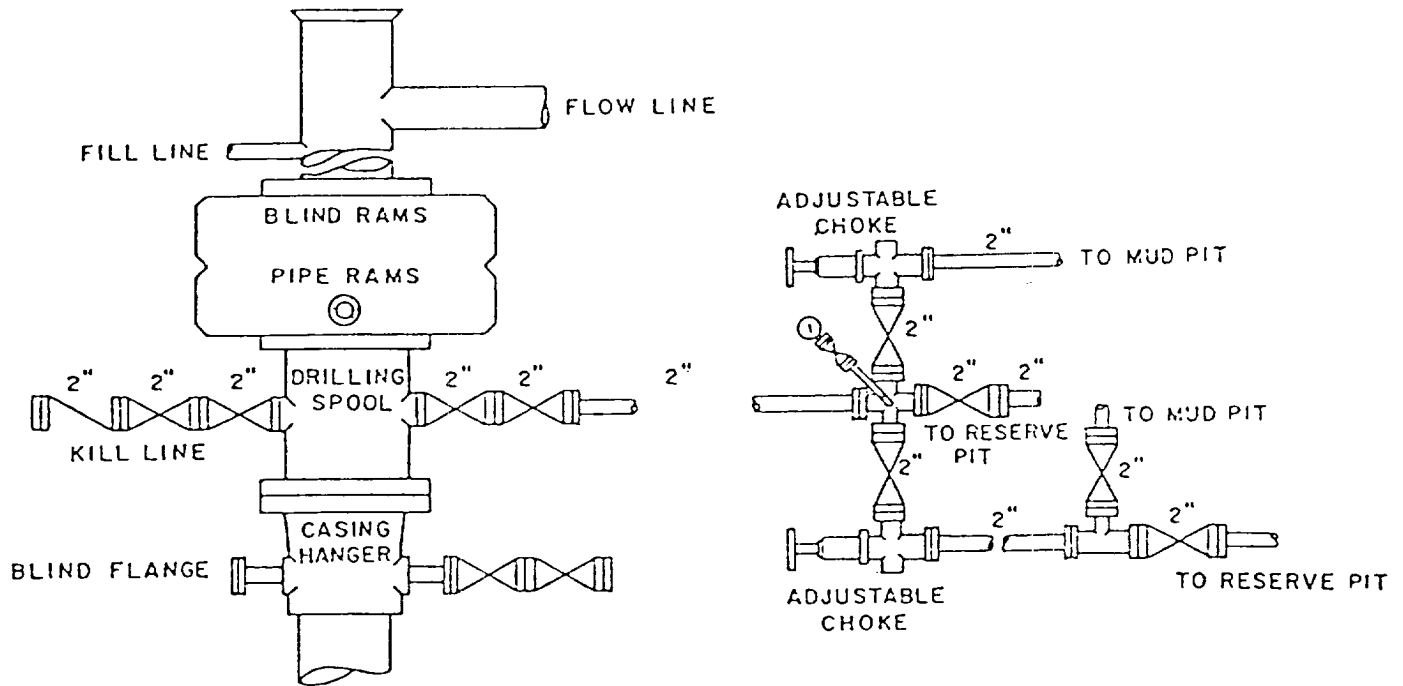
TRANSWESTERN GAS SUPPLY COMPANY  
 No.1 Miller Federal  
 1980'FNL 660'FEL Sec.7-6S-23E  
 Chaves County, N.M.



RIG LAYOUT

- |                 |                           |
|-----------------|---------------------------|
| 1. Substructure | 7. Water Tank             |
| 2. Catwalk      | 8. Light Plant            |
| 3. Pipe Rack    | 9. Reserve Pit            |
| 4. Doghouse     | 10. Trash Pit             |
| 5. Mud Pits     | 11. Trailer House         |
| 6. Mud Pumps    | 12. Production Facilities |

TRANSWESTERN GAS SUPPLY COMPANY  
No.1 Miller Federal  
1980'FNL 660'FEL Sec.7-6S-23E  
Chaves County, N.M.



BOP DIAGRAM

3000# WP Double-Ram  
Operated Daily