

UNITED STATES
DEPARTMENT OF THE INTERIOR
BUREAU OF LAND MANAGEMENT
Artesia, NM 88210

SUBMIT IN TRIF
(Other instruction
verse side)

Form approved.
Budget Bureau No. 1004-011
Expires August 31, 1985

5. LEASE DESIGNATION AND SERIAL

Fed NM 2351

6. IF INDIAN, ALLOTTEE OR TRIBE NAME

7. UNIT AGREEMENT NAME

8. FARM OR LEASE NAME

Federal "HY"

9. WELL NO.

#6

10. FIELD AND POOL OR WILDCAT

Pecos Slope Abo

11. SEC., T., R., M., OR BLE. AND
SURVEY OR AREA

28-7S-25E

12. COUNTY OR PARISH 13. STATE

Chaves

NM

OIL WELL ☐ GAS WELL ☒ OTHER

2. NAME OF OPERATOR

Yates Petroleum Corporation

3. ADDRESS OF OPERATOR

105 South 4th Street, Artesia, NM 88210

4. LOCATION OF WELL (Report location clearly and in accordance with any State requirements.*

See also space 17 below.)
At surface

660N + 660E

RECEIVED

FEB 29 '88

14. PERMIT NO.

API #30-005-61853

15. ELEVATIONS (Show whether DF, RT, GR, etc.)

3709' GR

ARTESIA, OFFICE

16

Check Appropriate Box To Indicate Nature of Notice, Report, or Other Data

NOTICE OF INTENTION TO:

TEST WATER SHUT-OFF

FRACTURE TREAT

SHOOT OR ACIDIZE

REPAIR WELL

(Other) Off-Lease Measurement

PULL OR ALTER CASING

MULTIPLE COMPLETE

ABANDON*

CHANGE PLANE

X

SUBSEQUENT REPORT OF:

WATER SHUT-OFF

FRACTURE TREATMENT

SHOOTING OR ACIDIZING

(Other)

REPAIRING WELL

ALTERING CASING

ABANDONMENT*

(NOTE: Report results of multiple completion on Well
Completion or Recompletion Report and Log form.)

17. DESCRIBE PROPOSED OR COMPLETED OPERATIONS (Include all pertinent details, and give pertinent dates, including estimated date of starting any proposed work. If well is directionally drilled, give subsurface locations and measured and true vertical depths for all markers and zones pertinent to this work.)*

This request seeks approval for off-lease measurement of natural gas from the subject well. Transwestern Pipeline Company agreed to transport gas from this well if Yates would build a gathering line to deliver the gas to existing Transwestern pipeline facilities. The gas sales meter will be read and maintained by Transwestern, but the meter is located nearby off-lease (see attached map). Yates will maintain the gathering flow lines in a safe condition and will pay royalty due on gas lost to leaks or failures based on the preceeding 30-day average rate. Yates will obtain all necessary rights-of-way before installing flow lines. All separation and liquid storage and sales facilities will be located on the originating lease. Yates believes that off-lease measurement is necessary for this well as the only practical way to bring this gas to market with attendant economic benefit to working interest owners, royalty owners and the public through production taxes.

18. I hereby certify that the foregoing is true and correct

SIGNED

Dave Boue

TITLE

Engineering Manager

DATE

February 19, 1988

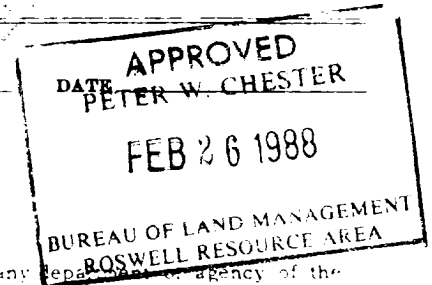
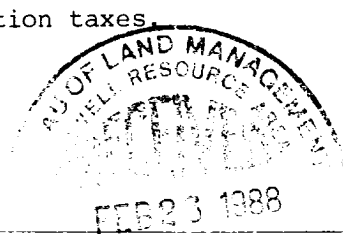
(This space for Federal or State office use)

APPROVED BY

TITLE

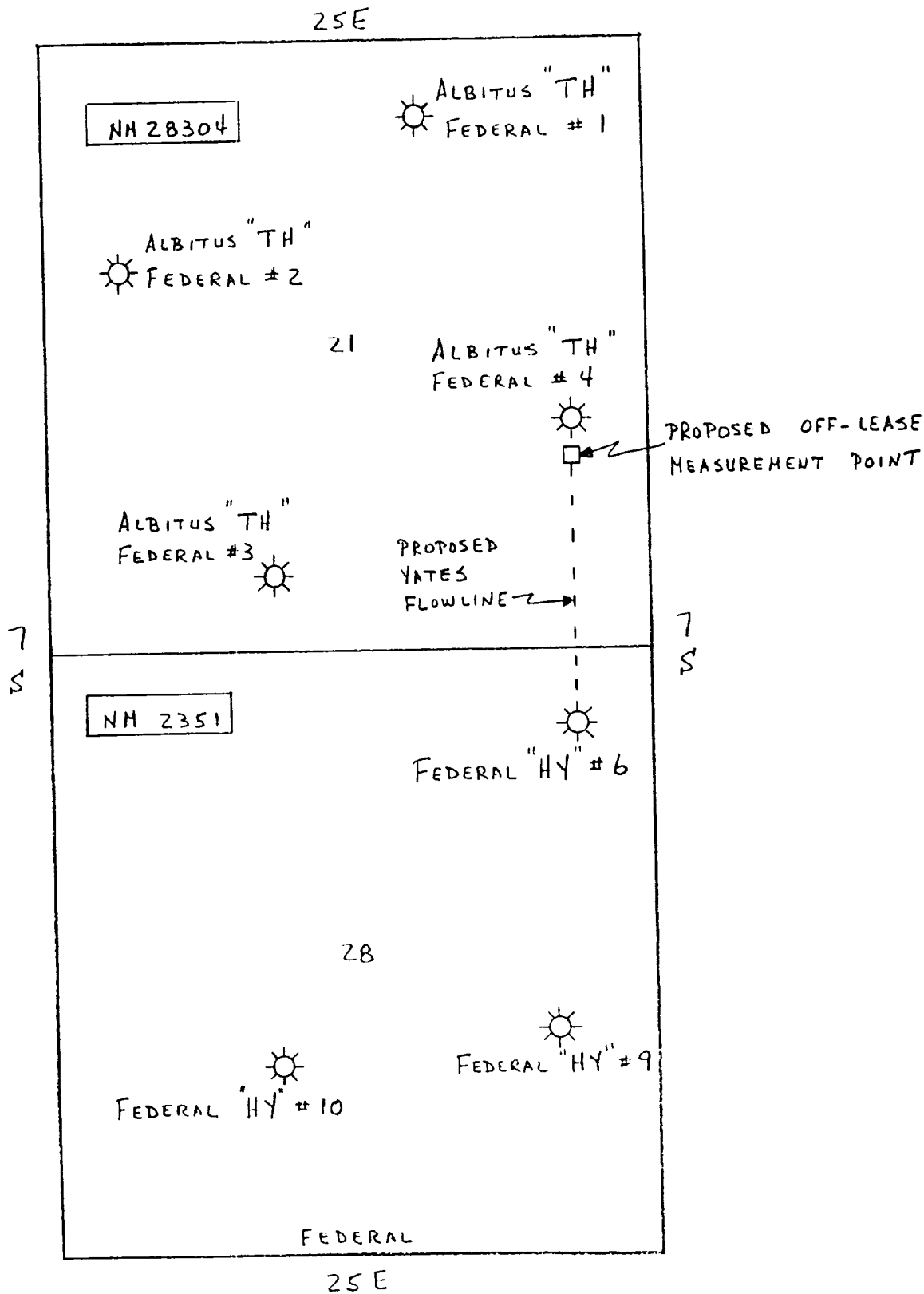
CONDITIONS OF APPROVAL, IF ANY:

*See Instructions on Reverse Side



FEDERAL "HY" # 6

OFF - LEASE MEASUREMENT



SCHEMATIC DIAGRAM OF OFF-LEASE GAS MEASUREMENT

