

UNITED STATES
DEPARTMENT OF THE INTERIOR
GEOLOGICAL SURVEY

(Other Instructions on
Reverse)

Form Approved
Budget Bureau No. 42-14437-1

30-085-61859

APPLICATION FOR PERMIT TO DRILL, DEEPEN, OR PLUG BACK

1a. TYPE OF WORK
DRILL ☒ DEEPEN ☐ PLUG BACK ☐

b. TYPE OF WELL
OIL WELL ☐ GAS WELL ☒ OTHER ☐ SINGLE ZONE ☐ MULTIPLE ZONE ☐

2. NAME OF OPERATOR
Yates Petroleum Corporation

3. ADDRESS OF OPERATOR
207 S. 4th, Artesia, New Mexico 88210

4. LOCATION OF WELL (Report location clearly and in accordance with any State requirements.)
At surface 660' FSL and 660' FWL

At proposed prod. zone same

14. DISTANCE IN MILES AND DIRECTION FROM NEAREST TOWN OR POST OFFICE*
38 miles NNE of Roswell, New Mexico

15. DISTANCE FROM PROPOSED LOCATION*
TO NEAREST WELL, DRILLING, COMPLETED,
OR APPLIED FOR, ON THIS LEASE, FT.
660'

16. NO. OF ACRES IN LEASE
1239.42

17. NO. OF ACRES ASSIGNED
TO THIS WELL
160

18. PROPOSED DEPTH
4050'

19. ROTARY OR CABLE TOOLS
Rotary

20. APPROX. DATE WORK WILL START*
ASAP

21. PROPOSED CASING AND CEMENTING PROGRAM

22. APPROX. DATE WORK WILL START*
ASAP

23. PROPOSED CASING AND CEMENTING PROGRAM

24. PROPOSED CASING AND CEMENTING PROGRAM

25. PROPOSED CASING AND CEMENTING PROGRAM

26. PROPOSED CASING AND CEMENTING PROGRAM

27. PROPOSED CASING AND CEMENTING PROGRAM

28. PROPOSED CASING AND CEMENTING PROGRAM

29. PROPOSED CASING AND CEMENTING PROGRAM

30. PROPOSED CASING AND CEMENTING PROGRAM

31. PROPOSED CASING AND CEMENTING PROGRAM

32. PROPOSED CASING AND CEMENTING PROGRAM

33. PROPOSED CASING AND CEMENTING PROGRAM

34. PROPOSED CASING AND CEMENTING PROGRAM

35. PROPOSED CASING AND CEMENTING PROGRAM

36. PROPOSED CASING AND CEMENTING PROGRAM

37. PROPOSED CASING AND CEMENTING PROGRAM

38. PROPOSED CASING AND CEMENTING PROGRAM

39. PROPOSED CASING AND CEMENTING PROGRAM

40. PROPOSED CASING AND CEMENTING PROGRAM

IN ABOVE SPACE DESCRIBE PROPOSED PROGRAM: If proposal is to deepen or plug back, give data on present productive zone and proposed new productive zone. If proposal is to drill or deepen directionally, give pertinent data on subsurface locations and measured and true vertical depths. Give blowout preventer program, if any.

24. SIGNED *[Signature]* TITLE Regulatory Coordinator DATE 4/15/82

(This space for Federal or State official use)

PERMIT NO. *[Signature]* APPROVAL DATE

APPROVED BY FOR MAY 3 1982

CONDITIONS OF APPROVAL, IF ANY:

JAMES A. GILLHAM DISTRICT SUPERVISOR

DATE

DATE

We propose to drill and test the Abo and intermediate formations. Approximately 850' of surface casing will be set and cement circulated to shut off gravel and caving. If needed (lost circulation) 8 5/8" intermediate casing will be run to 1500' and cement circulated to tie back into the surface casing. If commercial, production casing will be run and cemented with adequate cover, perforated and stimulated as needed.

MUD PROGRAM: FW gel and LCM to 850', Brine to 3200', Brine & KCL water to T

BOP PROGRAM: BOP's will be installed at the offset and tested daily.

GAS NOT DEDICATED.

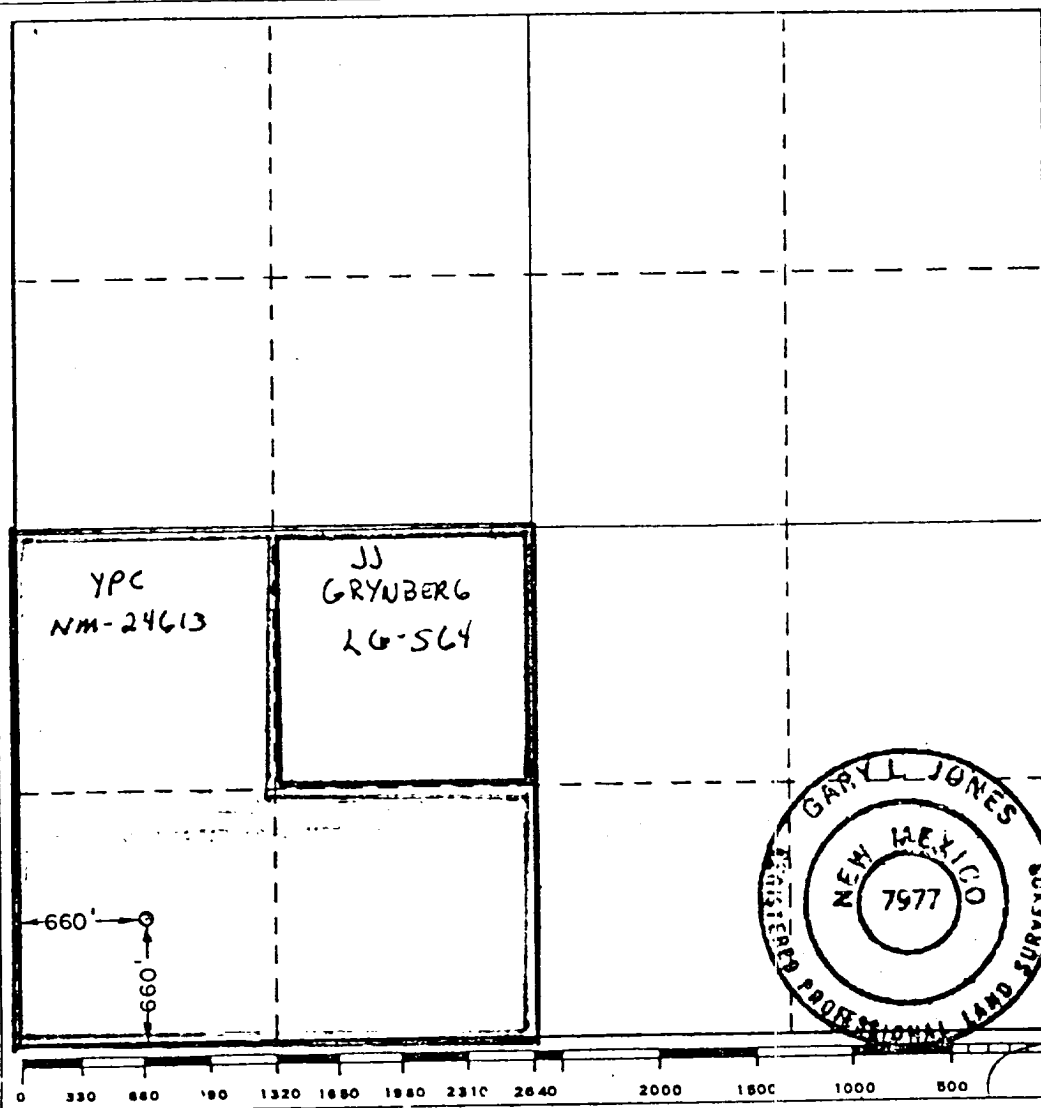
Operator YATES PETROLEUM CORPORATION			Lease Teseque "TQ" Federal		Well No. 1
Unit Letter M	Section 3	Township 5 South	Range 24 East	County Chaves	
Actual Footage Location of Well: 660 feet from the South line and 660 feet from the West line					
Ground Level Elev. 3965.5'	Producing Formation Abo		Pool Pecos Slope Abo		Dedicated Acreage: 160 Acres

1. Outline the acreage dedicated to the subject well by colored pencil or hachure marks on the plat below.
2. If more than one lease is dedicated to the well, outline each and identify the ownership thereof (both as to working interest and royalty).
3. If more than one lease of different ownership is dedicated to the well, have the interests of all owners been consolidated by communitization, unitization, force-pooling, etc?

☒ Yes ☐ No If answer is "yes," type of consolidation to be communitied

If answer is "no," list the owners and tract descriptions which have actually been consolidated. (Use reverse side of this form if necessary.)

No allowable will be assigned to the well until all interests have been consolidated (by communitization, unitization, forced-pooling, or otherwise) or until a non-standard unit, eliminating such interests, has been approved by the Commission.



CERTIFICATION

I hereby certify that the information contained herein is true and complete to the best of my knowledge and belief.

Ken Beardemphl
Name

Ken Beardemphl

Position

Regulatory Coordinator

Company

Yates Petroleum Corp.

Date

4/19/82

I hereby certify that the well location shown on this plat was plotted from field notes of actual surveys made by me or under my supervision, and that the same is true and correct to the best of my knowledge and belief.

Date Surveyed

April 12, 1982

Registered Professional Engineer and/or Land Surveyor

Gary L Jones
Certificate No. 1977