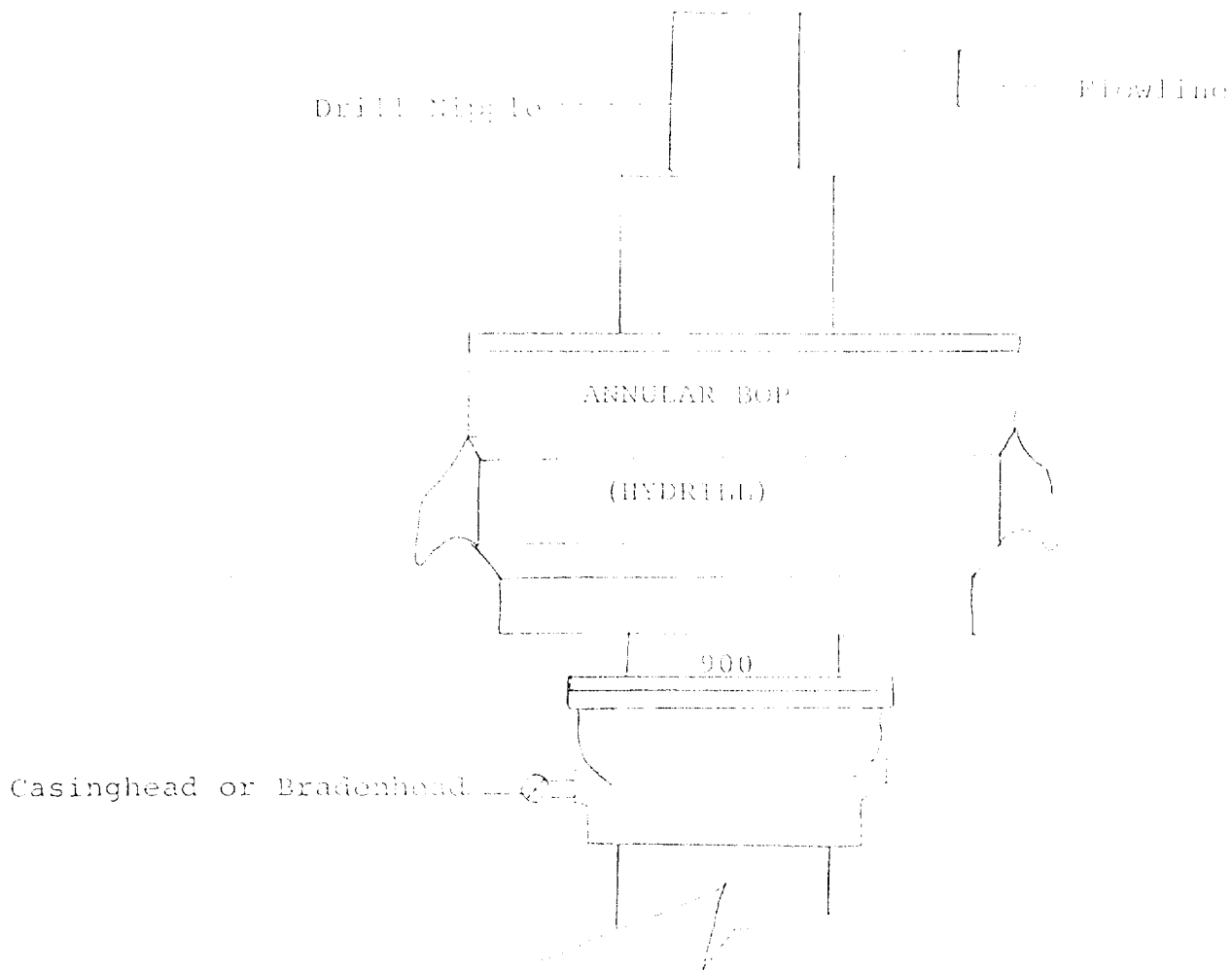


LA 11101 (U)



THE FOLLOWING CONSTITUTE MINIMUM BLOWOUT PREVENTER REQUIREMENTS

1. All preventers to be hydraulically operated with secondary manual controls installed prior to drilling out from under casing.
2. All connections from operating manifolds to preventers to be all steel. Hole or tube a minimum of one inch in diameter.
3. The available closing pressure shall be at least 15% in excess of that required with sufficient volume to operate the BOP's.
4. All connections to and from preventer to have a pressure rating equivalent to that of the BOP's.
5. Hole must be kept filled on trips below intermediate casing.

YATES PETROLEUM CORPORATION
O'Connell "VR" Federal #1
1790' FSL and 1980' FEL
Sec. 9-T6S-R26E

In conjunction with Form 9-331C, Application for Permit to Drill subject well, Yates Petroleum Corporation submits the following ten items of pertinent information in accordance with USGS requirements.

1. The geologic surface formation is sandy alluvium.

2. The estimated tops of geologic markers are as follows:

San Andres	583'
Glorieta	1637'
Fullerton	3041'
Abo	3673'
TD	4350'

3. The estimated depths at which anticipated water, oil or gas formations are expected to be encountered:

Water: approximately 250' - 330'

Oil or Gas: Abo 3695'

4. Proposed Casing Program: See Form 9-331C.

5. Pressure Control Equipment: See Form 9-331C and Exhibit B.

6. Mud Program: See Form 9-331C.

7. Auxiliary Equipment: Kelly Cock; pit level indicators and flow sensor equipment; sub with full-opening valve on floor, drill pipe connection.

8. Testing, Logging and Coring Program:

Samples: Surface casing to TD.

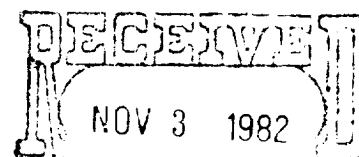
DST's: As warranted.

Coring: As warranted.

Logging: CNL-FDC TD to csg w/GR-CNL to surface & DLL from TD to csg
w/RxO.

9. No abnormal pressures or temperatures are anticipated.

10. Anticipated starting date: As soon as possible after approval.



OIL & GAS
U.S. GEOLOGICAL SURVEY
ROSWELL, NEW MEXICO

YATES PETROLEUM CORP.
O'Connell "UX" Fed #1
1790' FSL & 1980' FEL
Sec. 9 - T6S-R26E
CHAVES COUNTY, NM
EXHIBIT A

