

UNITED STATES
DEPARTMENT OF THE INTERIOR
GEOLOGICAL SURVEY

SUBMIT IN THE
NM OIL CONS. CO. SECTION
Drawer DD
Artesia, NM 88210

Form approved.
Budget Bureau No. 42-R1425.

APPLICATION FOR PERMIT TO DRILL, DEEPEN, OR PLUG BACK

1a. TYPE OF WORK DRILL ☒ DEEPEN ☐ PLUG BACK ☐

b. TYPE OF WELL OIL WELL ☒ GAS WELL ☐ OTHER ☐ SINGLE ZONE ☒ MULTIPLE ZONE ☐

2. NAME OF OPERATOR
McClellan Oil Corporation ✓

3. ADDRESS OF OPERATOR
P.O. Drawer 730, Roswell, New Mexico 88201

4. LOCATION OF WELL (Report location clearly and in accordance with any State requirements.*)
At surface

1980' FNL & 660' FWL
At proposed prod. zone

DEC 10 1982

14. DISTANCE IN MILES AND DIRECTION FROM NEAREST TOWN OR POST OFFICE
15 miles east of Hagerman, N.M.
ARTESIA, OFFICE

15. DISTANCE FROM PROPOSED*
LOCATION TO NEAREST
PROPERTY OR LEASE LINE, FT.
(Also to nearest drlg. unit line, if any) 660'

16. NO. OF ACRES IN LEASE
1440

17. NO. OF ACRES ASSIGNED
TO THIS WELL 40

18. DISTANCE FROM PROPOSED LOCATION*
TO NEAREST WELL, DRILLING, COMPLETED,
OR APPLIED FOR, ON THIS LEASE, FT. NA

19. PROPOSED DEPTH
2900'

20. ROTARY OR CABLE TOOLS
Rotary

21. ELEVATIONS (Show whether DF, RT, GR, etc.)

3618' G.L.

22. APPROX. DATE WORK WILL START*
Dec. 20, 1982

23. PROPOSED CASING AND CEMENTING PROGRAM

SIZE OF HOLE	SIZE OF CASING	WEIGHT PER FOOT	SETTING DEPTH	QUANTITY OF CEMENT
14"	10-3/4"	40 1/2 lb.	300'	200 sx Circulated
7-7/8"	4-1/2"	9 1/2 lb.	2900'	300 sx

Will drill to approximately 2900' to test the San Andres formation.
If production is indicated, will run 4 1/2" casing and attempt completion.

Estimated Geologic Tops: Yates 500'
Queen 1275'
Premier 1850'
San Andres 2020'

RECEIVED

NOV 24 1982

OIL & GAS
MINERALS MGMT. SERVICE
ROSWELL, NEW MEXICO

IN ABOVE SPACE DESCRIBE PROPOSED PROGRAM: If proposal is to deepen or plug back, give data on present productive zone and proposed new productive zone. If proposal is to drill or deepen directionally, give pertinent data on subsurface locations and measured and true vertical depths. Give blowout prevention program, if any.

SIGNED: Mark McClellan TITLE: Geologist DATE: November 22, 1982

(This space for Federal or State office use)
(Orig. Sgd.) GEORGE H. STEVART

PERMIT NO. DEC 6 1982

APPROVAL DATE

APPROVED BY: JAMES A. GILLHAM
DISTRICT SUPERVISOR

TITLE

DATE

Posted at 12-17-82

All distances must be from the outer boundaries of the Section.

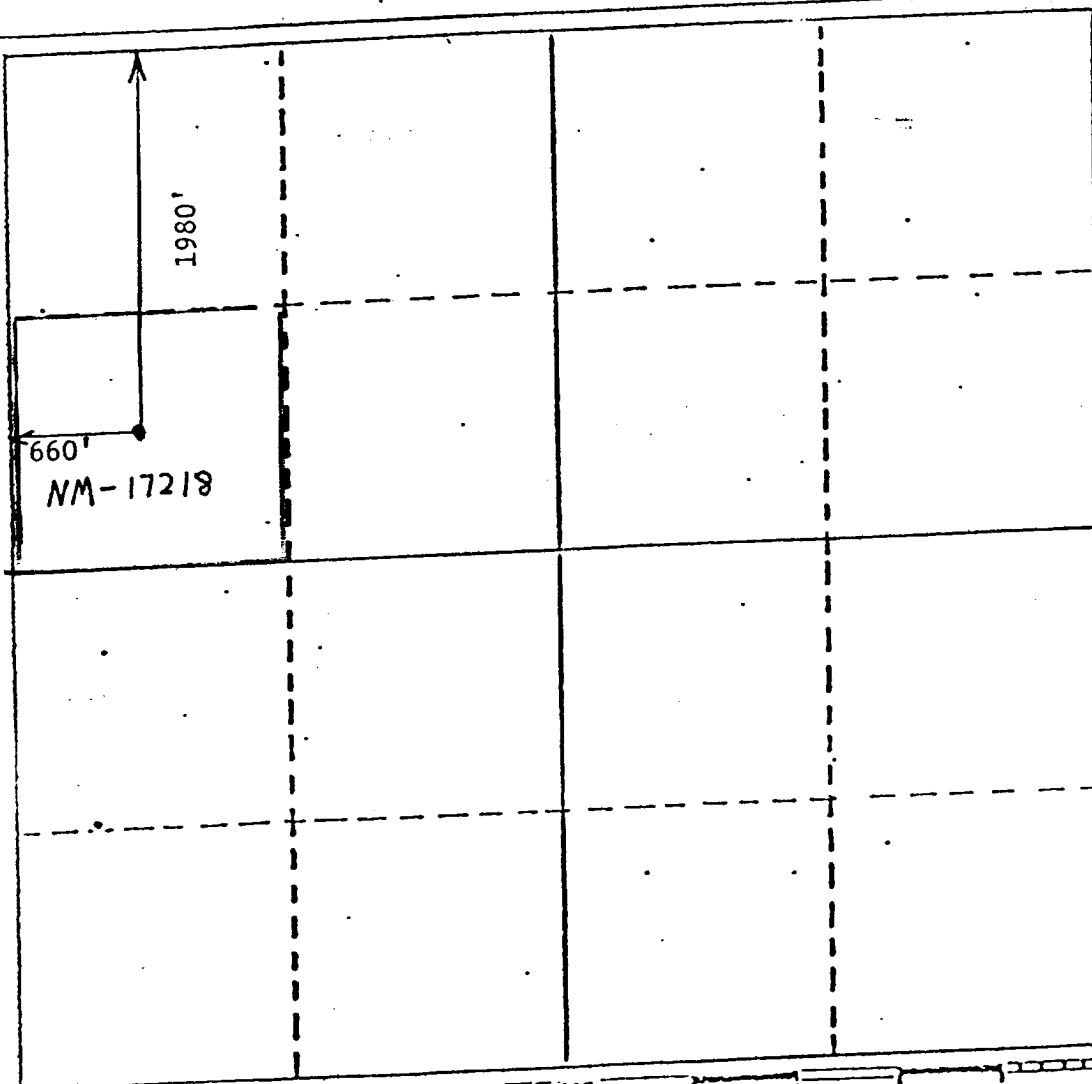
Operator McClellan Oil Corp.		Lease Paula Fed.		Well No. 1
Unit Letter E	Section 12	Township 14 South	Range 28 East	County Chaves
Actual Postage Location of Well: 1980 feet from the North line and 660 feet from the West line				
Ground Level Elev. 3618	Producing Formation San Andres		Pool Wildcat	Dedicated Acreage 40 Acres

1. Outline the acreage dedicated to the subject well by colored pencil or hatchure marks on the plat below.
2. If more than one lease is dedicated to the well, outline each and identify the ownership thereof (both as to working interest and royalty).
3. If more than one lease of different ownership is dedicated to the well, have the interests of all owners been consolidated by communitization, unitization, force-pooling, etc?

☐ Yes ☐ No If answer is "yes," type of consolidation _____

If answer is "no," list the owners and tract descriptions which have actually been consolidated. (Use reverse side of this form if necessary.) _____

No allowable will be assigned to the well until all interests have been consolidated (by communitization, unitization, force-pooling, or otherwise) or until a non-standard unit, eliminating such interests, has been approved by the Division.



CERTIFICATION

I hereby certify that the information contained herein is true and complete to the best of my knowledge and belief.

Mark McClellan

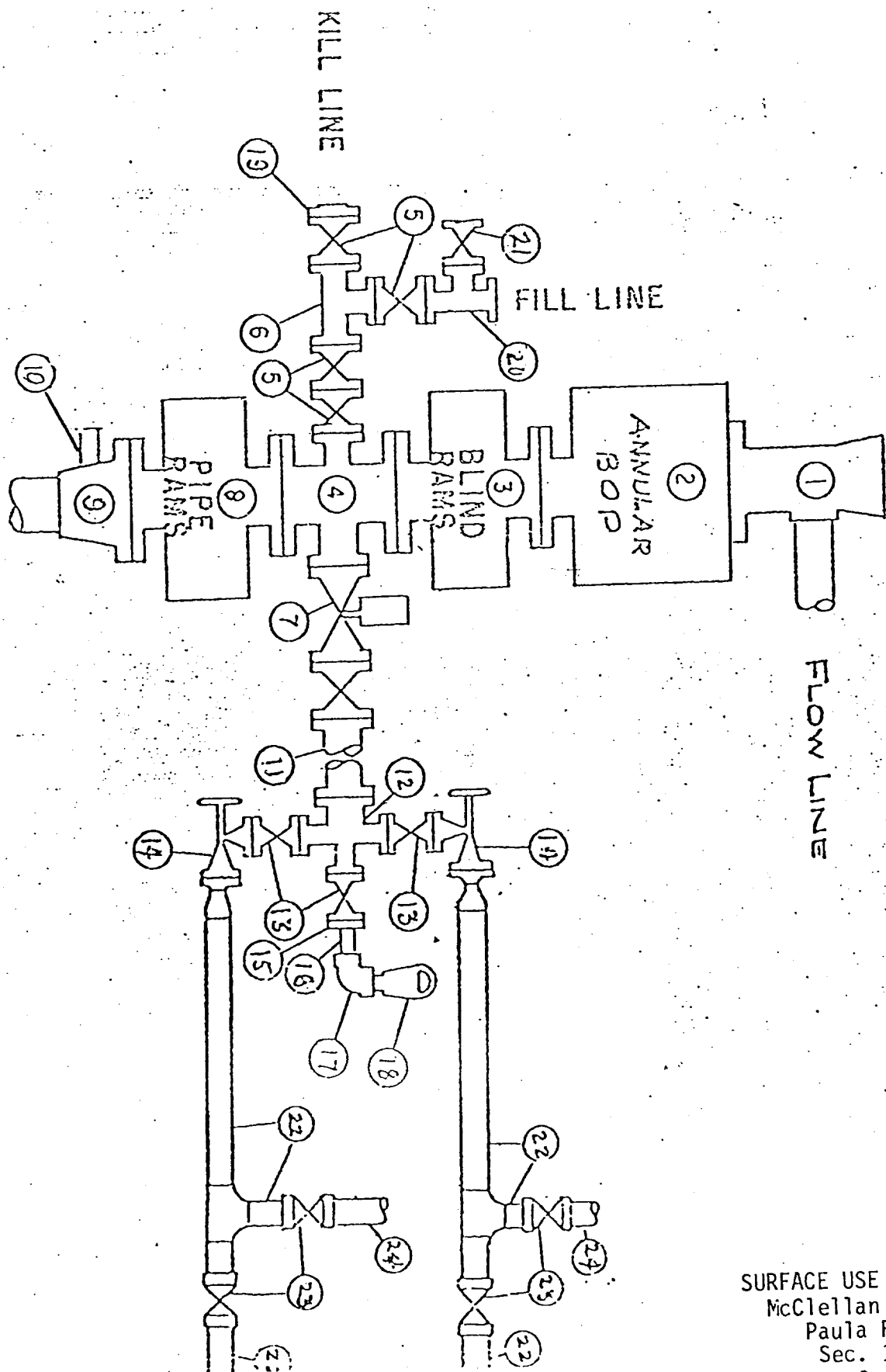
Name
Mark McClellan
Position
Geologist
Company
McClellan Oil Corp.

Date
November 23, 1982

I hereby certify that the well location shown on this plat was plotted from field notes of actual surveys made by me or under my supervision, and that the same is true and correct to the best of my knowledge and belief.

Date Surveyed
November 12, 1982
Surveyed by
D. J. A. O.
Registered Professional Engineer
and/or Land Surveyor
John D. J. A. O., P.E. & L.S.
Professional Engineer
0290

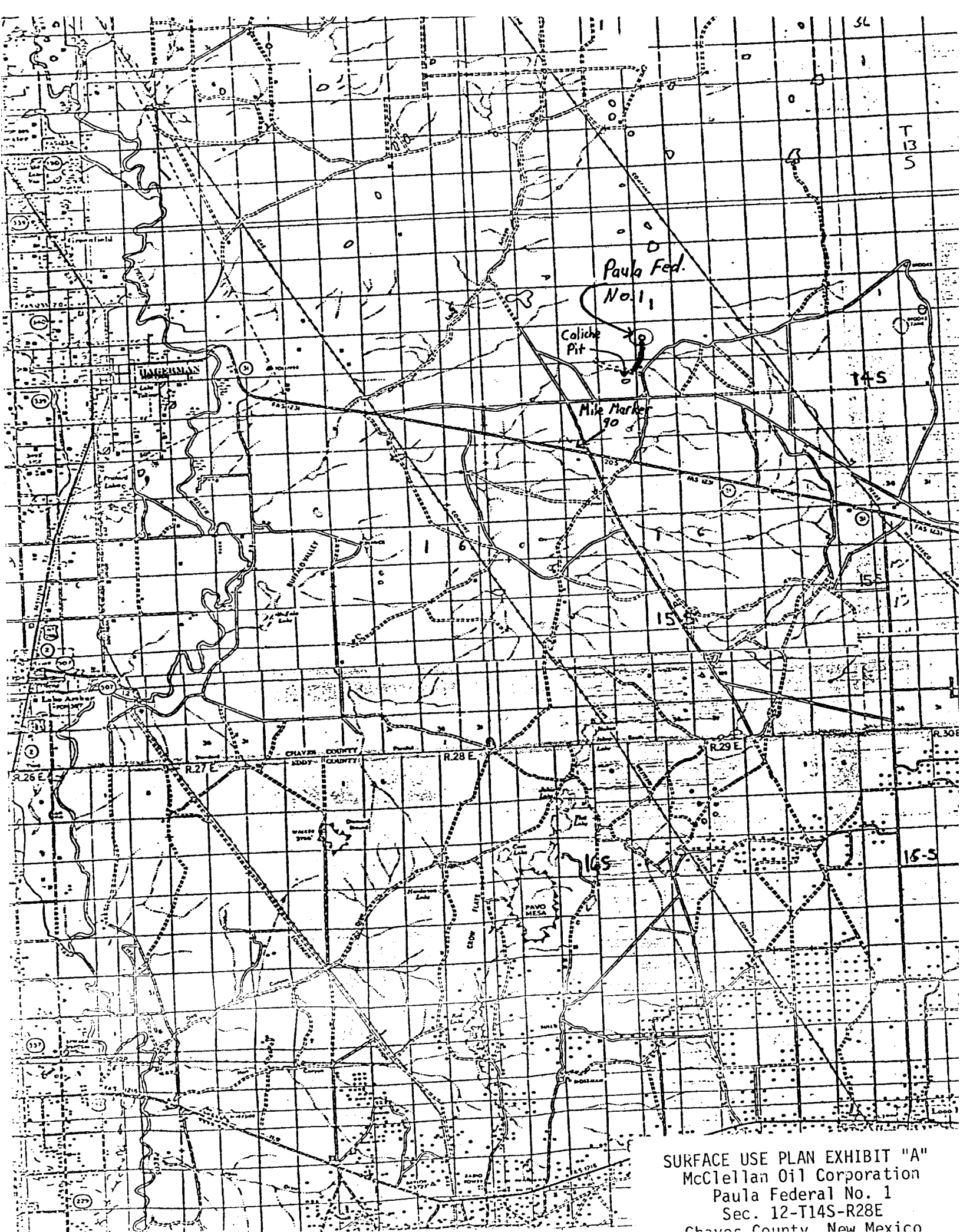
BLOWOUT PREVENTER SPECIFICATION



SURFACE USE PLAN EXHIBIT "E"
 McClellan Oil Corporation
 Paula Federal No. 1
 Sec. 12-T14S-R28E
 Santa Fe, New Mexico

(NTL-6)

15. Other pertinent information: _____



SURFACE USE PLAN EXHIBIT "A"
McClellan Oil Corporation
Paula Federal No. 1
Sec. 12-T14S-R28E
Chaves County, New Mexico

Paula Federal No. 1

Sec. 12-T14S-R28E

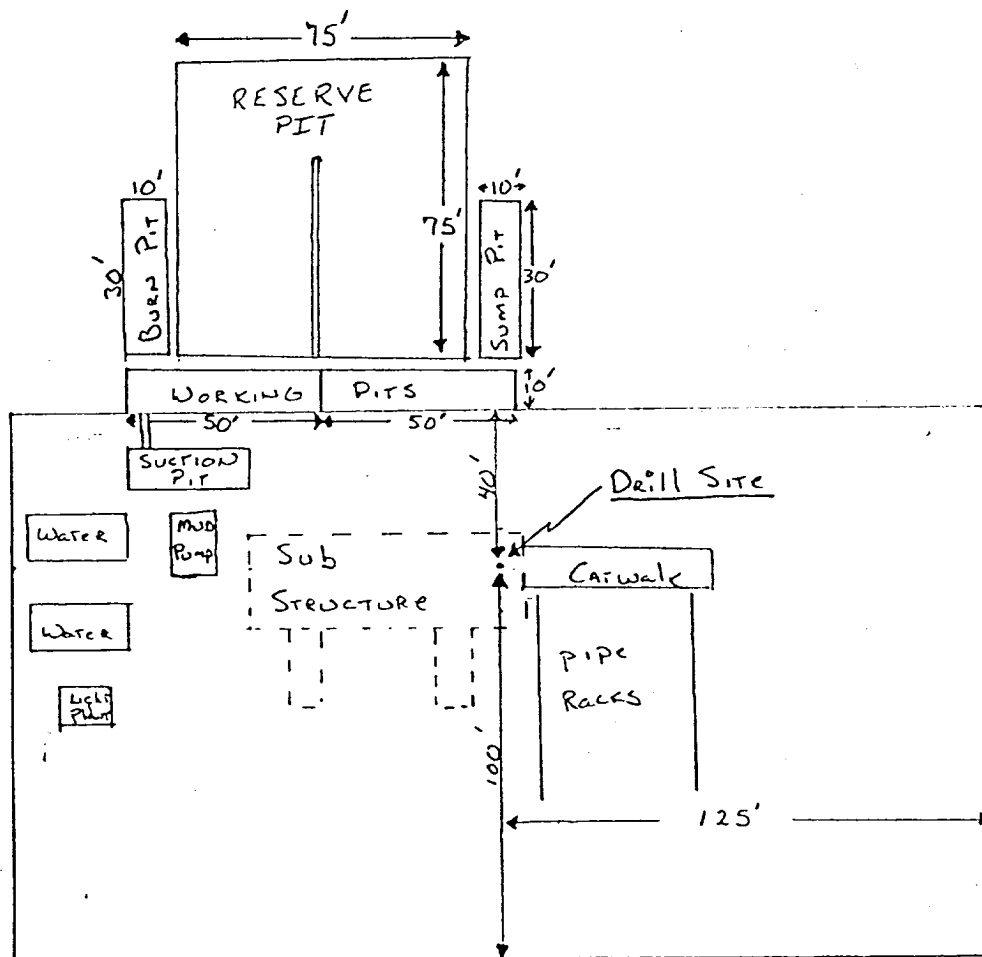
Cheyenne County New Mexico

McCLELLAN OIL CORPORATION
SUGGESTED PAD DIMENSIONS

Reserve Pits 4 ft. deep, plastic lined

Working pits 5 ft. deep

No cellar



Scale 1" = 50'