

**NEW MEXICO OIL CONSERVATION COMMISSION
WELL LOCATION AND ACREAGE DEDICATION PLAT**

RECEIVED Form C-102
Effective 1-1-65
Editions C-128

All distances must be from the outer boundaries of the Section.

DEC 15 1982

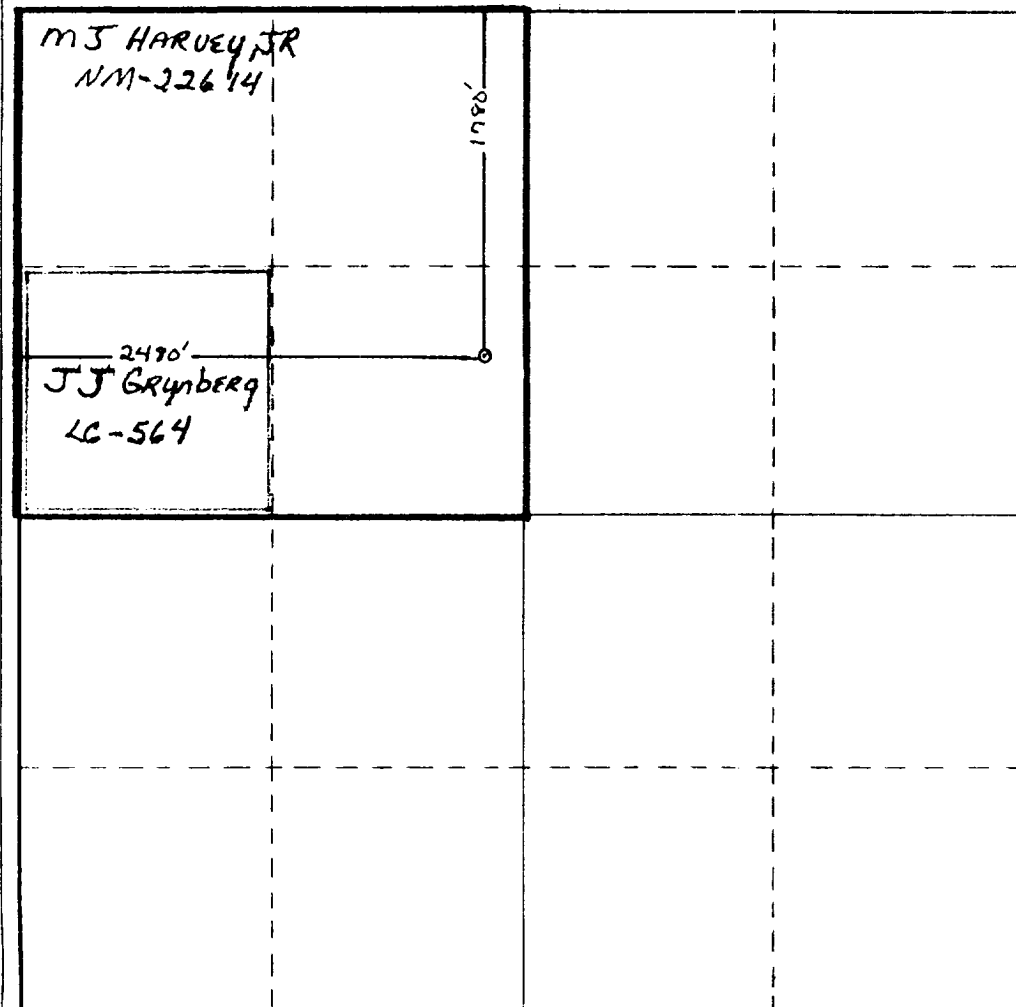
Operator YATES PETROLEUM CORPORATION			Lease Mike Harvey "TR" Federal		Well No. O.C.D. 4
Unit Letter F	Section 3	Township 5 South	Range 24 East	County Chaves	
Actual Footage Location of Well: 1780 feet from the North line and 2480 feet from the West line.					
Ground Level Elev. 3964.2' GL	Producing Formation Abo		Pool Pecos Slope Abo		Dedicated Acreage: 160 Acres

1. Outline the acreage dedicated to the subject well by colored pencil or hachure marks on the plat below.
2. If more than one lease is dedicated to the well, outline each and identify the ownership thereof (both as to working interest and royalty).
3. If more than one lease of different ownership is dedicated to the well, have the interests of all owners been consolidated by communitization, unitization, force-pooling, etc?

☒ Yes ☐ No If answer is "yes," type of consolidation to be communitized

If answer is "no," list the owners and tract descriptions which have actually been consolidated. (Use reverse side of this form if necessary.) _____

No allowable will be assigned to the well until all interests have been consolidated (by communitization, unitization, forced-pooling, or otherwise) or until a non-standard unit, eliminating such interests, has been approved by the Commission.



CERTIFICATION

I hereby certify that the information contained herein is true and complete to the best of my knowledge and belief.

Cy Cowan

Name

Cy Cowan

Position

Regulatory Coordinator

Company

Yates Petroleum Corp.

Date

12/7/82

I hereby certify that the well location shown on this plat was plotted from field notes made by me or under my supervision, and that the same is true and correct to the best of my knowledge and belief.

GARY L. JONES
REGISTERED PROFESSIONAL LAND SURVEYOR
NEW MEXICO
1977

Date Surveyed

December 6, 1982

Registered Professional Engineer and/or Land Surveyor

Gary Jones

Certificate No.

7977