

NM OIL CONS - COMMISSION  
Drawer DL  
Artesia, UNITED STATES  
DEPARTMENT OF THE INTERIOR  
GEOLOGICAL SURVEYRECEIVED  
OCT 8 1982  
MINERALS MGMT. SERVICE  
ROSWELL, NEW MEXICO  
RECEIVED  
(Other instr. on reverse side)Form approved.  
Budget Bureau No. 42-R1425.

C/87

APPLICATION FOR PERMIT TO DRILL, DEEPEN, OR PLUG BACK				5. LEASE DESIGNATION AND SERIAL NO. NM-19417	
1a. TYPE OF WORK DRILL <input checked="" type="checkbox"/> DEEPEN <input type="checkbox"/>				6. IF INDIAN, ALLOTTEE OR TRIBE NAME	
b. TYPE OF WELL OIL WELL <input type="checkbox"/> GAS WELL <input checked="" type="checkbox"/> OTHER <input type="checkbox"/>				7. UNIT AGREEMENT NAME	
2. NAME OF OPERATOR Yates Petroleum Corporation				8. FARM OR LEASE NAME Bernice "RP" Federal	
3. ADDRESS OF OPERATOR 207 S. 4th, Artesia, New Mexico 88210				9. WELL NO. 1	
4. LOCATION OF WELL (Report location clearly and in accordance with any State requirements.) At surface 1500' FNL and 1600' FEL At proposed prod. zone same				10. FIELD AND POOL, OR WILDCAT Pecos Slope Abo	
14. DISTANCE IN MILES AND DIRECTION FROM NEAREST TOWN OR POST OFFICE* approximately 22 miles NNE of Roswell, NM				11. SEC., T., R., M., OR BLK. AND SURVEY OR AREA Sec. 3-T8S-R25E	
15. DISTANCE FROM PROPOSED* LOCATION TO NEAREST PROPERTY OR LEASE LINE, FT. (Also to nearest drlg. unit line, if any) 1500'		16. NO. OF ACRES IN LEASE 160		17. NO. OF ACRES ASSIGNED TO THIS WELL 160	
18. DISTANCE FROM PROPOSED LOCATION* TO NEAREST WELL, DRILLING COMPLETED, OR APPLIED FOR, ON THIS LEASE, FT.		19. PROPOSED DEPTH appr. 4225'		20. ROTARY OR CABLE TOOLS Rotary	
21. ELEVATIONS (Show whether DF, RT, GR, etc.) 3611.9' GL				22. APPROX. DATE WORK WILL START* ASAP	
23. PROPOSED CASING AND CEMENTING PROGRAM					
SIZE OF HOLE	SIZE OF CASING	WEIGHT PER FOOT	SETTING DEPTH	QUANTITY OF CEMENT	
14 3/4"	10 3/4"	40.5# J-55	appr. 800'	600 sx circulated	
7 7/8"	4 1/2"	9.5#	TD	350 sx	

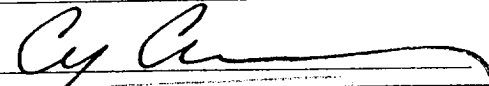
We propose to drill and test the Abo and intermediate formations. Approximately 800' of surface casing will be set and cement circulated to shut off gravel and caving. If needed (lost circulation) 8 5/8" intermediate casing will be run to 1500' and cemented with enough cement calculated to tie back into the surface casing. If commercial, production casing will be run and cemented with adequate cover, perforated and stimulated as needed for production.

MUD PROGRAM: FW gel & LCM to 1000', Brine to 3500', Brine & KCL water to TD.

BOP PROGRAM: BOP's will be installed at the offset and tested daily.

GAS NOT DEDICATED.

IN ABOVE SPACE DESCRIBE PROPOSED PROGRAM: If proposal is to deepen or plug back, give data on present productive zone and proposed new productive zone. If proposal is to drill or deepen directionally, give pertinent data on subsurface locations and measured and true vertical depths. Give blowout preventer program, if any.

24. SIGNED 		TITLE Regulatory Coordinator		DATE 10/8/82	
(This space for Federal or State office use)					
PERMIT NO. (Orig. Sgd.) GEORGE H. STEWART		APPROVAL DATE			
APPROVED BY OCT 18 1982		TITLE		DATE	
CONDITIONS OF APPROVAL, IF ANY: <u>NO MORE APPROVAL FOR NON-STD LOCATION</u>					

NEW MEXICO OIL CONSERVATION COMMISSION  
WELL LOCATION AND ACREAGE DEDICATION PLAT

Form C-102  
Supersedes C-128  
Effective 1-1-65

All distances must be from the outer boundaries of the Section.

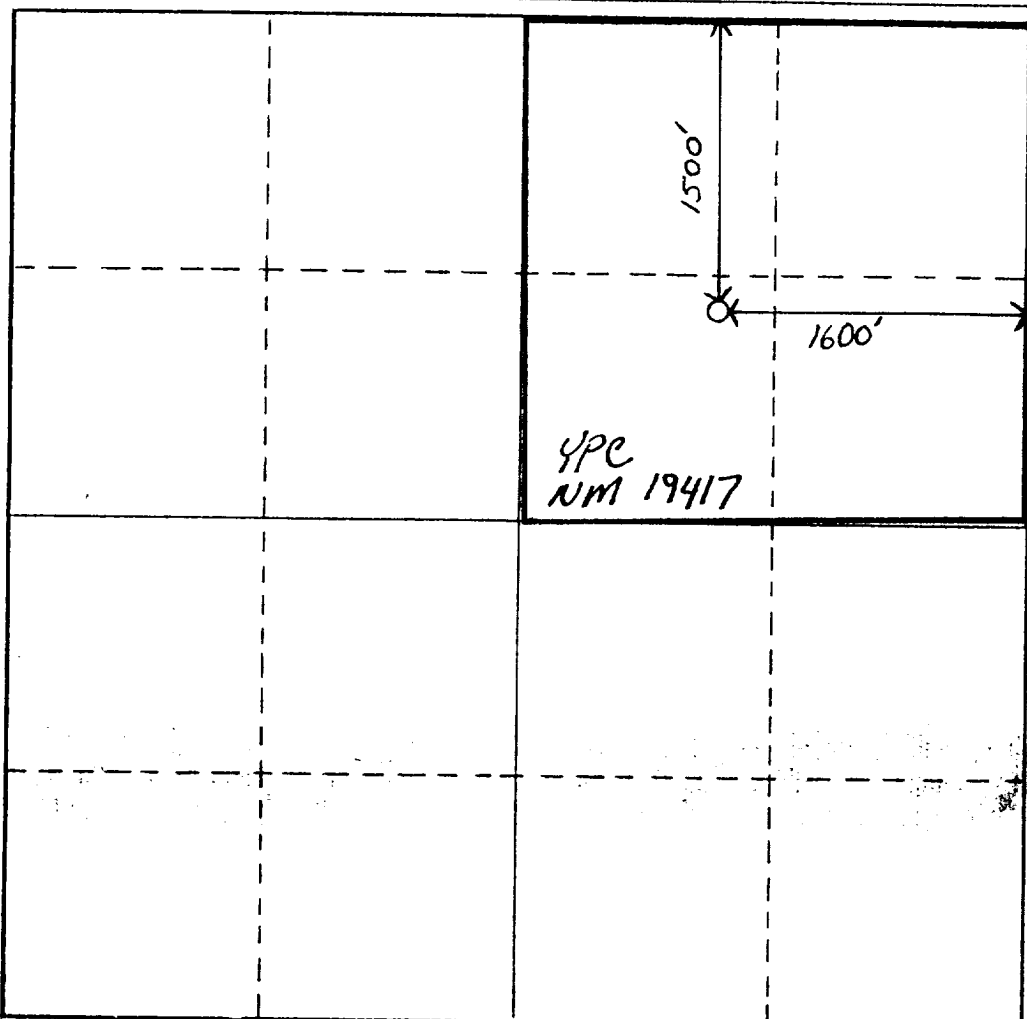
Operator <b>YATES PETROLEUM CORPORATION</b>			Lease <b>Bernice "RP" Federal</b>		Well No. <b>1</b>
Unit Letter <b>G</b>	Section <b>3</b>	Township <b>8 South</b>	Range <b>25 East</b>	County <b>Chaves</b>	
Actual Footage Location of Well: <b>1500</b> feet from the <b>North</b> line and <b>1600</b> feet from the <b>East</b> line					
Ground Level Elev. <b>3611.9'</b>	Producing Formation <b>ABO</b>		Pool <b>PECOS Slope ABO</b>	Dedicated Acreage: <b>160</b> Acres	

1. Outline the acreage dedicated to the subject well by colored pencil or hachure marks on the plat below.
2. If more than one lease is dedicated to the well, outline each and identify the ownership thereof (both as to working interest and royalty).
3. If more than one lease of different ownership is dedicated to the well, have the interests of all owners been consolidated by communitization, unitization, force-pooling, etc?

☐ Yes ☒ No If answer is "yes," type of consolidation \_\_\_\_\_

If answer is "no," list the owners and tract descriptions which have actually been consolidated. (Use reverse side of this form if necessary.) \_\_\_\_\_

No allowable will be assigned to the well until all interests have been consolidated (by communitization, unitization, forced-pooling, or otherwise) or until a non-standard unit, eliminating such interests, has been approved by the Commission.



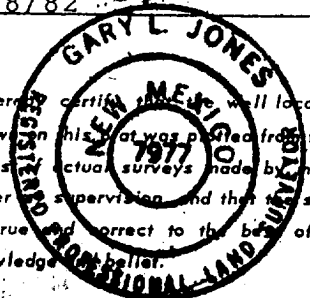
**CERTIFICATION**

I hereby certify that the information contained herein is true and complete to the best of my knowledge and belief.

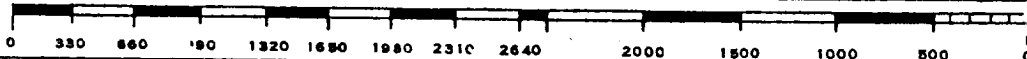
*Cy Cowan*

Name  
**Cy Cowan**  
Position  
**Regulatory Coordinator**  
Company  
**Yates Petroleum Corp**  
Date  
**10/8/82**

I hereby certify that the well location shown on this plat was plotted from field notes of actual surveys made by me or under supervision and that the same is true and correct to the best of my knowledge and belief.



Date Surveyed  
**October 6, 1982**  
Registered Professional Engineer and/or Land Surveyor  
*Daryl Jones*  
Certificate No.  
**7977**



YATES PETROLEUM CORPORATION  
ernice "RP" Federal  
1500' FNL & 1600' FEL  
Sec.3-T8S-R25E

In conjunction with Form 9-331C, Application for Permit to Drill subject well, Yates Petroleum Corporation submits the following ten items of pertinent information in accordance with USGS requirements.

1. The geologic surface formation is quaternary alluvium.

2. The estimated tops of geologic markers are as follows:

San Andres	401'
Glorieta	1458'
Fullerton	2875'
Abo	3587'
TD	4225'

3. The estimated depths at which anticipated water, oil or gas formations are expected to be encountered:

Water: approximately 225'

Oil or Gas: Abo 3545'

4. Proposed Casing Program: See Form 9-331C.

5. Pressure Control Equipment: See Form 9-331C and Exhibit B.

6. Mud Program: See Form 9-331C.

7. Auxiliary Equipment: Kelly Cock; pit level indicators and flow sensor equipment;  
sub with full-opening valve on floor, drill pipe connection.

8. Testing, Logging and Coring Program:

Samples: surface casing to TD

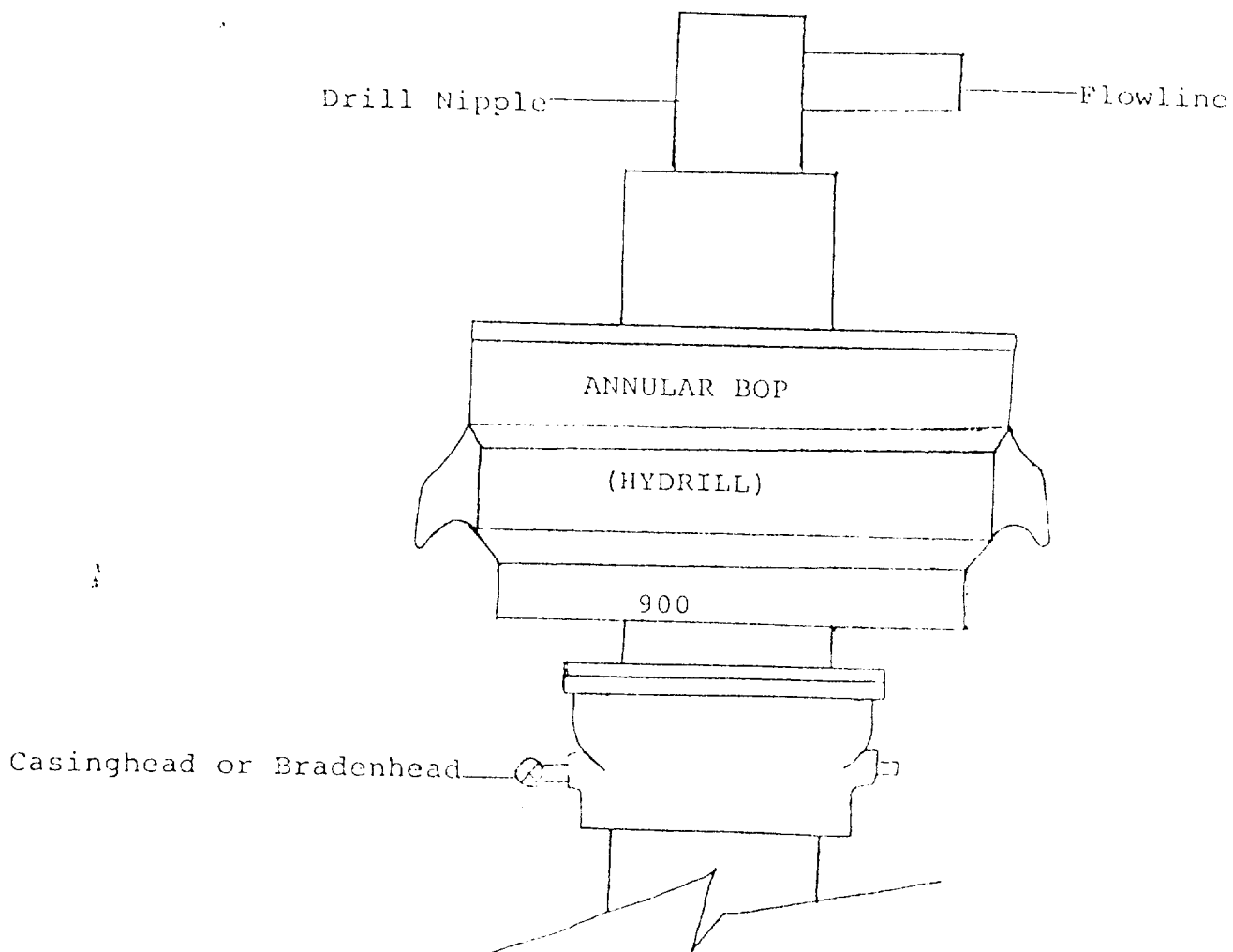
DST's: as warranted

Coring: none

Logging: Intermediate casing to TD. CNL-FDC TD to csg. w/GR-CNL to surface & DLL from TD to csg w/selected min RxO.

9. No abnormal pressures or temperatures are anticipated.

10. Anticipated starting date: As soon as possible after approval.

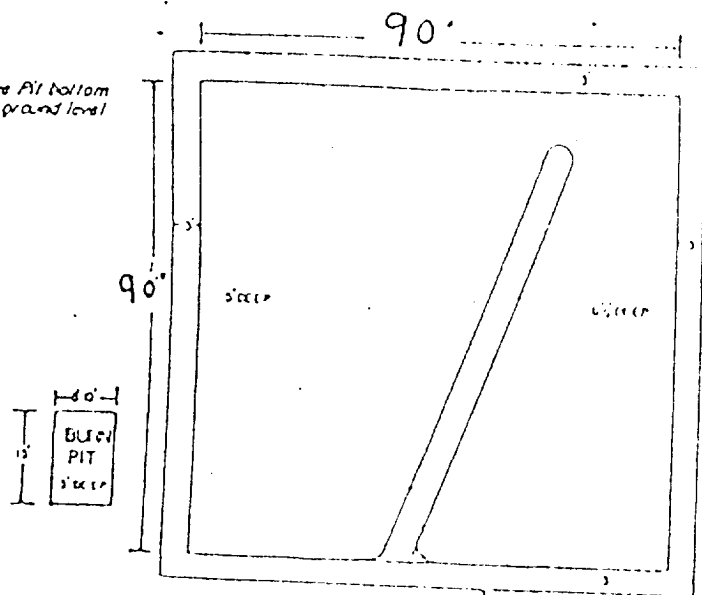


THE FOLLOWING CONSTITUTE MINIMUM BLOWOUT PREVENTER REQUIREMENTS

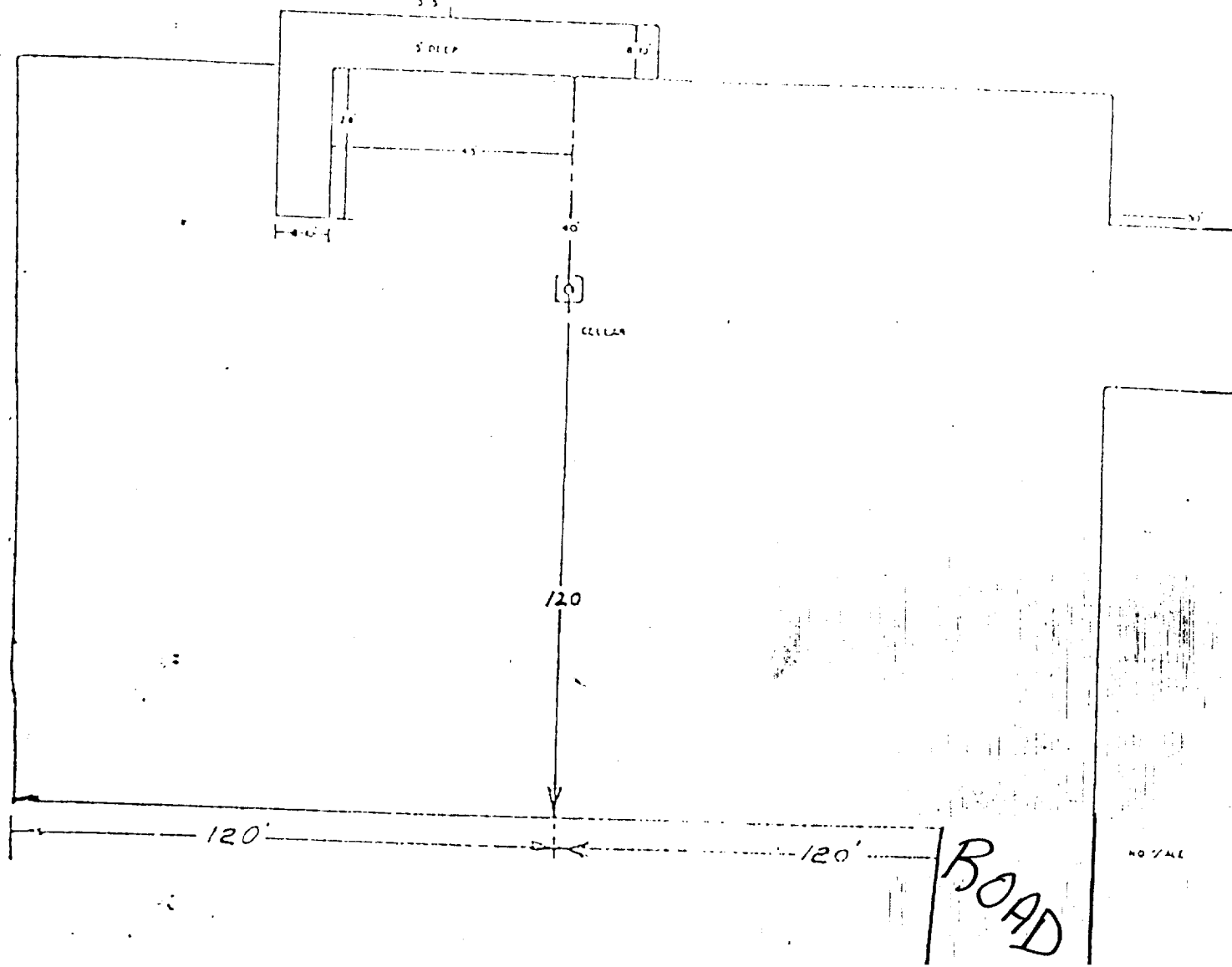
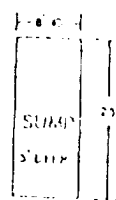
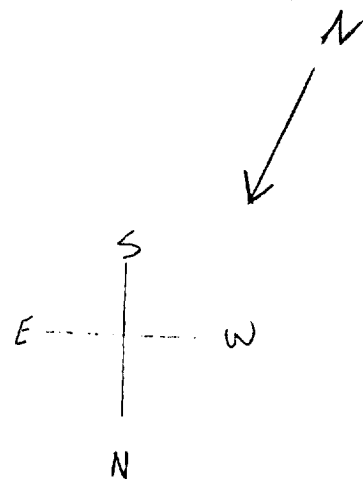
1. All preventers to be hydraulically operated with secondary manual controls installed prior to drilling out from under casing.
2. All connections from operating manifolds to preventers to be all steel. Hole or tube a minimum of one inch in diameter.
3. The available closing pressure shall be at least 15% in excess of that required with sufficient volume to operate the BOP's.
4. All connections to and from preventer to have a pressure rating equivalent to that of the BOP's.
5. Hole must be kept filled on trips below intermediate casing.

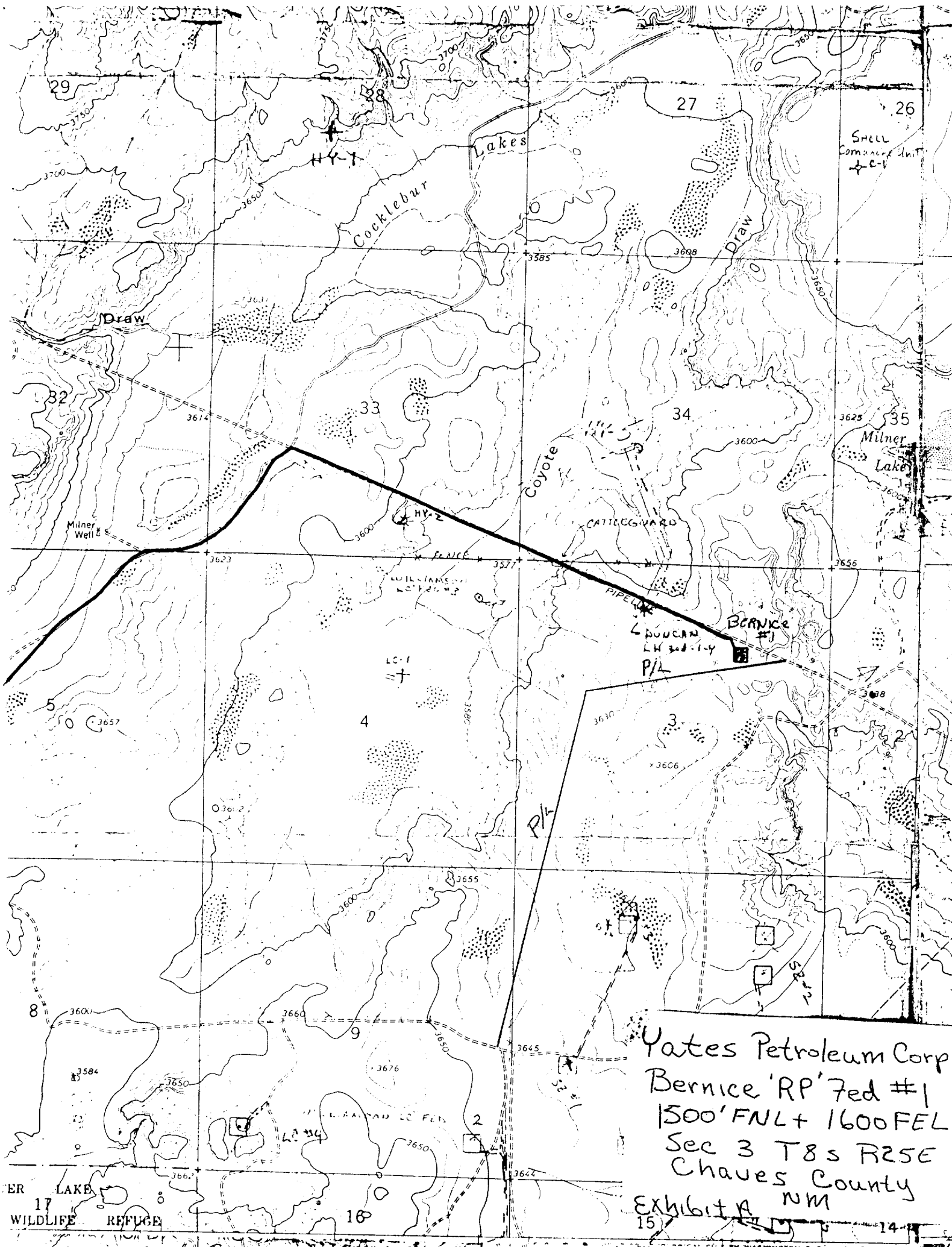
# YATES PETROLEUM CORPORATION

Reserve All bottom  
to be of grade level  
10-111.



NOTE:  
This well is located on  
high ground and is not  
subject to flood.





Yates Petroleum Corp  
Bernice 'RP' Fed #1  
1500' FNL + 1600 FEL  
Sec 3 T8s R25E  
Chaves County  
NM  
Exhibit A