

UNITED STATES
DEPARTMENT OF THE INTERIOR
GEOLOGICAL SURVEY

Drawer DD
Artesia, NM 88210

RECEIVED BY
NOV 25 1985
O. C. D.
ARTESIA OFFICE

LEASE DESIGNATION AND SERIAL NO.
NM 18611

APPLICATION FOR PERMIT TO DRILL, DEEPEN, OR PLUG BACK

1a. TYPE OF WORK
DRILL ☒ DEEPEN ☐ PLUG BACK ☐
b. TYPE OF WELL
OIL WELL ☐ GAS WELL ☐ OTHER ☐
Water Injection

2. NAME OF OPERATOR
Cibola Energy Corporation

3. ADDRESS OF OPERATOR
P. O. Box 1668, Albuquerque, New Mexico

4. LOCATION OF WELL (Report location clearly and in accordance with any State requirements)
At surface 1650 FSL & 1200 FEL
At proposed prod. zone

14. DISTANCE IN MILES AND DIRECTION FROM NEAREST TOWN OR POST OFFICE
24 miles ENE of Roswell

15. DISTANCE FROM PROPOSED* LOCATION TO NEAREST PROPERTY OR LEASE LINE, FT. (Also to nearest drilg. unit line, if any)
16. NO. OF ACRES IN LEASE 2560
17. NO. OF ACRES ASSIGNED TO THIS WELL 320

18. DISTANCE FROM PROPOSED LOCATION* TO NEAREST WELL, DRILLING, COMPLETED, OR APPLIED FOR, ON THIS LEASE, FT.
19. PROPOSED DEPTH 2320
20. ROTARY OR CABLE TOOLS Rotary

21. ELEVATIONS (Show whether DF, RT, GR, etc.)
3891.0 GR

7. UNIT AGREEMENT NAME
Aciete Negra
8. FARM OR LEASE NAME
Aciete Negra
9. WELL NO.
2
10. FIELD AND POOL, OR WILDCAT
Wildcat
11. SEC., T., R., M., OR BLE. AND SURVEY OR AREA
Sec. 12-9S-27E
12. COUNTY OR PARISH
Chaves
13. STATE
NM
22. APPROX. DATE WORK WILL START*
December 1, 1985

23. PROPOSED CASING AND CEMENTING PROGRAM

SIZE OF HOLE	SIZE OF CASING	WEIGHT PER FOOT	SETTING DEPTH	QUANTITY OF CEMENT
10"	8 5/8"	24#	1645'	650 sx BJ Lite, 150 sx CL C
7 7/8"	4 1/2"	9.5#	2320	150 sx Class C cmt

We plan to drill out the plugs from surface through 2250' to a TD of 2320'. Then we will run 4 1/2" casing to approximately 2320' to be cemented with 150 sx of cement in order to bring cement to the 8 5/8" surface casing which is set at 1645'. We will then perforate and acidize this zone. An anti-scaling additive will be used before injecting any disposal fluids.

We will be injecting disposal water from the Aciete Negra #4 well located 330 FSL & 940 FEL, Sec. 12-10S-27E, which is producing water from the Siluro-Devonian.

Disposal water will be trucked from the Aciete Negra #4 to the proposed disposal well for approx 30 days. If the disposal well is found to be suitable, we will build a 3" plastic pipeline along the existing approved road between the Aciete Negra #2 and the Aciete Negra #4.

IN ABOVE SPACE DESCRIBE PROPOSED PROGRAM: If proposal is to deepen or plug back, give data on present productive zone and proposed new productive zone. If proposal is to drill or deepen directionally, give pertinent data on subsurface locations and measured and true vertical depths. Give blowout preventer program, if any.

24. SIGNED Karen Azar TITLE Drilling Secretary DATE 11/12/85

(This space for Federal or State office use)

PERMIT NO. _____ APPROVAL DATE _____

APPROVED BY S/Phil Kirk TITLE Area Manager DATE 21 NOV 1985
CONDITIONS OF APPROVAL, IF ANY:

WELL LOCATION AND ACREAGE DEDICATION

Form No. 1
Superior Oil & Gas Co.

All distances must be from the outer boundaries of the well

CIBOLA ENERGY

ACTE NIGRA

2

12

95

275

CHAVES

50

SOUTH

1200

EAST

Siluro-Devonian

Wildcat

320

the acreage dedicated to the subject well by colored pencil or hash mark marks on the plat below

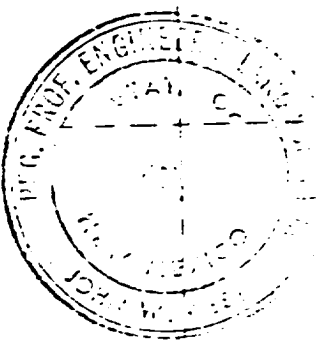
if more than one lease is dedicated to the well, outline each and identify the ownership thereof, as to working interest and royalty

if more than one lease of different ownership is dedicated to the well, have the interests shown as to ownership, communitization, unitization, force pooling, etc.

XX No. If answer is "yes" type of consubstantiation

if answer is "no" list the owners and tract descriptions which have actually been consubstantiated. If answer is "no" list the owners and tract descriptions which have actually been consubstantiated. All leases held by operator and participating parties

if more than one lease will be assigned to the well until all interests have been consubstantiated, list the interests, as to ownership, communitization, unitization, force pooling, or otherwise, or until a non-standard unit, eliminating such interests, has been established, then list the interests



Anita Vigil

Anita Vigil

Drilling Secretary

Cibola Energy Corporation

November 23, 1982

I hereby certify that the well location shown on this plat was ascertained from the notes of actual surveys made by me or under my supervision, and that the same is true and correct to the best of my knowledge and belief.

11/19/82

John W. West

JOHN W. WEST N.M. NO. 676

APPLICATION FOR DRILLING

Cibola Energy Corporation
Aciete Negra #2, Sec. 12-9S-27E
1650 FSL & 1200 FEL
Chaves County, New Mexico

In conjunction with form 9-331C, Application for Permit to Drill Subject Well, Cibola Energy Corporation submits the following ten items of pertinent information in accordance with U.S. Minerals Management Service requirements.

1. The geologic surface is Quaternary fill.

2. Actual tops of Geologic markers:

	<u>Depth</u>
Yates	519
San Andres	1592
Slaughter	2200

3. The estimated depth at which water, oil or gas are expected:

Oil & Gas - Slaughter 2200

4. Proposed casing program -
8 5/8" casing is set at 1645'. We plan to drill out plugs to 2320' and run 4 1/2" casing to 2320'. See Form 9-331C.

5. Pressure control equipment: ~~See form 9-331C.~~ Exhibit A

6. Mud program - Fresh water.

7. Auxiliary Equipment - None

8. Testing, and logging program - A PFC log will be run before perforating.

9. No abnormal pressures or temperatures are expected.

10. Anticipated starting date is December 1, 1985.

11. BOP Diagram - See Exhibit A.

Aciete Negra #2

BOP Diagram

Shaefer
Manual closing
8" 900#

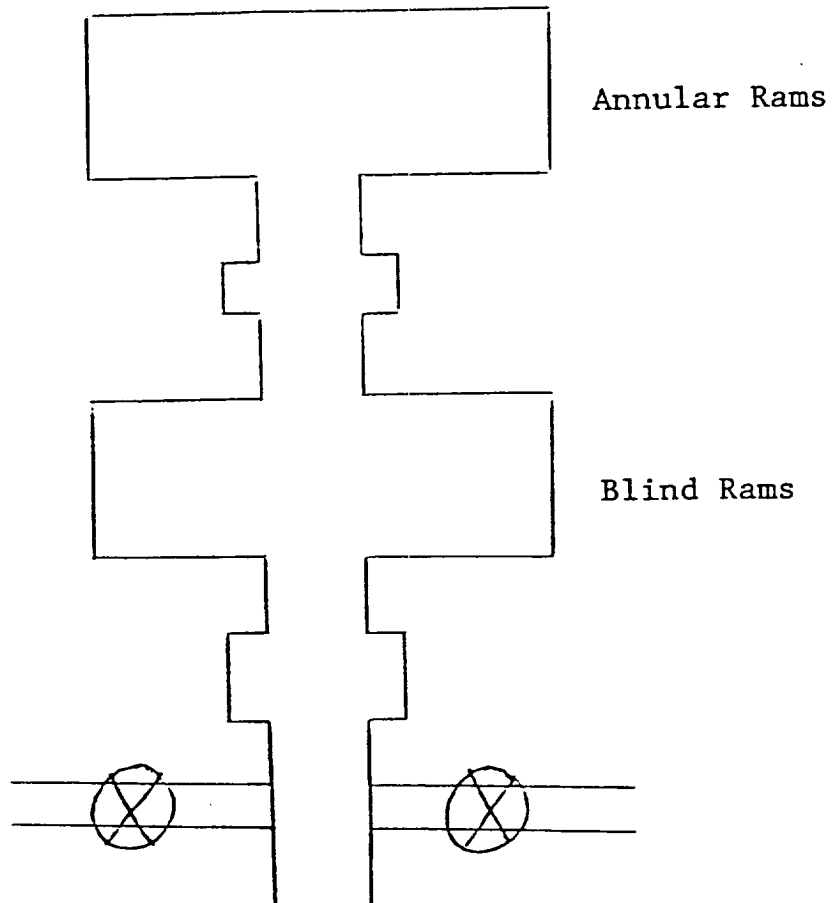


Exhibit A

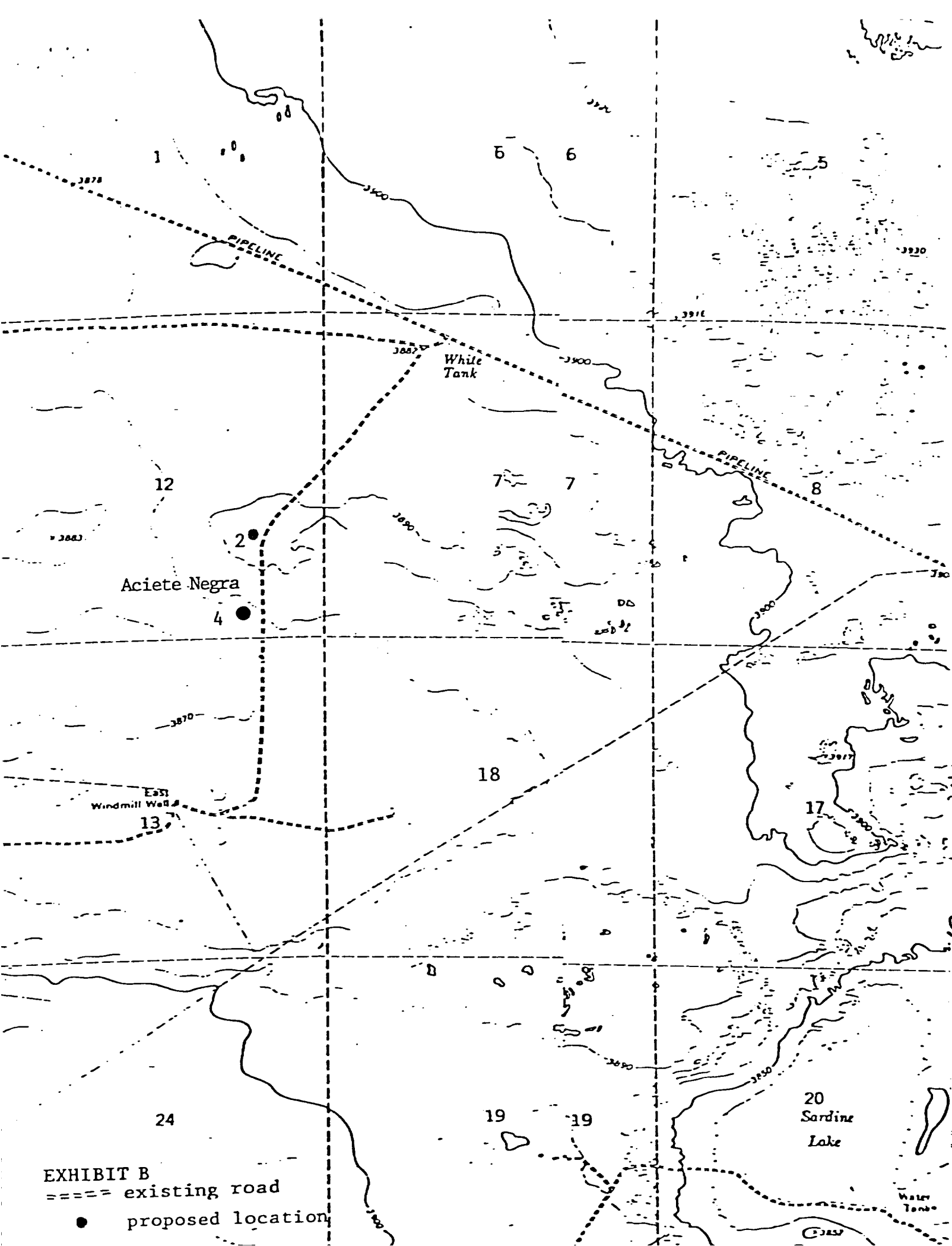
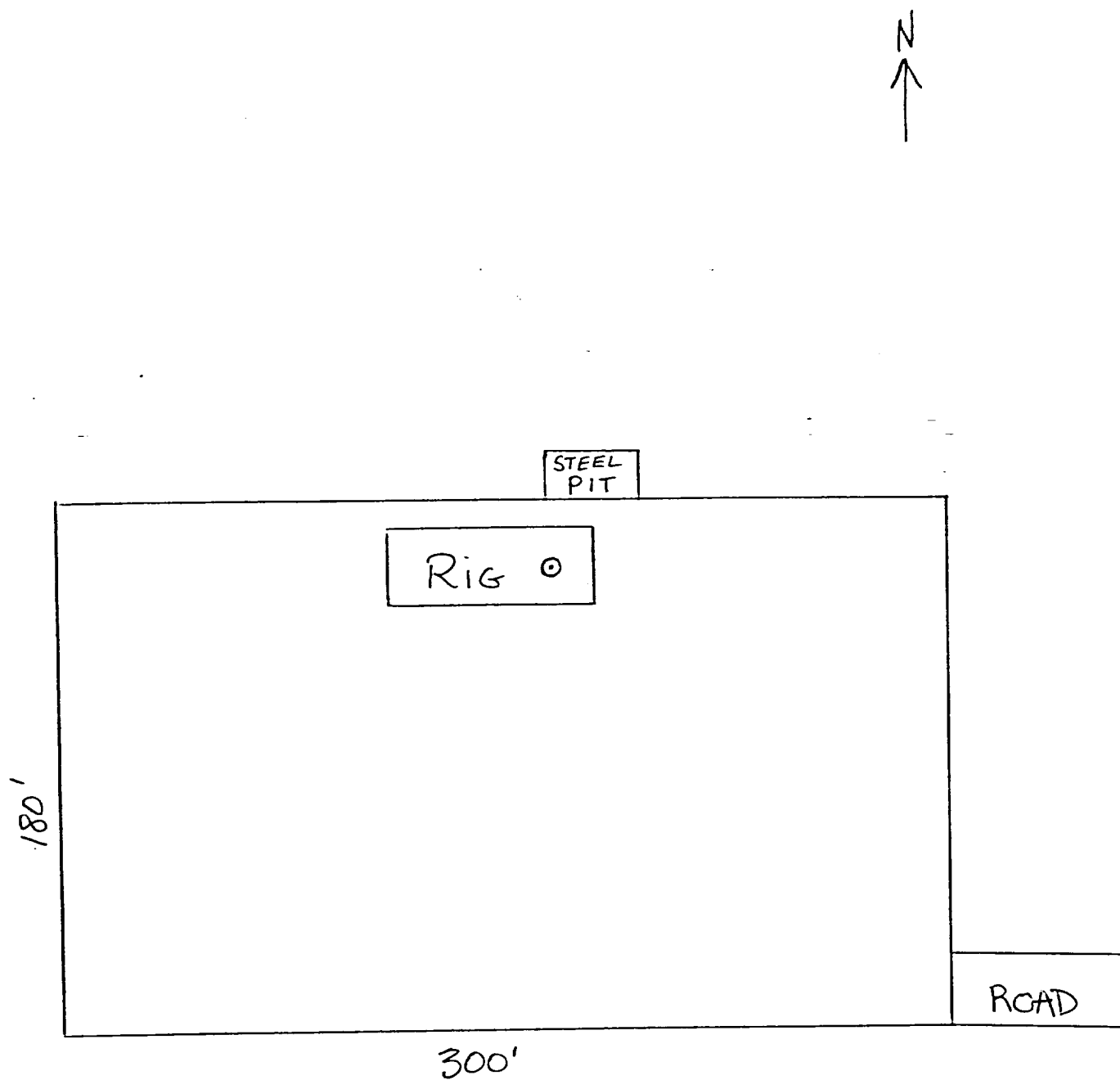


EXHIBIT B
==== existing road
● proposed location



Aciete Negra #2

Exhibit C