

STATE OF NEW MEXICO  
ENERGY AND MINERALS DEPARTMENT

JIL CONSERVATION DIVISION  
P. O. BOX 2088  
SANTA FE, NEW MEXICO 87501

Form C-101  
Revised 10-1-78

NO. OF COPIES RECEIVED	
DISTRIBUTION	
SANTA FE	<input checked="" type="checkbox"/>
FILE	<input checked="" type="checkbox"/>
U.S.G.S.	<input checked="" type="checkbox"/>
LAND OFFICE	<input checked="" type="checkbox"/>
OPERATOR	<input checked="" type="checkbox"/>

RECEIVED

DEC 29 1982

O. C. D.

APPLICATION FOR PERMIT TO DRILL, DEEPEN, OR PLUG BACK ARTESIA, OFFICE

a. Type of Work

DRILL ☒ DEEPEN ☐ PLUG BACK ☐  
OIL WELL ☐ GAS WELL ☒ OTHER ☐ SINGLE ZONE ☐ MULTIPLE ZONE ☐

b. Name of Operator

Yates Petroleum Corporation

c. Address of Operator

207 S. 4th, Artesia, New Mexico 88210

d. Location of Well

UNIT LETTER A LOCATED 660 FEET FROM THE North LINE

NO 660 FEET FROM THE East LINE OF SEC. 36 TWP. 10S RGE. 24E NMPM

5A. Indicate Type of Lease

STATE ☒ FEE ☐

5. State Oil & Gas Lease No.

LG-1008

7. Unit Agreement Name

8. Farm or Lease Name

Berrendo "WP" State

9. Well No.

1

10. Field and Pool, or Wildcat

Undes. Pecos Slope

12. County

Chaves

19. Proposed Depth

4100'

19A. Formation

Abo

20. Rotary or C.T.

Rotary

1. Elevation (show whether DF, RL, etc.)

3500.3' GL

21A. Kind & Status Plug. Bond

Blanket

21B. Drilling Contractor

L&M

22. Approx. Date Work will start

ASAP

PROPOSED CASING AND CEMENT PROGRAM

SIZE OF HOLE	SIZE OF CASING	WEIGHT PER FOOT	SETTING DEPTH	SACKS OF CEMENT	EST. TOP
14 3/4"	10 3/4"	40.5# J-55	700'	750 sx	circulated
7 7/8"	4 1/2"	9.5#	TD	300 sx	

We propose to drill and test the Abo and intermediate formations. Approximatley 700' of surface casing will be set and cement circulated to shut off gravel and caving. If needed (lost circulation) 8 5/8" intermediate casing will be run to 1500' and cemented with enough cement calculated to tie back into the surface casing. If commercial, production casing will be run and cemented with adequate cover, perforated and stimulated as needed for production.

MUD PROGRAM: FW gel/LCM to 700', Brine to 3500', Brine/KCL water to TD.

BOP PROGRAM: BOP's will be installed at the offset and tested daily.

GAS NOT DEDICATED.

ABOVE SPACE DESCRIBE PROPOSED PROGRAM; IF PROPOSAL IS TO DEEPEN OR PLUG BACK, GIVE DATA ON PRESENT PRODUCTIVE ZONE AND PROPOSED NEW PRODUCTION ZONE. GIVE BLOWOUT PREVENTER PROGRAM, IF ANY.

I hereby certify that the information above is true and complete to the best of my knowledge and belief.

By C. J. Conway Title Regulatory Coordinator

Date 12/28/82

(This space for State Use)

PROVED BY Mark Walker TITLE OIL AND GAS INSPECTOR

DATE JAN 01 1983

CONDITIONS OF APPROVAL, IF ANY:

Notify N.M.C.C. in sufficient time to witness cementing the 10 3/4" casing

APPROVED BY 130 DAYS  
7-1-83  
UNLESS CANCELLED UNDERWAY

Parted 12/29/82  
12/29/82  
1-7-83

**NEW MEXICO OIL CONSERVATION COMMISSION  
WELL LOCATION AND ACREAGE DEDICATION PLAT**

Form C-102  
Supersedes C-128  
Effective 1-1-65

All distances must be from the outer boundaries of the Section.

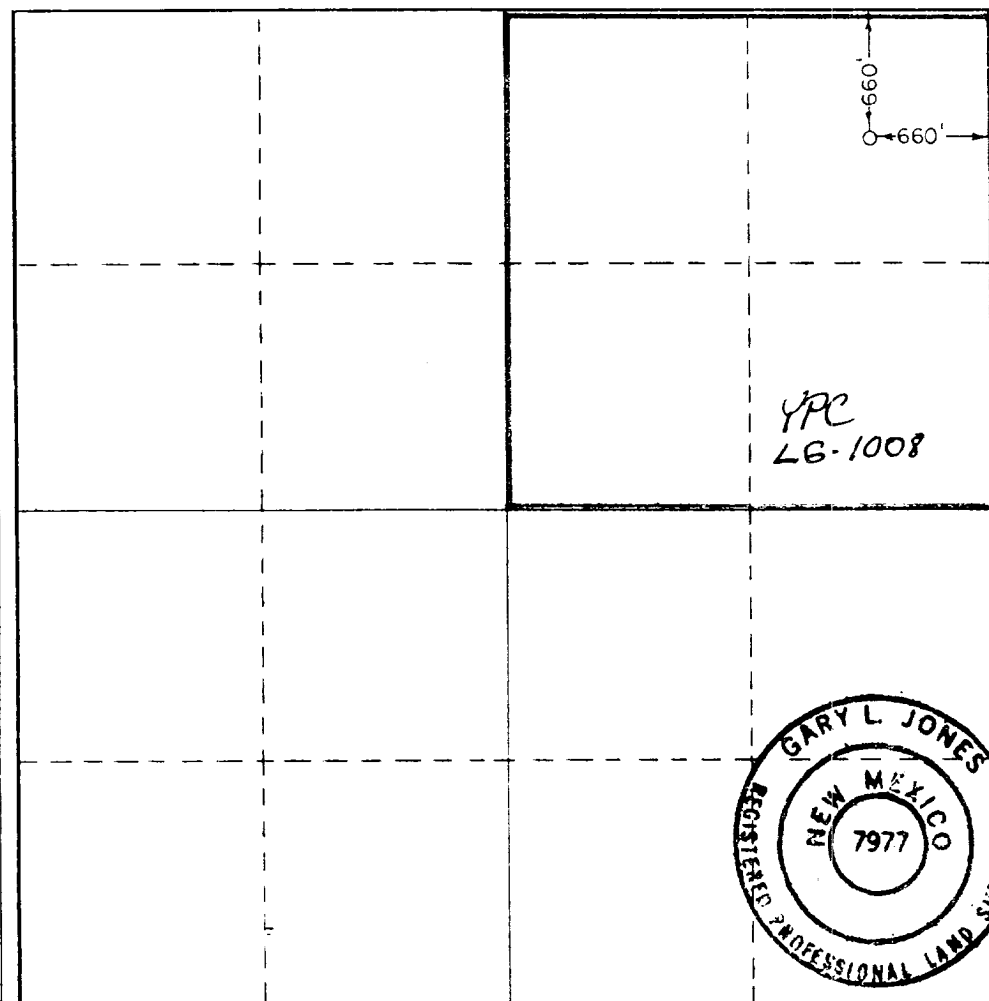
Operator <b>YATES PETROLEUM CORPORATION</b>			Lease <b>Berrendo "WP" State</b>		Well No. <b>1</b>
Tract Letter <b>A</b>	Section <b>36</b>	Township <b>10 South</b>	Range <b>24 East</b>	County <b>Chaves</b>	
Actual Footage Location of Well: <b>660</b> feet from the <b>North</b> line and <b>660</b> feet from the <b>East</b> line					
Ground Level Elev. <b>3500.3'</b>	Producing Formation <b>ABO</b>		Pool <b>PECOS Slope ABO</b>	Dedicated Acreage: <b>160</b> Acres	

1. Outline the acreage dedicated to the subject well by colored pencil or hatchure marks on the plat below.
2. If more than one lease is dedicated to the well, outline each and identify the ownership thereof (both as to working interest and royalty).
3. If more than one lease of different ownership is dedicated to the well, have the interests of all owners been consolidated by communitization, unitization, force-pooling, etc?

☐ Yes ☒ No If answer is "yes," type of consolidation \_\_\_\_\_

If answer is "no," list the owners and tract descriptions which have actually been consolidated. (Use reverse side of this form if necessary.) \_\_\_\_\_

No allowable will be assigned to the well until all interests have been consolidated (by communitization, unitization, forced-pooling, or otherwise) or until a non-standard unit, eliminating such interests, has been approved by the Commission.



**CERTIFICATION**

I hereby certify that the information contained herein is true and complete to the best of my knowledge and belief.

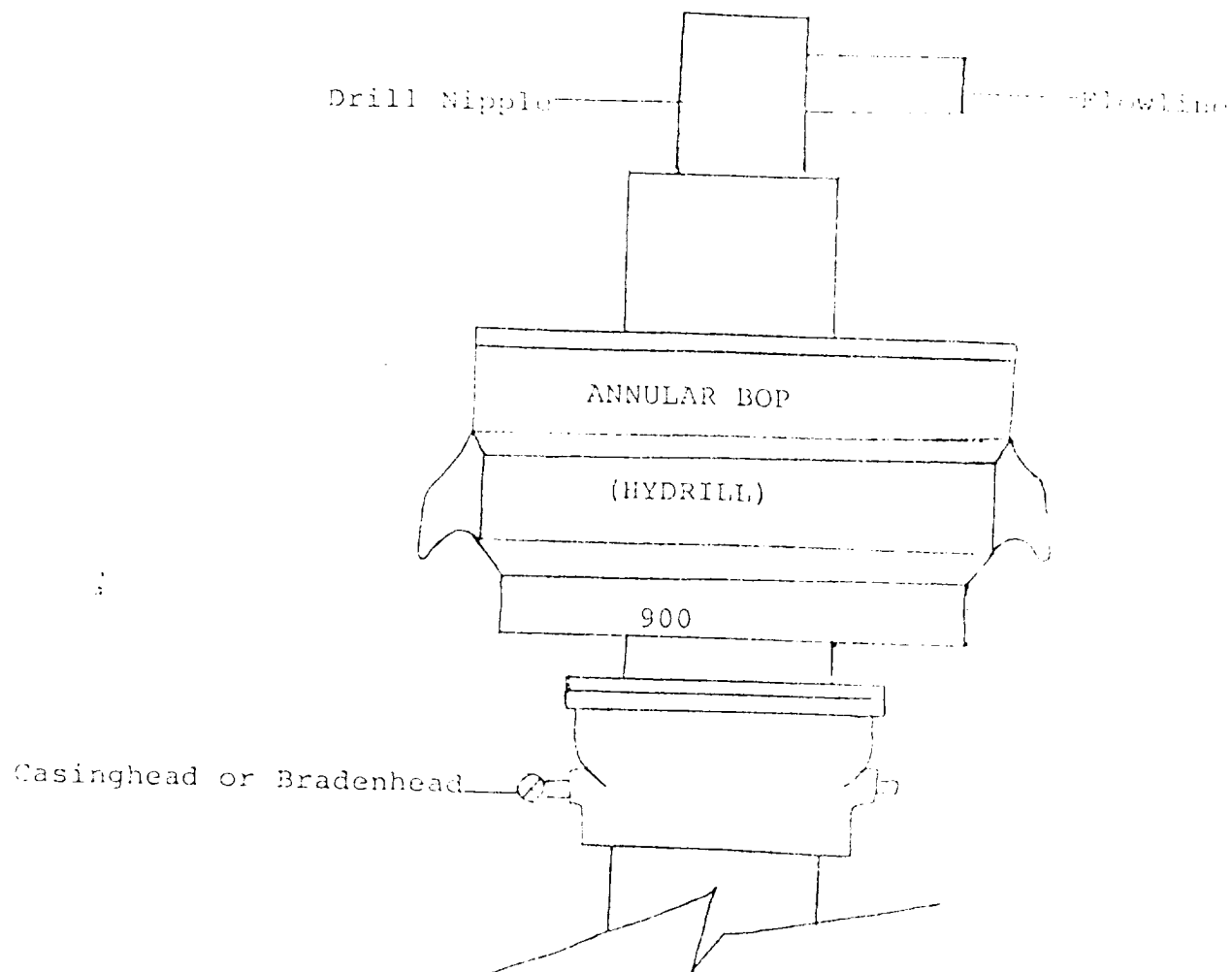
*Cy Cowan*  
Name  
**Cy Cowan**  
Position  
**Regulatory Coordinator**  
Company  
**Yates Petroleum Corp.**  
Date  
**12/28/82**

I hereby certify that the well location shown on this plat was plotted from field notes of actual surveys made by me or under my supervision, and that the same is true and correct to the best of my knowledge and belief.

Date Surveyed  
**December 16, 1982**  
Registered Professional Engineer and/or Land Surveyor

*Gary L. Jones*  
Certificate No.

**7977**



THE FOLLOWING CONSTITUTE MINIMUM BLOWOUT PREVENTER REQUIREMENTS

1. All preventers to be hydraulically operated with secondary manual controls installed prior to drilling out from under casing.
2. All connections from operating manifolds to preventers to be all steel. Hole or tube a minimum of one inch in diameter.
3. The available closing pressure shall be at least 15% in excess of that required with sufficient volume to operate the BOP's.
4. All connections to and from preventer to have a pressure rating equivalent to that of the BOP's.
5. Hole must be kept filled on trips below intermediate casing.