

NM OIL CONS. COMMISSION UNITED STATES
Drawer DD DEPARTMENT OF THE INTERIOR
Artesia, NM 88202 GEOLOGICAL SURVEY

APPLICATION FOR PERMIT TO DRILL, DEEPEN, OR PLUG BACK

1a. TYPE OF WORK

DRILL ☒DEEPEN ☐PLUG BACK ☐

b. TYPE OF WELL

OIL
WELL ☐GAS
WELL ☒

OTHER

SINGLE
ZONE ☒MULTIPLE
ZONE ☐

2. NAME OF OPERATOR

TRANSWESTERN GAS SUPPLY COMPANY ✓

RECEIVED

3. ADDRESS OF OPERATOR

2801 North Main, Roswell, New Mexico 88201

4. LOCATION OF WELL (Report location clearly and in accordance with any State requirements.)

At surface

1980' FSL 1980' FWL Sec.34-4S-21E

At proposed prod. zone

Same

14. DISTANCE IN MILES AND DIRECTION FROM NEAREST TOWN OR POST OFFICE*

39 air miles northwest of Roswell, New Mexico

15. DISTANCE FROM PROPOSED*

LOCATION TO NEAREST
PROPERTY OR LEASE LINE, FT.
(Also to nearest drlg. unit line, if any)

1980'

16. NO. OF ACRES IN LEASE

1920

17. NO. OF ACRES ASSIGNED
TO THIS WELL

160

18. DISTANCE FROM PROPOSED LOCATION*
TO NEAREST WELL, DRILLING, COMPLETED,
OR APPLIED FOR, ON THIS LEASE, FT.

None

19. PROPOSED DEPTH

3800' Abo

20. ROTARY OR CABLE TOOLS

Rotary

21. ELEVATIONS (Show whether DF, RT, GR, etc.)

4522' GL

22. APPROX. DATE WORK WILL START*

As soon as possible

23.

PROPOSED CASING AND CEMENTING PROGRAM

SIZE OF HOLE	SIZE OF CASING	WEIGHT PER FOOT	SETTING DEPTH	QUANTITY OF CEMENT
17-1/2"	13-3/8"	48.0# K-55	60'	Grout To Surface w/redi-Mix
11"	7-5/8"	26.4# K-55	1500'±	450 sx - Circulated
6-3/4"	4-1/2"	10.5# J-55	3800'±	300 sx - Cemented back to 2200'±.

It is proposed to drill to approximately 3800' to test Abo and intermediate formations. Will drill with rotary tools, using mud circulation. Complete in most favorable zone by perforating casing and treating the formation.

Double-ram 3000# WP BOP will be installed after setting 7-5/8" casing and tested daily during drilling operations.

See attached "Supplemental Drilling Data".

Gas is dedicated to TRANSWESTERN PIPELINE COMPANY.

IN ABOVE SPACE DESCRIBE PROPOSED PROGRAM: If proposal is to deepen or plug back, give data on present productive zone and proposed new productive zone. If proposal is to drill or deepen directionally, give pertinent data on subsurface locations and measured and true vertical depths. Give blowout preventer program, if any.

24.

SIGNED

JERRY W. LONG

TITLE Agent

DATE December 23, 1982

(This space for Federal or State office use)

PERMIT NO.

APPROVED

APPROVAL DATE

(ORIG. SGD.) DAVID R. GLASS

APPROVED BY

CONDITIONS OF

DEC 30 1982

JAMES A. GILLHAM
DISTRICT SUPERVISOR

RECEIVED

DATE

DEC 27 1982

OIL & GAS
MINERALS MGMT. SERVICE
ROSWELL, NEW MEXICO

All distances must be from the outer boundaries of the Section.

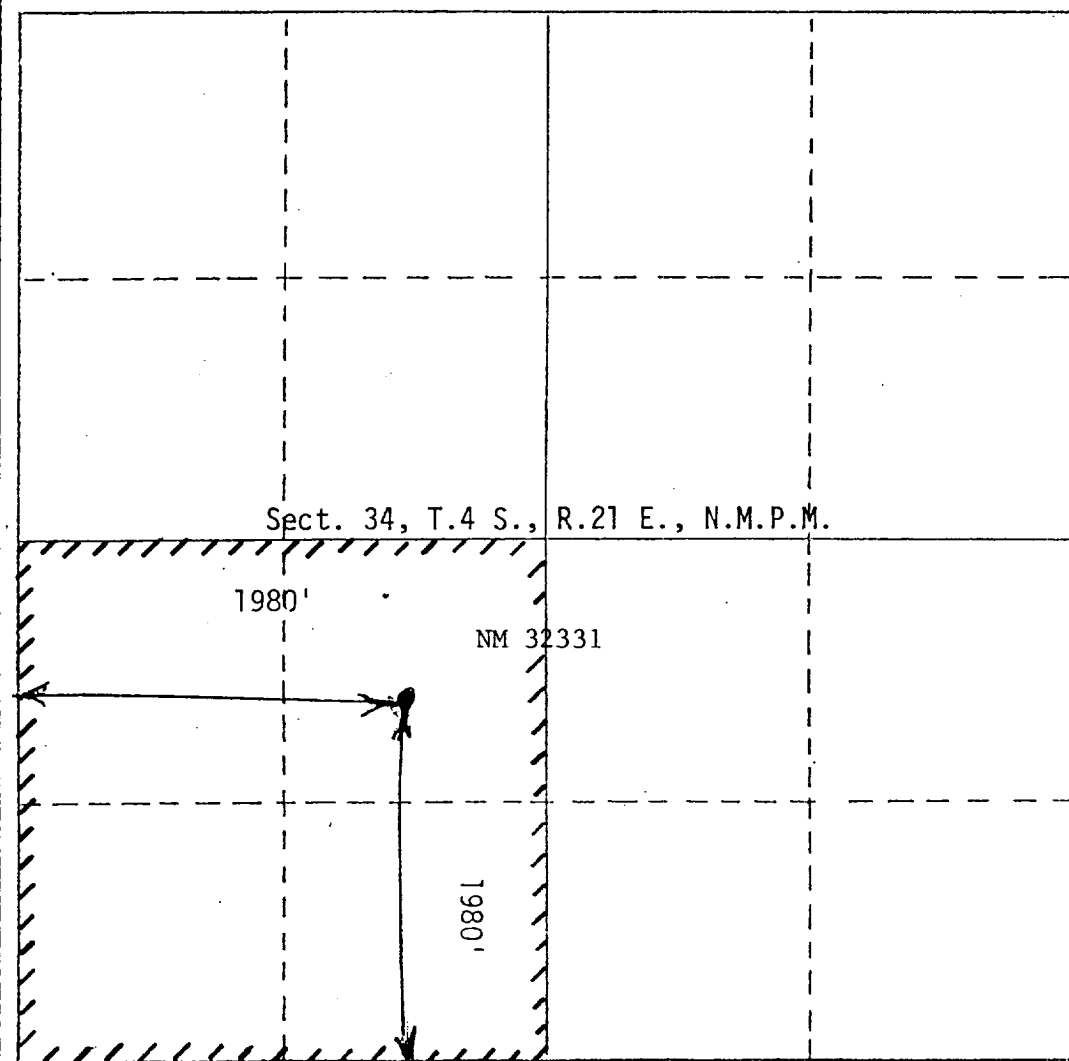
Operator Transwestern Gas Supply Co.		Lease Lewis Ranch Federal		Well No. 1
Unit Letter K	Section 34	Township 4 South	Range 21 East	County Chaves
Actual Footage Location of Well: 1980 feet from the South line and 1980 feet from the West line				
Ground Level Elev. 4522	Producing Formation Abo	Pool Wildcat	Dedicated Acreage: 160 Acre	

1. Outline the acreage dedicated to the subject well by colored pencil or hatchure marks on the plat below.
2. If more than one lease is dedicated to the well, outline each and identify the ownership thereof (both as to working interest and royalty). SINGLE LEASE
3. If more than one lease of different ownership is dedicated to the well, have the interests of all owners been consolidated by communitization, unitization, force-pooling, etc?

☐ Yes ☐ No If answer is "yes," type of consolidation _____

If answer is "no," list the owners and tract descriptions which have actually been consolidated. (Use reverse side of this form if necessary.) _____

No allowable will be assigned to the well until all interests have been consolidated (by communitization, unitization forced-pooling, or otherwise) or until a non-standard unit, eliminating such interests, has been approved by the Division



CERTIFICATION

I hereby certify that the information contained herein is true and complete to the best of my knowledge and belief.

Jerry W. Long
(Name)
JERRY W. LONG

Position
Agent

Company
TRANSWESTERN GAS SUPPLY CO.

Date
December 23, 1982

I hereby certify that the well location shown on this plat was plotted from field notes of actual surveys made by me or under my supervision, and that the same is true and correct to the best of my knowledge and belief.

Date Surveyed
December 10, 1982

Registered Professional Engineer and Land Surveyor
Thomas T. Mann
Thomas T. Mann, P.E. & L.S.

Certificate No.
277

SUPPLEMENTAL DRILLING DATA

TRANSWESTERN GAS SUPPLY COMPANY
No.1 Lewis Ranch Federal
NE $\frac{1}{4}$ SW $\frac{1}{4}$ Sec.34-4S-21E
Chaves County, N.M.

NM 32331

The following items supplement Form 9-331C in accordance with instructions contained in NTL-6.

1. SURFACE FORMATION: San Andres
2. ESTIMATED TOPS OF GEOLOGIC MARKER:

Glorietta	760'	Abo	2835'
Tubb	2234'		
3. ESTIMATED DEPTHS TO WATER, OIL OR GAS FORMATION:

Fresh Water	-	Surface to 1200'
Gas	-	3000' to 3800'
4. PROPOSED CASING PROGRAM: See Item #23 of Form 9-331C
5. PRESSURE CONTROL EQUIPMENT: Blowout preventer stack will consist of at least a double-ram blowout preventer rated to 3000# W.P. A diagrammatic sketch of the BOP is attached as Exhibit "D".
6. CIRCULATING MEDIUM: Hole for 13-3/8" conductor pipe will be drilled with a rat hole auger. Mud will be used as the circulating medium for the remainder of the drilling. Appropriate additives will be used in the mud system.
7. AUXILIARY EQUIPMENT: Full-opening kelly cock, to fit the drill string in use, will be kept on the rig floor at all times.
8. TESTING, LOGGING AND CORING PROGRAM:

Samples:	Surface casing shoe to TD
DST:	None anticipated
Logging:	Gamma Ray-Neutron log and other logs as recommended by well-site geologist.
Coring:	None anticipated

R. 21 E.

TRANSWESTERN GAS SUPPLY COMPANY
No.1 Lewis Ranch Federal
NE $\frac{1}{4}$ SW $\frac{1}{4}$ Sec.34-4S-21E
Chaves County, N.M.

R. 23 E.

ROSWELL

DISTRICT 6

DeBACA
CHAVES

Arroyo

Igneo

COUNTY ROAD

NEW
ROAD

ROSWELL
38 Mi.

TWGS
ANTELOPE WELLS

CALICHE
PIT

WATER
SOURCE

No.1 ARROYA STATE

HWY. 285

R. 21 E.

R. 22 E.

R. 22 E.

R. 23 E.

R. 23 E.

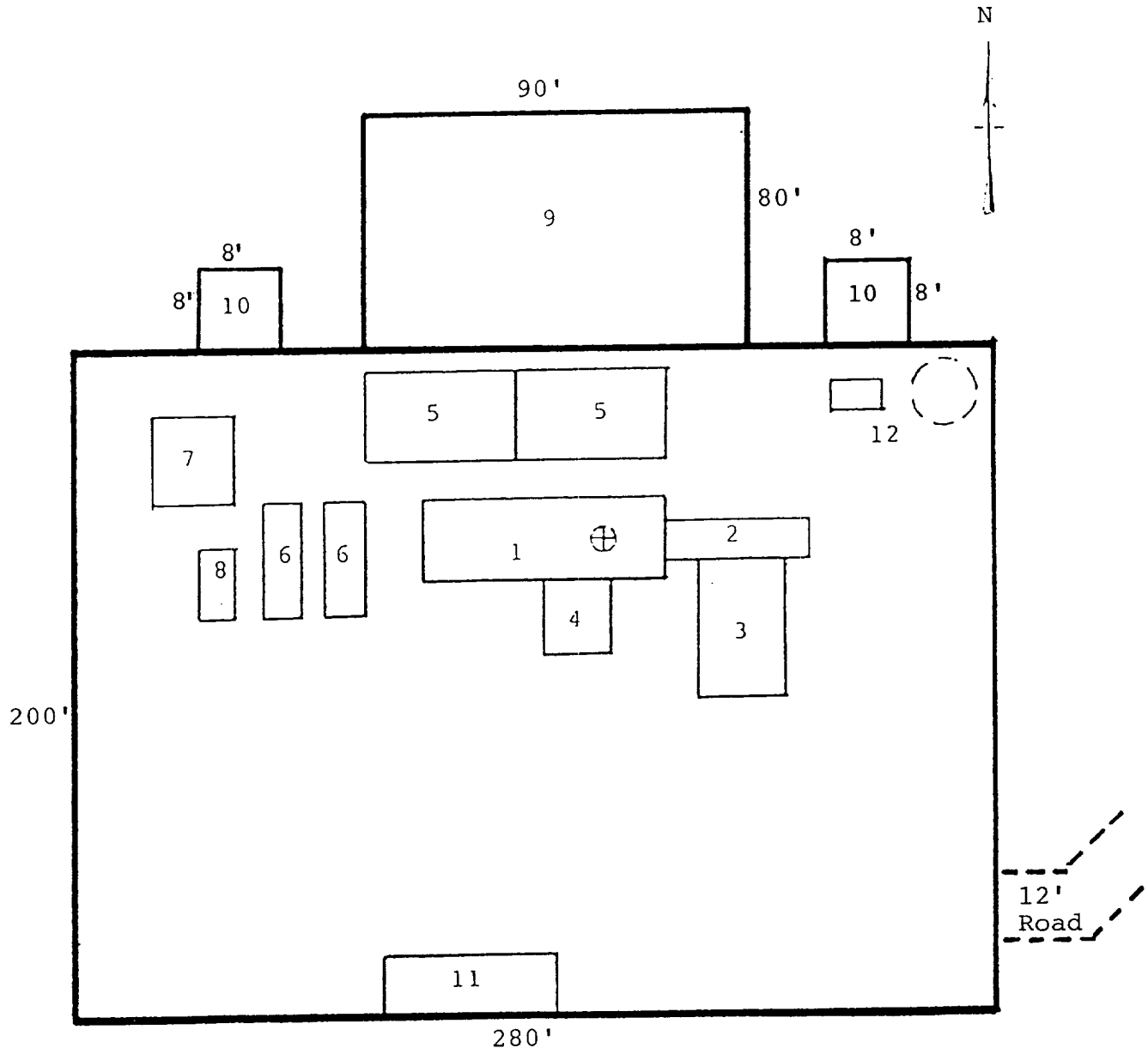
EXHIBIT A
ROAD MAP

1 Mile

SE-7

TRANSWESTERN GAS SUPPLY COMPANY
 No.1 Lewis Ranch Federal
 NE¼SW¼ Sec.34-4S-21E
 Chaves County, N.M.

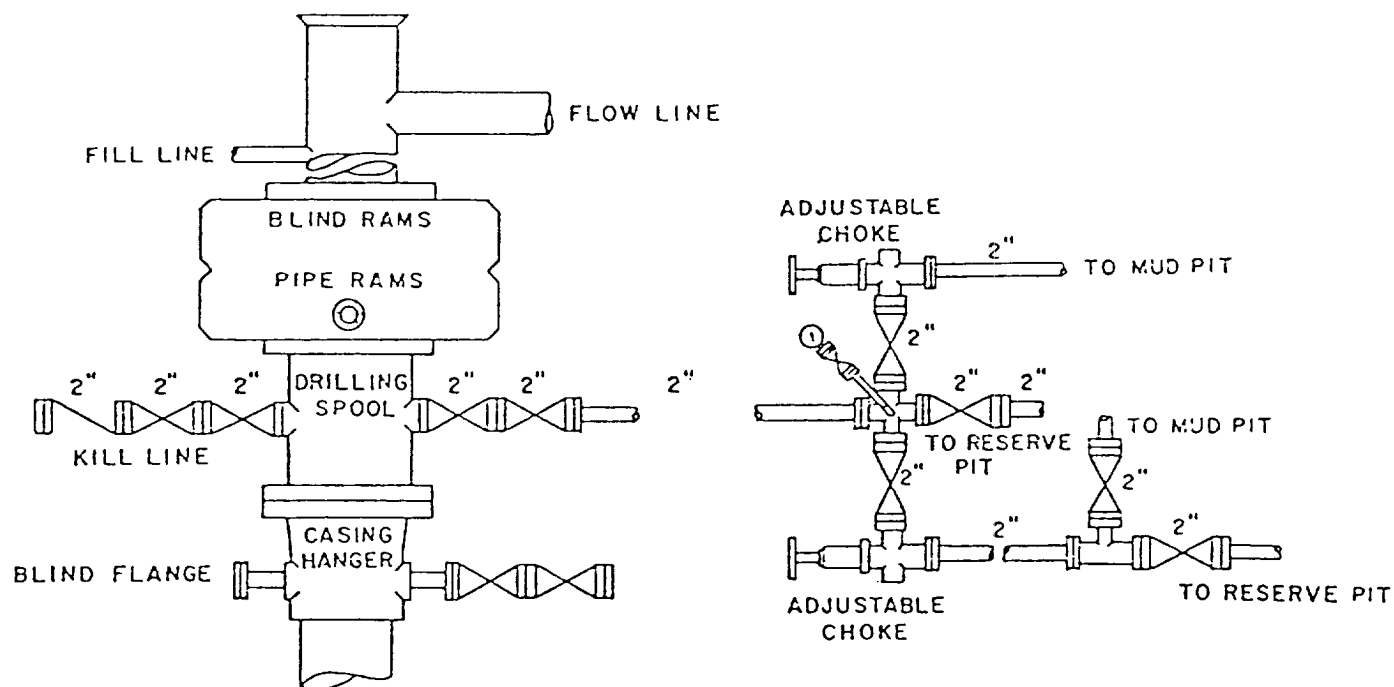
NM 32331



RIG LAYOUT

- | | |
|-----------------|---------------------------|
| 1. Substructure | 7. Water Tank |
| 2. Catwalk | 8. Light Plant |
| 3. Pipe Rack | 9. Reserve Pit |
| 4. Doghouse | 10. Trash Pit |
| 5. Mud Pits | 11. Trailer House |
| 6. Mud Pumps | 12. Production Facilities |

TRANSWESTERN GAS SUPPLY COMPANY
No.1 Lewis Ranch Federal
NE $\frac{1}{4}$ SW $\frac{1}{4}$ Sec.34-4S-21E
Chaves County, N.M.



BOP DIAGRAM

3000# Working Pressure
(Rams Operated Daily)