

30-005-61904

NO. OF COPIES RECEIVED	
DISTRIBUTION	
SANTA FE	✓
FILE	✓
U.S.G.S.	2
LAND OFFICE	✓
OPERATOR	✓

NEW MEXICO OIL CONSERVATION COMMISSION

RECEIVED

Form O-101
Revised 10-66

JAN 10 1983

O. C. D.

ARTESIA OFFICE

APPLICATION FOR PERMIT TO DRILL, DEEPEN, OR PLUG BACK

1a. Type of work DRILL <input checked="" type="checkbox"/> DEEPEN <input type="checkbox"/> PLUG BACK <input type="checkbox"/>		1b. Type of Well OIL <input checked="" type="checkbox"/> GAS <input type="checkbox"/> OTHER <input type="checkbox"/>		1c. Name of Lease Plains 29	
2. Name of Operator Cibola Energy Corporation		3. Address of Operator P.O. Box 1668, Albuquerque, New Mexico 87103		4. Well No. 4	
4. Location of Well UNIT LETTER D LOCATED 990 FEET FROM THE North LINE ANT 330 FEET FROM THE West LINE OF SEC. 29 TAP. 10S SEC. 28E NADOM		5. Name of Landowner Chaves		6. Name of Lease Race Track San Andres	
7. Elevation of Well (feet, etc.) 3732.8		8. Kind & Status of Lease Statewide		9. Drilling Contractor Comanche Drilling	
10. Approx. Date Well will be Drilled 2300'		11. Name of Lease San Andres		12. Approx. Date Well will be Drilled 0-300 CT 300-TD RT	

22. PROPOSED CASING AND CEMENT PROGRAM

SIZE OF HOLE	SIZE OF CASING	WEIGHT PER FOOT	SETTING DEPTH	SACKS OF CEMENT	EST. TOP
10"	8 5/8"	23#	300'	200 sacks	surface
7 7/8"	4 1/2"	9.5#	2300'	300 sacks	

CABLE TOOL

We plan to drill a 10" hole to 300' and set 8 5/8" 23# casing, a texas pattern guide shoe and insert float. Cementing with 200 sacks Class C Cement. WOC 18 hours.

ROTARY TOOL

Then drill an 7 7/8" hole to TD (2300'). Casing and cement program will be decided after reviewing the logs.

APPROVAL FOR 45 DAYS
JAN 11 1983
C. J. WILSON UNDERWAY

IN ABOVE SPACE DESCRIBE PROPOSED PROGRAM: IF PROPOSAL IS TO DEEPEN OR PLUG BACK, GIVE DATA ON PRESENT PRODUCTIVE ZONE AND PROPOSED NEW PRODUCTIVE ZONE. GIVE CEMENT PREVENTER PROGRAM, IF ANY.

I hereby certify that the information above is true and complete to the best of my knowledge and belief.

Signed Quinta Vigil Title Drilling Secretary Date January 7, 1983

(This space for State Use)

APPROVED BY Mike Williams TITLE OIL AND GAS INSPECTOR DATE JAN 11 1983

CONDITIONS OF APPROVAL, IF ANY:

NEW MEXICO OIL CONSERVATION COMMISSION
WELL LOCATION AND ACREAGE DEDICATION PLAT

Form C-102
Supersedes C-128
Effective 1-1-65

All distances must be from the outer boundaries of the Section

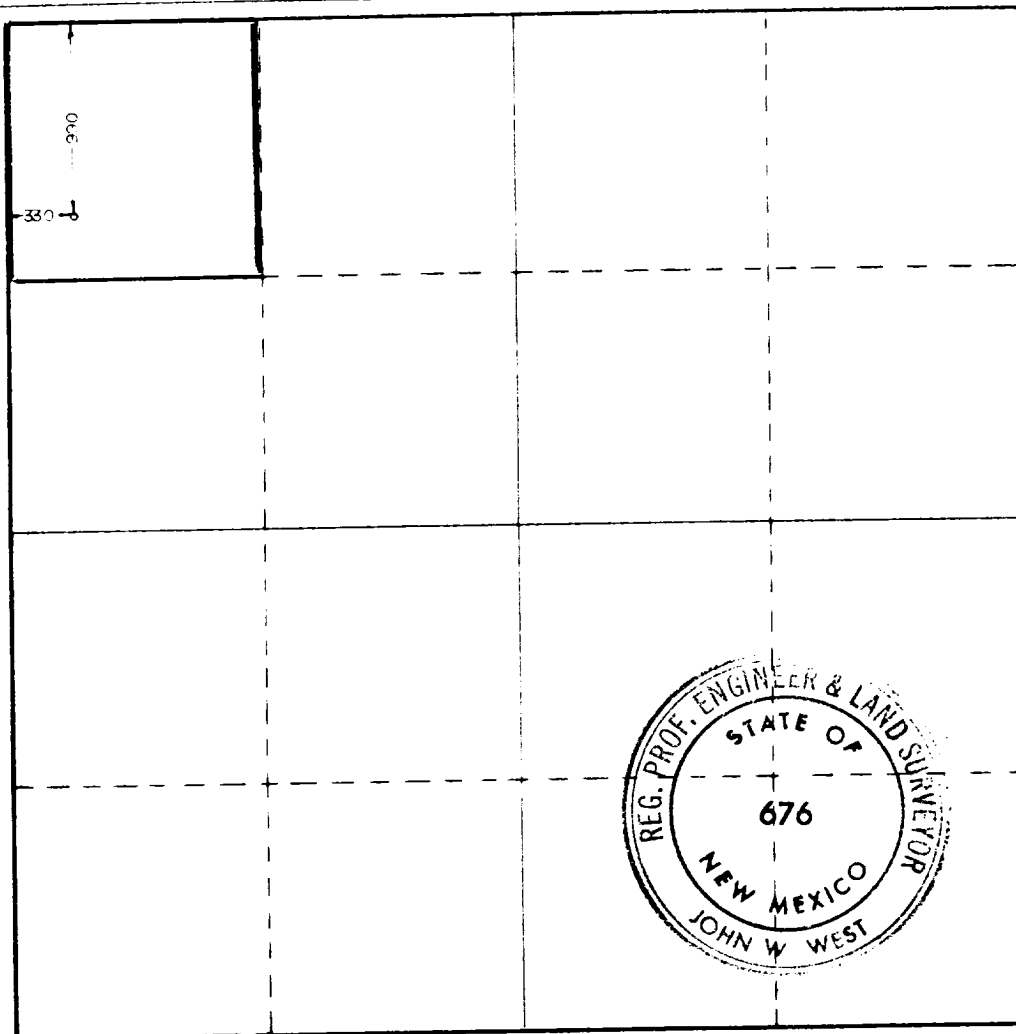
Operator CIBOLA ENERGY CORP.		Lease PLAINS 29		Well No. 4
Unit Letter D	Section 29	Township 10 SOUTH	Range 28 EAST	County CHAVES
Actual Footage Location of Well: 990 feet from the NORTH line and 330 feet from the WEST line				
Ground Level Elev. 3732.8	Producing Formation Slaughter San Andres		Pool Unit Race Track San Andres	Dedicated Acreage: 40 Acres

1. Outline the acreage dedicated to the subject well by colored pencil or hachure marks on the plat below.
2. If more than one lease is dedicated to the well, outline each and identify the ownership thereof (both as to working interest and royalty).
3. If more than one lease of different ownership is dedicated to the well, have the interests of all owners been consolidated by communitization, unitization, force-pooling, etc?

☐ Yes ☒ No If answer is "yes," type of consolidation _____

If answer is "no," list the owners and tract descriptions which have actually been consolidated. (Use reverse side of this form if necessary.) All leases held by operator and participating parties

No allowable will be assigned to the well until all interests have been consolidated (by communitization, unitization, forced-pooling, or otherwise) or until a non-standard unit, eliminating such interests, has been approved by the Commission.



CERTIFICATION

I hereby certify that the information contained herein is true and complete to the best of my knowledge and belief.

Anita Vigil
Name

Anita Vigil

Position

Drilling Secretary

Company

Cibola Energy Corporation

Date

January 7, 1983

I hereby certify that the well location shown on this plat was plotted from field notes of actual surveys made by me or under my supervision, and that the same is true and correct to the best of my knowledge and belief.

Date Surveyed

1/05/83

Registered Professional Engineer and/or Land Surveyor

John W. West
Certificate No.

JOHN W. WEST NO. 676

0 330 660 990 1320 1650 1980 2310 2640 2000 1500 1000 500