

ckf

UNITED STATES
DEPARTMENT OF THE INTERIOR
GEOLOGICAL SURVEY

APPLICATION FOR PERMIT TO DRILL, DEEPEN, OR PLUG BACK

1a. TYPE OF WORK

DRILL ☒

DEEPEN ☐

PLUG BACK ☐

RECEIVED

b. TYPE OF WELL

OIL
WELL ☐

GAS
WELL ☒

OTHER ☐

SINGLE
ZONE ☒

MULTIPLE
ZONE ☐

2. NAME OF OPERATOR

McKAY OIL CORPORATION ✓

JAN 14 1983

3. ADDRESS OF OPERATOR

P. O. BOX 2014, ROSWELL, NEW MEXICO 88202

O. C. D.
ARTESIA OFFICE

4. LOCATION OF WELL (Report location clearly and in accordance with any State requirements.)*

At surface

1980' FWL 1960' FNL

At proposed prod. zone

same

14. DISTANCE IN MILES AND DIRECTION FROM NEAREST TOWN OR POST OFFICE*

14 Miles Northwest of Roswell, New Mexico

15. DISTANCE FROM PROPOSED*

LOCATION TO NEAREST
PROPERTY OR LEASE LINE, FT.

1980'

16. NO. OF ACRES IN LEASE

2560

17. NO. OF ACRES ASSIGNED
TO THIS WELL

160

18. DISTANCE FROM PROPOSED LOCATION*

TO NEAREST WELL, DRILLING, COMPLETED,
OR APPLIED FOR, ON THIS LEASE, FT.

3/4 mile

19. PROPOSED DEPTH

3500'

20. ROTARY OR CABLE TOOLS

Rotary

21. ELEVATIONS (Show whether DF, RT, GR, etc.)

4101 GL

22. APPROX. DATE WORK WILL START*

ASAP

23. PROPOSED CASING AND CEMENTING PROGRAM

SIZE OF HOLE	SIZE OF CASING	WEIGHT PER FOOT	SETTING DEPTH	QUANTITY OF CEMENT
12 1/4"	8 5/8"	24# J55	1425' +	Circulate to surface
7 7/8"	4 1/2"	10.5# J55	3500' -	300 sx
				to isolate water, oil & gas

Propose to drill 12 1/4" hole to approximately 1425'. Set 8 5/8" surface casing and cement to surface. Install ram type BOP. Test BOP and casing to 1200 psi. Drill 7 7/8" hole to Abo objective. Run 4 1/2" production casing and cement with sufficient cement to isolate fresh water from oil or gas zones. Complete by perforating and stimulating favorable intervals.

Gas is not dedicated.

IN ABOVE SPACE DESCRIBE PROPOSED PROGRAM: If proposal is to deepen or plug back, give data on present productive zone and proposed new productive zone. If proposal is to drill or deepen directionally, give pertinent data on subsurface locations and measured and true vertical depths. Give blowout preventer program, if any.

24.

SIGNED James L. Schultz

Agent

DATE 1-3-83

(This space for Federal or State office use)

APPROVED

(ORIG. SGD.) DAVID R. GLASS

JAN 13 1983

JAMES A. GILLHAM
DISTRICT SUPERVISOR

APPROVAL DATE

RECEIVED
JAN 3 1983

OIL & GAS
U.S. GEOLOGICAL SURVEY
ROSWELL, NEW MEXICO

Post #D-1
1-21-83
New Mexico & APF

All distances must be from the outer boundaries of the section.

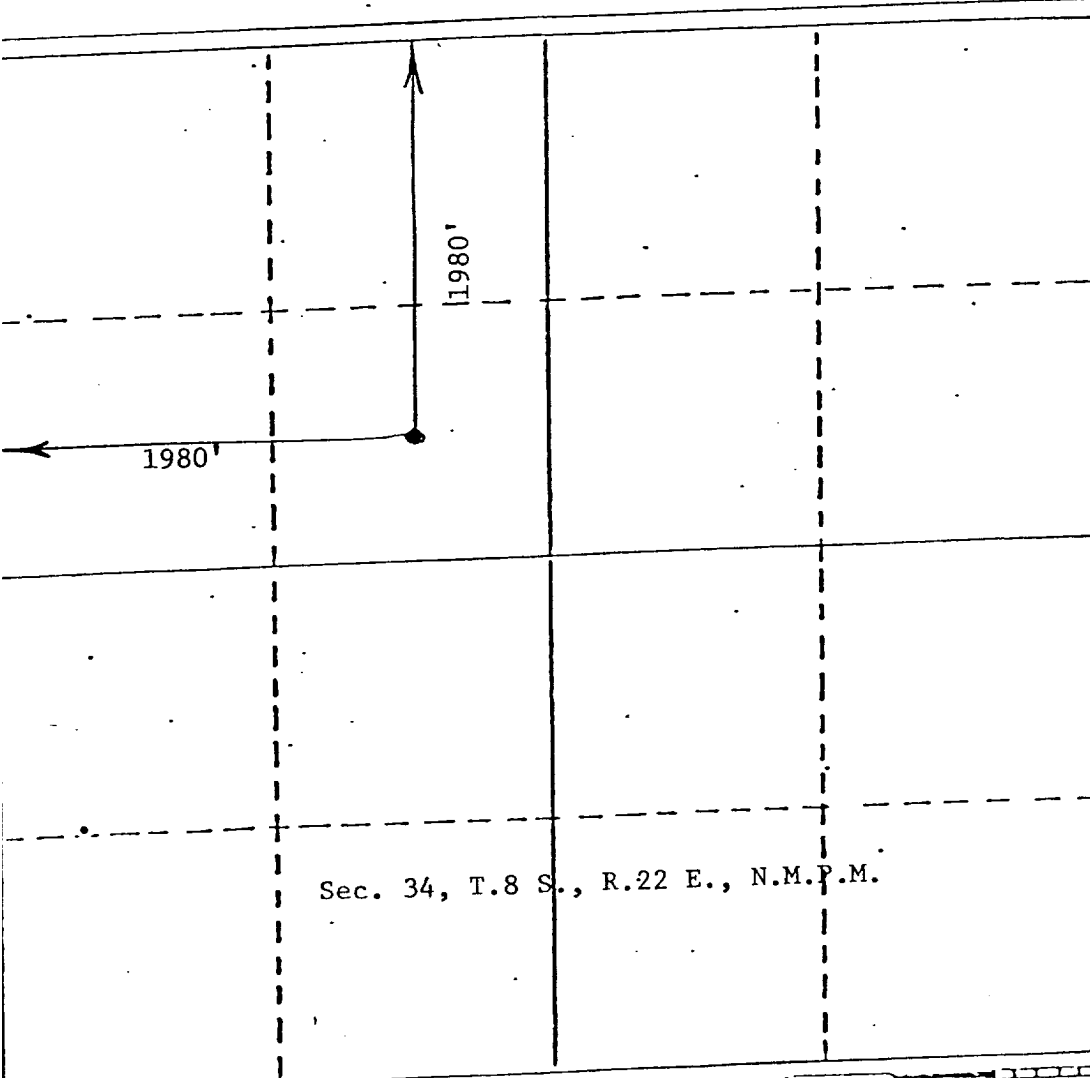
McKay Oil Corp.		Lease April Federal		Well No. #4
Section 34	Township 8 South	Range 22 East	County Chaves	
Well Location Location of Well: 1980	North line and 1980 feet from the West line			
Sound Level Elev. 4101	Producing Formation <i>Alto</i>	Pool <i>Und. W. Perm. Stage Alto</i>	Dedicated Acreage: 160	Acre

1. Outline the acreage dedicated to the subject well by colored pencil or hatchure marks on the plat below.
2. If more than one lease is dedicated to the well, outline each and identify the ownership thereof (both as to working interest and royalty).
3. If more than one lease of different ownership is dedicated to the well, have the interests of all owners been consolidated by communitization, unitization, force-pooling, etc?

☐ Yes ☐ No If answer is "yes," type of consolidation _____

If answer is "no," list the owners and tract descriptions which have actually been consolidated. (Use reverse side of this form if necessary.) _____

No allowable will be assigned to the well until all interests have been consolidated (by communitization, unitization, forced-pooling, or otherwise) or until a non-standard unit, eliminating such interests, has been approved by the Division.



CERTIFICATION

I hereby certify that the information contained herein is true and complete to the best of my knowledge and belief.

James L. Schultz
Name James L. Schultz

Position Agent

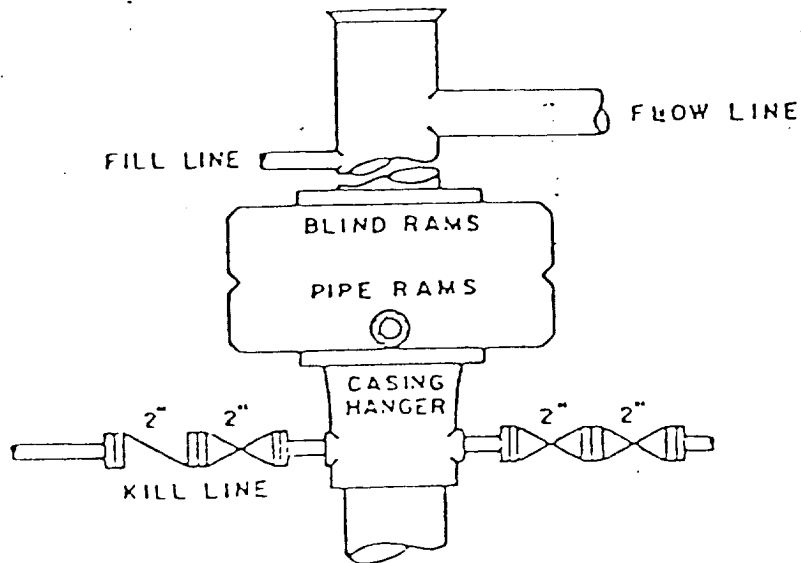
Company McKay Oil Corp.

Date 12-29-82

I hereby certify that the well location shown on this plat was plotted from field notes of actual surveys made by me or under my supervision, and that the same is true and correct to the best of my knowledge and belief.

John D. Jaquess
JOHN D. JAQUESS
NEW MEXICO
Date Surveyed December 29, 1982
Professional Engineer
and Certified Surveyor
John D. Jaquess, P.E. & L.S.
Certificate No. 6290

McKAY OIL CORPORATION
No. 4 April
SE $\frac{1}{4}$ NW $\frac{1}{4}$ Sec. 34-8S-22E
Chaves County, N.M.



BOP STACK

3000 PSI WORKING PRESSURE

SUPPLEMENTAL DRILLING DATA

McKAY OIL CORPORATION
No. 4 April
SE1/4NW1/4 Sec. 34-8S-22E
Chaves County, N.M.

NM 22059

The following items supplement Form 9-331C in accordance with instructions contained in NTL-6.

1. SURFACE FORMATION: San Andres
2. ESTIMATED TOPS OF GEOLOGIC MARKERS:

Glorieta	550'
Yeso	750'
Tubb	2000'
Abo	2550'
3. ESTIMATED DEPTHS TO WATER, OIL OR GAS FORMATION:

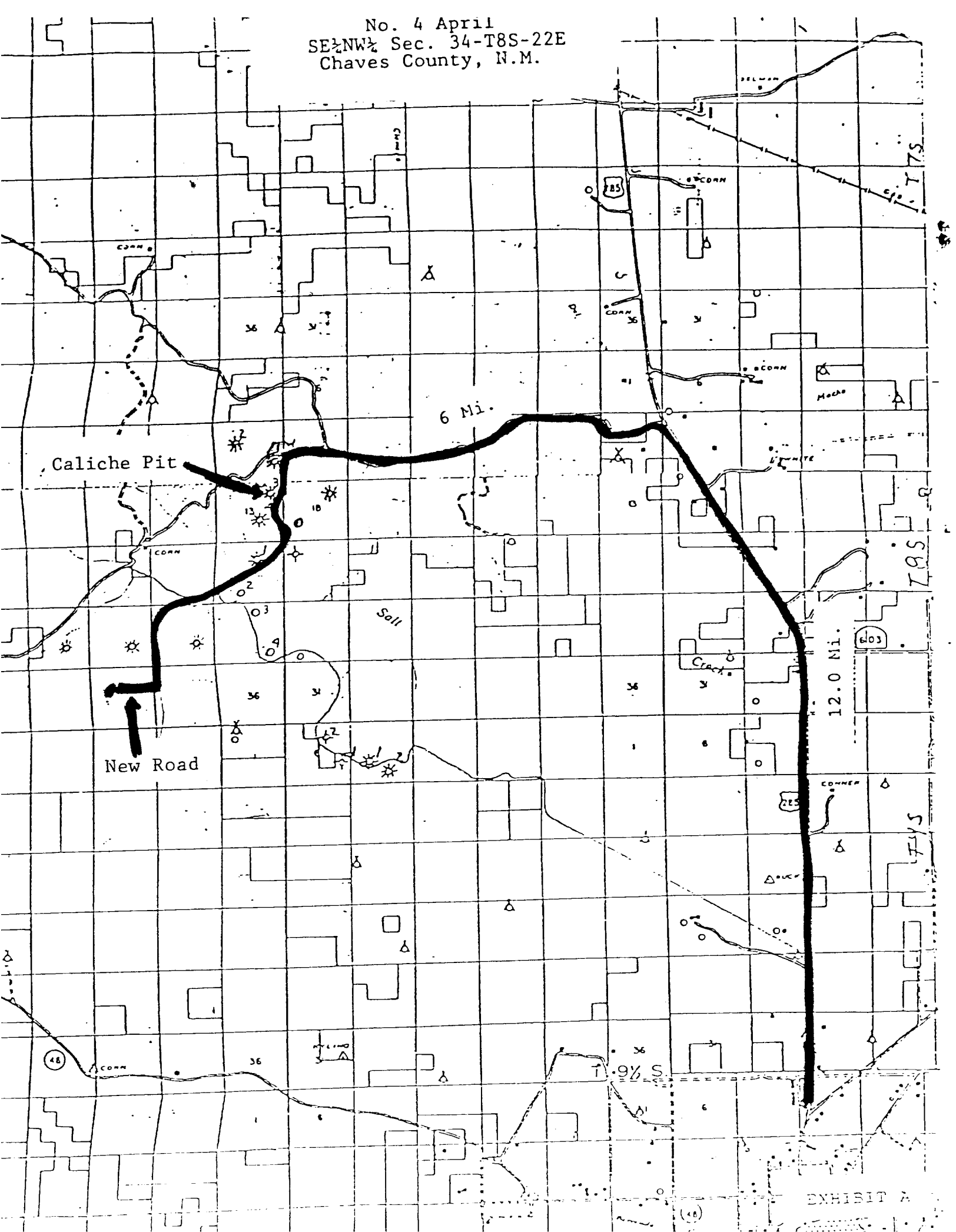
Fresh water	0'-1000'
Gas	2550'-3500'
4. PROPOSED CASING PROGRAM: See Form 9-331C
5. PRESSURE CONTROL EQUIPMENT: Blowout preventer stack will consist of at least a double-ram blowout preventer rated to 3000#WP. A sketch of the BOP is attached.
6. CIRCULATING MEDIUM:

0'-1000'	Fresh water native mud
1000'-1500'	Salt gel mud
1500'-TD	Salt gel and diesel

Mud additives will be used to control water loss.
7. AUXILIARY EQUIPMENT: full-opening kelly cock, to fit the drill string in use, will be kept on the rig floor at all times.
8. TESTING, LOGGING AND CORING PROGRAM:

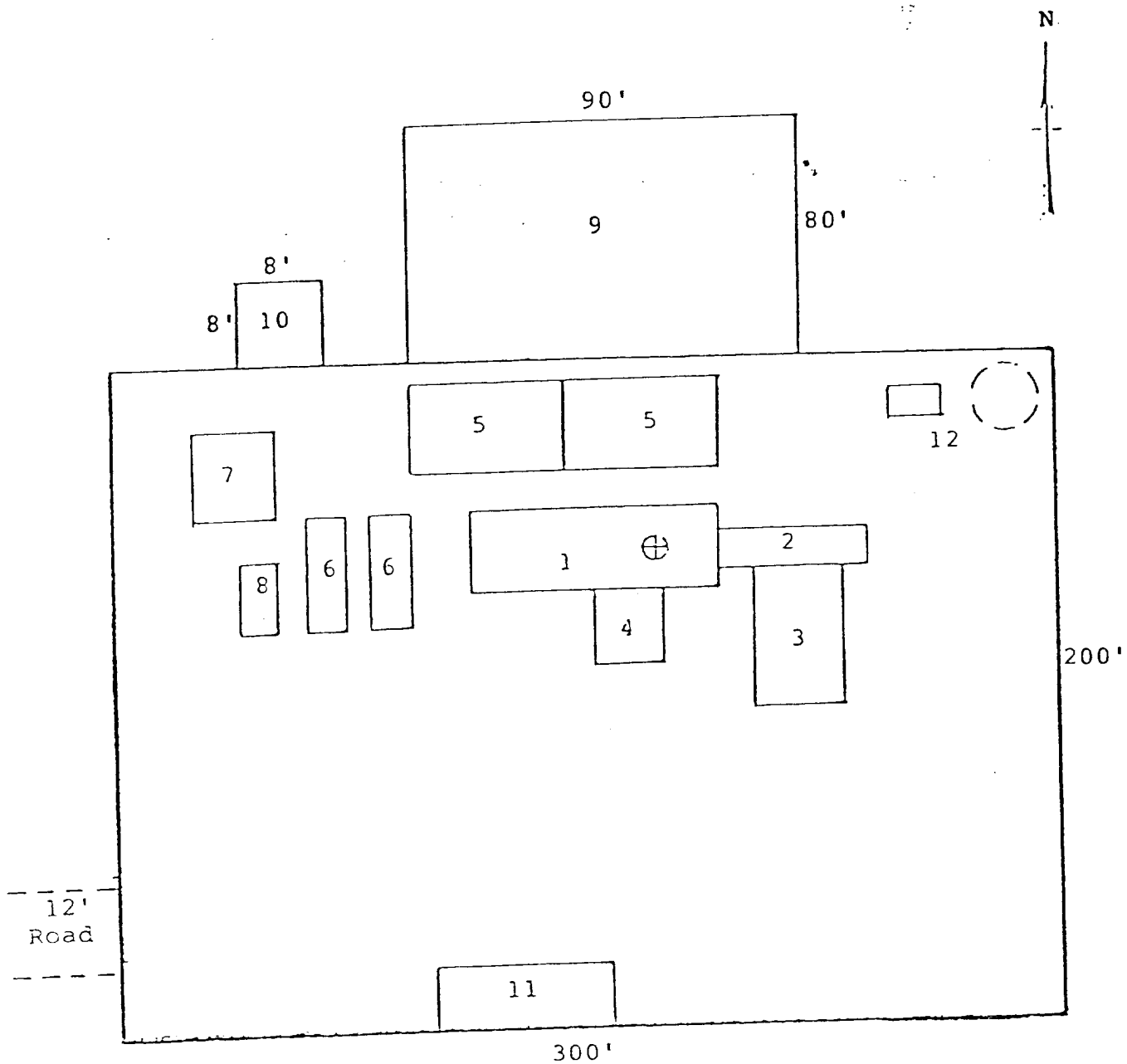
Samples:	Catch samples form surface to TD.
DST'S:	None
Logging:	GR-CNL from surface to TD.
Coring:	None

No. 4 April
SE¼NW¼ Sec. 34-T8S-22E
Chaves County, N.M.



McKAY OIL CORPORATION
 No. 4 April
 SE $\frac{1}{4}$ NW $\frac{1}{4}$ Sec. 34-8S-22E
 Chaves County, N.M.

NM 22059



RIG LAYOUT

- | | |
|-----------------|---------------------------|
| 1. Substructure | 7. Water Tank |
| 2. Catwalk | 8. Light Plant |
| 3. Pipe Rack | 9. Reserve Pit |
| 4. Doghouse | 10. Trash Pit |
| 5. Mud Pits | 11. Trailer House |
| 6. Mud Pumps | 12. Production Facilities |

EXHIBIT C