

UNITED STATES
DEPARTMENT OF THE INTERIOR

GEOLOGICAL SURVEY

APPLICATION FOR PERMIT TO DRILL, DEEPEN, OR PLUG BACK

1a. TYPE OF WORK

DRILL ☒DEEPEN ☐PLUG BACK ☐

b. TYPE OF WELL

OIL
WELL ☐GAS
WELL ☒

OTHER

SINGLE
ZONE ☒MULTIPLE
ZONE ☐

2. NAME OF OPERATOR

MESA PETROLEUM CO.

3. ADDRESS OF OPERATOR

P.O. Box 2009, Amarillo, Texas 79189

4. LOCATION OF WELL (Report location clearly and in accordance with any State requirements.)

At surface

1980' FNL & 660' FWL SW 1/4 NW 1/4

At proposed prod. zone

14. DISTANCE IN MILES AND DIRECTION FROM NEAREST TOWN OR POST OFFICE

27 MILES NORTHWEST FROM ROSWELL, NM

15. DISTANCE FROM PROPOSED*

LOCATION TO NEAREST
PROPERTY OR LEASE LINE, FT.
(Also to nearest drlg. unit line, if any)

660' / 660'

16. NO. OF ACRES IN LEASE

2209.13

17. NO. OF ACRES ASSIGNED
TO THIS WELL

160

18. DISTANCE FROM PROPOSED LOCATION*
TO NEAREST WELL, DRILLING, COMPLETED,
OR APPLIED FOR, ON THIS LEASE, FT.

5300'

19. PROPOSED DEPTH

3500'

20. ROTARY OR CABLE TOOLS

Rotary

21. ELEVATIONS (Show whether DF, RT, GR, etc.)

4103' GR

22. APPROX. DATE WORK WILL START*

February 1, 1983

23.

PROPOSED CASING AND CEMENTING PROGRAM

SIZE OF HOLE	SIZE OF CASING	WEIGHT PER FOOT	SETTING DEPTH	QUANTITY OF CEMENT
12 1/4"	8 5/8"	24#	1400'	700/300 SURFACE
7 7/8"	4 1/2"	10.5#	3500'	350 COVER ALL PAY

Propose to drill 12 1/4" hole to approximately 1400' to set 8 5/8" surface casing and cement to surface. Will nipple up ram type BOP's and reduce hole to 7 7/8" to drill to total depth. Drilling medium will be air, foam, or mud as required. After log evaluation, 4 1/2" casing may be run and cemented with sufficient kinds and amount to isolate and seal off any fresh water, oil or gas zones encountered.

Operator's Gas Sales are dedicated.

XC: ~~10-1~~ (0+6), CEN RCDS, ACCTG, MIDLAND, ROSWELL, OPS (FILE), PARTNERS

IN ABOVE SPACE DESCRIBE PROPOSED PROGRAM: If proposal is to deepen or plug back, give data on present productive zone and proposed new productive zone. If proposal is to drill or deepen directionally, give pertinent data on subsurface locations and measured and true vertical depths. Give blowout preventer program, if any.

24.

SIGNED

R. E. Machis

TITLE REGULATORY COORDINATOR

DATE 1-4-83

(This space for Federal or State office use)

PERMIT NO.

APPROVED

APPROVAL DATE

APPROVED BY
CONDITIONS OF

(ORIG. SGD.) DAVID R. GLASS

TITLE

DATE

JAN 11 1983

JAMES A. GILLHAM
DISTRICT SUPERVISOR

5. LEASE DESIGNATION AND SERIAL NO.

NM-36647

6. IF INDIAN, ALLOTTEE OR TRIBE NAME

7. UNIT AGREEMENT NAME

8. FARM OR LEASE NAME

MACHO FEDERAL

9. WELL NO.

13

10. FIELD AND POOL, OR WILDCAT

UNDES. W. PECOS SLOPE ABO

11. SEC., T., R., M., OR BLK.
AND SURVEY OR AREA

SEC 6, T7S, R23E

12. COUNTY OR PARISH

13. STATE

CHAVES

NEW MEXICO

All distances must be from the outer boundaries of the Section.

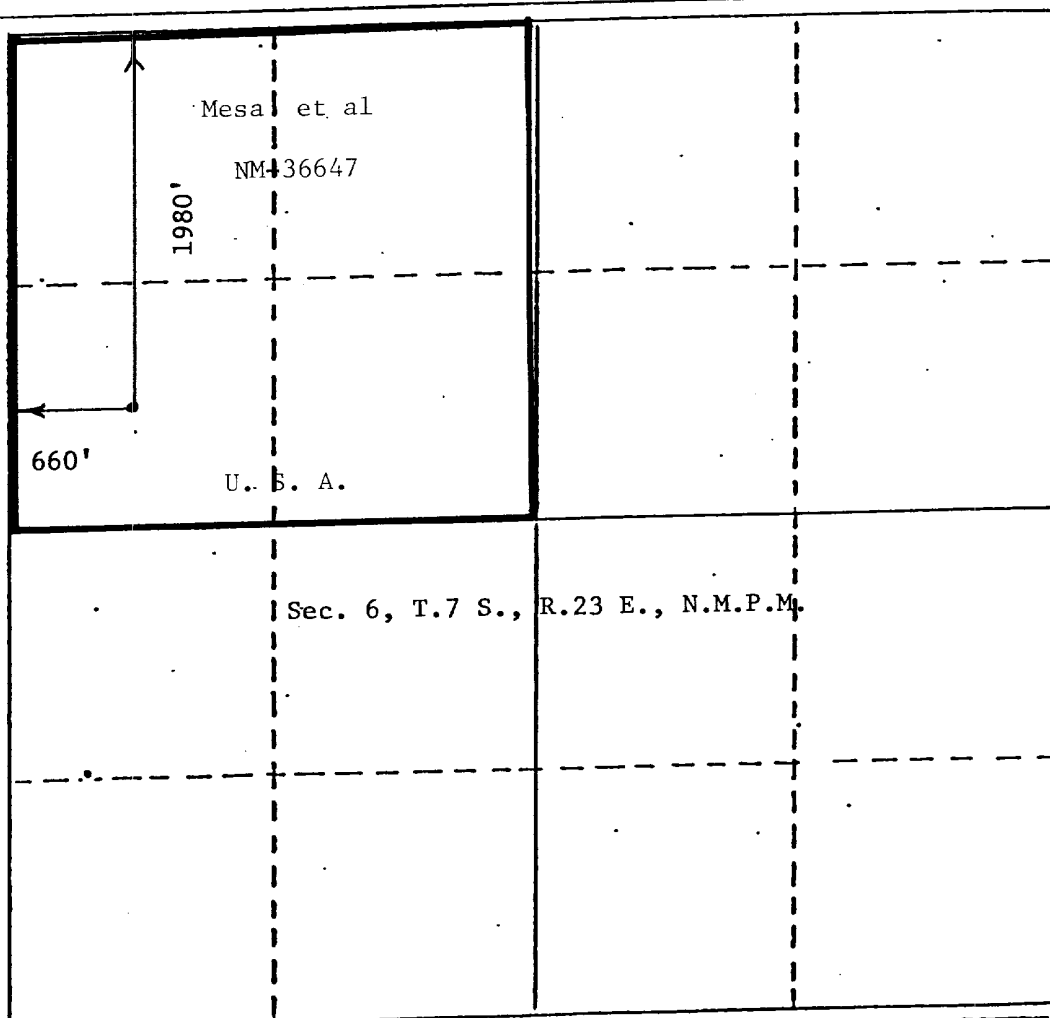
Operator Mesa Petroleum Co.			Lease Macho Federal		Well No. 13
Unit Letter E	Section 6	Township 7 South	Range 23 East	County Chaves	
Actual Postage Location of Well: 1980 feet from the North line and 660 feet from the West line					
Ground Level Elev. 4103	Producing Formation ABO		Pool Undes. West Pecos Slope ABO		Dedicated Acreage: NW/4 160 Acres

1. Outline the acreage dedicated to the subject well by colored pencil or hatchure marks on the plat below.
2. If more than one lease is dedicated to the well, outline each and identify the ownership thereof (both as to working interest and royalty).
3. If more than one lease of different ownership is dedicated to the well, have the interests of all owners been consolidated by communitization, unitization, force-pooling, etc?

☐ Yes ☐ No If answer is "yes," type of consolidation _____

If answer is "no," list the owners and tract descriptions which have actually been consolidated. (Use reverse side of this form if necessary.) _____

No allowable will be assigned to the well until all interests have been consolidated (by communitization, unitization, forced-pooling, or otherwise) or until a non-standard unit, eliminating such interests, has been approved by the Division.



CERTIFICATION

I hereby certify that the information contained herein is true and complete to the best of my knowledge and belief.

R. E. Mathis

Name

R. E. Mathis

Position

Regulatory Coordinator

Company

Mesa Petroleum Co.

Date

1-4-83

I hereby certify that the well location shown on this plat was plotted from field notes of actual surveys made by me or under my supervision, and that the same is true and correct to the best of my knowledge and belief.

JOHN D. JAQUES
NEW MEXICO

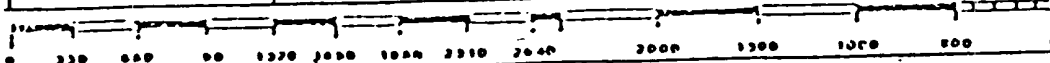
Date Surveyed
November 16, 1982

Registered Professional Engineer
and/or Surveyor

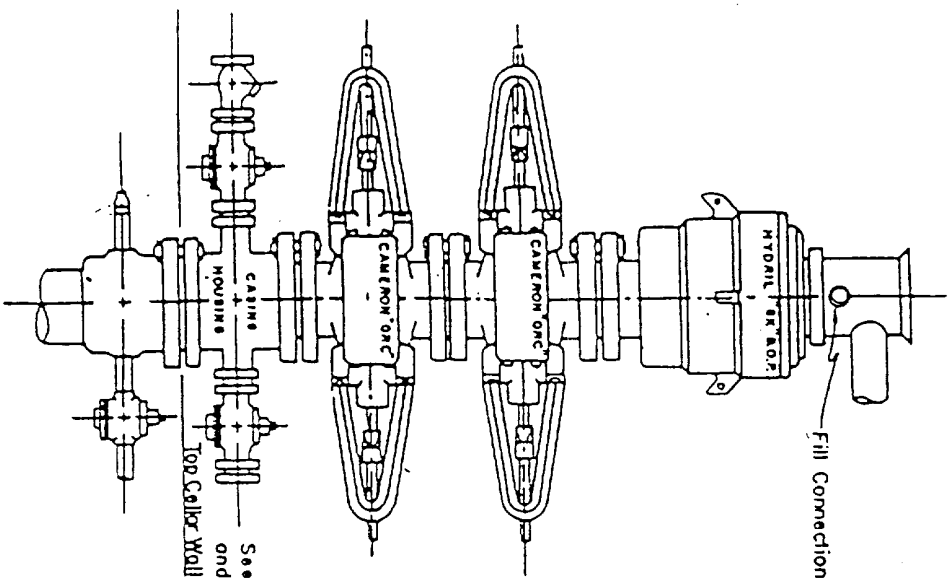
John D. Jaques, P.E. & L.S.

Certificate No.

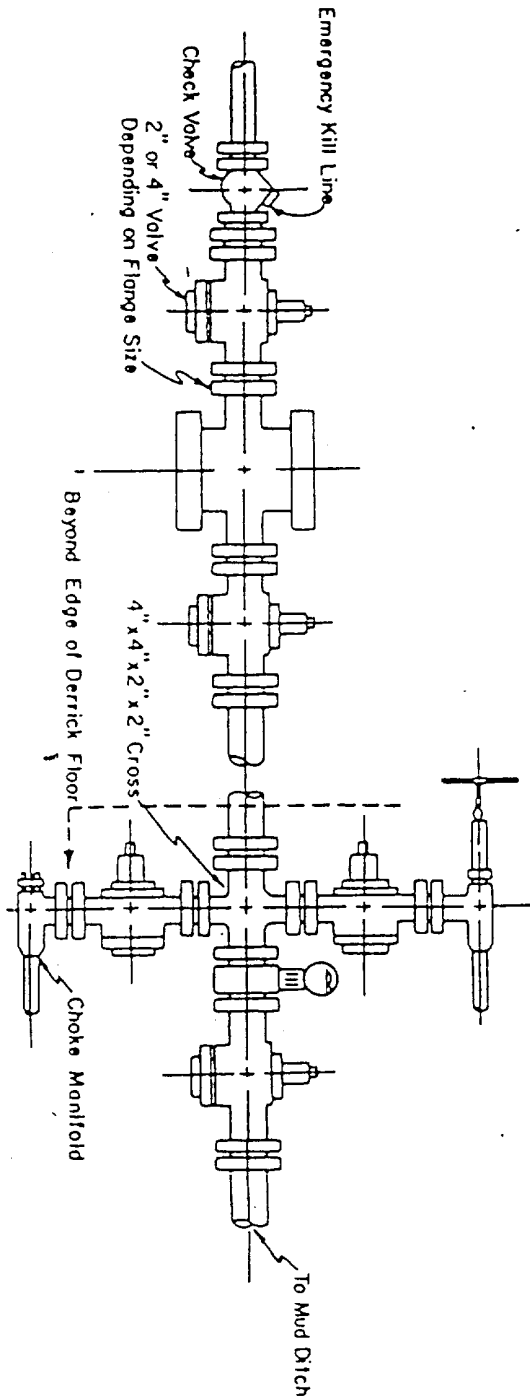
6290



Blow-out Preventers hydril and choke manifold are all 900 Series



3,000 PSI WORKING PRESSURE
BLOW-OUT PREVENTER HOOK-UP



3,000 PSI WORKING PRESSURE
KILL, CHOKE, AND FILL CONNECTIONS

DETAIL OF 4" FLOW LINE CHOKE ASSEMBLY
Minimum assembly for 3,000 PSI working pressure will consist of three preventers.
The bottom and middle preventers may be Cameron.

NOTE: HYDRIL not installed on shallow-low pressure wells.
RAM type BOPs are API 10" X 3000 PSI



MESA
PETROLEUM CO.
ONSHORE DIVISION

EXHIBIT VI

BY:	DRAWN BY:
DATE:	SCALE:

APPLICATION FOR PERMIT TO DRILL

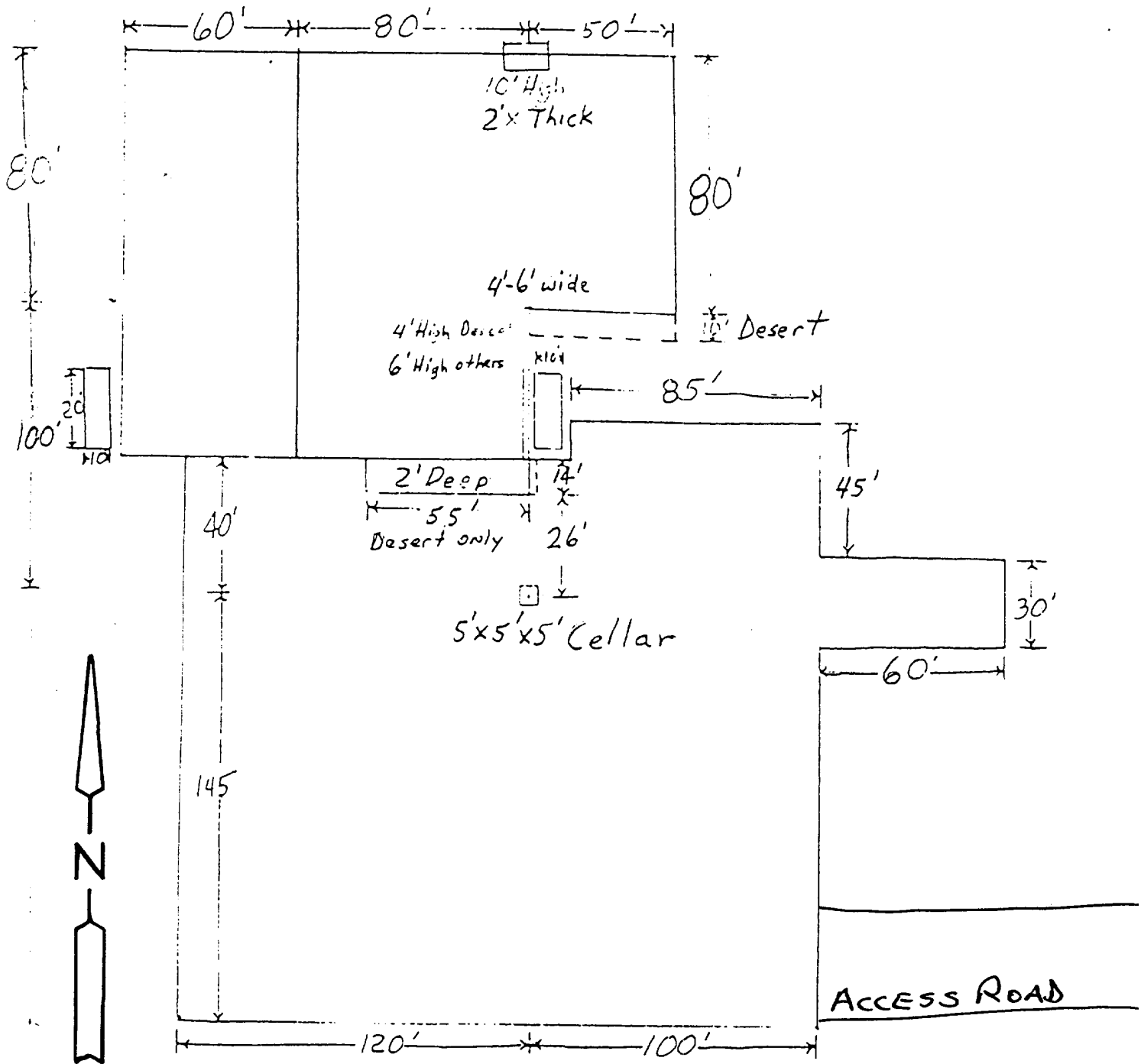
MESA PETROLEUM CO.
MACHO FEDERAL #13
1980' FNL & 660' FWL, SEC 6, T7S, R23E
CHAVES COUNTY, NEW MEXICO

LEASE NO. NM-36647

In conjunction with Form 9331-C, Application For Permit to Drill subject well, the following additional information is provided:

1. Applicable portions of the GENERAL REQUIREMENTS FOR OIL AND GAS OPERATIONS ON FEDERAL LEASES, Roswell District, Geological Survey of September 1, 1980 will be adhered to.
2. Geological markers are estimated as follows:

San Andres	Surface
Glorieta	690'
Tubb	2215'
ABO	2850'
3. Hydrocarbon bearing strata may occur in the ABO formation(s). No fresh water is expected to be encountered below 900'.
4. The Casing and Blowout Preventer Program will be determined by hole conditions as encountered. Anticipate drilling with air or foam using ram type preventer and rotating head for well control. The 8 5/8" casing will be set at approximately 1400' to protect any fresh water zones and cemented to the surface. The 4 1/2" production casing will be set at total depth or shallower depending upon the depth of the deepest commercial hydrocarbon bearing strata encountered. Sufficient amounts and kinds of cement would be used to ensure any water, gas, or oil zones encountered are isolated and shut off down to the casing point, if run.
5. No drill stem tests or coring program is planned. The logging program may consist of a GR-CNL from surface to total depth and FDC from casing point to total depth.
6. Anticipated drilling time is ten days with completion operations to follow as soon as completion unit is available.



6"-8" Watered & Compacted Caliche
ON PAD & ROAD IF NEEDED



MESA
PETROLEUM CO.
ONSHORE DIVISION

EXHIBIT V
FOR PROPOSED MACHO FEDERAL #13

BY:

DATE:

DRAWN BY:

SCALE: