

UNITED STATES  
DEPARTMENT OF THE INTERIOR  
GEOLOGICAL SURVEYSUBMIT IN TWO COPIES  
(Other instructions on  
reverse side)Form approved.  
Budget Bureau No. 42-R1425.

30-005-61916

C/S 7

## APPLICATION FOR PERMIT TO DRILL, DEEPEN, OR PLUG BACK

## 1a. TYPE OF WORK

DRILL ☒DEEPEN ☐PLUG BACK ☐

## b. TYPE OF WELL

OIL  
WELL ☐GAS  
WELL ☒OTHER ☐SINGLE  
ZONE ☐MULTIPLE  
ZONE ☐

## 2. NAME OF OPERATOR

Yates Petroleum Corporation

JAN 18 1983

## 3. ADDRESS OF OPERATOR

207 S. 4th, Artesia, New Mexico 88210 C.D.

## 4. LOCATION OF WELL (Report location clearly and in accordance with any State requirements)

At surface

1980' FSL and 1980' FWL

At proposed prod. zone  
same

## 14. DISTANCE IN MILES AND DIRECTION FROM NEAREST TOWN OR POST OFFICE\*

Approximately 25 miles NE of Roswell, New Mexico.

## 15. DISTANCE FROM PROPOSED\*

LOCATION TO NEAREST  
PROPERTY OR LEASE LINE, FT.  
(Also to nearest drlg. unit line, if any)

1980'

## 16. NO. OF ACRES IN LEASE

800

18. DISTANCE FROM PROPOSED LOCATION\*  
TO NEAREST WELL, DRILLING, COMPLETED,  
OR APPLIED FOR, ON THIS LEASE, FT.

## 19. PROPOSED DEPTH

4300'

## 21. ELEVATIONS (Show whether DF, RT, GR, etc.)

3649.1' GL

## 23.

## PROPOSED CASING AND CEMENTING PROGRAM

| SIZE OF HOLE | SIZE OF CASING | WEIGHT PER FOOT | SETTING DEPTH | QUANTITY OF CEMENT |
|--------------|----------------|-----------------|---------------|--------------------|
| 14 3/4"      | 10 3/4"        | 40.5# J-55      | 850'          | 650 sx circulated  |
| 7 7/8"       | 4 1/2"         | 9.5#            | TD            | 350 sx             |

We propose to drill and test the Abo and intermediate formations. Approximately 850' of surface casing will be set and cement circulated to shut off gravel and caving. If needed (lost circulation) 8 5/8" intermediate casing will be run to 1500' and cemented with enough cement calculated to tie back into the surface casing. If commercial, production casing will be run and cemented with adequate cover, perforated, and stimulated as needed for production.

MUD PROGRAM: FW gel/LCM to 850', Brine to 3200', Brine & KCL water to TD.

BOP PROGRAM: BOP's will be installed at the offset and tested daily.

GAS NOT DEDICATED.

IN ABOVE SPACE DESCRIBE PROPOSED PROGRAM: If proposal is to deepen or plug back, give data on present productive zone and proposed new productive zone. If proposal is to drill or deepen directionally give pertinent data on subsurface locations and measured and true vertical depths. Give blowout prevention program, if any.

## 24.

SIGNED

(This space for Federal or State office use)

(Orig. Sgd.) GEORGE H. STEWART

PERMIT NO.

JAN 14 1983

APPROVED BY

CONDITIONS OF

JAMES A. GILLHAM  
DISTRICT SUPERVISOR

TITLE Regulatory Coordinator DATE 12/17/82

APPROVAL DATE

TITLE

DATE

DEC 22 1982

OIL & GAS  
U.S. GEOLOGICAL SURVEY  
ROSWELL, NEW MEXICO

**NEW MEXICO OIL CONSERVATION COMMISSION  
WELL LOCATION AND ACREAGE DEDICATION PLAT**

Form C-102  
Supersedes C-128  
Effective 1-1-65

All distances must be from the outer boundaries of the Section.

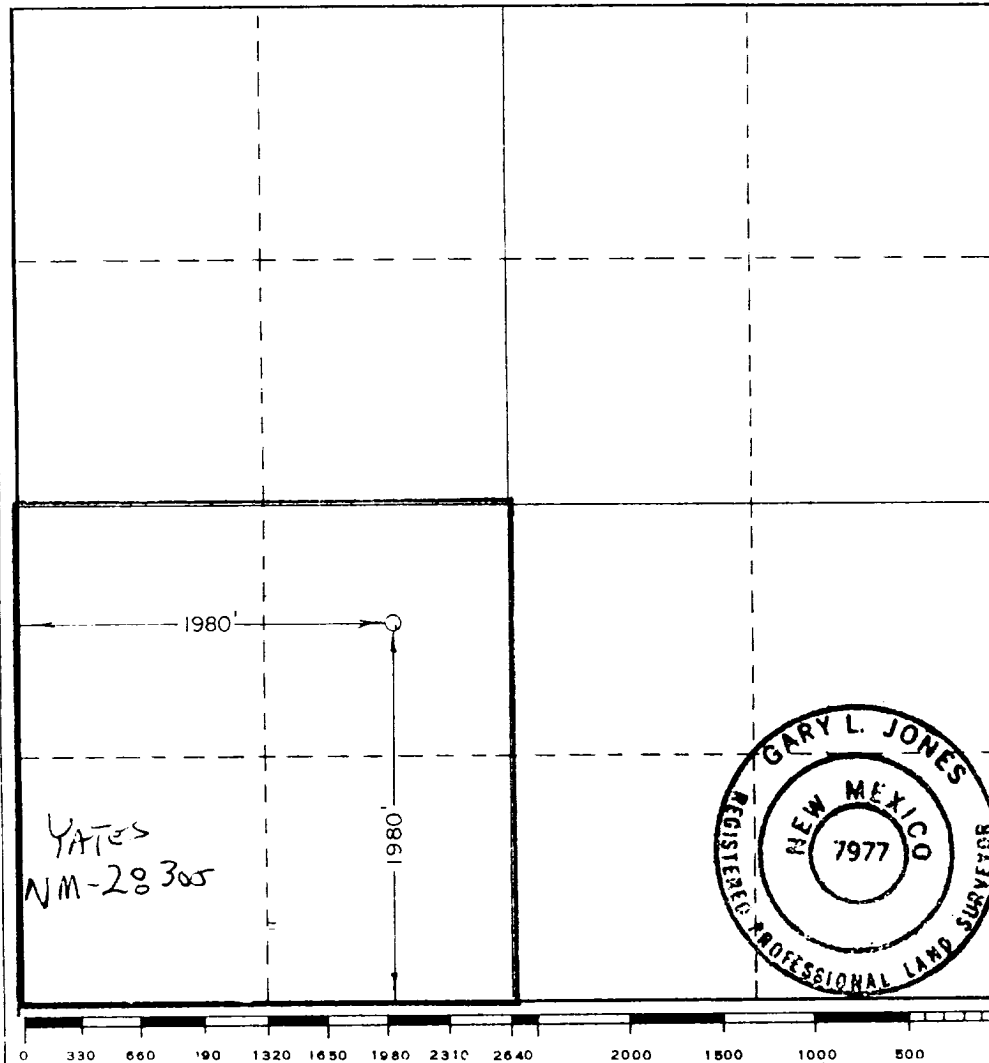
|   |                                   |  |  |                         |                      |
|---|-----------------------------------|--|--|-------------------------|----------------------|
| Operator<br><b>YATES PETROLEUM CORPORATION</b>  |                                   |  | Lease<br><b>Binnion "IT" Federal</b>   |                         | Well No.<br><b>2</b> |
| Unit Letter<br><b>K</b>                         | Section<br><b>24</b>              | Township<br><b>7 South</b>                 | Range<br><b>25 East</b>                | County<br><b>Chaves</b> |                      |
| Actual Eastern Location of Well:                |                                   |  |  |                         |                      |
| <b>1950</b> feet from the <b>South</b> line and |                                   | <b>1980</b> feet from the <b>West</b> line |  |                         |                      |
| Ground Level Elev.<br><b>3649.1'</b>            | Producing Formation<br><b>Abo</b> | Pool<br><b>Pecos Slope Abo</b>             | Dedicated Acreage:<br><b>160</b> Acres |                         |                      |

1. Outline the acreage dedicated to the subject well by colored pencil or hachure marks on the plat below.
2. If more than one lease is dedicated to the well, outline each and identify the ownership thereof (both as to working interest and royalty).
3. If more than one lease of different ownership is dedicated to the well, have the interests of all owners been consolidated by communitization, unitization, force-pooling, etc?

☐ Yes    ☐ No    If answer is "yes," type of consolidation \_\_\_\_\_

If answer is "no," list the owners and tract descriptions which have actually been consolidated. (Use reverse side of this form if necessary.) \_\_\_\_\_

No allowable will be assigned to the well until all interests have been consolidated (by communitization, unitization, forced-pooling, or otherwise) or until a non-standard unit, eliminating such interests, has been approved by the Commission.



**CERTIFICATION**

*I hereby certify that the information contained herein is true and complete to the best of my knowledge and belief.*

*[Signature]*  
Name

**Ken Beardemphl**  
Position

**Regulatory Coordinator**  
Company

**Yates Petroleum Corp.**  
Date

**12/21/82**

*I hereby certify that the well location shown on this plat was plotted from field notes of actual surveys made by me or under my supervision, and that the same is true and correct to the best of my knowledge and belief.*

Date Surveyed

**December 16, 1982**

Registered Professional Engineer  
and/or Land Surveyor

Certificate No.

**7977**

YATES PETROLEUM CORPORATION

Binnion "TT" Federal #2  
1980' FSL and 1980' FWL  
Sec. 24-T7S-R25E

In conjunction with Form 9-331C, Application for Permit to Drill subject well, Yates Petroleum Corporation submits the following ten items of pertinent information in accordance with USGS requirements.

1. The geologic surface formation is sandy alluvium.

2. The estimated tops of geologic markers are as follows:

|            |       |
|------------|-------|
| San Andres | 442'  |
| Glorieta   | 1543' |
| Fullerton  | 2973' |
| Abo        | 3634' |
| TD         | 4300' |

3. The estimated depths at which anticipated water, oil or gas formations are expected to be encountered:

Water: 150'-180'

Oil or Gas: Abo 3665'

4. Proposed Casing Program: See Form 9-331C.

5. Pressure Control Equipment: See Form 9-331C and Exhibit B.

6. Mud Program: See Form 9-331C.

7. Auxiliary Equipment: Kelly Cock; pit level indicators and flow sensor equipment;  
sub with full-opening valve on floor, drill pipe connection.

8. Testing, Logging and Coring Program:

Samples: Surface casing to TD.

DST's: As warranted.

Coring: None.

Logging: CNL-FDC TD to csg w/GR-CNL to surface & DLL from TD to csg.

9. No abnormal pressures or temperatures are anticipated.

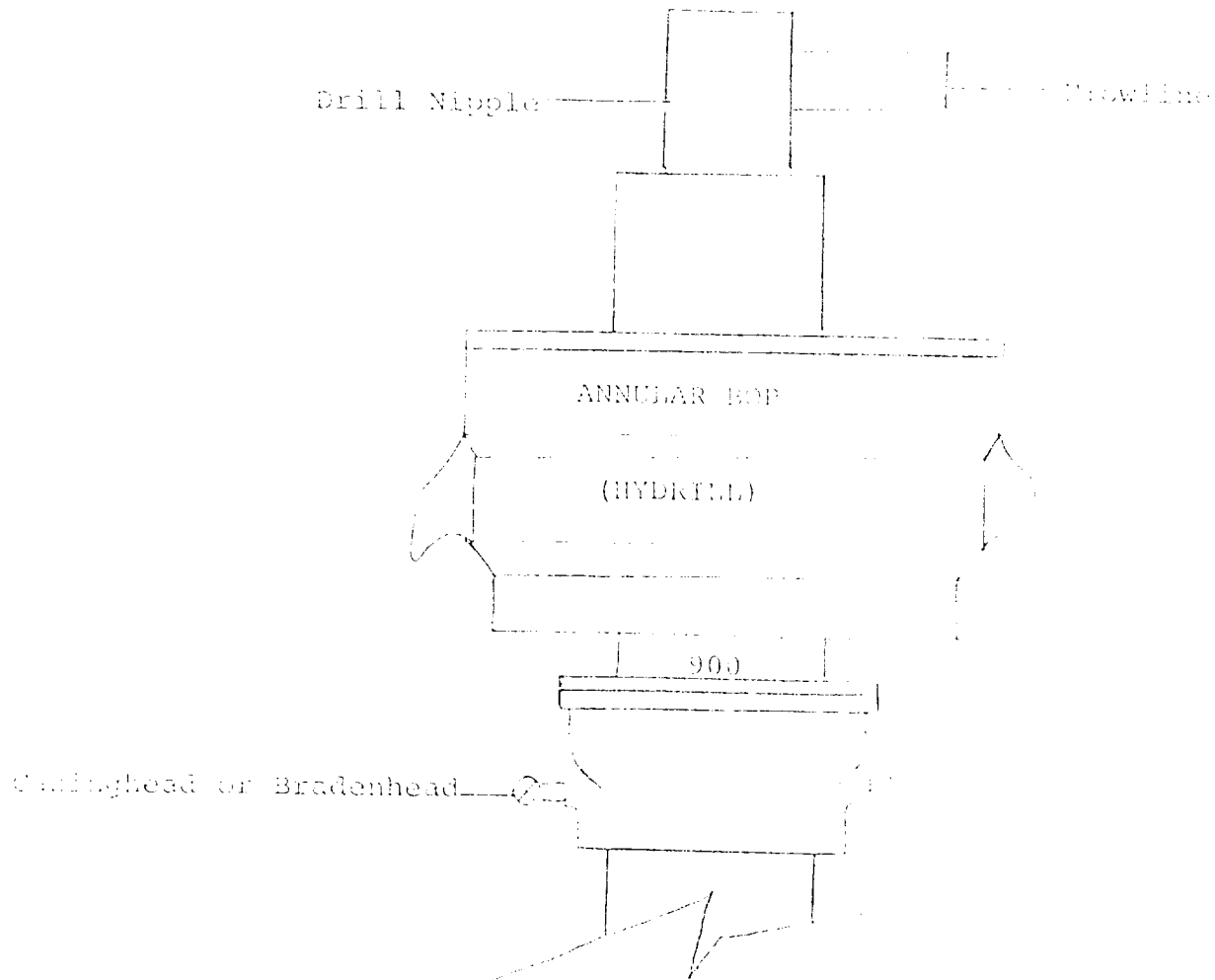
10. Anticipated starting date: As soon as possible after approval.

[illegible]

YPC  
BINNION "TT" Federal #2  
1980' FSL ; 1980' FWC  
Sec. 24-T7s-R25E  
Chaves County, NM  
EXHIBIT A

EXHIBIT A

# Exhibit B



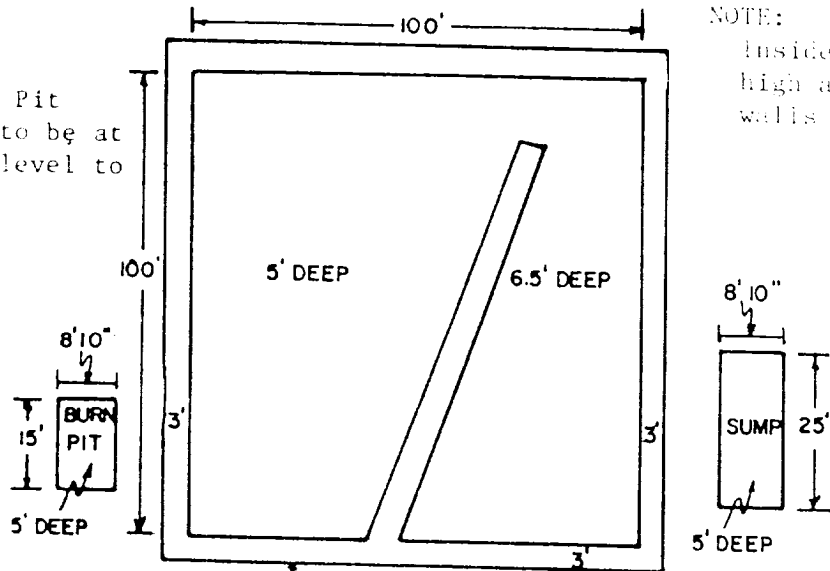
## THE FOLLOWING CONSTITUTE MINIMUM BLOWOUT PREVENTER REQUIREMENTS

1. All preventers to be hydraulically operated with secondary manual controls installed prior to drilling out from under casing.
2. All connections from operating manifolds to preventers to be all steel. Hole or tube a minimum of one inch in diameter.
3. The available closing pressure shall be at least 15% in excess of that required with sufficient volume to operate the BOP's.
4. All connections to and from preventer to have a pressure rating equivalent to that of the BOP's.
5. Hole must be kept filled on trips below intermediate casing.

# YATES PETROLEUM CORP.

## Exhibit C

Reserve Pit  
bottom to be at  
ground level to  
1 ft.



NOTE:

Inside walls must be as  
high and wide as outer  
walls of pit.

