

UNITED STATES  
DEPARTMENT OF THE INTERIOR

## GEOLOGICAL SURVEY

## APPLICATION FOR PERMIT TO DRILL, DEEPEN, OR PLUG BACK

## 1a. TYPE OF WORK

DRILL ☐DEEPEN ☐RECEIVED ☐

## b. TYPE OF WELL

OIL  
WELL ☐GAS  
WELL ☒OTHER ☐SINGLE  
ZONE ☐MULTIPLE  
ZONE ☐

## 2. NAME OF OPERATOR

Yates Petroleum Corporation

## 3. ADDRESS OF OPERATOR

207 S. 4th, Artesia, New Mexico 88210

## 4. LOCATION OF WELL (Report location clearly and in accordance with any State requirements.)\*

At surface

1980' FNL and 660' FEL

At proposed prod. zone

same

## 14. DISTANCE IN MILES AND DIRECTION FROM NEAREST TOWN OR POST OFFICE\*

approximately 16 miles ENE of Roswell, NM.

## 15. DISTANCE FROM PROPOSED\*

LOCATION TO NEAREST  
PROPERTY OR LEASE LINE, FT.  
(Also to nearest drill unit line, if any)

## 18. DISTANCE FROM PROPOSED LOCATION\*

TO NEAREST WELL, DRILLING, COMPLETED,  
OR APPLIED FOR, ON THIS LEASE, FT.

## 21. ELEVATION (Show whether DF, RT, GR, etc.)

3540.8' GL

## 23.

## PROPOSED CASING AND CEMENTING PROGRAM

SIZE OF HOLE	SIZE OF CASING	WEIGHT PER FOOT	SETTING DEPTH	QUANTITY OF CEMENT
14 3/4"	10 3/4"	40.5# J-55	840'	600 sx circulated
7 7/8"	4 1/2"	9.5#	TD	450 sx

We propose to drill and test the Abo and intermediate formations. Approximately 840' of surface casing will be set and cement circulated to shut off gravel and caving. If needed (lost circulation) 8 5/8" intermediate casing will be run to 1500' and cemented with enough cement calculated to tie back into the surface casing. If commercial, production casing will be run and cemented with adequate cover, perforate and stimulate as needed for production.

MUD PROGRAM: FW gel & LCM to 840', Brine to 3200', Brine & KCL water to TD.

BOP PROGRAM: BOP's will be installed at the offset and tested daily.

GAS NOT DEDICATED.

IN ABOVE SPACE DESCRIBE PROPOSED PROGRAM: If proposal is to deepen or plug back, give data on present productive zone and proposed new productive zone. If proposal is to drill or deepen directionally, give pertinent data on subsurface locations and measured and true vertical depths. Give blowout preventer program, if any.

## 24.

SIGNED

TITLE Regulatory Coordinator DATE 12/2/82

(This space for Federal or State office use)

PERMIT NO.

APPROVAL DATE

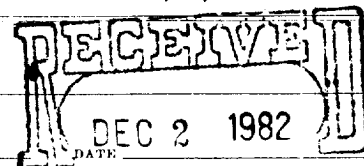
APPROVED BY

CONDITIONS OF APPROVAL

APPROVED

(ORIG. SGD.) DAVID R. GLASS

JAN 13 1983

JAMES A. GILLHAM  
DISTRICT SUPERVISOROIL & GAS  
U.S. GEOLOGICAL SURVEY  
ROSWELL, NEW MEXICO

UNITED STATES **Artesia, NM 88210**  
DEPARTMENT OF THE INTERIOR  
GEOLOGICAL SURVEY

**SUNDRY NOTICES AND REPORTS ON WELLS**

(Do not use this form for proposals to drill or to deepen or plug back to a different reservoir. Use Form 9-331-C for such proposals.)

1. oil ☐ well ☒ gas well ☒ other ☐ **JAN 18 1983**  
2. NAME OF OPERATOR **Yates Petroleum Corporation**  
3. ADDRESS OF OPERATOR **207 S. 4th, Artesia, New Mexico**  
4. LOCATION OF WELL (REPORT LOCATION CLEARLY. See space 17 below.)  
AT SURFACE: **1980' FNL and 1980' FEL**  
AT TOP PROD. INTERVAL:  
AT TOTAL DEPTH: **same**

16. CHECK APPROPRIATE BOX TO INDICATE NATURE OF NOTICE, REPORT, OR OTHER DATA

REQUEST FOR APPROVAL TO: SUBSEQUENT REPORT OF:  
TEST WATER SHUT-OFF ☐ ☐  
FRACTURE TREAT ☐ ☐  
SHOOT OR ACIDIZE ☐ ☐  
REPAIR WELL ☐ ☐  
PULL OR ALTER CASING ☐ ☐  
MULTIPLE COMPLETE ☐ ☐  
CHANGE ZONES ☐ ☐  
ABANDON\* ☐ ☐  
(other) **move location**

17. DESCRIBE PROPOSED OR COMPLETED OPERATIONS (Clearly state all pertinent details, and give pertinent dates, including estimated date of starting any proposed work. If well is directionally drilled, give subsurface locations and measured and true vertical depths for all markers and zones pertinent to this work.)\*

Moved per BLM.

Moved location from: **1980' FNL and 660' FEL**  
**Sec. 14-T8S-R25E**

to: **1980' FNL and 1980' FEL**  
**Sec. 14-T8S-R25E**

New map attached.

Subsurface Safety Valve: Manu. and Type

Set @ \_\_\_\_\_ Ft.

18. I hereby certify that the foregoing is true and correct

SIGNED **[Signature]** TITLE **Regulatory Coordinator** DATE **12/17/82**

(This space for Federal or State office use)

APPROVED BY **(ORIG. SGD.) DAVID R. GLASS** DATE

CONDITIONS OF APPROVAL IF ANY

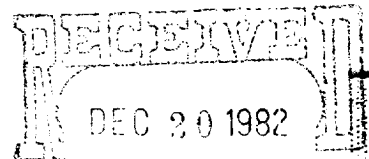
**JAN 13 1983**

**For JAMES A. GILHAM**

**DISTRICT SUPERVISOR** \*See Instructions on Reverse Side

5. LEASE  
**NM-16322**  
6. IF INDIAN, ALLOTTEE OR TRIBE NAME  
7. UNIT AGREEMENT NAME  
8. FARM OR LEASE NAME  
**Cummings "TO" Federal**  
9. WELL NO.  
**2**  
10. FIELD OR WILDCAT NAME  
**Under Pecos Slope Abo**  
11. SEC., T., R., M., OR BLK. AND SURVEY OR AREA  
**Sec. 14-T8S-R25E**  
12. COUNTY OR PARISH 13. STATE  
**Chaves NM**  
14. API NO.  
15. ELEVATIONS (SHOW DF, KDB, AND WD)  
**3543.2' GL**

(NOTE: Report results of multiple completion or zone change on Form 9-330.)



OIL & GAS  
U.S. GEOLOGICAL SURVEY  
ROSWELL, NEW MEXICO

NEW MEXICO OIL CONSERVATION COMMISSION  
WELL LOCATION AND ACREAGE DEDICATION PLAT

Form C-102  
Supersedes C-128  
Effective 1-1-65

All distances must be from the outer boundaries of the Section.

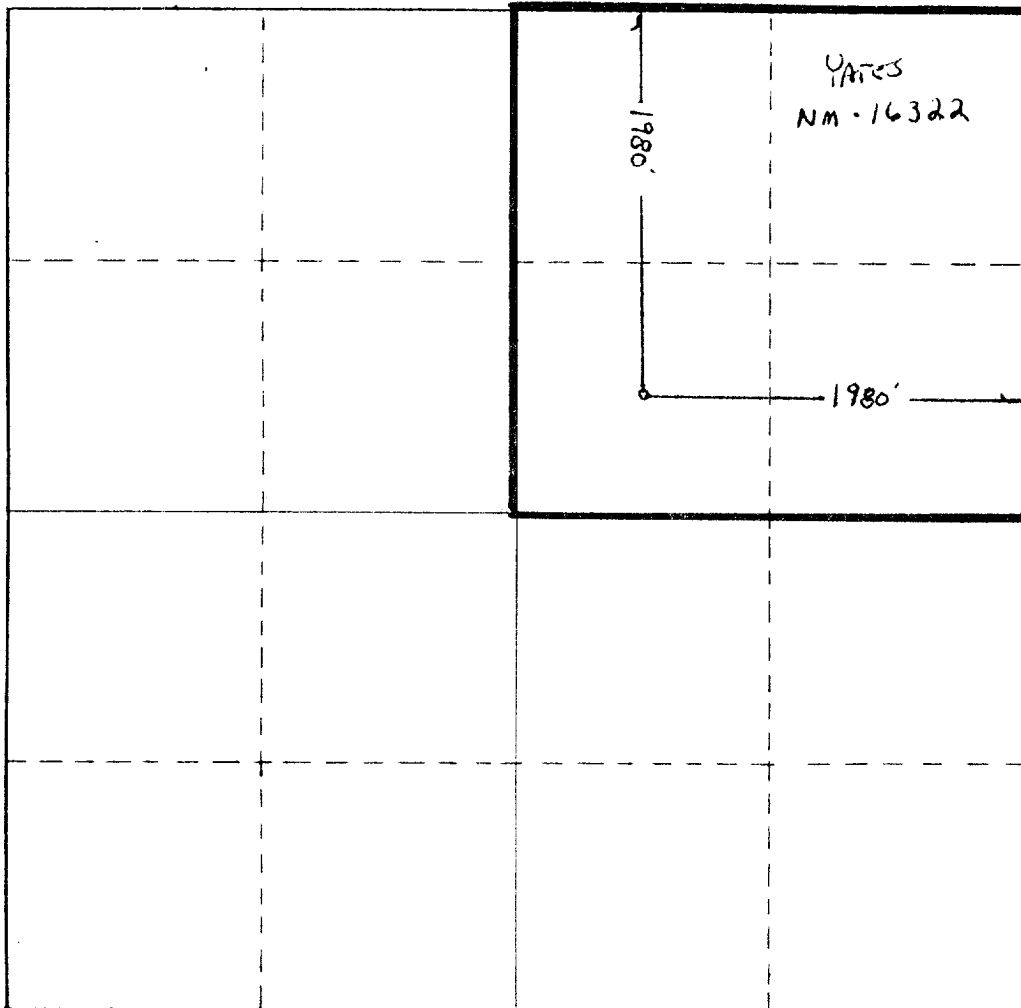
Operator YATES PETROLEUM CORPORATION			Lease Cummings "TO" Federal		Well No. 2
Unit Letter G	Section 14	Township 8 South	Range 25 East	County Chaves	
Actual Footage Location of Well:					
1980 feet from the North line and		1980 feet from the East line			
Ground Level Elev. 3543.2'	Producing Formation Abo		Pool <del>Yates</del> Pecos Slope Abo		Dedicated Acreage: 160 Acres

- Outline the acreage dedicated to the subject well by colored pencil or hachure marks on the plat below.
- If more than one lease is dedicated to the well, outline each and identify the ownership thereof (both as to working interest and royalty).
- If more than one lease of different ownership is dedicated to the well, have the interests of all owners been consolidated by communitization, unitization, force-pooling, etc?

☐ Yes ☐ No If answer is "yes," type of consolidation \_\_\_\_\_

If answer is "no," list the owners and tract descriptions which have actually been consolidated. (Use reverse side of this form if necessary.) \_\_\_\_\_

No allowable will be assigned to the well until all interests have been consolidated (by communitization, unitization, forced-pooling, or otherwise) or until a non-standard unit, eliminating such interests, has been approved by the Commission.



CERTIFICATION

I hereby certify that the information contained herein is true and complete to the best of my knowledge and belief.

*Ken Beardemphl*

Name

Ken Beardemphl

Position

Regulatory Coordinator

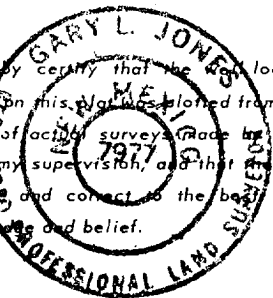
Company

Yates Petroleum Corp.

Date

12/17/82

I hereby certify that the location shown on this plat was plotted from field notes of actual surveys made by me or under my supervision, and that the same is true and correct to the best of my knowledge and belief.



Date Surveyed

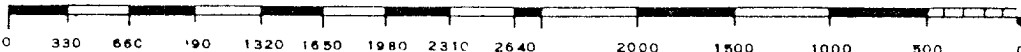
December 15, 1982

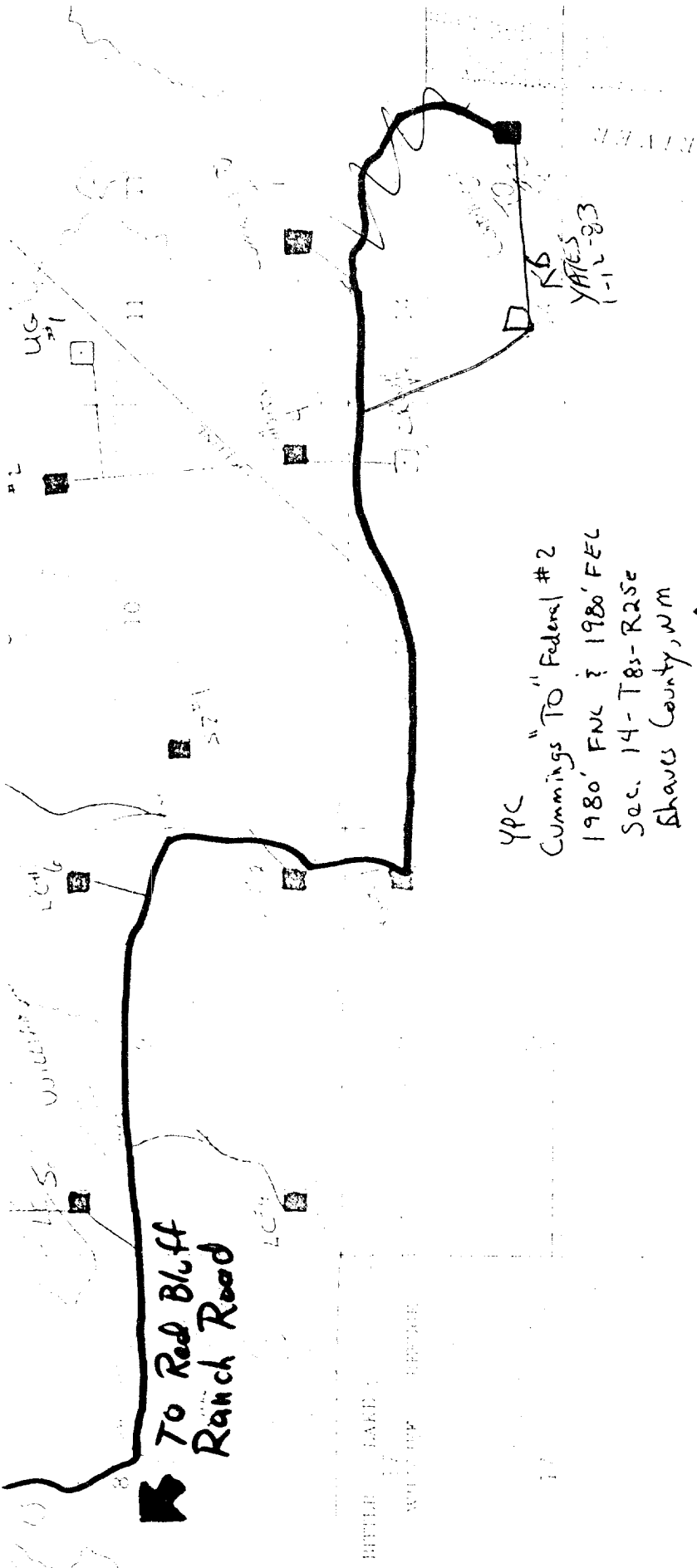
Registered Professional Engineer and/or Land Surveyor

*Gary L. Jones*

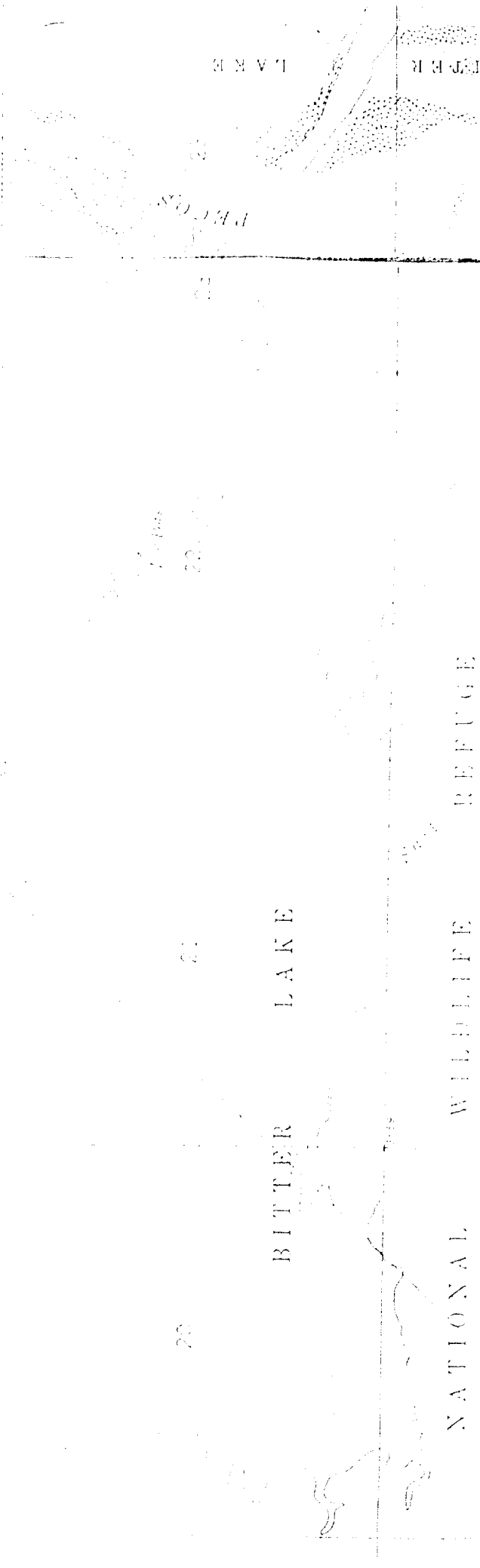
Certificate No.

7977





YPC  
Cummings TO "Federal #2  
1980' FNC & 1980' FEL  
Sec. 14-T8s-R25e  
Shavels County, W.M.  
Exhibit A



NEW MEXICO OIL CONSERVATION COMMISSION  
WELL LOCATION AND ACREAGE DEDICATION PLAT

Form C-102  
Supersedes C-128  
Effective 1-1-65

All distances must be from the outer boundaries of the Section.

Operator <b>YATES PETROLEUM CORPORATION</b>			Lease <b>Cummings "T0" Federal</b>		Well No. <b>2</b>
Unit Letter <b>H</b>	Section <b>14</b>	Township <b>8 South</b>	Range <b>25 East</b>	County <b>Chaves</b>	

Actual Footage Location of Well:

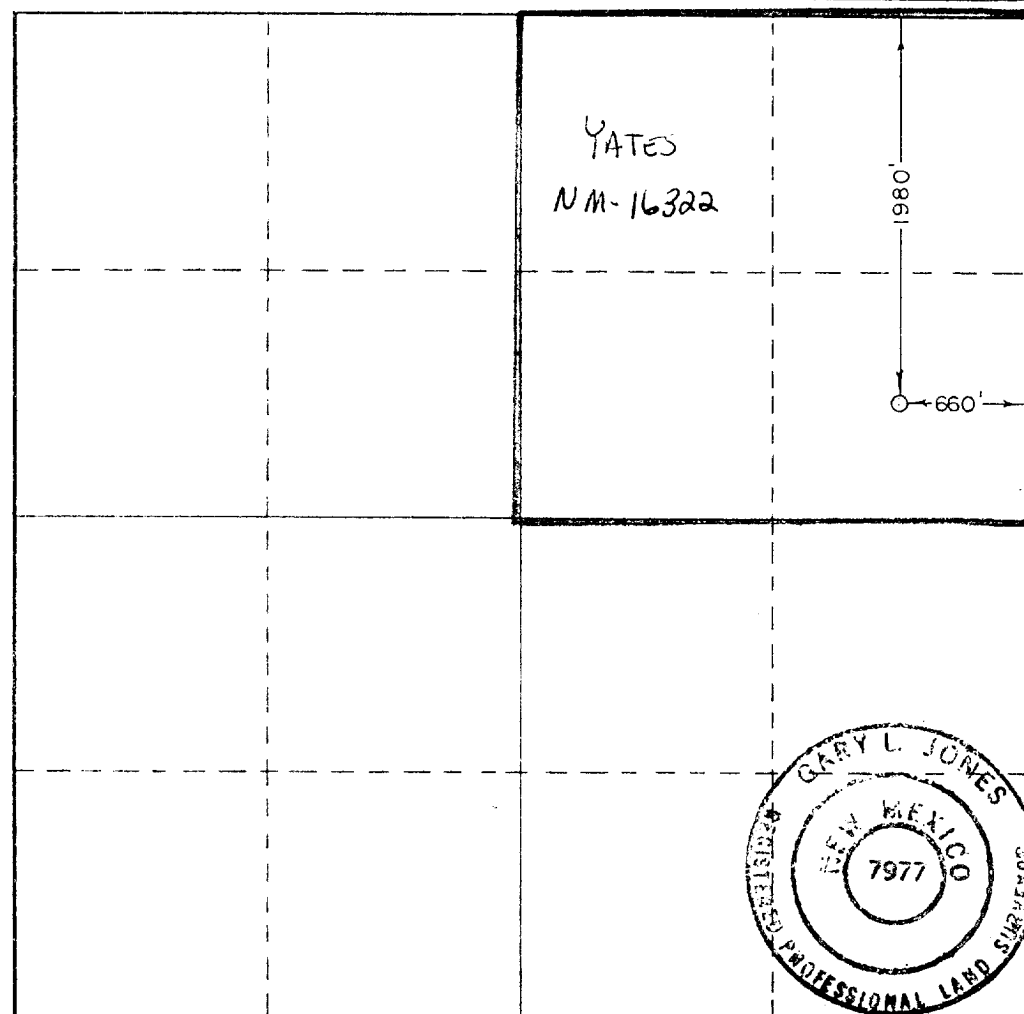
1980 feet from the North line and 660 feet from the East line		Dedicated Acreage: <b>160</b> Acres	
Ground Level Elev. <b>3540.6'</b>	Producing Formation <b>Abo</b>	Pool <b>Under. Pecos Slope Abo</b>	

1. Outline the acreage dedicated to the subject well by colored pencil or hatchure marks on the plat below.
2. If more than one lease is dedicated to the well, outline each and identify the ownership thereof (both as to working interest and royalty).
3. If more than one lease of different ownership is dedicated to the well, have the interests of all owners been consolidated by communitization, unitization, force-pooling, etc?

☐ Yes ☐ No If answer is "yes," type of consolidation \_\_\_\_\_

If answer is "no," list the owners and tract descriptions which have actually been consolidated. (Use reverse side of this form if necessary.) \_\_\_\_\_

No allowable will be assigned to the well until all interests have been consolidated (by communitization, unitization, forced-pooling, or otherwise) or until a non-standard unit, eliminating such interests, has been approved by the Commission.



CERTIFICATION

I hereby certify that the information contained herein is true and complete to the best of my knowledge and belief.

*Ken Beardemphl*

Name  
**Ken Beardemphl**

Position  
**Regulatory Coordinator**

Company  
**Yates Petroleum Corp.**

Date  
**11/2/82**

I hereby certify that the well location shown on this plat was plotted from field notes of actual surveys made by me or under my supervision, and that the same is true and correct to the best of my knowledge and belief.

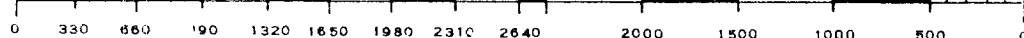
Date Surveyed  
**October 28, 1982**

Registered Professional Engineer and/or Land Surveyor

*Gary L. Jones*

Certificate No.

**7977**



YATES PETROLEUM CORPORATION  
Cummings "TO" Federal #2  
1980' FNL and 660' FEL  
Sec. 14-T8S-R25E

In conjunction with Form 9-331C, Application for Permit to Drill subject well, Yates Petroleum Corporation submits the following ten items of pertinent information in accordance with USGS requirements.

1. The geologic surface formation is quaternary alluvium.

2. The estimated tops of geologic markers are as follows:

<u>San Andres</u>	<u>388'</u>
<u>Glorieta</u>	<u>1519'</u>
<u>Fullerton</u>	<u>2946'</u>
<u>Abo</u>	<u>3670'</u>
<u>TD</u>	<u>4300'</u>

3. The estimated depths at which anticipated water, oil or gas formations are expected to be encountered:

Water: Approximately 250'

Oil or Gas: Abo 3995'

4. Proposed Casing Program: See Form 9-331C.

5. Pressure Control Equipment: See Form 9-331C and Exhibit B.

6. Mud Program: See Form 9-331C.

7. Auxiliary Equipment: Kelly Cock; pit level indicators and flow sensor equipment;  
sub with full-opening valve on floor, drill pipe connection.

8. Testing, Logging and Coring Program:

Samples: Surface casing to TD.

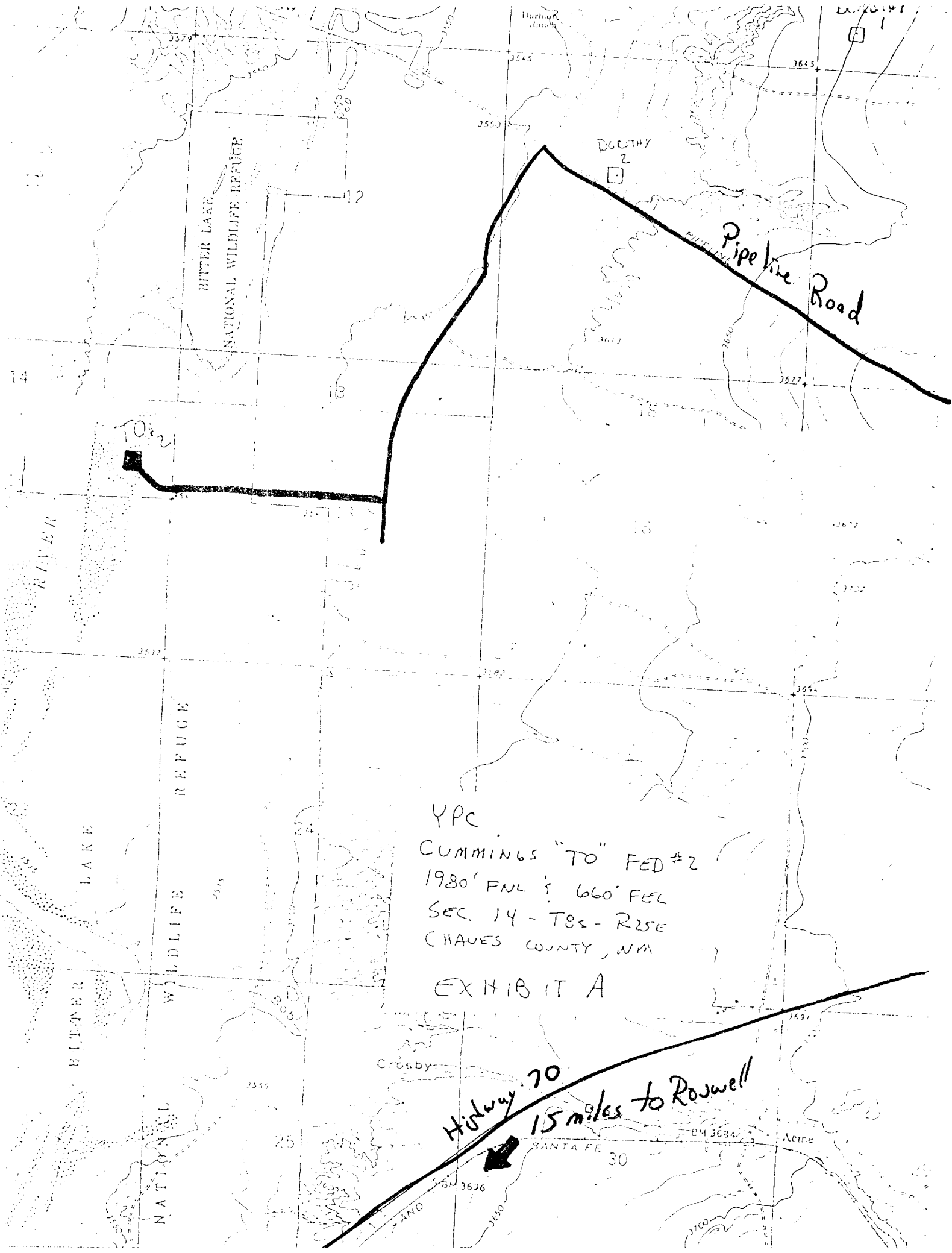
DST's: As warranted

Coring: As warranted

Logging: CNL-FDC TD to csg w/GR-CNL to surface & DLL from TD to csg

9. No abnormal pressures or temperatures are anticipated.

10. Anticipated starting date: As soon as possible after approval.

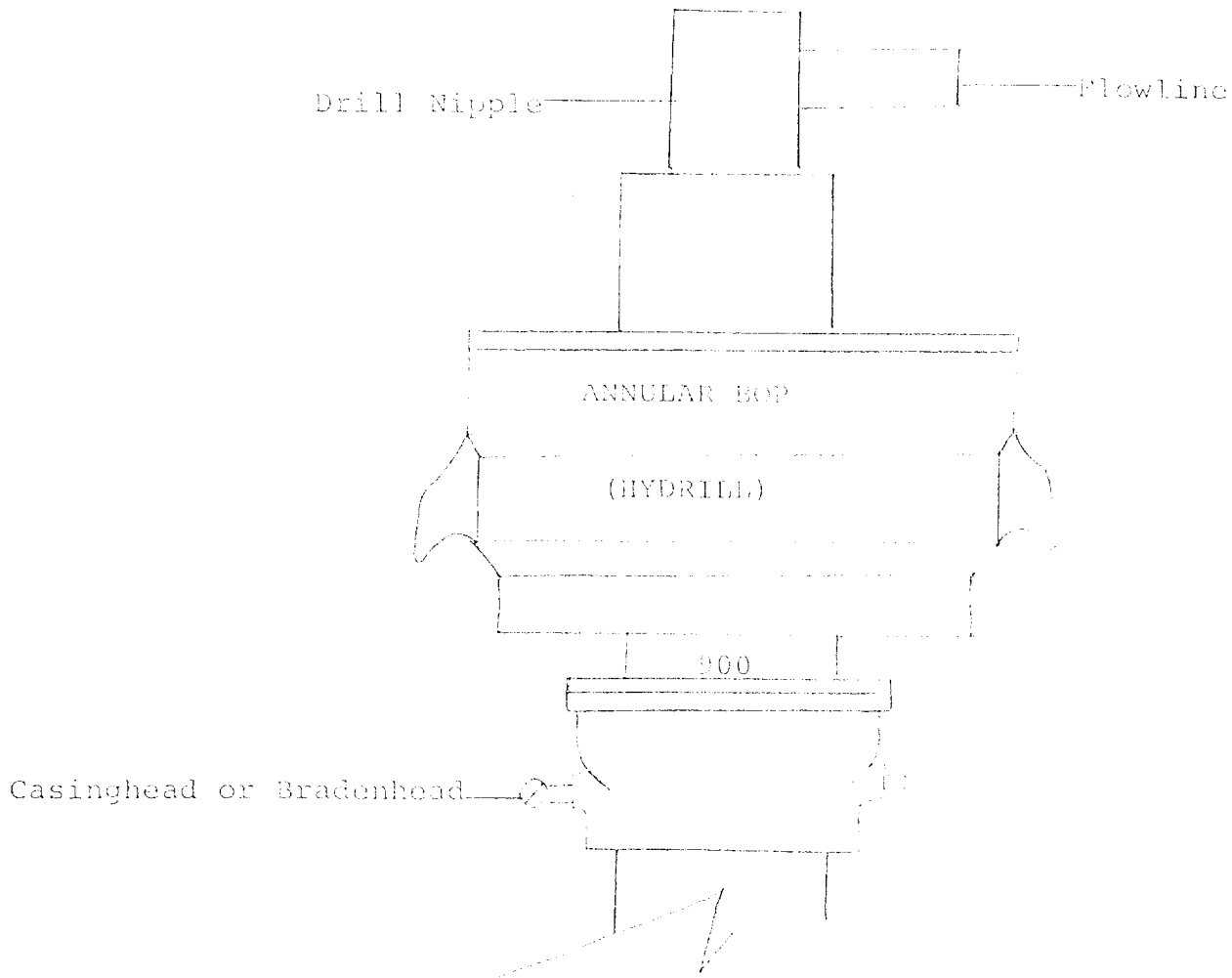


YPC  
CUMMINGS "TO" FED #2  
1980' FNL & 660' FEL  
SEC. 14 - T8S - R25E  
CHAVES COUNTY, NM

EXHIBIT A

Highway 70  
15 miles to Roswell

EXHIBIT D



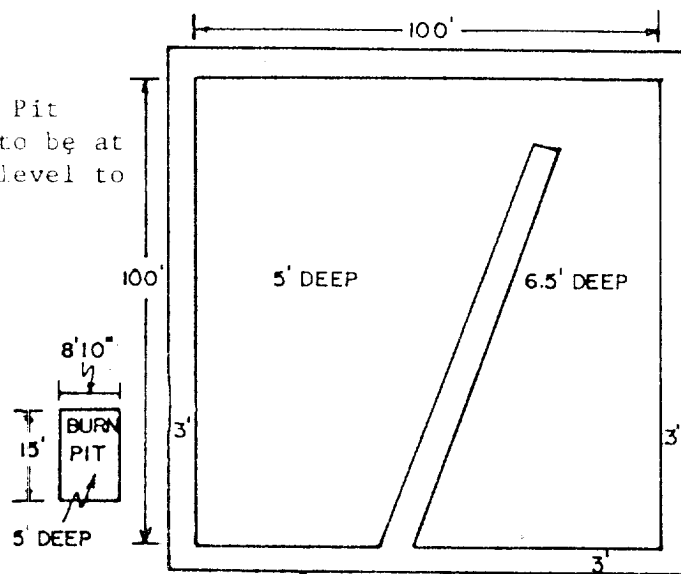
THE FOLLOWING CONSTITUTE MINIMUM BLOWOUT PREVENTER REQUIREMENTS

1. All preventers to be hydraulically operated with secondary manual controls installed prior to drilling out from under casing.
2. All connections from operating manifolds to preventers to be all steel. Hole or tube a minimum of one inch in diameter.
3. The available closing pressure shall be at least 15% in excess of that required with sufficient volume to operate the BOP's.
4. All connections to and from preventer to have a pressure rating equivalent to that of the BOP's.
5. Hole must be kept filled on trips below intermediate casing.

# YATES PETROLEUM CORP.

## Exhibit C

Reserve Pit  
bottom to be at  
ground level to  
1 ft.



NOTE:

Inside walls must be as  
high and wide as outer  
walls of pit.

