

UNITED STATES  
DEPARTMENT OF THE INTERIOR  
GEOLOGICAL SURVEY

5. LEASE DESIGNATION AND SERIAL NO.

NM-10458

6. IF INDIAN, ALLOTTEE OR TRIBE NAME

7. UNIT AGREEMENT NAME

8. FARM OR LEASE NAME

Duncan "LH" Federal

9. WELL NO.

3

10. FIELD AND POOL, OR WILDCAT

Undes. Pecos Slope Abo

11. SEC., T., R., M., OR BLK.  
AND SURVEY OR AREA

Sec. 3-T8S-R25E

12. COUNTY OR PARISH 13. STATE

Chaves

NM

## APPLICATION FOR PERMIT TO DRILL, DEEPEN, OR PLUG BACK

1a. TYPE OF WORK

DRILL ☒DEEPEN ☐PLUG BACK ☐

b. TYPE OF WELL

OIL  
WELL ☐GAS  
WELL ☒

OTHER

RECEIVED

SINGLE  
ZONE ☐MULTIPLE  
ZONE ☐

2. NAME OF OPERATOR

Yates Petroleum Corporation

JAN 24 1983

3. ADDRESS OF OPERATOR

207 S. 4th, Artesia, New Mexico 88210 C.D.

4. LOCATION OF WELL (Report location clearly and in accordance with any State requirements.)\*

At surface

660' FSL and 1980' FWL

At proposed prod. zone

same

14. DISTANCE IN MILES AND DIRECTION FROM NEAREST TOWN OR POST OFFICE\*

Approximately 22 miles NNE of Roswell, New Mexico

15. DISTANCE FROM PROPOSED\*

LOCATION TO NEAREST  
PROPERTY OR LEASE LINE, FT.

(Also to nearest drlg. unit line, if any) 660'

16. NO. OF ACRES IN LEASE

480

17. NO. OF ACRES ASSIGNED  
TO THIS WELL

160

18. DISTANCE FROM PROPOSED LOCATION\*  
TO NEAREST WELL, DRILLING, COMPLETED,  
OR APPLIED FOR, ON THIS LEASE, FT.

19. PROPOSED DEPTH

4125'

20. ROTARY OR CABLE TOOLS

Rotary

21. ELEVATIONS (Show whether DF, RT, GR, etc.)

3632.8' GL

22. APPROX. DATE WORK WILL START\*

ASAP

23.

## PROPOSED CASING AND CEMENTING PROGRAM

SIZE OF HOLE	SIZE OF CASING	WEIGHT PER FOOT	SETTING DEPTH	QUANTITY OF CEMENT
14 3/4"	10 3/4"	40.5# J-55	790'	525 sx circulated
7 7/8"	4 1/2"	9.5# J-55	TD	350 sx

We propose to drill and test the Abo and intermediate formations. Approximately 790' of surface casing will be set and cement circulated to shut off gravel and caving. If needed (lost circulation) 8 5/8" intermediate casing will be run to 1500' and cemented with enough cement calculated to tie back into the surface casing. If commercial, production casing will be run and cemented with adequate cover, perforated and stimulated as needed for production.

MUD PROGRAM: FW gel/LCM to 790; Brine to 3200', Brine/KCL water to TD.

BOP PROGRAM: BOP's will be installed at the offset and tested daily.

GAS NOT DEDICATED.

IN ABOVE SPACE DESCRIBE PROPOSED PROGRAM: If proposal is to deepen or plug back, give data on present productive zone and proposed new productive zone. If proposal is to drill or deepen directionally, give pertinent data on subsurface locations and measured and true vertical depths. Give blowout preventer program, if any.

24.

SIGNED

TITLE Regulatory Coordinator

DATE 1/5/83

(This space for Federal or State office use)

PERMIT NO.

APPROVED

APPROVAL DATE

(ORIG. SGD.) DAVID R. GLASS

APPROVED BY

TITLE

CONDITIONS OF APPROVAL, IF ANY

JAN 19 1983

For JAMES A. GILLHAM  
DISTRICT SUPERVISOR

DATE

JAN 6 1983

OIL & GAS  
U.S. GEOLOGICAL SURVEY  
ROSWELL, NEW MEXICO

NEW MEXICO OIL CONSERVATION COMMISSION  
WELL LOCATION AND ACREAGE DEDICATION PLAT

Form C-102  
Supersedes C-128  
Effective 1-1-65

All distances must be from the outer boundaries of the Section.

Operator YATES PETROLEUM CORPORATION			Lease Duncan "LH" Federal		Well No. 3
Unit Letter N	Section 3	Township 8 South	Range 25 East	County Chaves	
Actual Footage Location of Well: 660 feet from the South line and 1980 feet from the West line					
Ground Level Elev. 3632.8' GL	Producing Formation Abo		Pool Unders. Pecos Slope Abo	Dedicated Acreage: 160 Acres	

1. Outline the acreage dedicated to the subject well by colored pencil or hatchure marks on the plat below.
2. If more than one lease is dedicated to the well, outline each and identify the ownership thereof (both as to working interest and royalty).
3. If more than one lease of different ownership is dedicated to the well, have the interests of all owners been consolidated by communitization, unitization, force-pooling, etc?

☐ Yes ☐ No If answer is "yes," type of consolidation \_\_\_\_\_

If answer is "no," list the owners and tract descriptions which have actually been consolidated. (Use reverse side of this form if necessary.) \_\_\_\_\_

No allowable will be assigned to the well until all interests have been consolidated (by communitization, unitization, forced-pooling, or otherwise) or until a non-standard unit, eliminating such interests, has been approved by the Commission.

	<p align="center"><b>CERTIFICATION</b></p> <p>I hereby certify that the information contained herein is true and complete to the best of my knowledge and belief.</p> <p><i>Ken Beardemohl</i></p> <p>Name Ken Beardemohl</p> <p>Position Regulatory Coordinator</p> <p>Company Yates Petroleum Corp.</p> <p>Date 1/5/83</p>
	<p>I hereby certify that the well location shown on this plat was plotted from field notes of actual surveys made by me or under my supervision, and that the same is true and correct to the best of my knowledge and belief.</p> <p align="center"> </p> <p>Date Surveyed January 4, 1983</p> <p>Registered Professional Engineer and/or Land Surveyor</p> <p><i>Gary L. Jones</i></p> <p>Certificate No. 7977</p>

0 330 660 990 1320 1650 1980 2310 2640 2000 1800 1000 500 0

YATES PETROLEUM CORPORATION  
Duncan "LH" Federal #3  
660' FSL and 1980' FWL  
Sec. 3-T8S-R25E

In conjunction with Form 9-331C, Application for Permit to Drill subject well, Yates Petroleum Corporation submits the following ten items of pertinent information in accordance with USGS requirements.

1. The geologic surface formation is quaternary alluvium.

2. The estimated tops of geologic markers are as follows:

San Andres	371'
Glorieta	1471'
Fullerton	2881'
Abo	3571'
TD	4125'

3. The estimated depths at which anticipated water, oil or gas formations are expected to be encountered:

Water: 225' approximately

Oil or Gas: Abo 3600'

4. Proposed Casing Program: See Form 9-331C.

5. Pressure Control Equipment: See Form 9-331C and Exhibit B.

6. Mud Program: See Form 9-331C.

7. Auxiliary Equipment: Kelly Cock; pit level indicators and flow sensor equipment; sub with full-opening valve on floor, drill pipe connection.

8. Testing, Logging and Coring Program:

Samples: Surface casing to TD.

DST's: As warranted.

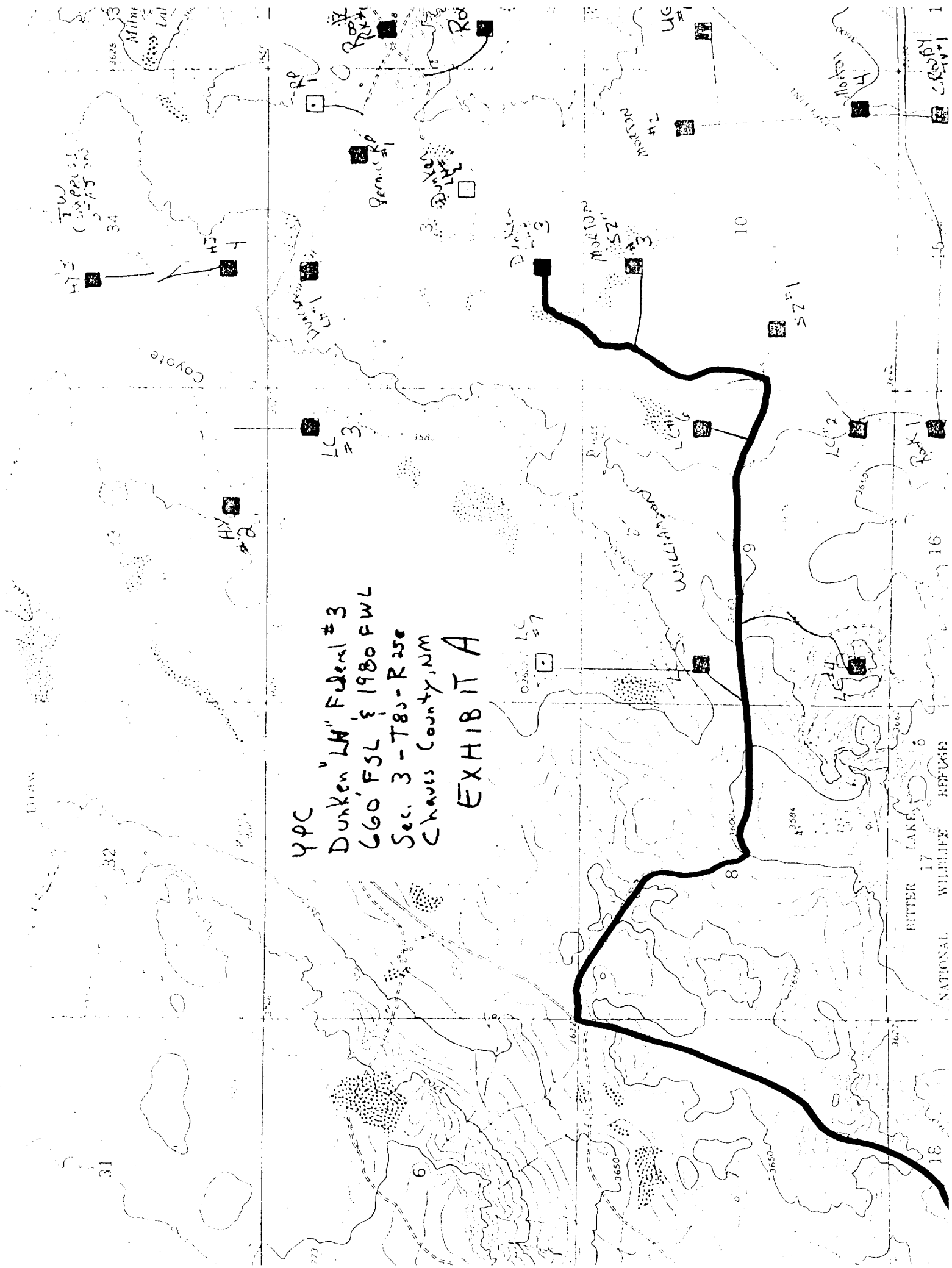
Coring: None

Logging: CNL-FDC TD to csg w/GR-CNL to surface & DLL from TD to csg.

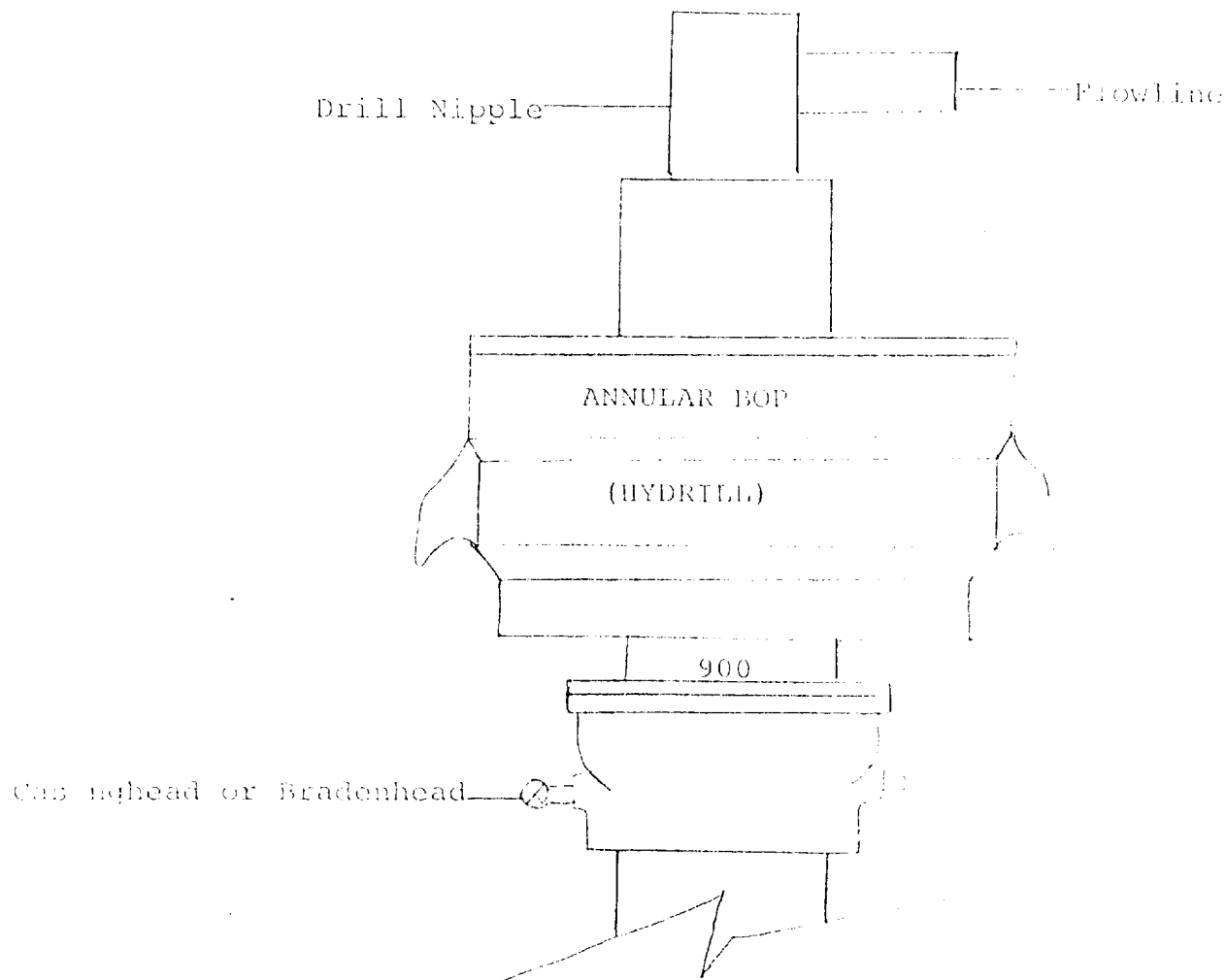
9. No abnormal pressures or temperatures are anticipated.

10. Anticipated starting date: As soon as possible after approval.

YPC  
 Dunken "LM" Federal #3  
 660' FSL & 1980 FWL  
 Sec. 3-T85-Rase  
 Chavis County, NM  
 EXHIBIT A



# Exhibit B



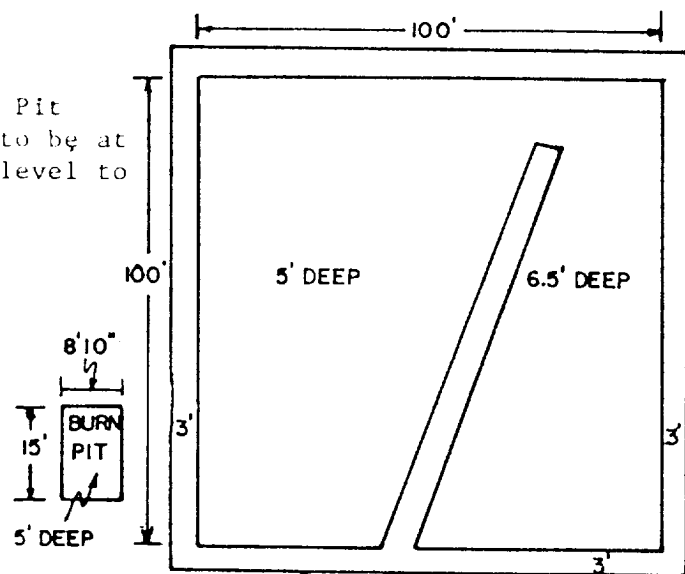
## THE FOLLOWING CONSTITUTE MINIMUM BLOWOUT PREVENTER REQUIREMENTS

1. All preventers to be hydraulically operated with secondary manual controls installed prior to drilling out from under casing.
2. All connections from operating manifolds to preventers to be all steel. Hole or tube a minimum of one inch in diameter.
3. The available closing pressure shall be at least 15% in excess of that required with sufficient volume to operate the BOP's.
4. All connections to and from preventer to have a pressure rating equivalent to that of the BOP's.
5. Hole must be kept filled on trips below intermediate casing.

# YATES PETROLEUM CORP.

## Exhibit C

Reserve Pit  
bottom to be at  
ground level to  
1 ft.



NOTE:

Inside walls must be as  
high and wide as outer  
walls of pit.

