

Drawer DD
Artesia, NM 8210

SUBMIT IN TRIPLICATE*
(Other instructions on
reverse side)

Form approved.
Budget Bureau No. 42-R1425.

30-005-61923

UNITED STATES
DEPARTMENT OF THE INTERIOR
GEOLOGICAL SURVEY

APPLICATION FOR PERMIT TO DRILL, DEEPEN, OR PLUG BACK

1a. TYPE OF WORK

DRILL ☒

DEEPEN ☐

PLUG BACK ☐

b. TYPE OF WELL

OIL
WELL ☒

GAS
WELL ☐

OTHER ☐

SINGLE
ZONE ☐

RECEIVED ☐

2. NAME OF OPERATOR

Yates Petroleum Corporation

3. ADDRESS OF OPERATOR

207 S. 4th, Artesia, New Mexico 88210

4. LOCATION OF WELL (Report location clearly and in accordance with any State requirements.)

At surface 1650' FSL and 330' FEL

At proposed prod. zone
same

14. DISTANCE IN MILES AND DIRECTION FROM NEAREST TOWN OR POST OFFICE*

Approximately 40 miles NE of Roswell, NM.

15. DISTANCE FROM PROPOSED*

LOCATION TO NEAREST
PROPERTY OR LEASE LINE, FT.
(Also to nearest drlg. unit line, if any)

660'

15. DISTANCE FROM PROPOSED LOCATION*

TO NEAREST WELL, DRILLING, COMPLETED,
OR APPLIED FOR, ON THIS LEASE, FT.

16. NO. OF ACRES IN LEASE

540'

19. PROPOSED DEPTH

7000'

17. NO. OF ACRES ASSIGNED
TO THIS WELL

40

20. ROTARY OR CABLE TOOLS

Rotary

21. ELEVATIONS (Show whether DF, RT, GR, etc.)

3957.4' GL

22. APPROX. DATE WORK WILL START*

ASAP

23.

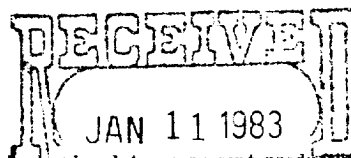
PROPOSED CASING AND CEMENTING PROGRAM

SIZE OF HOLE	SIZE OF CASING	WEIGHT PER FOOT	SETTING DEPTH	QUANTITY OF CEMENT
17 1/2"	13 3/8"	48# H-40	350'	400 sx circulated
12 1/4"	8 5/8"	24# K-55	1800'	600 sx circulated
7 7/8"	4 1/2"	9.5# K-55	TD	300 sx

We propose to drill the Granite test. Approximately 350' of surface casing will be set and cemented to shut off gravel and caving. Intermediate casing will be run to 1800'. If commercial, production casing will be run and cemented with adequate cover, perforated and stimulated as needed for production.

MUD PROGRAM: surface-FW gel/LCM, intermediate-native mud/cut brine to 6500', salt/starch to TD.

BOP PROGRAM: BOP's will be installed at the offset and tested daily.



IN ABOVE SPACE DESCRIBE PROPOSED PROGRAM: If proposal is to deepen or plug back, give data on present productive zone and proposed new productive zone. If proposal is to drill or deepen directionally, give pertinent data on subsurface locations and measured and true vertical depths. Give blowout preventer program, if any.

24.

SIGNED

George H. Stewart
APPROVED
(Orig. Sgd.)

TITLE Regulatory Agent

DATE 1/11/83

(This space for Federal or State office use)

GEORGE H. STEWART

PERMIT NO.

JAN 26 1983

APPROVAL DATE

APPROVED BY

CONDITIONS OF APPROVAL, IF ANY

JAMES A. GILLHAM
DISTRICT SUPERVISOR

TITLE

DATE

NEW MEXICO OIL CONSERVATION COMMISSION
WELL LOCATION AND ACREAGE DEDICATION PLAT

Form C-102
Supersedes C-128
Effective 1-1-65

All distances must be from the outer boundaries of the Section.

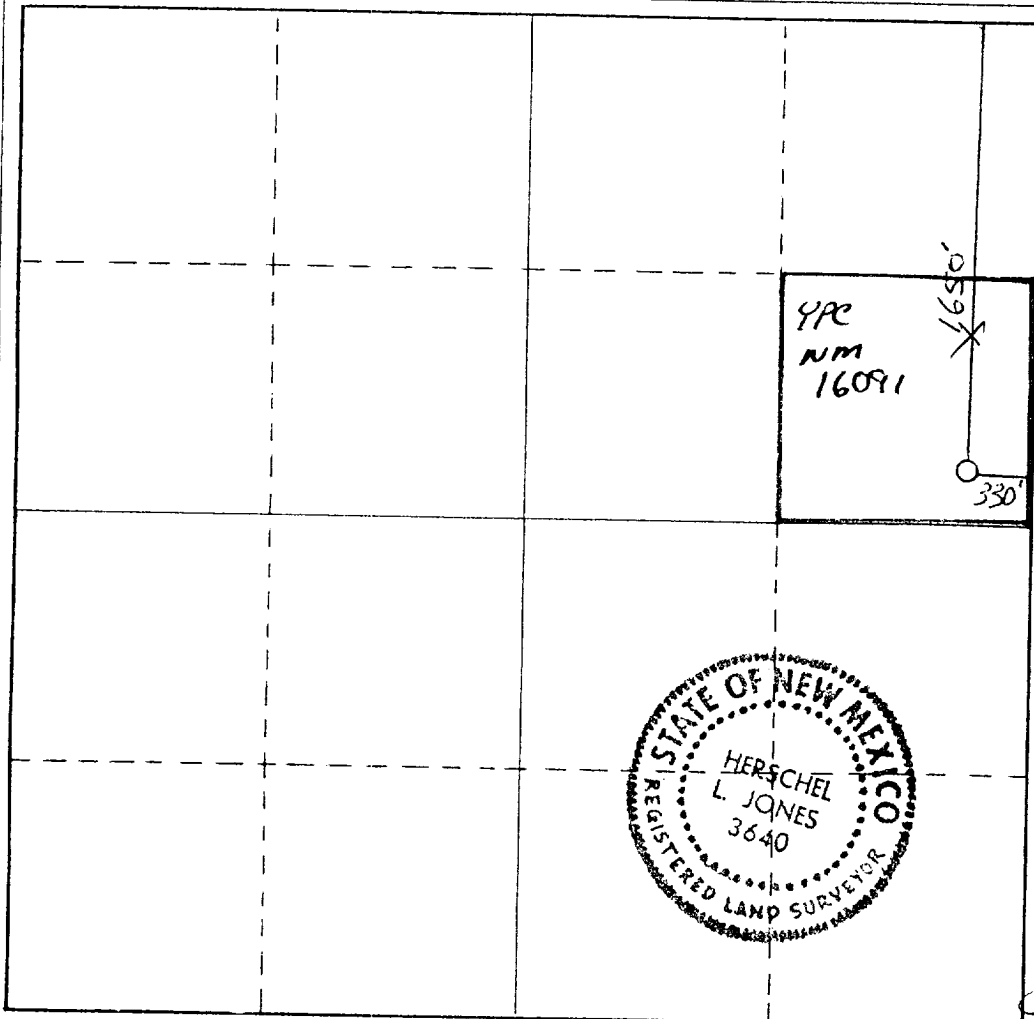
Operator YATES PETROLEUM CORPORATION			Lease Boaz "WO" Federal		Well No. 1
Unit Letter H	Section 10	Township 5 South	Range 27 East	County Chaves	
Actual Footage Location of Well: 1650 feet from the North line and 330 feet from the East line					
Ground Level Elev. 3957.1' GL	Producing Formation ELLENBURGER		Pool UNDESIGNATED	Dedicated Acreage; 40 Acres	

1. Outline the acreage dedicated to the subject well by colored pencil or hachure marks on the plat below.
2. If more than one lease is dedicated to the well, outline each and identify the ownership thereof (both as to working interest and royalty).
3. If more than one lease of different ownership is dedicated to the well, have the interests of all owners been consolidated by communitization, unitization, force-pooling, etc?

☐ Yes ☒ No If answer is "yes," type of consolidation _____

If answer is "no," list the owners and tract descriptions which have actually been consolidated. (Use reverse side of this form if necessary.) _____

No allowable will be assigned to the well until all interests have been consolidated (by communitization, unitization, forced-pooling, or otherwise) or until a non-standard unit, eliminating such interests, has been approved by the Commission.



CERTIFICATION

I hereby certify that the information contained herein is true and complete to the best of my knowledge and belief.

Name Cy Cowan
Position Regulatory Coordinator
Company Yates Petroleum Corp.

Date 1/11/83

I hereby certify that the well location shown on this plat was plotted from field notes of actual surveys made by me or under my supervision, and that the same is true and correct to the best of my knowledge and belief.

Date Surveyed January 10, 1983

Registered Professional Engineer and/or Land Surveyor

Certificate No. 7977

0 330 660 990 1320 1650 1980 2310 2640 2000 1500 1000 500 0

Boaz "WO" Federal #1
 1650' FNL and 330' FEL
 Sec. 10-T5S-R27E

In conjunction with Form 9-331C, Application for Permit to Drill subject well, Yates Petroleum Corporation submits the following ten items of pertinent information in accordance with USGS requirements.

1. The geologic surface formation is sandy alluvium.

2. The estimated tops of geologic markers are as follows:

San Andres	1481'	Elenberger	6807'
Glorieta	2662'	Granite	6932'
Abo	4756'	TD	7000'
Wolfcamp	5356'		
Cisco	5970'		
Strawn	6395'		
Mississippian Lime	6595'		

3. The estimated depths at which anticipated water, oil or gas formations are expected to be encountered:

Water: 250'-300'

Oil or Gas: 6950'

4. Proposed Casing Program: See Form 9-331C.

5. Pressure Control Equipment: See Form 9-331C and Exhibit B.

6. Mud Program: See Form 9-331C.

7. Auxiliary Equipment: Kelly Cock; pit level indicators and flow sensor equipment;
 sub with full-opening valve on floor, drill pipe connection.

8. Testing, Logging and Coring Program:

Samples: Surface casing to TD-10' intervals.

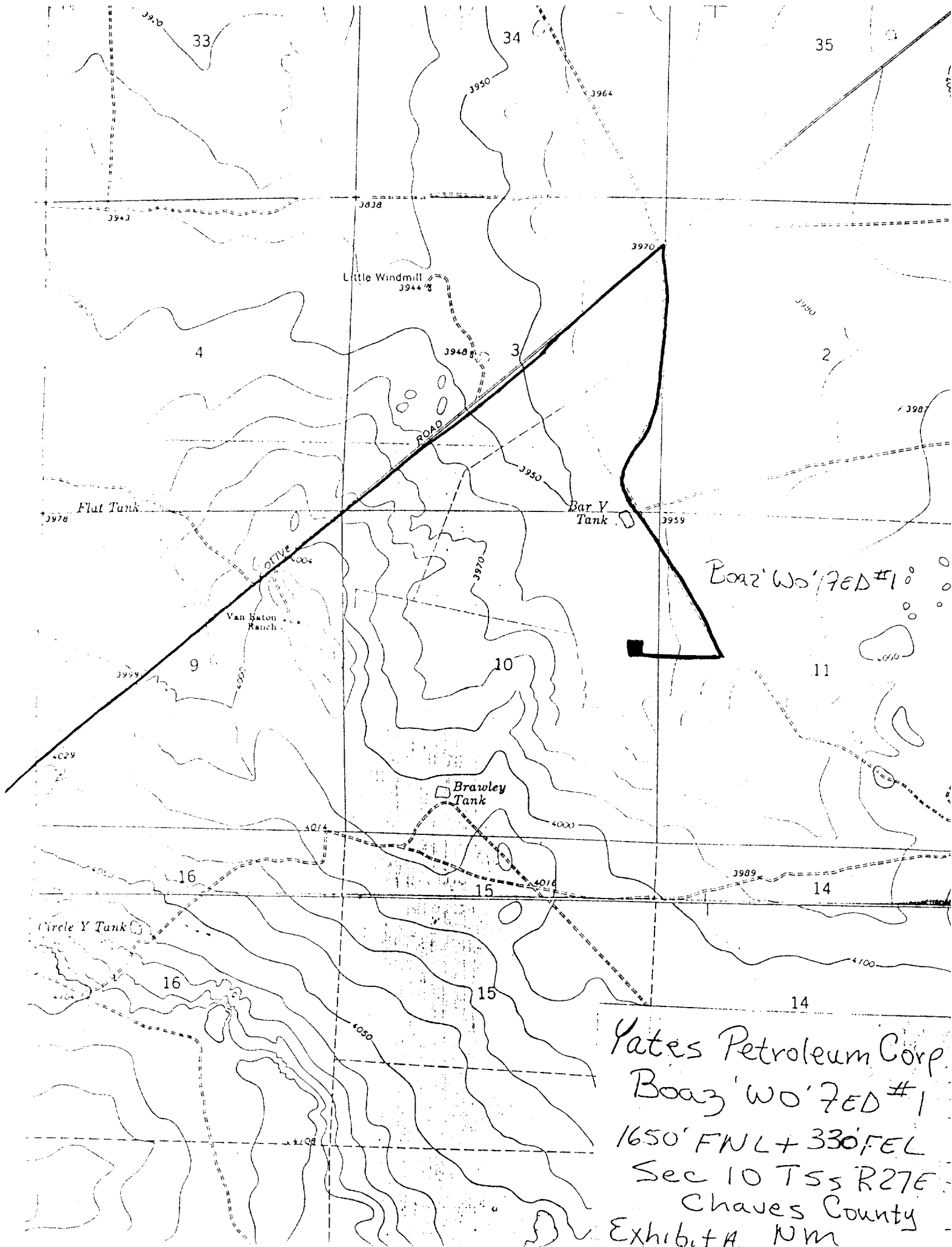
DIT's: As warranted.

Coring: None

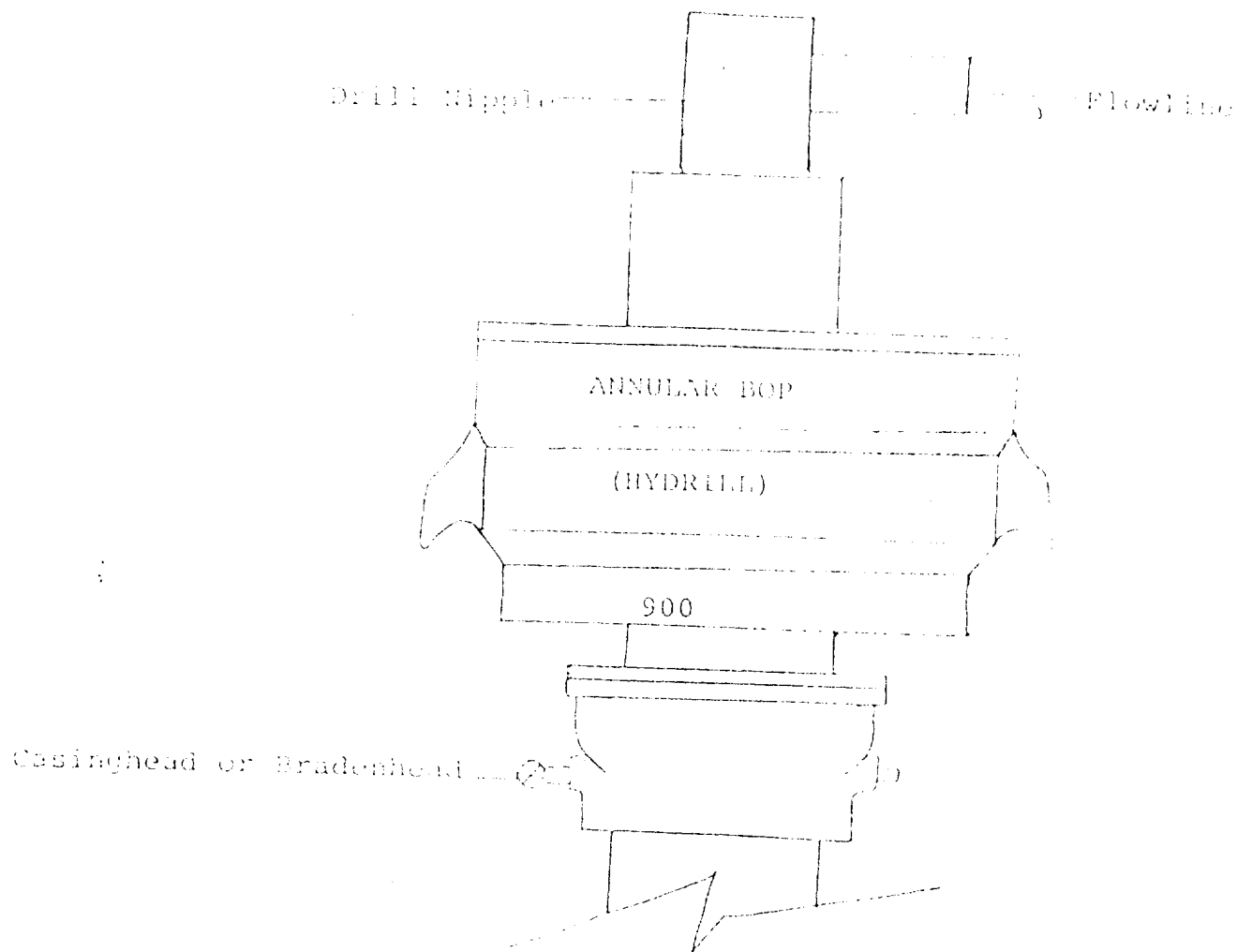
Logging: CNL-LDT, DLL RxO, HDT

9. No abnormal pressures or temperatures are anticipated.

10. Anticipated starting date: As soon as possible after approval.



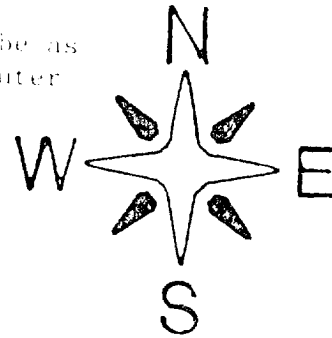
Yates Petroleum Corp.
Boaz' WO' 7ED #1
1650' FNL + 330' FEL
Sec 10 T55 R27E
Chaves County
Exhibit A. NM



THE FOLLOWING CONSTITUTE MINIMUM BLOWOUT PREVENTER REQUIREMENTS

1. All preventers to be hydraulically operated with secondary manual controls installed prior to drilling out from under casing.
2. All connections from operating manifolds to preventers to be all steel. Hole or tube a minimum of one inch in diameter.
3. The available closing pressure shall be at least 15% in excess of that required with sufficient volume to operate the BOP's.
4. All connections to and from preventer to have a pressure rating equivalent to that of the BOP's.
5. Hole must be kept filled on trips below intermediate casing.

Exhibit C





207 SOUTH FOURTH STREET
ARTESIA, NEW MEXICO 88210

TELEPHONE (505) 748-1331

S. P. YATES
PRESIDENT
MARTIN YATES, III
VICE PRESIDENT
JOHN A. YATES
VICE PRESIDENT
B. W. HARPER
SEC. TREAS.

January 6, 1983

Minerals Management Service
Federal Building
Roswell, New Mexico 88201
Attention: Mr. George Stewart

Re: Boaz "WO" Federal #1

Dear Mr. Stewart,

Yates Petroleum Corporation has submitted an application to drill a well on surface owned by Edwin T. Denton, Kenna, New Mexico. This well is located in Section 10-T5S-R27E, 1650' FNL & 330' FEL, Eddy County, New Mexico.

In an on-site visit with Mr. Denton, it was agreed that we would compensate him monetarily for the surface damages incurred. After drilling has been completed, the pit area will be leveled after it is dry and along with the pad will be left to reseed naturally.

Sincerely,

Cy Cowan
Regulatory Agent
YATES PETROLEUM CORPORATION

CC/dw