

NO. OF COPIES RECEIVED	
DISTRIBUTION	
ANTA FE	✓
FILE	✓
U.S.G.S.	2
LAND OFFICE	✓
OPERATOR	✓

NEW MEXICO OIL CONSERVATION COMMISSION

Form C-101
Revised 1-1-65

30-005-61926

SEP 30 1982

O. C. D.

ARTESIA, OFFICE

5A. Indicate Type of Lease

STATE ☒

FEE ☐

5. State Oil & Gas Lease No.

L-2464

APPLICATION FOR PERMIT TO DRILL, DEEPEN, OR PLUG BACK

1a. Type of Work DRILL <input checked="" type="checkbox"/> DEEPEN <input type="checkbox"/> PLUG BACK <input type="checkbox"/>		7. Unit Agreement Name	
b. Type of Well OIL WELL <input type="checkbox"/> GAS WELL <input checked="" type="checkbox"/> OTHER <input type="checkbox"/>		8. Farm or Lease Name Tolmac State	
2. Name of Operator McClellan Oil Corporation ✓		9. Well No. 3	
3. Address of Operator P.O. Drawer 730, Roswell, New Mexico, 88202		10. Field and Pool, or Wildcat Undesignated Abo	
4. Location of Well UNIT LETTER <u>G</u> LOCATED <u>2310</u> FEET FROM THE <u>East North</u> LINE AND <u>2310</u> FEET FROM THE <u>North</u> LINE OF SEC. <u>36</u> TWP. <u>9-S</u> RGE. <u>25-E</u> NMPM		12. County Chaves	
19. Proposed Depth 4500'		19A. Formation Abo	
20. Rotary or C.T. Rotary		21. Elevations (Show whether DE, RT, etc.) 3640' G.L.	
21A. Kind & Status Plug. Bond Statewide		21B. Drilling Contractor Salazar Brothers	
22. Approx. Date Work will start Dec. 10, 1982			

PROPOSED CASING AND CEMENT PROGRAM

SIZE OF HOLE	SIZE OF CASING	WEIGHT PER FOOT	SETTING DEPTH	SACKS OF CEMENT	EST. TOP
17-1/2"	13-3/8"	48	40'	5 yds.	Circ.
12-1/4"	8-5/8"	23	1100'	600 SX	Circ.
7-7/8"	4-1/2"	10.5	4500'	300 SX	3500'

Propose to drill and test the Abo formation. If production is indicated will run 4-1/2" production casing and attempt completion.

Estimated Geologic tops: San Andres 580' Tubb 3170'
Glorieta 1680' Abo 3910'

Mud Program: Will use native mud to top of Abo. Mud up 100' above top of Abo with salt base gel having a water loss of 15 cc, viscosity of 30-40.

Gas is not dedicated.

APPROVAL VALID FOR 180 DAYS
PERMIT EXPIRES 7-31-83
UNLESS DRILLING UNDERWAY

IN ABOVE SPACE DESCRIBE PROPOSED PROGRAM: IF PROPOSAL IS TO DEEPEN OR PLUG BACK, GIVE DATA ON PRESENT PRODUCTIVE ZONE AND PROPOSED NEW PRODUCTIVE ZONE. GIVE BLOWOUT PREVENTER PROGRAM, IF ANY.

I hereby certify that the information above is true and complete to the best of my knowledge and belief.

Signed Mark McClellan Title Geologist Date September 28, 1982

(This space for State Use)

APPROVED BY [Signature] TITLE OIL AND GAS INSPECTOR DATE JAN 31 1983

CONDITIONS OF APPROVAL, IF ANY:

NSL -1653 appv. 1-25-83

All distances must be from the outer boundaries of the Section.

Operator McClellan Oil Corp.			Lease Tolmac State		Well No. #3
Unit Letter G	Section 36	Township 9 South	Range 25 East	County Chaves	
Actual Footage Location of Well: 2310 feet from the North line and 2310 feet from the East line					
Ground Level Elev. 3640	Producing Formation Abo		Pool Perjack Undesignated Abo	Dedicated Acreage: 160 Acres	

1. Outline the acreage dedicated to the subject well by colored pencil or hatchure marks on the plat below.

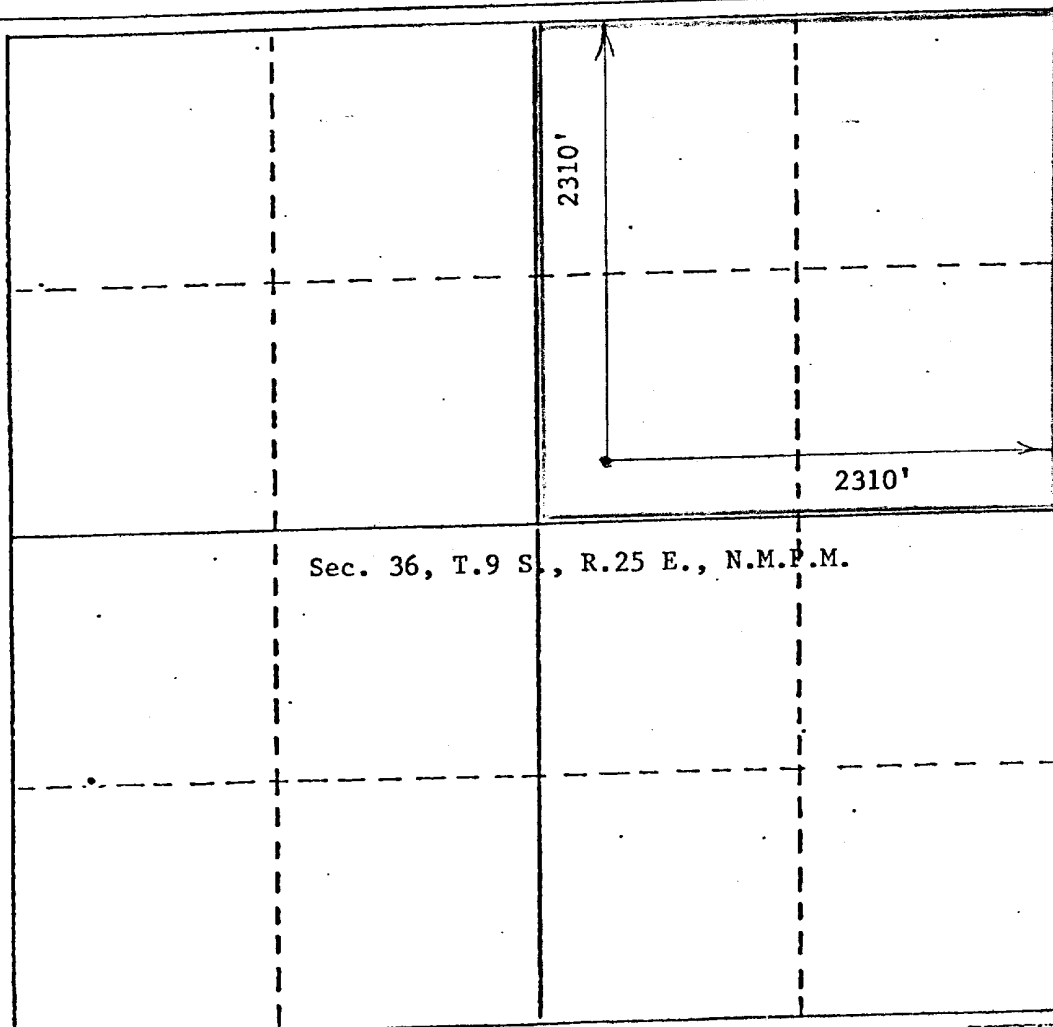
2. If more than one lease is dedicated to the well, outline each and identify the ownership thereof (both as to working interest and royalty).

3. If more than one lease of different ownership is dedicated to the well, have the interests of all owners been consolidated by communitization, unitization, force-pooling, etc?

☐ Yes ☐ No If answer is "yes," type of consolidation _____

If answer is "no," list the owners and tract descriptions which have actually been consolidated. (Use reverse side of this form if necessary.) _____

No allowable will be assigned to the well until all interests have been consolidated (by communitization, unitization, force-pooling, or otherwise) or until a non-standard unit, eliminating such interests, has been approved by the Division.



CERTIFICATION

I hereby certify that the information contained herein is true and complete to the best of my knowledge and belief.

Mark McClellan

Name
Mark McClellan

Position
Geologist

Company
McClellan Oil Corporation

Date
September 27, 1982

I hereby certify that the well location shown on this plat was plotted from field notes of actual surveys made by me or under my supervision, and that the same is true and correct to the best of my knowledge and belief.

Date Surveyed
September 24, 1982
Registered Professional Engineer
and/or Land Surveyor
John D. Jaques
John D. Jaques, P.E. & L.S.
Cincinnati, Ohio
6250501000

0 230 460 690 920 1150 1380 1610 1840 2070 2300 2530 2760 2990 3220 3450 3680 3910 4140 4370 4600 4830 5060 5290 5520 5750 5980 6210 6440 6670 6900 7130 7360 7590 7820 8050 8280 8510 8740 8970 9200 9430 9660 9890 10120 10350 10580 10810 11040 11270 11500 11730 11960 12190 12420 12650 12880 13110 13340 13570 13800 14030 14260 14490 14720 14950 15180 15410 15640 15870 16100 16330 16560 16790 17020 17250 17480 17710 17940 18170 18400 18630 18860 19090 19320 19550 19780 20010 20240 20470 20700 20930 21160 21390 21620 21850 22080 22310 22540 22770 23000 23230 23460 23690 23920 24150 24380 24610 24840 25070 25300 25530 25760 25990 26220 26450 26680 26910 27140 27370 27600 27830 28060 28290 28520 28750 28980 29210 29440 29670 29900 30130 30360 30590 30820 31050 31280 31510 31740 31970 32200 32430 32660 32890 33120 33350 33580 33810 34040 34270 34500 34730 34960 35190 35420 35650 35880 36110 36340 36570 36800 37030 37260 37490 37720 37950 38180 38410 38640 38870 39100 39330 39560 39790 40020 40250 40480 40710 40940 41170 41400 41630 41860 42090 42320 42550 42780 43010 43240 43470 43700 43930 44160 44390 44620 44850 45080 45310 45540 45770 46000 46230 46460 46690 46920 47150 47380 47610 47840 48070 48300 48530 48760 48990 49220 49450 49680 49910 50140 50370 50600 50830 51060 51290 51520 51750 51980 52210 52440 52670 52900 53130 53360 53590 53820 54050 54280 54510 54740 54970 55200 55430 55660 55890 56120 56350 56580 56810 57040 57270 57500 57730 57960 58190 58420 58650 58880 59110 59340 59570 59800 60030 60260 60490 60720 60950 61180 61410 61640 61870 62100 62330 62560 62790 63020 63250 63480 63710 63940 64170 64400 64630 64860 65090 65320 65550 65780 66010 66240 66470 66700 66930 67160 67390 67620 67850 68080 68310 68540 68770 69000 69230 69460 69690 69920 70150 70380 70610 70840 71070 71300 71530 71760 71990 72220 72450 72680 72910 73140 73370 73600 73830 74060 74290 74520 74750 74980 75210 75440 75670 75900 76130 76360 76590 76820 77050 77280 77510 77740 77970 78200 78430 78660 78890 79120 79350 79580 79810 80040 80270 80500 80730 80960 81190 81420 81650 81880 82110 82340 82570 82800 83030 83260 83490 83720 83950 84180 84410 84640 84870 85100 85330 85560 85790 86020 86250 86480 86710 86940 87170 87400 87630 87860 88090 88320 88550 88780 89010 89240 89470 89700 89930 90160 90390 90620 90850 91080 91310 91540 91770 92000 92230 92460 92690 92920 93150 93380 93610 93840 94070 94300 94530 94760 94990 95220 95450 95680 95910 96140 96370 96600 96830 97060 97290 97520 97750 97980 98210 98440 98670 98900 99130 99360 99590 99820 100050 100280 100510 100740 100970 101200 101430 101660 101890 102120 102350 102580 102810 103040 103270 103500 103730 103960 104190 104420 104650 104880 105110 105340 105570 105800 106030 106260 106490 106720 106950 107180 107410 107640 107870 108100 108330 108560 108790 109020 109250 109480 109710 109940 110170 110400 110630 110860 111090 111320 111550 111780 112010 112240 112470 112700 112930 113160 113390 113620 113850 114080 114310 114540 114770 115000 115230 115460 115690 115920 116150 116380 116610 116840 117070 117300 117530 117760 117990 118220 118450 118680 118910 119140 119370 119600 119830 120060 120290 120520 120750 120980 121210 121440 121670 121900 122130 122360 122590 122820 123050 123280 123510 123740 123970 124200 124430 124660 124890 125120 125350 125580 125810 126040 126270 126500 126730 126960 127190 127420 127650 127880 128110 128340 128570 128800 129030 129260 129490 129720 129950 130180 130410 130640 130870 131100 131330 131560 131790 132020 132250 132480 132710 132940 133170 133400 133630 133860 134090 134320 134550 134780 135010 135240 135470 135700 135930 136160 136390 136620 136850 137080 137310 137540 137770 138000 138230 138460 138690 138920 139150 139380 139610 139840 140070 140300 140530 140760 140990 141220 141450 141680 141910 142140 142370 142600 142830 143060 143290 143520 143750 143980 144210 144440 144670 144900 145130 145360 145590 145820 146050 146280 146510 146740 146970 147200 147430 147660 147890 148120 148350 148580 148810 149040 149270 149500 149730 149960 150190 150420 150650 150880 151110 151340 151570 151800 152030 152260 152490 152720 152950 153180 153410 153640 153870 154100 154330 154560 154790 155020 155250 155480 155710 155940 156170 156400 156630 156860 157090 157320 157550 157780 158010 158240 158470 158700 158930 159160 159390 159620 159850 160080 160310 160540 160770 161000 161230 161460 161690 161920 162150 162380 162610 162840 163070 163300 163530 163760 163990 164220 164450 164680 164910 165140 165370 165600 165830 166060 166290 166520 166750 166980 167210 167440 167670 167900 168130 168360 168590 168820 169050 169280 169510 169740 169970 170200 170430 170660 170890 171120 171350 171580 171810 172040 172270 172500 172730 172960 173190 173420 173650 173880 174110 174340 174570 174800 175030 175260 175490 175720 175950 176180 176410 176640 176870 177100 177330 177560 177790 178020 178250 178480 178710 178940 179170 179400 179630 179860 180090 180320 180550 180780 181010 181240 181470 181700 181930 182160 182390 182620 182850 183080 183310 183540 183770 184000 184230 184460 184690 184920 185150 185380 185610 185840 186070 186300 186530 186760 186990 187220 187450 187680 187910 188140 188370 188600 188830 189060 189290 189520 189750 189980 190210 190440 190670 190900 191130 191360 191590 191820 192050 192280 192510 192740 192970 193200 193430 193660 193890 194120 194350 194580 194810 195040 195270 195500 195730 195960 196190 196420 196650 196880 197110 197340 197570 197800 198030 198260 198490 198720 198950 199180 199410 199640 199870 200100 200330 200560 200790 201020 201250 201480 201710 201940 202170 202400 202630 202860 203090 203320 203550 203780 204010 204240 204470 204700 204930 205160 205390 205620 205850 206080 206310 206540 206770 207000 207230 207460 207690 207920 208150 208380 208610 208840 209070 209300 209530 209760 209990 210220 210450 210680 210910 211140 211370 211600 211830 212060 212290 212520 212750 212980 213210 213440 213670 213900 214130 214360 214590 214820 215050 215280 215510 215740 215970 216200 216430 216660 216890 217120 217350 217580 217810 218040 218270 218500 218730 218960 219190 219420 219650 219880 220110 220340 220570 220800 221030 221260 221490 221720 221950 222180 222410 222640 222870 223100 223330 223560 223790 224020 224250 224480 224710 224940 225170 225400 225630 225860 226090 226320 226550 226780 227010 227240 227470 227700 227930 228160 228390 228620 228850 229080 229310 229540 229770 230000 230230 230460 230690 230920 231150 231380 231610 231840 232070 232300 232530 232760 232990 233220 233450 233680 233910 234140 234370 234600 234830 235060 235290 235520 235750 235980 236210 236440 236670 236900 237130 237360 237590 237820 238050 238280 238510 238740 238970 239200 239430 239660 239890 240120 240350 240580 240810 241040 241270 241500 241730 241960 242190 242420 242650 242880 243110 243340 243570 243800 244030 244260 244490 244720 244950 245180 245410 245640 245870 246100 246330 246560 246790 247020 247250 247480 247710 247940 248170 248400 248630 248860 249090 249320 249550 249780 250010 250240 250470 250700 250930 251160 251390 251620 251850 252080 252310 252540 252770 253000 253230 253460 253690 253920 254150 254380 254610 254840 255070 255300 255530 255760 255990 256220 256450 256680 256910 257140 257370 257600 257830 258060 258290 258520 258750 258980 259210 259440 259670 259900 260130 260360 260590 260820 261050 261280 261510 261740 261970 262200 262430 262660 262890 263120 263350 263580 263810 264040 264270 264500 264730 264960 265190 265420 265650 265880 266110 266340 266570 266800 267030 267260 267490 267720 267950 268180 268410 268640 268870 269100 269330 269560 269790 270020 270250 270480 270710 270940 271170 271400 271630 271860 272090 272320 272550 272780 273010 273240 273470 273700 273930 274160 274390 274620 274850 275080 275310 275540 275770 276000 276230 276460 276690 276920 277150 277380 277610 277840 278070 278300 278530 278760 278990 279220 279450 279680 279910 280140 280370 280600 280830 281060 281290 281520 281750 281980 282210 282440 282670 282900 283130 283360 283590 283820 284050 284280 284510 284740 284970 285200 285430 285660 285890 286120 286350 286580 286810 287040 287270 287500 287730 287960 288190 288420 288650 288880 289110 289340 289570 289800 290030 290260 290490 290720 290950 291180 291410 291640 291870 292100 292330 292560 292790 293020 293250 293480 293710 293940 294170 294400 294630 294860 295090 295320 295550 295780 296010 296240 296470 296700 296930 297160 297390 297620 297850 298080 298310 298540 298770 299000 299230 299460 299690 299920 300150 300380 300610 300840 301070 301300 301530 301760 301990 302220 302450 302680 302910 303140 303370 303600 303830 304060 304290 304520 304750 304980 305210 305440 305670 305900 306130 306360 306590 306820 307050 307280 307510 307740 307970 308200 308430 308660 308890 309120 309350 309580 309810 310040 310270 310500 310730 310960 311190 311420 311650 311880 312110 312340 312570 312800 313030 313260 313490 313720 313950 314180 314410 314640 314870 315100 315330 315560 315790 316020 316250 316480 316710 316940 317170 317400 317630 317860 318090 318320 318550 318780 319010 319240 319470 319700 319930 320160 320390 320620 320850 321080 321310 321540 321770 322000 322230 322460 322690 322920 323150 323380 323610 323840 324070 324300 324530 324760 324990 325220 325450 325680 325910 326140 326370 326600 326830 327060 327290 327520 327750 327980 328210 328440 328670 328900 329130 329360 329590 329820 330050 330280 330510 330740 330970 331200 331430 331660 331890 332120 332350 332580 332810 333040 333270 333500 333730 333960 334190 334420 334650 334880 335110 335340 335570 335800 336030 336260 336490 336720 336950 337180 337410 337640 337870 338100 338330 338560 338790 339020 339250 339480 339710 339940 340170 340400 340630 340860 341090 341320 341550 341780 342010 342240 342470 342700 342930 343160 343390 343620 343850 344080 344310 344540 344770 345000 345230 345460 345690 345920 346150 346380 346610 346840 347070 347300 347530 347760 347990 348220 348450 348680 348910 349140 349370 349600 349830 350060 350290 350520 350750 350980 351210 351440 351670 351900 352130 352360 352590 352820 353050 353280 353510 353740 353970 354200 354430 354660 354890 355120 355350 355580 355810 356040 356270 356500 356730 356960 357190 357420 357650 357880 358110 358340 358570 358800 359030 359260 359490 359720 359950 360180 360410 360640 360870 361100 361330 361560 361790 362020 362250 362480 362710 362940 363170 363400 363630 363860 364090 364320 364550 364780 365010 365240 365470 365700 365930 366160 366390 366620 366850 367080 367310 367540 367770 368000 368230 368460 368690 368920 369150 369380 3696