

NO. OF COPIES RECEIVED	
DISTRIBUTION	
SANTA FE	✓
FILE	✓
U.S.G.S.	✓
LAND OFFICE	✓
OPERATOR	✓

NEW MEXICO OIL CONSERVATION COMMISSION

RECEIVED

FEB 11 1983

O.C.D.

ARTESIA, OFFICE

30-005-61934
Form O-101
Revised 1-1-83

5A. Indicate Type of Lease	STATE <input type="checkbox"/>	FEED <input checked="" type="checkbox"/>
----------------------------	--------------------------------	--

5. Indicate Abo or Lease Name	
-------------------------------	--

6. Indicate Abo or Lease Name	
-------------------------------	--

7. Indicate Abo or Lease Name	
-------------------------------	--

8. Indicate Abo or Lease Name	Caballo "WX" Com
-------------------------------	------------------

9. Abo No.	1
------------	---

10. Indicate Abo or Lease Name	Pecos Slope Abo
--------------------------------	-----------------

11. Indicate Abo or Lease Name	
--------------------------------	--

12. Indicate Abo or Lease Name	Chaves
--------------------------------	--------

13. Indicate Abo or Lease Name	
--------------------------------	--

14. Indicate Abo or Lease Name	
--------------------------------	--

15. Indicate Abo or Lease Name	
--------------------------------	--

16. Indicate Abo or Lease Name	
--------------------------------	--

17. Indicate Abo or Lease Name	
--------------------------------	--

18. Indicate Abo or Lease Name	
--------------------------------	--

19. Indicate Abo or Lease Name	
--------------------------------	--

20. Indicate Abo or Lease Name	
--------------------------------	--

21. Indicate Abo or Lease Name	
--------------------------------	--

22. Indicate Abo or Lease Name	
--------------------------------	--

23. Indicate Abo or Lease Name	
--------------------------------	--

24. Indicate Abo or Lease Name	
--------------------------------	--

25. Indicate Abo or Lease Name	
--------------------------------	--

26. Indicate Abo or Lease Name	
--------------------------------	--

27. Indicate Abo or Lease Name	
--------------------------------	--

28. Indicate Abo or Lease Name	
--------------------------------	--

29. Indicate Abo or Lease Name	
--------------------------------	--

30. Indicate Abo or Lease Name	
--------------------------------	--

31. Indicate Abo or Lease Name	
--------------------------------	--

32. Indicate Abo or Lease Name	
--------------------------------	--

APPLICATION FOR PERMIT TO DRILL, DEEPEN, OR PLUG BACK

1. Type of Work	
-----------------	--

2. Type of Well	DRILL <input checked="" type="checkbox"/>	DEEPEN <input type="checkbox"/>	PLUG BACK <input type="checkbox"/>
-----------------	---	---------------------------------	------------------------------------

3. Type of Well	GAS <input checked="" type="checkbox"/>	OTHER <input type="checkbox"/>	SINGLE ZONE <input type="checkbox"/>	MULTIPLE ZONE <input type="checkbox"/>
-----------------	---	--------------------------------	--------------------------------------	--

4. Name of Operator	Yates Petroleum Corporation ✓
---------------------	-------------------------------

5. Address of Operator	207 S. 4th, Artesia, New Mexico 88210
------------------------	---------------------------------------

6. Section, Township, Range	UNIT LETTER M LOCATED 660 FEET FROM THE South LINE
-----------------------------	--

7. Section, Township, Range	660 FEET FROM THE West LINE OF SEC. 1 TWP. 5S RGE 24E NMPM
-----------------------------	--

8. Section, Township, Range	
-----------------------------	--

9. Section, Township, Range	
-----------------------------	--

10. Section, Township, Range	
------------------------------	--

11. Section, Township, Range	
------------------------------	--

12. Section, Township, Range	
------------------------------	--

13. Section, Township, Range	
------------------------------	--

14. Section, Township, Range	
------------------------------	--

15. Section, Township, Range	
------------------------------	--

16. Section, Township, Range	
------------------------------	--

17. Section, Township, Range	
------------------------------	--

18. Section, Township, Range	
------------------------------	--

19. Section, Township, Range	
------------------------------	--

20. Section, Township, Range	
------------------------------	--

21. Section, Township, Range	
------------------------------	--

22. Section, Township, Range	
------------------------------	--

23. Section, Township, Range	
------------------------------	--

24. Section, Township, Range	
------------------------------	--

25. Section, Township, Range	
------------------------------	--

26. Section, Township, Range	
------------------------------	--

27. Section, Township, Range	
------------------------------	--

We propose to drill and test the Abo and intermediate formations. Approximately 800' of surface casing will be set and cement circulated to shut off gravel and caving. If needed (lost circulation) 8 5/8" intermediate casing will be run to 1500' and cemented with enough cement calculated to tie back into the surface casing. If commercial, production casing will be run and cemented with adequate cover, perforated and stimulated as needed for production.

MUD PROGRAM: FW gel/LCM to 800', Brine to 3200', Brine/KCL water to TD

BOP PROGRAM: BOP's will be installed at the offset and tested daily.

GAS NOT DEDICATED.

APPROVAL VALID FOR 70 DAYS
PERMIT EXPIRES 3-15-83
UNLESS DRILLING UNDERWAY

ABOVE SPACE DESCRIBE PROPOSED PROGRAM: IF PROPOSAL IS TO DEEPEN OR PLUG BACK, GIVE DATA ON PRESENT PRODUCTIVE ZONE AND PROPOSED NEW PRO-

DUCTIVE ZONE. GIVE BLOWOUT PREVENTER PROGRAM, IF ANY.

I hereby certify that the information above is true and complete to the best of my knowledge and belief.

Signed Ken Deasong Title Regulatory Agent Date 2/4/83

(This space for State Use)

APPROVED BY Mike Williams OIL AND GAS INSPECTOR DATE FEB 15 1983

CONDITIONS OF APPROVAL, IF ANY:

30-005-61934
FEB 15 1983
43

NEW MEXICO OIL CONSERVATION COMMISSION
WELL LOCATION AND ACREAGE DEDICATION PLAT

Form C-102
Supersedes C-128
Effective 1-1-65

All distances must be from the outer boundaries of the Section.

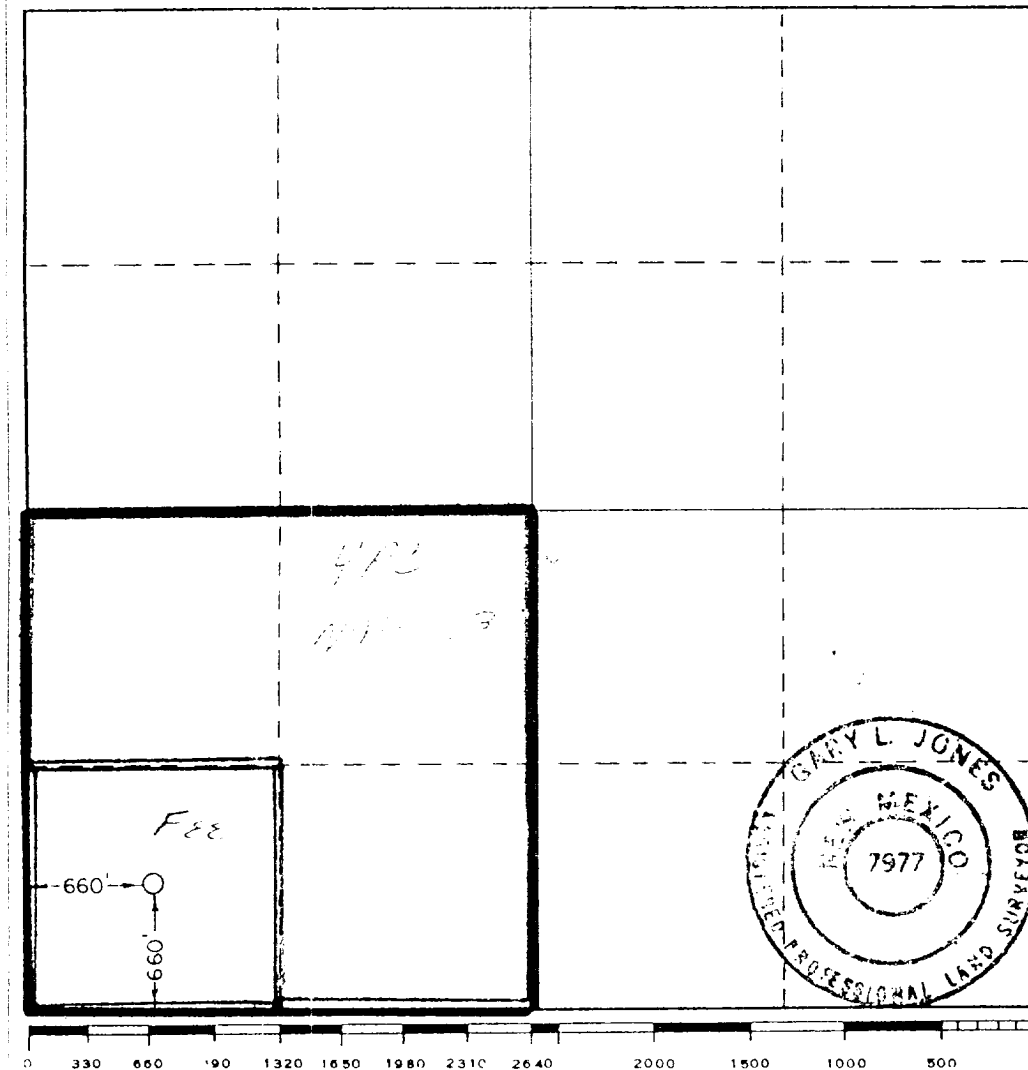
Operator YATES PETROLEUM CORPORATION		Lease Caballo "WX" Com		Well No. 1
Block Letter M	Section 1	Township 5 South	Range 24 East	County Chaves
Actual Footage Location of Well: 660 feet from the South line and 660 feet from the West line				
Ground Level Elev. 3868.8'	Estimated Production 760	Pool Pecos Slope H60	Dedicated Acreage: 160 Acres	

1. Outline the acreage dedicated to the subject well by colored pencil or hatchure marks on the plat below.
2. If more than one lease is dedicated to the well, outline each and identify the ownership thereof (both as to working interest and royalty).
3. If more than one lease of different ownership is dedicated to the well, have the interests of all owners been consolidated by communitization, unitization, force-pooling, etc?

☐ Yes ☐ No If answer is "yes," type of consolidation _____

If answer is "no," list the owners and tract descriptions which have actually been consolidated. (Use reverse side of this form if necessary.) _____

No allowable will be assigned to the well until all interests have been consolidated (by communitization, unitization, forced-pooling, or otherwise) or until a non-standard unit, eliminating such interests, has been approved by the Commission.



CERTIFICATION

I hereby certify that the information contained herein is true and complete to the best of my knowledge and belief.

Ken Beardemohl
Name

Ken Beardemohl
Position

Regulatory Agent
Company

Yates Petroleum Corp.

Date

2/11/83

I hereby certify that the well location shown on this plat was plotted from field notes of actual surveys made by me or under my supervision, and that the same is true and correct to the best of my knowledge and belief.

Date Surveyed

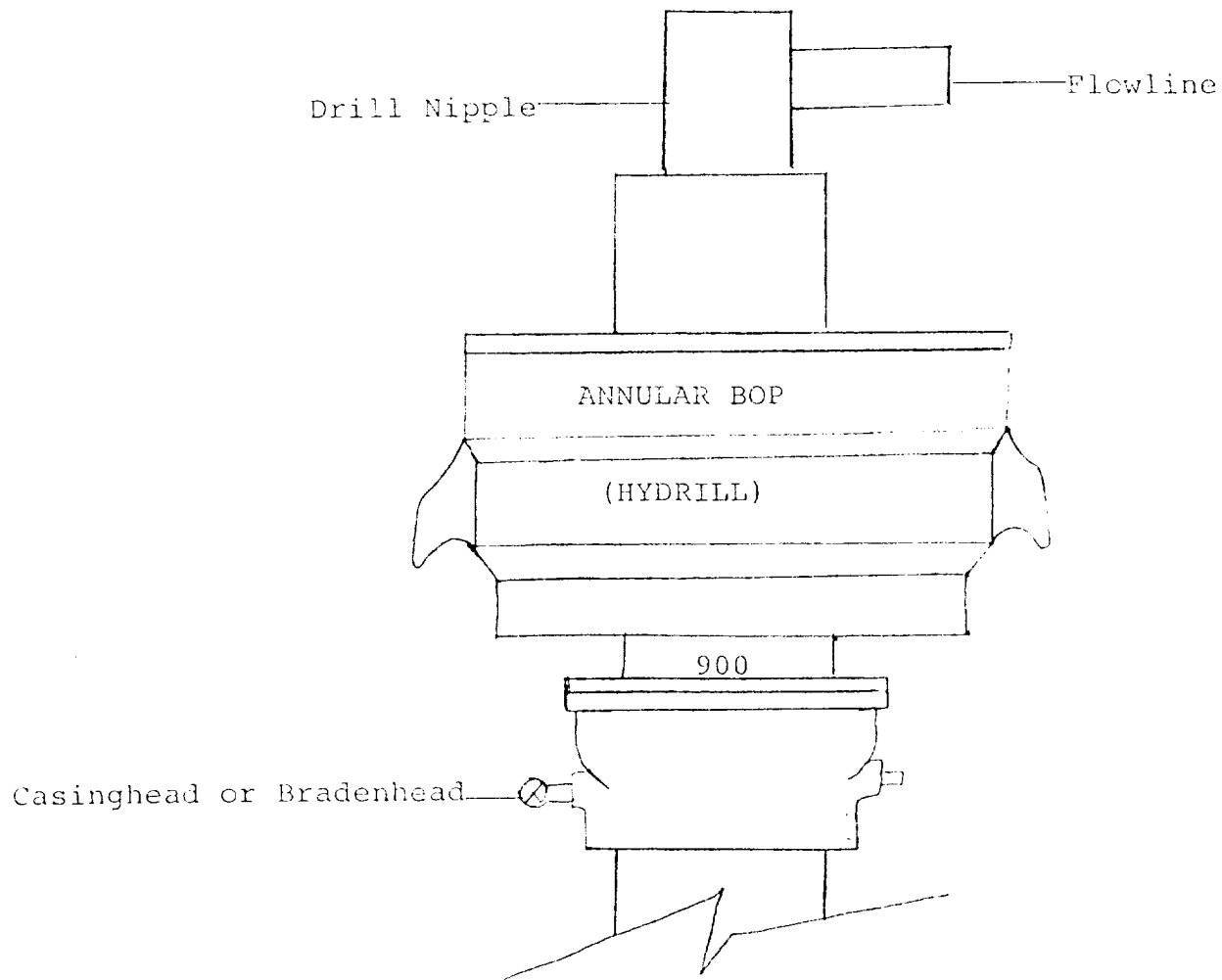
February 7, 1983

Registered Professional Engineer and/or Land Surveyor

Gary L. Jones
Certificate No.

7977

EXHIBIT B



THE FOLLOWING CONSTITUTE MINIMUM BLOWOUT PREVENTER REQUIREMENTS

1. All preventers to be hydraulically operated with secondary manual controls installed prior to drilling out from under casing.
2. All connections from operating manifolds to preventers to be all steel. Hole or tube a minimum of one inch in diameter.
3. The available closing pressure shall be at least 15% in excess of that required with sufficient volume to operate the BOP's.
4. All connections to and from preventer to have a pressure rating equivalent to that of the BOP's.
5. Hole must be kept filled on trips below intermediate casing.