

OIL CONSERVATION DIVISION

STATE OF NEW MEXICO
ENERGY AND MINERALS DEPARTMENTP. O. BOX 2088
SANTA FE, NEW MEXICO 87501Form C-102
Revised 10-1-79

All distances must be from the outer boundaries of the Section.

Operator Jack J. Grynberg		Lease Horsecreek State Com.		Well No. #2
Unit Letter C	Section 4	Township 3S	Range 24E	County Chaves
Actual Postage Location of Well: 660 feet from the NORTH line and 1980 feet from the West line				
Ground Level Elev. 3990.5'	Producing Formation A.B.O.		Post (1) Pecos Slope A.B.O.	Dedicated Acreage: 160 Acres

1. Outline the acreage dedicated to the subject well by colored pencil or hachure marks on the plat below.
2. If more than one lease is dedicated to the well, outline each and identify the ownership thereof (both as to working interest and royalty). See EXHIBIT "A".
3. If more than one lease of different ownership is dedicated to the well, have the interests of all owners been consolidated by communitization, unitization, force-pooling, etc?

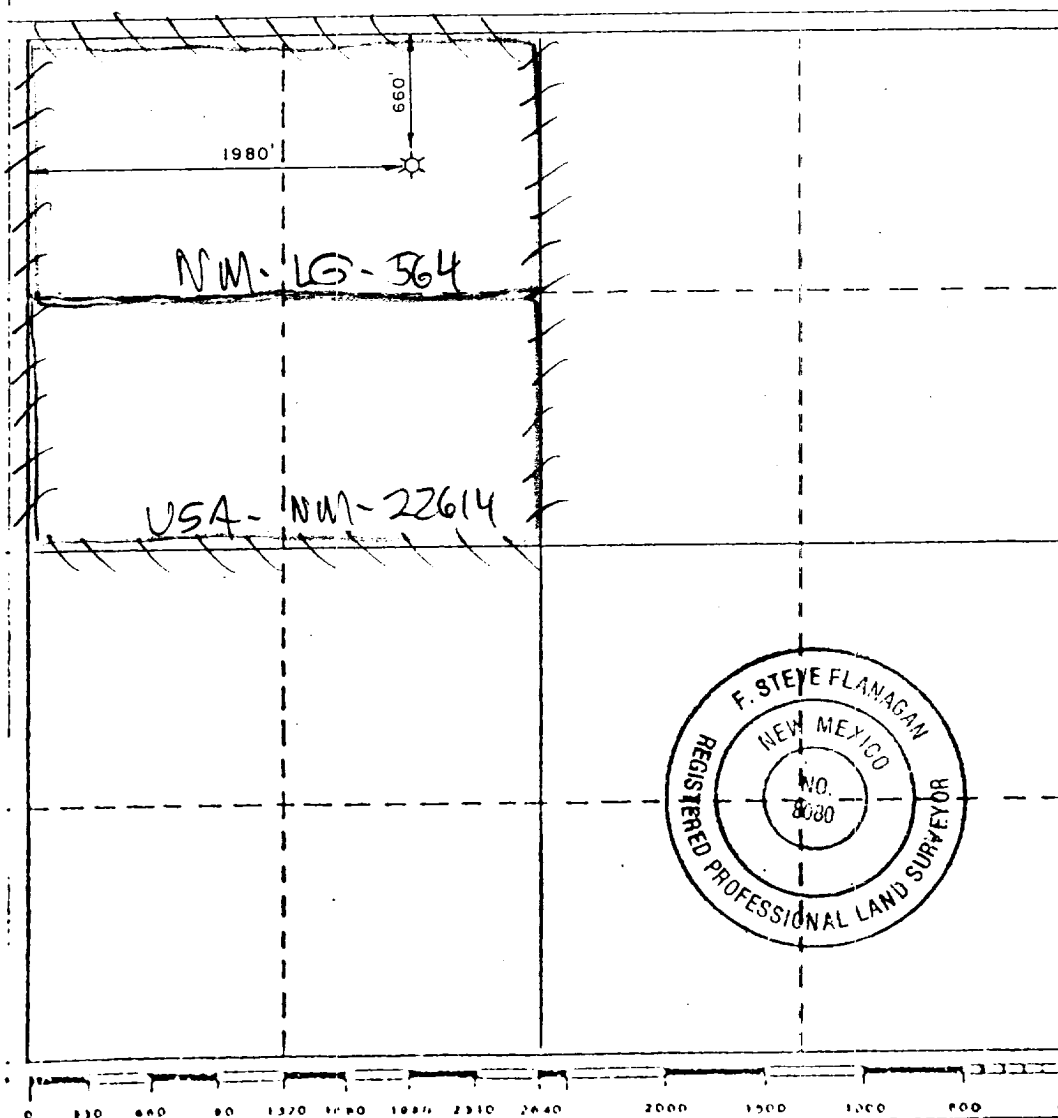
☒ Yes ☐ No

If answer is "yes," type of consolidation

Communitization

If answer is "no," list the owners and tract descriptions which have actually been consolidated. (Use reverse side of this form if necessary.)

No allowable will be assigned to the well until all interests have been consolidated (by communitization, unitization, forced-pooling, or otherwise) or until a non-standard unit, eliminating such interests, has been approved by the Division.



CERTIFICATION

I hereby certify that the information contained herein is true and complete to the best of my knowledge and belief.

Name

Position

Company

Date

I hereby certify that the well location shown on this plat was plotted from field notes of actual surveys made by me or under my supervision, and that the same is true and correct to the best of my knowledge and belief.

Date Surveyed

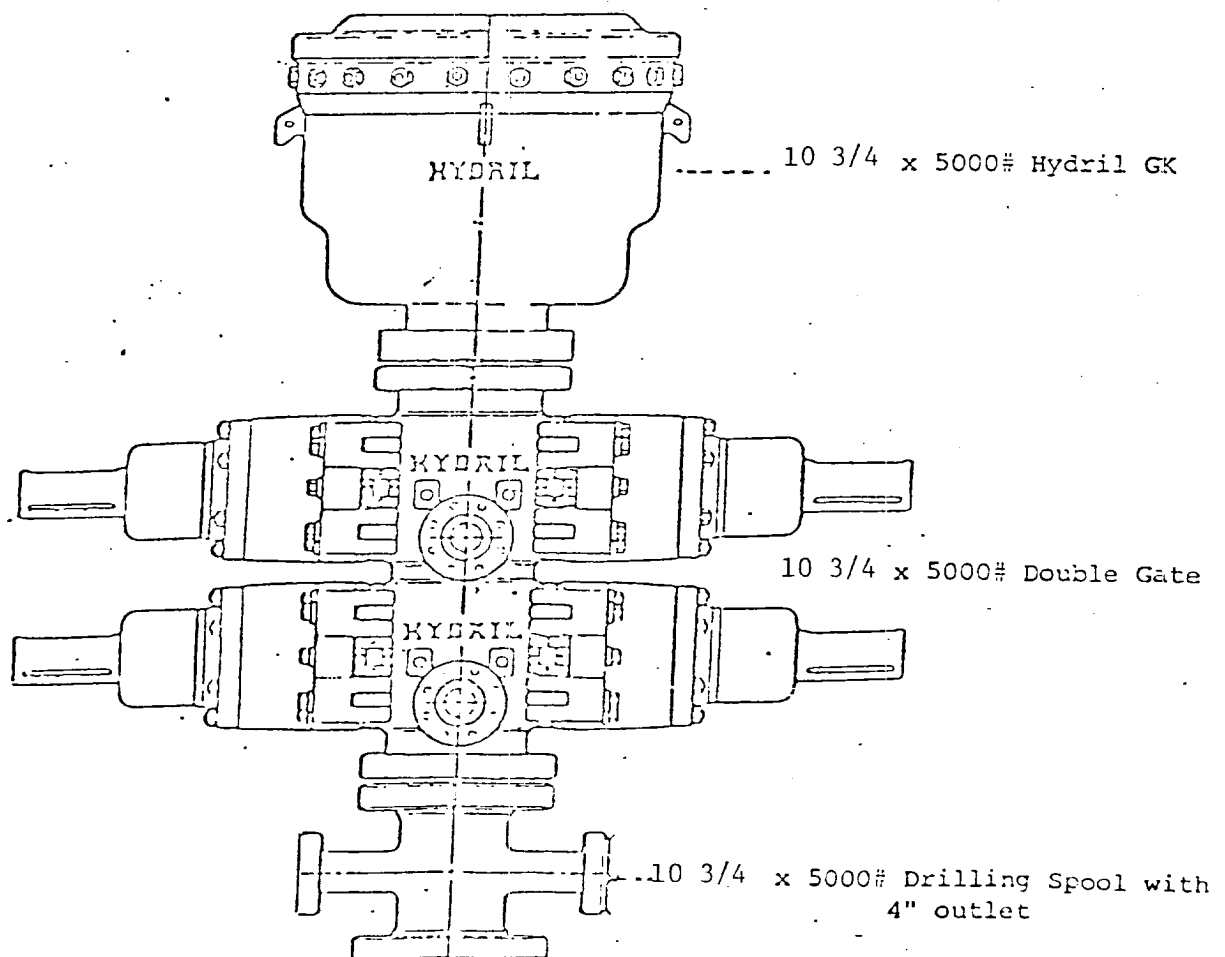
February 8, 1983

Registered Professional Engineer
and/or Land Surveyor

Certificate No.

8080

B.O.P. Stack



All items H₂S trimmed

EXHIBIT "A"

	<u>ACRES</u>	<u>% OF UNIT</u>	<u>INITIAL TEST WELL BEFORE PAYOUT</u>	<u>INITIAL TEST WELL AFTER PAYOUT</u>
US-A-NM- 22614	M. J. HARVEY, JR. 80.00	49.844237%	F/O	24.922119%
	YATES PETROLEUM CORPORATION -0-	-0-	9.968848	4.984424
	JOHN A. YATES -0-	-0-	9.968848	4.984424
	MARTIN YATES, III -0-	-0-	6.230530	3.115265
	MYCO INDUSTRIES, INC. -0-	-0-	6.230530	3.115265
	S. P. YATES -0-	-0-	4.984424	2.492212
	YATES DRILLING COMPANY -0-	-0-	2.990654	1.495327
	LOS CHICOS, A PARTNERSHIP -0-	-0-	2.492212	1.246106
	WEED OIL AND GAS, A PARTNERSHIP -0-	-0-	1.495327	.747564
	PEYTON YATES -0-	-0-	.996884	.498442
	RICHARD YATES -0-	-0-	.996884	.498442
	MARICO EXPLORATION, INC. -0-	-0-	.996884	.498442
	YATES EMPLOYEES 80, LTD. -0-	-0-	2.492212	1.246106
NM-LG-564	-JJ-CC LIMITED, a Colorado limited partnership 80.50	50.155763	50.155763	50.155763
	<u>160.50</u>	<u>100.000000%</u>	<u>100.000000%</u>	<u>100.000000%</u>