

COPY

SUBMIT IN TRIPlicate*
(Other instructions on
reverse side)

30-005-61937

Form approved.
Budget Bureau No. 42-R1425.

D37

NM OIL CONS. COMMISSIONED STATES
Drawer DD DEPARTMENT OF THE INTERIOR
Artesia, NM 88210
GEOLOGICAL SURVEY

APPLICATION FOR PERMIT TO DRILL, DEEPEN, OR PLUG BACK

1a. TYPE OF WORK

DRILL ☒DEEPEN ☐PLUG BACK ☐

b. TYPE OF WELL

OIL
WELL ☒GAS
WELL ☐OTHER ☐

FEB 18 1982

MULTIPLE
ZONE ☐

2. NAME OF OPERATOR

DWIGHT A. TIPTON

O. C. D.

3. ADDRESS OF OPERATOR

ARTESIA, OFFICE

P.O. BOX 1597, LOVINGTON, NEW MEXICO 88260

4. LOCATION OF WELL (Report location clearly and in accordance with any State requirements.)*
At surface

1980' FSL AND 1855' FEL OF SECTION 29

NWSE

At proposed prod. zone

14. DISTANCE IN MILES AND DIRECTION FROM NEAREST TOWN OR POST OFFICE*

5 MILES SOUTHEAST OF HAGERMAN, NEW MEXICO

15. DISTANCE FROM PROPOSED*

LOCATION TO NEAREST
PROPERTY OR LEASE LINE, FT.
(Also to nearest drlg. unit line, if any)

660'

16. NO. OF ACRES IN LEASE

480

17. NO. OF ACRES ASSIGNED
TO THIS WELL

40

18. DISTANCE FROM PROPOSED LOCATION*

TO NEAREST WELL, DRILLING, COMPLETED,
OR APPLIED FOR, ON THIS LEASE, FT.

-

19. PROPOSED DEPTH

1800'

20. ROTARY OR CABLE TOOLS

CABLE TOOLS

21. ELEVATIONS (Show whether DF, RT, GR, etc.)

3434.6 GR

22. APPROX. DATE WORK WILL START*

UPON APPROVAL

23. PROPOSED CASING AND CEMENTING PROGRAM

SIZE OF HOLE	SIZE OF CASING	WEIGHT PER FOOT	SETTING DEPTH	QUANTITY OF CEMENT
10"	8-5/8"	24# H-40	300'	SUFFICIENT TO CIRCULATE
8"	5-1/2"	17# J-55	1800'	SUFFICIENT TO CIRCULATE

PRODUCING ZONE WILL BE PERFORATED AND STIMULATED AS NECESSARY.

SEE ATTACHED FOR: SUPPLEMENTAL DRILLING DATA
SURFACE USE AND OPERATIONS PLANRECEIVED
APR 21 1982ON 3 GAS
U.S. GEOLOGICAL SURVEY
LOS ALAMOS, NEW MEXICO

IN ABOVE SPACE DESCRIBE PROPOSED PROGRAM: If proposal is to deepen or plug back, give data on present productive zone and proposed new productive zone. If proposal is to drill or deepen directionally, give pertinent data on subsurface locations and measured and true vertical depths. Give blowout preventer program, if any.

24.

SIGNED

Arthur R. Brown

TITLE

Agent for
DWIGHT A. TIPTON

DATE APRIL 16, 1982

(This space for Federal or State use only)

PERMIT NO.

APPROVAL DATE

APPROVED BY

CONDITIONS OF APPROVAL, IF ANY:

(Orig. Sgd.) GEORGE H. STEWART
MAY 3 1982JAMES A. GILLHAM
DISTRICT SUPERVISOR

NOTED: BRYAN

NEW MEXICO OIL CONSERVATION COMMISSION
WELL LOCATION AND ACREAGE DEDICATION PLAT

Form O-117
Superseded O-128
Effective 1-1-82

Acres shown must be from the outer boundaries of the Section.

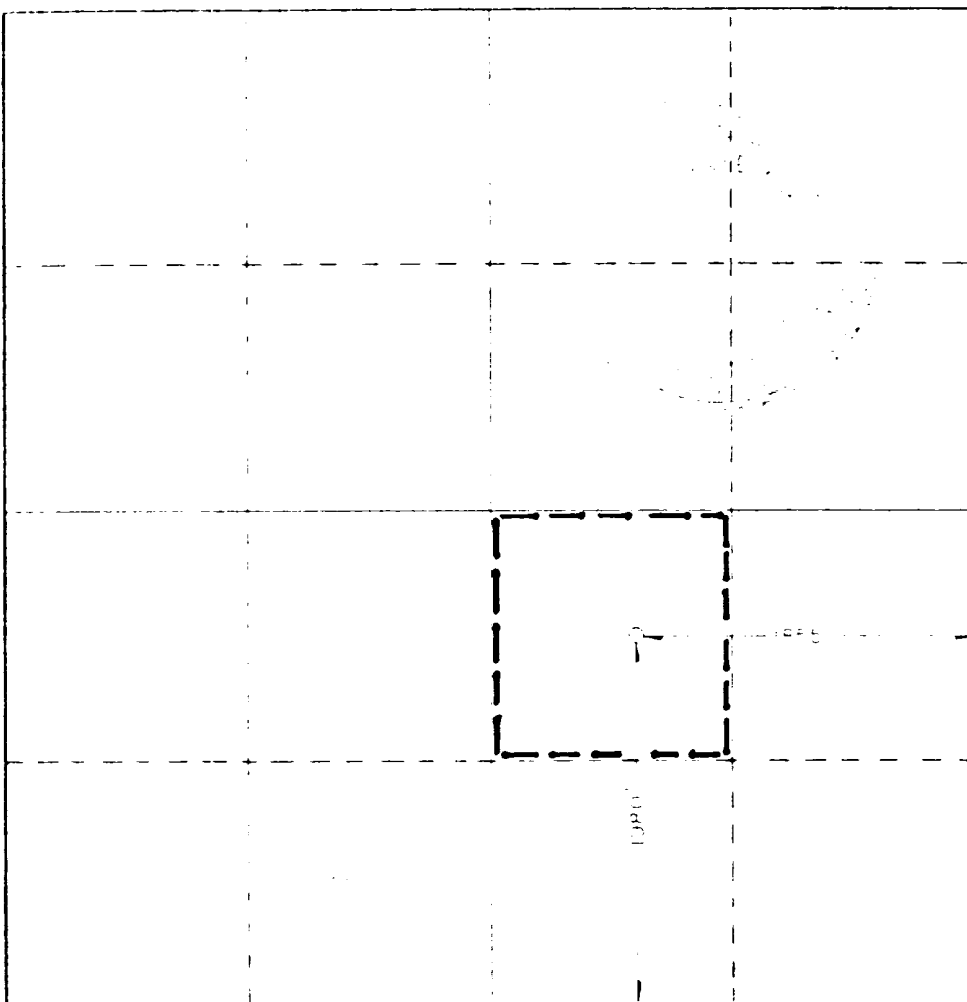
Dwight A. Tipton		Hagerman 29 Fed.		2
J	29	14 South	27 East	Chaves
1980	South	1855	East	
3434.6'	SAN ANDRES	WILDCAT	40	

1. Outline the acreage dedicated to the subject well by colored pencil or hatchure marks on the plat below.
2. If more than one lease is dedicated to the well, outline each and identify the ownership thereof (both as to working interest and royalty).
3. If more than one lease of different ownership is dedicated to the well, have the interests of all owners been consolidated by communitization, unitization, force-pooling, etc?

Yes ☐ No ☒ If answer is "yes," type of consolidation _____

If answer is "no," list the owners and tract descriptions which have actually been consolidated. (Use reverse side of this form if necessary.) _____

No allowance will be assigned to the well until all interests have been consolidated (by communitization, unitization, forced-pooling, or otherwise) or until a non-standard unit, eliminating such interests, has been approved by the Commission.



CERTIFICATION

I hereby certify that the information contained herein is true and complete to the best of my knowledge and belief.

Arthur R. Brown
Arthur R. Brown

Position

Agent for

Company

DWIGHT A. TIPTON

Date

APRIL 16, 1982

I hereby certify that the well location shown on this plat was plotted from field notes of actual surveys made by me or under my supervision, and that the same is true and correct to the best of my knowledge and belief.

Date Surveyed

4-15-82

Registered Professional Engineer
and or Land Surveyor

John W. West

Certificate No. JOHN W. WEST 676
PATRICK A. ROMERO 6868

SUPPLEMENTAL DRILLING DATA

DWIGHT A. TIPTON

WELL NO.2 HAGERMAN 29 FEDERAL

1. SURFACE FORMATION: Guadalupe (Undifferentiated)

2. TOPS OF GEOLOGIC MARKERS:

Grayburg 820'
San Andres 1172'

3. ANTICIPATED POSSIBLE HYDROCARBON BEARING ZONES:

Grayburg Oil
San Andres Oil

4. PROPOSED CASING AND CEMENTING PROGRAM:

CASING SIZE	SETTING DEPTH		WEIGHT	GRADE	JOINT
	FROM	TO			
8-5/8"	0	300'	24#	H-40	STC
5-1/2"	0	1800'	17#	J-55	STC

8-5/8" casing will be cemented with sufficient Class "C" cement to circulate to surface.

5-1/2" casing will be cemented with sufficient Class "C" cement to circulate to surface.

5. PRESSURE CONTROL EQUIPMENT:

This is a cable tool hole. Pressure control equipment will consist of a control calve and oil saver.

6. CIRCULATING MEDIUM:

This is a cable tool hole. Water will be the drilling fluid.

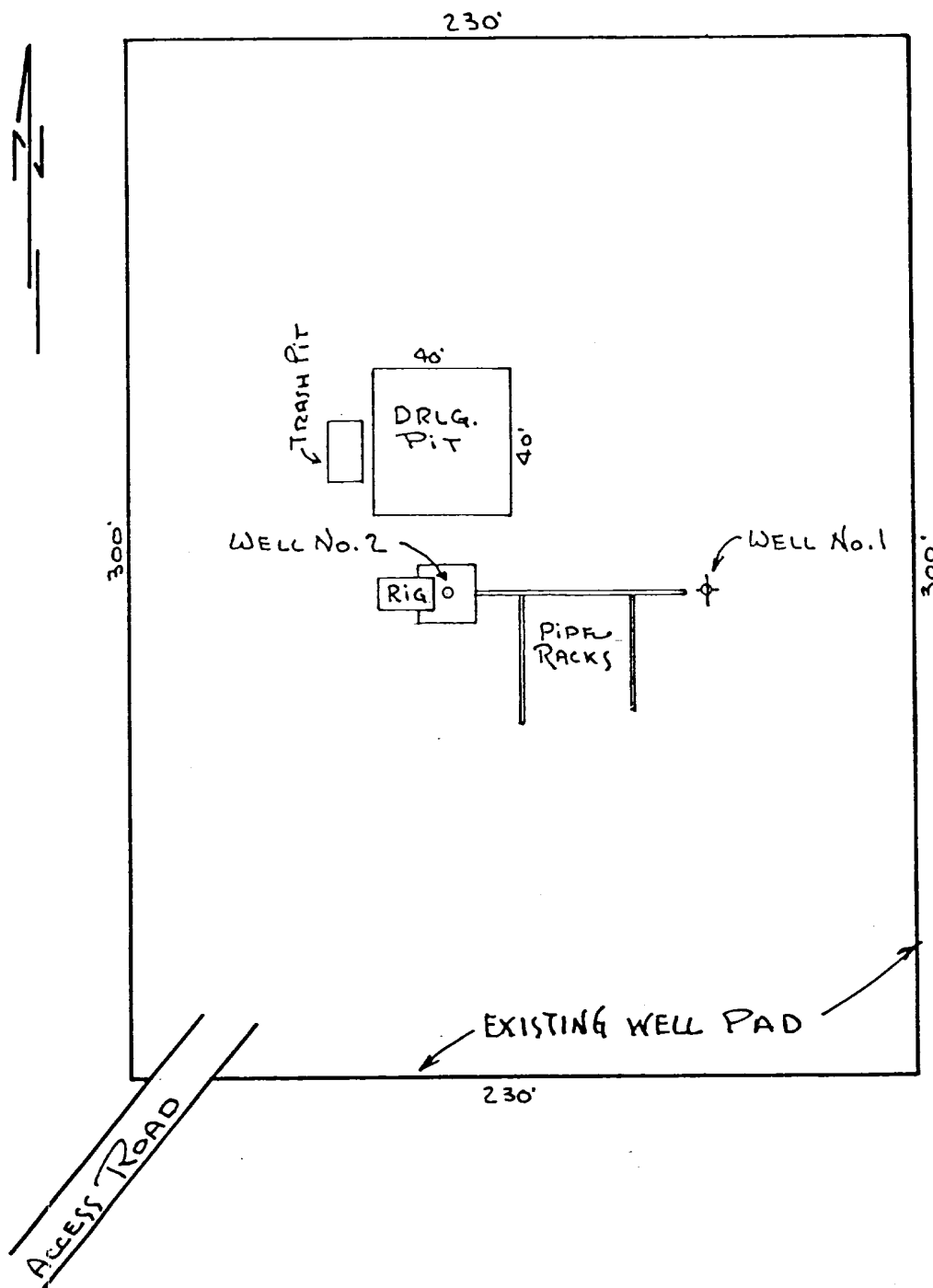
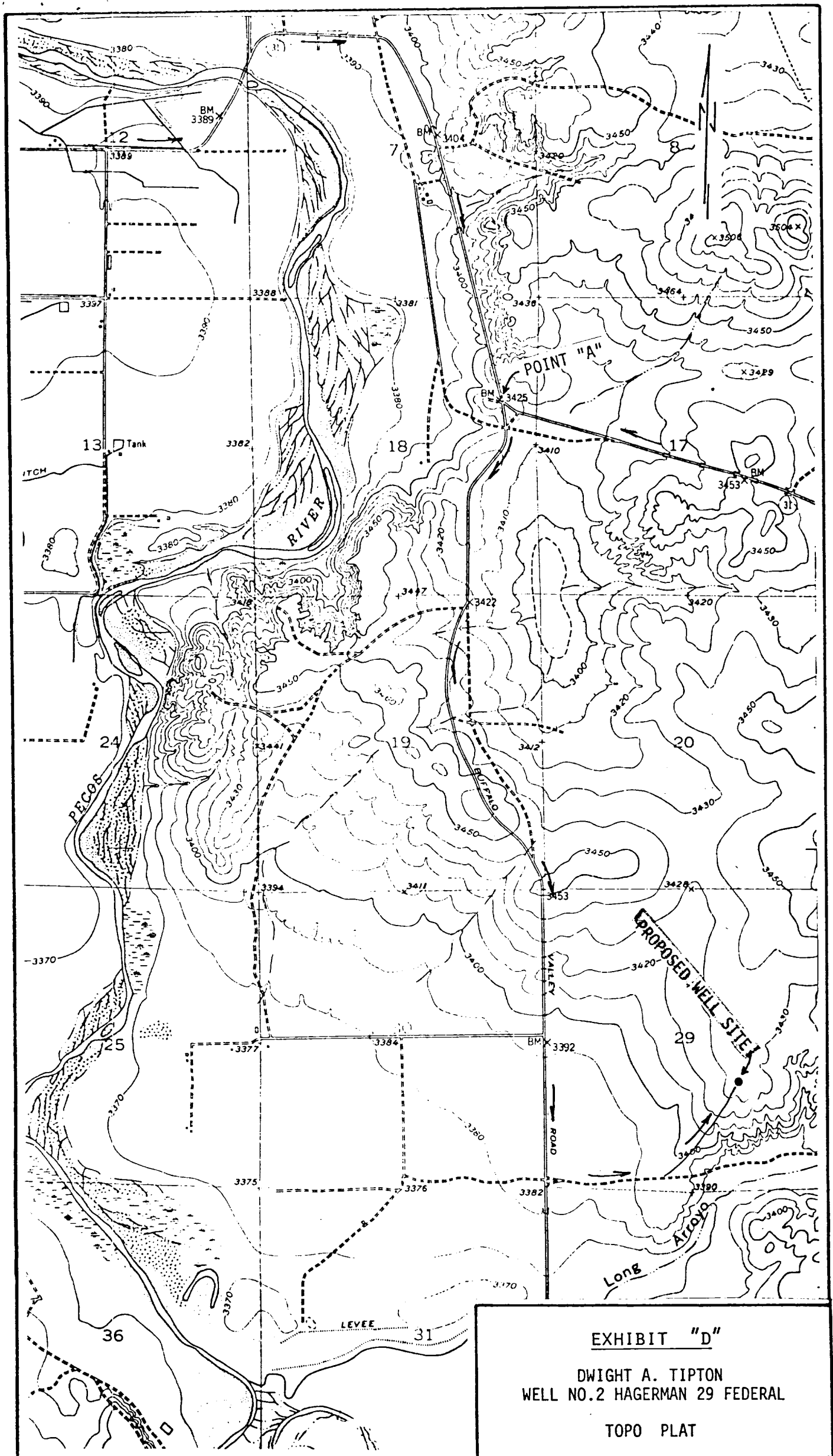


EXHIBIT "C"

DWIGHT A. TIPTON
WELL NO.2 HAGERMAN 29 FEDERAL
1980'FSL & 1855'FEL SEC.29, T.14 S., R.27 E.
CHAVES COUNTY, N.M. SCALE: 1" = 50'



ARTHUR R. BROWN
101 E. Marland
Hobbs, New Mexico 88240
Office (505) 397-2767
Home (505) 392-5642

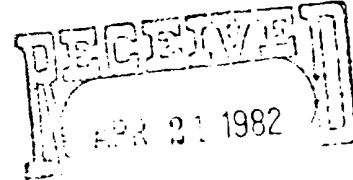
JAMES A. KNAUF
1501 W. Missouri
Artesia, New Mexico 88210
Phone (505) 746-4138

PETROLEUM
ENGINEERING & REGULATORY
SERVICES

101 E. Marland, Suite 105
Hobbs, New Mexico 88240

April 19, 1982

Minerals Management Service
P.O. Drawer 1857
Roswell, New Mexico 88201



Gentlemen:

Enclosed is Dwight A. Tipton's Application for Permit to Drill well No.2 Hagerman 29 Federal, lease NM-16094

OIL & GAS
U.S. GEOLOGICAL SURVEY
FEDERAL BUREAU OF MINES

Tipton re-entered the original well drilled on this lease by Southland Royalty, however it is not believed that a fair test of formations perforated was obtained because of communication behind the pipe. Plans now are to drill a new well 75 feet west of the original well. All operations will be within the area of the original well pad, and no new surface disturbance will be necessary.

A designation of operator form should be on file.

Archaeological clearance of the well site and access road was obtained prior to drilling the original well.

If there are any questions concerning this application, or if any additional information is needed, please let me know.

Sincerely,

A handwritten signature in cursive script, reading "Arthur R. Brown". The signature is fluid and stylized, with a prominent "A" and "B".

Arthur R. Brown, Agent for
DWIGHT A. TIPTON

ARB/bb