

C/87

UNITED STATES
DEPARTMENT OF THE INTERIOR
GEOLOGICAL SURVEY

Drawer DD

Artesia, NM

88210 LEASE

SUNDRY NOTICES AND REPORTS ON WELLS

(Do not use this form for proposals to drill or to deepen or plug back to a different reservoir. Use Form 9-331-C for such proposals.)

1. oil well ☐ gas well ☒ other

2. NAME OF OPERATOR

Yates Petroleum Corporation

3. ADDRESS OF OPERATOR

207 S. 4th, Artesia, New Mexico

4. LOCATION OF WELL (REPORT LOCATION CLEARLY. See space 17 below.)

AT SURFACE: 2080' FSL and 2130' FEL

AT TOP PROD. INTERVAL:

AT TOTAL DEPTH:

same

16. CHECK APPROPRIATE BOX TO INDICATE NATURE OF NOTICE, REPORT, OR OTHER DATA

REQUEST FOR APPROVAL TO:

SUBSEQUENT REPORT OF:

TEST WATER SHUT-OFF ☐

FRACTURE TREAT ☐

SHOOT OR ACIDIZE ☐

REPAIR WELL ☐

PULL OR ALTER CASING ☐

MULTIPLE COMPLETE ☐

CHANGE ZONES ☐

ABANDON* ☐

(other) Change location

NM-10458

6. IF INDIAN, ALLOTTEE OR TRIBE NAME

7. UNIT AGREEMENT NAME

8. FARM OR LEASE NAME

DUNCAN "LH" Federal

9. WELL NO.

2

10. FIELD OR WILDCAT NAME

Under Pecos Slope Abo

11. SEC., T., R., M., OR BLK. AND SURVEY OR AREA

Sec. 3-T8S-R25E

12. COUNTY OR PARISH

Chaves

13. STATE

NM

14. API NO.

15. ELEVATIONS (SHOW DF, KDB, AND WD)

3609.1' GL

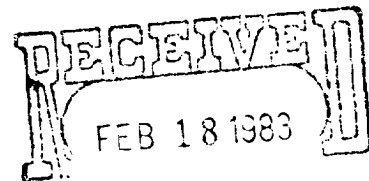
(NOTE: Report results of multiple completion or zone change on Form 9-330.)

17. DESCRIBE PROPOSED OR COMPLETED OPERATIONS (Clearly state all pertinent details, and give pertinent dates, including estimated date of starting any proposed work. If well is directionally drilled, give subsurface locations and measured and true vertical depths for all markers and zones pertinent to this work.)*

Location moved per BLM for archaeological site NMAS #5469.

From: 1980' FSL and 1980' FEL

To: 2080' FSL and 2130' FEL



OIL & GAS
U.S. GEOLOGICAL SURVEY
ROSWell, NEW MEXICO

Subsurface Safety Valve: Manu. and Type

Set @ Ft.

18. I hereby certify that the foregoing is true and correct

SIGNED Ker Bardenheer TITLE Regulatory Agent

DATE 2/9/83

(This space for Federal or State office use)

APPROVED BY JAMES A. GILLHAM
CONDITIONS OF APPROVAL, IF ANY:

TITLE

DATE

FEB 18 1983

JAMES A. GILLHAM
DISTRICT SUPERVISOR

*See Instructions on Reverse Side

Posted 2/9/83
JAG-1 & 2 f Book
2-25-83

**NEW MEXICO OIL CONSERVATION COMMISSION
WELL LOCATION AND ACREAGE DEDICATION PLAT**

Form C-102
Supersedes C-128
Effective 1-1-65

All distances must be from the outer boundaries of the Section.

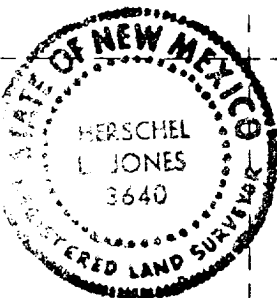
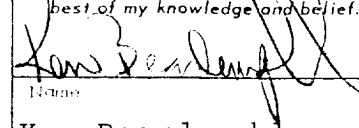
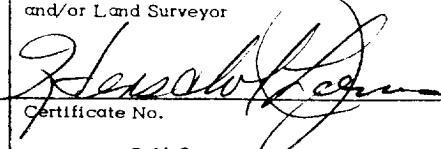
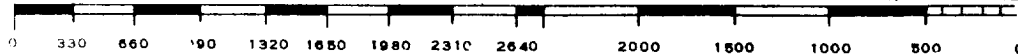
Operator YATES PETROLEUM CORPORATION			Lease Duncan "LH" Federal		Well No. 2
But Letter J	Section 3	Township 8 South	Range 25 East	County Chaves	
Actual Footage Location of Well:					
2080 feet from the South line and 2130 feet from the East line					
Ground Level Elev. 3609.1'	Producing Formation Ab	Pool Unit	Dedicated Acreage: 160		Acres

1. Outline the acreage dedicated to the subject well by colored pencil or hachure marks on the plat below.
2. If more than one lease is dedicated to the well, outline each and identify the ownership thereof (both as to working interest and royalty).
3. If more than one lease of different ownership is dedicated to the well, have the interests of all owners been consolidated by communitization, unitization, force-pooling, etc?

☐ Yes ☐ No If answer is "yes," type of consolidation _____

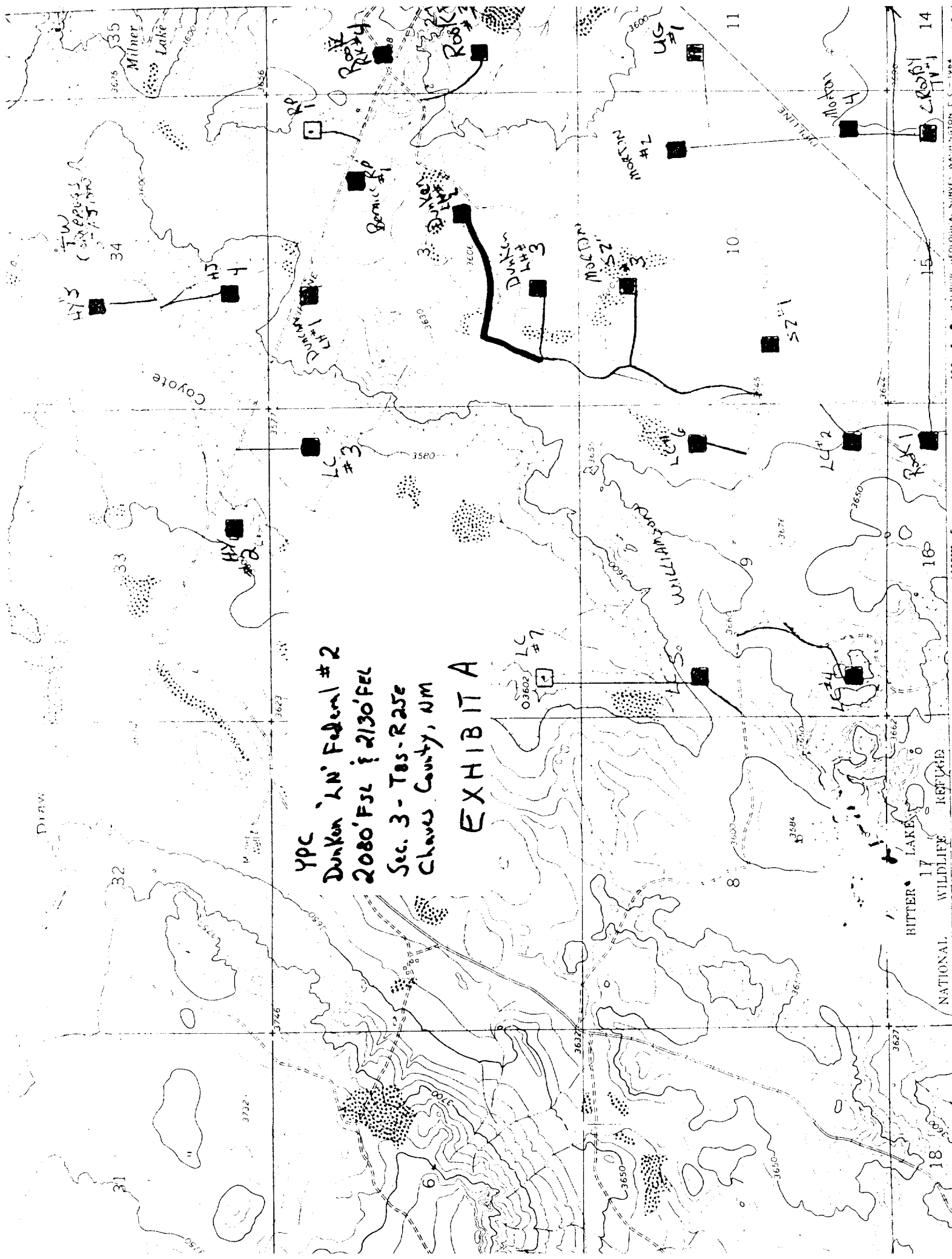
If answer is "no," list the owners and tract descriptions which have actually been consolidated. (Use reverse side of this form if necessary.) _____

No allowable will be assigned to the well until all interests have been consolidated (by communitization, unitization, forced-pooling, or otherwise) or until a non-standard unit, eliminating such interests, has been approved by the Commission.

 <div style="border: 2px solid black; width: 150px; height: 150px; margin: auto; position: relative;"> <div style="position: absolute; top: 0; left: 0; width: 100%; height: 100%; border: 1px dashed black;"></div> <div style="position: absolute; top: 50%; left: 50%; transform: translate(-50%, -50%); font-size: 2em;">•</div> </div> <div style="text-align: right; font-size: 1.5em;">YATES NM-10458</div>	CERTIFICATION I hereby certify that the data contained herein is true and complete to the best of my knowledge and belief.  Name Ken Beardemph Position Regulatory Agent Company Yates Petroleum Corp. Date 2/09/83	
	I hereby certify that the well location shown on this plat was plotted from field notes of actual surveys made by me or under my supervision, and that the same is true and correct to the best of my knowledge and belief. February 8, 1983 Date Surveyed	
	Registered Professional Engineer and/or Land Surveyor  Certificate No. 3640	
		
	3640	

YPC
 Dunken LN Federal #2
 2080' FSL & 2130' FEL
 Sec. 3 - T8S-R25E
 Chaves County, NM

EXHIBIT A



NM OIL CONS. COMMISSION

Drawer DD

Artesia, NM 88210

UNITED STATES
DEPARTMENT OF THE INTERIOR

GEOLOGICAL SURVEY

RECEIVED

SUBMIT IN L. LOCATE*

(Other instructions on

FEB 23 1983

Form approved.
Budget Bureau No. 42-R1425.

30-005-61939

APPLICATION FOR PERMIT TO DRILL, DEEPEN, OR PLUG BACK

1a. TYPE OF WORK

DRILL ☒DEEPEN ☐PLUG BACK ☐

b. TYPE OF WELL

OIL ☐GAS ☒OTHER ☐

2. NAME OF OPERATOR

Yates Petroleum Corporation ✓

3. ADDRESS OF OPERATOR

207 S. 4th, Artesia, New Mexico

4. LOCATION OF WELL (Report location clearly and in accordance with any State or Federal requirements)

1980' FSL and 1980' FEL

At proposed prod. zone

same

14. DISTANCE IN MILES AND DIRECTION FROM NEAREST TOWN OR POST OFFICE*

Approximately 33 miles NNE of Roswell, NM.

15. DISTANCE FROM PROPOSED*

LOCATION TO NEAREST
PROPERTY OR LEASE LINE, FT.
(Also to nearest drlg. unit line, if any)

1980'

16. NO. OF ACRES IN LEASE

480

18. DISTANCE FROM PROPOSED LOCATION*
TO NEAREST WELL, DRILLING COMPLETED,
OR APPLIED FOR, ON THIS LEASE, FT.

19. PROPOSED DEPTH

4175'

17. NO. OF ACRES ASSIGNED
TO THIS WELL

160

20. ROTARY OR CABLE TOOLS

Rotary

21. ELEVATIONS (Show whether DF, RT, GR, etc.)

3615.' GL

22. APPROX. DATE WORK WILL START*

ASAP

PROPOSED CASING AND CEMENTING PROGRAM

SIZE OF HOLE	SIZE OF CASING	WEIGHT PER FOOT	SETTING DEPTH	QUANTITY OF CEMENT
14 3/4"	10 3/4"	40.5# J-55	775'	520 sx circulated
7 7/8"	4 1/2"	9.5#	TD	350 sx

We propose to drill and test the Abo and intermediate formations. Approximately 775' of surface casing will be set and cement circulated to shut off gravel and caving. If needed (lost circulation) 8 5/8" intermediate casing will be run to 1500' and cemented with enough cement calculated to tie back into the surface casing. If commercial, production casing will be run and cemented with adequate cover, perforated and stimulated as needed for production.

MUD PROGRAM: FW gel/LCM to 775', Brine to 3200', Brine/KCL water to TD.

BOP PROGRAM: BOP's will be installed at the offset and tested daily.

GAS NOT DEDICATED.

IN ABOVE SPACE DESCRIBE PROPOSED PROGRAM: If proposal is to deepen or plug back, give data on present productive zone and proposed new productive zone. If proposal is to drill or deepen directionally, give pertinent data on subsurface locations and measured and true vertical depths. Give blowout preventer program, if any.

24.

SIGNED

TITLE Regulatory Agent

DATE 1/10/83

(This space for Federal or State office use)

PERMIT NO.

APPROVAL DATE

APPROVED BY

CONDITIONS OF APPROVAL, IF ANY

APPROVED

FEB 18 1983

JAMES A. GILLHAM
DISTRICT SUPERVISORAPPROVAL SUBJECT TO
GENERAL REQUIREMENTS AND
SPECIAL STIPULATIONS
ATTACHED

NEW MEXICO OIL CONSERVATION COMMISSION
WELL LOCATION AND ACREAGE DEDICATION PLAT

Form C-102
Supersedes C-128
Effective 1-1-65

All distances must be from the outer boundaries of the Section.

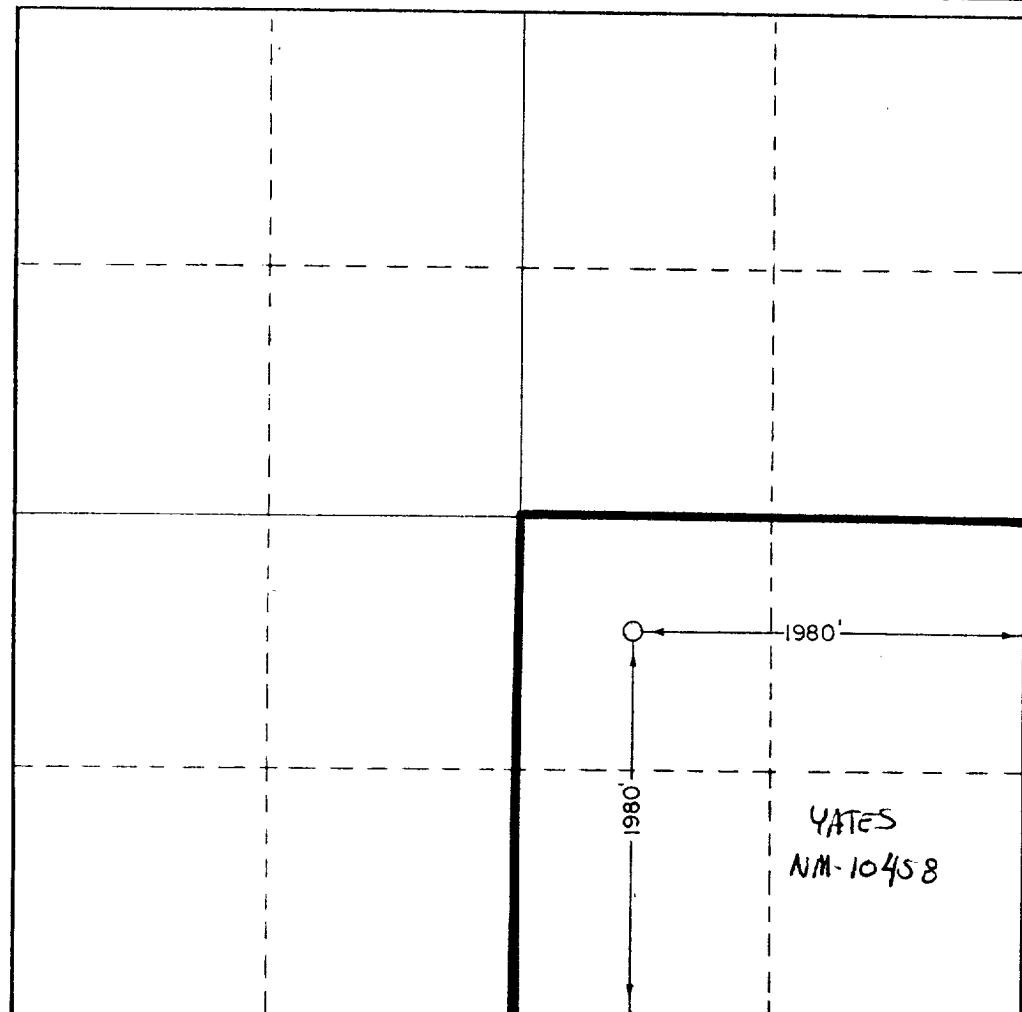
Operator YATES PETROLEUM CORPORATION			Lease Duncan "LH" Federal		Well No. 2
Unit Letter J	Section 3	Township 8 South	Range 25 East	County Chaves	
Actual Portage Location of Well: 1980 feet from the South line and 1980 feet from the East line					
Ground Level Elev. 3615.0'	Producing Formation Abo		Pool Dallas Pecos Slope Abo		Dedicated Acreage: 160 Acres

1. Outline the acreage dedicated to the subject well by colored pencil or hatchure marks on the plat below.
2. If more than one lease is dedicated to the well, outline each and identify the ownership thereof (both as to working interest and royalty).
3. If more than one lease of different ownership is dedicated to the well, have the interests of all owners been consolidated by communitization, unitization, force-pooling, etc?

☐ Yes ☐ No If answer is "yes," type of consolidation _____

If answer is "no," list the owners and tract descriptions which have actually been consolidated. (Use reverse side of this form if necessary.) _____

No allowable will be assigned to the well until all interests have been consolidated (by communitization, unitization, forced-pooling, or otherwise) or until a non-standard unit, eliminating such interests, has been approved by the Commission.



CERTIFICATION

I hereby certify that the information contained herein is true and complete to the best of my knowledge and belief.

Ken Beardemphl
Name

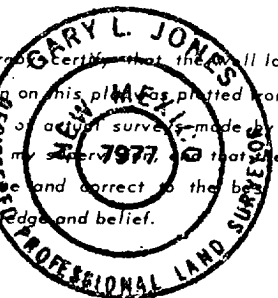
Ken Beardemphl
Position

Regulatory Agent
Company

Yates Petroleum Corp.
Date

1/10/83

I hereby certify that the well location shown on this plat was plotted from field notes of actual surveys made by me or under my supervision and that the same is true and correct to the best of my knowledge and belief.



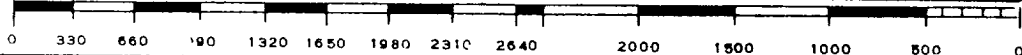
Date Surveyed

January 4, 1983

Registered Professional Engineer and/or Land Surveyor

Sam L. Jones
Certificate No.

7977



YATES PETROLEUM CORPORATION

Duncan "LH" Federal #2
1980' FSL and 1980' FEL
Sec. 3-T8S-R25E

In conjunction with Form 9-331C, Application for Permit to Drill subject well, Yates Petroleum Corporation submits the following ten items of pertinent information in accordance with USGS requirements.

1. The geologic surface formation is quaternary alluvium.
2. The estimated tops of geologic markers are as follows:

San Andres	358'
Glorieta	1458'
Fullerton	2868'
Abo	3558'
TD	4175'

3. The estimated depths at which anticipated water, oil or gas formations are expected to be encountered:

Water: 225' approximately.

Oil or Gas: Abo 3585'.

4. Proposed Casing Program: See Form 9-331C.
5. Pressure Control Equipment: See Form 9-331C and Exhibit B.
6. Mud Program: See Form 9-331C.
7. Auxiliary Equipment: Kelly Cock; pit level indicators and flow sensor equipment;
sub with full-opening valve on floor, drill pipe connection.
8. Testing, Logging and Coring Program:

Samples: Surface casing to TD.

DST's: As warranted.

Coring: None

Logging: CNL-FDC TD to csg w/GR-CNL to surface & DLL from TD to csg.

9. No abnormal pressures or temperatures are anticipated.
10. Anticipated starting date: As soon as possible after approval.

YPC
 Dunken 'LW' Federal #2
 1980' FSL & 1980' FEL
 Sec. 3 - T8S-R25E
 Chaves County, NM

EXHIBIT A

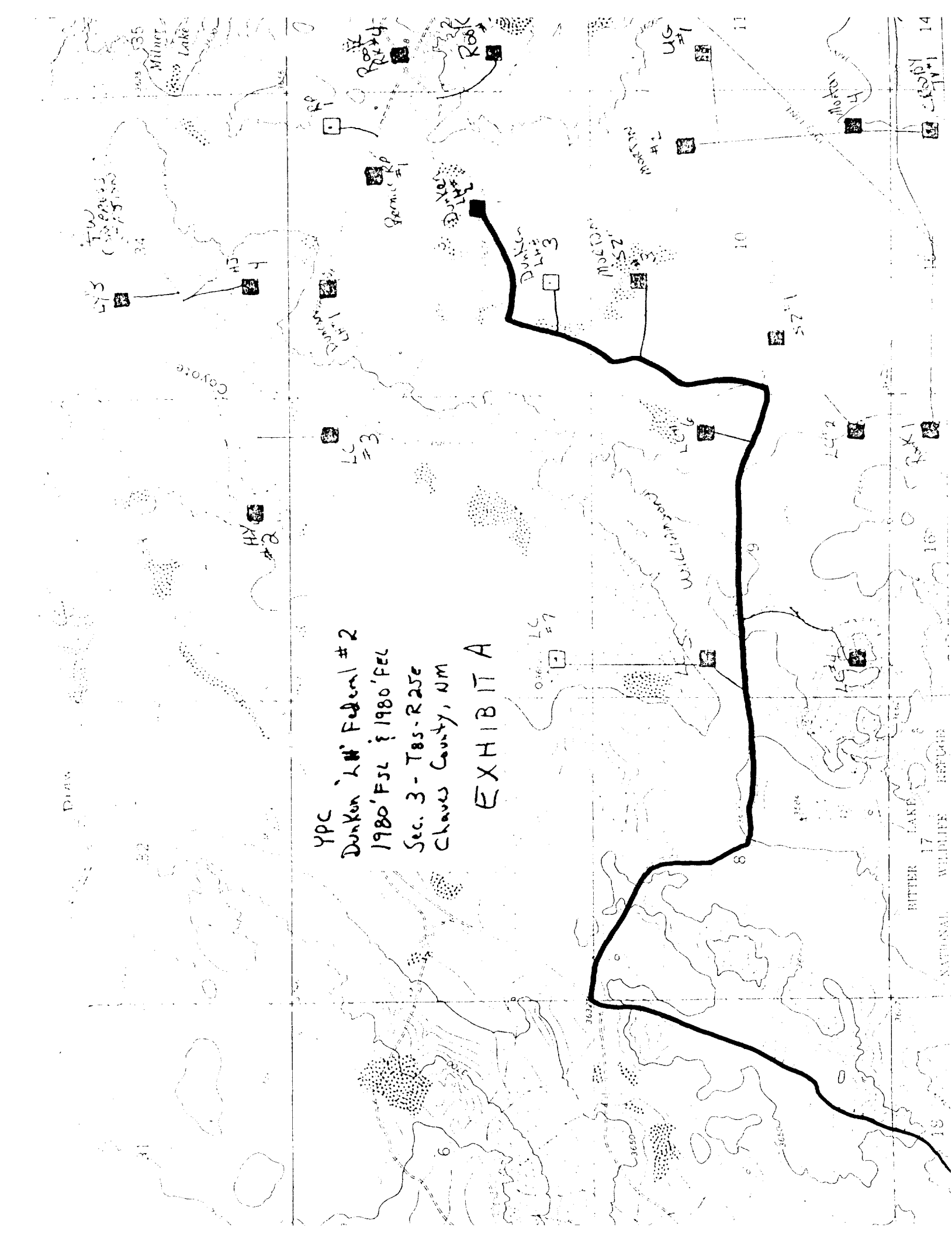
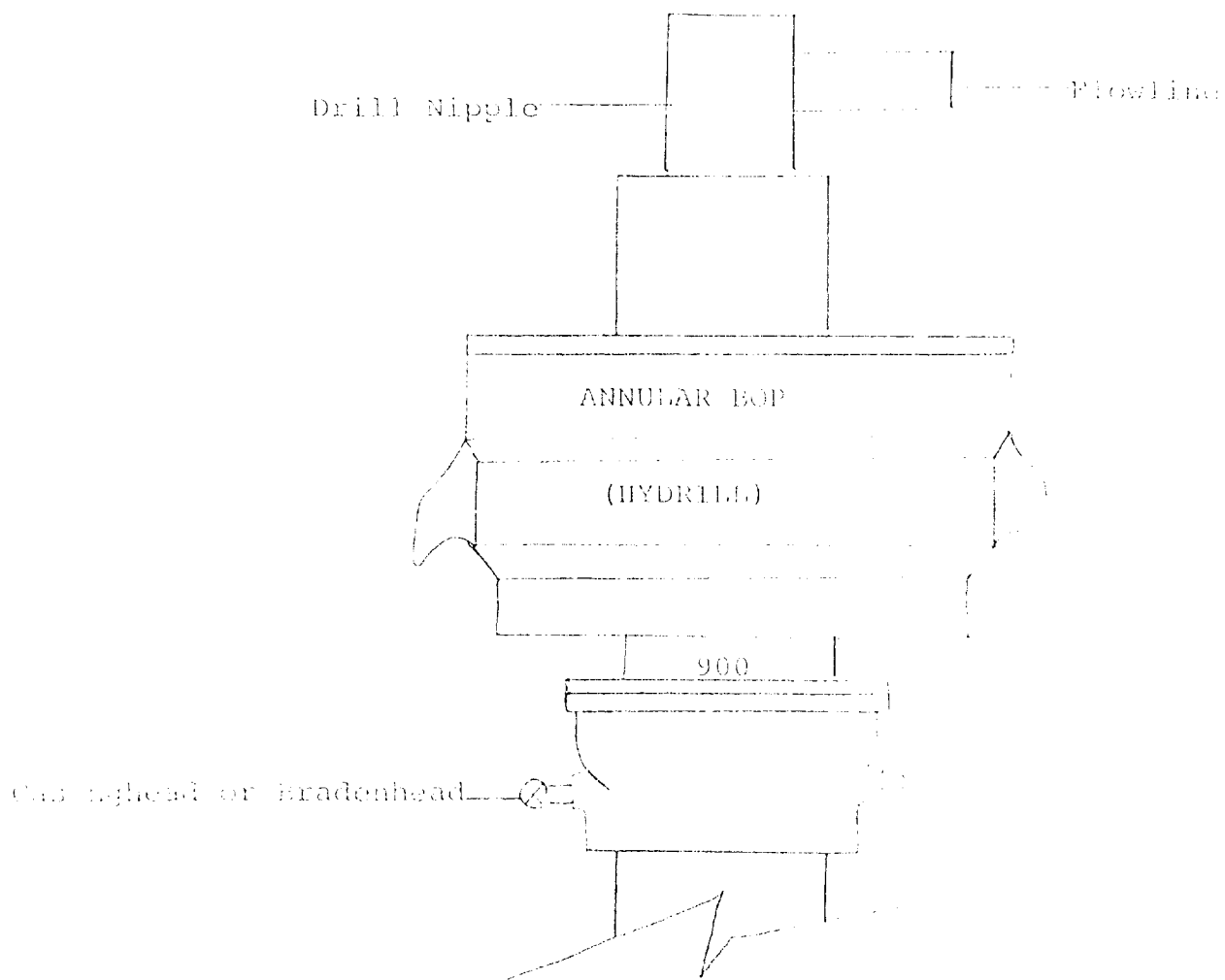


Exhibit B



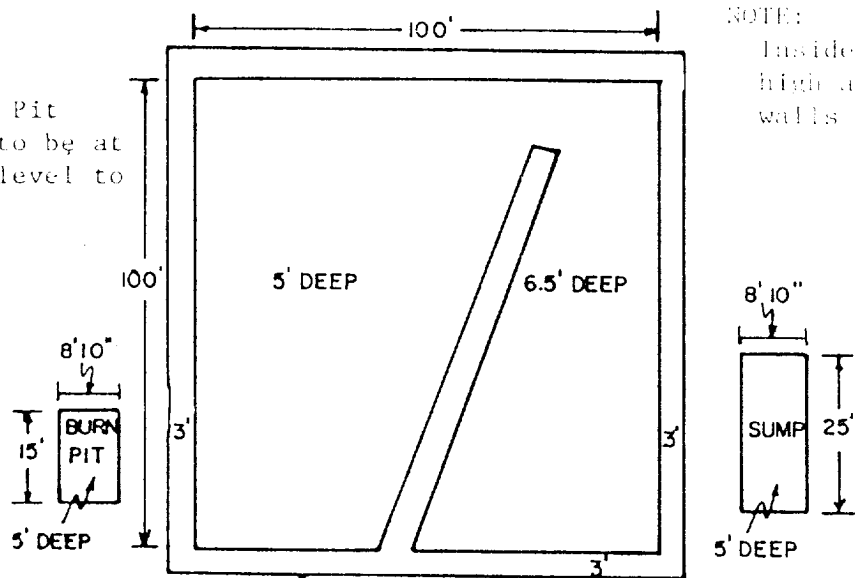
THE FOLLOWING CONSTITUTE MINIMUM BLOWOUT PREVENTER REQUIREMENTS

1. All preventers to be hydraulically operated with secondary manual controls installed prior to drilling out from under casing.
2. All connections from operating manifolds to preventers to be all steel. Hole or tube a minimum of one inch in diameter.
3. The available closing pressure shall be at least 15% in excess of that required with sufficient volume to operate the BOP's.
4. All connections to and from preventer to have a pressure rating equivalent to that of the BOP's.
5. Hole must be kept filled on trips below intermediate casing.

YATES PETROLEUM CORP.

Exhibit C

Reserve Pit
bottom to be at
ground level to
1 ft.



NOTE:

Inside walls must be as
high and wide as outer
walls of pit.

