

UNITED STATES  
DEPARTMENT OF THE INTERIOR

## GEOLOGICAL SURVEY

## APPLICATION FOR PERMIT TO DRILL, DEEPEN, OR PLUG BACK

## 1a. TYPE OF WORK

DRILL ☒DEEPEN ☐PLUG BACK ☐

## b. TYPE OF WELL

OIL  
WELL ☐GAS  
WELL ☒OTHER ☐SINGLE  
ZONE ☐MULTIPLE  
ZONE ☐

## 2. NAME OF OPERATOR

Yates Petroleum Corporation ✓

## 3. ADDRESS OF OPERATOR

207 S. 4th, Artesia, New Mexico 88210

## 4. LOCATION OF WELL (Report location clearly and in accordance with any State requirements.)\*

At surface

660' FNL and 660' FEL

At proposed prod. zone

same

## 14. DISTANCE IN MILES AND DIRECTION FROM NEAREST TOWN OR POST OFFICE\*

Approximately 21 miles NNE of Roswell, NM.

## 15. DISTANCE FROM PROPOSED\*

LOCATION TO NEAREST

PROPERTY OR LEASE LINE, FT.

(Also to nearest drlg. unit line, if any)

660'

## 16. NO. OF ACRES IN LEASE

2520

17. NO. OF ACRES ASSIGNED  
TO THIS WELL

160

## 18. DISTANCE FROM PROPOSED LOCATION\*

TO NEAREST WELL, DRILLING, COMPLETED,  
OR APPLIED FOR, ON THIS LEASE, FT.

## 19. PROPOSED DEPTH

4050'

## 20. ROTARY OR CABLE TOOLS

Rotary

## 21. ELEVATIONS (Show whether DE, RT, GR, etc.)

3631.0' GL

## 22. APPROX. DATE WORK WILL START\*

ASAP

## 23.

## PROPOSED CASING AND CEMENTING PROGRAM

SIZE OF HOLE	SIZE OF CASING	WEIGHT PER FOOT	SETTING DEPTH	QUANTITY OF CEMENT
14 3/4"	10 3/4"	40.5# J-55	800'	650 sx circulated
7 7/8"	4 1/2"	9.5# J-55	TD	350 sx

We propose to drill and test the Abo and intermediate formations. Approximately 800' of surface casing will be set and cement circulated to shut off gravel and caving. If needed (lost circulation) 8 5/8" intermediate casing will be run to 1500' and cemented with enough cement calculated to tie back into the surface casing. If commercial, production casing will be run and cemented with adequate cover, perforated and stimulated as needed for production.

MUD PROGRAM: FW gel/LCM to 800', Brine to 3200', Brine/KCL water to TD.

BOP PROGRAM: BOP's will be installed at the offset and tested daily.

GAS NOT DEDICATED.

APPROVAL SUBJECT TO  
GENERAL REQUIREMENTS AND  
SPECIAL STIPULATIONS

IN ABOVE SPACE DESCRIBE PROPOSED PROGRAM: If proposal is to drill or plug back, give data on present productive zone and proposed new productive zone. If proposal is to drill or deepen directionally, give pertinent data on subsurface locations and measured and true vertical depths. Give blowout prevention program, if any.

## 24.

SIGNED

TITLE

Regulatory Agent

DATE

2/4/83

(This space for Federal or State office use)

PERMIT NO.

APPROVED

APPROVAL DATE

  
FEB 11 1983

APPROVED BY

CONDITIONS OF APPROVAL, IF ANY

FEB 25 1983

  
JAMES A. GILLHAM  
DISTRICT SUPERVISOROIL & GAS  
U.S. GEOLOGICAL SURVEY  
ROSWELL, NEW MEXICO

Plugged and  
Abandoned  
3-4-83

NEW MEXICO OIL CONSERVATION COMMISSION  
WELL LOCATION AND ACREAGE DEDICATION PLAT

Form C-102  
Supersedes C-128  
Effective 1-1-65

All distances must be from the outer boundaries of the Section.

YATES PETROLEUM CORPORATION		Federal "HY"		Well No. 7
Section 34	Township 7 South	Range 25 East	County Chaves	

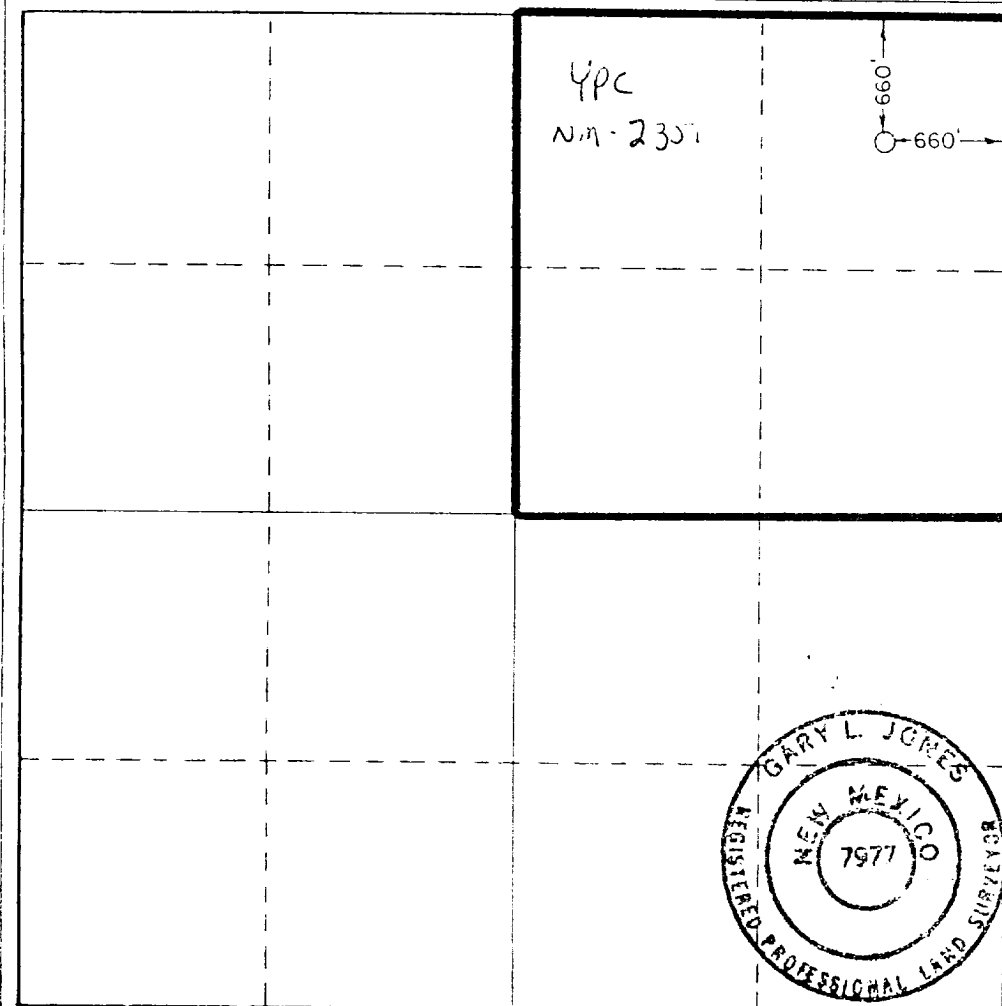
Actual Well Location of Well:	660 feet from the North line and 660 feet from the East line	Dedicated Acreage: 160 Acres
3631.0'	160	160

1. Outline the acreage dedicated to the subject well by colored pencil or hatchure marks on the plat below.
2. If more than one lease is dedicated to the well, outline each and identify the ownership thereof (both as to working interest and royalty).
3. If more than one lease of different ownership is dedicated to the well, have the interests of all owners been consolidated by communitization, unitization, force-pooling, etc?

☐ Yes ☐ No If answer is "yes," type of consolidation \_\_\_\_\_

If answer is "no," list the owners and tract descriptions which have actually been consolidated. (Use reverse side of this form if necessary.) \_\_\_\_\_

No allowable will be assigned to the well until all interests have been consolidated (by communitization, unitization, forced-pooling, or otherwise) or until a non-standard unit, eliminating such interests, has been approved by the Commission.



CERTIFICATION

I hereby certify that the information contained herein is true and complete to the best of my knowledge and belief.

*Ken Beardemohl*

Name

Ken Beardemohl

Position

Regulatory Agent

Company

Yates Petroleum Corp.

Date

2/11/83

I hereby certify that the well location shown on this plat was plotted from field notes of actual surveys made by me or under my supervision, and that the same is true and correct to the best of my knowledge and belief.

Date Surveyed

February 4, 1983

Registered Professional Engineer and/or Land Surveyor

*Gary L. Jones*

Certificate No.

7977



- YATES PETROLEUM CORPORATION

Federal "HY" #7  
660' FNL and 660' FEL  
Sec. 34-T7S-R25E

In conjunction with Form 9-331C, Application for Permit to Drill subject well, Yates Petroleum Corporation submits the following ten items of pertinent information in accordance with USGS requirements.

1. The geologic surface formation is quaternary alluvium.

2. The estimated tops of geologic markers are as follows:

San Andres	379'
Glorieta	1405'
Fullerton	2824'
Abo	3529'
TD	4050'

3. The estimated depths at which anticipated water, oil or gas formations are expected to be encountered:

Water: approximately 275-300'

Oil or Gas: Abo 3550'

4. Proposed Casing Program: See Form 9-331C.

5. Pressure Control Equipment: See Form 9-331C and Exhibit B.

6. Mud Program: See Form 9-331C.

7. Auxiliary Equipment: Kelly Cock; pit level indicators and flow sensor equipment;  
sub with full-opening valve on floor, drill pipe connection.

8. Testing, Logging and Coring Program:

Samples: Surface casing to TD.

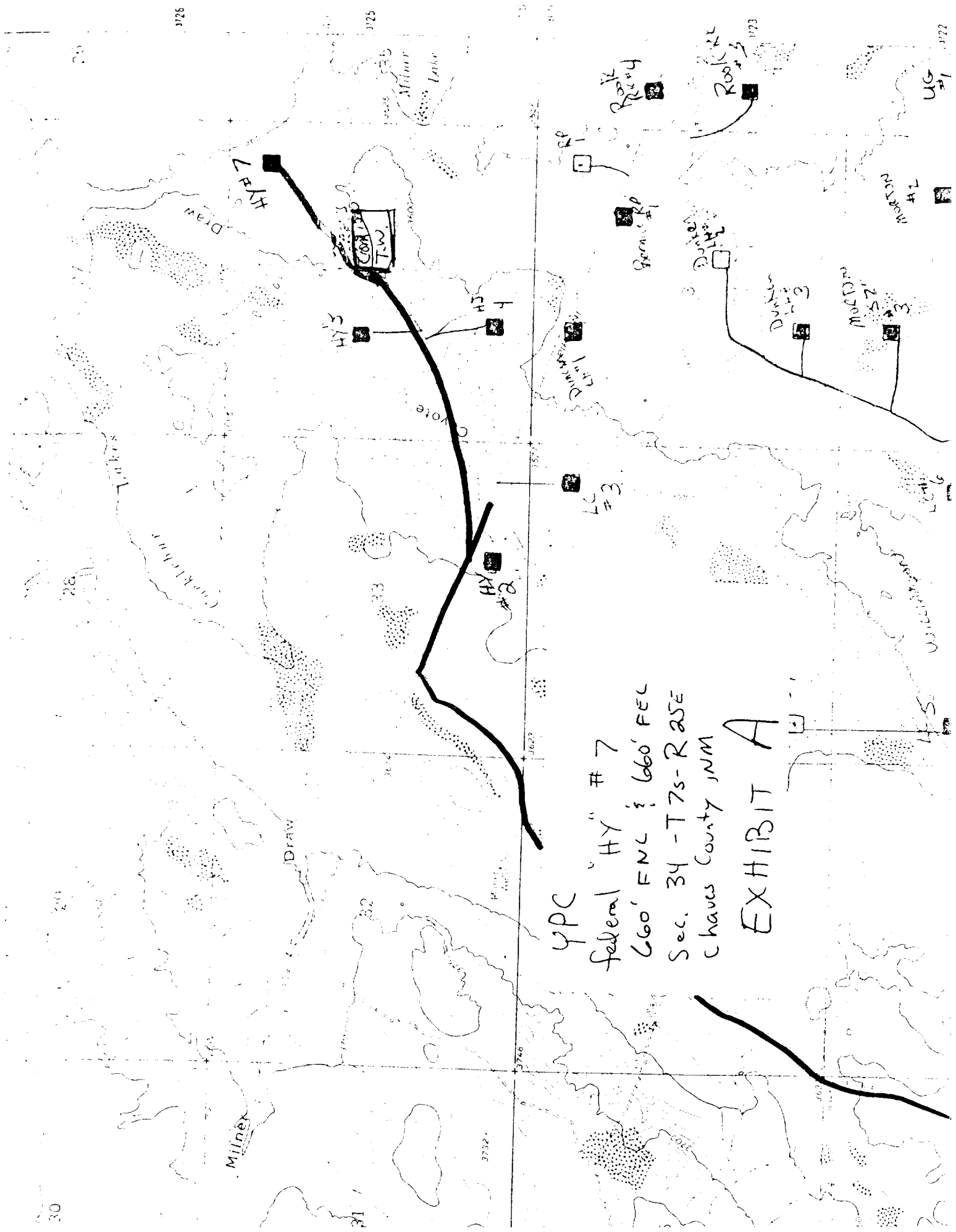
DST's: As warranted.

Coring: None

Logging: CNL-FDC TD to csg w/GR-CNL to surface, DLL from TD to csg.

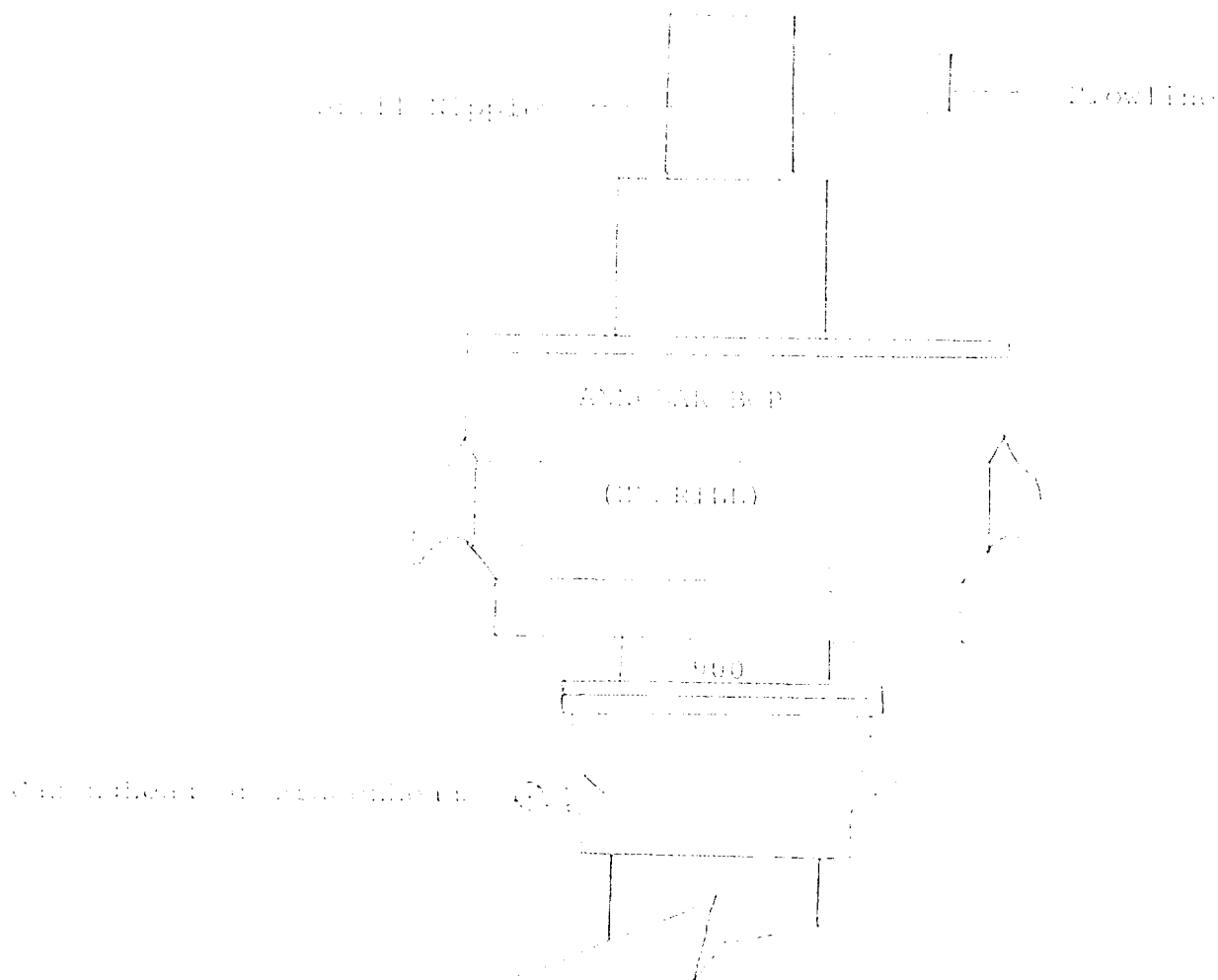
9. No abnormal pressures or temperatures are anticipated.

10. Anticipated starting date: As soon as possible after approval.



YPC  
Federal "HY" # 7  
660' FNL & 660' FEL  
Sec. 34 - T7s-R4SE  
Chaves County, NM  
EXHIBIT A

# Exhibit B



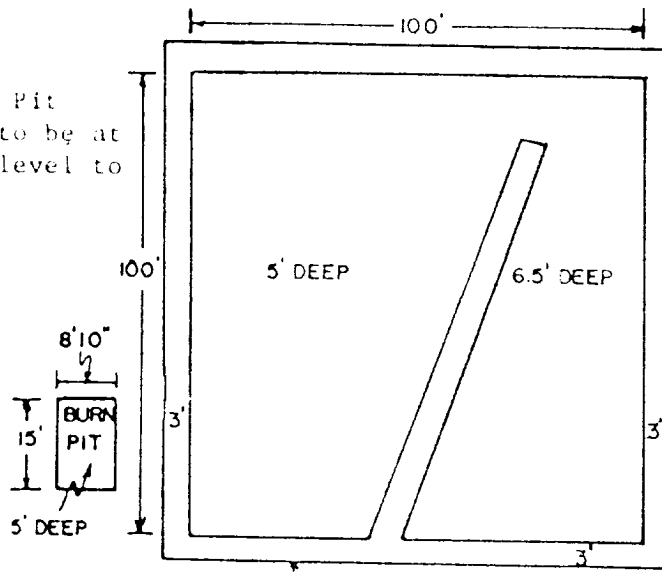
## 1. FOLLOWING INSTITUTE MINIMUM BLOWOUT PREVENTER REQUIREMENTS

1. All preventers to be hydraulically operated with secondary manual controls installed prior to drilling out from under casing.
2. All connections from operating manifolds to preventers to be all steel. Hole or tube a minimum of one inch in diameter.
3. The available closing pressure shall be at least 15% in excess of that required with sufficient volume to operate the BOP's.
4. All connections to and from preventer to have a pressure rating equal to or greater than that of the BOP's.
5. Hole must be kept drilled on trips below intermediate casing.

# YATES PETROLEUM CORP.

## Exhibit C

Reserve Pit  
bottom to be at  
ground level to  
1 ft.



NOTE:

Inside walls must be as  
high and wide as outer  
walls of pit.

