

NM OIL CONS. COMMISSION  
Drawer DD  
Artesia, NM 88210 UNITED STATES  
DEPARTMENT OF THE INTERIOR  
GEOLOGICAL SURVEYSUBMIT IN ORIGINAL  
(Other instructions on  
reverse side)Form approved.  
Budget Bureau No. 42-R1425

30-005-61948

C/87

## APPLICATION FOR PERMIT TO DRILL, DEEPEN, OR PLUG BACK

1a. TYPE OF WORK DRILL <input checked="" type="checkbox"/> DEEPEN <input type="checkbox"/> PLUG BACK <input type="checkbox"/>		RECEIVED MAR 01 1983 O. C. D. ARTESIA OFFICE. W, D	5. LEASE DESIGNATION AND SERIAL NO. NM-10263	
b. TYPE OF WELL OIL WELL <input type="checkbox"/> GAS WELL <input checked="" type="checkbox"/> OTHER <input type="checkbox"/>			6. IF INDIAN, ALLOTTEE OR TRIBE NAME	
2. NAME OF OPERATOR Yates Petroleum Corporation ✓		7. UNIT AGREEMENT NAME	8. FARM OR LEASE NAME Thomas "LN" Federal	
3. ADDRESS OF OPERATOR 207 S. 4th, Artesia, New Mexico 88210			9. WELL NO.	
4. LOCATION OF WELL (Report location clearly and in accordance with any applicable regulations.) At surface 660' FNL and 660' FWL At proposed prod. zone same		10. FIELD AND POOL, OR WILDCAT Pecos Slope Abo	11. SEC., T., R., M., OR BLK. AND SURVEY OR AREA Sec. 29-T6S-R25E	
14. DISTANCE IN MILES AND DIRECTION FROM NEAREST TOWN OR POST OFFICE* 29 miles NE of Roswell, New Mexico.			12. COUNTY OR PARISH Chaves	
15. DISTANCE FROM PROPOSED* LOCATION TO NEAREST PROPERTY OR LEASE LINE, FT. (Also to nearest drlg. unit line, if any) 660'		16. NO. OF ACRES IN LEASE 1200	17. NO. OF ACRES ASSIGNED TO THIS WELL 160	
18. DISTANCE FROM PROPOSED* TO NEAREST WELL, DRILLING, COMPLETED, OR APPLIED FOR, ON THIS LEASE, FT. 4000'		20. ROTARY OR CABLE TOOLS Rotary		
21. ELEVATIONS (Show whether DF, RT, GR, etc.) 3775.8' GL		22. APPROX. DATE WORK WILL START* ASAP		

23. PROPOSED CASING AND CEMENTING PROGRAM				
SIZE OF HOLE	SIZE OF CASING	WEIGHT PER FOOT	SETTING DEPTH	QUANTITY OF CEMENT
14 3/4"	10 3/4"	40.5# J-55	975'	600 sx circulated
7 7/8"	4 1/2"	9.5# J-55	TD	350 sx

We propose to drill and test the Abo and intermediate formations. Approximately 975' of surface casing will be set and cement circulated to shut off gravel and caving. If needed (lost circulation) 8 5/8" intermediate casing will be run to 1500' and cement calculated to tie back into the surface casing. If commercial, production casing will be run and cemented with adequate cover, perforated and stimulated as needed for production.

MUD PROGRAM: FW gel/LCM to 975', Brine to 3200', Brine/KCL water to TD.

BOP PROGRAM: BOP's will be installed at the offset and tested daily.

GAS NOT DEDICATED.

APPROVAL SUBJECT TO  
GENERAL REQUIREMENTS AND  
SPECIAL STIPULATIONS

IN ABOVE SPACE DESCRIBE PROPOSED PROGRAM: If proposal is to deepen or plug back, give pertinent data on present productive zone and proposed new productive zone. If proposal is to drill or deepen directionally, give pertinent subsurface locations and measured and true vertical depths. Give blowout preventer program, if any.

24. SIGNED Cy Amear TITLE Regulatory Agent DATE 2/10/83  
(This space for Federal or State office use)

PERMIT NO.	APPROVED
APPROVED BY	FEB 28 1983
CONDITIONS OF APPROVAL, IF ANY:	JAMES A. GILLHAM DISTRICT SUPERVISOR

APPROVAL DATE	RECEIVED
TITLE	DATE FEB 11 1983
OIL & GAS U.S. GEOLOGICAL SURVEY ROSWELL, NEW MEXICO	

Post a pg  
90-124 of Book  
2-4-83

NEW MEXICO OIL CONSERVATION COMMISSION  
WELL LOCATION AND ACREAGE DEDICATION PLAT

Form C-102  
Supersedes C-128  
Effective 1-1-65

All distances must be from the outer boundaries of the Section.

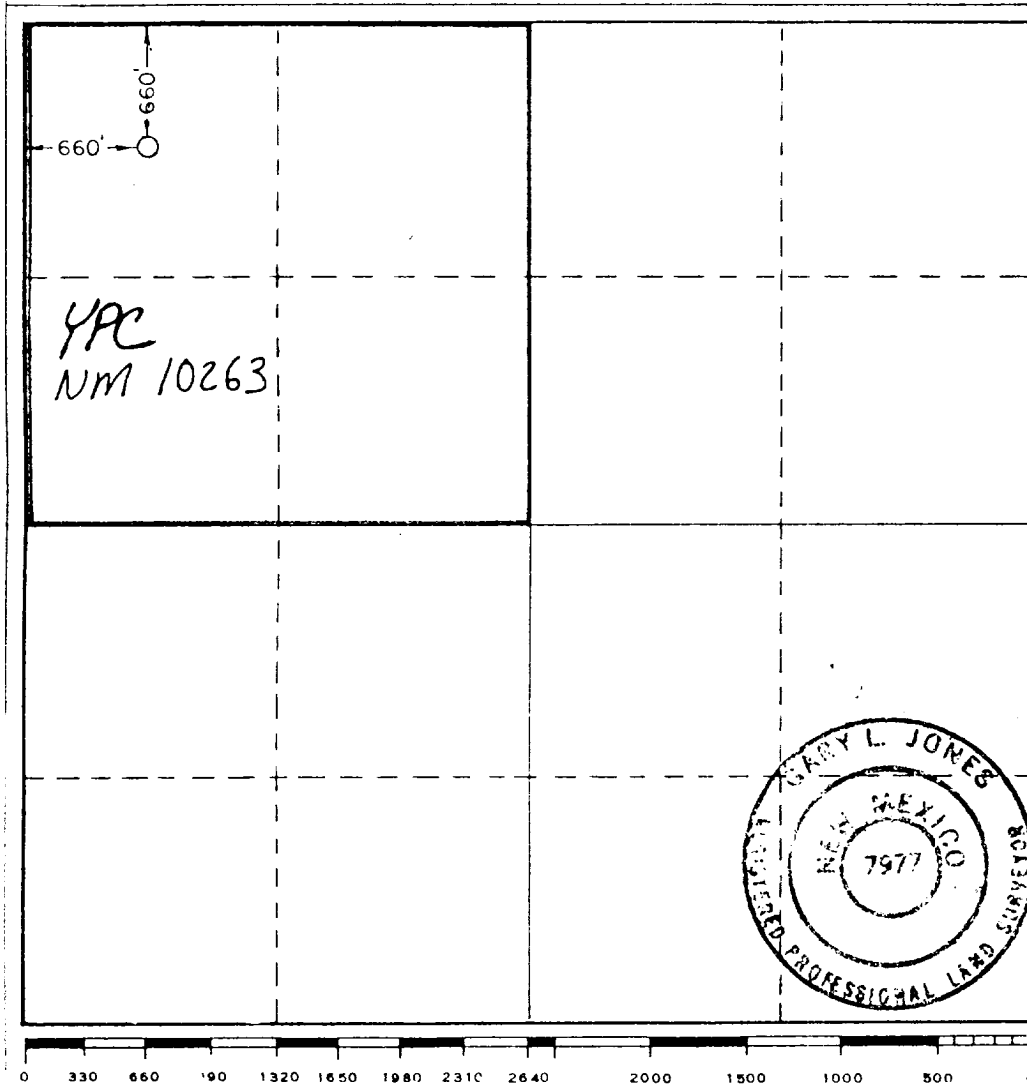
Operator <b>YATES PETROLEUM CORPORATION</b>		Lease <b>Thomas "LN" Federal</b>		Well No. <b>7</b>
Unit Letter <b>D</b>	Section <b>29</b>	Township <b>6 South</b>	Range <b>25 East</b>	County <b>Chaves</b>
Actual Footage Location of Well: <b>660</b> feet from the <b>North</b> line and <b>660</b> feet from the <b>West</b> line				
Ground Level Elev. <b>3775.8'</b>	Producing Formation <b>ABO</b>	Pool <b>PECOS Slope ABO</b>	Dedicated Acreage: <b>160</b> Acres	

1. Outline the acreage dedicated to the subject well by colored pencil or hachure marks on the plat below.
2. If more than one lease is dedicated to the well, outline each and identify the ownership thereof (both as to working interest and royalty).
3. If more than one lease of different ownership is dedicated to the well, have the interests of all owners been consolidated by communitization, unitization, force-pooling, etc?

☐ Yes ☒ No If answer is "yes," type of consolidation \_\_\_\_\_

If answer is "no," list the owners and tract descriptions which have actually been consolidated. (Use reverse side of this form if necessary.) \_\_\_\_\_

No allowable will be assigned to the well until all interests have been consolidated (by communitization, unitization, forced-pooling, or otherwise) or until a non-standard unit, eliminating such interests, has been approved by the Commission.



CERTIFICATION

I hereby certify that the information contained herein is true and complete to the best of my knowledge and belief.

*Cy Cowan*

Name  
**Cy Cowan**  
Position  
**Regulatory Agent**  
Company  
**Yates Petroleum Corp.**  
Date  
**2/10/83**

I hereby certify that the well location shown on this plat was plotted from field notes of actual surveys made by me or under my supervision, and that the same is true and correct to the best of my knowledge and belief.

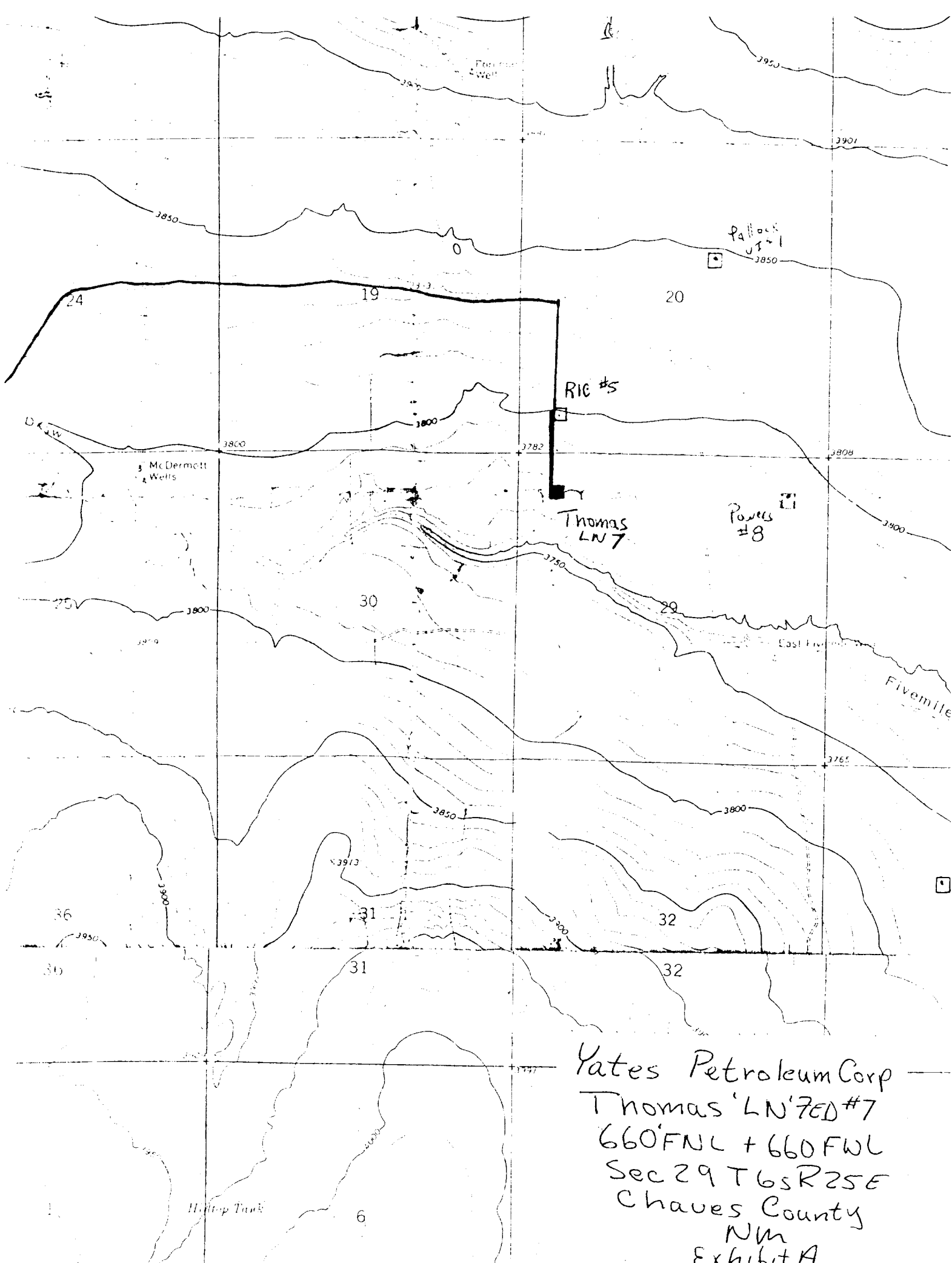
Date Surveyed  
**February 7, 1983**  
Registered Professional Engineer and/or Land Surveyor  
*Gary L. Jones*  
Certificate No.  
**7977**

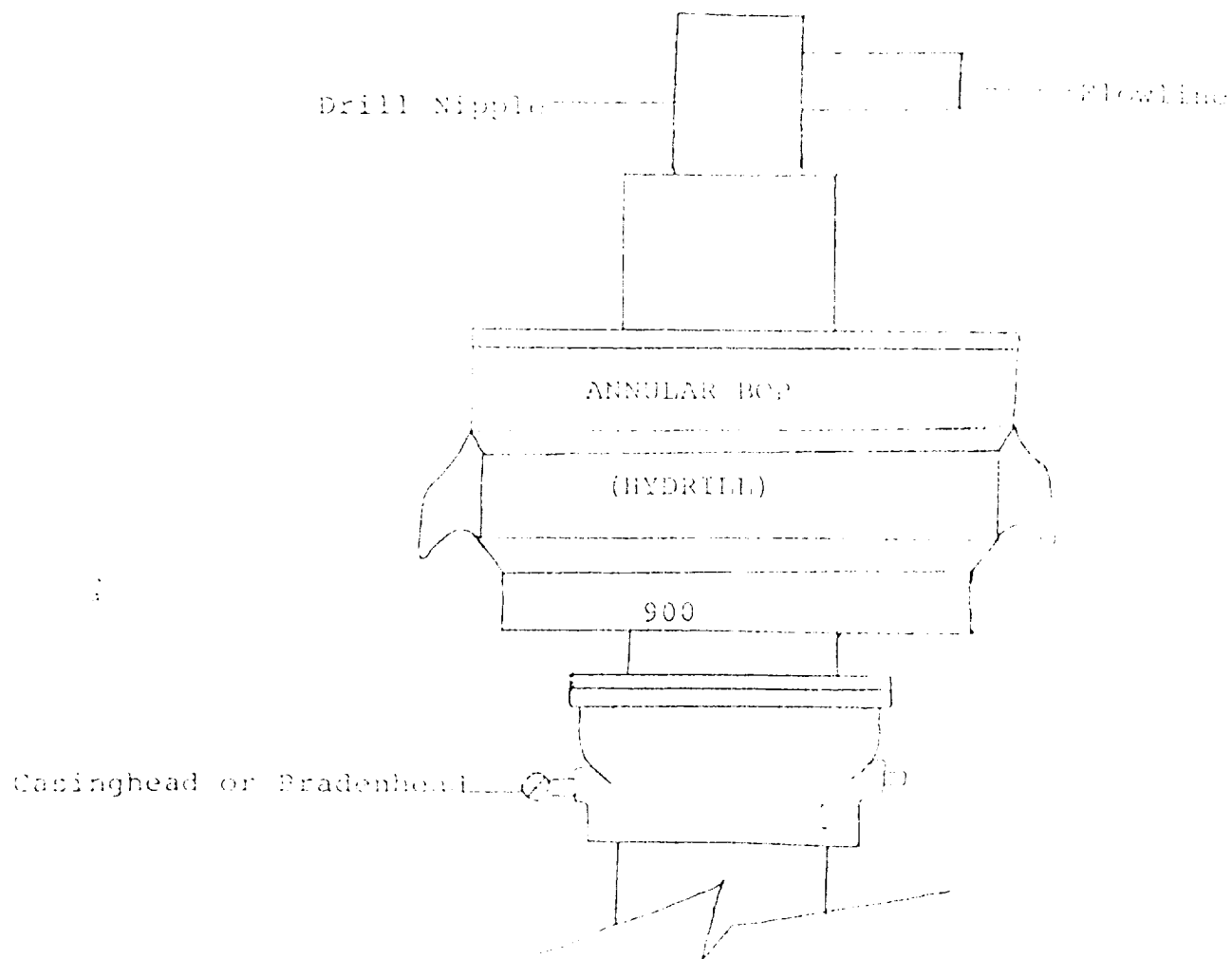
- YATES PETROLEUM CORPORATION -  
Thomas "LN" Federal #7  
660' FNL and 660' FWL  
Sec. 29-T6S-R25E

In conjunction with Form 9-331C, Application for Permit to Drill subject well, Yates Petroleum Corporation submits the following ten items of pertinent information in accordance with USGS requirements.

1. The geologic surface formation is sandy alluvium.
2. The estimated tops of geologic markers are as follows:

San Andres	250'
Glorieta	1304'
Fullerton	2750'
Abo	3395'
TD	4000'
3. The estimated depths at which anticipated water, oil or gas formations are expected to be encountered:  
  
Water: 250'-350'  
  
Oil or Gas: 3415'
4. Proposed Casing Program: See Form 9-331C.
5. Pressure Control Equipment: See Form 9-331C and Exhibit B.
6. Mud Program: See Form 9-331C.
7. Auxiliary Equipment: Kelly Cock; pit level indicators and flow sensor equipment;  
sub with full-opening valve on floor, drill pipe connection.
8. Testing, Logging and Coring Program:  
  
Samples: Surface casing to TD.  
DST's: As warranted.  
Coring: None  
Logging: CNL-FDC TD to csg w/GR-CNL to surf & DLL from TD to csg.
9. No abnormal pressures or temperatures are anticipated.
10. Anticipated starting date: As soon as possible after approval.





THE FOLLOWING CONSTITUTE MINIMUM BLOWOUT PREVENTER REQUIREMENTS

1. All preventers to be hydraulically operated with secondary manual controls installed prior to drilling out from under casing.
2. All connections from operating manifolds to preventers to be all steel. Hole or tube a minimum of one inch in diameter.
3. The available closing pressure shall be at least 15% in excess of that required with sufficient volume to operate the BOP's.
4. All connections to and from preventer to have a pressure rating equivalent to that of the BOP's.
5. Hole must be kept filled on trips below intermediate casing.

YATES PETROLEUM CORP.  
Exhibit C

