

UNITED STATES  
DEPARTMENT OF THE INTERIOR

GEOLOGICAL SURVEY

AMENDED

## APPLICATION FOR PERMIT TO DRILL, DEEPEN, OR PLUG BACK

## 1a. TYPE OF WORK

DRILL ☒DEEPEN ☐PLUG BACK ☐

## b. TYPE OF WELL

OIL  
WELL ☐GAS  
WELL ☒

OTHER

SINGLE  
ZONE ☒MULTIPLE  
ZONE ☒

## 2. NAME OF OPERATOR

Mesa Petroleum Co. ✓

## 3. ADDRESS OF OPERATOR

P.O. Box 2009 / Amarillo, Texas 79189

## 4. LOCATION OF WELL (Report location clearly and in accordance with any State requirements\*)

At surface

1980' FSL &amp; 1980' FWL

NE 1/4 SW 1/4

At proposed prod. zone

same

## 14. DISTANCE IN MILES AND DIRECTION FROM NEAREST TOWN OR POST OFFICE\*

27 miles northwest from Roswell, New Mexico

## 15. DISTANCE FROM PROPOSED\*

LOCATION TO NEAREST  
PROPERTY OR LEASE LINE, FT. 660' / 660'  
(Also to nearest drlg. unit line, if any)

## 18. DISTANCE FROM PROPOSED LOCATION\*

TO NEAREST WELL, DRILLING, COMPLETED,  
OR APPLIED FOR, ON THIS LEASE, FT. 1320'

## 16. NO. OF ACRES IN LEASE

2441.2

## 19. PROPOSED DEPTH

3500'

17. NO. OF ACRES ASSIGNED  
TO THIS WELL

160

## 20. ROTARY OR CABLE TOOLS

Rotary

## 21. ELEVATIONS (Show whether DF, RT, GR, etc.)

4182' GR

## 22. APPROX. DATE WORK WILL START\*

March 15, 1983

## 23.

## PROPOSED CASING AND CEMENTING PROGRAM

SIZE OF HOLE	SIZE OF CASING	WEIGHT PER FOOT	SETTING DEPTH	QUANTITY OF CEMENT
12 1/4"	8 5/8"	24#	1400'	700/300 Surface <b>CIRCULATE</b>
7 7/8"	4 1/2"	10.5#	3500'	350 Cover all pay

Propose to drill 12 1/4" hole to approximately 1400' to set 8 5/8" surface casing and cement to surface. Will nipple up ram type BOP's and reduce hole to 7 7/8" to drill to total depth. Drilling medium will be air, foam, or mud as required. After log evaluation, 4 1/2" casing may be run and cemented with sufficient kinds and amounts to isolate and seal off any fresh water, oil or gas zones encountered.

Operator's Gas Sales are dedicated.

Note: Location moved for Geological reasons.

APPROVAL SUBJECT TO  
GENERAL REQUIREMENTS AND  
SPECIAL STIPULATIONS  
ATTACHED

XC: MMS-R (0+6), CEN RCDS, ACCTG, MIDLAND, ROSWELL, OPS (FILE), PARTNERS

IN ABOVE SPACE DESCRIBE PROPOSED PROGRAM: If proposal is to deepen or plug back, give data on present productive zone and proposed new productive zone. If proposal is to drill or deepen directionally, give pertinent data on subsurface locations and measured and true vertical depths. Give blowout preventer program, if any.

24.

SIGNED

R.E. Mathis

TITLE

REGULATORY COORDINATOR

DATE

2-4-83

(This space for Federal or State office use)

PERMIT NO.

APPROVED

APPROVAL DATE

APPROVED BY

MAR 2 1983

TITLE

DATE

CONDITIONS OF APPROVAL, IF ANY:

JAMES A. GILLHAM \*See Instructions On Reverse Side  
DISTRICT SUPERVISOR

RECEIVED

FEB 7 1983

RECEIVED  
FEB 7 1983  
NEW MEXICO

STATE OF NEW MEXICO  
ENERGY AND MINERALS DEPARTMENT

SANTA FE, NEW MEXICO 87500

All distances must be from the outer boundaries of the Section.

Operator Mesa Petroleum Co.		Lease Carol Federal Com		Well No. #7
Section K	Section 1	Township 7 South	Range 22 East	County Chaves
Actual Footage Location of Well: 1980 feet from the South line and 1980 feet from the West line				
Ground Level Elev. 4182	Producing Formation ABO	Pool West Pecos Slope	Dedicated Acreage: SW $\frac{1}{4}$ 160 Acres	

1. Outline the acreage dedicated to the subject well by colored pencil or hatchure marks on the plat below.

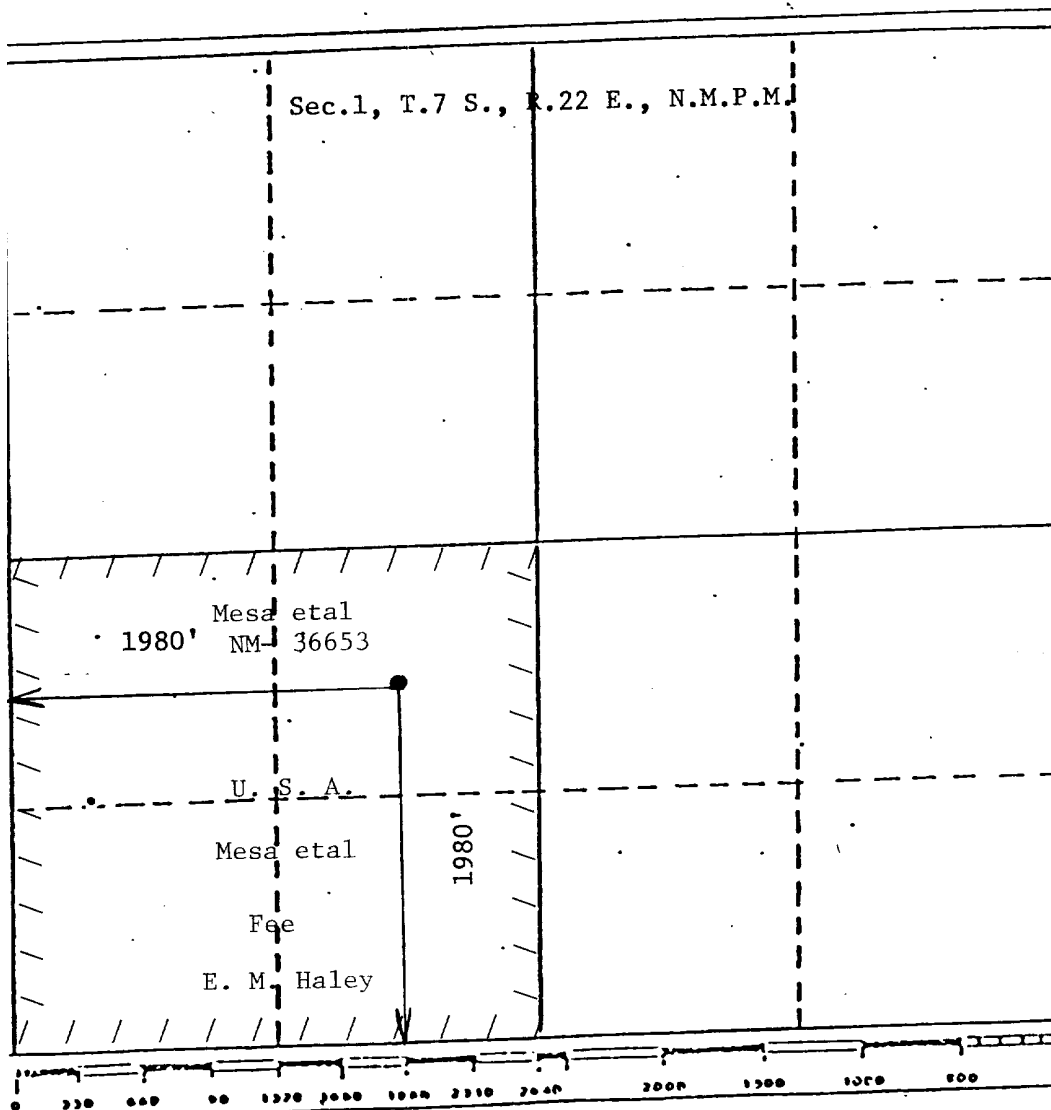
2. If more than one lease is dedicated to the well, outline each and identify the ownership thereof (both as to working interest and royalty).

3. If more than one lease of different ownership is dedicated to the well, have the interests of all owners been consolidated by communitization, unitization, force-pooling, etc?

☐ Yes ☐ No If answer is "yes," type of consolidation communitization in progress

If answer is "no," list the owners and tract descriptions which have actually been consolidated. (Use reverse side of this form if necessary.)

No allowable will be assigned to the well until all interests have been consolidated (by communitization, unitization, forced-pooling, or otherwise) or until a non-standard unit, eliminating such interests, has been approved by the Division.



## CERTIFICATION

I hereby certify that the information contained herein is true and complete to the best of my knowledge and belief.

*R. E. Mathis*

Name

R. E. Mathis

Position

Regulatory Coordinator

Company

Mesa Petroleum Co.

Date

2-4-83

I hereby certify that the well location shown on this plat was plotted from field notes of actual surveys made by me or under my supervision, and that the same is true and correct to the best of my knowledge and belief.

JOHN D. JAQUES  
NEW MEXICO  
January 6, 1983  
Registered Professional Engineer  
and/or Licensed Surveyor  
John D. Jaques, P.E. & L.S.  
Certificate No. 6290

MESA PETROLEUM CO.  
Carol Federal Com #7  
1980' FSL & 1980' FWL Sec 1, T7S, R22E  
Chaves County, New Mexico

In conjunction with Form 9331-C, Application For Permit to Drill subject well, the following additional information is provided:

1. Applicable portions of the GENERAL REQUIREMENTS FOR OIL AND GAS OPERATIONS ON FEDERAL LEASES, Roswell District, Geological Survey of September 1, 1980 will be adhered to.
2. Geological markers are estimated as follows:

San Andres	Surface
Glorieta	690'
Tubb	2210'
ABO	2845'
3. Hydrocarbon bearing strata may occur in the ABO formation(s). No fresh water is expected to be encountered below 900'.
4. The Casing and Blowout Preventer Program will be determined by hole conditions as encountered. Anticipate drilling with fresh water or mud using ram type preventer and rotating head for well control. The 8 5/8" casing will be set at approximately 1400' to protect any fresh water zones and cemented to the surface. The 4 1/2" production casing will be set at total depth or shallower depending upon the depth of the deepest commercial hydrocarbon bearing strata encountered. Sufficient amounts and kinds of cement would be used to ensure any water, gas, or oil zones encountered are isolated and shut off down to the casing point, if run.
5. No drill stem tests or coring program is planned. The logging program may consist of a GR-CNL from surface to total depth and FDC from casing point to total depth.
6. Anticipated drilling time is ten days with completion operations to follow as soon as a completion unit is available.

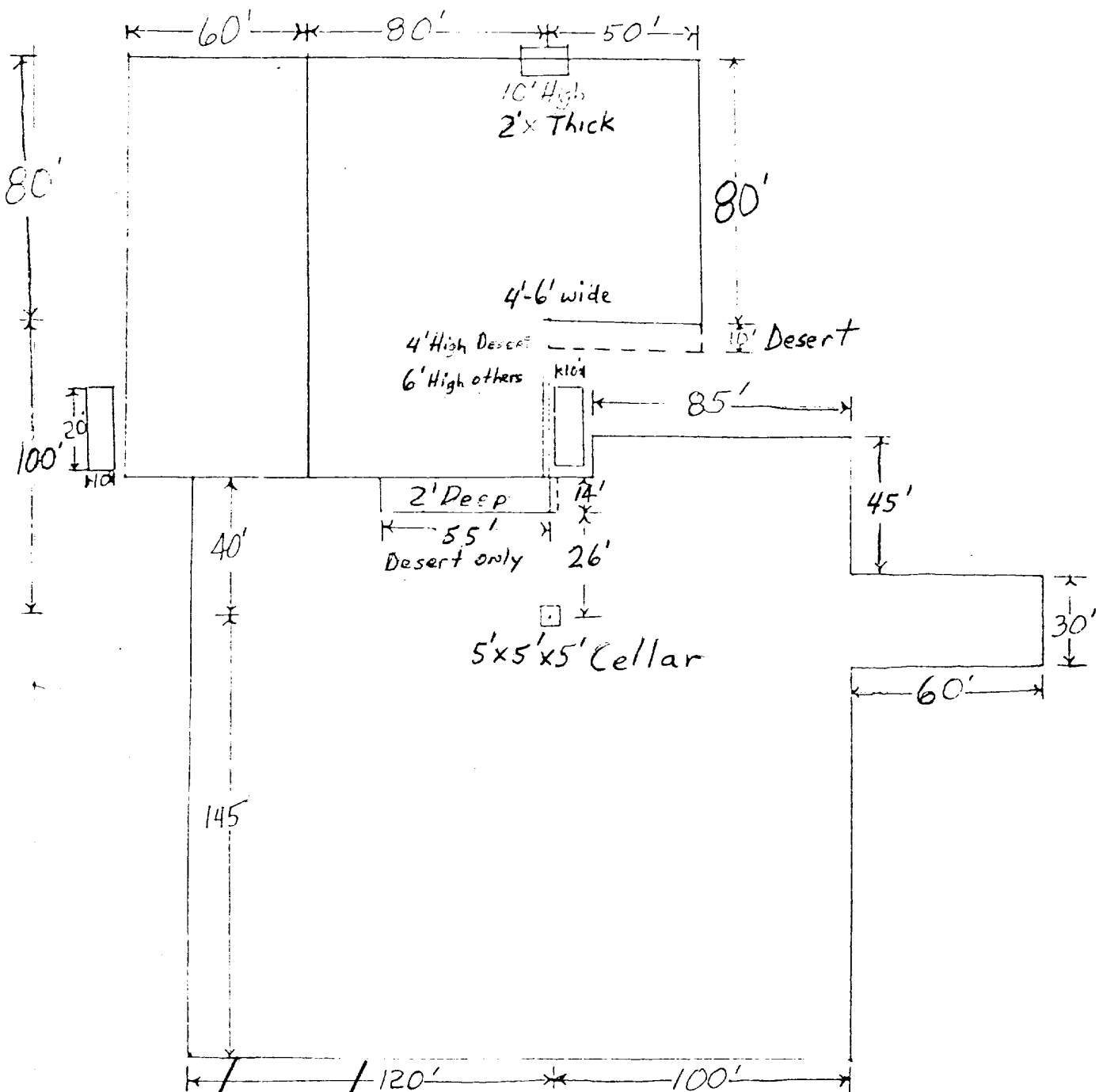
# ROCK HOUSE CANYON (

NEW MEXICO CHAN

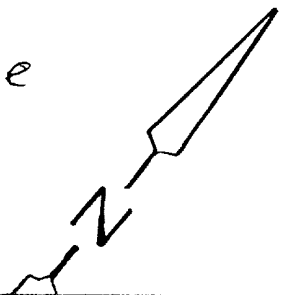
7.5 MINUTE SERIES (TO

130 R 22 E 40 131 R 23 E 132 133 4100





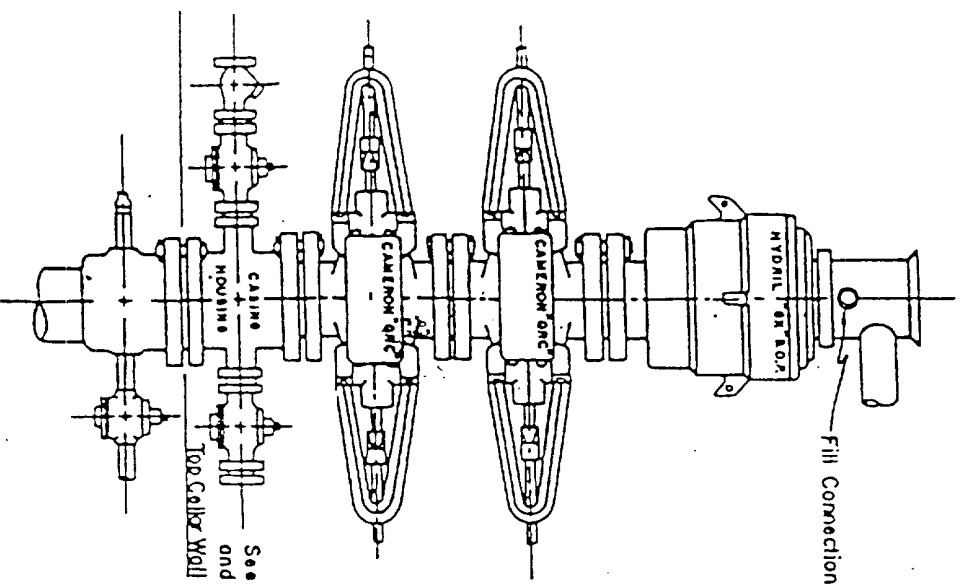
6"-8" Watered & Compacted Caliche  
ON PAD & ROAD IF NEEDED



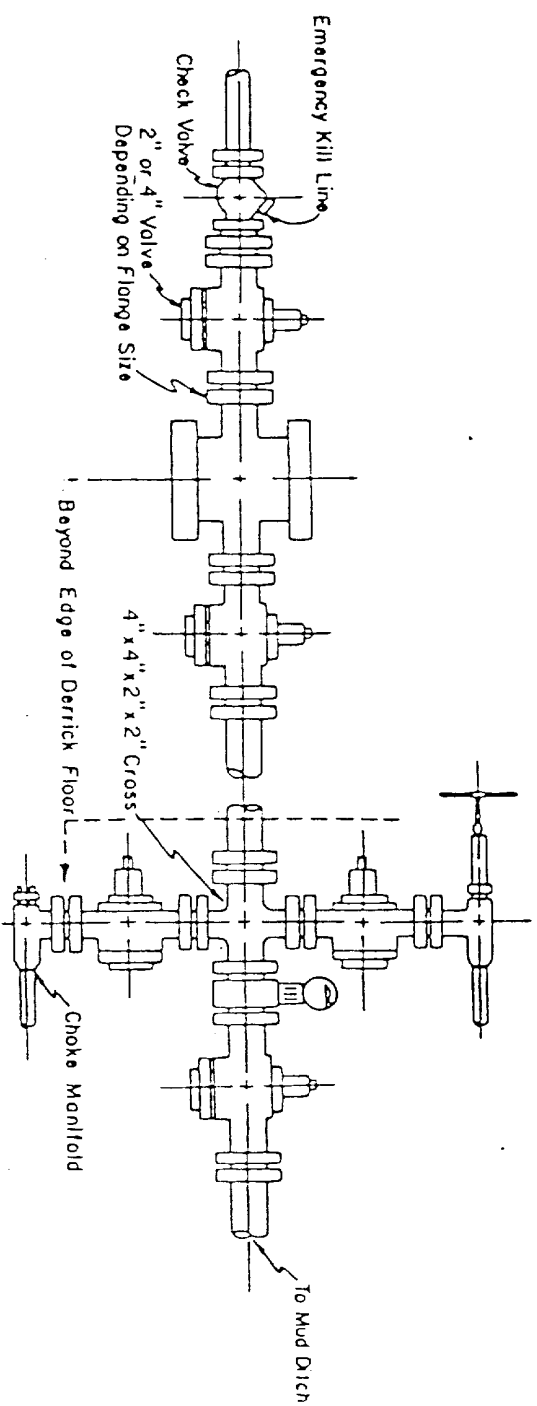
FOR PROPOSED CAROL FED COM #7

BY: [Redacted] DRAWN BY: [Redacted]

# Blow-out Preventers hydril and choke manifold are all 900 Series



3,000 PSI WORKING PRESSURE  
BLOW-OUT PREVENTER HOOK-UP

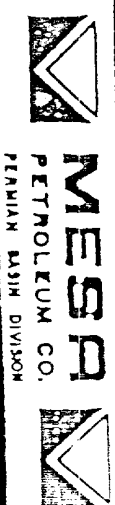


3,000 PSI WORKING PRESSURE  
KILL, CHOKE, AND FILL CONNECTIONS

DETAIL OF 4" FLOW LINE CHOKE ASSEMBLY

Minimum assembly for 3,000 PSI working pressure will consist of three preventers.  
The bottom and middle preventers may be Cameron.

NOTE: HYDRIL not installed on shallow-low pressure wells.  
RAM type BOPs are API 10" X 3000 PSI



E X H I B I T

V I