

NM OIL CONS. MISSION

SUBMIT IN DUPLICATE*
(Other instructions on
reverse side)Form approved.
Budget Bureau No. 42-R1425.Drawer DD UNITED STATES
Artesia, NM 88210DEPARTMENT OF THE INTERIOR
GEOLOGICAL SURVEY

R#-7188

30-005-61953

APPLICATION FOR PERMIT TO DRILL, DEEPEN, OR PLUG BACK

1a. TYPE OF WORK

DRILL ☒DEEPEN ☐

FEB 21 1983

b. TYPE OF WELL

OIL ☐GAS ☒OTHER ☐SINGLE ☒ & MULTIPLE ☐MINERALS MGMT. SERVICE
ROSWELL, NEW MEXICO

2. NAME OF OPERATOR

Yates Petroleum Corporation

3. ADDRESS OF OPERATOR

207 S. 4th, Artesia, New Mexico 88210

4. LOCATION OF WELL (Report location clearly and in accordance with any State requirements.)
At surface

660' FSL and 660' FWL

At proposed prod. zone

same

14. DISTANCE IN MILES AND DIRECTION FROM NEAREST TOWN OR POST OFFICE*

Approximately 9 miles east of Hagerman, NM. O.C.D. OFFICE

15. DISTANCE FROM PROPOSED*

LOCATION TO NEAREST

PROPERTY OR LEASE LINE, FT.

(Also to nearest drlg. unit line, if any)

660'

18. DISTANCE FROM PROPOSED LOCATION*
TO NEAREST WELL, DRILLING COMPLETED,
OR APPLIED FOR, ON THIS LEASE, FT.

same

16. NO. OF ACRES IN LEASE

19. PROPOSED DEPTH

appr. 8100'

17. NO. OF ACRES ASSIGNED
TO THIS WELL

320

20. ROTARY OR CABLE TOOLS

Rotary

21. ELEVATIONS (Show whether DF, RT, GR, etc.)

3463' GL

22. APPROX. DATE WORK WILL START*

ASAP

23. PROPOSED CASING AND CEMENTING PROGRAM

SIZE OF HOLE	SIZE OF CASING	WEIGHT PER FOOT	SETTING DEPTH	QUANTITY OF CEMENT
17 1/2"	13 3/8"	48# J-55	appr. 300'	250 sx circulated
12 1/4"	8 5/8"	24# J-55	appr. 1550'	450 sx circulated
7 7/8"	5 1/2" or 4 1/2"	15.5#-17# K-55	TD	
		or 10.5#-11.6#		

Propose to drill and test the Mississippian and intermediate horizons. Approximately 300' of surface casing will be run and cement circulated to shut off gravel and caving. Intermediate casing will be set 100' below the Artesian Water Zone and cemented to the surface. If commercial pay is encountered, we will run 5 1/2" or 4 1/2" casing and cement with 600' of cover, perforate and stimulate as needed.

MUD PROGRAM: FW gel/LCM to 1550', FW to 4500', KCL water to 6600', starch/driskpak/KCL to 7350', Flosal/driskpak/KCL mud to TD, MW 8.9-9.0, Vis 34-39, WL 10-7

BOP PROGRAM: BOP's and hydril on the 8 5/8" csg and tested, pipe rams daily, blind rams on trips, yellow jacket prior to drilling Wolfcamp.

GAS NOT DEDICATED.

IN ABOVE SPACE DESCRIBE PROPOSED PROGRAM: If proposal is to deepen or plug back, give data on present productive zone and proposed new productive zone. If proposal is to drill or deepen directionally, give pertinent data on subsurface locations and measured and true vertical depths. Give blowout preventer program, if any.

24.

SIGNED

TITLE Regulatory Agent

DATE 2/1/83

(This space for Federal or State office use)

PERMIT NO.

APPROVAL DATE

APPROVED BY

TITLE

DATE

CONDITIONS OF APPROVAL, IF ANY

APPROVED

JAN 11 1983
JAMES A. GILLHAM
DISTRICT SUPERVISORPosted & pd
JAN 10 1983
2-4-83

NEW MEXICO OIL CONSERVATION COMMISSION
WELL LOCATION AND ACREAGE DEDICATION PLAT

Form C-102
Supersedes C-128
Effective 1-1-65

All distances must be from the outer boundaries of the Section.

Operator YATES PETROLEUM CORPORATION			Lease Long Arroyo WH Federal		Well No. 1
Map Letter M	Section 11	Township 14 South	Range 27 East	County Chaves	

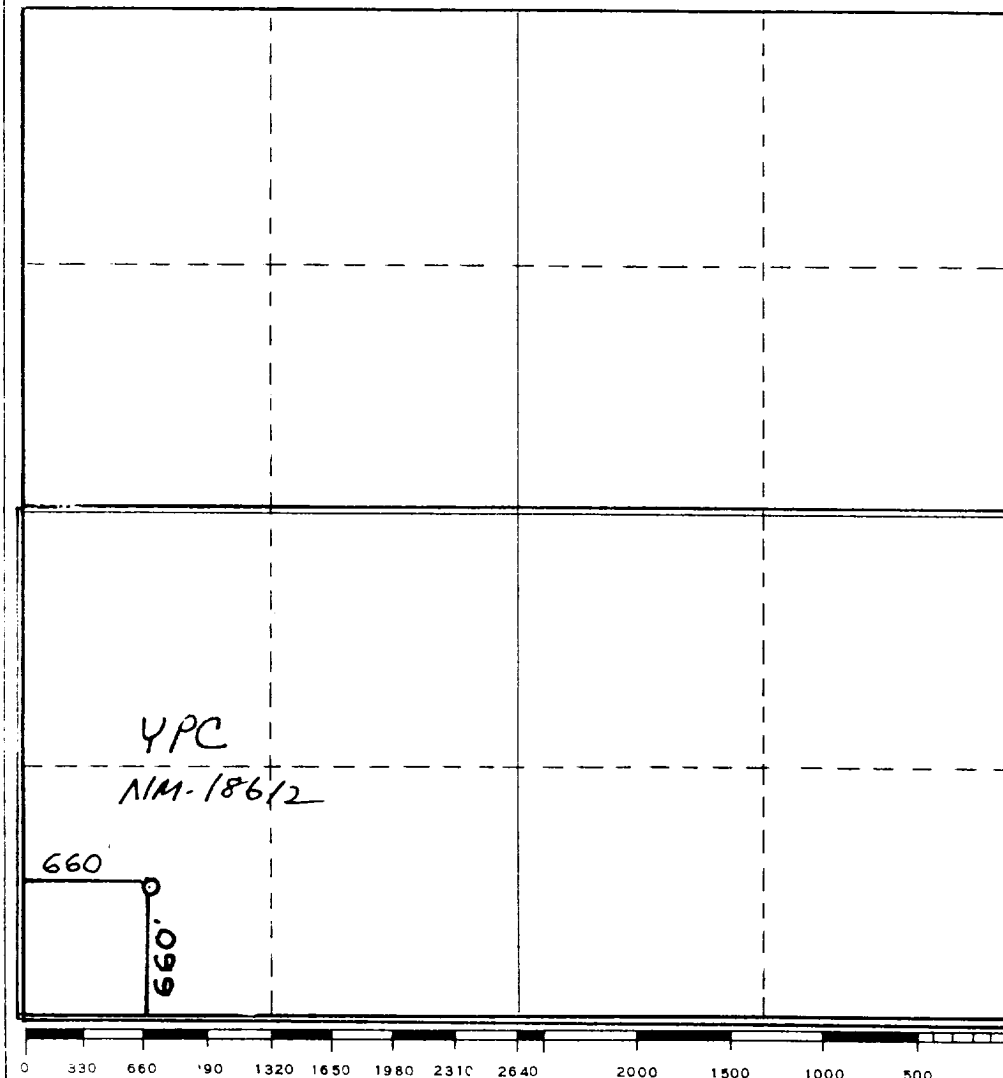
Actual Plotage Location of Well: 660 feet from the South line and 660 feet from the west line					
Ground Level Elev. 3463	Producing Formation Morrow	Pool Wildcat Spring	Dedicated Acreage: 320 Acres		

1. Outline the acreage dedicated to the subject well by colored pencil or hachure marks on the plat below.
2. If more than one lease is dedicated to the well, outline each and identify the ownership thereof (both as to working interest and royalty).
3. If more than one lease of different ownership is dedicated to the well, have the interests of all owners been consolidated by communitization, unitization, force-pooling, etc?

☐ Yes ☐ No If answer is "yes;" type of consolidation _____

If answer is "no;" list the owners and tract descriptions which have actually been consolidated. (Use reverse side of this form if necessary.) _____

No allowable will be assigned to the well until all interests have been consolidated (by communitization, unitization, forced-pooling, or otherwise) or until a non-standard unit, eliminating such interests, has been approved by the Commission.



CERTIFICATION

I hereby certify that the information contained herein is true and complete to the best of my knowledge and belief.

Gliserio Rodriguez
Name

Gliserio Rodriguez

Position

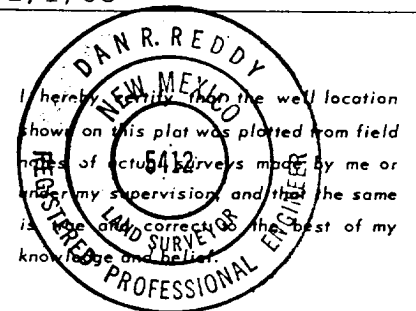
Regulatory Agent

Company

Yates Petroleum Corp.

Date

2/1/83



Date Surveyed

12/4/82

Registered Professional Engineer and/or Land Surveyor

Dan R. Reddy
Certificate No.

NMPE&LS 5412

YATES PETROLEUM CORPORATION
Long Arroyo "WH" Federal #1
660' FSL and 660' FWL
Sec. 11-T14S-R27E
Chaves County, New Mexico

In conjunction with Form 9-331C, Application for Permit to Drill subject well, Yates Petroleum Corporation submits the following ten items of pertinent information in accordance with USGS requirements.

1. The geologic surface formation is quaternary alluvium.
2. The estimated tops of geologic markers are as follows:

San Andres	1353'	Morrow Clastics	7645'
Abo	4880'	Mississippian Lime	7865'
Wolfcamp Lime	5858'	TD	8100'
Cisco	6708'		
Lower Canyon	7148'		
Strawn	7305'		
Atoka	7822'		

3. The estimated depths at which anticipated water, oil or gas formations are expected to be encountered:

Water: approximately 250'

Oil or Gas: 7320', 7775', 7680'

4. Proposed Casing Program: See Form 9-331C.
5. Pressure Control Equipment: See Form 9-331C and Exhibit B.
6. Mud Program: See Form 9-331C.
7. Auxiliary Equipment: Kelly Cock; pit level indicators and flow sensor equipment; sub with full-opening valve on floor, drill pipe connection.
8. Testing, Logging and Coring Program:
Samples: 10' spls. surface casing to TD.
DST's: as warranted
Coring: if needed
Logging: CNL-FDC TD to csg w/GR-CNL onto surface & DLL from TD to csg w/min RxO on bottom 2000'.
9. No abnormal pressures or temperatures are anticipated.
10. Anticipated starting date: As soon as possible after approval.
- 8a. Mud logging: One man unit out from under intermediate casing to TD.

EXHIBIT A

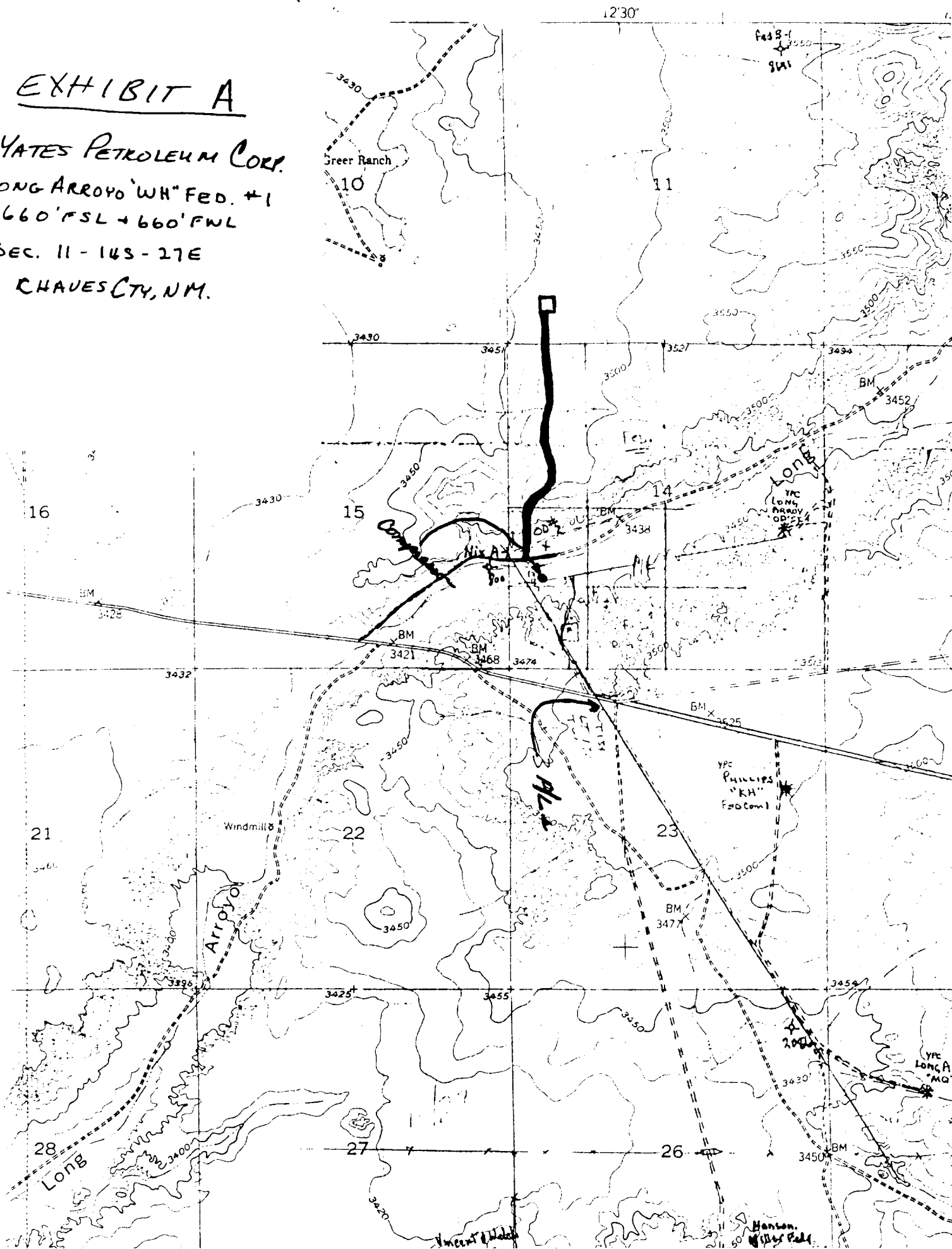
YATES PETROLEUM CORP.

ONG ARROYO 'WH' FED. #1

660' FSL + 660' FWL

SEC. 11 - 14S - 27E

CHAVES CTY, N.M.



Rotating head if necessary
2" Fill up Line

ROTATING
BOP
2000 psi

Flowline

ANNULAR BOP

(Hydrill)

900

PIPE RAMS

900

Shaffer 10" Series 900

Hydraulically Operated B.O.P.'s

BLIND
RAMS

900

Check Valve

Steel
Valve

2" Inch Kill
Line

4" Inch Line

Choke
Manifold

Choke
Manifold

Casinghead or Bradenhead

THE FOLLOWING CONSTITUTE MINIMUM BLOWOUT PREVENTER REQUIREMENTS

1. All preventers to be hydraulically operated with secondary manual controls installed prior to drilling out from under casing.
2. Choke outlet to be a minimum of 4" diameter.
3. Kill line to be of all steel construction of 2" minimum diameter.
4. All connections from operating manifolds to preventers to be all steel. hole or tube a minimum of one inch in diameter.
5. The available closing pressure shall be at least 15% in excess of that required with sufficient volume to operate the B.O.P.'s.
6. All connections to and from preventer to have a pressure rating equivalent to that of the B.O.P.'s.
7. Inside blowout preventer to be available on rig floor.
8. Operating controls located a safe distance from the rig floor.
9. Hole must be kept filled on trips below intermediate casing.
10. D. P. float must be installed and used below zone of first gas intrusion.

YATES PETROLEUM CORPORATION

Exhibit C

