

OIL CONS. COMMISSION  
Drawer DD  
UNITED STATES, NM 88210  
DEPARTMENT OF THE INTERIOR  
GEOLOGICAL SURVEY

Form Approved.  
Budget Bureau No. 42-R1424

**SUNDRY NOTICES AND REPORTS ON WELLS**

(Do not use this form for proposals to drill or to deepen or plug back to a different reservoir. Use Form 9-331-C for such proposals.)

1. oil ☒ gas ☐  
well well other

2. NAME OF OPERATOR  
McClellan Oil Corporation

3. ADDRESS OF OPERATOR  
P.O. Drawer 730, Roswell, NM 88202

4. LOCATION OF WELL (REPORT LOCATION CLEARLY. See space 17 below.)  
AT SURFACE: 760' FSL & 660' FWL  
AT TOP PROD. INTERVAL:  
AT TOTAL DEPTH:

16. CHECK APPROPRIATE BOX TO INDICATE NATURE OF NOTICE, REPORT, OR OTHER DATA

REQUEST FOR APPROVAL TO:

SUBSEQUENT REPORT OF:

TEST WATER SHUT-OFF ☐  
FRACTURE TREAT ☐  
SHOOT OR ACIDIZE ☐  
REPAIR WELL ☐  
PULL OR ALTER CASING ☐  
MULTIPLE COMPLETE ☐  
CHANGE ZONES ☐  
ABANDON\* ☐

☐  
☐  
☐  
☐  
☐  
☐  
☐  
☐

(other) Change access road

5. LEASE

NM-19582

6. IF INDIAN, ALLOTTEE OR TRIBE NAME

7. UNIT AGREEMENT NAME

RECEIVED

8. FARM OR LEASE NAME

Gragg Fed. "A"

MAR 11 1983

9. WELL NO.

1

O. C. D.  
ARTESIA, OFFICE

10. FIELD OR WILDCAT NAME

Wildcat

11. SEC., T., R., M., OR BLK. AND SURVEY OR AREA

Sec. 24-T14S-R22E

12. COUNTY OR PARISH

Chaves

13. STATE

NM

14. API NO.

15. ELEVATIONS (SHOW DF, KDB, AND WD)  
3975' G.L.

(NOTE: Report results of multiple completion or zone change on Form 9-330.)

17. DESCRIBE PROPOSED OR COMPLETED OPERATIONS (Clearly state all pertinent details, and give pertinent dates, including estimated date of starting any proposed work. If well is directionally drilled, give subsurface locations and measured and true vertical depths for all markers and zones pertinent to this work.)\*

Request change of access road to location as shown on enclosed map.  
Request change of well location from 660' FSL & 660' FWL to 660' FWL & 760' FSL.

RECEIVED

FEB 23 1983

OIL & GAS  
MINERALS MGMT. SERVICE  
ROSWELL, NEW MEXICO

Subsurface Safety Valve: Manu. and Type \_\_\_\_\_ Set @ \_\_\_\_\_ Ft.

18. I hereby certify that the foregoing is true and correct

SIGNED Mark McClellan TITLE Geologist DATE 2-11-83

APPROVED

(This space for Federal or State office use)

APPROVED BY  
CONDITIONS OF

(ORIG. SGD.) DAVID R. GLASS

TITLE

DATE

MAR 9 1983

For JAMES A. GILLHAM  
DISTRICT SUPERVISOR

\*See Instructions on Reverse Side

All distances must be from the outer boundaries of the section.

|                                  |                                 |                      |                    |                         |                |
|----------------------------------|---------------------------------|----------------------|--------------------|-------------------------|----------------|
| Operator<br>McClellan Oil Corp.  |                                 |                      | Lease<br>Gragg 'A' |                         | Well No.<br>#1 |
| Unit Letter<br>M                 | Section<br>24                   | Township<br>14 South | Range<br>22 East   | County<br>Chaves        |                |
| Actual Footage Location of Well: |                                 |                      |                    |                         |                |
| 760                              | feet from the                   | South                | line end           | 660                     | feet from the  |
| Ground Level Elev.<br>3975       | Producing Formation<br>Wolfcamp |                      | Pool<br>Wildcat    | Dedicated Acreage<br>40 | Acres          |

1. Outline the acreage dedicated to the subject well by colored pencil or hatchure marks on the plat below.

2. If more than one lease is dedicated to the well, outline each and identify the ownership thereof (both as to working interest and royalty).

3. If more than one lease of different ownership is dedicated to the well, have the interests of all owners been consolidated by communitization, unitization, force-pooling, etc?

☐ Yes ☐ No If answer is "yes," type of consolidation \_\_\_\_\_

If answer is "no," list the owners and tract descriptions which have actually been consolidated. (Use reverse side of this form if necessary.) \_\_\_\_\_

No allowable will be assigned to the well until all interests have been consolidated (by communitization, unitization, forced-pooling, or otherwise) or until a non-standard unit, eliminating such interests, has been approved by the Division.

Sec. 24, T.14 S., R.22 E., N.M.P.M.

660'

760'

#### CERTIFICATION

I hereby certify that the information contained herein is true and complete to the best of my knowledge and belief.

*Mark McClellan*

Name  
Mark McClellan

Position  
Geologist

Company  
McClellan Oil Corporation

Date  
December 24, 1982

I hereby certify that the well location shown on this plat was plotted from field notes of actual surveys made by me or under my supervision, and that the same is true and correct to the best of my knowledge and belief.

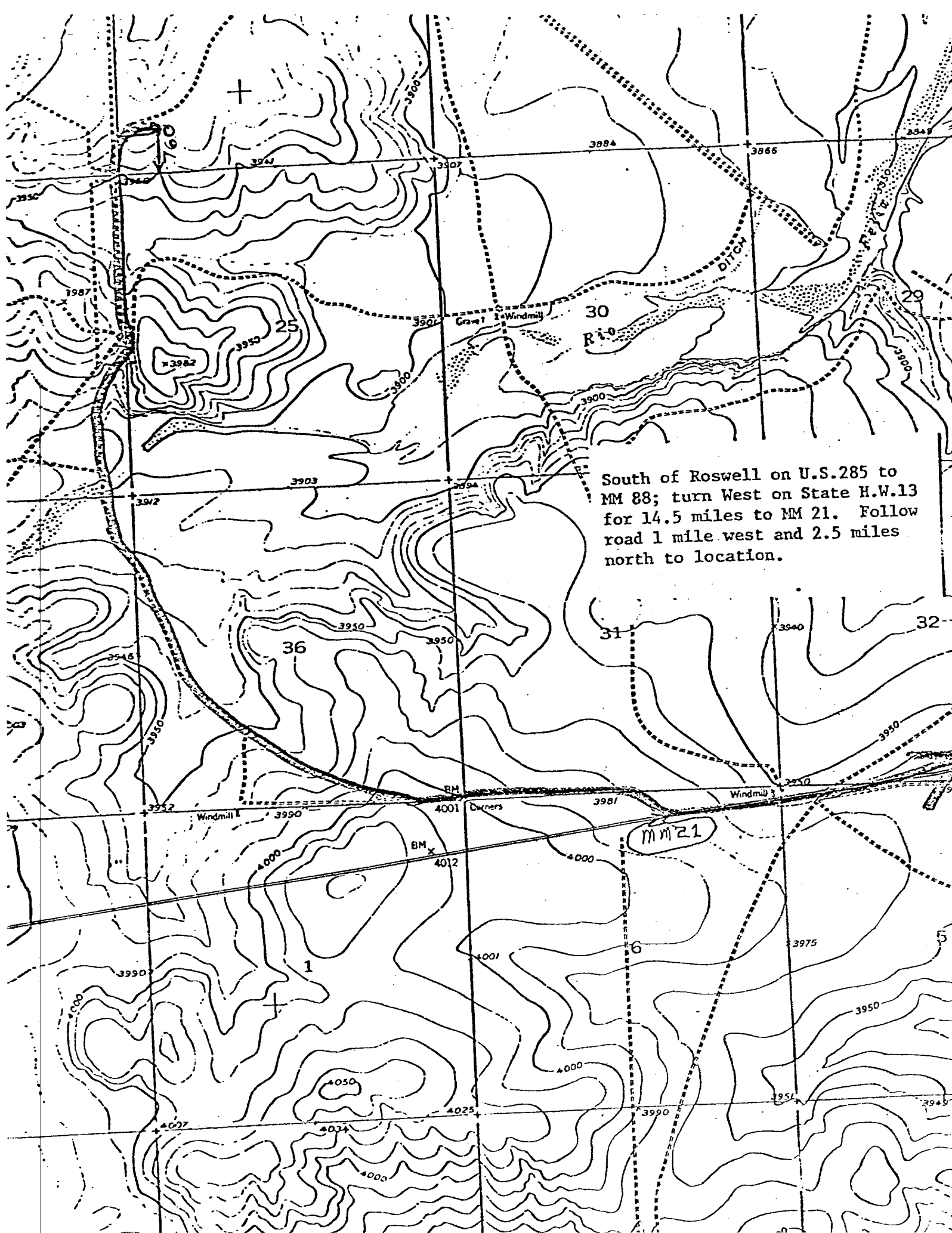
Date Surveyed  
December 24, 1982

Registered Professional Engineer  
and/or Land Surveyor

*John D. Jacques*

John D. Jacques, P.E. & L.S.

6290



South of Roswell on U.S.285 to  
MM 88; turn West on State H.W.13  
for 14.5 miles to MM 21. Follow  
road 1 mile west and 2.5 miles  
north to location.