

UNITED STATES
DEPARTMENT OF THE INTERIOR
GEOLOGICAL SURVEY

MAR 11 1983

O. C. D.

APPLICATION FOR PERMIT TO DRILL, DEEPEN, OR PLUG BACK

1a. TYPE OF WORK

DRILL ☒DEEPEN ☐PLUG BACK ☐

b. TYPE OF WELL

OIL
WELL ☐GAS
WELL ☒

OTHER

SINGLE
ZONE ☐MULTIPLE
ZONE ☐

2. NAME OF OPERATOR

Yates Petroleum Corporation ✓

3. ADDRESS OF OPERATOR

207 S. 4th, Artesia, New Mexico 88210

4. LOCATION OF WELL (Report location clearly and in accordance with any State requirements.)

At surface

990' FNL and 800' FEL

At proposed prod. zone

same

14. DISTANCE IN MILES AND DIRECTION FROM NEAREST TOWN OR POST OFFICE*

15. DISTANCE FROM PROPOSED*

LOCATION TO NEAREST
PROPERTY OR LEASE LINE, FT.
(Also to nearest drlg. unit line, if any)

760'

18. DISTANCE FROM PROPOSED LOCATION*

TO NEAREST WELL, DRILLING, COMPLETED,
OR APPLIED FOR, ON THIS LEASE, FT.

19. PROPOSED DEPTH

4350'

20. ROTARY OR CABLE TOOLS

Rotary

21. ELEVATIONS (Show whether DF, RT, GR, etc.)

3632.1' GL

22. APPROX. DATE WORK WILL START*

ASAP

23. PROPOSED CASING AND CEMENTING PROGRAM

SIZE OF HOLE	SIZE OF CASING	WEIGHT PER FOOT	SETTING DEPTH	QUANTITY OF CEMENT
14 3/4"	10 3/4"	40.5# J-55	900'	600 sx circulated
7 7/8"	4 1/2"	9.5# J-55	TD	350 sx

We propose to drill and test the Abo and intermediate formations. Approximately 900' of surface casing will be set and cement circulated to shut off gravel and caving. If needed (lost circulation) 8 5/8" intermediate casing will be run to 1500' and cemented with enough cement calculated to tie back into the surface casing. If commercial, production casing will be run and cemented with adequate cover, perforated and stimulated as needed for production.

MUD PROGRAM: FW gel/LCM to 900', Brine to 3200', Brine/KCL water to TD.

BOP PROGRAM: BOP's will be installed at the offset and tested daily.

GAS NOT DEDICATED.

IN ABOVE SPACE DESCRIBE PROPOSED PROGRAM: If proposal is to deepen or plug back, give data on present productive zone and proposed new productive zone. If proposal is to drill or deepen directionally, give pertinent data on subsurface locations and measured and true vertical depths. Give blowout preventer program, if any.

24.

SIGNED

G. C. D.

TITLE Regulatory Agent

DATE 2/23/83

(This space for Federal or State office use)

PERMIT NO.

APPROVED

APPROVAL DATE

APPROVED BY

(ORIG. SGD.) DAVID R. GLASS

TITLE

DATE

CONDITIONS OF

APPROVAL BY DATE

MAR 9 1983

For JAMES A. GILLHAM
DISTRICT SUPERVISORAPPROVAL SUBJECT TO
GENERAL REQUIREMENTS AND
SPECIAL STIPULATIONS
ATTACHED*Posted 2/23/83
10-14-83
3-18-83*

NEW MEXICO OIL CONSERVATION COMMISSION
WELL LOCATION AND ACREAGE DEDICATION PLAT

Form C-102
Supersedes C-128
Effective 1-1-65

All distances must be from the outer boundaries of the Section.

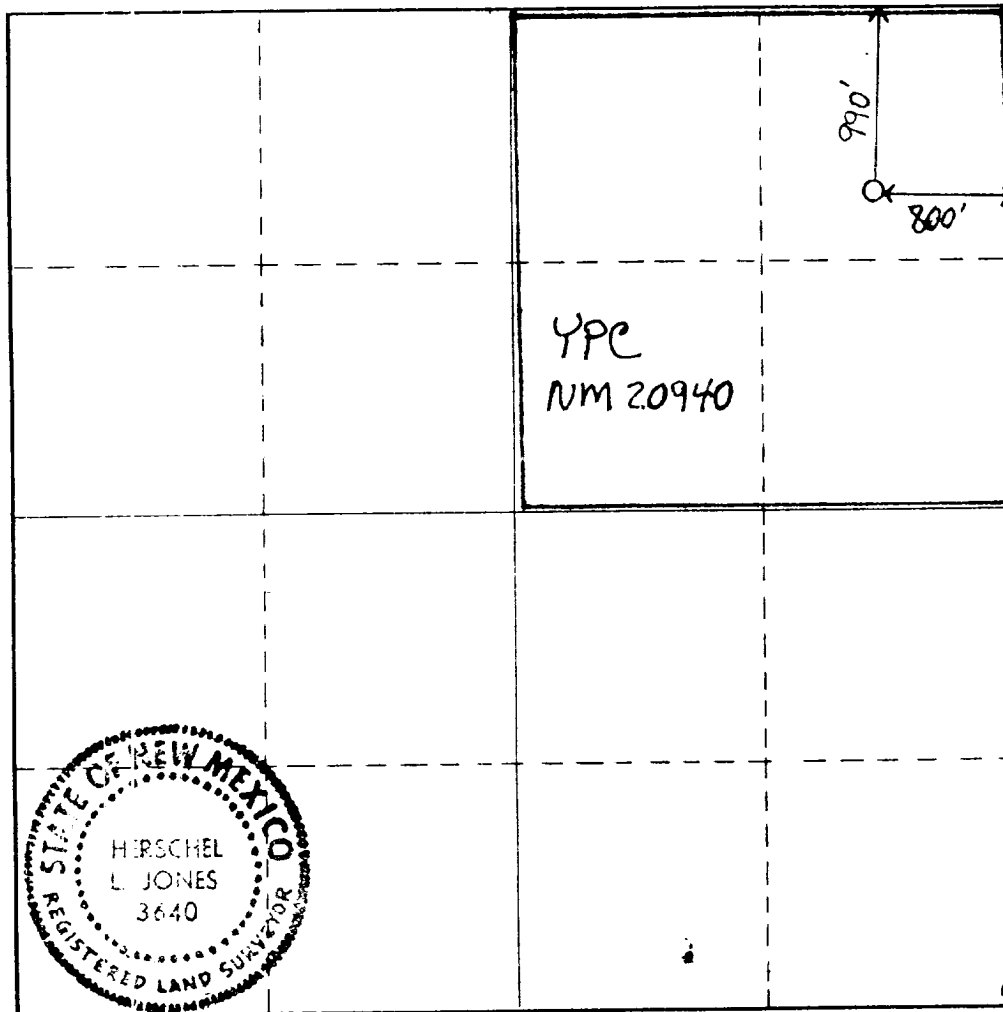
Operator YATES PETROLEUM CORPORATION			Lease Ingram "WY" Federal		Well No. 1
Unit Letter A	Section 18	Township 7 South	Range 26 East	County Chaves	
Actual Location of Well: 990 feet from the North line and 800 feet from the East line					
Ground Level Elev. 3632.1' GL	Producing Formation ABO	Pool Pecos Slope ABO		Dedicated Acreage: 160 Acres	

- Outline the acreage dedicated to the subject well by colored pencil or hachure marks on the plat below.
- If more than one lease is dedicated to the well, outline each and identify the ownership thereof (both as to working interest and royalty).
- If more than one lease of different ownership is dedicated to the well, have the interests of all owners been consolidated by communitization, unitization, force-pooling, etc?

☐ Yes ☒ No If answer is "yes," type of consolidation _____

If answer is "no," list the owners and tract descriptions which have actually been consolidated. (Use reverse side of this form if necessary.) _____

No allowable will be assigned to the well until all interests have been consolidated (by communitization, unitization, force-pooling, or otherwise) or until a non-standard unit, eliminating such interests, has been approved by the Commission.



CERTIFICATION

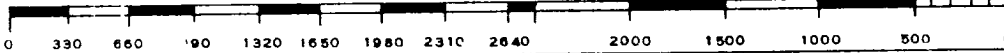
I hereby certify that the information contained herein is true and complete to the best of my knowledge and belief.

Cy Cowan
Name
Cy Cowan
Position
Regulatory Agent
Company
Yates Petroleum Corp.
Date
2/21/83

I hereby certify that the well location shown on this plat was plotted from field notes of actual surveys made by me or under my supervision, and that the same is true and correct to the best of my knowledge and belief.

Date Surveyed
February 14, 1983
Registered Professional Engineer
and/or Land Surveyor

Herschel L. Jones
Certificate No.
3640



YATES PETROLEUM CORPORATION
Ingram "WY " Federal #1
990' FNL and 800' FEL
Sec. 18-T7S-R26E

In conjunction with Form 9-331C, Application for Permit to Drill subject well, Yates Petroleum Corporation submits the following ten items of pertinent information in accordance with USGS requirements.

1. The geologic surface formation is sandy alluvium.
2. The estimated tops of geologic markers are as follows:

San Andres	400'
Glorieta	1520'
Fullerton	2939'
Abo	3622'
TD	4350'

3. The estimated depths at which anticipated water, oil or gas formations are expected to be encountered:

Water: 100' - 200'

Oil or Gas: 3670'

4. Proposed Casing Program: See Form 9-331C.
5. Pressure Control Equipment: See Form 9-331C and Exhibit B.
6. Mud Program: See Form 9-331C.
7. Auxiliary Equipment: Kelly Cock; pit level indicators and flow sensor equipment; sub with full-opening valve on floor, drill pipe connection.
8. Testing, Logging and Coring Program:

Samples: Surface casing to TD.

DST's: As warranted.

Coring: None

Logging: CNL-FDC TD to csg w/GR-CNL onto surface & DLL from TD to csg..

9. No abnormal pressures or temperatures are anticipated.
10. Anticipated starting date: As soon as possible after approval.

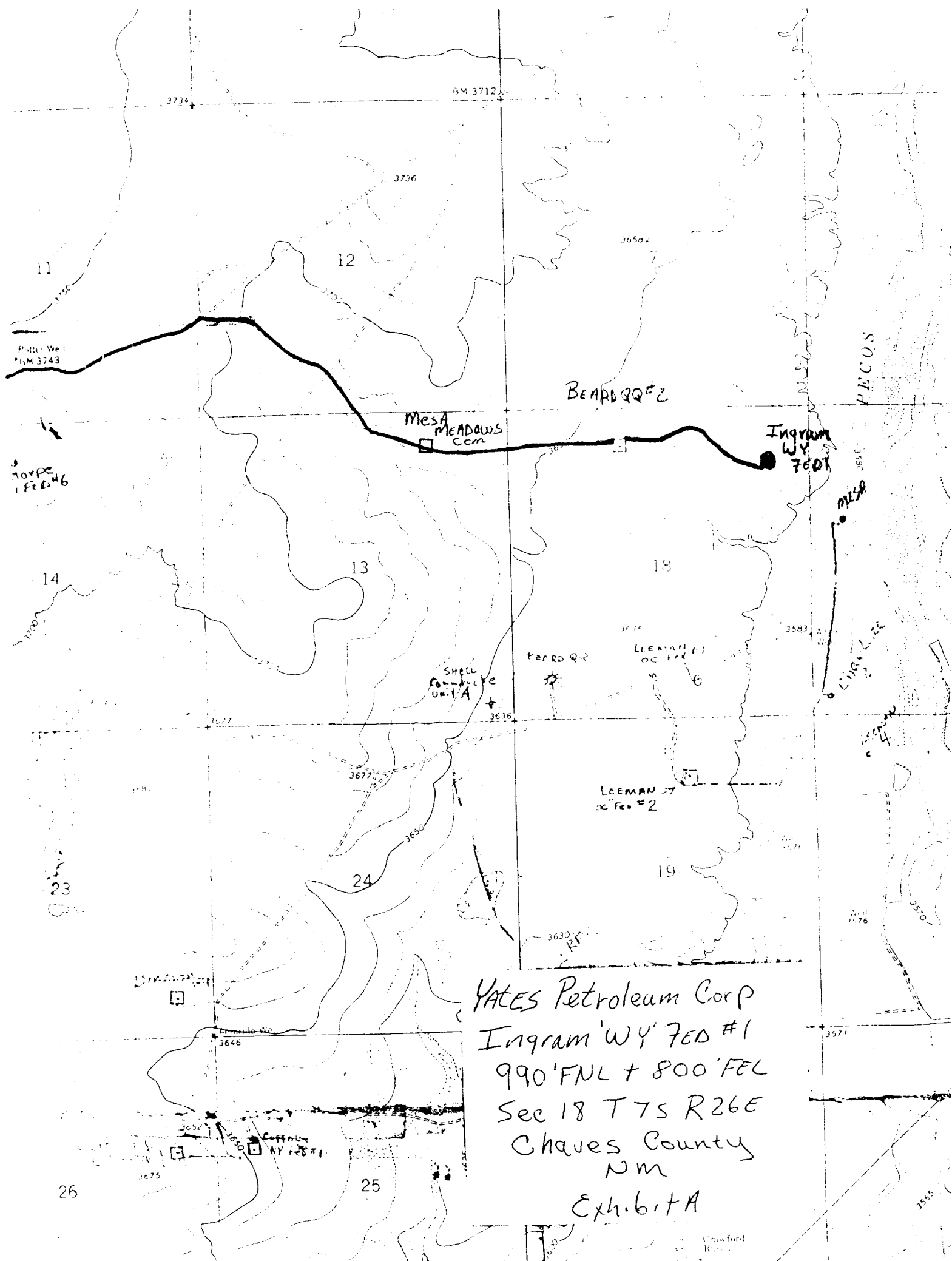
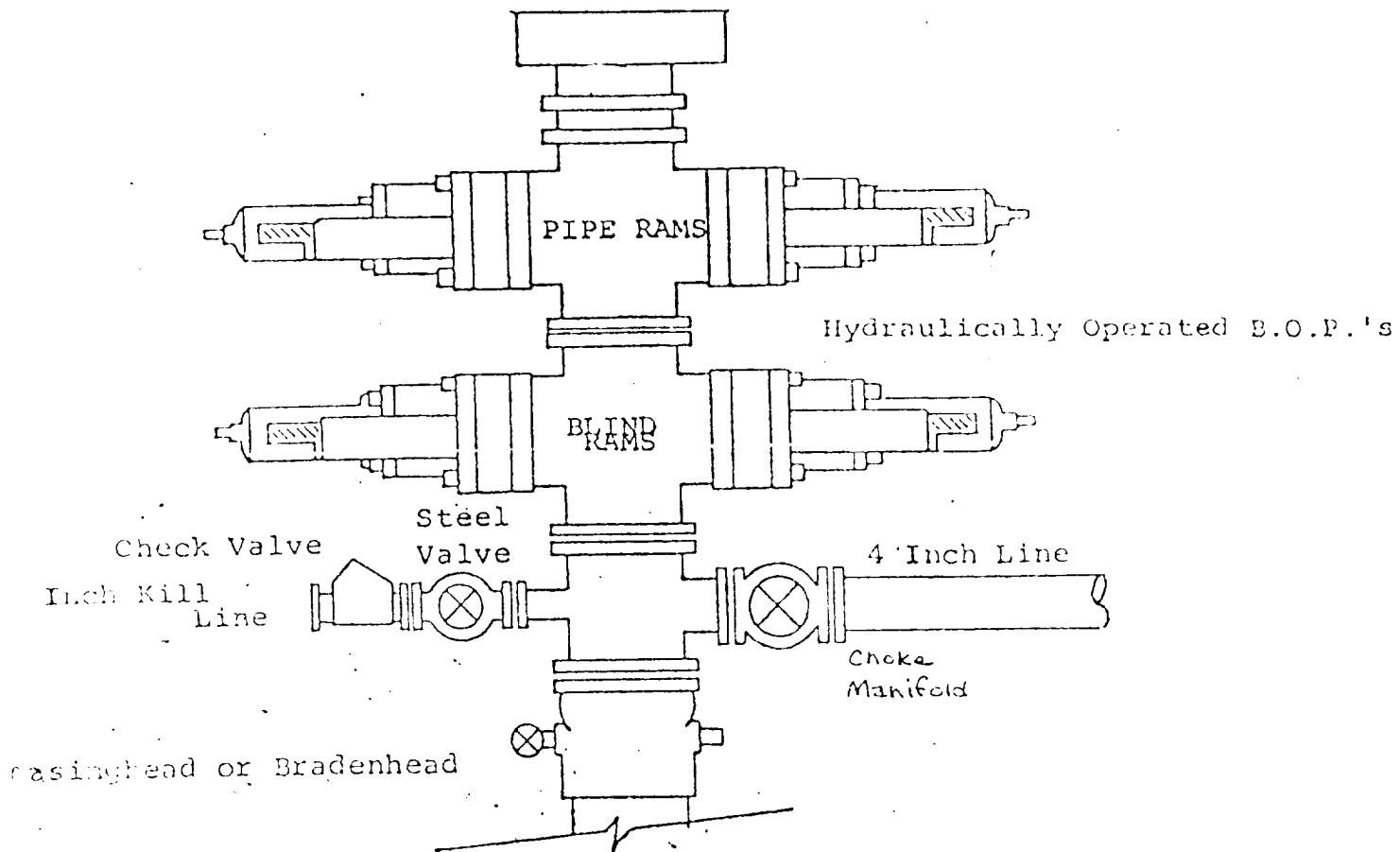
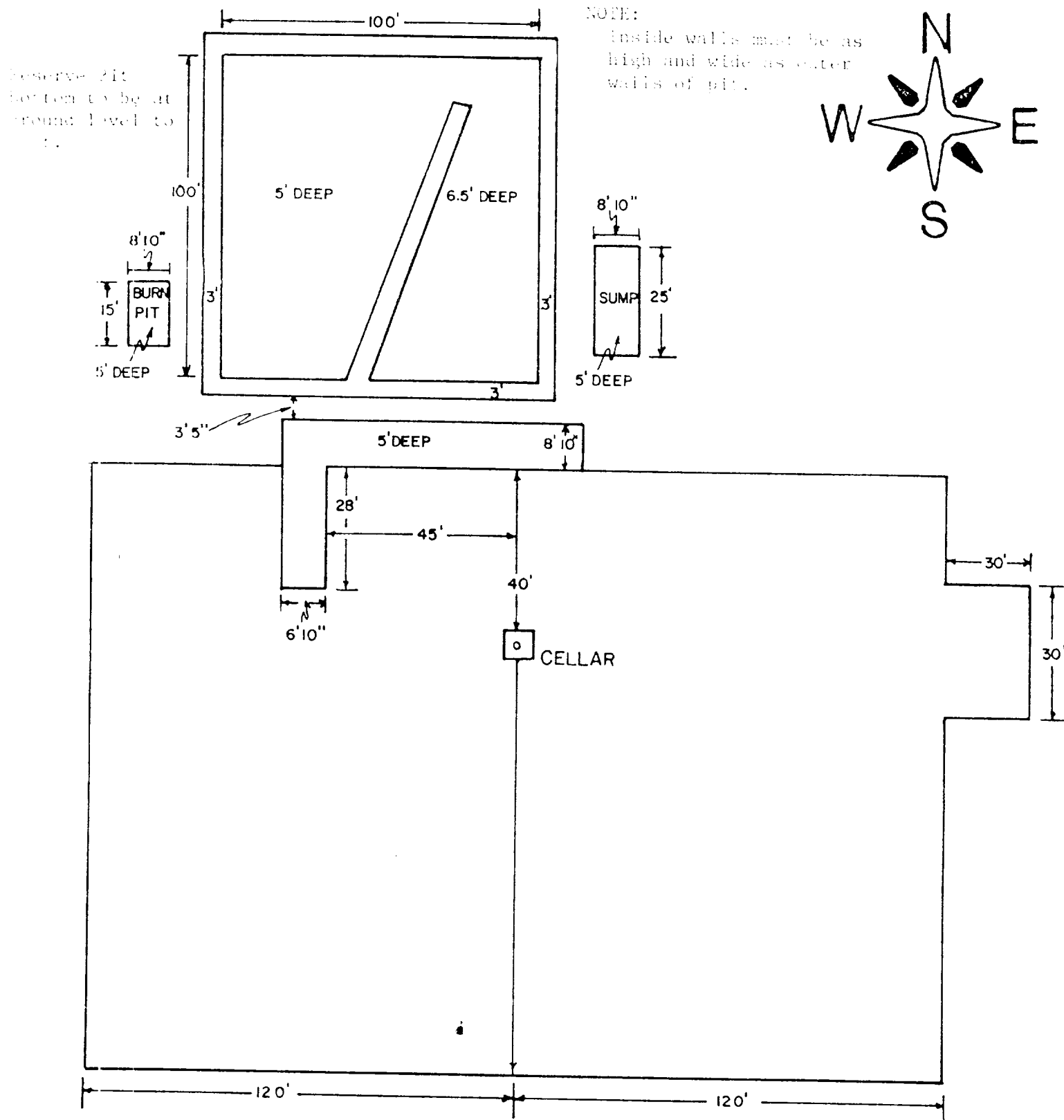


EXHIBIT B
BDP DIAGRAM



YATES PETROLEUM CORP.
Exhibit C





207 SOUTH FOURTH STREET
ARTESIA, NEW MEXICO 88210

TELEPHONE (505) 748-1331

NM OIL CONS. COMMISSION
Drawer DD
Artesia, NM 88210

S. P. YATES
PRESIDENT
MARTIN YATES, III
VICE PRESIDENT
JOHN A. YATES
VICE PRESIDENT
B. W. HARPER
SEC. TREAS.

February 16, 1983

Mr. George Stewart
USGS
Federal Building
Roswell, New Mexico 88201

Re: Ingram "WY" Federal #1
990' FNL and 800' FEL
Sec. 18-T7S-R26E

Dear Mr. Stewart,

Yates Petroleum Corporation has submitted an application to drill a well on surface owned by Spool Cattle Co. of Amarillo, Texas (Jim Walker, President. This is located in Section 18-T7S-R26E, 990' FNL and 800' FEL.

In an on-site visit with Randall Jones, Foreman, it was agreed that we would compensate Spool Cattle Co. monetarily for the surface damages incurred. After drilling has been completed the pit area will be leveled after it is dry and along with the pad will be left to reseed naturally.

Sincerely,

Cy Cowan
Regulatory Agent
YATES PETROLEUM CORPORATION

CC/dw

RECEIVED

MAR 1 1983

OIL & GAS
MINERALS MGMT. SERVICE
ROSWELL, NEW MEXICO