

UNITED STATES ~~DD~~ NM OIL CONS. COMMISSION  
DEPARTMENT OF THE INTERIOR ~~DD~~  
GEOLOGICAL SURVEY ~~Artesia, NM~~ 88210

## APPLICATION FOR PERMIT TO DRILL, DEEPEN, OR PLUG BACK

## 1a. TYPE OF WORK

DRILL ☒DEEPEN ☐PLUG BACK ☐

## b. TYPE OF WELL

OIL  
WELL ☐GAS  
WELL ☒

OTHER

SINGLE  
ZONE ☐MULTIPLE  
ZONE ☐

## 2. NAME OF OPERATOR

Yates Petroleum Corporation

## 3. ADDRESS OF OPERATOR

207 S. 4th Street, Artesia, New Mexico 88210

## 4. LOCATION OF WELL (Report location clearly and in accordance with any State requirements.)\*

At surface

1980' FSL &amp; 1980' FWL

At proposed prod. zone

Same

## 14. DISTANCE IN MILES AND DIRECTION FROM NEAREST TOWN OR POST OFFICE

12 miles NE of Roswell, NM

## 15. DISTANCE FROM PROPOSED\*

LOCATION TO NEAREST

PROPERTY OR LEASE LINE, FT.

(Also to nearest drlg. unit line, if any)

1980'

## 18. DISTANCE FROM PROPOSED LOCATION\*

TO NEAREST WELL, DRILLING, COMPLETED,  
OR APPLIED FOR, ON THIS LEASE, FT.

1/2 mile

## 16. NO. OF ACRES IN LEASE

880

## 19. PROPOSED DEPTH

4600'

17. NO. OF ACRES ASSIGNED  
TO THIS WELL

160

## 20. ROTARY OR CABLE TOOLS

Rotary

## 21. ELEVATIONS (Show whether DF, RT, GR, etc.)

3741.4 GL

## 22. APPROX. DATE WORK WILL START\*

ASAP

## PROPOSED CASING AND CEMENTING PROGRAM

SIZE OF HOLE	SIZE OF CASING	WEIGHT PER FOOT	SETTING DEPTH	QUANTITY OF CEMENT
14 3/4	10 3/4	40.5 #J-55	1100'	800 Cmc
7 7/8	4 1/2	9.5 #	TD	350

We propose to drill and test the Abo and intermediate formations. Approximately 1100' of surface casing will be set and cement circulated to shut off gravel and caving. If needed (lost circulation) 8 5/8 intermediate casing will be run to 1500' and cemented with enough cement calculated to tie back into the surface casing. Temperature survey will be run to determine cement top. If commercial, production casing will be run and cemented with adequate cover, perforate, and stimulate as needed for production.

MUD PROGRAM: FW Gel & LCM to 1100' Brine to 3500', Brine & KCL Water to TD

BOP PROGRAM: BOP's will be installed at the offset and tested daily.

GAS NOT DEDICATED.

IN ABOVE SPACE DESCRIBE PROPOSED PROGRAM: If proposal is to deepen or plug back, give data on present productive zone and proposed new productive zone. If proposal is to drill or deepen directionally, give pertinent data on subsurface locations and measured and true vertical depths. Give blowout preventer program, if any.

SIGNED

*Cy Cameron*

TITLE

Regulatory Agent

DATE March 22, 1983

(This space for Federal or State office use)

PERMIT NO.

APPROVED

APPROVAL DATE

APPROVED BY

TITLE

DATE

CONDITIONS OF

MAR 28 1983

JAMES A. GILLHAM  
DISTRICT SUPERVISORAPPROVAL SUBJECT TO  
GENERAL REQUIREMENTS AND  
SPECIAL STIPULATIONS  
ATTACHED

MAR 24 1983

OIL & GAS  
U.S. GEOLOGICAL SURVEY  
ROSWELL, NEW MEXICO

50-005-61973

C/S

5. LEASE DESIGNATION AND SERIAL NO.

NM-18607

6. IF INDIAN, ALLOTTEE OR TRIBE NAME

7. UNIT AGREEMENT NAME

8. FARM OR LEASE NAME

Rita "TZ" Fed.

9. WELL NO.

2

10. FIELD AND POOL, OR WILDCAT

Pecos Slope Abo

11. SEC. T, R, M., OR BLK.  
AND SURVEY OR AREA

Sec. 4, T8S, R26E

12. COUNTY OR PARISH

13. STATE

Chaves

NM

**NEW MEXICO OIL CONSERVATION COMMISSION  
WELL LOCATION AND ACREAGE DEDICATION PLAT**

Form C-102  
Supersedes C-128  
Effective 1-1-65

All distances must be from the outer boundaries of the Section.

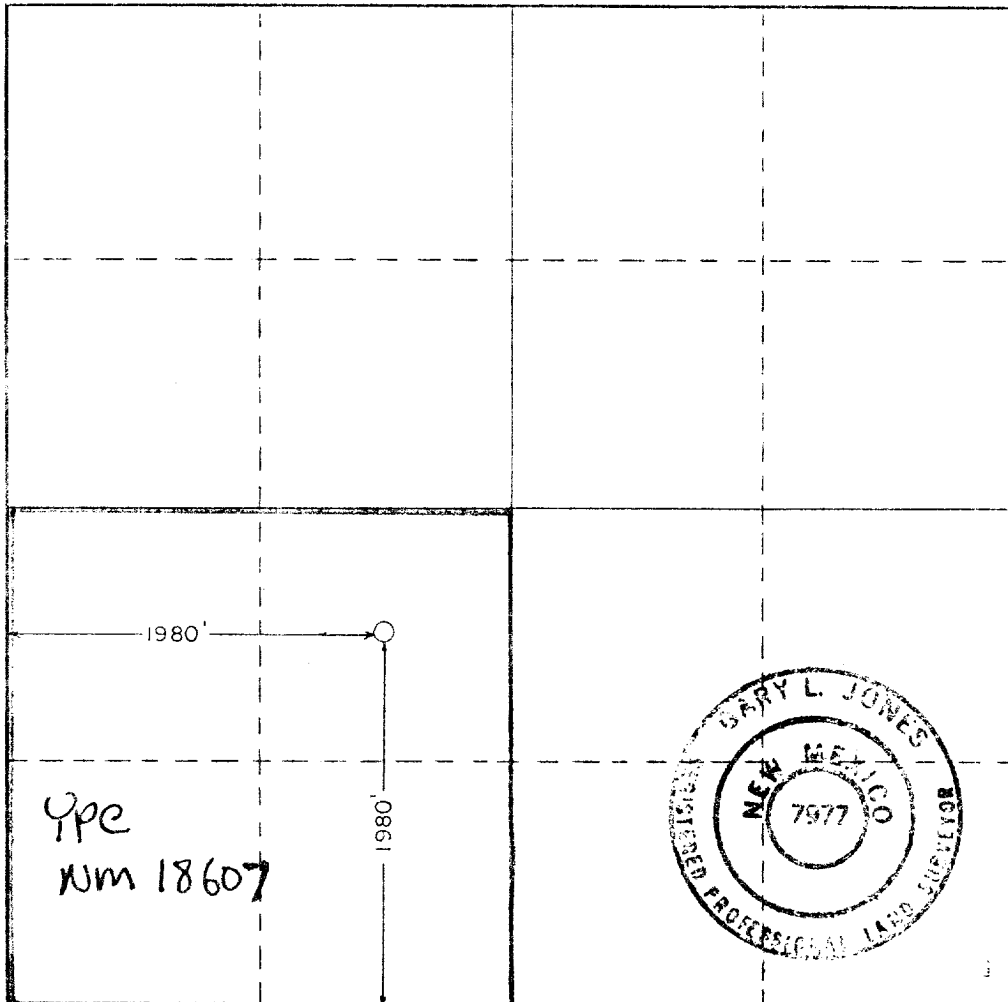
Operator <b>YATES PETROLEUM CORPORATION</b>			Lease <b>Rita T2 Federal</b>		Well No. <b>2</b>
Unit Letter <b>K</b>	Section <b>4</b>	Township <b>8 South</b>	Range <b>26 East</b>	County <b>Chaves</b>	
Actual Footage Location of Well:					
1980 feet from the <b>South</b> line and		1980 feet from the <b>West</b> line			
Ground Level Elev. <b>3741.4</b>	Producing Formation <b>ABO</b>	Foot <b>Pecos Slope ABO</b>	Dedicated Acreage: <b>160</b> Acres		

1. Outline the acreage dedicated to the subject well by colored pencil or hachure marks on the plat below.
2. If more than one lease is dedicated to the well, outline each and identify the ownership thereof (both as to working interest and royalty).
3. If more than one lease of different ownership is dedicated to the well, have the interests of all owners been consolidated by communitization, unitization, force-pooling, etc?

☐ Yes    ☒ No    If answer is "yes," type of consolidation \_\_\_\_\_

If answer is "no," list the owners and tract descriptions which have actually been consolidated. (Use reverse side of this form if necessary.) \_\_\_\_\_

No allowable will be assigned to the well until all interests have been consolidated (by communitization, unitization, forced-pooling, or otherwise) or until a non-standard unit, eliminating such interests, has been approved by the Commission.



**CERTIFICATION**

I hereby certify that the information contained herein is true and complete to the best of my knowledge and belief.

*Cy Coura*  
Name  
Regulatory Agent  
Position  
Yates Petroleum Corp.  
Company  
March 22, 1983  
Date

I hereby certify that the well location shown on this plat was plotted from field notes of actual surveys made by me or under my supervision, and that the same is true and correct to the best of my knowledge and belief.

Date Surveyed  
March 12, 1983  
Registered Professional Engineer  
and/or Land Surveyor

*Barry L. Jones*  
Certificate No. 7977

0 330 660 990 1320 1650 1980 2310 2640 2000 1500 1000 500 0

## YATES PETROLEUM CORPORATION

Rita TZ Fed. #21980 FSL & 1980 FWLSec. 4, T8S, R26E

In conjunction with Form 9-331C, Application for Permit to Drill subject well, Yates Petroleum Corporation submits the following ten items of pertinent information in accordance with USGS requirements.

1. The geologic surface formation is Sandy Alluvium.

2. The estimated tops of geologic markers are as follows:

SA	730'
Glo	1866'
Full	3288'
Abo	3986'
TD	4600'

3. The estimated depths at which anticipated water, oil or gas formations are expected to be encountered:

Water: 250'-350'

Oil or Gas: 4010'

4. Proposed Casing Program: See Form 9-331C.

5. Pressure Control Equipment: See Form 9-331C and Exhibit B.

6. Mud Program: See Form 9-331C.

7. Auxiliary Equipment: Kelly Cock; pit level indicators and flow sensor equipment;  
sub with full-opening valve on floor, drill pipe connection.

8. Testing, Logging and Coring Program:

Samples: Surf CSG to TD

DST's: As Warrented

Coring: None Anticipated

Logging: CNL FDC TD to Casing w/Gr-CNL to surface & DLL from TD to casing w/RXO

9. No abnormal pressures or temperatures are anticipated.

10. Anticipated starting date: As soon as possible after approval.

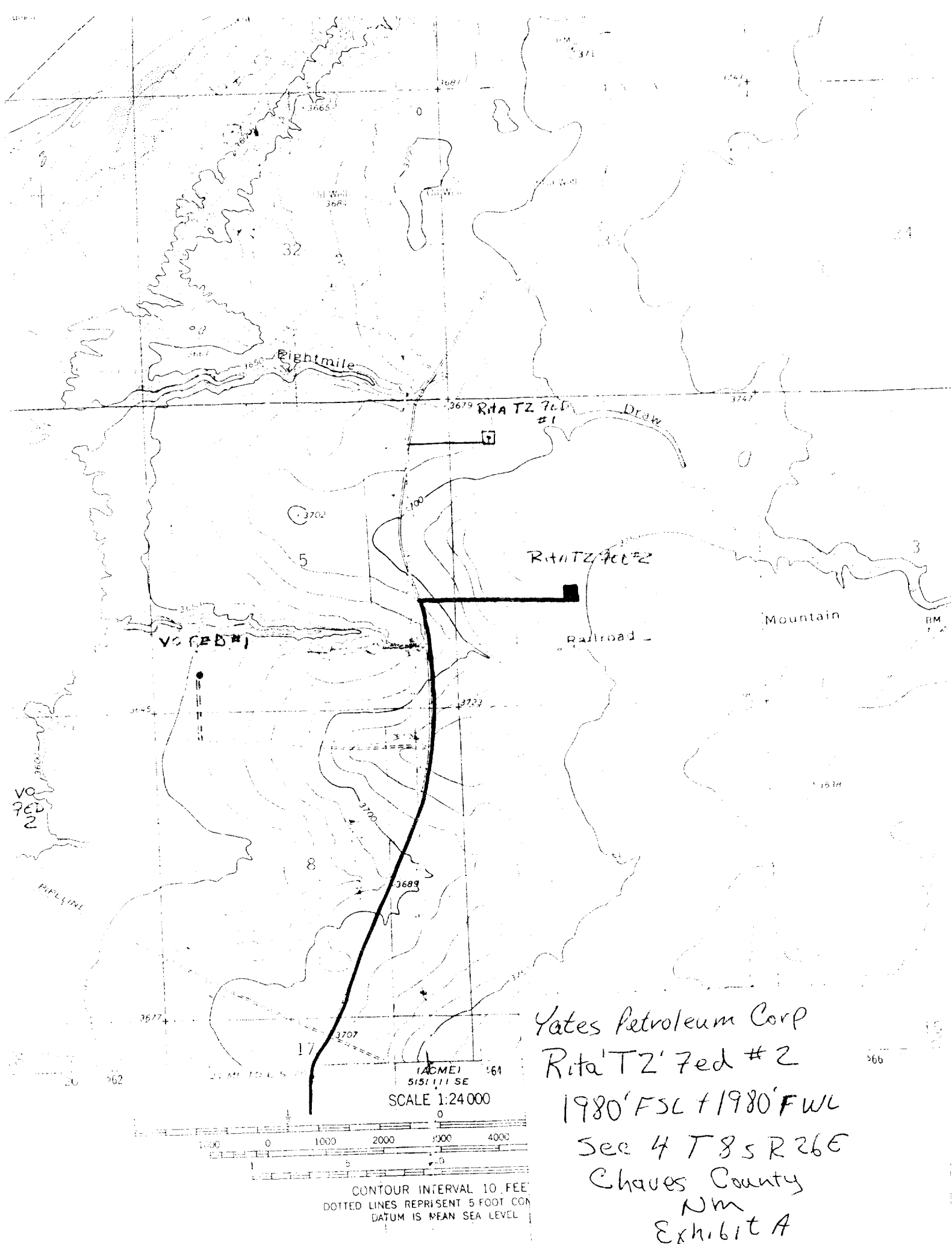
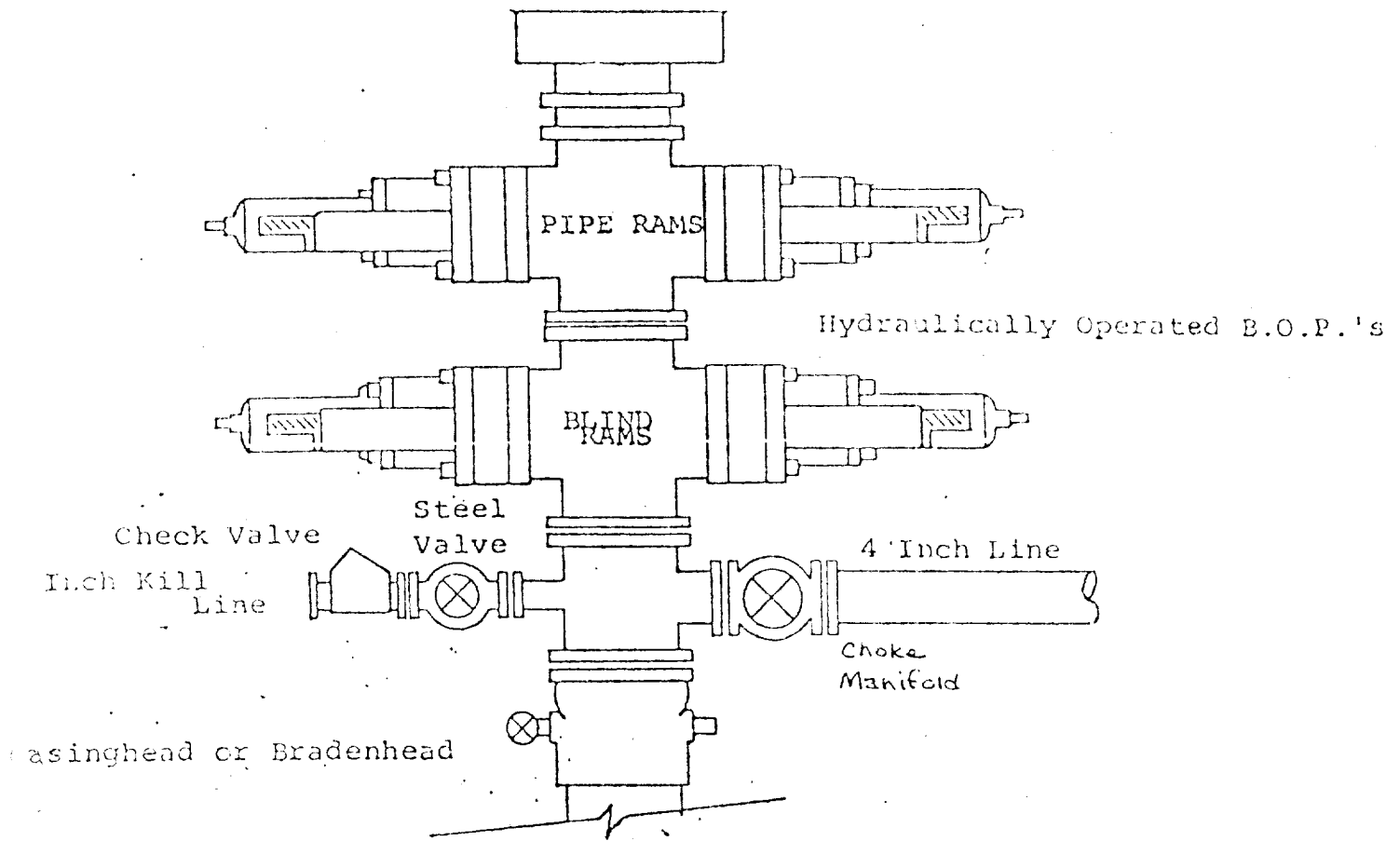


EXHIBIT B

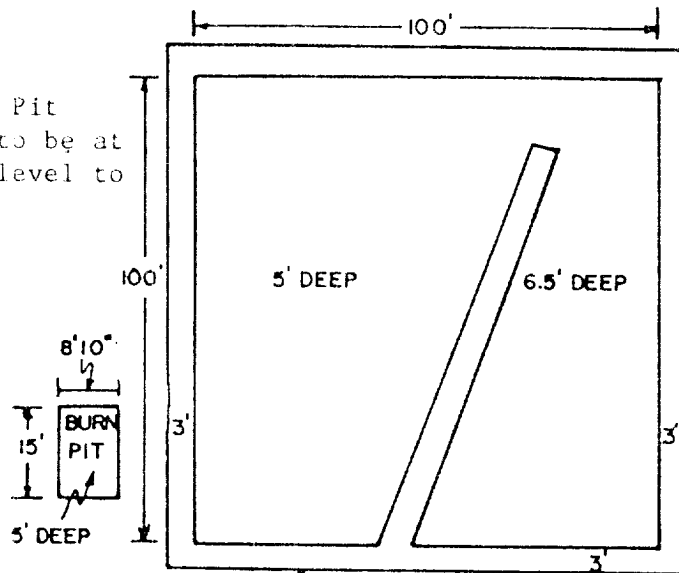
BDP DIAGRAM



# YATES PETROLEUM CORP.

## Exhibit C

Reserve Pit  
bottom to be at  
ground level to  
1 ft.



NOTE:

Inside walls must be as  
high and wide as outer  
walls of pit.

