

UNITED STATES
DEPARTMENT OF THE INTERIOR
GEOLOGICAL SURVEY

(Other instructions on reverse side.)

NM OIL CONS. COMMISSION

Drawer DD

Artesia, NM 88210

5. LEASE D

NM-281

APPLICATION FOR PERMIT TO DRILL, DEEPEN, OR PLUG BACK

1. TYPE OF WORK DRILL <input checked="" type="checkbox"/> DEEPEN <input type="checkbox"/> RECEIVING BACK <input type="checkbox"/>		7. UNIT AGREEMENT NAME	
2. NAME OF OPERATOR Yates Petroleum Corporation ✓		8. FARM OR LEASE NAME Spear "OA" Federal	
3. ADDRESS OF OPERATOR 207 S. 4th, Artesia, New Mexico 88213		9. WELL NO. 2	
4. LOCATION OF WELL (Report location clearly and in accordance with any State requirements.) 660' FNL and 660' FWL		10. FIELD AND POOL, OR WILDCAT Pecos Slope Abo	
5. AT PROPOSED PROD. ZONE same		11. SEC., T., R., M., OR BLK. AND SURVEY OR AREA Sec. 15-T9S-R26E	
14. DISTANCE IN MILES AND DIRECTION FROM NEAREST TOWN OR POST OFFICE* Approximately 18 miles east of Roswell, NM.		12. COUNTY OR PARISH 13. STATE Chaves NM	
15. DISTANCE FROM PROPOSED LOCATION TO NEAREST PROPERTY OR LEASE LINE, FT. (Also to nearest drlg. unit line, if any) 660'	16. NO. OF ACRES IN LEASE 1000	17. NO. OF ACRES ASSIGNED TO THIS WELL 160	
18. DISTANCE FROM PROPOSED LOCATION TO NEAREST WELL, DRILLING COMPLETED, OR APPLIED FOR, ON THIS LEASE, FT. 1 mile	19. PROPOSED DEPTH 5000'	20. ROTARY OR CABLE TOOLS Rotary	
21. ELEVATIONS (Show whether DF, RT, GR, etc.) 3784.7' GL		22. APPROX. DATE WORK WILL START* ASAP	

SIZE OF HOLE	SIZE OF CASING	WEIGHT PER FOOT	SETTING DEPTH	QUANTITY OF CEMENT
14 3/4"	10 3/4"	40.5# J-55	1000'	800 sx circulated
7 7/8"	4 1/2"	9.5# J-55	TD	350 sx

We propose to drill and test the Abo and intermediate formations. Approximately 1100' of surface casing will be set and cement circulated to shut off gravel and caving. If needed (lost circulation) 8 5/8" intermediate casing will be run to 1500' and cemented with enough cement calculated to tie back into the surface casing. If commercial, production casing will be run and cemented with adequate cover, perforated and stimulated as needed for production.

MUD PROGRAM: FW gel/LCM to 1100', Brine to 3200', Brine & KCL water to TD.

BOP PROGRAM: BOP's will be installed at the offset and tested daily.

GAS NOT DEDICATED.

IN ABOVE SPACE DESCRIBE PROPOSED PROGRAM: If proposal is to deepen or plug back, give data on present productive zone and proposed new productive zone. If proposal is to drill or deepen directionally, give pertinent data on subsurface locations and measured and true vertical depths. Give blowout preventer program, if any.

21

SIGNATURE _____

TITLE Regulatory Agent

DATE 3/23/83

(This space for ~~Federal or State~~ office use)

1923-24 No.

APPROVAL DATE

APPENDIX B

TITLE

DATE

CONDITIONS OF APPROVAL: ~~None~~

JAMES A. GILLHAM
DISTRICT SUPERVISOR

APPROVAL SUBJECT TO
GENERAL REQUIREMENTS AND
SPECIAL STIPULATIONS
ATTACHED

**NEW MEXICO OIL CONSERVATION COMMISSION
WELL LOCATION AND ACREAGE DEDICATION PLAT**

Form C-102
Supersedes C-128
Effective 1-1-65

All distances must be from the outer boundaries of the Section.

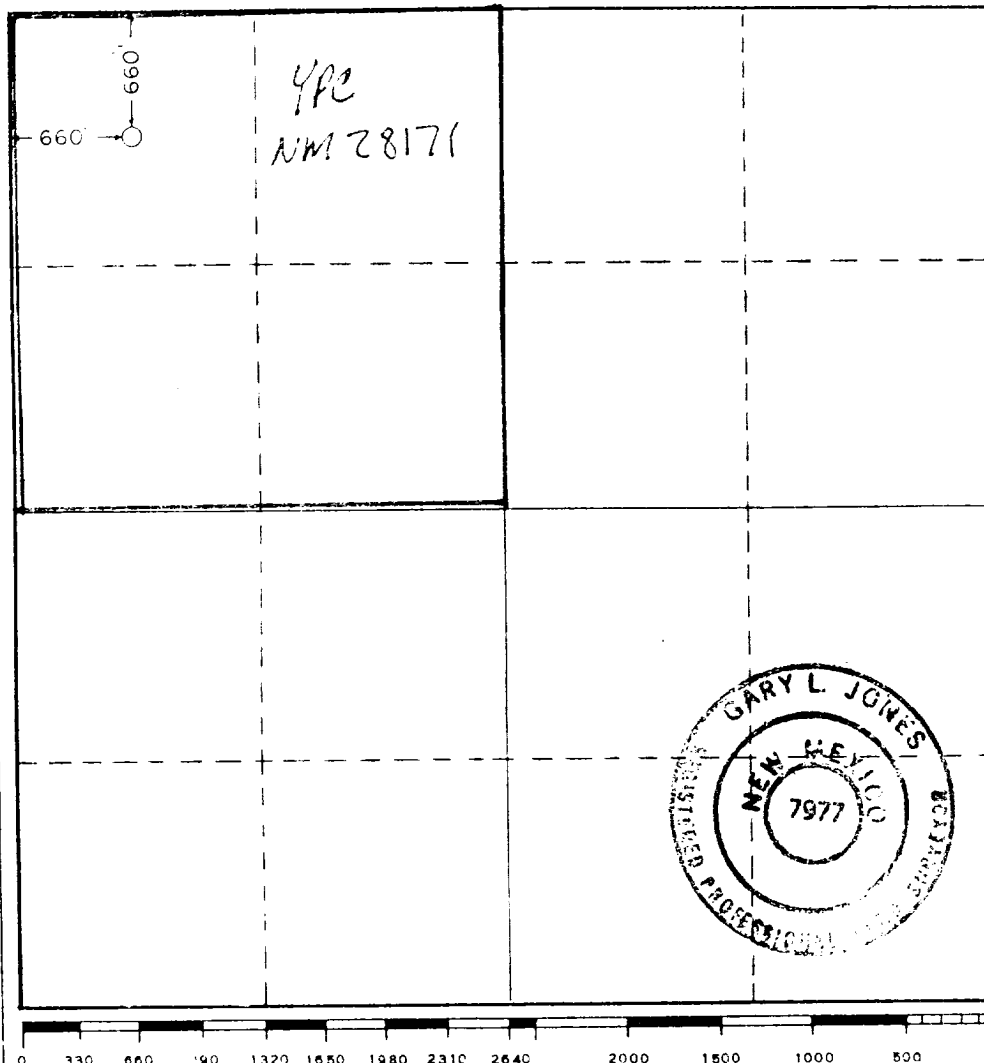
Operator YATES PETROLEUM CORPORATION			Lease Spear OA Federal		Well No. 2
Init Letter D	Section 15	Township 9 South	Range 26 East	County Chaves	
Actual Location of Well: <div style="display: flex; justify-content: space-between;"> 660 feet from the North line and 660 feet from the West line </div>					
Ground Level Elev. 3784.7	Producing Formation ABO		Pool Pecos Slope ABO	Dedicated Acreage: 160 Acres	

1. Outline the acreage dedicated to the subject well by colored pencil or hachure marks on the plat below.
2. If more than one lease is dedicated to the well, outline each and identify the ownership thereof (both as to working interest and royalty).
3. If more than one lease of different ownership is dedicated to the well, have the interests of all owners been consolidated by communitization, unitization, force-pooling, etc?

☐ Yes ☒ No If answer is "yes," type of consolidation _____

If answer is "no," list the owners and tract descriptions which have actually been consolidated. (Use reverse side of this form if necessary.) _____

No allowable will be assigned to the well until all interests have been consolidated (by communitization, unitization, forced-pooling, or otherwise) or until a non-standard unit, eliminating such interests, has been approved by the Commission.



CERTIFICATION

I hereby certify that the information contained herein is true and complete to the best of my knowledge and belief.

Cy Cowan

Name
Cy Cowan
Position

Regulatory Agent
Company
Yates Petroleum Corp

Date
3/23/83

I hereby certify that the well location shown on this plat was plotted from field notes of actual surveys made by me or under my supervision, and that the same is true and correct to the best of my knowledge and belief.

Date Surveyed
March 11, 1983

Registered Professional Engineer and/or Land Surveyor

Gary L Jones

Certificate No. **7977**

YATES PETROLEUM CORPORATION
Lease "OA" Federal #2
660' FNL and 660' FWL
Sec. 15-T9S-R26E

In conjunction with Form 9-331C, Application for Permit to Drill subject well, Yates Petroleum Corporation submits the following ten items of pertinent information in accordance with USGS requirements.

1. The geologic surface formation is sandy alluvium.

2. The estimated tops of geologic markers are as follows:

San Andres	979'
Glorieta	2084'
Fullerton	3533'
Abo	4357'
TD	5000'

3. The estimated depths at which anticipated water, oil or gas formations are expected to be encountered:

Water: 150' - 280'

Oil or Gas: 4375'

4. Proposed Casing Program: See Form 9-331C.

5. Pressure Control Equipment: See Form 9-331C and Exhibit B.

6. Mud Program: See Form 9-331C.

7. Auxiliary Equipment: Kelly Cock; pit level indicators and flow sensor equipment;
sub with full-opening valve on floor, drill pipe connection.

8. Testing, Logging and Coring Program:

Samples: Surface casing to TD.

BST's: As warranted.

Coring: None

Logging: CNL-FDC TD to csg w/GR-CNL to surface & DLL from TD to csg w/RxO

9. No abnormal pressures or temperatures are anticipated.

10. Anticipated starting date: As soon as possible after approval.



207 SOUTH FOURTH STREET
ARTESIA, NEW MEXICO 88210

TELEPHONE (505) 748-1331

S. P. YATES

PRESIDENT

MARTIN YATES, III

VICE PRESIDENT

JOHN A. YATES

VICE PRESIDENT

B. W. HARPER

SEC. TREAS.

MARCH 24, 1983

MR. GEORGE STEWART
MINERALS MANAGEMENT SERVICE
FEDERAL BUILDING
ROSWELL, NEW MEXICO 88201

RE: SPEAR "0A" FED #2

DEAR MR. STEWART,

YATES PETROLEUM CORPORATION HAS SUBMITTED AN APPLICATION TO DRILL A WELL ON SURFACE OWNED BY MOSS & MERIDETH, STAR ROUTE, MELROSE, NEW MEXICO. THIS WELL IS LOCATED IN SEC. 15 T4S-R26E, 660' FNL AND 660' FWL, CHAVES COUNTY, NEW MEXICO.

IN AN PHONE CONVERSATION WITH MRS. MERIDETH, IT WAS AGREED THAT WE WOULD COMPENSATE HIM MONETARILY FOR THE SURFACE DAMAGES INCURRED. AFTER DRILLING HAS BEEN COMPLETED, THE PIT AREA WILL BE LEVELED AFTER IT IS DRY AND ALONG WITH THE PAD WILL BE LEFT TO RESEED NATURALLY.

SINCERELY,

CY COWAN
REGULATORY AGENT
YATES PETROLEUM CORPORATION

CC/DW

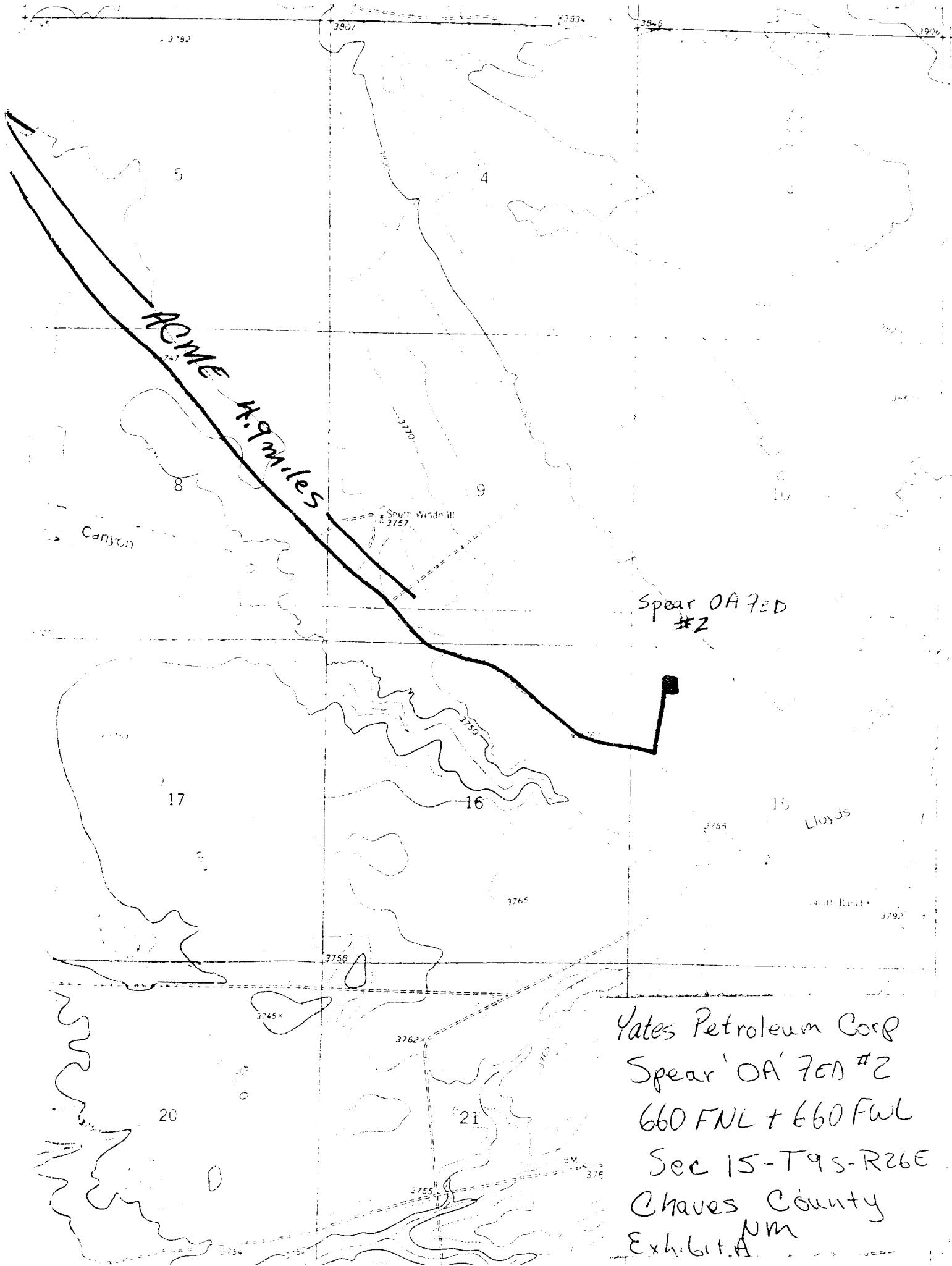
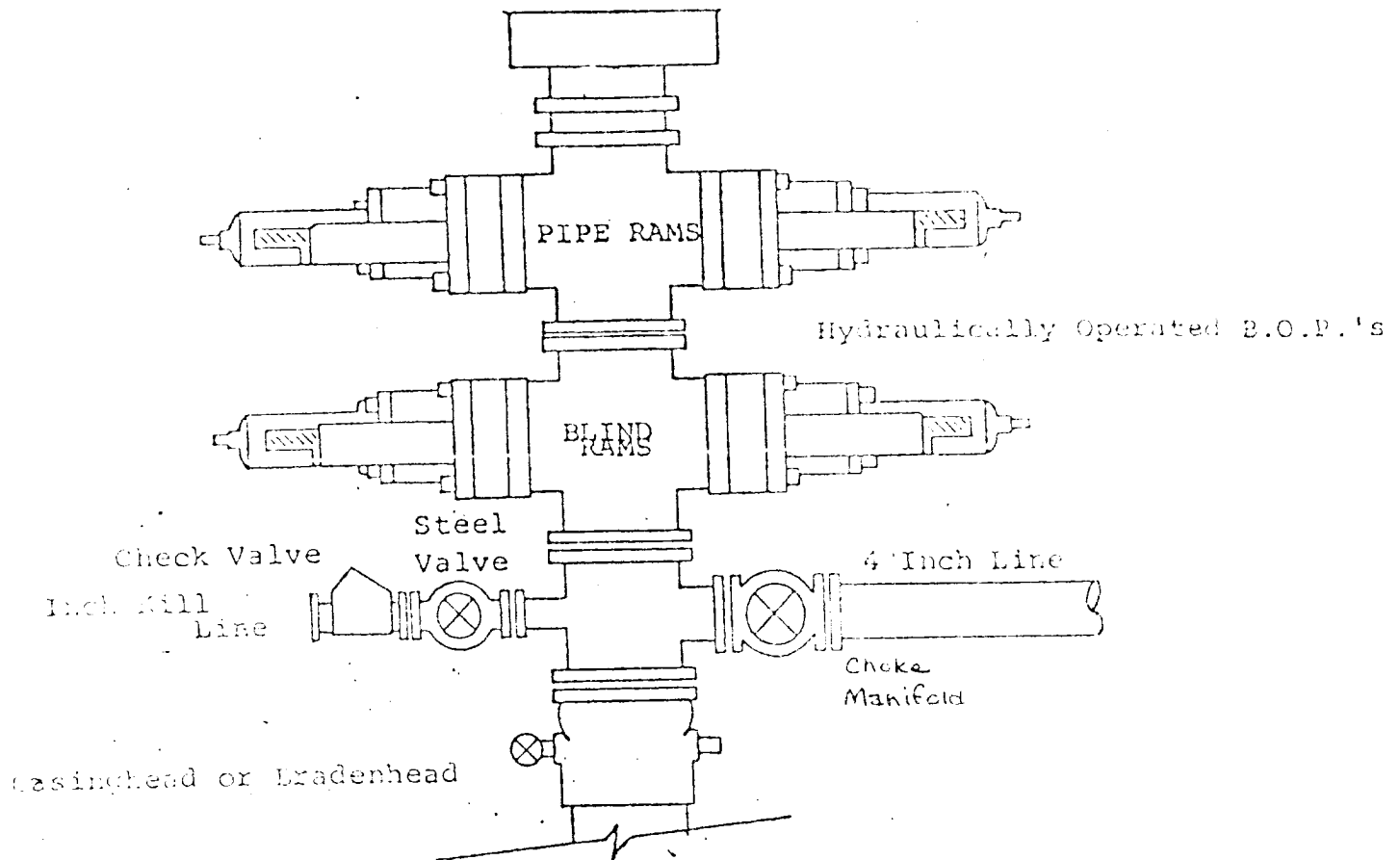


EXHIBIT B

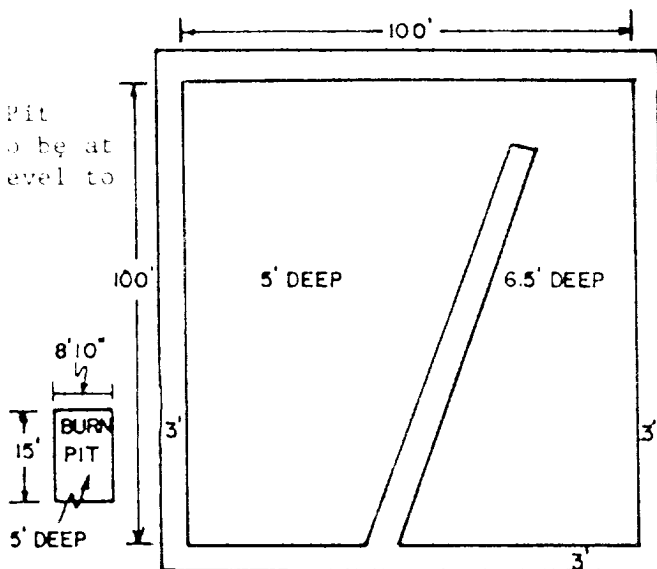
BDP DIAGRAM



YATES PETROLEUM CORP.

Exhibit C

Reserve Pit
bottom to be at
ground level to
1 ft.



NOTE:

Inside walls must be as
high and wide as outer
walls of pit.

