

UNITED STATES
DEPARTMENT OF THE INTERIOR

GEOLOGICAL SURVEY

NM OIL CONS. COMMISSION
Artesia, NM 88210

5. LEASE DESIGNATION AND SERIAL NO.

NM-18209

6. IF INDIAN, ALLOTTEE OR TRIBE NAME

7. UNIT AGREEMENT NAME

8. FARM OR LEASE NAME

9. WELL NO. Mildred "XD" Fed.

10. FIELD AND POOL, OR WILDCAT

11. SEC., T., R., S., OR B.L.K.
AND SURVEY OR AREA
Pecos Slope Abo12. COUNTY OR PARISH 13. STATE
Sec. 33, T7S, R23E

CHAVES

NM

12. TYPE OF WORK

DRILL ☒DEEPEN ☐PLUG BACK ☐

b. TYPE OF WELL

OIL
WELL ☐GAS
WELL ☒

OTHER

SINGLE
ZONE ☐MULTIPLE
ZONE ☐

2. NAME OF OPERATOR

Yates Petroleum Corporation

3. ADDRESS OF OPERATOR

207 S. 4th Street, Artesia, New Mexico 88210

4. LOCATION OF WELL (Report location clearly and in accordance with any State requirements.)

At surface

330' FNL & 330' FEL

At proposed prod. zone

Same

14. DISTANCE IN MILES AND DIRECTION FROM NEAREST TOWN OR POST OFFICE

Approx. 22 NW of Roswell, NM

15. DISTANCE FROM PROPOSED*

LOCATION TO NEAREST
PROPERTY OR LEASE LINE, FT.
(Also to nearest drlg. unit line, if any)

660'

16. NO. OF ACRES IN LEASE

1920

18. DISTANCE FROM PROPOSED LOCATION*

TO NEAREST WELL, DRILLING, COMPLETED,
OR ABANDONED, ON THIS LEASE, FT.

1400'

19. PROPOSED DEPTH

3450

17. NO. OF ACRES ASSIGNED
TO THIS WELL

160

20. ROTARY OR CABLE TOOLS

Rotary

21. ELEVATIONS (Show whether DE, RT, GR, etc.)

3835.1 GL

22. APPROX. DATE WORK WILL START

ASAP

23. PROPOSED CASING AND CEMENTING PROGRAM

SIZE OF HOLE	SIZE OF CASING	WEIGHT PER FOOT	SETTING DEPTH	QUANTITY OF CEMENT
14 3/4	10 3/4	40.5 #J-55	1100	800 Circ
7 7/8	4 1/2	9.5 #	TD	350

We propose to drill and test the Abo and intermediate formations. Approximately 1100 of surface casing will be set and cement circulated to shut off gravel and caving. If needed (lost circulation) 8 5/8 intermediate casing will be run to 1500' and cemented with enough cement calculated to tie back into the surface casing. Temperature survey will be run to determine cement top. If commercial, production casing will be run and cemented with adequate cover, perforate, and stimulate as needed for production.

MUD PROGRAM: FW Gel & LCM to 1100' Brine to 3200', Brine & KCL Water to TDBOP PROGRAM: BOP's will be installed at the offset and tested daily.

GAS NOT DEDICATED.

IN ABOVE SPACE DESCRIBE PROPOSED PROGRAM: If proposal is to deepen or plug back, give data on present productive zone and proposed new productive zone. If proposal is to drill or deepen directionally, give pertinent data on subsurface locations and measured and true vertical depths. Give blowout preventer program, if any.

24.

SIGNED

*Cy Cowen*TITLE Regulatory AgentDATE March 16, 1983

(This space for Federal or State office use)

PERMIT NO.

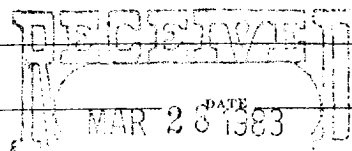
APPROVED

APPROVAL DATE

APPROVED BY

CONDITIONS OF APPROVAL, IF ANY

APR 11 1983

James A. Gillham
Acting District ManagerAPPROVAL SUBJECT TO
GENERAL REQUIREMENTS AND
SPECIAL STIPULATIONS
ATTACHEDOIL & GAS
U.S. GEOLOGICAL SURVEY
ROSWELL, NEW MEXICO*Subject To NMOCDA Approval For NSL*

**NEW MEXICO OIL CONSERVATION COMMISSION
WELL LOCATION AND ACREAGE DEDICATION PLAT**

Form C-102
Supersedes C-128
Effective 1-1-65

All distances must be from the outer boundaries of the Section.

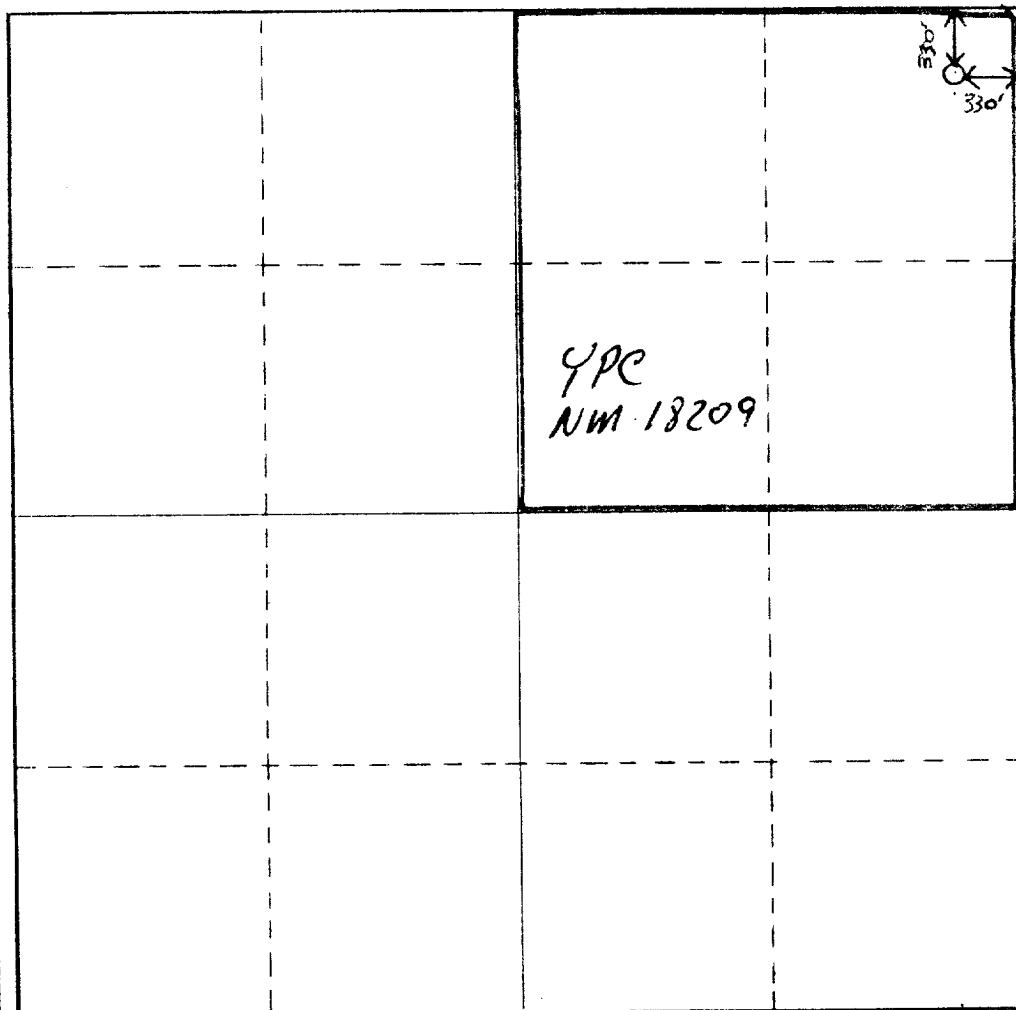
Operator YATES PETROLEUM CORPORATION			Lease Mildred "XD" Federal		Well No. 1
Unit Letter A	Section 33	Township 7 South	Range 23 East	County Chaves	
Actual Footage Location of Well: 330 feet from the North line and 330 feet from the East line					
Ground Level Elev. 3835.1' GL	Producing Formation ABO		Pool Pecos Slope ABO	Dedicated Acreage: 160 Acres	

1. Outline the acreage dedicated to the subject well by colored pencil or hachure marks on the plat below.
2. If more than one lease is dedicated to the well, outline each and identify the ownership thereof (both as to working interest and royalty).
3. If more than one lease of different ownership is dedicated to the well, have the interests of all owners been consolidated by communitization, unitization, force-pooling, etc?

☐ Yes ☒ No If answer is "yes," type of consolidation _____

If answer is "no," list the owners and tract descriptions which have actually been consolidated. (Use reverse side of this form if necessary.) _____

No allowable will be assigned to the well until all interests have been consolidated (by communitization, unitization, forced-pooling, or otherwise) or until a non-standard unit, eliminating such interests, has been approved by the Commission.



CERTIFICATION

I hereby certify that the information contained herein is true and complete to the best of my knowledge and belief.

Cy Cowan

Name

Cy Cowan

Position

Regulatory Agent

Company

Yates Petroleum Corp.

Date

3/24/83

I hereby certify that the well location shown on this plat was plotted from field notes of actual surveys made by me or under my supervision, and that the same is true and correct to the best of my knowledge and belief.

Date Surveyed

March 22, 1983

Registered Professional Engineer and/or Land Surveyor

Certificate No. **7977**

0 330 660 990 1320 1650 1980 2310 2640 2970 3300 3630 3960 4290 4620 4950 5280 5610 5940 6270 6600

YATES PETROLEUM CORPORATION

Mildred XD Fed. #1330 FNL & 330 FELSec. 33, T7S, R23E

In conjunction with Form 9-331C, Application for Permit to Drill subject well, Yates Petroleum Corporation submits the following ten items of pertinent information in accordance with USGS requirements.

1. The geologic surface formation is Sandy Alluvium.
2. The estimated tops of geologic markers are as follows:

SA	
Glo	1050'
Full	2120'
Abo	2720'
TD	3450'

3. The estimated depths at which anticipated water, oil or gas formations are expected to be encountered:

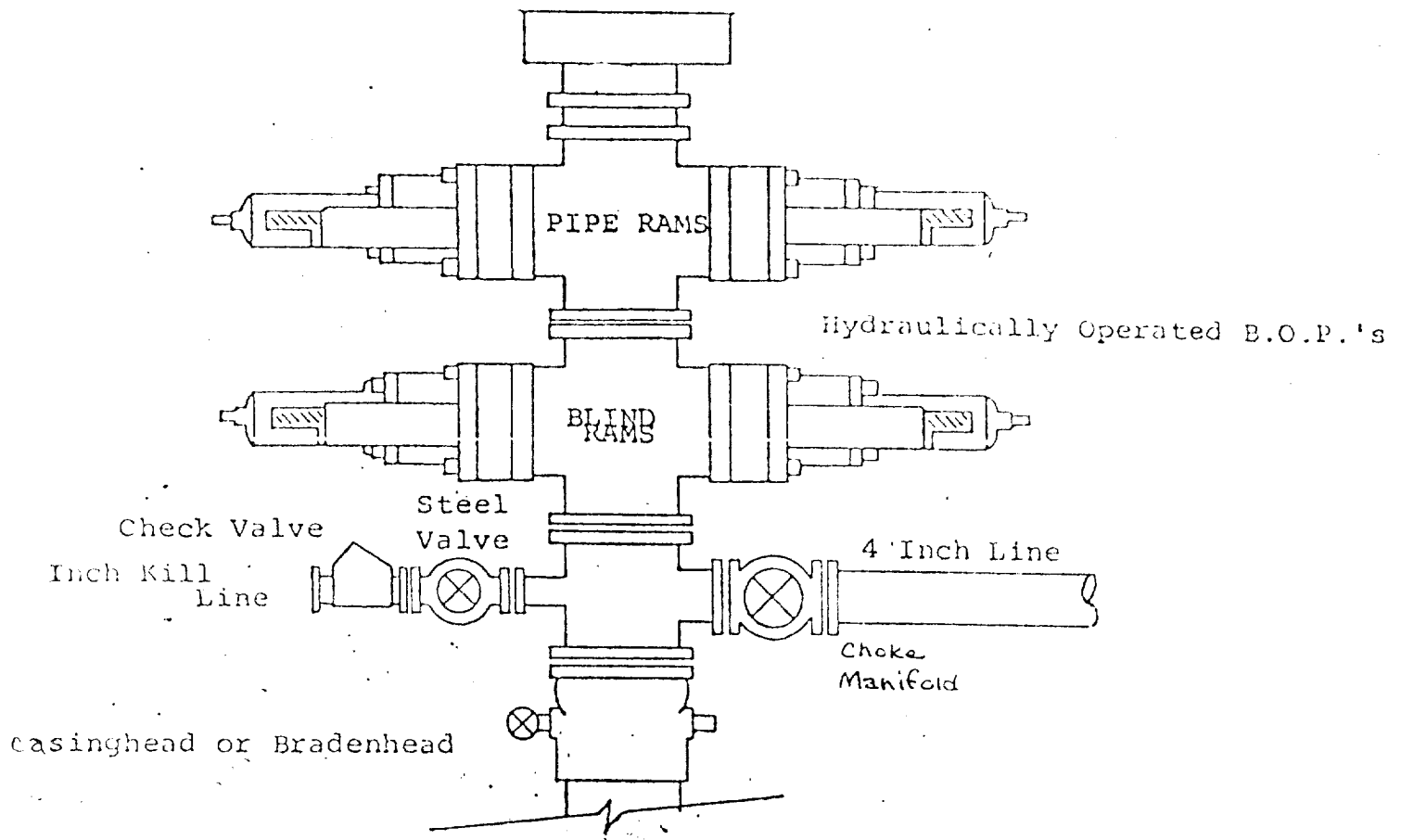
Water: 750'-1200'

Oil or Gas: 2750'

4. Proposed Casing Program: See Form 9-331C.
5. Pressure Control Equipment: See Form 9-331C and Exhibit B.
6. Mud Program: See Form 9-331C.
7. Auxiliary Equipment: Kelly Cock; pit level indicators and flow sensor equipment; sub with full-opening valve on floor, drill pipe connection.
8. Testing, Logging and Coring Program:
Samples: Surf Casing to TD
DST's: As Warrented
Coring: None
Logging: CNL-FDC TD to CSG w/GR-CNL to Surf, DLL from TD to CSG
9. No abnormal pressures or temperatures are anticipated.
10. Anticipated starting date: As soon as possible after approval.

EXHIBIT B

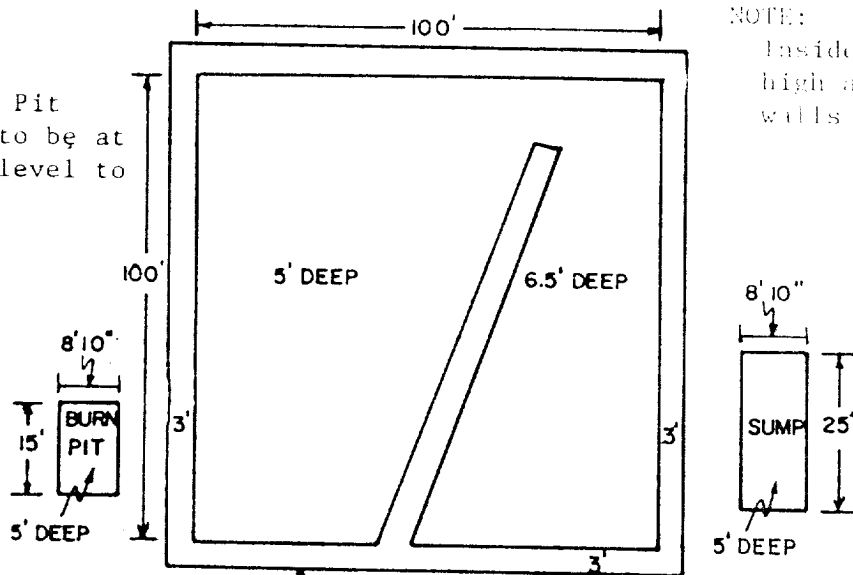
BOP DIAGRAM



YATES PETROLEUM CORP.

Exhibit C

Reserve Pit
bottom to be at
ground level to
1 ft.



NOTE:

Inside walls must be as
high and wide as outer
walls of pit.

