

UNITED STATES
DEPARTMENT OF THE INTERIOR
GEOLOGICAL SURVEY

30-005-61985
5. LEASE DESIGNATION AND SERIAL NO.

NM-2359

6. IF INDIAN, ALLOTTEE OR TRIBE NAME

7. UNIT AGREEMENT NAME

8. FARM OR LEASE NAME

Sorenson "IB" Federal

9. WELL NO.

3

10. FIELD AND POOL, OR WILDCAT

Pecos Slope Abo

11. SEC., T., R., M., OR BLK.
AND SURVEY OR AREA

Sec. 6-T7S-R26E

12. COUNTY OR PARISH 13. STATE

Chaves

NM

APPLICATION FOR PERMIT TO DRILL, DEEPEN, OR PLUG BACK

1a. TYPE OF WORK

DRILL ☒

DEEPEN ☐

PLUG BACK ☐

b. TYPE OF WELL

OIL
WELL ☐

GAS
WELL ☒

OTHER

SINGLE
ZONE ☐

MULTIPLE
ZONE ☐

2. NAME OF OPERATOR

Yates Petroleum Corporation

3. ADDRESS OF OPERATOR

207 S. 4th, Artesia, New Mexico

4. LOCATION OF WELL (Report location clearly and in accordance with any State requirements.)

At surface 1980' FSL and 1980' FWL

At proposed prod. zone
same

14. DISTANCE IN MILES AND DIRECTION FROM NEAREST TOWN OR POST OFFICE*

Approximately 30 miles NE of Roswell, NM.

15. DISTANCE FROM PROPOSED*

LOCATION TO NEAREST
PROPERTY OR LEASE LINE, FT.
(Also to nearest drig. unit line, if any)

1980'

16. NO. OF ACRES IN LEASE

604'

18. DISTANCE FROM PROPOSED LOCATION*

TO NEAREST WELL, DRILLING, COMPLETED,
OR APPLIED FOR, ON THIS LEASE, FT.

1/2 mile

19. PROPOSED DEPTH

4200

17. NO. OF ACRES ASSIGNED
TO THIS WELL

160

20. ROTARY OR CABLE TOOLS

Rotary

21. ELEVATIONS (Show whether DF, RT, GR, etc.)

3655.9' GL

22. APPROX. DATE WORK WILL START*

ASAP

23. PROPOSED CASING AND CEMENTING PROGRAM

| SIZE OF HOLE | SIZE OF CASING | WEIGHT PER FOOT | SETTING DEPTH | QUANTITY OF CEMENT |
|--------------|----------------|-----------------|---------------|--------------------|
| 14 3/4" | 10 3/4" | 40.5# J-55 | 880' | 750 sx circulated |
| 7 7/8" | 4 1/2" | 9.5# J-55 | TD | 350 sx |

We propose to drill and test the Abo and intermediate formations. Approximately 880' of surface casing will be set and cement circulated to shut off gravel and caving. If needed (lost circulation) 8 5/8" intermediate casing will be run to 1500' and cemented with enough cement calculated to tie back into the surface casing. If commercial, production casing will be run and cemented with adequate cover, perforated and stimulated as needed for production.

MUD PROGRAM: FW gel/LCM to 880', Brine to 3200', Brine/KCL water to TD.

BOP PROGRAM: BOP's will be installed at the offset and tested daily.

GAS NOT DEDICATED.

IN ABOVE SPACE DESCRIBE PROPOSED PROGRAM: If proposal is to deepen or plug back, give data on present productive zone and proposed new productive zone. If proposal is to drill or deepen directionally, give pertinent data on subsurface locations and measured and true vertical depths. Give blowout preventer program, if any.

24.

SIGNED

Cy Cowen

TITLE Regulatory Agent

DATE 4/6/83

(This space for Federal or State office use)

PERMIT NO.

APPROVED

APPROVAL DATE

APPROVED BY

A. P. Lopez
APR 19 1983

TITLE

RECEIVED
APR 6 1983

APPROVAL SUBJECT TO
GENERAL REQUIREMENTS AND
SPECIAL STIPULATIONS
ATTACHED

OIL & GAS
U.S. GEOLOGICAL SURVEY
ROSWELL, NEW MEXICO

**NEW MEXICO OIL CONSERVATION COMMISSION
WELL LOCATION AND ACREAGE DEDICATION PLAT**

Form C-102
Supersedes C-128
Effective 1-1-65

All distances must be from the outer boundaries of the Section.

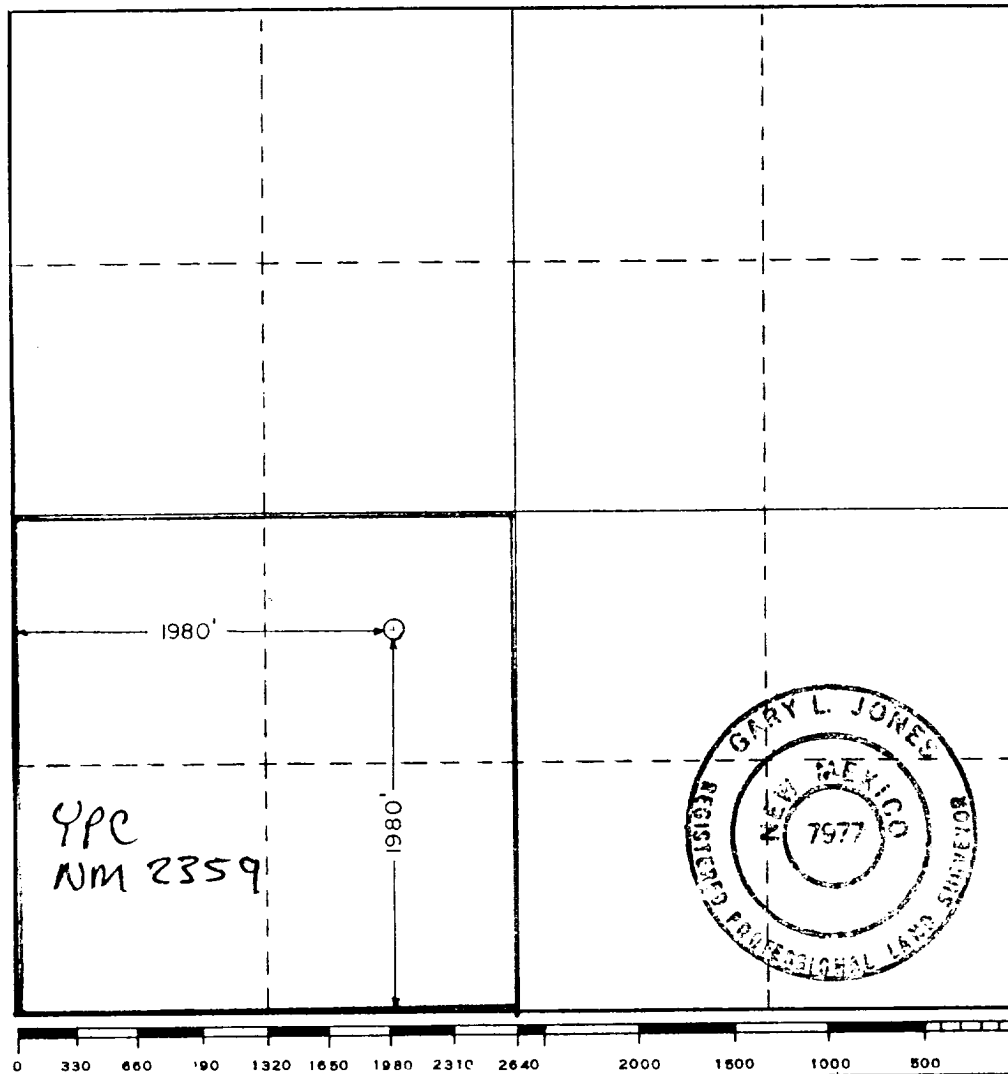
| | | | | | |
|--|-----------------------------------|--------------------------------|--|-------------------------|----------------------|
| Operator YATES PETROLEUM CORPORATION | | | Lease Sorenson IB Federal | | Well No. 3 |
| Unit Letter K | Section 6 | Township 7 South | Range 26 East | County Chaves | |
| Actual Location of Well: <div style="display: flex; justify-content: space-between;"> 1980 feet from the South line and 1980 feet from the West line </div> | | | | | |
| Ground Level Elev. 3655.9 | Producing Formation ABO | Pool Pecos Slope ABO | Dedicated Acreage: 160 Acres | | |

1. Outline the acreage dedicated to the subject well by colored pencil or hatchure marks on the plat below.
2. If more than one lease is dedicated to the well, outline each and identify the ownership thereof (both as to working interest and royalty).
3. If more than one lease of different ownership is dedicated to the well, have the interests of all owners been consolidated by communitization, unitization, force-pooling, etc?

☐ Yes ☒ No If answer is "yes," type of consolidation _____

If answer is "no," list the owners and tract descriptions which have actually been consolidated. (Use reverse side of this form if necessary.) _____

No allowable will be assigned to the well until all interests have been consolidated (by communitization, unitization, forced-pooling, or otherwise) or until a non-standard unit, eliminating such interests, has been approved by the Commission.



CERTIFICATION

I hereby certify that the information contained herein is true and complete to the best of my knowledge and belief.

Cy Cowan

Name

Cy Cowan

Position

Regulatory Agent

Company

Yates Petroleum Corp

Date

4/6/83

I hereby certify that the well location shown on this plat was plotted from field notes of actual surveys made by me or under my supervision, and that the same is true and correct to the best of my knowledge and belief.

Date Surveyed

March 30, 1983

Registered Professional Engineer and/or Land Surveyor

Certificate No.

7977

YATES PETROLEUM CORPORATION
Sorenson "IB" Federal #3
1980' FSL and 1980' FWL
Sec. 6-T7S-R26E

In conjunction with Form 9-331C, Application for Permit to Drill subject well, Yates Petroleum Corporation submits the following ten items of pertinent information in accordance with USGS requirements.

1. The geologic surface formation is sandy alluvium.
2. The estimated tops of geologic markers are as follows:

| | |
|------------|-------|
| San Andres | 434' |
| Glorieta | 1522' |
| Fullerton | 2941' |
| Abo | 3533' |
| TD | 4200' |
3. The estimated depths at which anticipated water, oil or gas formations are expected to be encountered:

Water: Approximately 250'-350'

Oil or Gas: Abo 3558'
4. Proposed Casing Program: See Form 9-331C.
5. Pressure Control Equipment: See Form 9-331C.
6. Mud Program: See Form 9-331C.
7. Auxiliary Equipment: Kelly Cock; pit level indicators and flow sensor equipment; sub with full-opening valve on floor, drill pipe connection.
8. Testing, Logging and Coring Program:

Samples: *Surface Csg to TD*
DST's: *AS WARRANTED*
Coring: *NONE*
Logging: *ONL - 7' TO TD TO Csg w/ 9" - ONL to Surface, DCL from TD to Csg.*
9. No abnormal pressures or temperatures are anticipated.
10. Anticipated starting date: As soon as possible after approval.

Cottonwood Ranch

Drill Hole

Fivemile

RIVER

Potter Corral 2mi

Sorenson
IB 7ED #3

Yates Petroleum Corp
Sorenson IB 7ED #3
1980' FSL + 1980 FWL
Sec 6 T-7S-R26E
Chaves County
NM
Exhibit A

BEARD RR #2

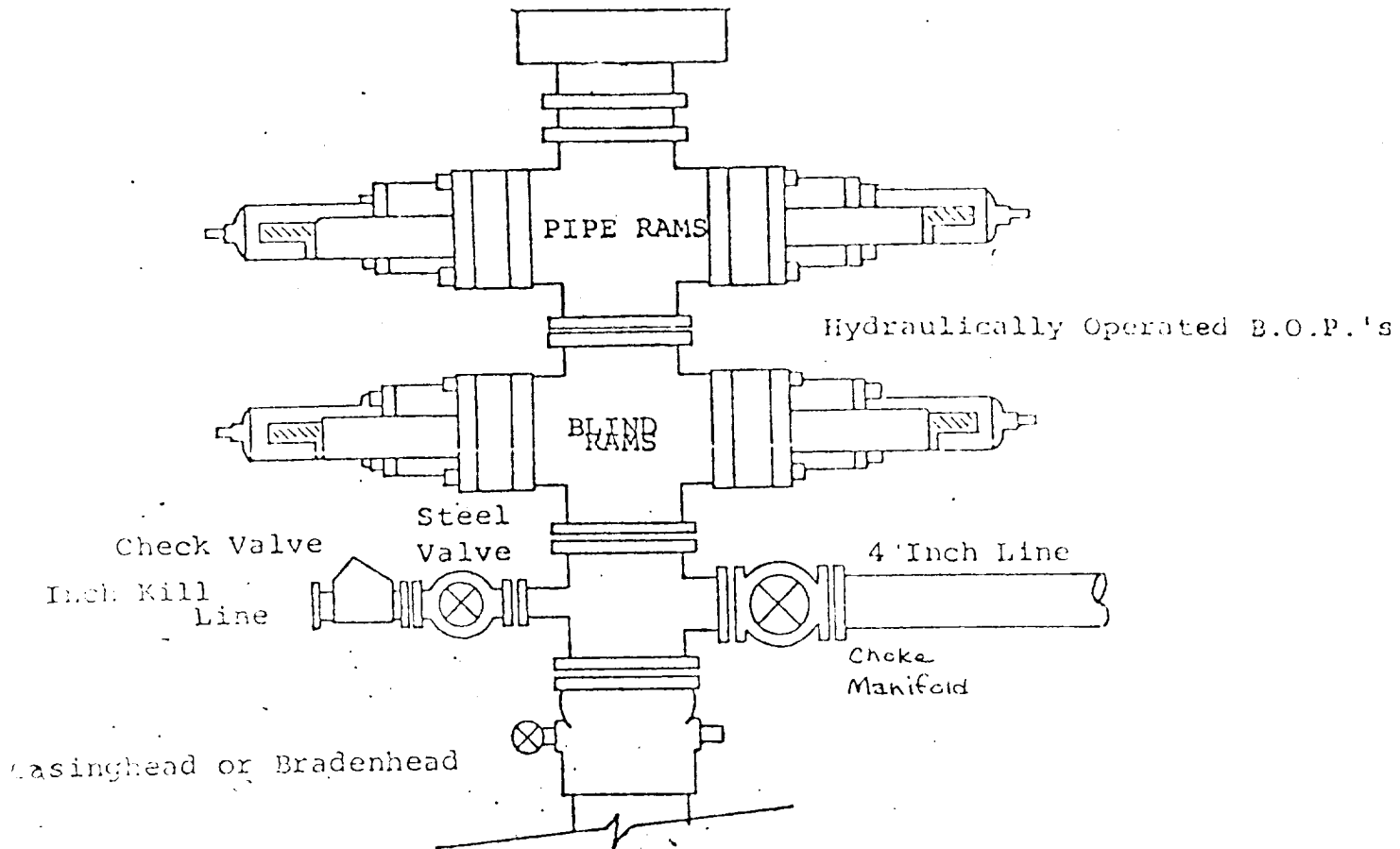
SHELL
CORRAL
UNIT A

BEARD RR

LERMAN #1
OC FED

EXHIBIT B

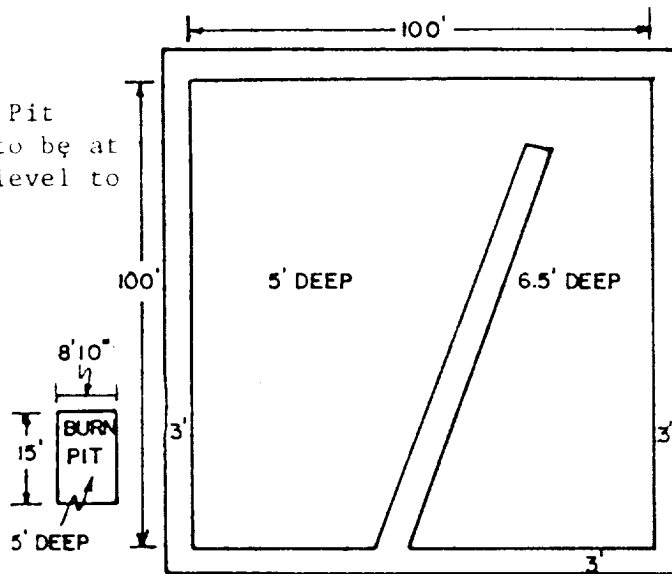
BDP DIAGRAM



YATES PETROLEUM CORP.

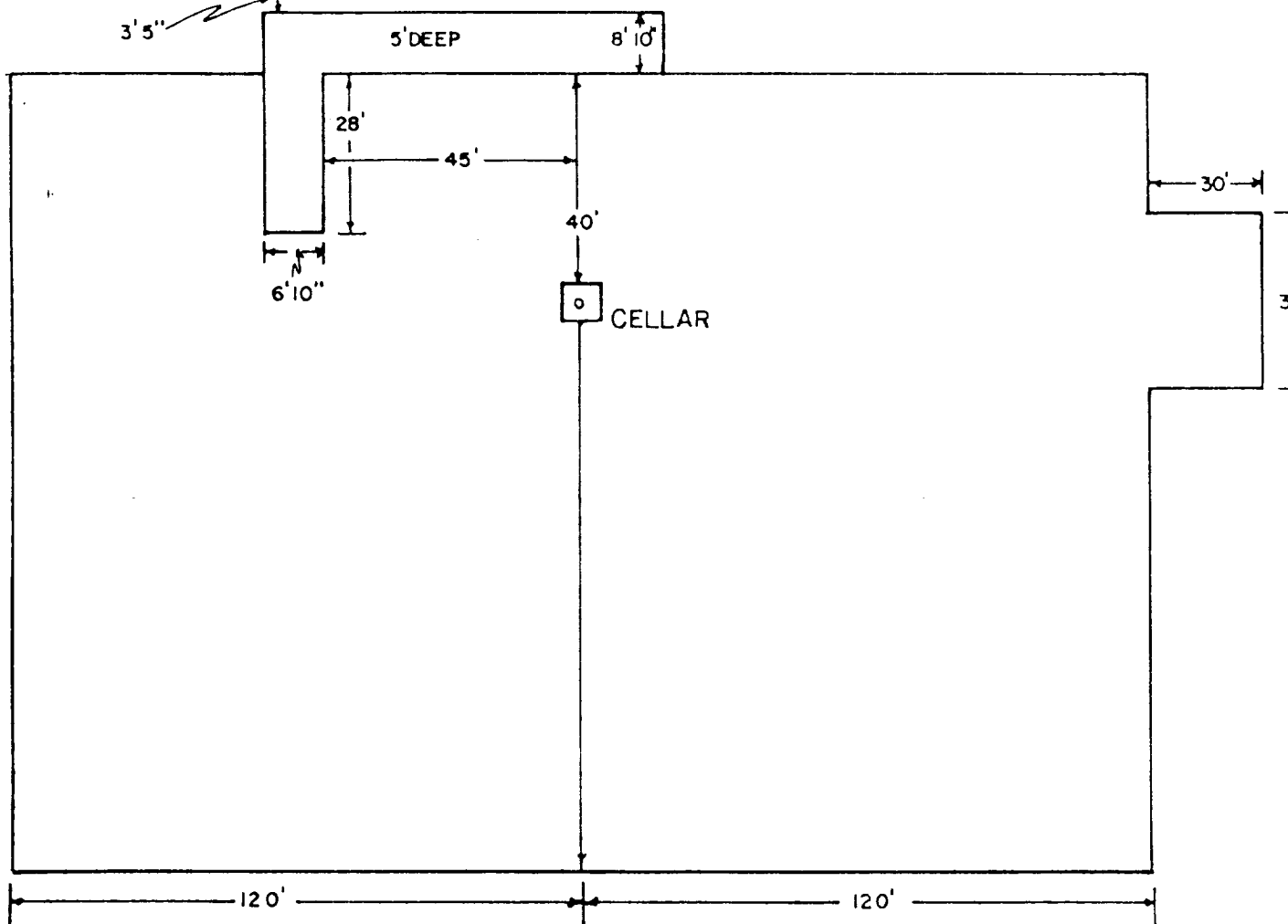
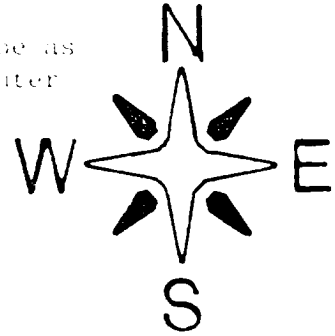
Exhibit C

Reserve Pit
bottom to be at
ground level to
1 ft.



NOTE:

Inside walls must be as
high and wide as outer
walls of pit.





207 SOUTH FOURTH STREET
ARTESIA, NEW MEXICO 88210
TELEPHONE (505) 748-1331

S. P. YATES
PRESIDENT
MARTIN YATES, III
VICE PRESIDENT
JOHN A. YATES
VICE PRESIDENT
B. W. HARPER
SEC. TREAS.

April 6, 1983

Mr. George Stewart
Minerals Management Service
Federal Building
Roswell, New Mexico 88201

Re: Sorenson "IB" Federal #3

Dear Mr. Stewart,

Yates Petroleum Corporation has submitted an application to drill a well on surface owned by Tom Cooper of the Cottonwood Ranch, Roswell, New Mexico. This well is located in Sec. 6 T7S-R26E, 1980' FSL and 1980' FWL, Chaves County, New Mexico.

In an on-site visit with Mr. Steve Thompson, it was agreed that we would compensate him monetarily for the surface damages incurred. After drilling has been completed, the pit area will be leveled after it is dry and along with the pad will be left to reseed naturally.

Sincerely,

Cy Cowan
Regulatory Agent
YATES PETROLEUM CORPORATION

CC/dw