

NO. OF COPIES RECEIVED	
DISTRIBUTION	
SANTA FE	<input checked="" type="checkbox"/>
FILE	<input checked="" type="checkbox"/>
U.S.G.S.	<input checked="" type="checkbox"/>
LAND OFFICE	<input checked="" type="checkbox"/>
OPERATOR	<input checked="" type="checkbox"/>

5A. Indicate Type of Lease STATE <input type="checkbox"/> FEDERAL <input checked="" type="checkbox"/>
5. State Oil & Gas Lease No.
7. Unit Agreement Name
8. Farm or Lease Name BRITT M
9. Well No. #2
10. Field and Pool, or Wildcat Wildcat Handa San Andres
12. County Chaves

APPLICATION FOR PERMIT TO DRILL, DEEPEN, OR PLUG BACK

a. Type of Work
DRILL ☒ DEEPEN ☐ PLUG BACK ☐

b. Type of Well
OIL WELL ☒ GAS WELL ☐ OTHER ☐ SINGLE ZONE ☒ MULTIPLE ZONE ☐

Name of Operator
Wallace Oil & Gas, Inc. ✓

Address of Operator
50 Penn Place, Suite 850, Okla. City, OK 73118

Location of Well
UNIT LETTER M LOCATED 330 FEET FROM THE South LINE
NO 990 FEET FROM THE West LINE OF SEC. 3 TWP. 11S RGE. 25E NMPM

1. Elevations (Show whether DF, KT, etc.) 3465'	21A. Kind & Status Plug. Bond One-Well Plugging	21B. Drilling Contractor Artesia Fishing Tool Co.	22. Approx. Date Work will start 4/25/83
--	--	--	---

PROPOSED CASING AND CEMENT PROGRAM

SIZE OF HOLE	SIZE OF CASING	WEIGHT PER FOOT	SETTING DEPTH	SACKS OF CEMENT	EST. TOP
12 1/4"	8 5/8"	24#	350'	320	Surface
7 7/8"	4 1/2"	10.5#	1000'	250	500'

Proposed to drill approximately 1000' to test San Andres formation.
If productive, Casing will be set and Completion attempted.

Estimated Top: San Andres 687'

Mud Program: to drill with mud, Vis. 30 to 35 at 55' above San Andres, mud up, get water loss down, drill to T.D.

BOP Program: BOP will be installed on 8 5/8" casing, and will be tested daily.

Post FD-1
4-29-83
New Dec + API

APPROVAL VALID FOR 180 DAYS
PERMIT EXPIRES 10-25-83
UNLESS DRILLING UNDERWAY

*BOP(Attachment)

ABOVE SPACE DESCRIBE PROPOSED PROGRAM: IF PROPOSAL IS TO DEEPEN OR PLUG BACK, GIVE DATA ON PRESENT PRODUCTIVE ZONE AND PROPOSED NEW PRODUCTION ZONE. GIVE BLOWOUT PREVENTER PROGRAM, IF ANY.

I hereby certify that the information above is true and complete to the best of my knowledge and belief.

Signed Charles S. Smith Title Production Sec. Date April 20, 1983

(This space for State Use)

PROVED BY M. Williams TITLE OIL AND GAS INSPECTOR DATE APR 25 1983

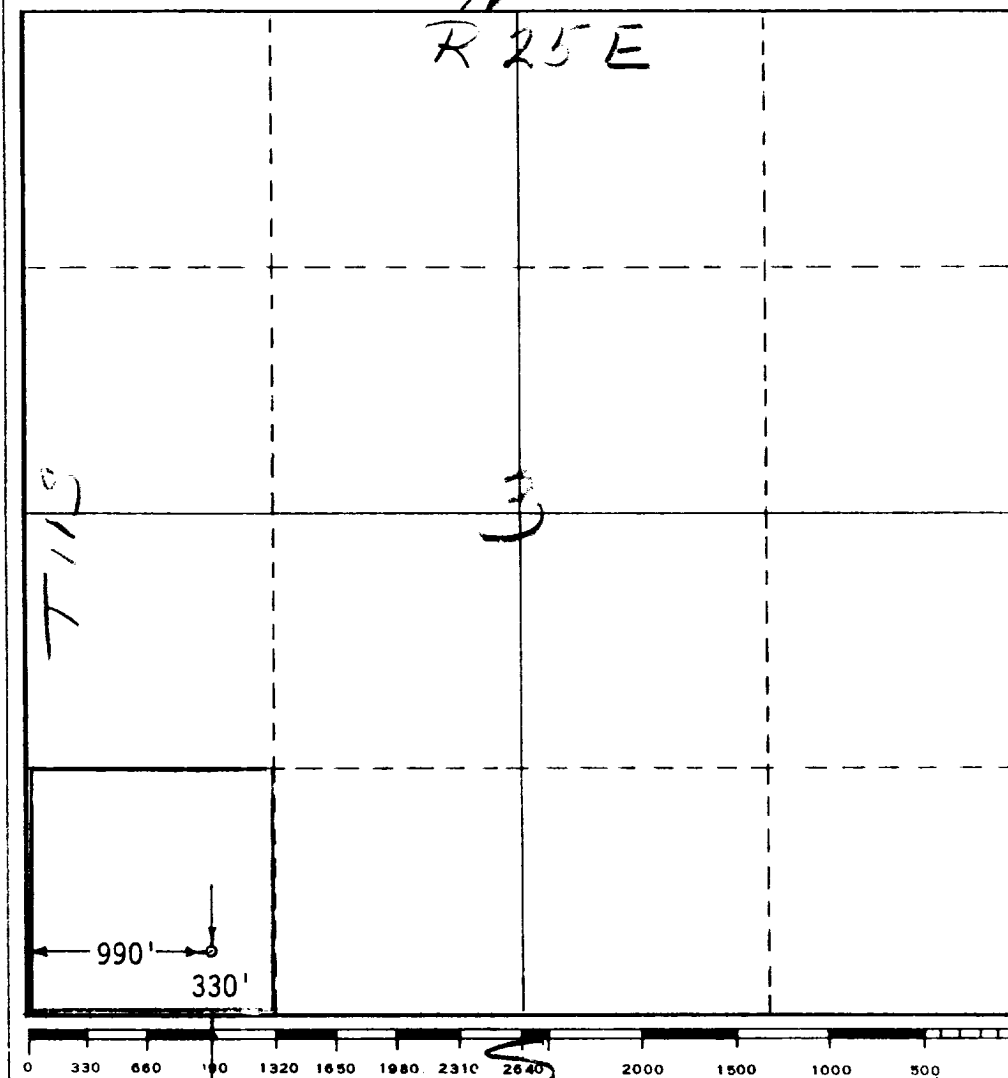
CONDITIONS OF APPROVAL, IF ANY:

Set back 100 feet from
time to witness casing
the 8 5/8" casing

Form C-102
Supersedes C-128
Effective 1-1-65

Operator WALLACE OIL & GAS		Lease Britt M		Well No. # 2	
Unit Letter M	Section 3	Township 11-S	Range 25-E	County Chaves	
Actual Footage Location of Well:					
330' feet from the South		line and 990'		feet from the West line SW/4	
Ground Level Elev. 3465'	Producing Formation San Andres	Pool H-1-Pool		Dedicated Acreage: 40 Acres	

- No allowable will be assigned to the well until all interests have been consolidated (by communitization, unitization, forced-pooling, or otherwise) or until a non-standard unit, eliminating such interests, has been approved by the Commission.



Gary D. Baswell

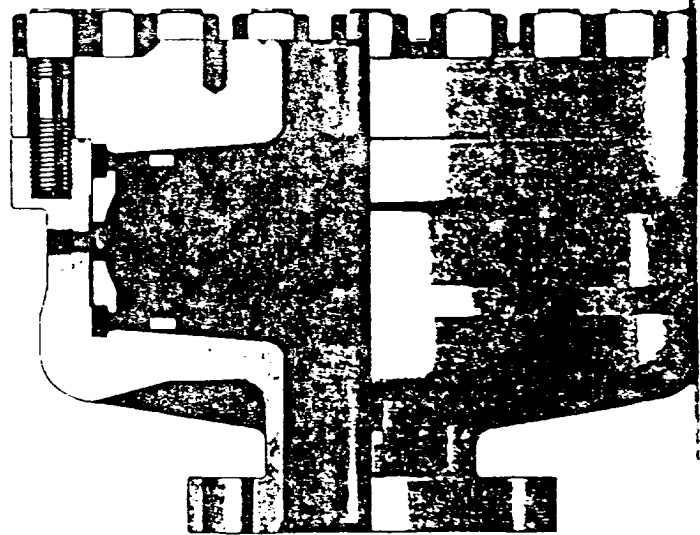
6689

REGAN BLOWOUT PREVENTERS

The Regan Torus Blowout Preventer is used primarily on production and workover rigs for well control up to 3000 PSI working pressure

DESIGN FEATURES

- The Torus Preventer is designed for minimum height to facilitate its use with production and workover rigs.
- The rubber packer will conform to any object in the well bore. Sealing ability is not affected by minor damage to the inner bore.
- The packer will seal on open hole at full working pressure.
- The dual packer design increases the reliability of the preventer since the outer rubber is never exposed to the well bore. Under ordinary service, the outer packer is rarely replaced.



TORUS BLOWOUT PREVENTER
PATENTED

SPECIFICATIONS

Nominal Size	Test Pressure (psi)	DIMENSIONS (in.)			Weight (lb.)	End Flanges (I)	R/RX Ring Grooves	Side Outlet	Notes
		Outside Diameter	Thru Bore	Overall Height					
6	1500 1600	27 28 1/2	21 1/4 21 1/2	19 1/4 21 1/4	1360 1350	nom 6 nom 6	45 45	None 2" L.P.	a) Bottom flange holes for use with either 2000 psi API-6B flange or used with obsolete 5000 psi API-6B flange; Top flange studded for 3000 psi flange unless otherwise specified.
8	3000	34 1/2	9	25	2675	nom 8	45	None	