

UNITED STATES  
DEPARTMENT OF THE INTERIOR  
GEOLOGICAL SURVEY

## APPLICATION FOR PERMIT TO DRILL, DEEPEN, OR PLUG BACK

## 1a. TYPE OF WORK

DRILL ☒DEEPEN ☐PLUG BACK ☐

## b. TYPE OF WELL

OIL  
WELL ☒GAS  
WELL ☐OTHER ☐

## 2. NAME OF OPERATOR

STEVENS OPERATING CORPORATION

O. C. D.

## 3. ADDRESS OF OPERATOR

P. O. Box 2408, Roswell, New Mexico 88201

## 4. LOCATION OF WELL (Report location clearly and in accordance with any State requirements.)\*

At surface 1980 FNL 660 FEL, Sec. 18, T-7-S, R-27-E

At proposed prod. zone Same

## 14. DISTANCE IN MILES AND DIRECTION FROM NEAREST TOWN OR POST OFFICE\*

32.0 northeast of Roswell, New Mexico

## 15. DISTANCE FROM PROPOSED\*

LOCATION TO NEAREST  
PROPERTY OR LEASE LINE, FT.  
(Also to nearest drlg. unit line, if any)

N/A

## 16. NO. OF ACRES IN LEASE

400

17. NO. OF ACRES ASSIGNED  
TO THIS WELL

400

## 18. DISTANCE FROM PROPOSED LOCATION\*

TO NEAREST WELL, DRILLING, COMPLETED,  
OR APPLIED FOR, ON THIS LEASE, FT.

N/A

## 19. PROPOSED DEPTH

2000'

## 20. ROTARY OR CABLE TOOLS

Rotary

## 21. ELEVATIONS (Show whether DF, RT, GR, etc.)

3942.5 GR

## 23.

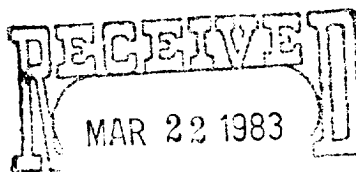
## PROPOSED CASING AND CEMENTING PROGRAM

SIZE OF HOLE	SIZE OF CASING	WEIGHT PER FOOT	SETTING DEPTH	QUANTITY OF CEMENT
12 1/4"	8 5/8"	24.0	300'	Circulate to surface
7 7/8"	4 1/2"	10.5	2000'	150' above pay zone

Well will be drilled to depth of approximately 2000' to evaluate the pay zone in the San Andres formation. If commercial production is indicated, well will be selectively perforated and stimulated.

Attached are: 1. Well Location and Dedication Plat.  
2. Supplemental Drilling Data.  
3. Surface Use Plan.

Gas is not dedicated.

OIL & GAS  
U.S. GEOLOGICAL SURVEY  
ROSWELL, NEW MEXICO

IN ABOVE SPACE DESCRIBE PROPOSED PROGRAM: If proposal is to deepen or plug back, give data on present productive zone and proposed new productive zone. If proposal is to drill or deepen directionally, give pertinent data on subsurface locations and measured and true vertical depths. Give blowout preventer program, if any.

## 24.

SIGNED

TITLE Production Controller

DATE March 22, 1983

(This space for Federal or State office use)

PERMIT NO.

APPROVAL DATE

APPROVED BY

TITLE

CONDITIONS OF APPROVAL, IF ANY:

\*See Instructions On Reverse Side

APPROVAL SUBJECT TO  
GENERAL REQUIREMENTS AND  
SPECIAL STIPULATIONS  
ATTACHED

MEXICO OIL CONSERVATION COMMISSION  
WELL LOCATION AND ACREAGE DEDICATION PLAT

Form C-102  
Supersedes C-128  
Effective 1-1-65

All distances must be from the outer boundaries of the Section.

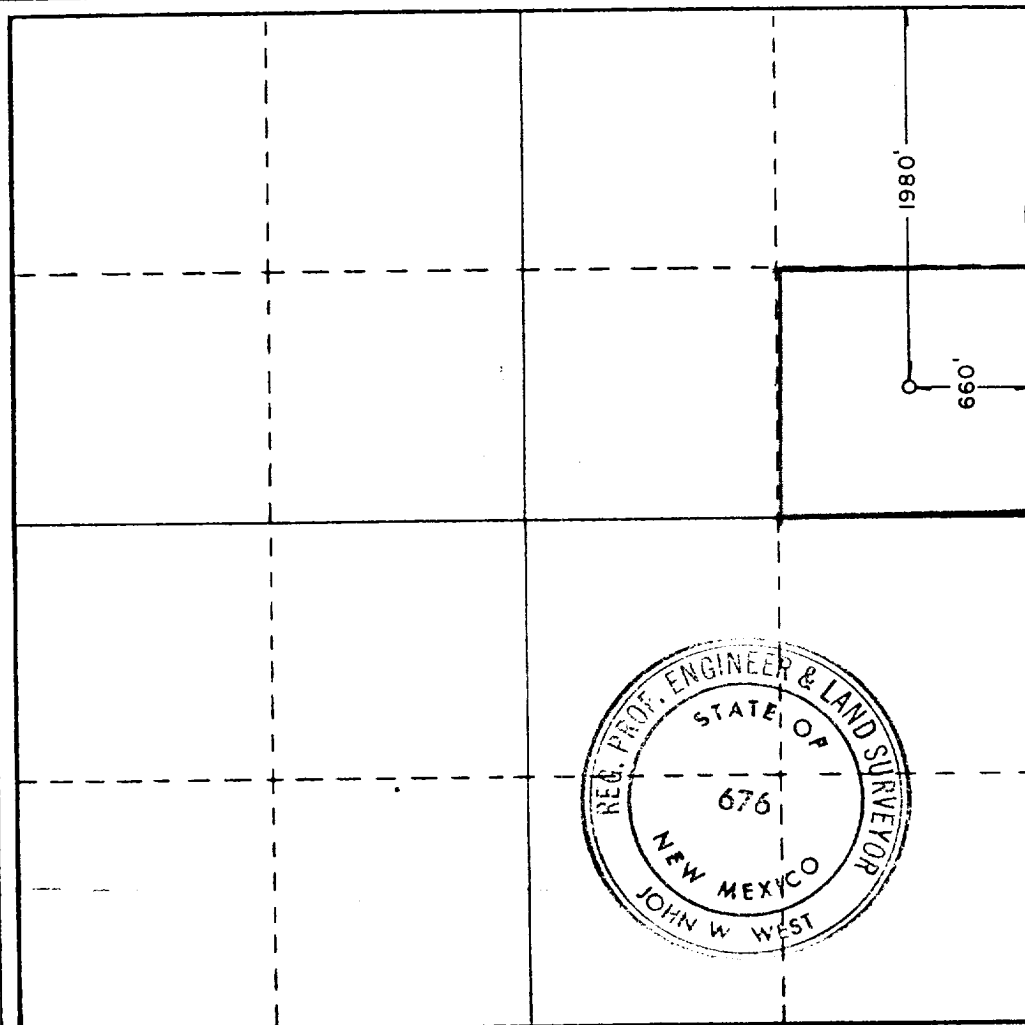
Operator <b>Stevens Oil Company</b>			Lease <b>Sorenson Fed.</b>		Well No. <b>1</b>
Unit Letter <b>H</b>	Section <b>18</b>	Township <b>7 South</b>	Range <b>27 East</b>	County <b>Chaves</b>	
Actual Footage Location of Well: <div style="display: flex; justify-content: space-between;"> <span><b>1980</b> feet from the <b>north</b> line and</span> <span><b>660</b> feet from the <b>east</b> line</span> </div>					
Ground Level Elev. <b>3942.5'</b>	Producing Formation <b>San Andres</b>	Pool <b>Wildcat</b>		Dedicated Acreage: <b>40</b> Acres	

1. Outline the acreage dedicated to the subject well by colored pencil or hachure marks on the plat below.
2. If more than one lease is dedicated to the well, outline each and identify the ownership thereof (both as to working interest and royalty).
3. If more than one lease of different ownership is dedicated to the well, have the interests of all owners been consolidated by communitization, unitization, force-pooling, etc?

☐ Yes    ☐ No    If answer is "yes," type of consolidation \_\_\_\_\_

If answer is "no," list the owners and tract descriptions which have actually been consolidated. (Use reverse side of this form if necessary.) \_\_\_\_\_

No allowable will be assigned to the well until all interests have been consolidated (by communitization, unitization, forced-pooling, or otherwise) or until a non-standard unit, eliminating such interests, has been approved by the Commission.



**CERTIFICATION**

I hereby certify that the information contained herein is true and complete to the best of my knowledge and belief.

Name

**Pat Thompson**

Position

**Production Controller**

Company

**STEVENS OPERATING CORPORATION**

Date

I hereby certify that the well location shown on this plat was plotted from field notes of actual surveys made by me or under my supervision, and that the same is true and correct to the best of my knowledge and belief.

Date Surveyed

**March 9, 1983**

Registered Professional Engineer and/or Land Surveyor

Certificate No.

**John W. West, NM L.S. 676**

0 330 660 990 1320 1650 1980 2310 2640 2970 3300 3630 3960 4290 4620 4950 5280 5610 5940 6270 6600

SUPPLEMENTAL DRILLING DATA

STEVENS OPERATING CORPORATION  
SORENSEN FEDERAL #1  
1980 FNL 660 FEL, SEC. 18 T-7-S R-27-E  
CHAVES COUNTY, NEW MEXICO

1. SURFACE FORMATION: Sandstone..

2. ESTIMATED TOPS OF GEOLOGIC MARKERS:

San Andres	1300'	P <sub>1</sub>	1735'
------------	-------	----------------	-------

3. ANTICIPATED POROSITY ZONES:

Water	250'
Oil	1735'

4. CASING DESIGN:

<u>Size</u>	<u>Interval</u>	<u>Weight</u>	<u>Grade</u>	<u>Joint</u>	<u>Condition</u>
8 5/8"	0 - 300'	24.0#	J-55	STC	New
4 1/2"	0 - 2000'	10.5#	J-55	STC	New

5. SURFACE CONTROL EQUIPMENT: A double ram-type preventer (900 series). A sketch of BOP stack is attached.

6. CIRCULATING MEDIUM:

0 - 300	Fresh water with gel added if needed for viscosity.
0 - TD	Salt water conditioned as necessary for control of viscosity and water loss.

7. AUXILIARY EQUIPMENT: Drill string safety valve.

8. TESTING, LOGGING AND CORING PROGRAMS:

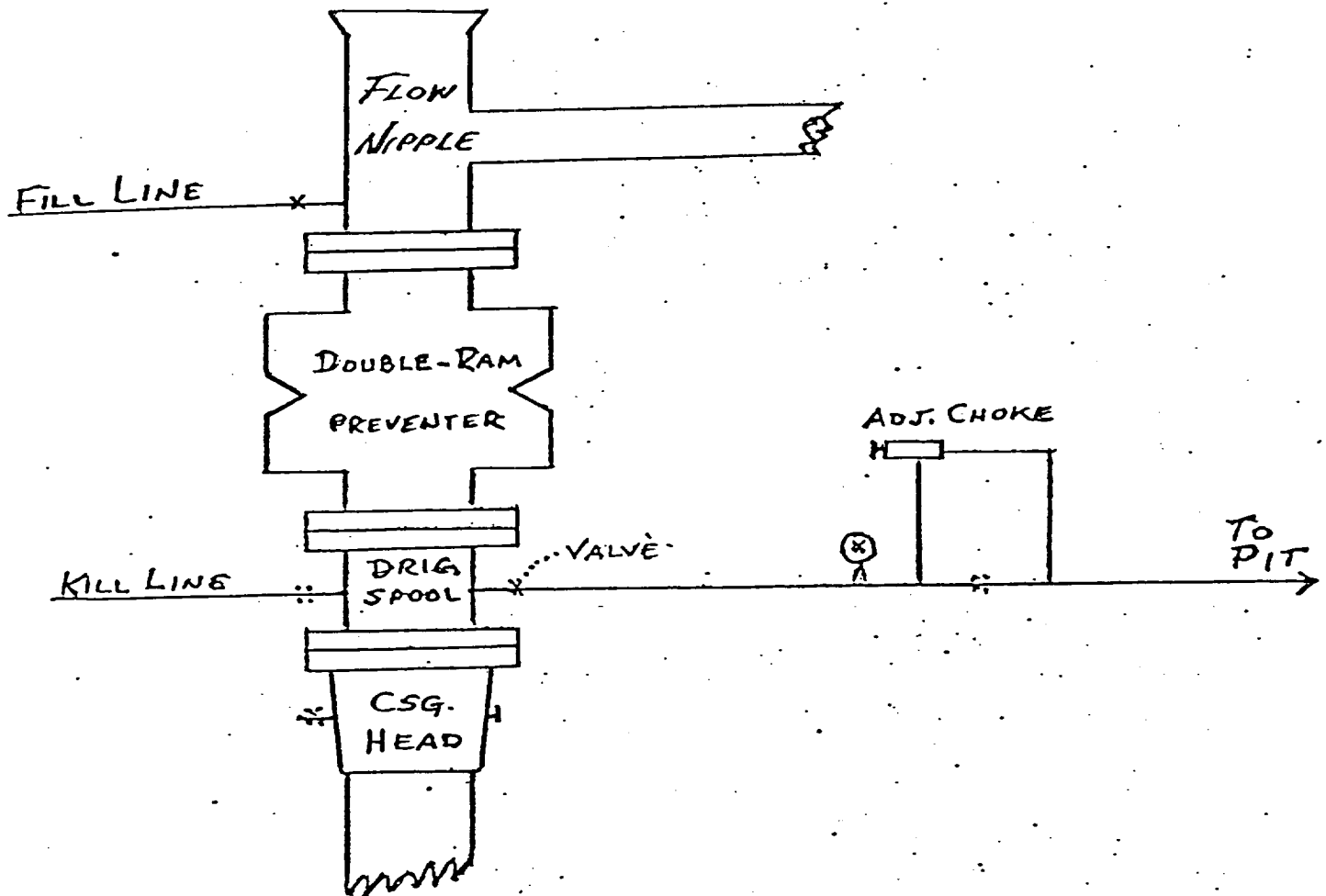
Logging: A compensated Neutron/Formation Density Log w/Gamma Ray and Dual Laterolog Micro-Spherically Focused Lob.

9. ABNORMAL PRESSURES, TEMPERATURES OR GASES: None anticipated.

10. ANTICIPATED DATES: It is planned that drilling operations will commence about April 4, 1983. Duration of drilling and completion operations should be 20 to 60 days.

# B O P & CHOKE MANIFOLD

SERIES 900



STEVENS OPERATING CORPORATION

SDD EXHIBIT "A"

STEVENS OPERATING CORPORATION

SORENSEN FEDERAL #1

1980 FNL 660 FEL Sec. 18 T-7-S R-27-E

CHAVES COUNTY, NEW MEXICO

UNITED STATES  
DEPARTMENT OF THE INTERIOR  
GEOLOGICAL SURVEY

