

UNITED STATES
DEPARTMENT OF THE INTERIOR
GEOLOGICAL SURVEY

SUBMIT IN DUPLICATE*
(Other side)
RECEIVED
reverse side

Form approved.
Budget Bureau No. 42-R1425.

50-005-61997

9/8/83

MAY 05 1983

APPLICATION FOR PERMIT TO DRILL, DEEPEN, OR PLUG BACK

1a. TYPE OF WORK

DRILL ☒

DEEPEN ☐

PLUG BACK ☐

b. TYPE OF WELL

OIL WELL ☐

GAS WELL ☒

OTHER

SINGLE ZONE ☐

MULTIPLE ZONE ☐

2. NAME OF OPERATOR

Yates Petroleum Corporation

3. ADDRESS OF OPERATOR

207 S. 4th, Artesia, New Mexico 88210

4. LOCATION OF WELL (Report location clearly and in accordance with any State requirements.)

At surface

1980' FNL and 1980' FEL

At proposed prod. zone

same

14. DISTANCE IN MILES AND DIRECTION FROM NEAREST TOWN OR POST OFFICE*

Approximately 19 miles NE of Roswell, NM. ROSWELL, NEW MEXICO

15. DISTANCE FROM PROPOSED* LOCATION TO NEAREST PROPERTY OR LEASE LINE, FT.

(Also to nearest drlg. unit line, if any)

1980

16. NO. OF ACRES IN LEASE

320

18. DISTANCE FROM PROPOSED LOCATION* TO NEAREST WELL, DRILLING, COMPLETED, OR APPLIED FOR, ON THIS LEASE, FT.

1/2 mile

19. PROPOSED DEPTH

4850'

21. ELEVATIONS (Show whether DF, RT, GR, etc.)

3531.8
3821.8' GL

23.

PROPOSED CASING AND CEMENTING PROGRAM

SIZE OF HOLE	SIZE OF CASING	WEIGHT PER FOOT	SETTING DEPTH	QUANTITY OF CEMENT
14 3/4"	10 3/4"	40.5# J-55	1100'	800 sx circulated
7 7/8"	4 1/2"	9.5# J-55	TD	350 sx

We propose to drill and test the Abo and intermediate formations. Approximately 1100' of surface casing will be set and cement circulated to shut off gravel and caving. If needed (lost circulation) 8 5/8" intermediate casing will be run to 1500' and cemented with enough cement calculated to tie back into the surface casing. If commercial, production casing will be run and cemented with adequate cover, perforated, and stimulated as needed for production.

MUD PROGRAM: FW gel/LCM to 1100', Brine to 3500', Brine/KCL water to TD.

BOP PROGRAM: BOP's will be installed at the offset and tested daily.

GAS NOT DEDICATED.

IN ABOVE SPACE DESCRIBE PROPOSED PROGRAM: If proposal is to deepen or plug back, give data on present productive zone and proposed new productive zone. If proposal is to drill or deepen directionally, give pertinent data on subsurface locations and measured and true vertical depths. Give blowout preventer program, if any.

24.

SIGNED

Cy Cowan

TITLE Cy Cowan

DATE 4/26/83

(This space for Federal or State office use)

PERMIT NO.

APPROVAL DATE

APPROVED BY

A. D. Lopez

TITLE

DATE

5/4/83

CONDITIONS OF APPROVAL, IF ANY:

APPROVAL SUBJECT TO
GENERAL REQUIREMENTS AND
SPECIAL STIPULATIONS
ATTACHED

Posted A.P. Book
5-6-83

**NEW MEXICO OIL CONSERVATION COMMISSION
WELL LOCATION AND ACREAGE DEDICATION PLAT**

Form C-102
Supersedes C-128
Effective 1-1-65

All distances must be from the outer boundaries of the Section.

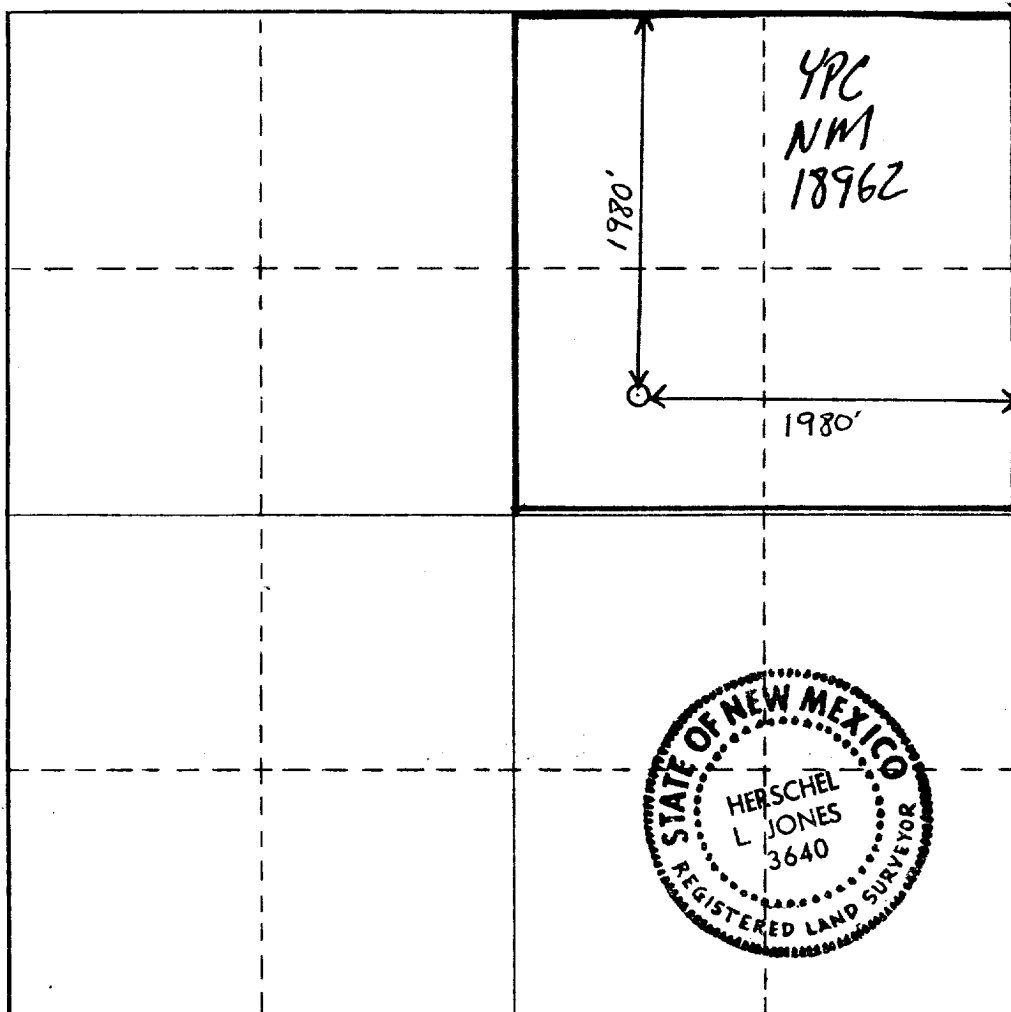
Operator YATES PETROLEUM CORPORATION			Lease Witter "VW" Federal		Well No. 2
Unit Letter G	Section 35	Township 7 South	Range 26 East	County Chaves	
Actual Footage Location of Well:					
1980 feet from the North line and		1980 feet from the East line			
Ground Level Elev. 3521.8' GL	Producing Formation A130	Pool PECOSS LOPE A130	Dedicated Acreage: 160 Acres		

1. Outline the acreage dedicated to the subject well by colored pencil or hachure marks on the plat below.
2. If more than one lease is dedicated to the well, outline each and identify the ownership thereof (both as to working interest and royalty).
3. If more than one lease of different ownership is dedicated to the well, have the interests of all owners been consolidated by communitization, unitization, force-pooling, etc?

☐ Yes ☒ No If answer is "yes," type of consolidation _____

If answer is "no," list the owners and tract descriptions which have actually been consolidated. (Use reverse side of this form if necessary.) _____

No allowable will be assigned to the well until all interests have been consolidated (by communitization, unitization, forced-pooling, or otherwise) or until a non-standard unit, eliminating such interests, has been approved by the Commission.



CERTIFICATION

I hereby certify that the information contained herein is true and complete to the best of my knowledge and belief.

Cy Cowan

Name
Cy Cowan
Position
Regulatory Agent
Company
Yates Petroleum Corp.
Date
4/25/83

I hereby certify that the well location shown on this plat was plotted from field notes of actual surveys made by me or under my supervision, and that the same is true and correct to the best of my knowledge and belief.

Date Surveyed
April 22, 1983
Registered Professional Engineer and/or Land Surveyor
Herschel L. Jones
Certificate No.
3640

0 330 660 990 1320 1650 1980 2310 2640 2000 1500 1000 500 0

YATES PETROLEUM CORPORATION
Witter "VW" Federal #2
1980' FNL and 1980' FEL
Section 25-T7S-R26E

In conjunction with Form 9-331C, Application for Permit to Drill subject well, Yates Petroleum Corporation submits the following ten items of pertinent information in accordance with USGS requirements.

1. The geologic surface formation is sandy alluvium.
2. The estimated tops of geologic markers are as follows:

San Andres	930'
Glorieta	2104'
Fullerton	3516'
Abo	4186'
TD	4850'

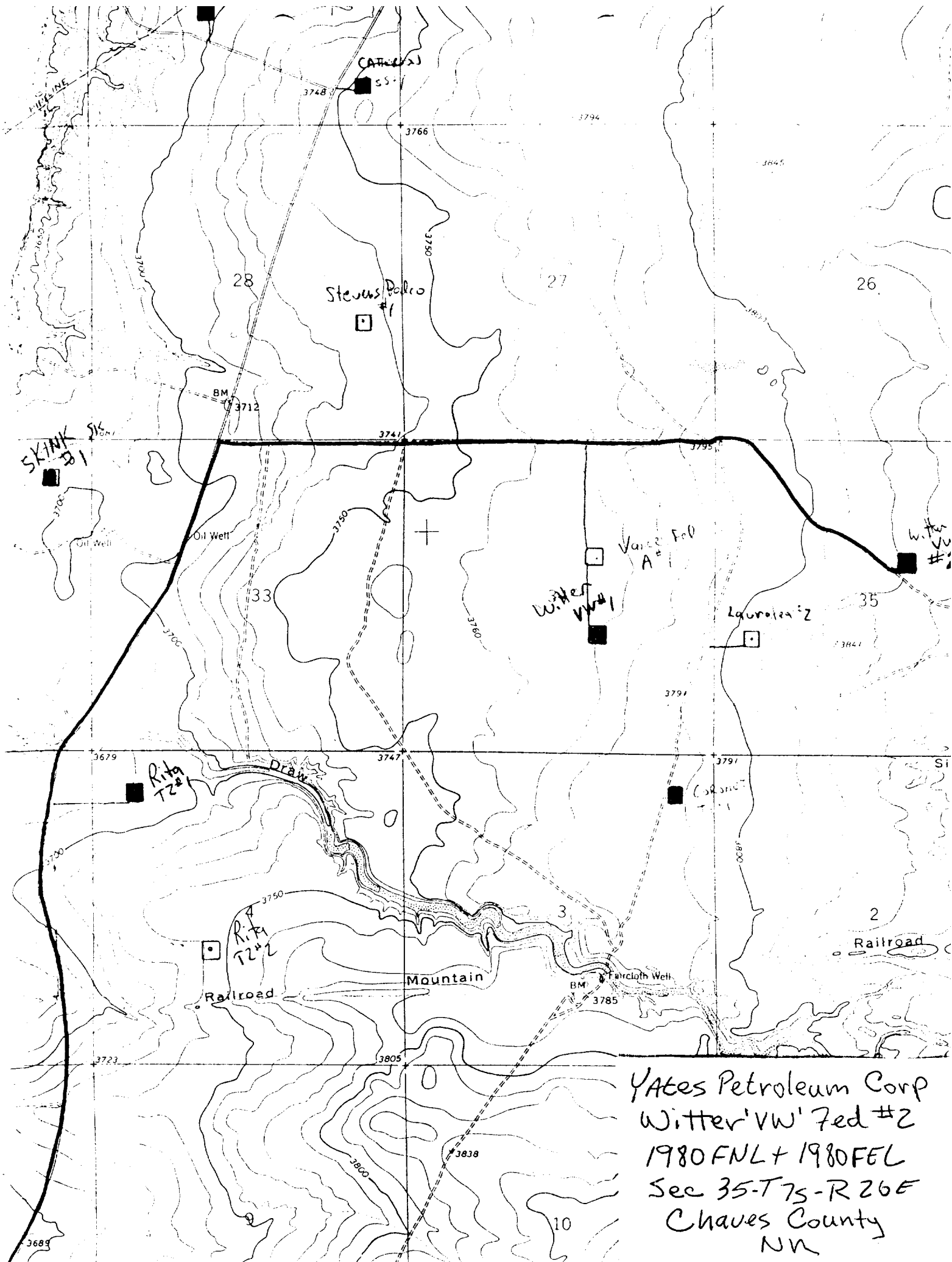
3. The estimated depths at which anticipated water, oil or gas formations are expected to be encountered:

Water: 250-350'

Oil or Gas: Abo 4210'

4. Proposed Casing Program: See Form 9-331C.
5. Pressure Control Equipment: See Form 9-331C.
6. Mud Program: See Form 9-331C.
7. Auxiliary Equipment: Kelly Cock; pit level indicators and flow sensor equipment; sub with full-opening valve on floor, drill pipe connection.
8. Testing, Logging and Coring Program:

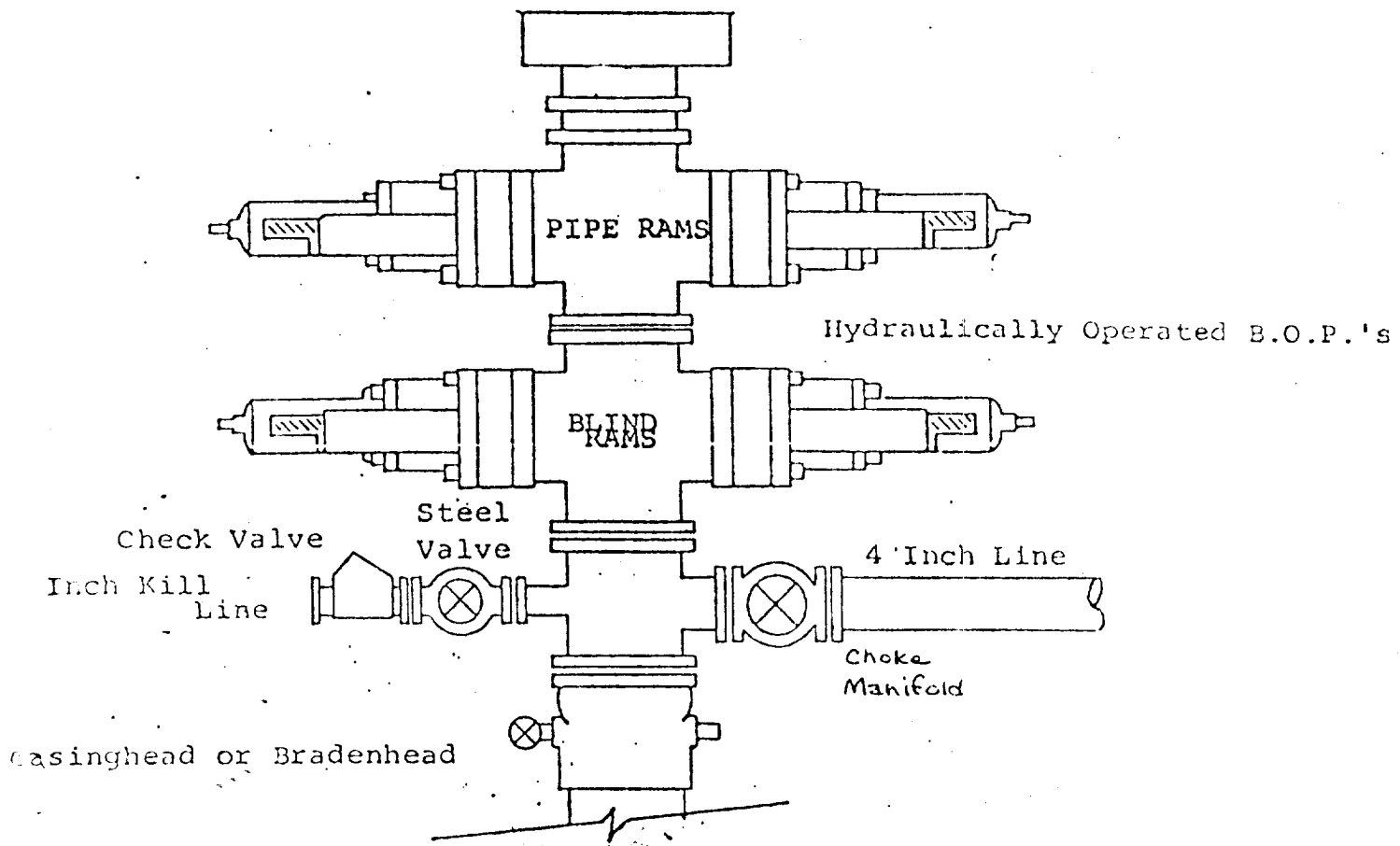
Samples: Surface casing to TD.
DST's: As warranted.
Coring: None.
Logging: CNL-FDC TD to csg w/GR-CNL to surface & DLL from TD to csg.
9. No abnormal pressures or temperatures are anticipated.
10. Anticipated starting date: As soon as possible after approval.



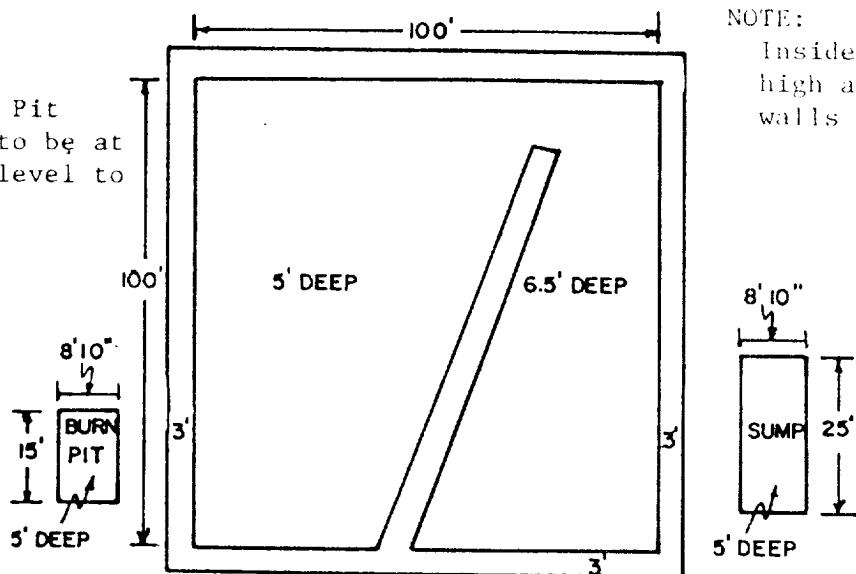
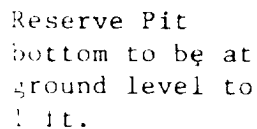
Yates Petroleum Corp
Witter 'VW' Fed #2
1980 FNL + 1980 FEL
Sec 35-T7S-R26E
Chaves County
NM

EXHIBIT B

BDP DIAGRAM

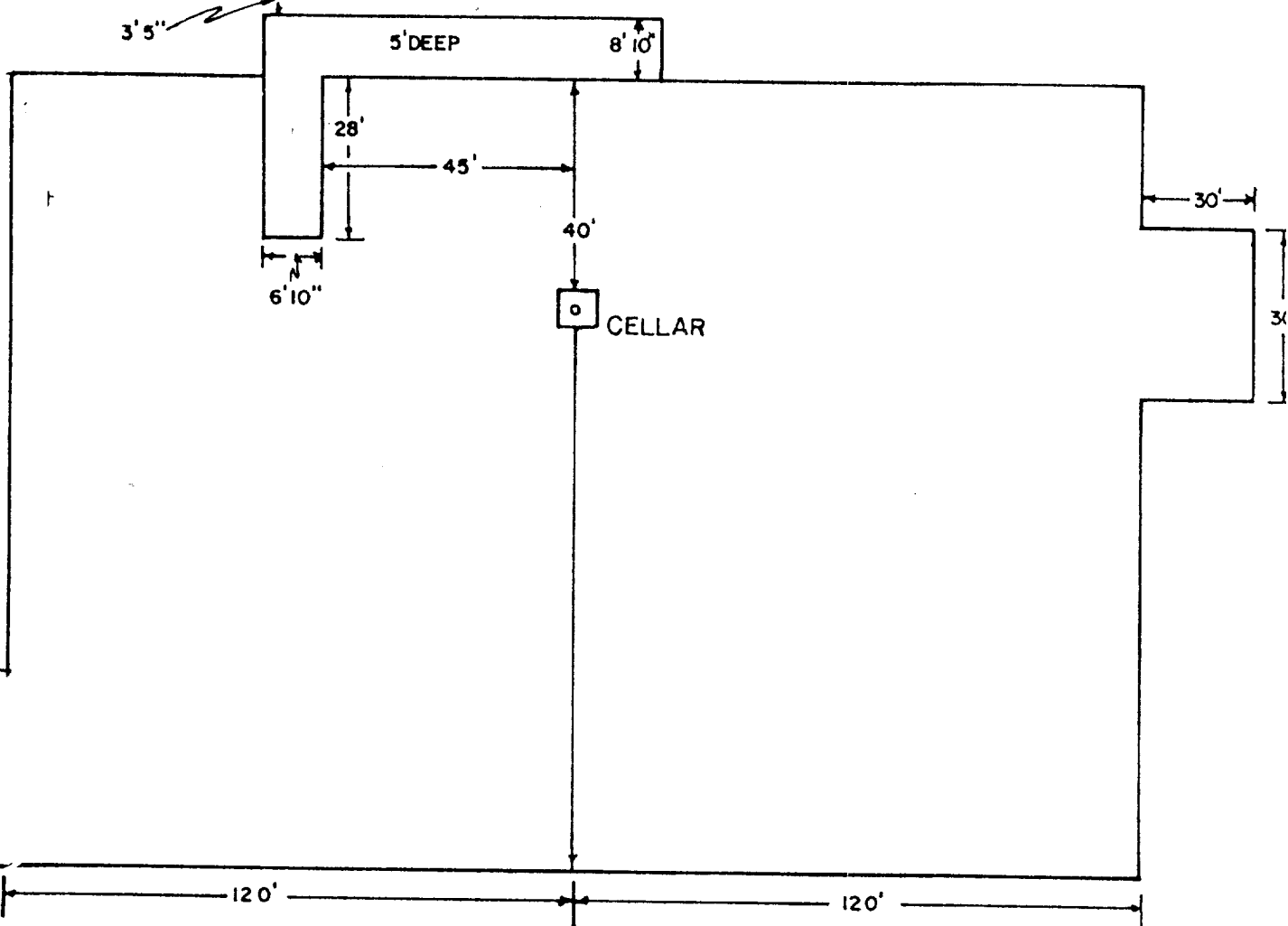
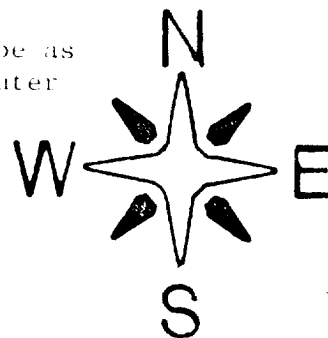


YATES PETROLEUM CORP.
Exhibit C



NOTE:

Inside walls must be as high and wide as outer walls of pit.



ROAD



207 SOUTH FOURTH STREET
ARTESIA, NEW MEXICO 88210

TELEPHONE (505) 748-1331

S. P. YATES

PRESIDENT

MARTIN YATES, III

VICE PRESIDENT

JOHN A. YATES

VICE PRESIDENT

B. W. HARPER

SEC. TREAS.

APRIL 26, 1983

MR. GEORGE STEWART
MINERALS MANAGEMENT SERVICE
FEDERAL BUILDING
ROSWELL, NEW MEXICO 88201

RE: WITTER "VW" FED #2

DEAR MR. STEWART,

YATES PETROLEUM CORPORATION HAS SUBMITTED AN APPLICATION TO DRILL A WELL ON SURFACE OWNED BY GAY M. VANCE, C/O MARLEY RT. 2 Box 153E, ROSWELL, NM. THIS WELL IS LOCATED IN SEC. 35 T7S-R26E, 1980' FNL AND 1980' FEL, CHAVES COUNTY, NEW MEXICO.

IN AN ON-SITE VISIT WITH MR. BOB MARLEY, IT WAS AGREED THAT WE WOULD COMPENSATE HIM MONETARILY FOR THE SURFACE DAMAGES INCURRED. AFTER DRILLING HAS BEEN COMPLETED, THE PIT AREA WILL BE LEVELED AFTER IT IS DRY AND ALONG WITH THE PAD WILL BE LEFT TO RESEED NATURALLY.

SINCERELY,


CY COWAN
REGULATORY AGENT
YATES PETROLEUM CORPORATION

CC/DW