

9/87

DEPARTMENT OF THE INTERIOR

GEOLOGICAL SURVEY

APPLICATION FOR PERMIT TO DRILL, DEEPEN, OR PLUG BACK

1a. TYPE OF WORK

DRILL ☒MAY 10 1983 DEEPEN ☐PLUG BACK ☐

b. TYPE OF WELL

OIL

WELL ☐

GAS

WELL ☒OTHER ☐

SINGLE

ZONE ☐

MULTIPLE

ZONE ☐

2. NAME OF OPERATOR

Yates Petroleum Corporation

3. ADDRESS OF OPERATOR

207 S. 4th, Artesia, New Mexico 88210

4. LOCATION OF WELL (Report location clearly and in accordance with any State requirements.)*

At surface

1980' FSL and 660' FEL

At proposed prod. zone

same

14. DISTANCE IN MILES AND DIRECTION FROM NEAREST TOWN OR POST OFFICE

Approximately 11 miles NE of Roswell, New Mexico

15. DISTANCE FROM PROPOSED*

LOCATION TO NEAREST

PROPERTY OR LEASE LINE, FT.

(Also to nearest drlg. unit line, if any)

660'

18. DISTANCE FROM PROPOSED LOCATION*

TO NEAREST WELL, DRILLING, COMPLETED,
OR APPLIED FOR, ON THIS LEASE, FT.

16. NO. OF ACRES IN LEASE

640

19. PROPOSED DEPTH

4300'

17. NO. OF ACRES ASSIGNED
TO THIS WELL

160

20. ROTARY OR CABLE TOOLS

Rotary

21. ELEVATIONS (Show whether DF, RT, GR, etc.)

3576.4' GL

22. APPROX. DATE WORK WILL START*

ASAP

23.

PROPOSED CASING AND CEMENTING PROGRAM

SIZE OF HOLE	SIZE OF CASING	WEIGHT PER FOOT	SETTING DEPTH	QUANTITY OF CEMENT
14 3/4"	10 3/4"	40.5# J-55	850'	600 sx circulated
7 7/8"	4 1/2"	9.5# J-55	TD	350 sx

We propose to drill and test the Abo and intermediate formations. Approximately 850' of surface casing will be set and cement circulated to shut off gravel and caving. If needed (lost circulation) 8 5/8" intermediate casing will be run to 1500' and cemented with enough cement calculated to tie back into the surface casing. If commercial, production casing will be run and cemented with adequate cover, perforated and stimulated as needed for production.

MUD PROGRAM: FW gel/LCM to 850', Brine to 3200', Brine & KCL water to TD.

GAS NOT DEDICATED.

IN ABOVE SPACE DESCRIBE PROPOSED PROGRAM: If proposal is to deepen or plug back, give data on present productive zone and proposed new productive zone. If proposal is to drill or deepen directionally, give pertinent data on subsurface locations and measured and true vertical depths. Give blowout preventer program, if any.

24.

SIGNED

Cy Cowan

TITLE Regulatory Agent

DATE 4/22/83

(This space for Federal or State office use)

PERMIT NO.

APPROVAL DATE

APPROVED BY

A. C. Lopez

TITLE

*Acting Asst. District
Manager for
District*

DATE

5/9/83

CONDITIONS OF APPROVAL, IF ANY:

APPROVAL SUBJECT TO
GENERAL REQUIREMENTS AND
SPECIAL STIPULATIONS
ATTACHED

NEW MEXICO OIL CONSERVATION COMMISSION
WELL LOCATION AND ACREAGE DEDICATION PLAT

Form C-102
Supersedes C-128
Effective 1-1-65

All distances must be from the outer boundaries of the Section.

Operator YATES PETROLEUM CORPORATION			Lease MARIE "VU" FEDERAL		Well No. 1
Unit Letter I	Section 20	Township 9 South	Range 25 East	County Chaves	
Actual Footage Location of Well: 1980 feet from the South line and 660 feet from the East line					
Ground Level Elev. 3576.4	Producing Formation ABO		Depth Pecos Slope ABO		Dedicated Acreage: 160 Acres

1. Outline the acreage dedicated to the subject well by colored pencil or hachure marks on the plat below.
2. If more than one lease is dedicated to the well, outline each and identify the ownership thereof (both as to working interest and royalty).
3. If more than one lease of different ownership is dedicated to the well, have the interests of all owners been consolidated by communitization, unitization, force-pooling, etc?

☐ Yes ☒ No If answer is "yes," type of consolidation _____

If answer is "no," list the owners and tract descriptions which have actually been consolidated. (Use reverse side of this form if necessary.) _____

No allowable will be assigned to the well until all interests have been consolidated (by communitization, unitization, forced-pooling, or otherwise) or until a non-standard unit, eliminating such interests, has been approved by the Commission.

CERTIFICATION

I hereby certify that the information contained herein is true and complete to the best of my knowledge and belief.

Cy Cowan
Name
Cy Cowan
Position
Regulatory Agent
Company
Yates Petroleum Corp.
Date
4/22/83

I hereby certify that the well location shown on this plat was plotted from field notes of actual surveys made by me or under my supervision, and that the same is true and correct to the best of my knowledge and belief.

Date Surveyed
4/13/83
Registered Professional Engineer and/or Land Surveyor
Herschel L. Jones
Certificate No.
3640



YATES PETROLEUM CORPORATION
Marie "VU" Federal #1
1980' FSL and 660' FEL
Chaves County, New Mexico

In conjunction with Form 9-331C, Application for Permit to Drill subject well, Yates Petroleum Corporation submits the following ten items of pertinent information in accordance with USGS requirements.

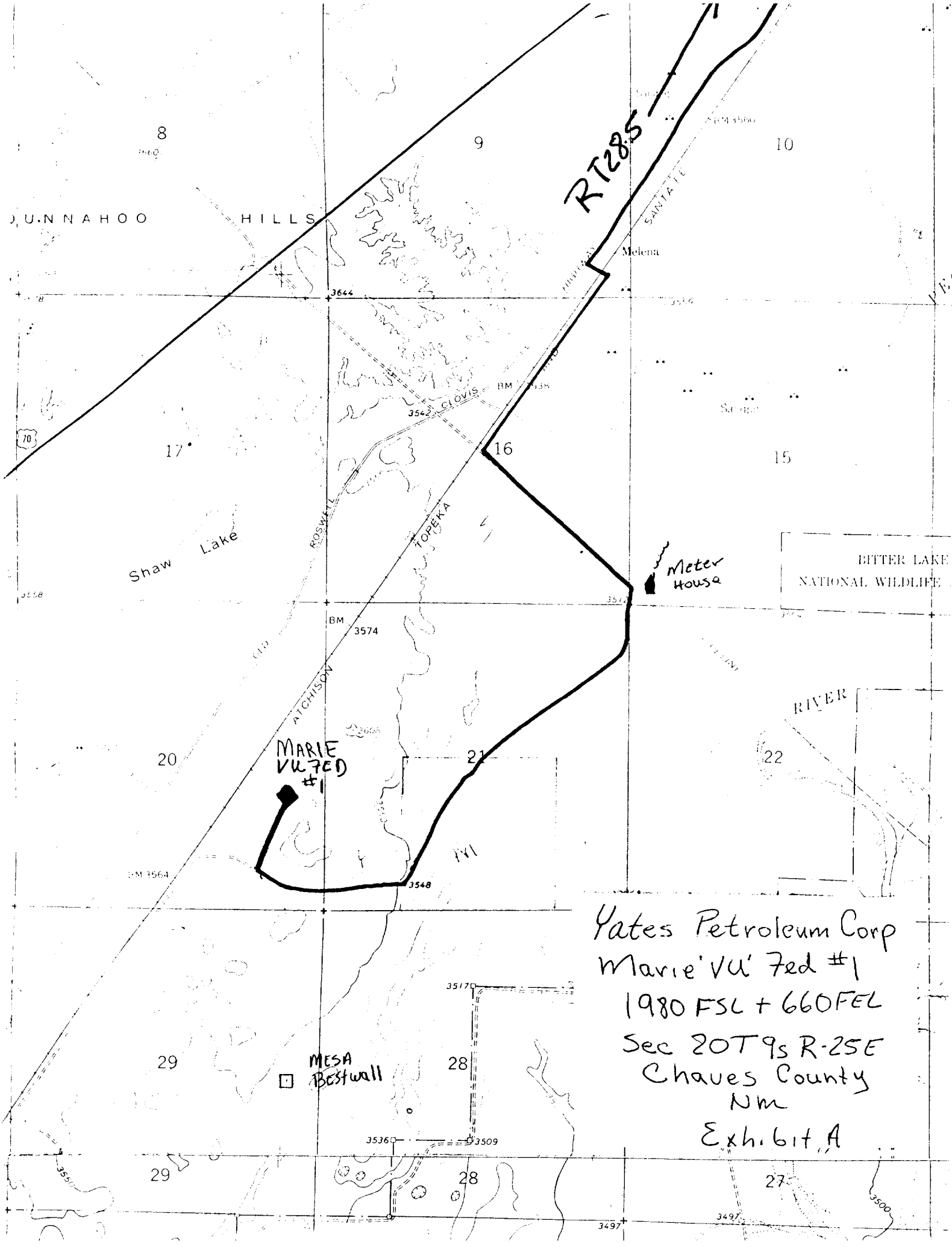
1. The geologic surface formation is sandy alluvium.
2. The estimated tops of geologic markers are as follows:

San Andres	580'
Glorieta	1440'
Fullerton	2870'
Abo	3586'
TD	4300'
3. The estimated depths at which anticipated water, oil or gas formations are expected to be encountered:

Water: 250' - 350'

Oil or Gas: 3610'
4. Proposed Casing Program: See Form 9-331C.
5. Pressure Control Equipment: See Form 9-331C.
6. Mud Program: See Form 9-331C.
7. Auxiliary Equipment: Kelly Cock; pit level indicators and flow sensor equipment; sub with full-opening valve on floor, drill pipe connection.
8. Testing, Logging and Coring Program:

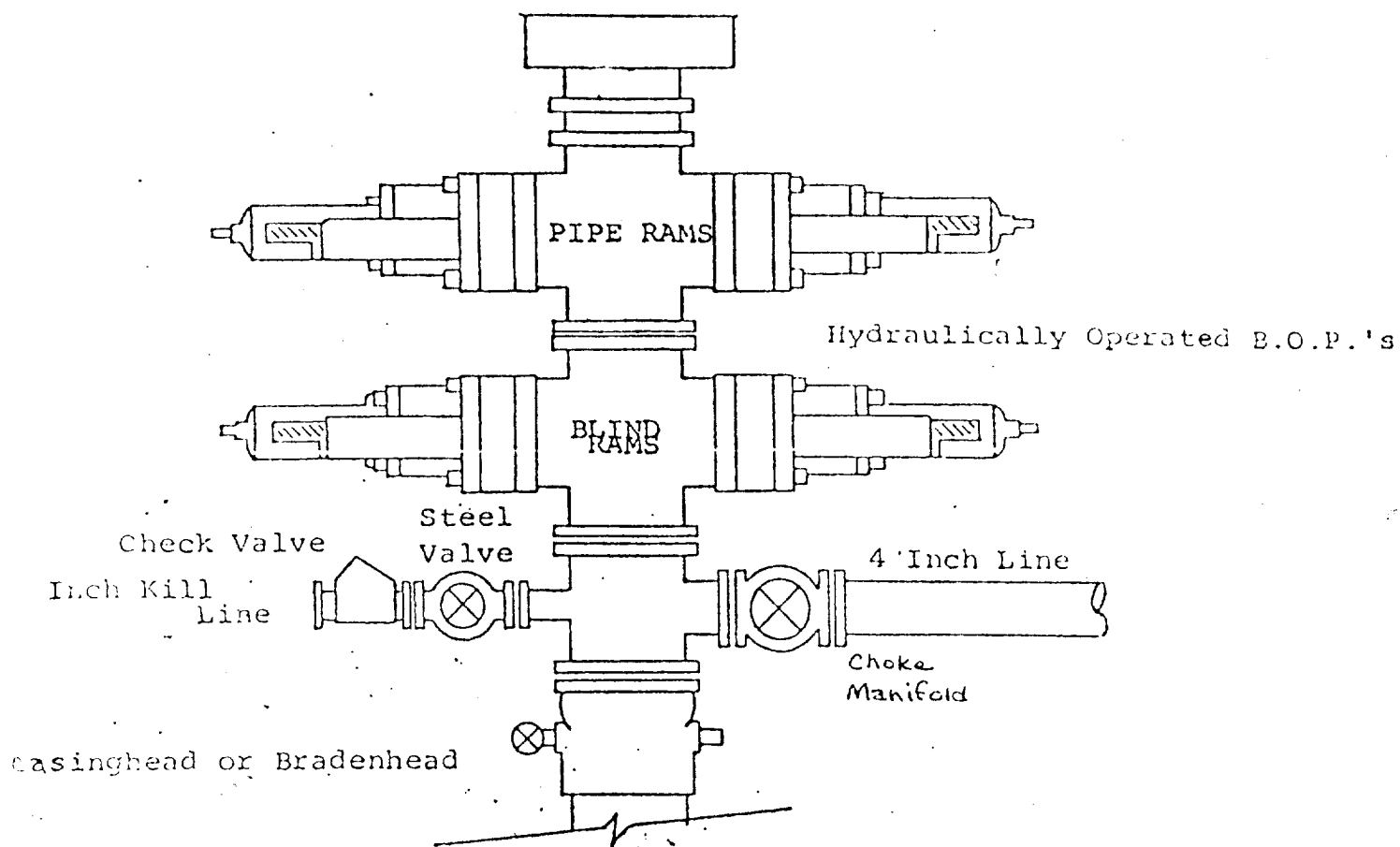
Samples: Surface casing to TD.
DST's: As warranted.
Coring: None
Logging: CNL-FDC TD to csg w/GR-CNL to surface & DLL from TD to csg.
9. No abnormal pressures or temperatures are anticipated.
10. Anticipated starting date: As soon as possible after approval.



Yates Petroleum Corp
Marie'Vu' Fed #1
1980 FSL + 660FEL
Sec 20T9s R-25E
Chaves County
Nm
Exhibit A

EXHIBIT B

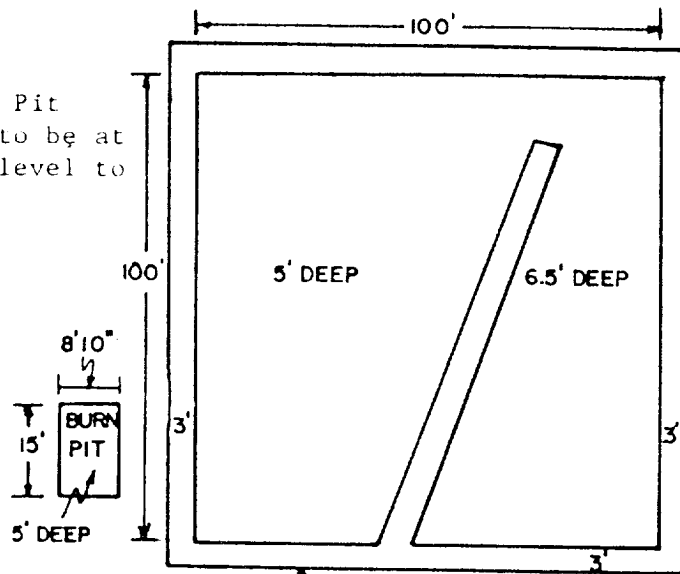
BDP DIAGRAM



YATES PETROLEUM CORP.

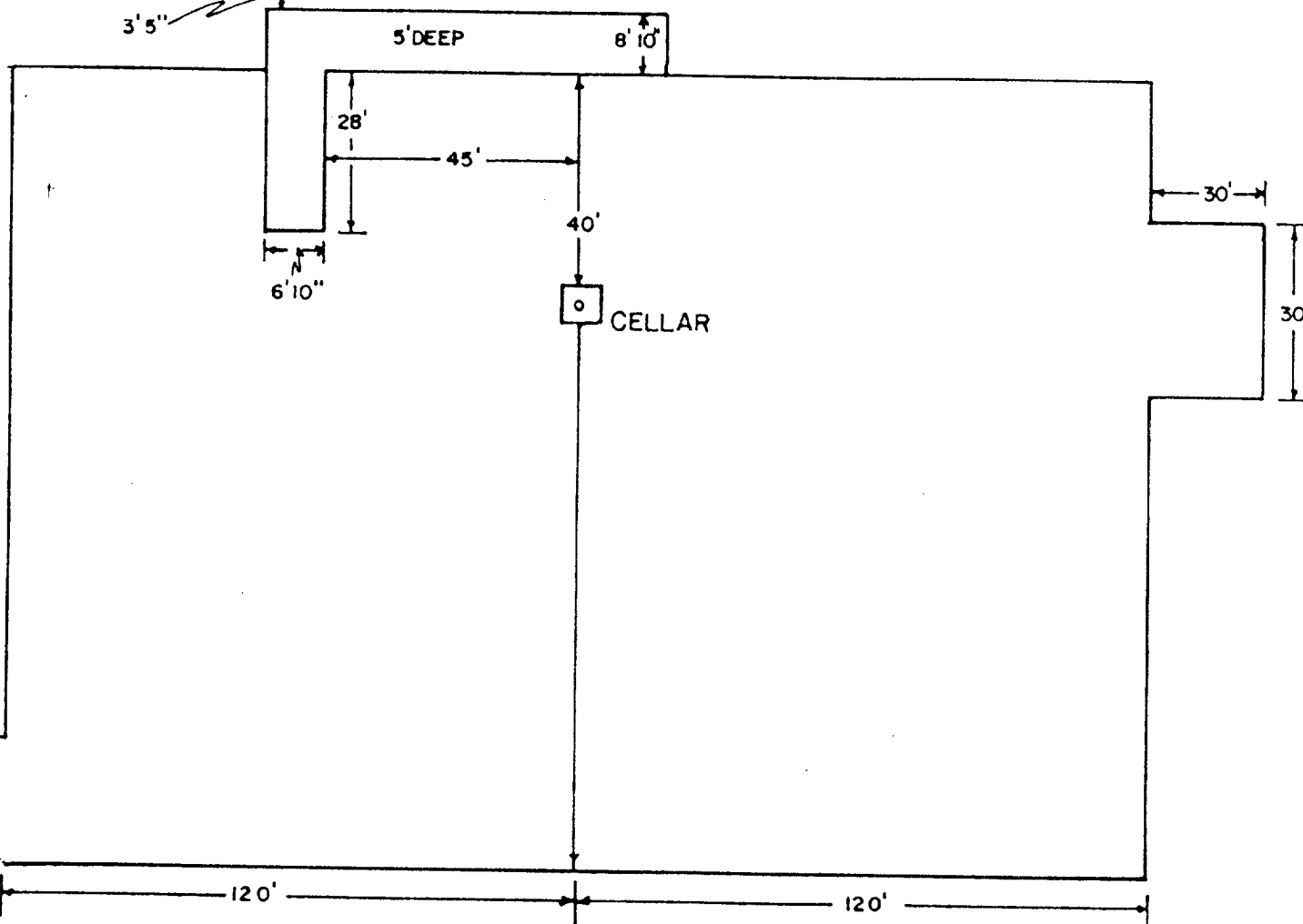
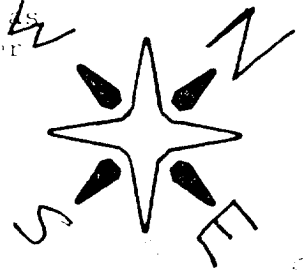
Exhibit C

Reserve Pit
bottom to be at
ground level to
1 ft.



NOTE:

Inside walls must be as
high and wide as outer
walls of pit.



ROAD