

UNITED STATES  
DEPARTMENT OF THE INTERIOR  
GEOLOGICAL SURVEY

## APPLICATION FOR PERMIT TO DRILL, DEEPEN, OR PLUG BACK

## 1a. TYPE OF WORK

DRILL ☒DEEPEN ☐APR 28 1983  
PLUG BACK ☐

## b. TYPE OF WELL

OIL  
WELL ☐GAS  
WELL ☒OTHER ☐SINGLE  
ZONE ☐ & GAS MULTIPLE  
ZONE ☐

## 2. NAME OF OPERATOR

McClellan Oil Corporation ✓

## 3. ADDRESS OF OPERATOR

P.O. Drawer 730, Roswell, New Mexico 88202

## 4. LOCATION OF WELL (Report location clearly and in accordance with any State requirements)

At surface

1980' FNL &amp; 1980' FWL

At proposed prod. zone

## 14. DISTANCE IN MILES AND DIRECTION FROM NEAREST TOWN OR POST OFFICE\*

25 miles north &amp; 13 miles east of Roswell, N.M.

## 15. DISTANCE FROM PROPOSED\*

LOCATION TO NEAREST  
PROPERTY OR LEASE LINE, FT.  
(Also to nearest drlg. unit line, if any)

1980'

## 16. NO. OF ACRES IN LEASE

2441.49

17. NO. OF ACRES ASSIGNED  
TO THIS WELL

160

## 18. DISTANCE FROM PROPOSED LOCATION\*

TO NEAREST WELL, DRILLING, COMPLETED,  
OR APPLIED FOR, ON THIS LEASE, FT.

1867'

## 19. PROPOSED DEPTH

4150'

## 20. ROTARY OR CABLE TOOLS

Rotary

## 21. ELEVATIONS (Show whether DF, RT, GR, etc.)

3848' G.L.

## 22. APPROX. DATE WORK WILL START\*

May 30, 1983

## 23. PROPOSED CASING AND CEMENTING PROGRAM

SIZE OF HOLE	SIZE OF CASING	WEIGHT PER FOOT	SETTING DEPTH	QUANTITY OF CEMENT
17-1/2"	13-3/8"	48	40	6 yards
12-1/4"	8-5/8"	23	1000	250 sx (Circulated)
7-7/8"	4-1/2"	10.5	4150	350 sx

Propose to drill and test the Abo formation. Approximately 1000' of surface casing will be set and cement circulated. If production is indicated, will run production casing and attempt completion.

Geologic Tops: San Andres - 575' Glorieta - 1585' Tubb - 2870' Abo - 3625'

Mud Program: Fresh water to top of Abo. Will mud up with 15cc water loss, 35 visc. mud and 9.6-9.8 lb/gal wt.

Gas is dedicated.

IN ABOVE SPACE DESCRIBE PROPOSED PROGRAM: If proposal is to deepen or plug back, give data on present productive zone and proposed new productive zone. If proposal is to drill or deepen directionally, give pertinent data on subsurface locations and measured and true vertical depths. Give blowout preventer program, if any.

24. SIGNED Mark McClellan TITLE Geologist DATE 4/28/83

(This space for Federal or State office use)

PERMIT NO. \_\_\_\_\_

APPROVAL DATE \_\_\_\_\_

APPROVED BY A.A. LopezTITLE Acting Asst. DistrictDATE 5/17/83

CONDITIONS OF APPROVAL, IF ANY: \_\_\_\_\_

Supervisor for Minerals

\*See Instructions On Reverse Side

All distances must be from the outer boundaries of the Section.

Operator McClellan Oil Corp.			Lease MOC Federal		Well No. #6
Unit Letter F	Section 30	Township 5 South	Range 25 East	County Chaves	
Actual Footage Location of Well: 1980 feet from the North line and 1980 feet from the West line					
Ground Level Elev. 3848	Producing Formation Abo		Pool Pecos Slope Abo	Dedicated Acres 160 Acres	

1. Outline the acreage dedicated to the subject well by colored pencil or hatchure marks on the plat below.

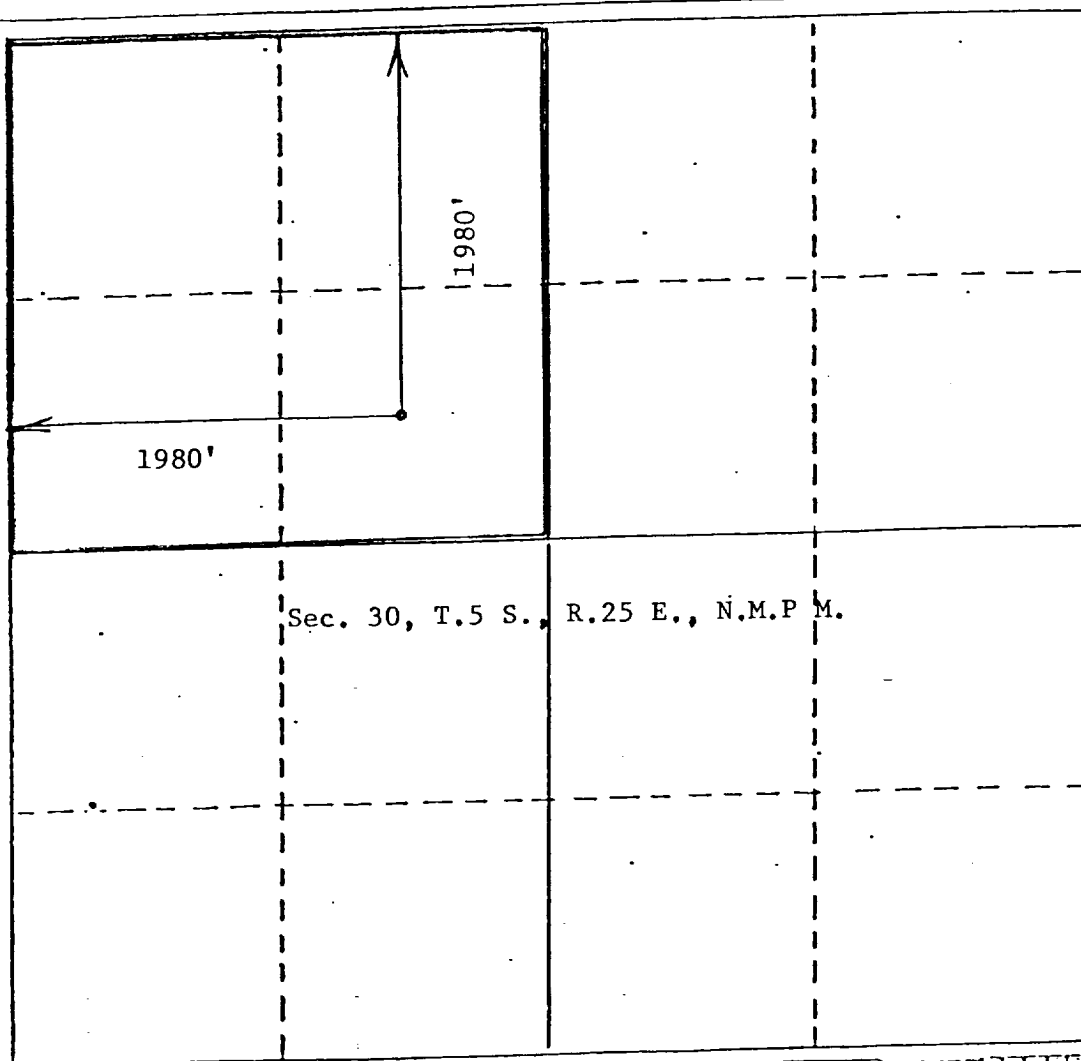
2. If more than one lease is dedicated to the well, outline each and identify the ownership thereof (both as to working interest and royalty).

3. If more than one lease of different ownership is dedicated to the well, have the interests of all owners been consolidated by communitization, unitization, force-pooling, etc?

☐ Yes ☐ No If answer is "yes," type of consolidation \_\_\_\_\_

If answer is "no," list the owners and tract descriptions which have actually been consolidated. (Use reverse side of this form if necessary.) \_\_\_\_\_

No allowable will be assigned to the well until all interests have been consolidated (by communitization, unitization, forced-pooling, or otherwise) or until a non-standard unit, eliminating such interests, has been approved by the Division.



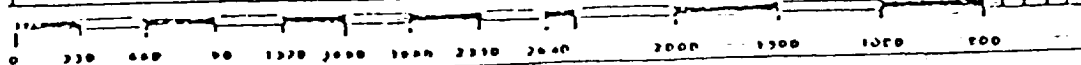
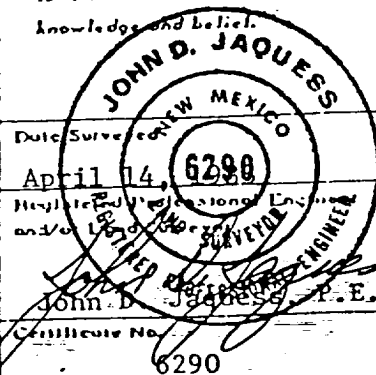
#### CERTIFICATION

I hereby certify that the information contained herein is true and complete to the best of my knowledge and belief.

*Mark McClellan*

Name  
Mark McClellan  
Position  
Geologist  
Company  
McClellan Oil Corporation  
Date  
April 22, 1983

I hereby certify that the well location shown on this plat was plotted from field notes of actual surveys made by me or under my supervision, and that the same is true and correct to the best of my knowledge and belief.



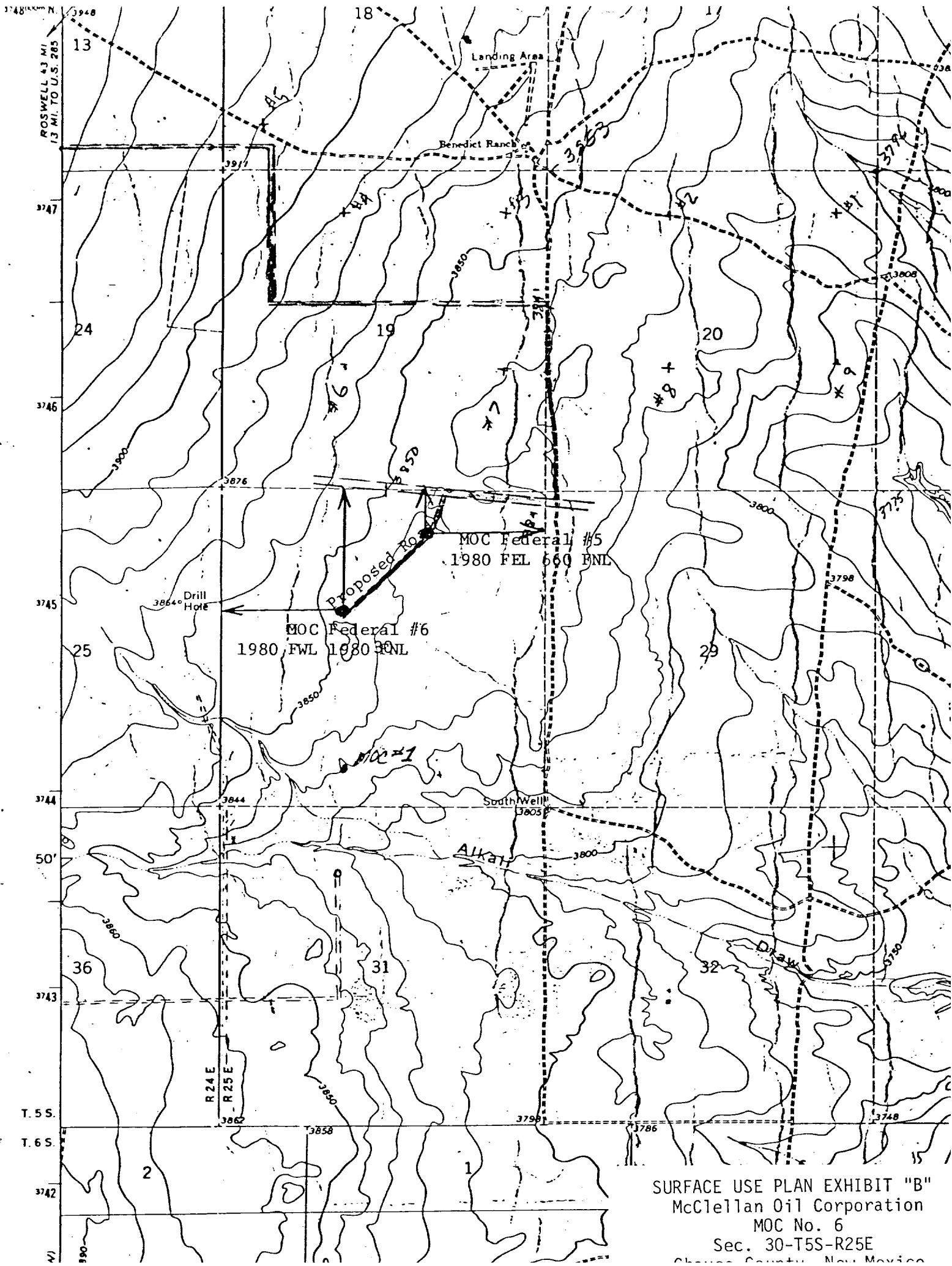
RECEIVED

APR 29 1983

1. Location: Sec. 30-T5S-R25E, 1980' FNI & 1980' FWI OIL & GAS
2. Elevation: 3848' G.L. ROSWELL, NEW MEXICO
3. Geologic name of surface formation: See Archaeological Report
4. Type of drilling rig and associated equipment: Rotary
5. Proposed drilling depth and objective formation: 4150', Abo
6. Estimated tops of geologic markers:

Yates _____	San Andres <u>575'</u>	Abo <u>3625'</u>
7-Rivers _____	Glorieta <u>1585'</u>	Wolfcamp _____
Queen _____	Tubb <u>2870'</u>	_____
7. Estimated depths of any oil, water, or gas: Possible gas: 3625-4150'
- 8-9. Proposed casing program:

<u>13-3/8" @ 40'</u>	<u>Grade H-40</u>	<u>Wt. 48</u>	<u>Type Cement</u>	<u>6 yards</u>
<u>8-5/8" @ 1000'</u>	<u>Grade J-55</u>	<u>Wt. 23</u>	<u>Type Cement</u>	<u>Class "C"</u>
<u>4-1/2" @ 4150'</u>	<u>Grade J-55</u>	<u>Wt. 10.5</u>	<u>Type Cement</u>	<u>Class "C"</u>
10. Specifications for pressure control equipment and testing procedures: \_\_\_\_\_  
Schaffer Model 39 (4500 psi test) See Exhibit "E"
11. Type and characteristics of drilling fluids: Fresh water and native mud to top of Abo. Mud up 100' above Abo w/ 15cc water loss, 35 visc. and 9.6 lb/gal wt. mud.
12. Testing, logging, and coring programs: Compensated Neutron - Compensated Density, Dual Laterolog Gamma Ray Logs
13. Anticipated abnormal pressures or temperature: None anticipated
14. Anticipated commencement and completion date: May 30, 1983 to June 15, 1983
15. Other pertinent information: \_\_\_\_\_



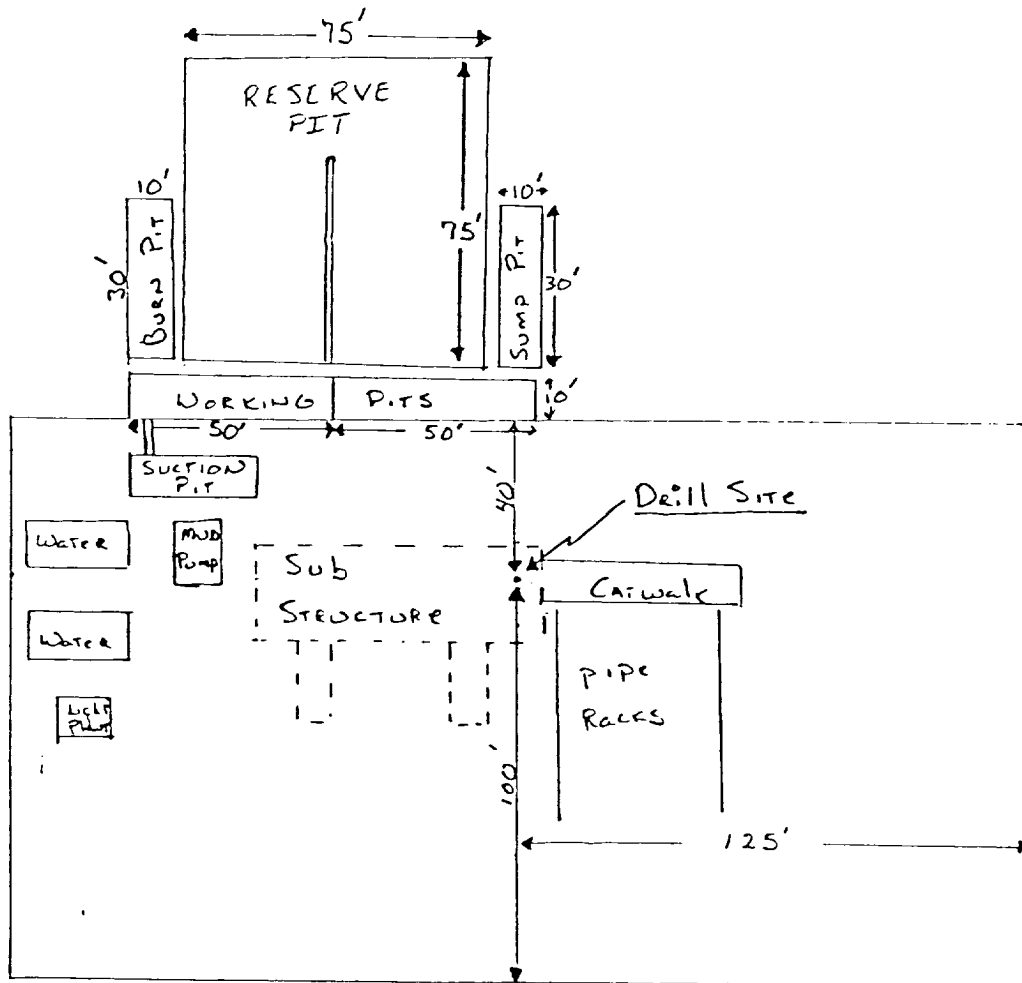
SURFACE USE PLAN EXHIBIT "B"  
McClellan Oil Corporation  
MOC No. 6  
Sec. 30-T5S-R25E  
Chaves County, New Mexico

McCLELLAN OIL CORPORATION  
SUGGESTED PAD DIMENSIONS

Reserve Pits 4 ft. deep, plastic lined

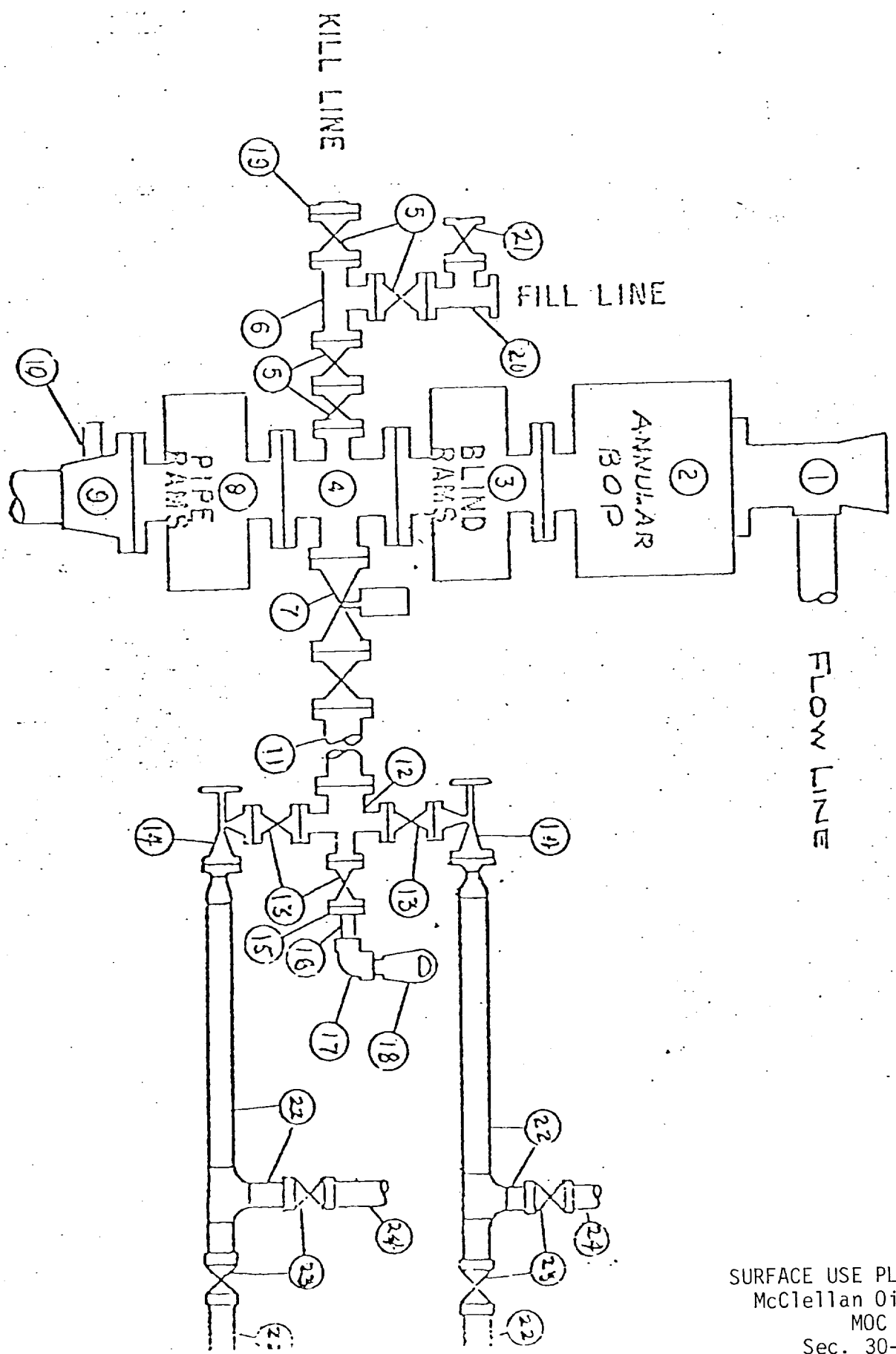
Working pits 5 ft. deep

No cellar



Scale 1" = 50'

# BLOWOUT PREVENTER SPECIFICATION



SURFACE USE PLAN EXHIBIT "E"  
 McClellan Oil Corporation  
 MOC No. 6  
 Sec. 30-T5S-R25E  
 Chaves County, New Mexico