

Drawn DD

Artesia, NM 88210

SUBMIT 1 DUPLICATE*
(Other instructions on reverse side)

Form approved.
Budget Bureau No. 42-R1425.

c/sf

UNITED STATES
DEPARTMENT OF THE INTERIOR
GEOLOGICAL SURVEY

APPLICATION FOR PERMIT TO DRILL, DEEPEN, OR PLUG BACK

1a. TYPE OF WORK

DRILL ☒

DEEPEN ☐

PLUG BACK ☐

b. TYPE OF WELL

OIL WELL ☐

GAS WELL ☒

MAY 20 1983

SINGLE ZONE ☒

MULTIPLE ZONE ☐

2. NAME OF OPERATOR

Mesa Petroleum Co. O. C. D.

3. ADDRESS OF OPERATOR

ARTESIA, OFFICE

P.O. Box 2009 / Amarillo, Texas 79189

4. LOCATION OF WELL (Report location clearly and in accordance with any State requirements.)

At surface

660' FSL & 990' FEL SE 1/4 SE 1/4

At proposed prod. zone

14. DISTANCE IN MILES AND DIRECTION FROM NEAREST TOWN OR POST OFFICE*

26 miles NW of Roswell, NM

15. DISTANCE FROM PROPOSED*

LOCATION TO NEAREST PROPERTY OR LEASE LINE, FT. (Also to nearest drlg. unit line, if any)

660'/660'

16. NO. OF ACRES IN LEASE

2441.2

17. NO. OF ACRES ASSIGNED TO THIS WELL

160 (communitized)

18. DISTANCE FROM PROPOSED LOCATION* TO NEAREST WELL, DRILLING, COMPLETED, OR APPLIED FOR, ON THIS LEASE, FT.

2650'

19. PROPOSED DEPTH

3200'

20. ROTARY OR CABLE TOOL

Rotary

21. ELEVATIONS (Show whether DF, RT, GR, etc.)

4058' GR

22. APPROX. DATE WORK WILL START*

June 10, 1983

23.

PROPOSED CASING AND CEMENTING PROGRAM

SIZE OF HOLE	SIZE OF CASING	WEIGHT PER FOOT	SETTING DEPTH	QUANTITY OF CEMENT
12"	8 5/8"	24#	1200'	700/300 surface
7 7/8"	4 1/2"	10.5#	3200'	350 cover all pay

Propose to drill 12" hole to approximately 1200' to set 8 5/8" surface casing and cement to surface. Will nipple up ram type BOP's and reduce hole to 7 7/8" to drill to total depth. Drilling medium will be freshwater/mud as required. After log evaluation, 4 1/2" casing may be run and cemented with sufficient kinds and amounts to isolate and seal off any fresh water, oil or gas zones encountered.

Operator's Gas Sales are dedicated.

Post FD-2
5-27-83
APR 27 1983

XC: BLM(O+6), CEN RCDS, ACCTG, MAT CONT, OPS(FILE), MIDLAND, ROSWELL, PARTNERS

IN ABOVE SPACE DESCRIBE PROPOSED PROGRAM: If proposal is to deepen or plug back, give data on present productive zone and proposed new productive zone. If proposal is to drill or deepen directionally, give pertinent data on subsurface locations and measured and true vertical depths. Give blowout preventer program, if any.

24.

SIGNED R. E. Machis

TITLE REGULATORY COORDINATOR

DATE MAY 11, 1983

(This space for Federal or State office use)

PERMIT NO. _____

APPROVAL DATE _____

APPROVED BY R. A. Lopez

TITLE Acting Asst. District Manager for Minerals

CONDITIONS OF APPROVAL, IF ANY:

*See Instructions On Reverse Side

OIL CONSERVATION DIVISION

STATE OF NEW MEXICO
ENERGY AND MINERALS DEPARTMENTP. O. BOX 2088
SANTA FE, NEW MEXICO 87501Form C-102
Revised 10-1-7

All distances must be from the outer boundaries of the Section.

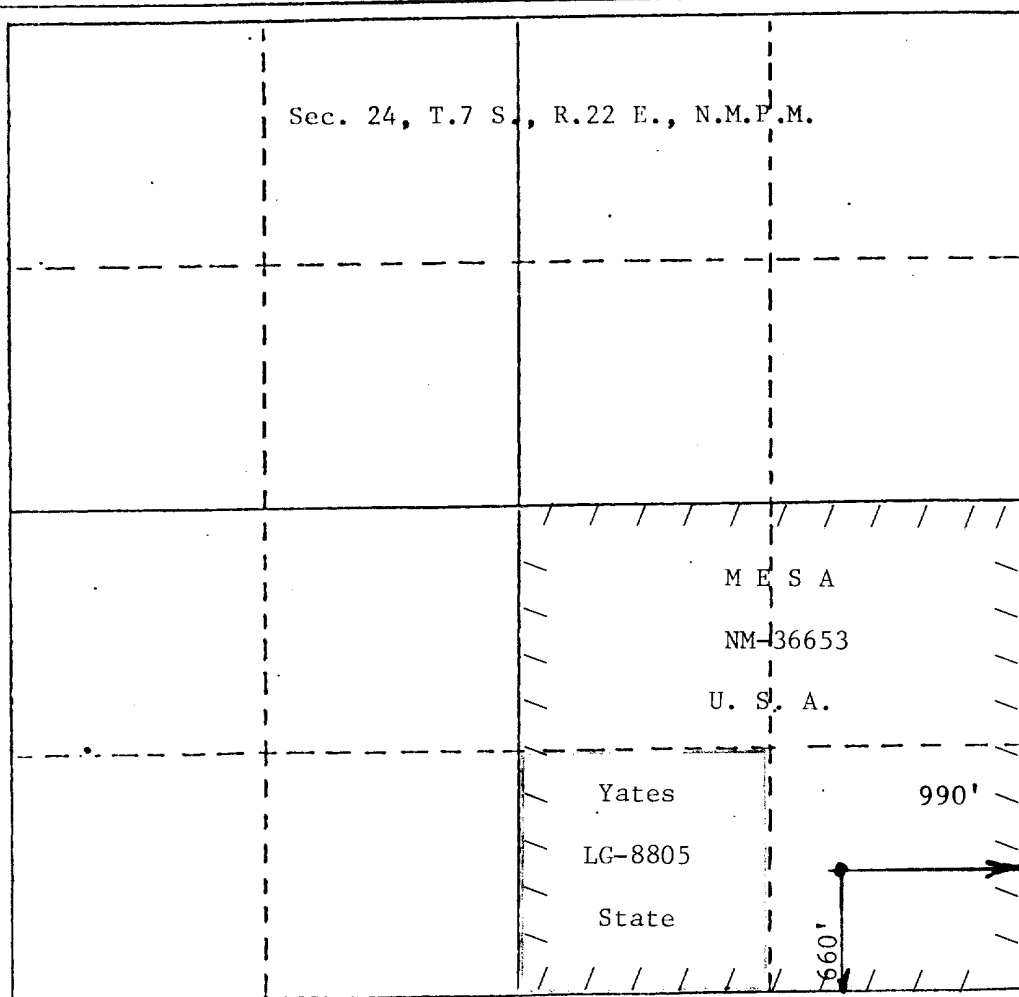
Operator Mesa Petroleum Co.			Lease Carol Federal Com		Well No. 14
Unit Letter P	Section 24	Township 7 South	Range 22 East	County Chaves	
Actual Footage Location of Well: 990 feet from the East line and 660 feet from the South line					
Ground Level Elev. 4058	Producing Formation ABO		Pool West Pecos Slope ABO		Dedicated Acreage: SE 1/4 160 Acres

1. Outline the acreage dedicated to the subject well by colored pencil or hatchure marks on the plat below.
2. If more than one lease is dedicated to the well, outline each and identify the ownership thereof (both as to working interest and royalty).
3. If more than one lease of different ownership is dedicated to the well, have the interests of all owners been consolidated by communitization, unitization, force-pooling, etc?

☐ Yes ☐ No If answer is "yes," type of consolidation communitization in progress

If answer is "no," list the owners and tract descriptions which have actually been consolidated. (Use reverse side of this form if necessary.)

No allowable will be assigned to the well until all interests have been consolidated (by communitization, unitization, force-pooling, or otherwise) or until a non-standard unit, eliminating such interests, has been approved by the Division.



CERTIFICATION

I hereby certify that the information contained herein is true and complete to the best of my knowledge and belief.

R. E. Mathis

Name

R. E. Mathis

Position

Regulatory Coordinator

Company

Mesa Petroleum Co.

Date

May 11, 1983

I hereby certify that the well location shown on this plat was plotted from field notes of actual surveys made by me or under my supervision, and that the same is true and correct to the best of my knowledge and belief.

Date Surveyed

April 1983

Registered Professional Engineer and/or Land Surveyor

JOHN D. JACQUES
Professional Engineer
No. 8298

MESA PETROLEUM CO.
Carol Fed Com No. 14
660' FSL & 990' FEL, Sec. 24, T7S, R22E
Chaves County, New Mexico

In conjunction with Form 9331-C, Application For Permit to Drill subject well, the following additional information is provided:

1. Applicable portions of the GENERAL REQUIREMENTS FOR OIL AND GAS OPERATIONS ON FEDERAL LEASES, Roswell District, Geological Survey of September 1, 1980 will be adhered to.

2. Geological markers are estimated as follows:

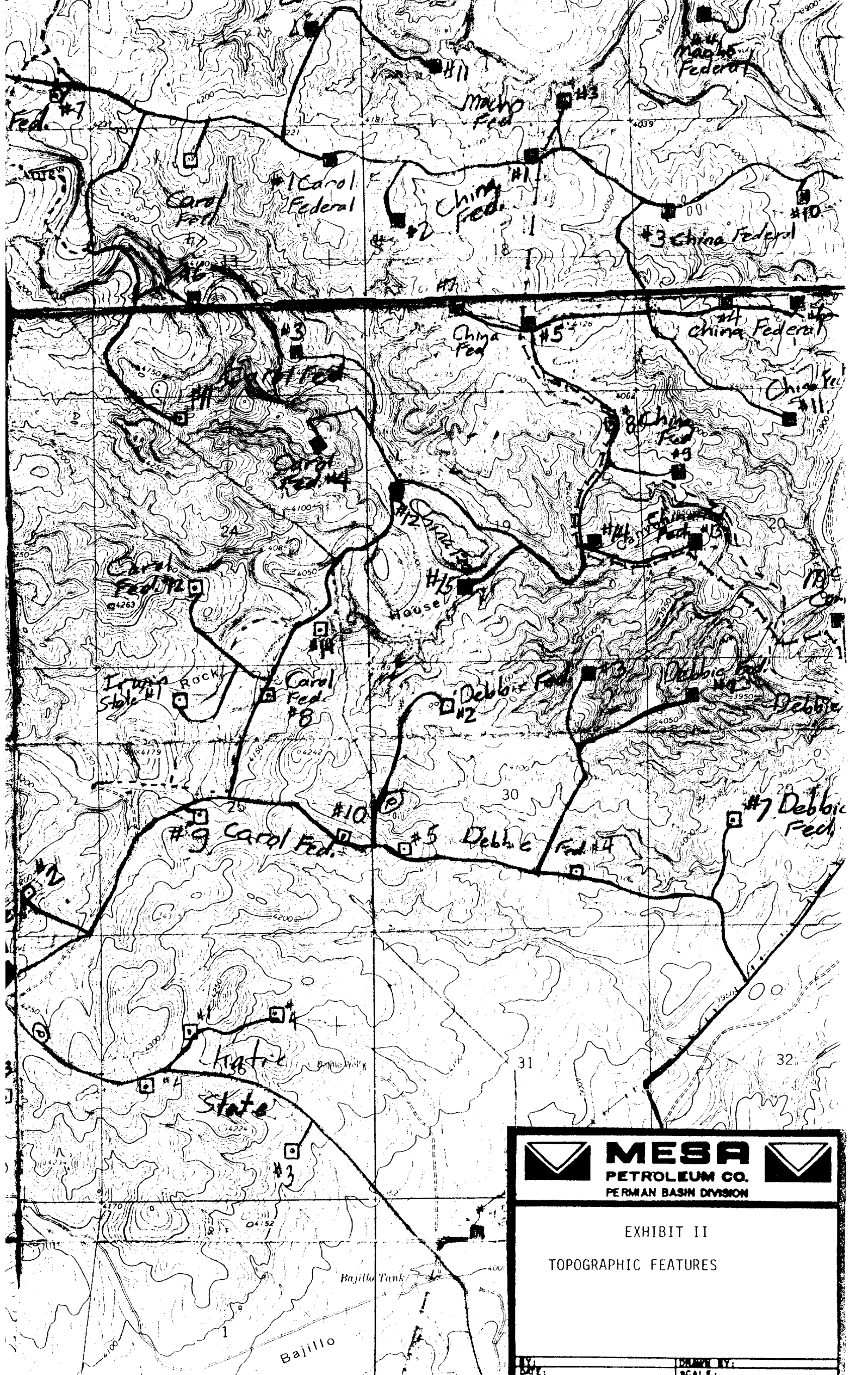
San Andres	Surface
Glorieta	481
Tubb	2031
ABO	2772



3. Hydrocarbon bearing strata may occur in the Abo formation(s). No fresh water is expected to be encountered below 1000'.

4. The Casing and Blowout Preventer Program will be determined by hole conditions as encountered. See Exhibit VI. Anticipate drilling with freshwater/mud using ram type preventer and rotating head for well control. The 8 5/8" casing will be set at approximately 1200' to protect any fresh water zones and cemented to the surface. The 4 1/2" production casing will be set at total depth or shallower depending upon the depth of the deepest commercial hydrocarbon bearing strata encountered. Sufficient amounts and kinds of cement would be used to ensure any water, gas, or oil zones encountered are isolated and shut off down to the casing point, if run.

5. No drill stem test or coring program is planned. The logging program may consist of a GR-CNL from surface total depth and FDC from casing point to total depth.

6. Anticipated drilling time is ten days with completion operations to follow as soon as a completion unit is available.



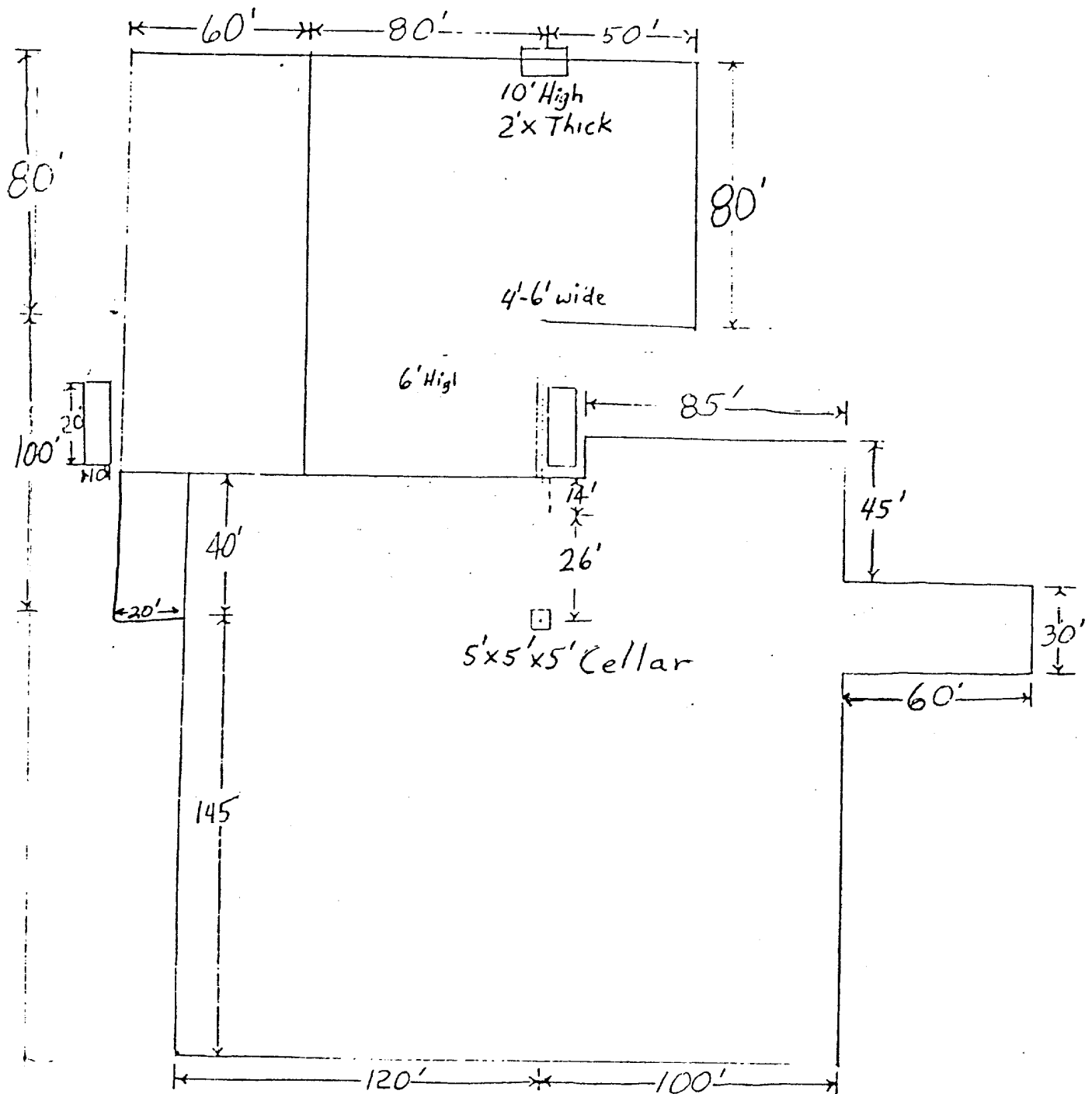
**MESA**

PETROLEUM CO.
PERMAN BASIN DIVISION

EXHIBIT II
TOPOGRAPHIC FEATURES

1:50,000
SCALE

DATE: 11/1/52
SCALE: 1:50,000



6"-8" Watered & Compacted Caliche
ON PAD & ROAD IF NEEDED


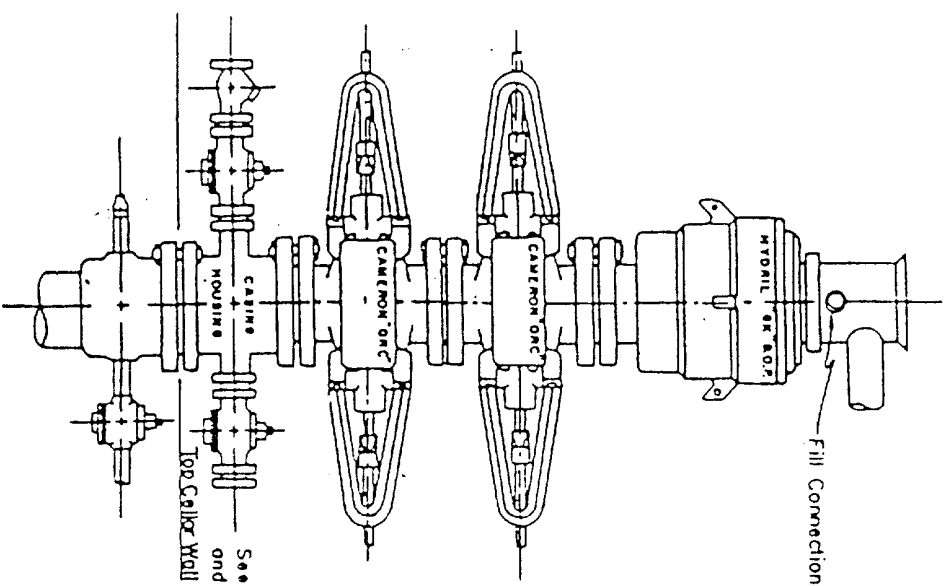
	MESA PETROLEUM CO.
ONSHORE DIVISION	

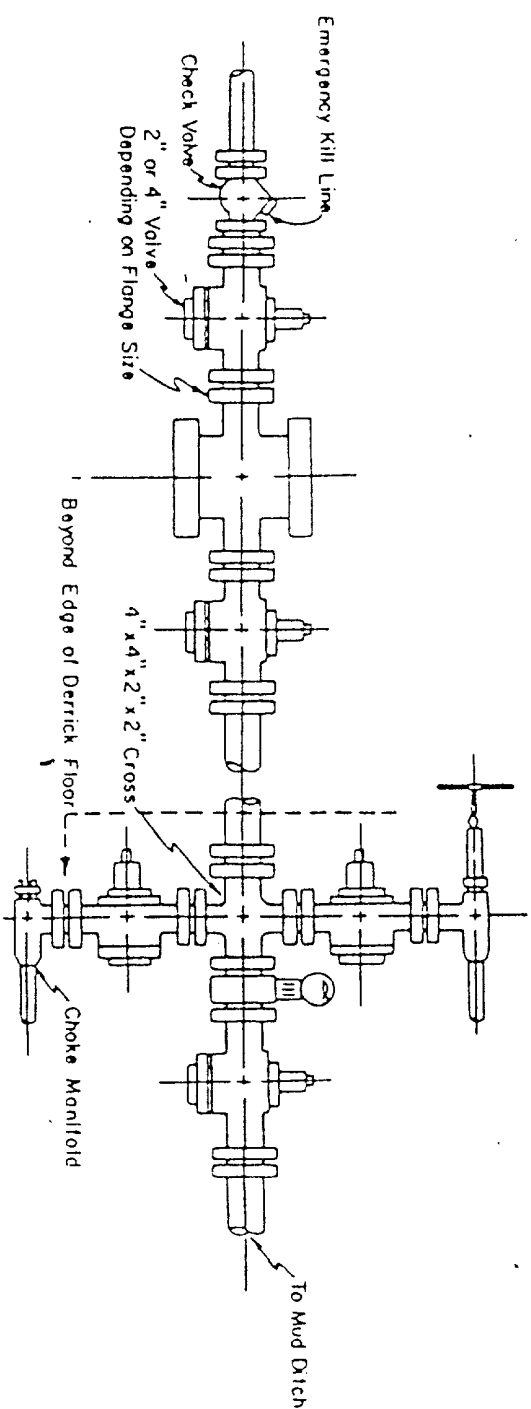
EXHIBIT V

FOR PROPOSED CAROL FED COM #14

Blow-out Preventers hydril and choke manifold are all 900 Series



3,000 PSI WORKING PRESSURE
BLOW-OUT PREVENTER HOOK-UP



3,000 PSI WORKING PRESSURE
KILL, CHOKE, AND FILL CONNECTIONS

DETAIL OF 4" FLOW LINE CHOKE ASSEMBLY

Minimum assembly for 3,000 PSI working pressure will consist of three preventers.
The bottom and middle preventers may be Cameron.

NOTE: HYDRIL not installed on shallow-low pressure wells.
RAM type BOPs are API 10" X 3000 PSI



MESA
PETROLEUM CO.
ONSHORE DIVISION

EXHIBIT

VI

BY:	DRAWN BY:
DATE:	SCALE: